

Grain Monitoring Program

Weekly Performance Update

May 7, 2019

For Grain Week 39 (2018-19 CY)

Summary

	Week 39	Week 38	Var. from Last Year
1. Stocks in Store ('000 tonnes)			
Country Elevators	↓ 3,450.2	3,706.6	-5%
% of Working Capacity	69%	74%	
Terminal Elevators	↓ 1,304.0	1,326.9	9%
% of Working Capacity	75%	76%	

	Week 39	Week 38	Var. from Last Year
2. Country Deliveries ('000 tonnes)			
Country Deliveries	↑ 890.4	754.9	2%

	Week 39	Week 38	Var. from Last Year
3. Railcar Supply to Western Ports (Cars)			
CN Allocation Plan	↑ 5,193	4,399	-5%
CN Unloads	↑ 4,616	3,800	-10%
CP Allocation Plan	n/a	n/a	n/a
CP Unloads	↑ 4,504	4,445	24%

	Week 39	Week 38	Var. from Last Year
4. Port Performance (Cars)			
Total Weekly Unloads	↑ 9,120	8,245	4%
4-Week Rolling Average	↑ 8,385	7,801	n/a
Var. to 4-Week Rolling Average	↑ 9%	6%	n/a
YTD Unloads	↑ 292,085	282,965	5%
Weekly Out-of-Car Time	↑ 6.7%	4.4%	137.9%

	Week 39	Week 38	Var. from Last Year
5. Terminal Shipments Year-to-Date ('000 tonnes)			
Vancouver	↑ 15,925.8	15,601.3	-4%
Prince Rupert	↑ 4,440.4	4,250.6	11%
Churchill	— 26.9	26.9	n/a
Thunder Bay	↑ 5,019.8	4,737.3	4%
Total Western Canada	25,412.9	24,616.1	0%

	Week 40	Week 39	Var. from Last Year	
6. Vessels as at May 5, 2019				
Vancouver	Vessel Lineup in port	↓ 18	22	0%
	Vessels Cleared	↑ 11	9	-15%
	Vessels Arrived	↓ 7	10	n/a
Pr. Rupert	Vessel Lineup in port	— 6	6	20%
	Vessels Cleared	↓ 2	3	-33%
	Vessels Arrived	↓ 2	5	n/a

	Week 40	Week 39	Var. from Last Year
Vessels Inbound May 06, 2019 to May 12, 2019 (Week 41)			
Vancouver	4		
Prince Rupert	3		

1. Stocks in Store: (Page 2)

- Country stocks decreased to 3.5 MMT in Week 39 utilizing 69% of the system's working. Space in primary elevators is good.
- Total western port terminal stocks remained at 1.3 MMT in Week 39, utilizing 75% of the working capacity.

2. Country Deliveries: (Page 2)

- Producer deliveries were 890,400 tonnes in Week 39.

3. Railcar Supply: (Page 3)

- Railcar allocation plans are supplied by CN to Week 40 of the 2018-19 grain year (see page 3 for details).

4. Port Performance: (Page 4)

- Total western port unloads were 9% higher than the 4-week moving average and 4% higher than Week 39 last year.
- West Coast unloads were 7,132 cars (Vancouver 5,604 and Prince Rupert 1,528), 6% higher than the 4-week moving average and 2% higher than Week 39 last year.
- Thunder Bay unloads were 1,988 cars, 21% higher than the 4-week moving average and 11% higher than Week 39 last year.
- Year-to-date total western port unloads are 5% higher than the same period last year. The corresponding tonnage is 6% higher than the same period last year.
- The total average terminal out-of-car time (OCT) increased to 6.7% from 4.4% in the previous week. The OCT time for Week 39 was 8.8% at Vancouver (5.6% on the North Shore and 11.3% on the South Shore), 3.5% at Thunder Bay, and 0.0% at Prince Rupert.

5. Shipments: (Page 5)

- Year-to-date Western Canadian shipments from port terminal elevators at Week 39 are even with the same period last year and 2% lower than the 3-year average.

6. Vessels: (Page 5)

- Week 40 lineup at Vancouver decreased to 18 vessels (The current one-year average at Vancouver is 21 vessels). Of the 18, 8 were at berth, 6 were anchored at English Bay, and 4 were anchored at Vancouver Island.
- Prince Rupert vessel lineup remained at 6 vessels (The current one-year average at Prince Rupert is 4 vessels).
- Vessels cleared from Vancouver were 11, and from Prince Rupert were 2 in Week 40 of the 2018-19 crop year.

7. Weather:

- Road bans are in effect, to varying degrees, throughout the prairies

1. Stocks in Store

1-A1 Country Stocks ('000 tonnes) – Week 39

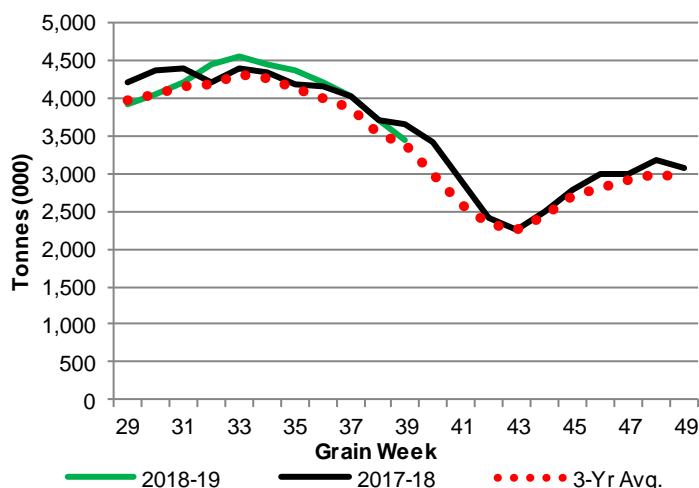
	MB	SK	AB	BC	Total
2018-19	731.0	1,674.0	1,019.8	25.4	3,450.2
2017-18	859.7	1,811.2	951.8	25.0	3,647.7
3-Yr Avg.	784.2	1,679.2	912.6	23.3	3,399.3
Var % - LY	-15%	-8%	7%	2%	-5%
Var % 3-Yr Avg.	-7%	0%	12%	9%	1%
Storage Capacity	1,611.2	4,001.2	2,061.3	41.1	7,714.8
Estimated Working Capacity	1,047.3	2,600.8	1,339.8	26.7	5,014.6
18-19 % of Wkg Cap	70%	64%	76%	95%	69%

1-B1 Terminal Stocks ('000 tonnes) – Week 39

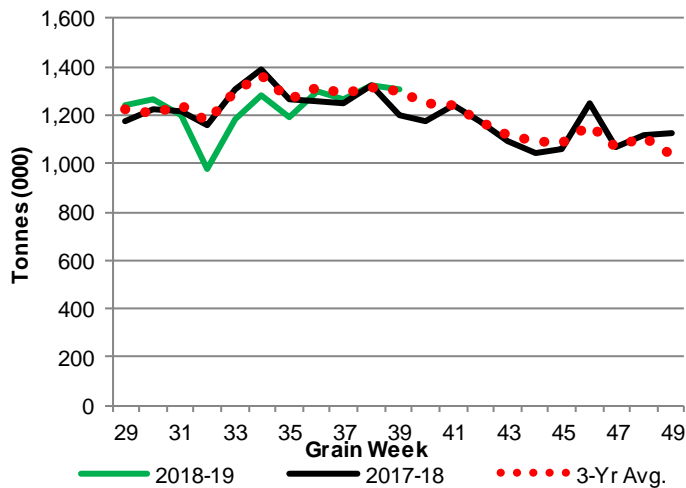
	VC	PR	West Coast	CH	TB	Total
2018-19	634.1	114.2	748.3	0.7	555.0	1,304.0
2017-18	n/a	n/a	690.8	29.5	477.4	1,197.7
3-Yr Avg.	n/a	n/a	720.4	19.9	560.7	1,301.0
Var % - LY	n/a	n/a	8%	-98%	16%	9%
Var % 3-Yr Avg.	n/a	n/a	4%	-96%	-1%	0%
Storage Capacity	978.0	209.5	1,187.5	140.0	1,157.5	2,485.0
Estimated Working Capacity	684.6	146.7	831.3	98.0	810.3	1,739.5
18-19 % of Wkg Cap	93%	78%	90%	1%	68%	75%

Note: CGC Weekly Statistics between 2013-14 and 2017-18 Crop Years reported Vancouver and Prince Rupert terminal stocks as a combined West Coast total. As of 2018-19 these are separated.

1-A2 Weekly Country Stocks in Store



1-B2 Weekly Terminal Stocks in Store

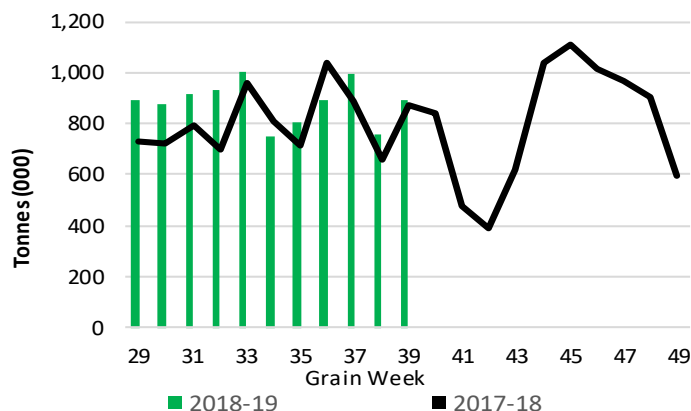


2. Country Deliveries

2-A Weekly Country Deliveries ('000 tonnes) – Week 39

	MB	SK	AB	BC	Total
2018-19	153.3	473.6	256.8	6.7	890.4
2017-18	151.8	401.6	316.5	5.4	875.3
4 Wk Avg	135.3	474.4	266.6	6.2	882.4
Var % to Last Year	1%	18%	-19%	24%	2%
Var % To 4 Wk Avg	13%	0%	-4%	8%	1%

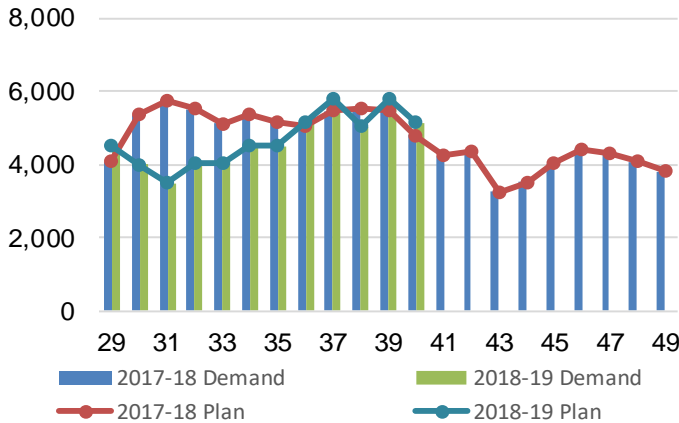
2-B 2018-19 Weekly Country Deliveries vs 2017-18



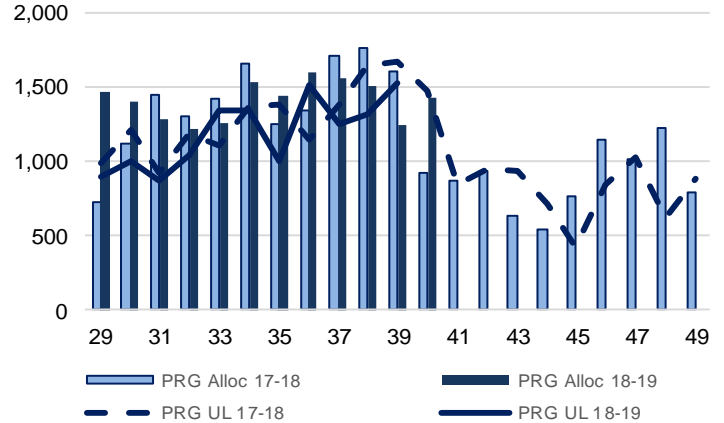
3. Railcar Supply

Special Note to readers: CP discontinued publishing weekly railcar spotting plans in Week 12 of the 2014-15 crop year (GCRS Service Report). CN continues to publish a weekly plan and the graphs below reflect CN's plan to Week 40 of 2018-19. Note that the orders accepted do not necessarily reflect shipper demand, but rather the railways' acceptance of shippers' car orders. When both railways provide the order fulfillment data requested with the expansion of the GMP mandate, which was announced on February 3, 2014, a complete set of metrics will be presented.

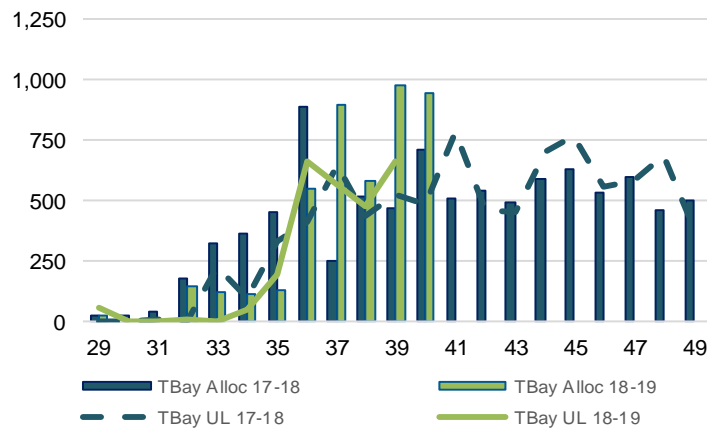
3-A: Canadian National Planned Car Allocation vs. Demand (cars) To Week 40 2018-19 Crop Year



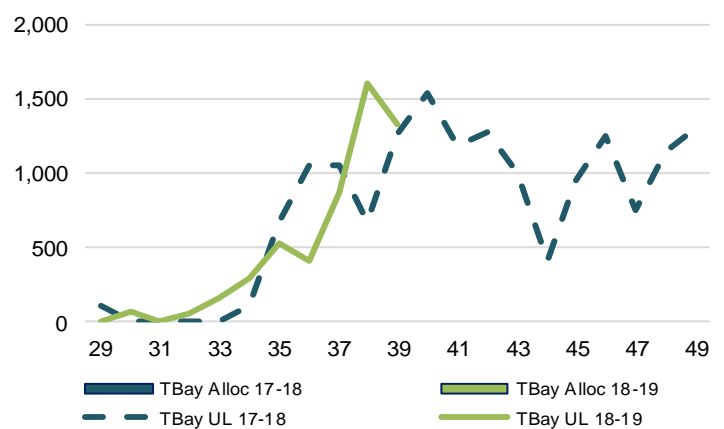
3-B3: Canadian National Planned Car Allocation to Western Ports Vs. Corridor Unloads at Port (cars) – Prince Rupert



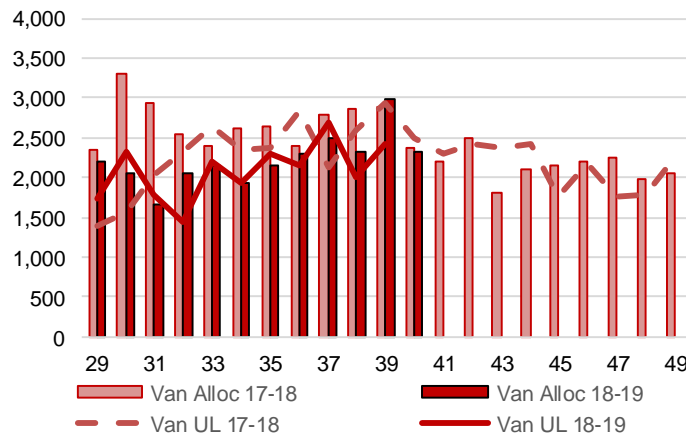
3-B1: Canadian National Planned Car Allocation to Western Ports Vs. Corridor Unloads at Port (cars) – Thunder Bay



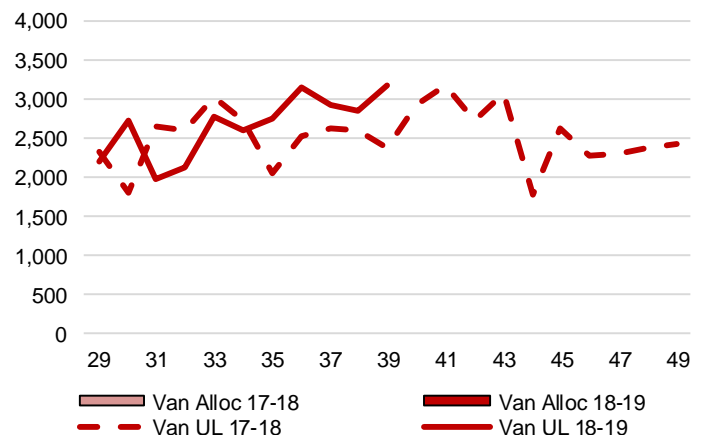
3-C1: Canadian Pacific Planned Car Allocation to Western Ports vs. Corridor Unloads at Port (cars) – Thunder Bay



3-B2: Canadian National Planned Car Allocation to Western Ports Vs. Corridor Unloads at Port (cars) – Vancouver



3-C2: Canadian Pacific Planned Car Allocation to Western Ports vs. Corridor Unloads at Port (cars) – Vancouver



4. Port Performance

4-A Weekly Unloads by Port (Cars) – This Year for Week 39, 4-Week Moving Average and Variances

	Vancouver	Prince Rupert	West Coast	Thunder Bay	Churchill	Total
2018-19	5,604	1,528	7,132	1,988	-	9,120
2017-18	5,323	1,666	6,989	1,785	-	8,774
4-Wk Avg.	5,340	1,402	6,742	1,644	-	8,385
Var % to Last Year	5%	-8%	2%	11%	n/a	4%
Var % to 4-Wk Avg.	5%	9%	6%	21%	n/a	9%

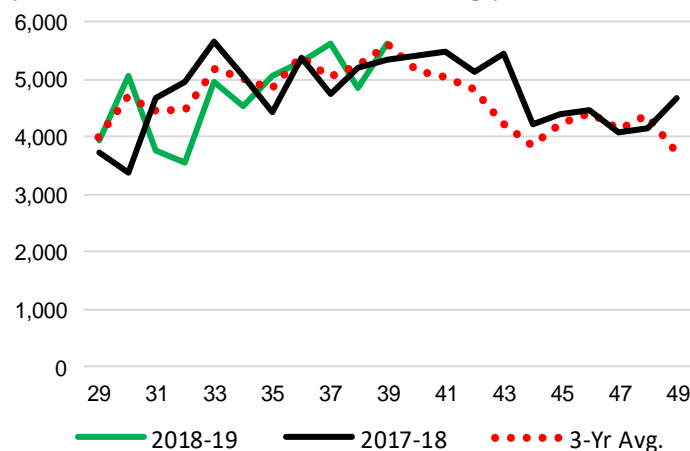
4-B Terminal Unloads by Port – This Year-to-Date as at Week 39 and Variances

YTD Unloads (cars)	Vancouver	Prince Rupert	West Coast	Thunder Bay	Churchill	Total
2018-19	189,638	47,637	237,275	54,810	-	292,085
2017-18	183,531	44,044	227,575	51,766	-	279,341
3-Yr Avg	186,500	47,604	234,104	56,383	-	290,487
Var % to Last Year	3%	8%	4%	6%	n/a	5%
Var % to 3-Yr Avg	2%	0%	1%	-3%	n/a	1%

YTD Unloads ('000 tonnes)	Vancouver	Prince Rupert	West Coast	Thunder Bay	Churchill	Total
2018-19	17,214.5	4,436.5	21,651.0	5,099.4	-	26,750.4
2017-18	16,546.7	3,982.7	20,529.4	4,755.2	-	25,284.6
3-Yr Avg.	16,815.1	4,323.5	21,138.7	5,195.6	-	26,334.3
Var % to Last Year	4%	11%	5%	7%	n/a	6%
Var % to 3-Yr Avg.	2%	3%	2%	-2%	n/a	2%

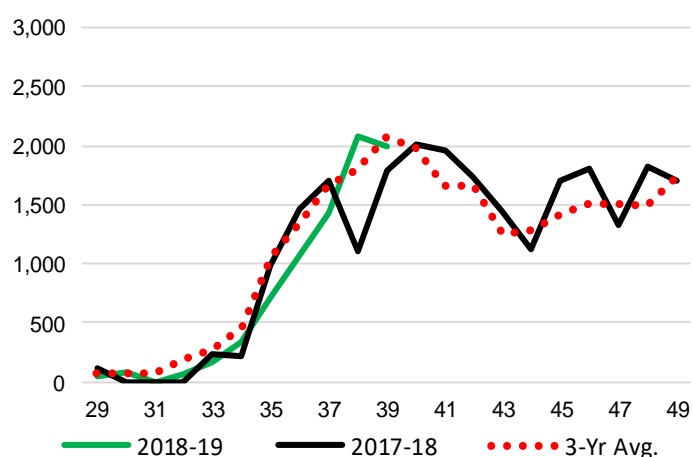
4-C Vancouver Unloads (cars)

(This Year vs. Last Year and the 3-Year Average)



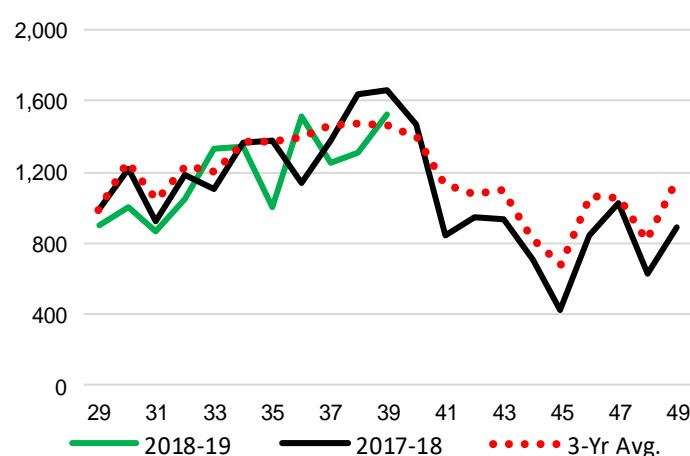
4-E Thunder Bay Unloads (cars)

(This Year vs. Last Year and the 3-Year Average)

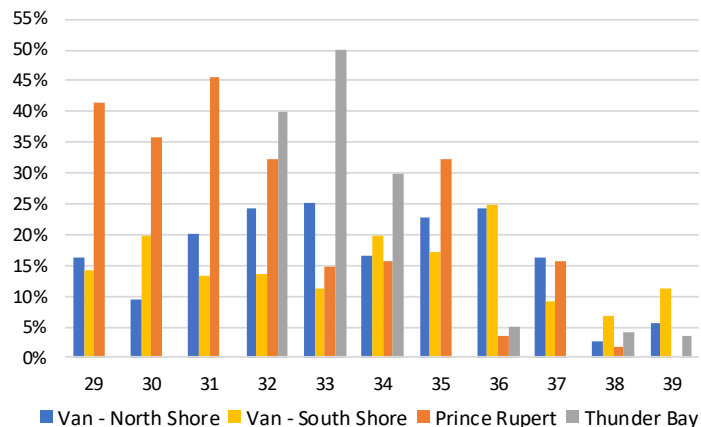


4-D Prince Rupert Unloads (cars)

(This Year vs. Last Year and the 3-Year Average)



4-F Weekly Out-of-Car Time (% of hours out-of-cars / total hours working) – by Port to Week 39



Out-of-car time is measured weekly and uses data from terminal elevators on the total number of hours the facilities are open & staffed (including overtime hours) and the corresponding number of hours that terminals have no railcars available to unload. The measure is expressed as a percentage (hours without cars to the total number of hours working).

4-G Monthly Unloads (cars) – This year vs. Last Year and the 3-Year Average to Week 39

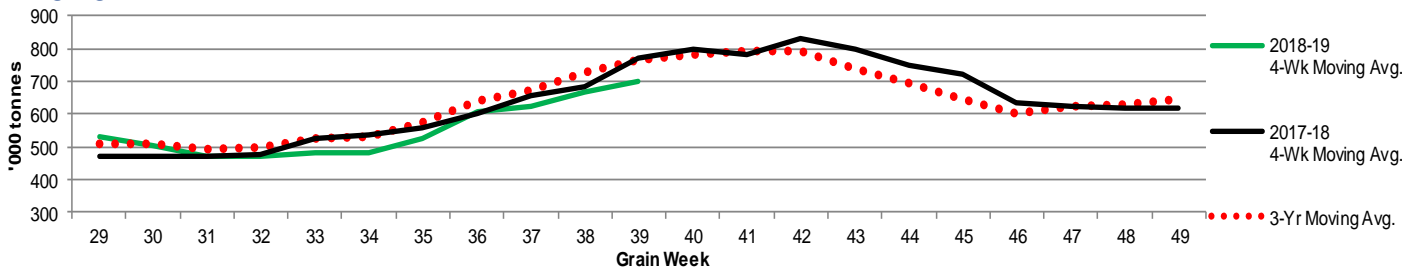
Months	Aug	Sep	Oct	Nov	Dec	Jan	Feb	Mar	Apr	May	Jun	Jul
Weeks	1-5	6-9	10-14	15-18	19-22	23-27	28-31	32-35	36-39	40-44	45-48	49-53
2018-19	31,421	32,599	44,576	36,393	33,023	35,925	20,462	24,145	33,541	-	-	-
2017-18	30,257	34,807	35,650	40,849	29,069	30,453	19,212	26,541	32,503	38,863	26,637	27,864
3-Yr Avg.	30,958	33,617	38,742	40,573	30,296	31,716	21,828	28,824	33,932	34,667	28,510	26,188
Var % to Last Year	4%	-6%	25%	-11%	14%	18%	7%	-9%	3%			
Var % to 3-Yr Avg.	1%	-3%	15%	-10%	9%	13%	-6%	-16%	-1%			

5. Shipments

5-A Shipments from Port Terminals ('000 tonnes) – This Year-to-Date as at Week 39 and Variance to Last Year-to-Date

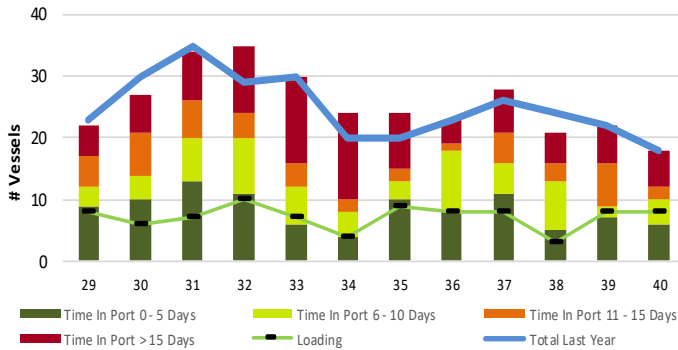
	Vancouver	Prince Rupert	West Coast	Thunder Bay	Churchill	Total
2018-19	15,925.8	4,440.4	20,366.2	5,019.8	26.9	25,412.9
2017-18	16,496.6	4,005.8	20,502.4	4,813.6	-	25,316.0
3-Yr Avg.	16,449.1	4,283.0	20,732.1	5,122.8	9.0	25,863.8
Var % to Last Year	-3%	11%	-1%	4%	n/a	0%
Var % to 3-Yr Avg.	-3%	4%	-2%	-2%	200%	-2%

5-B Weekly Shipments ('000 tonnes) from Port Terminals - This year 4-Week moving avg. vs. last year 4-Week moving avg. and the 3-Year moving avg.

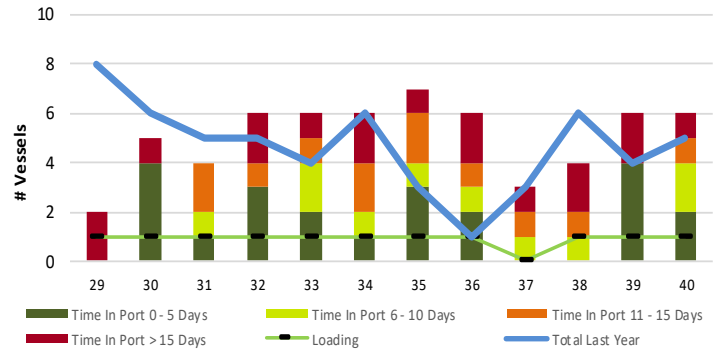


6. Vessels

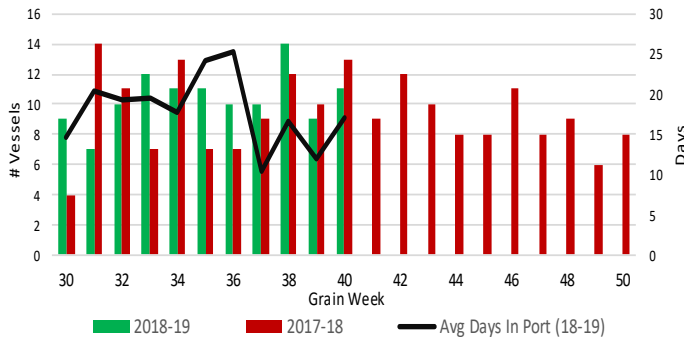
6-A Vessel Lineup at Vancouver as of Week 40 2018-19



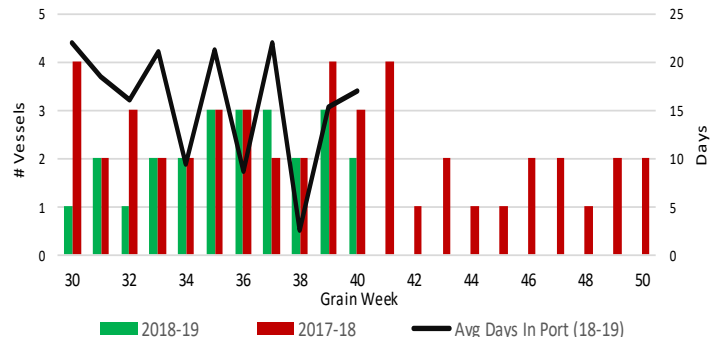
6-C Vessel Lineup at Prince Rupert as of Week 40 2018-19



6-B Vessels Cleared at Vancouver up to Week 40 2018-19



6-D Vessels Cleared at Prince Rupert up to Week 40 2018-19



Note: The 'Time in Port' measure for 6-A and 6-C is calculated as how long each vessel in the lineup has been in port as at Sunday of that grain week. The 'Avg Days in Port' measure for 6-B and 6-D is the average number of days that all vessels which cleared that week were in port. These measure use vessel data provided by the BC Chamber of Shipping.