

Grain Monitoring Program

Weekly Performance Update

June 11, 2019

For Grain Week 44 (2018-19 CY)

Summary

	Week 44	Week 43	Var. from Last Year
1. Stocks in Store ('000 tonnes)			
Country Elevators	↑ 2,814.4	2,338.4	13%
% of Working Capacity	56%	47%	
Terminal Elevators	↓ 984.0	1,172.9	-6%
% of Working Capacity	55%	66%	

2. Country Deliveries ('000 tonnes)			
Country Deliveries	↑ 1,336.9	754.6	29%

3. Railcar Supply to Western Ports (Cars)			
CN Allocation Plan	↑ 3,741	3,432	7%
CN Unloads	↓ 3,132	3,717	-18%
CP Allocation Plan	n/a	n/a	n/a
CP Unloads	↓ 3,489	3,750	59%

4. Port Performance (Cars)			
Total Weekly Unloads	↓ 6,621	7,467	10%
4-Week Rolling Average	↓ 7,855	8,792	n/a
Var. to 4-Week Rolling Average	↓ -16%	-15%	n/a
YTD Unloads	↑ 334,199	327,578	5%
Weekly Out-of-Car Time	↓ 15.0%	18.2%	-12.7%

5. Terminal Shipments Year-to-Date ('000 tonnes)			
Vancouver	↑ 18,455.0	18,041.3	-3%
Prince Rupert	↑ 5,063.8	5,009.1	14%
Churchill	— 26.9	26.9	n/a
Thunder Bay	↑ 6,060.7	5,846.7	5%
Total Western Canada	29,606.4	28,924.0	1%

6. Vessels as at Jun 9, 2019		Week 45	Week 44	Var. from Last Year
Vancouver	Vessel Lineup in port	↑ 23	21	35%
	Vessels Cleared	↑ 10	9	25%
	Vessels Arrived	↓ 12	16	n/a
Pr. Rupert	Vessel Lineup in port	↑ 6	4	100%
	Vessels Cleared	— 1	1	0%
	Vessels Arrived	↑ 3	1	n/a

Vessels Inbound Jun 10, 2019 to Jun 16, 2019 (Week 46)			
Vancouver	4		
Prince Rupert	1		

1. Stocks in Store: (Page 2)

- Country stocks increased to 2.8 MMT in Week 44 utilizing 56% of the system's working. Space in primary elevators is good.
- Total western port terminal stocks decreased to 1.0 MMT in Week 44, utilizing 55% of the working capacity.

2. Country Deliveries: (Page 2)

- Producer deliveries were 1,336,900 tonnes in Week 44.

3. Railcar Supply: (Page 3)

- Railcar allocation plans are supplied by CN to Week 45 of the 2018-19 grain year (see page 3 for details).

4. Port Performance: (Page 4)

- Total western port unloads were 16% lower than the 4-week moving average and 10% higher than Week 44 last year.
- West Coast unloads were 4,901 cars (Vancouver 3,901 and Prince Rupert 1,000), 19% lower than the 4-week moving average and even with Week 44 last year.
- Thunder Bay unloads were 1,720 cars, 7% lower than the 4-week moving average and 54% higher than Week 44 last year.
- Year-to-date total western port unloads are 5% higher than the same period last year. The corresponding tonnage is 6% higher than the same period last year.
- The total average terminal out-of-car time (OCT) decreased to 15.0% from 18.2% in the previous week. The OCT time for Week 44 was 16.7% at Vancouver (30.9% on the North Shore and 4.4% on the South Shore), 0.2% at Thunder Bay, and 36.2% at Prince Rupert.

5. Shipments: (Page 5)

- Year-to-date Western Canadian shipments from port terminal elevators at Week 44 are 1% higher than the same period last year and 1% lower than the 3-year average.

6. Vessels: (Page 5)

- Week 45 lineup at Vancouver increased to 23 vessels (The current one-year average at Vancouver is 21 vessels). Of the 23, 9 were at berth, 9 were anchored at English Bay, and 5 were anchored at Vancouver Island.
- Prince Rupert vessel lineup increased to 6 vessels (The current one-year average at Prince Rupert is 4 vessels).
- Vessels cleared from Vancouver were 10, and from Prince Rupert was 1 in Week 45 of the 2018-19 crop year.

1. Stocks in Store

1-A1 Country Stocks ('000 tonnes) – Week 44

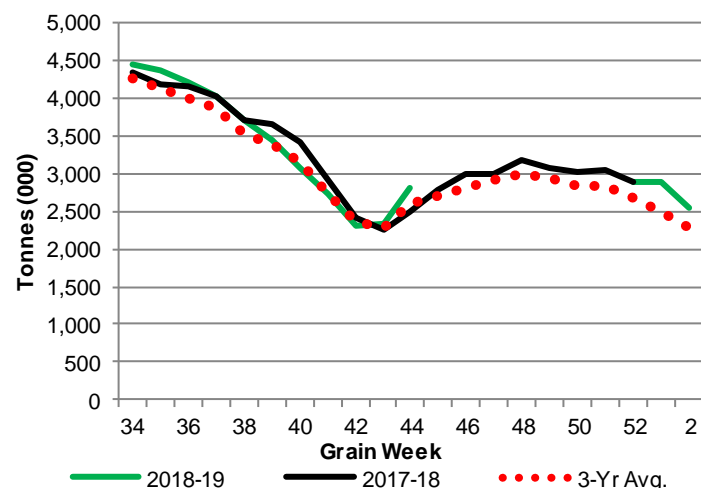
	MB	SK	AB	BC	Total
2018-19	637.8	1,383.0	772.8	20.8	2,814.4
2017-18	591.1	1,148.3	727.5	19.0	2,485.9
3-Yr Avg.	609.6	1,247.8	711.1	20.9	2,589.4
Var % - LY	8%	20%	6%	9%	13%
Var % 3-Yr Avg.	5%	11%	9%	0%	9%
Storage Capacity	1,611.2	4,010.8	2,061.3	41.1	7,724.4
Estimated Working Capacity	1,047.3	2,607.0	1,339.8	26.7	5,020.9
18-19 % of Wkg Cap	61%	53%	58%	78%	56%

1-B1 Terminal Stocks ('000 tonnes) – Week 44

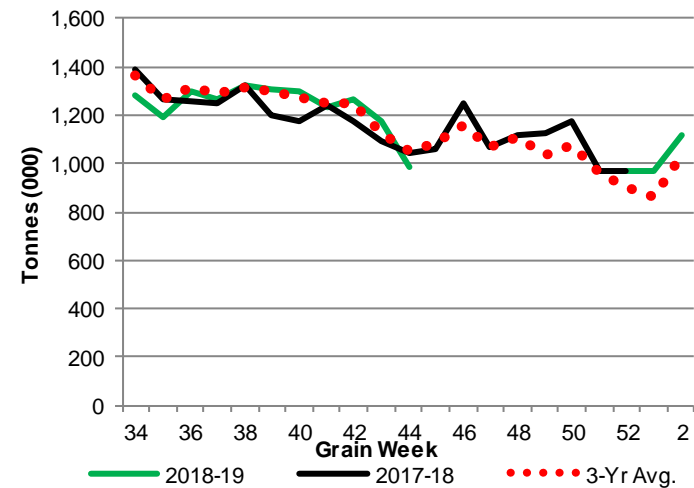
	VC	PR	West Coast	CH	TB	Total
2018-19	442.1	108.3	550.4	0.7	432.9	984.0
2017-18	n/a	n/a	641.9	29.5	374.8	1,046.2
3-Yr Avg.	n/a	n/a	606.5	19.9	424.5	1,050.9
Var % - LY	n/a	n/a	-14%	-98%	16%	-6%
Var % 3-Yr Avg.	n/a	n/a	-9%	-96%	2%	-6%
Storage Capacity	1035.5	209.5	1,245.0	140.0	1,157.5	2,542.5
Estimated Working Capacity	724.9	146.7	871.5	98.0	810.3	1779.8
18-19 % of Wkg Cap	61%	74%	63%	1%	53%	55%

Note: CGC Weekly Statistics between 2013-14 and 2017-18 Crop Years reported Vancouver and Prince Rupert terminal stocks as a combined West Coast total. As of 2018-19 these are separated.

1-A2 Weekly Country Stocks in Store



1-B2 Weekly Terminal Stocks in Store

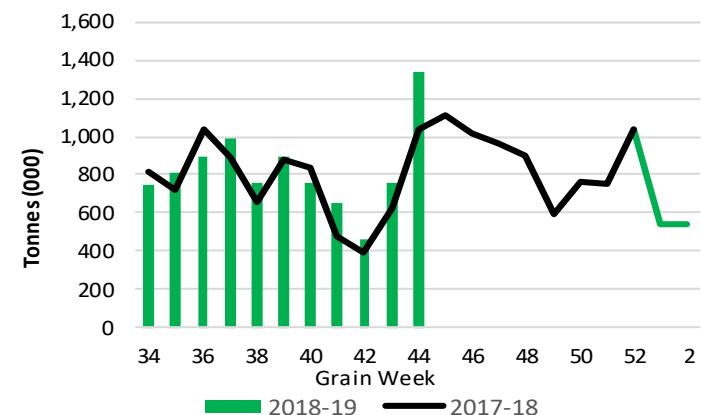


2. Country Deliveries

2-A Weekly Country Deliveries ('000 tonnes) – Week 44

	MB	SK	AB	BC	Total
2018-19	268.0	656.8	405.2	6.9	1,336.9
2017-18	182.8	470.1	383.2	4.1	1,040.2
4 Wk Avg	154.9	387.7	254.1	4.1	800.8
Var % to Last Year	47%	40%	6%	68%	29%
Var % To 4 Wk Avg	73%	69%	60%	67%	67%

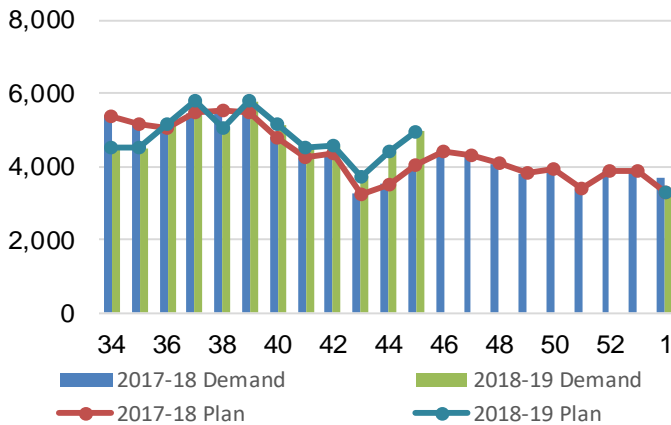
2-B 2018-19 Weekly Country Deliveries vs 2017-18



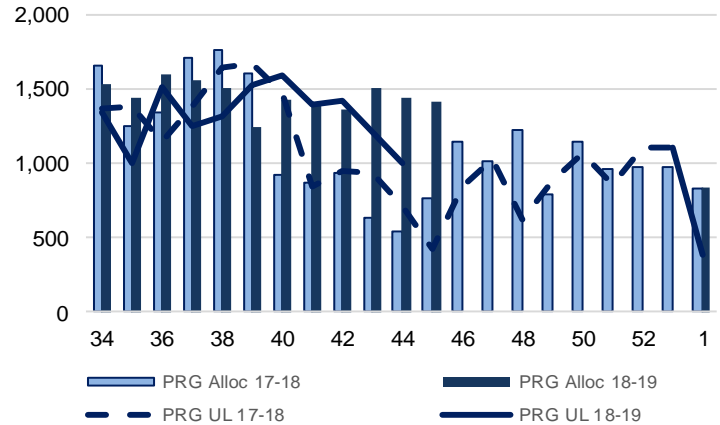
3. Railcar Supply

Special Note to readers: CP discontinued publishing weekly railcar spotting plans in Week 12 of the 2014-15 crop year (GCRS Service Report). CN continues to publish a weekly plan and the graphs below reflect CN's plan to Week 45 of 2018-19. Note that the orders accepted do not necessarily reflect shipper demand, but rather the railways' acceptance of shippers' car orders. When both railways provide the order fulfillment data requested with the expansion of the GMP mandate, which was announced on February 3, 2014, a complete set of metrics will be presented.

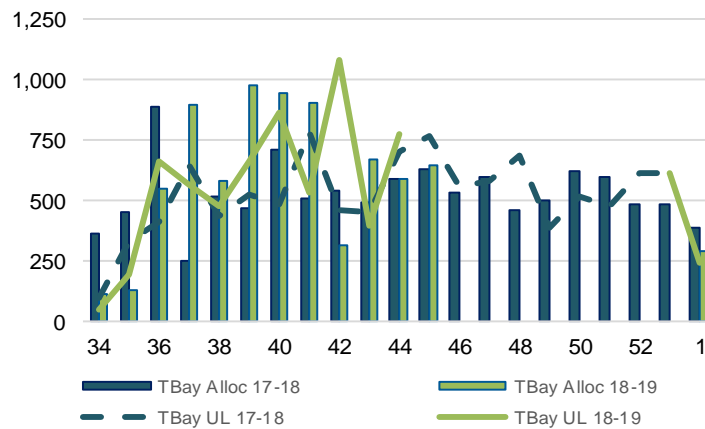
3-A: Canadian National Planned Car Allocation vs. Demand (cars) To Week 45 2018-19 Crop Year



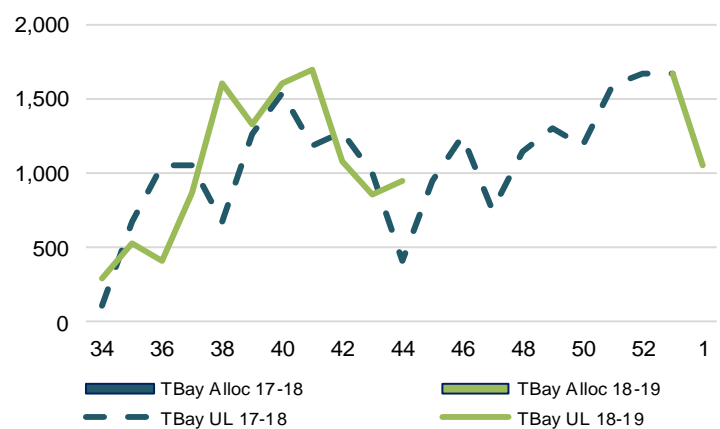
3-B3: Canadian National Planned Car Allocation to Western Ports Vs. Corridor Unloads at Port (cars) – Prince Rupert



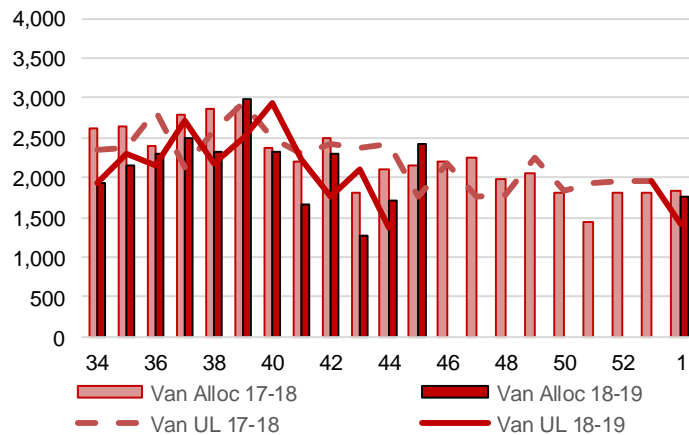
3-B1: Canadian National Planned Car Allocation to Western Ports Vs. Corridor Unloads at Port (cars) – Thunder Bay



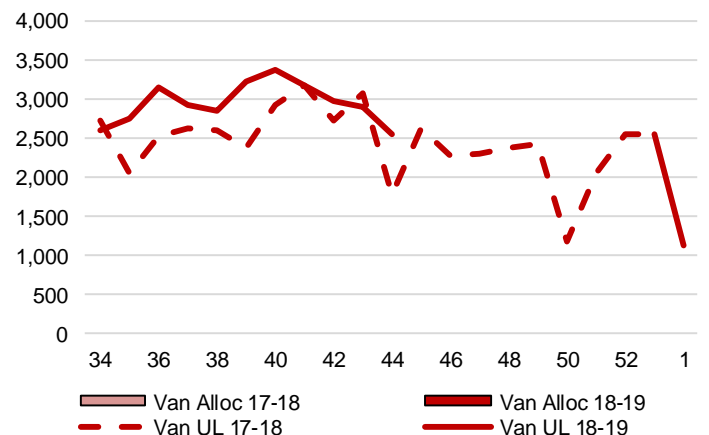
3-C1: Canadian Pacific Planned Car Allocation to Western Ports vs. Corridor Unloads at Port (cars) – Thunder Bay



3-B2: Canadian National Planned Car Allocation to Western Ports Vs. Corridor Unloads at Port (cars) – Vancouver



3-C2: Canadian Pacific Planned Car Allocation to Western Ports vs. Corridor Unloads at Port (cars) – Vancouver



4. Port Performance

4-A Weekly Unloads by Port (Cars) – This Year for Week 44, 4-Week Moving Average and Variances

	Vancouver	Prince Rupert	West Coast	Thunder Bay	Churchill	Total
2018-19	3,901	1,000	4,901	1,720	-	6,621
2017-18	4,209	711	4,920	1,117	-	6,037
4-Wk Avg.	4,761	1,254	6,014	1,841	-	7,855
Var % to Last Year	-7%	41%	0%	54%	n/a	10%
Var % to 4-Wk Avg.	-18%	-20%	-19%	-7%	n/a	-16%

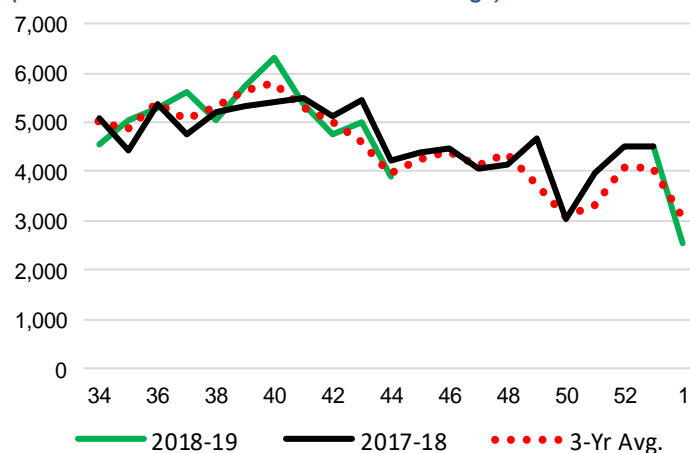
4-B Terminal Unloads by Port – This Year-to-Date as at Week 44 and Variances

YTD Unloads (cars)	Vancouver	Prince Rupert	West Coast	Thunder Bay	Churchill	Total
2018-19	215,321	54,242	269,563	64,636	-	334,199
2017-18	209,222	48,938	258,160	60,044	-	318,204
3-Yr Avg	211,298	53,584	264,882	65,188	-	330,070
Var % to Last Year	3%	11%	4%	8%	n/a	5%
Var % to 3-Yr Avg	2%	1%	2%	-1%	n/a	1%

YTD Unloads ('000 tonnes)	Vancouver	Prince Rupert	West Coast	Thunder Bay	Churchill	Total
2018-19	19,576.1	5,057.4	24,633.5	6,009.7	-	30,643.2
2017-18	18,858.3	4,435.4	23,293.7	5,529.8	-	28,823.5
3-Yr Avg.	19,060.6	4,875.4	23,936.0	6,013.3	-	29,949.2
Var % to Last Year	4%	14%	6%	9%	n/a	6%
Var % to 3-Yr Avg.	3%	4%	3%	0%	n/a	2%

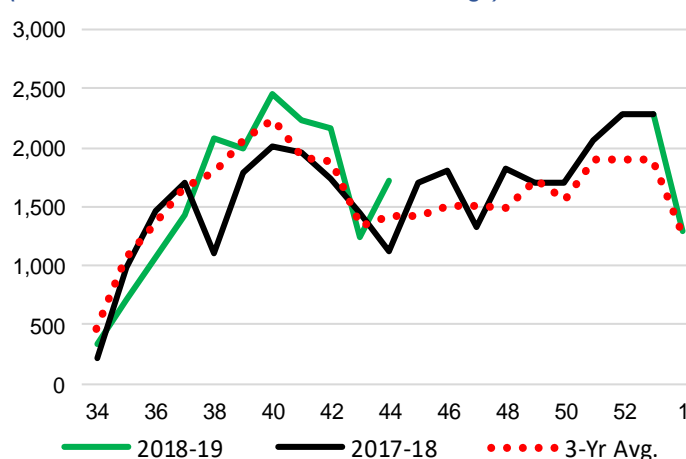
4-C Vancouver Unloads (cars)

(This Year vs. Last Year and the 3-Year Average)



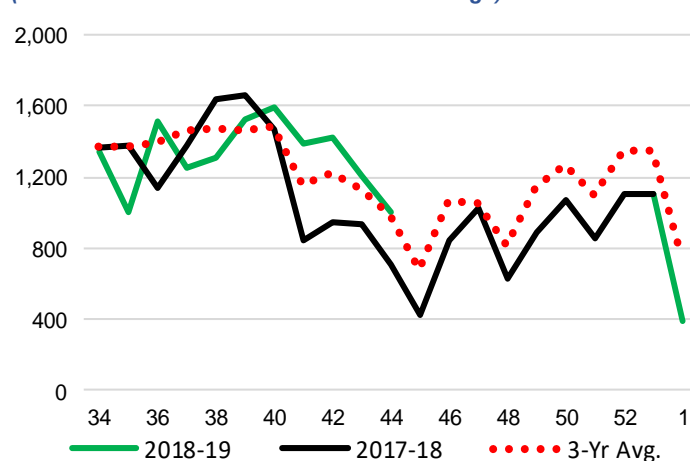
4-E Thunder Bay Unloads (cars)

(This Year vs. Last Year and the 3-Year Average)

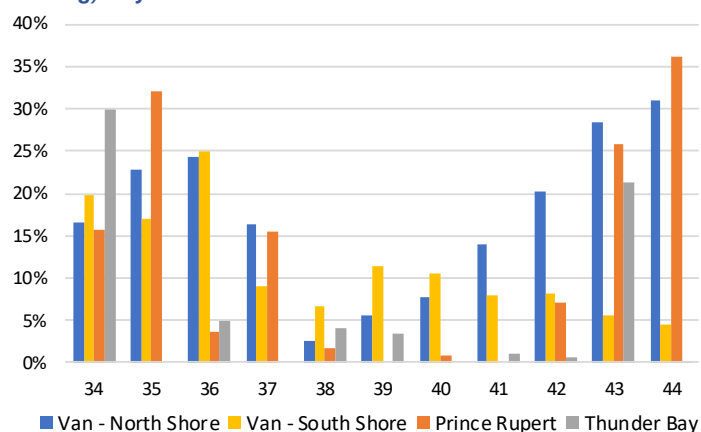


4-D Prince Rupert Unloads (cars)

(This Year vs. Last Year and the 3-Year Average)



4-F Weekly Out-of-Car Time (% of hours out-of-cars / total hours working) – by Port to Week 44



Out-of-car time is measured weekly and uses data from terminal elevators on the total number of hours the facilities are open & staffed (including overtime hours) and the corresponding number of hours that terminals have no railcars available to unload. The measure is expressed as a percentage (hours without cars to the total number of hours working).

4-G Monthly Unloads (cars) – This year vs. Last Year and the 3-Year Average to Week 44

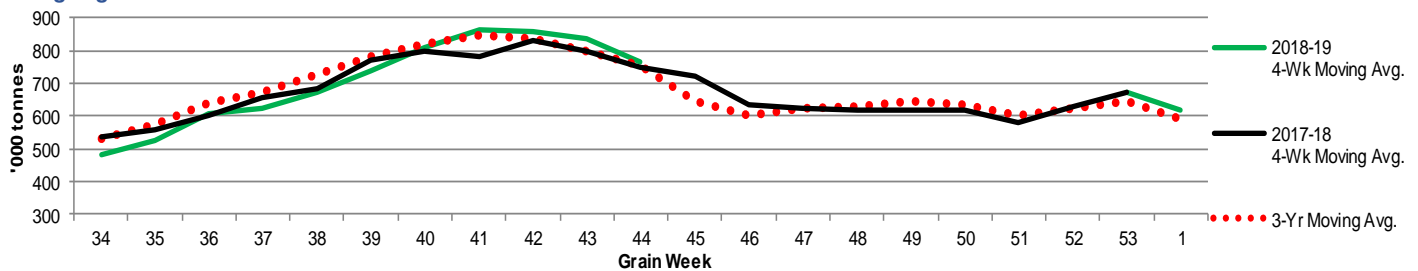
Months	Aug	Sep	Oct	Nov	Dec	Jan	Feb	Mar	Apr	May	Jun	Jul
Weeks	1-5	6-9	10-14	15-18	19-22	23-27	28-31	32-35	36-39	40-44	45-48	49-53
2018-19	31,421	32,599	44,576	36,393	33,023	35,925	20,464	24,145	33,866	41,787	-	-
2017-18	30,257	34,807	35,650	40,849	29,069	30,453	19,212	26,541	32,503	38,863	26,637	27,864
3-Yr Avg.	30,958	33,617	38,742	40,573	30,296	31,716	21,829	28,824	34,041	39,474	28,510	26,188
Var % to Last Year	4%	-6%	25%	-11%	14%	18%	7%	-9%	4%	8%		
Var % to 3-Yr Avg.	1%	-3%	15%	-10%	9%	13%	-6%	-16%	-1%	6%		

5. Shipments

5-A Shipments from Port Terminals ('000 tonnes) – This Year-to-Date as at Week 44 and Variance to Last Year-to-Date

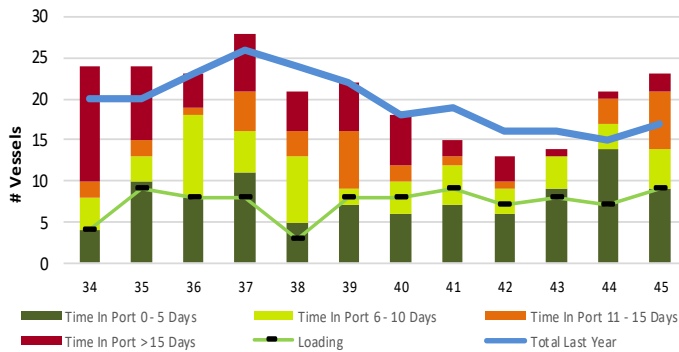
	Vancouver	Prince Rupert	West Coast	Thunder Bay	Churchill	Total
2018-19	18,455.0	5,063.8	23,518.8	6,060.7	26.9	29,606.4
2017-18	18,949.5	4,458.0	23,407.5	5,776.9	-	29,184.4
3-Yr Avg.	18,878.0	4,802.3	23,680.4	6,127.6	9.0	29,816.9
Var % to Last Year	-3%	14%	0%	5%	n/a	1%
Var % to 3-Yr Avg.	-2%	5%	-1%	-1%	200%	-1%

5-B Weekly Shipments ('000 tonnes) from Port Terminals - This year 4-Week moving avg. vs. last year 4-Week moving avg. and the 3-Year moving avg.

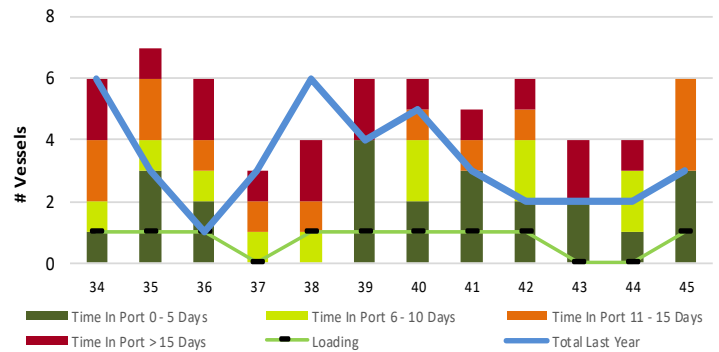


6. Vessels

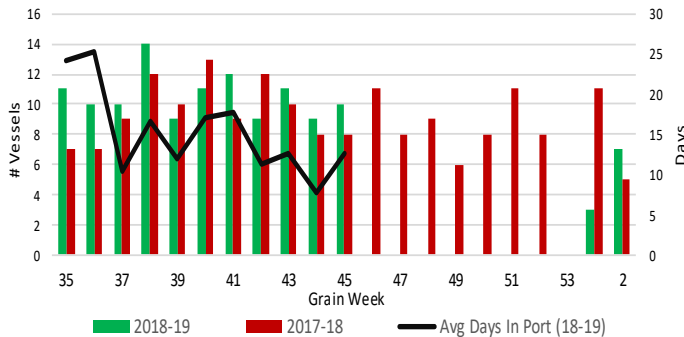
6-A Vessel Lineup at Vancouver as of Week 45 2018-19



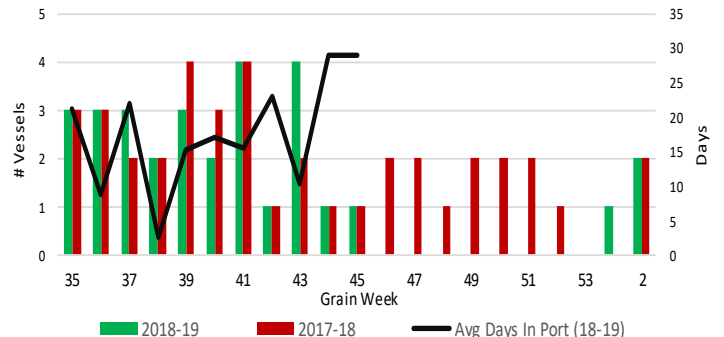
6-C Vessel Lineup at Prince Rupert as of Week 45 2018-19



6-B Vessels Cleared at Vancouver up to Week 45 2018-19



6-D Vessels Cleared at Prince Rupert up to Week 45 2018-19



Note: The 'Time in Port' measure for 6-A and 6-C is calculated as how long each vessel in the lineup has been in port as at Sunday of that grain week. The 'Avg Days in Port' measure for 6-B and 6-D is the average number of days that all vessels which cleared that week were in port. These measure use vessel data provided by the BC Chamber of Shipping.