

# Grain Monitoring Program

## Weekly Performance Update

August 27, 2019

For Grain Week 2 (2019-20 CY)

### Summary

	Week 2	Week 53	Var. from Last Year
<b>1. Stocks in Store ('000 tonnes)</b>			
Country Elevators	↓ 2,105.2	2,232.6	-19%
% of Working Capacity	42%	44%	
Terminal Elevators	↓ 999.5	1,013.0	-10%
% of Working Capacity	56%	57%	

### 2. Country Deliveries ('000 tonnes)

Country Deliveries	↓ 559.4	801.7	4%
--------------------	---------	-------	----

### 3. Railcar Supply to Western Ports (Cars)

CN Allocation Plan	↓ 2,230	2,724	-35%
CN Unloads	↓ 2,937	4,134	-23%
CP Allocation Plan	n/a	n/a	n/a
CP Unloads	↓ 3,349	5,690	1%

### 4. Port Performance (Cars)

Total Weekly Unloads	↓ 6,286	9,824	-12%
4-Week Rolling Average	↓ 6,466	6,543	n/a
Var. to 4-Week Rolling Average	↓ -3%	50%	n/a
YTD Unloads	↑ 16,110	4,229	42%
Weekly Out-of-Car Time	↓ 3.2%	7.6%	-68.4%

### 5. Terminal Shipments Year-to-Date ('000 tonnes)

Vancouver	↑ 1,074.6	579.3	129%
Prince Rupert	— 114.0	114.0	-40%
Churchill	— 0.0	0.0	n/a
Thunder Bay	↑ 354.1	252.1	90%
Total Western Canada	1,542.7	945.4	82%

6. Vessels as at Aug 25, 2019		Week 3	Week 2	Var. from Last Year
Vancouver	Vessel Lineup in port	↑ 17	16	-19%
	Vessels Cleared	↓ 9	12	80%
	Vessels Arrived	↑ 10	8	n/a
Pr. Rupert	Vessel Lineup in port	↑ 2	0	0%
	Vessels Cleared	↑ 1	0	-67%
	Vessels Arrived	↑ 3	0	n/a

### Vessels Inbound Aug 26, 2019 to Sep 01, 2019 (Week 4)

Vancouver	11
Prince Rupert	2

### 1. Stocks in Store: (Page 2)

- Country stocks decreased to 2.1 MMT in Week 2 utilizing 42% of the system's working. Space in primary elevators is good.
- Total western port terminal stocks remained at 1.0 MMT in Week 2, utilizing 56% of the working capacity.

### 2. Country Deliveries: (Page 2)

- Deliveries to primary elevators were 559,400 tonnes in Week 2.

### 3. Railcar Supply: (Page 3)

- Railcar allocation plans are supplied by CN to Week 3 of the 2019-20 grain year (see page 3 for details).

### 4. Port Performance: (Page 4)

- Prince Rupert was closed for annual maintenance in Week 2.
- Total western port unloads were 3% lower than the 4-week moving average and 12% lower than Week 2 last year.
- West Coast unloads were 4,706 cars (Vancouver 4,706 and Prince Rupert 0), even with the 4-week moving average and 12% lower than Week 2 last year.
- Thunder Bay unloads were 1,417 cars, 17% lower than the 4-week moving average and 20% lower than Week 2 last year.
- Churchill unloads were 163 cars.
- Year-to-date total western port unloads are 42% higher than the same period last year. The corresponding tonnage is 42% higher than the same period last year.
- The total average terminal out-of-car time (OCT) decreased to 3.2% from 7.6% in the previous week. The OCT time for Week 2 was 3.8% at Vancouver (0.0% on the North Shore and 12.5% on the South Shore), 0.0% at Prince Rupert, and 0.0% at Thunder Bay.

### 5. Shipments: (Page 5)

- Year-to-date Western Canadian shipments from port terminal elevators at Week 2 are 82% higher than the same period last year and 37% higher than the 3-year average.

### 6. Vessels: (Page 5)

- Week 3 lineup at Vancouver increased to 17 vessels (The current one-year average at Vancouver is 21 vessels). Of the 17, 7 were at berth, 6 were anchored at English Bay, 2 were anchored at Burrard Inlet, and 2 were anchored at Vancouver Island.
- Prince Rupert vessel lineup increased to 2 vessels (The current one-year average at Prince Rupert is 4 vessels).
- Vessels cleared from Vancouver were 9, and from Prince Rupert was 1 in Week 3 of the 2019-20 crop year.

# 1. Stocks in Store

## 1-A1 Country Stocks ('000 tonnes) – Week 2

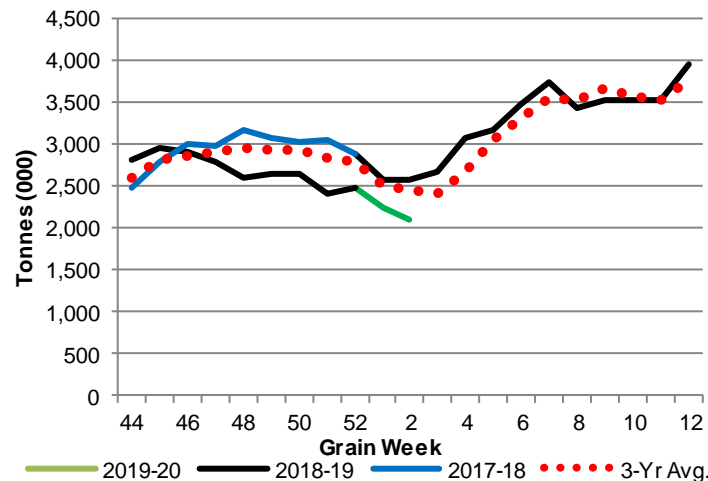
	MB	SK	AB	BC	Total
2019-20	420.0	1,198.7	473.3	13.2	2,105.2
2018-19	555.0	1,431.4	588.4	6.8	2,581.6
3-Yr Avg.	486.7	1,288.2	657.7	14.3	2,447.0
Var % - LY	-24%	-16%	-20%	94%	-18%
Var % 3-Yr Avg.	-14%	-7%	-28%	-8%	-14%
Storage Capacity	1,611.2	4,011.1	2,087.3	41.1	7,750.7
Estimated Working Capacity	1,047.3	2,607.2	1,356.7	26.7	5,037.9
19-20 % of Wkg Cap	40%	46%	35%	49%	42%

## 1-B1 Terminal Stocks ('000 tonnes) – Week 2

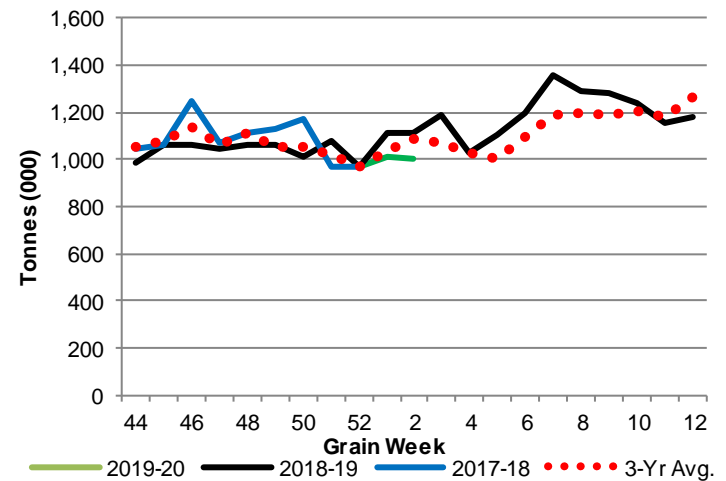
	VC	PR	West Coast	CH	TB	Total
2019-20	537.6	14.8	552.4	29.6	417.5	999.5
2018-19	561.7	52.6	614.3	29.5	470.5	1,114.3
3-Yr Avg.	366.4	22.5	616.2	29.5	443.5	1,089.3
Var % - LY	n/a	n/a	-10%	0%	-11%	-10%
Var % 3-Yr Avg.	n/a	n/a	-10%	0%	-6%	-8%
Storage Capacity	1035.5	209.5	1,245.0	140.0	1,157.5	2,542.5
Estimated Working Capacity	724.9	146.7	871.6	98.0	810.2	1,779.8
19-20 % of Wkg Cap	74%	10%	63%	30%	52%	56%

**Note:** CGC Weekly Statistics between 2013-14 and 2017-18 Crop Years reported Vancouver and Prince Rupert terminal stocks as a combined West Coast total. As of 2018-19 these are separated.

## 1-A2 Weekly Country Stocks in Store



## 1-B2 Weekly Terminal Stocks in Store

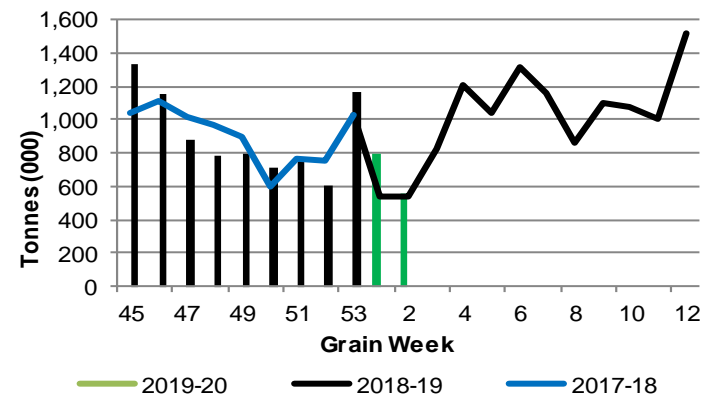


# 2. Country Deliveries

## 2-A Country Deliveries ('000 tonnes) – Week 2

	MB	SK	AB	BC	Total
2019-20	153.9	283.5	118.6	3.4	559.4
2018-19	150.9	274.1	111.2	1.5	537.5
4 Wk Avg	177.0	418.3	182.5	5.4	783.2
Var % to Last Year	2%	3%	7%	135%	4%
Var % To 4 Wk Avg	-13%	-32%	-35%	-37%	-29%

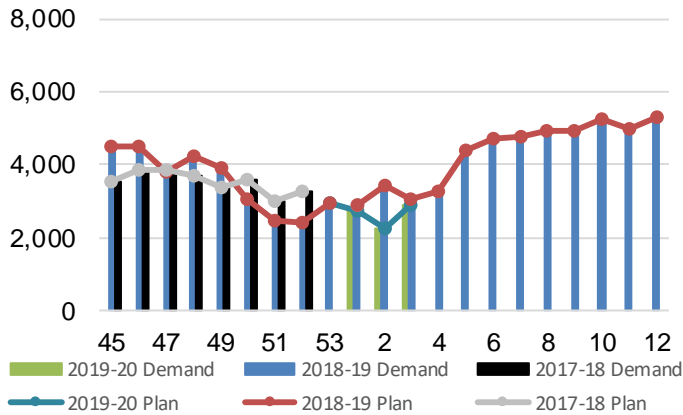
## 2-B 2019-20 Weekly Country Deliveries



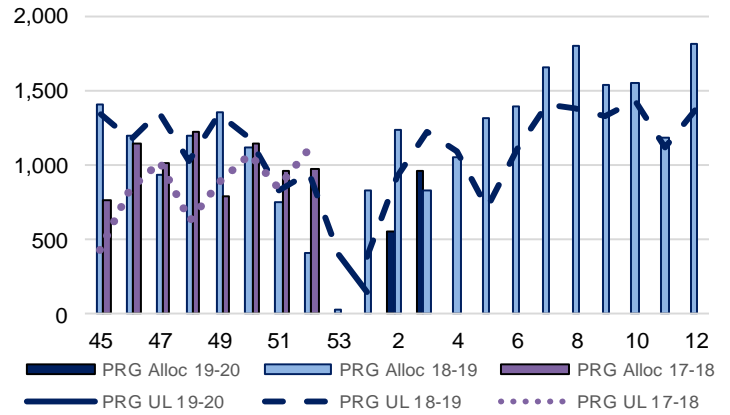
### 3. Railcar Supply

**Special Note to readers:** CP discontinued publishing weekly railcar spotting plans in Week 12 of the 2014-15 crop year (GCRS Service Report). CN continues to publish a weekly plan and the graphs below reflect CN's plan to Week 3 of 2019-20. Note that the orders accepted do not necessarily reflect shipper demand, but rather the railways' acceptance of shippers' car orders. When both railways provide the order fulfillment data requested with the expansion of the GMP mandate, which was announced on February 3, 2014, a complete set of metrics will be presented.

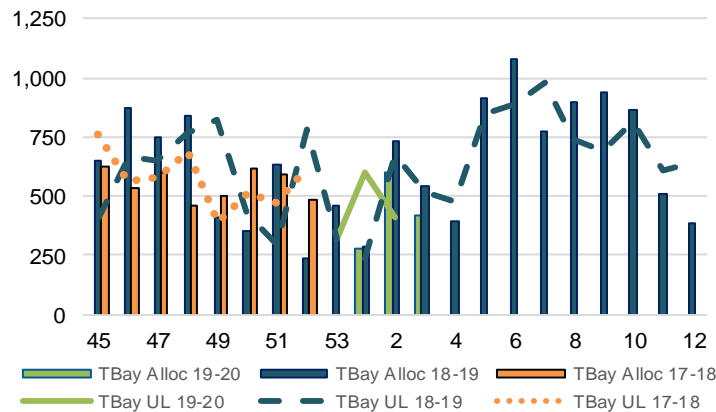
**3-A: Canadian National Planned Car Allocation vs. Demand (cars) To Week 3 2019-20 Crop Year**



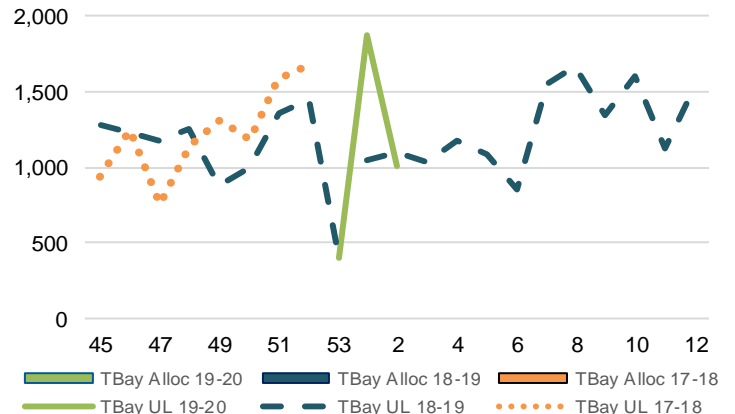
**3-B3: Canadian National Planned Car Allocation to Western Ports Vs. Corridor Unloads at Port (cars) – Prince Rupert**



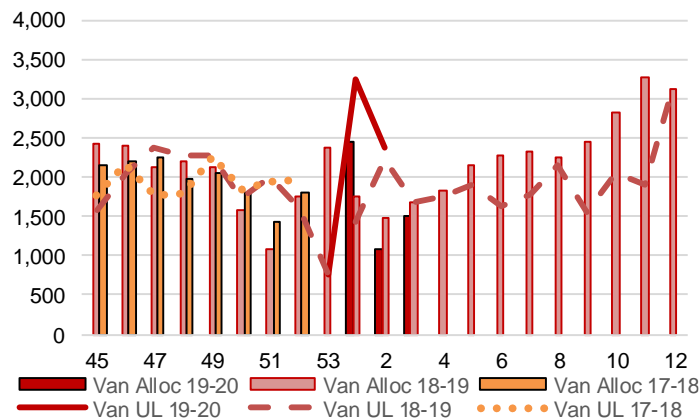
**3-B1: Canadian National Planned Car Allocation to Western Ports Vs. Corridor Unloads at Port (cars) – Thunder Bay**



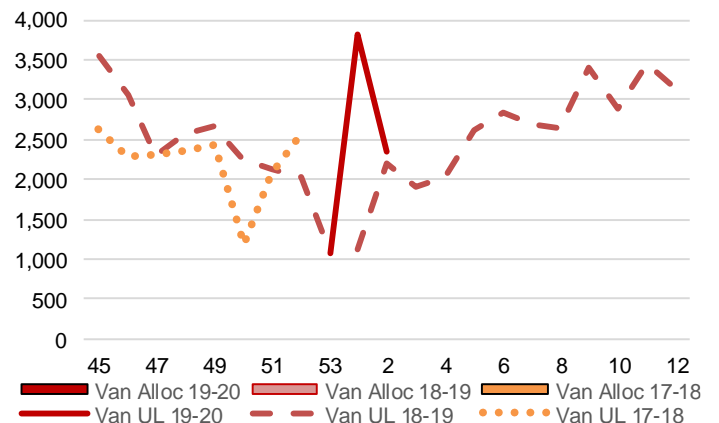
**3-C1: Canadian Pacific Planned Car Allocation to Western Ports vs. Corridor Unloads at Port (cars) – Thunder Bay**



**3-B2: Canadian National Planned Car Allocation to Western Ports Vs. Corridor Unloads at Port (cars) – Vancouver**



**3-C2: Canadian Pacific Planned Car Allocation to Western Ports vs. Corridor Unloads at Port (cars) – Vancouver**



## 4. Port Performance

### 4-A Weekly Unloads by Port (Cars) – This Year for Week 2, 4-Week Moving Average and Variances

	Vancouver	Prince Rupert	West Coast	Thunder Bay	Churchill	Total
2019-20	4,706	-	4,706	1,417	163	6,286
2018-19	4,430	925	5,355	1,771	-	7,126
4-Wk Avg.	4,309	377	4,686	1,708	73	6,466
Var % to Last Year	6%	-100%	-12%	-20%	n/a	-12%
Var % to 4-Wk Avg.	9%	-100%	0%	-17%	124%	-3%

### 4-B Terminal Unloads by Port – This Year-to-Date as at Week 2 and Variances

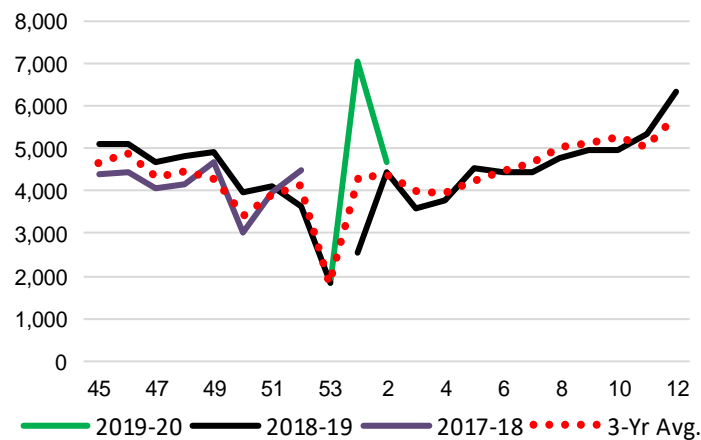
YTD Unloads (cars)	Vancouver	Prince Rupert	West Coast	Thunder Bay	Churchill	Total
2019-20	11,767	154	11,921	3,898	291	16,110
2018-19	6,982	1,315	8,297	3,058	-	11,355
3-Yr Avg	8,679	987	9,666	3,162	97	12,925
Var % to Last Year	69%	-88%	44%	27%	n/a	42%
Var % to 3-Yr Avg	36%	-84%	23%	23%	200%	25%

YTD Unloads ('000 tonnes)	Vancouver	Prince Rupert	West Coast	Thunder Bay	Churchill	Total
2019-20	1,074.4	14.5	1,088.9	368.8	26.6	1,484.3
2018-19	631.7	125.0	756.7	286.8	-	1,043.5
3-Yr Avg.	784.6	90.7	875.3	297.7	8.9	1,181.8
Var % to Last Year	70%	-88%	44%	29%	n/a	42%
Var % to 3-Yr Avg.	37%	-84%	24%	24%	200%	26%

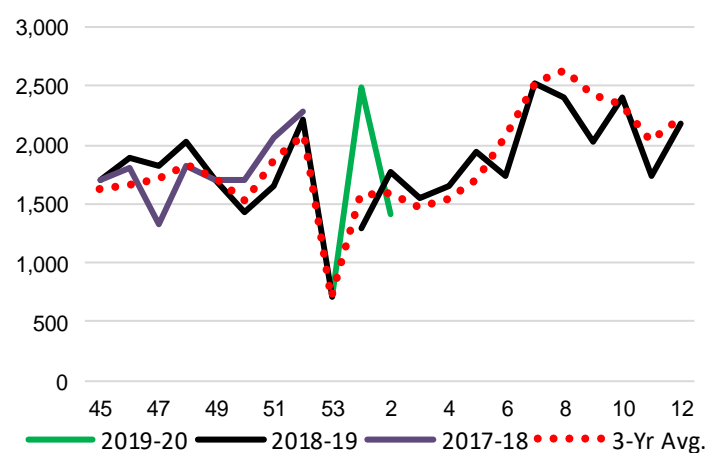
### 4-C Vancouver Unloads (cars)

(This Year vs. Last Year and the 3-Year Average)



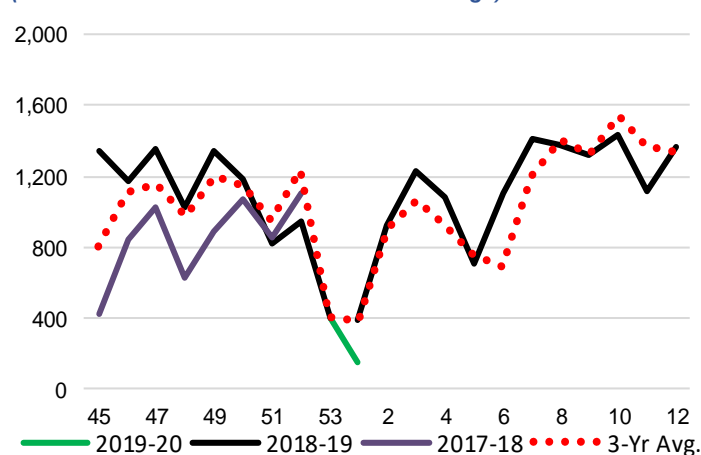
### 4-E Thunder Bay Unloads (cars)

(This Year vs. Last Year and the 3-Year Average)

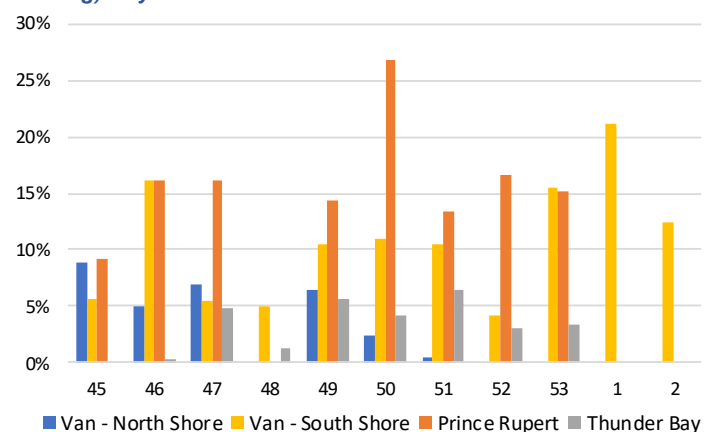


### 4-D Prince Rupert Unloads (cars)

(This Year vs. Last Year and the 3-Year Average)



### 4-F Weekly Out-of-Car Time (% of hours out-of-cars / total hours working) – by Port to Week 2



Out-of-car time is measured weekly and uses data from terminal elevators on the total number of hours the facilities are open & staffed (including overtime hours) and the corresponding number of hours that terminals have no railcars available to unload. The measure is expressed as a percentage (hours without cars to the total number of hours working).

**4-G Monthly Unloads (cars) – This year vs. Last Year and the 3-Year Average to Week 53 2018-19**

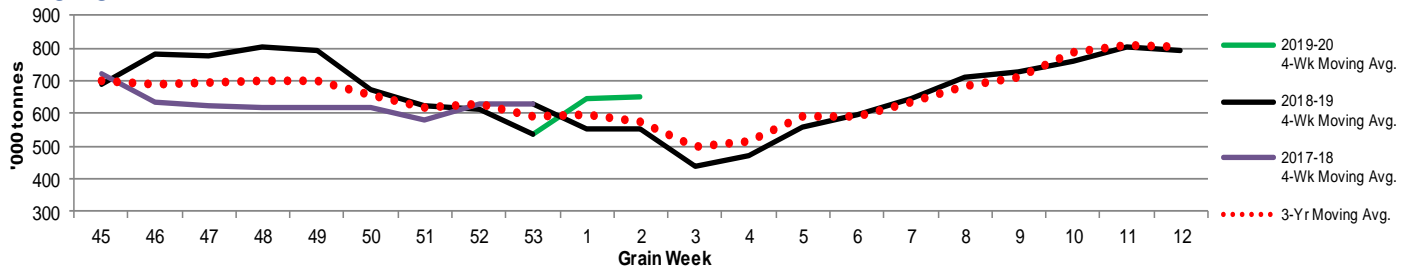
Months	Aug	Sep	Oct	Nov	Dec	Jan	Feb	Mar	Apr	May	Jun	Jul
Weeks	1-5	6-9	10-14	15-18	19-22	23-27	28-31	32-35	36-39	40-44	45-48	49-53
2018-19	31,421	32,599	44,576	36,393	33,023	35,925	20,464	24,145	33,866	41,803	32,077	30,920
2017-18	30,257	34,807	35,650	40,849	29,069	30,453	19,212	26,541	32,503	38,863	26,637	27,864
3-Yr Avg.	30,958	33,617	38,742	40,573	30,296	31,716	21,829	28,824	34,041	39,479	29,289	28,450
Var % to Last Year	4%	-6%	25%	-11%	14%	18%	7%	-9%	4%	8%	20%	11%
Var % to 3-Yr Avg.	1%	-3%	15%	-10%	9%	13%	-6%	-16%	-1%	6%	10%	9%

**5. Shipments**

**5-A Shipments from Port Terminals ('000 tonnes) – This Year-to-Date as of Week 2 and Variance to Last Year-to-Date**

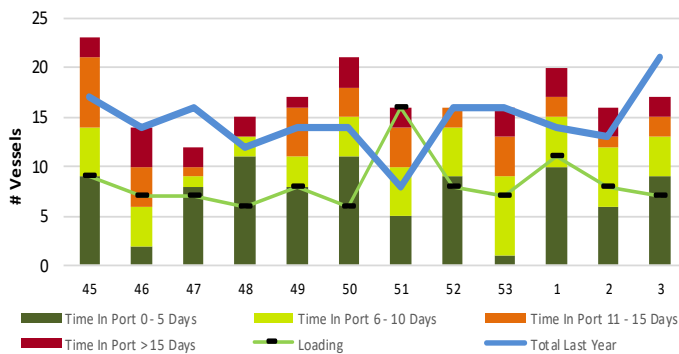
	Vancouver	Prince Rupert	West Coast	Thunder Bay	Churchill	Total
2019-20	1,074.6	114.0	1,188.6	354.1	-	1,542.7
2018-19	470.2	190.9	661.1	186.8	-	847.9
3-Yr Avg.	740.8	131.1	872.0	251.7	-	1,123.7
Var % to Last Year	129%	-40%	80%	90%	n/a	82%
Var % to 3-Yr Avg.	45%	-13%	36%	41%	n/a	37%

**5-B Weekly Shipments ('000 tonnes) from Port Terminals - This year 4-Week moving avg. vs. last year 4-Week moving avg. and the 3-Year moving avg.**

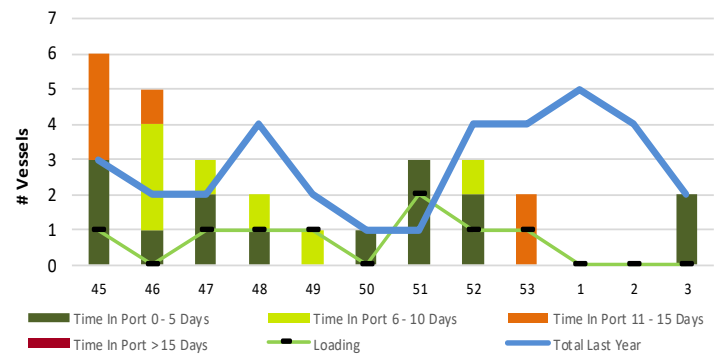


**6. Vessels**

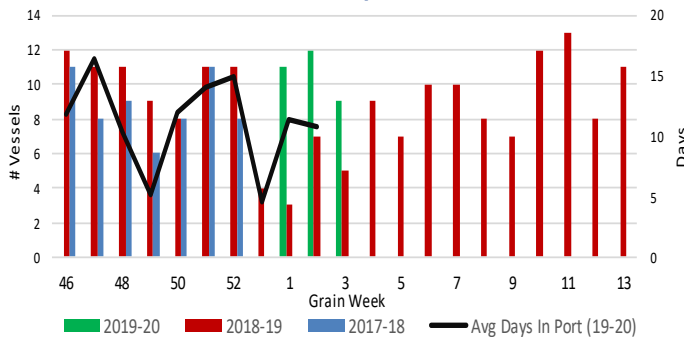
**6-A Vessel Lineup at Vancouver as of Week 3 2019-20**



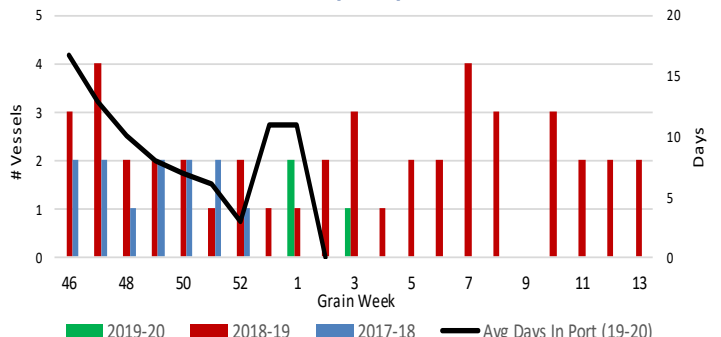
**6-C Vessel Lineup at Prince Rupert as of Week 3 2019-20**



**6-B Vessels Cleared at Vancouver up to Week 3 2019-20**



**6-D Vessels Cleared at Prince Rupert up to Week 3 2019-20**



Note: The 'Time in Port' measure for 6-A and 6-C is calculated as how long each vessel in the lineup has been in port as at Sunday of that grain week. The 'Avg Days in Port' measure for 6-B and 6-D is the average number of days that all vessels which cleared that week were in port. These measures use vessel data provided by the BC Chamber of Shipping.