

# Grain Monitoring Program

## Weekly Performance Update

November 17, 2020

For Grain Week 14 (2020-21 CY)

### Summary

	Week 14	Week 13	Var. from Last Year	
<b>1. Stocks in Store ('000 tonnes)</b>				
Country Elevators	↑ 4,459.2	4,438.7	33%	
% of Working Capacity	85%	85%		
Terminal Elevators	↑ 1,397.2	1,229.9	2%	
% of Working Capacity	72%	65%		
<b>2. Country Deliveries ('000 tonnes)</b>				
Country Deliveries	↓ 1,264.6	1,285.1	16%	
<b>3. Railcar Supply to Western Ports (Cars)</b>				
CN Allocation Plan	↑ 5,148	5,081	2%	
CN Unloads	↓ 5,247	5,428	-3%	
CP Allocation Plan	n/a	n/a	n/a	
CP Unloads	↓ 5,203	5,805	11%	
<b>4. Port Performance (Cars)</b>				
Total Weekly Unloads	↓ 10,450	11,233	3%	
4-Week Rolling Average	↓ 10,863	11,032	n/a	
Var. to 4-Week Rolling Average	↓ -4%	2%	n/a	
YTD Unloads	↑ 140,617	130,167	25%	
Weekly Out-of-Car Time	↑ 18.7%	7.3%	204.6%	
<b>5. Terminal Shipments Year-to-Date ('000 tonnes)</b>				
Vancouver	↑ 8,003.1	7,387.5	30%	
Prince Rupert	↑ 1,593.5	1,427.3	28%	
Churchill	— 95.7	95.7	-30%	
Thunder Bay	↑ 2,828.7	2,637.9	8%	
Total Western Canada	12,521.0	11,548.4	23%	
<b>6. Vessels as at Nov 15, 2020</b>				
	Week 15	Week 14	Var. from Last Year	
Vancouver	Vessel Lineup in port	↑ 38	34	23%
	Vessels Cleared	↓ 13	14	225%
	Vessels Arrived	↑ 17	14	55%
Pr. Rupert	Vessel Lineup in port	↑ 8	6	33%
	Vessels Cleared	↑ 3	2	0%
	Vessels Arrived	↑ 5	3	150%
<b>Vessels Inbound Nov 16, 2020 to Nov 22, 2020 (Week 16)</b>				
Vancouver	14			
Prince Rupert	4			
<b>7. Weather</b>				
	Week 14 Actual	Week 15 Actual	Week 16 Forecast	
Winnipeg <-25°C	0	0	0	
Edmonton <-25°C	0	0	0	
Vancouver Days Precip > 8mm	2	2	7	

### 1. Stocks in Store: (Page 2)

- Country stocks increased to 4.46 MMT in Week 14 utilizing 85% of the system's working capacity. Space in primary elevators is good.
- Total western port terminal stocks increased to 1.40 MMT in Week 14, utilizing 72% of the working capacity.

### 2. Country Deliveries: (Page 2)

- Deliveries to primary elevators were 1.26 MMT in Week 14.

### 3. Railcar Supply: (Page 3)

- Railcar allocation plans are supplied by CN to Week 16 2020-21 (see page 3 for details).

### 4. Port Performance: (Page 4)

- Total western port unloads were 4% lower than the 4-week moving average and 3% higher than Week 14 last year.
- West Coast unloads were 8,425 cars (Vancouver 7,136 and Prince Rupert 1,289), even with the 4-week moving average and 14% higher than Week 14 last year.
- Thunder Bay unloads were 2,025 cars, 14% lower than the 4-week moving average and 23% lower than Week 14 last year.
- Churchill unloads were 0 cars, 100% lower than the 4-week average and 100% lower than Week 14 last year.
- Year-to-date total western port unloads are 25% higher than the same period last year. The corresponding tonnage is 26% higher than the same period last year.
- The total average terminal out-of-car time (OCT) increased to 18.7% from 7.3% in the previous week. The OCT for Week 14 was 20.6% at Vancouver and 10.0% at Thunder Bay. At the time of publishing, Prince Rupert has not yet reported their Week 14 OCT.

### 5. Shipments: (Page 5)

- Year-to-date Western Canadian shipments from port terminal elevators at Week 14 are 23% higher than the same period last year and 17% higher than the 3-year average.

### 6. Vessels: (Page 5)

- Week 15 lineup at Vancouver increased to 38 vessels (The current one-year average at Vancouver is 25 vessels). Of the 38, 11 were at berth, 9 were anchored at English Bay, 1 was anchored at Burrard Inlet, and 17 were anchored at Vancouver Island.
- Prince Rupert vessel lineup increased to 8 vessels (The current one-year average at Prince Rupert is 5 vessels).
- Vessels cleared from Vancouver were 13, and from Prince Rupert were 3 in Week 15 of the 2020-21 crop year.

### 7. Weather: (Page 6)

- Temperatures across the prairies are forecasted to remain above -25C. Railways are not expected to invoke their winter operating plans.
- Vancouver is forecasted to receive daily precipitation exceeding 8mm every day in Week 16 (Nov 16 – 22). This volume of rain may intermittently delay loading grain onto vessels but will have no effect on unloading railcars.

## 1. Stocks in Store

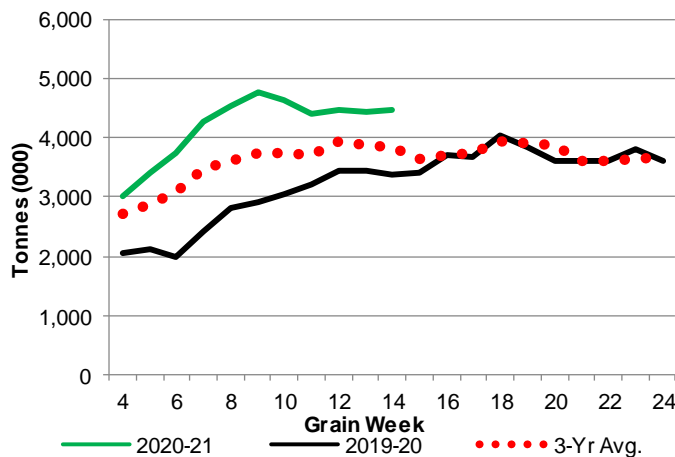
### 1-A1 Country Stocks ('000 tonnes) – Week 14

	MB	SK	AB	BC	Total
2020-21	896.8	2,279.7	1,257.0	25.7	4,459.2
2019-20	558.9	1,769.7	1,010.8	24.0	3,363.4
3-Yr Avg.	748.3	1,965.6	1,099.6	22.9	3,836.4
Var % - LY	60%	29%	24%	7%	33%
Var % 3-Yr Avg.	20%	16%	14%	12%	16%
Storage Capacity	1,574.0	4,071.0	2,353.8	36.7	8,035.5
Estimated Working Capacity	1,023.1	2,646.2	1,530.0	23.9	5,223.2
20-21 % of Wkg Cap	88%	86%	82%	108%	85%

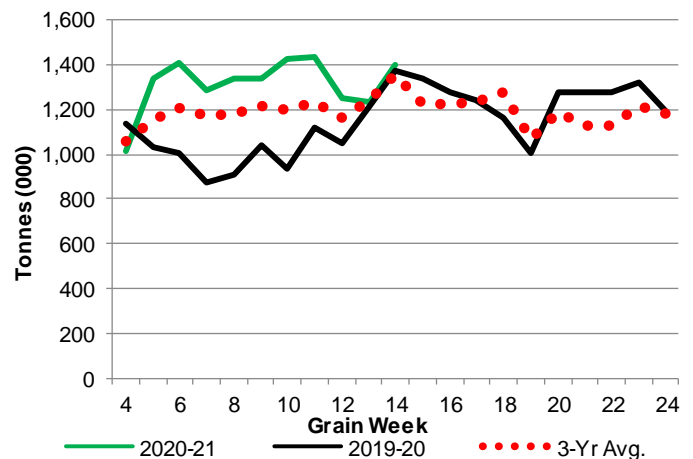
### 1-B1 Terminal Stocks ('000 tonnes) – Week 14

	VC	PR	West Coast	CH	TB	Total
2020-21	638.3	140.8	779.1	0.7	617.4	1,397.2
2019-20	691.1	154.1	845.2	28.3	495.2	1,368.7
3-Yr Avg.	619.1	143.6	762.7	9.9	586.7	1,359.3
Var % - LY	-8%	-9%	-8%	-98%	25%	2%
Var % 3-Yr Avg.	3%	-2%	2%	-93%	5%	3%
Storage Capacity	1290.5	209.5	1,500.0	140.0	1,127.5	2,767.5
Estimated Working Capacity	903.4	146.7	1050.1	98.0	789.2	1937.3
20-21 % of Wkg Cap	71%	96%	74%	1%	78%	72%

### 1-A2 Weekly Country Stocks in Store



### 1-B2 Weekly Terminal Stocks in Store

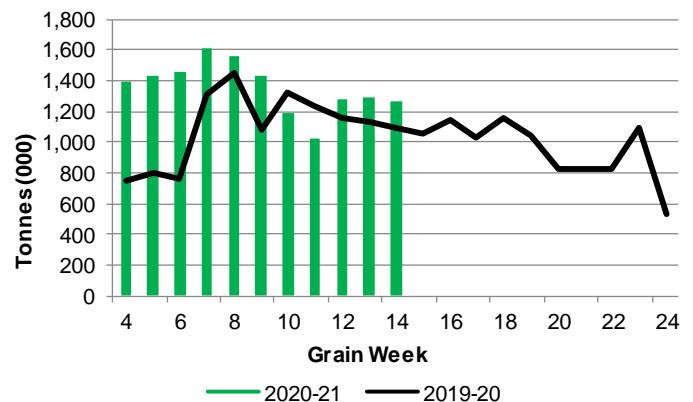


## 2. Country Deliveries

### 2-A Country Deliveries ('000 tonnes) – Week 14

	MB	SK	AB	BC	Total
2020-21	245.0	659.7	356.1	3.8	1,264.6
2019-20	215.3	590.7	276.7	10.1	1,092.8
4 Wk Avg	211.6	658.5	337.0	6.6	1,213.7
Var % to Last Year	14%	12%	29%	-62%	16%
Var % To 4 Wk Avg	16%	0%	6%	-42%	4%

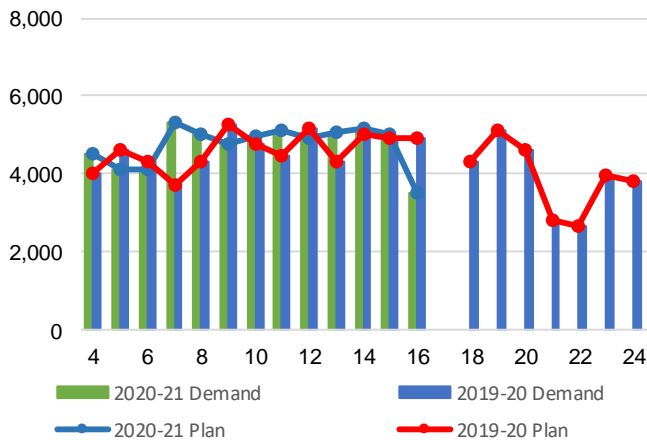
### 2-B 2019-20 Weekly Country Deliveries



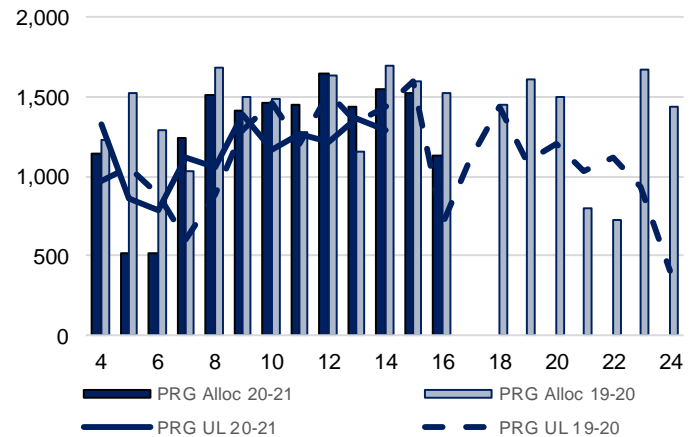
### 3. Railcar Supply

**Special Note to readers:** CP discontinued publishing weekly railcar spotting plans in Week 12 2014-15 (GCRS Service Report). CN continues to publish a weekly plan and the graphs below reflect CN's plan to Week 16 2020-21. Note that the orders accepted do not necessarily reflect shipper demand, but rather the railways' acceptance of shippers' car orders. When both railways provide the order fulfillment data requested with the expansion of the GMP mandate, which was announced on February 3, 2014, a complete set of metrics will be presented.

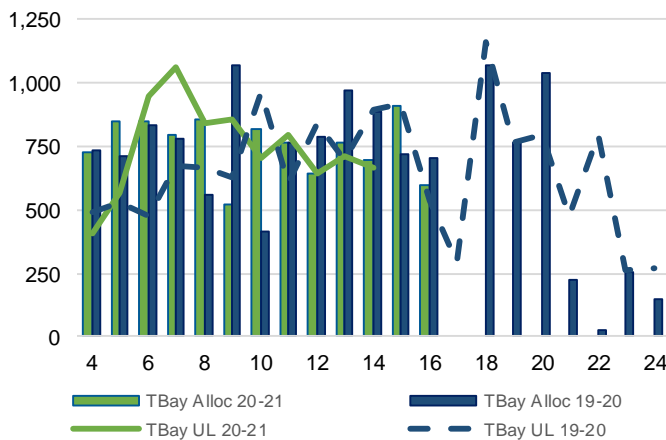
**3-A: Canadian National Planned Car Allocation vs. Demand (cars) To Week 16 2020-21**



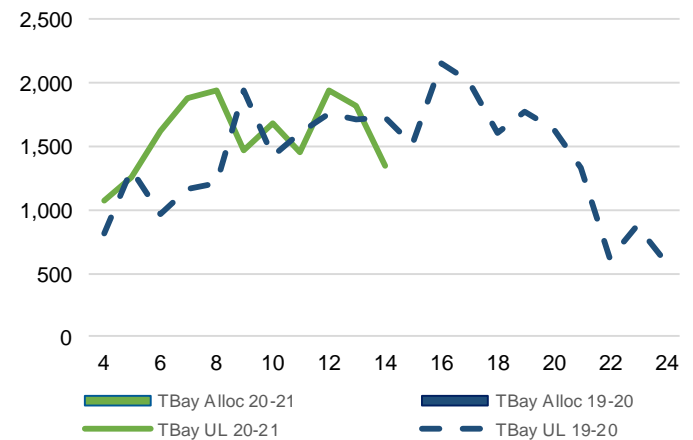
**3-B3: Canadian National Planned Car Allocation to Western Ports Vs. Corridor Unloads at Port (cars) – Prince Rupert**



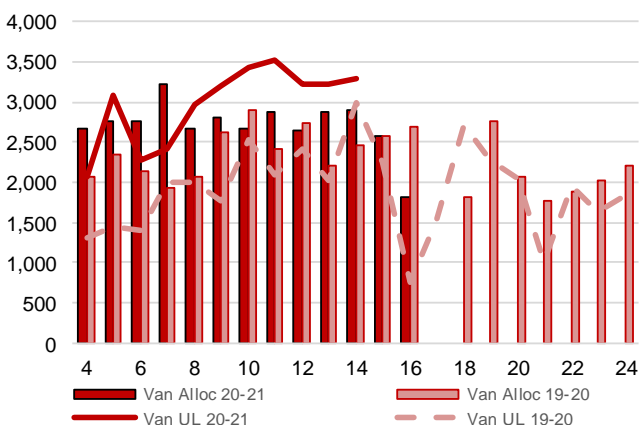
**3-B1: Canadian National Planned Car Allocation to Western Ports Vs. Corridor Unloads at Port (cars) – Thunder Bay**



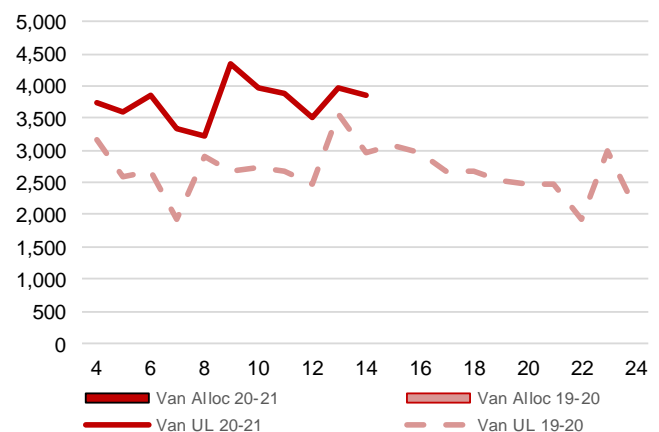
**3-C1: Canadian Pacific Planned Car Allocation to Western Ports vs. Corridor Unloads at Port (cars) – Thunder Bay**



**3-B2: Canadian National Planned Car Allocation to Western Ports Vs. Corridor Unloads at Port (cars) – Vancouver**



**3-C2: Canadian Pacific Planned Car Allocation to Western Ports vs. Corridor Unloads at Port (cars) – Vancouver**



## 4. Port Performance

### 4-A Weekly Unloads by Port (Cars) – This Year for Week 14, 4-Week Moving Average and Variances

	Vancouver	Prince Rupert	West Coast	Thunder Bay	Churchill	Total
2020-21	7,136	1,289	8,425	2,025	-	10,450
2019-20	5,966	1,433	7,399	2,628	71	10,098
4-Wk Avg.	7,123	1,282	8,405	2,346	112	10,863
Var % to Last Year	20%	-10%	14%	-23%	-100%	3%
Var % to 4-Wk Avg.	0%	1%	0%	-14%	-100%	-4%

### 4-B Terminal Unloads by Port – This Year-to-Date as at Week 14 and Variances

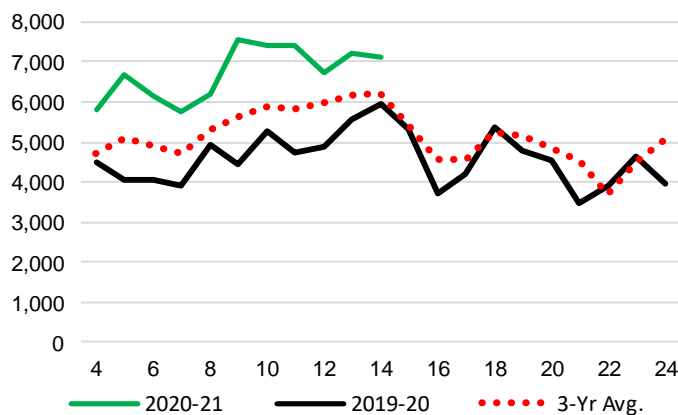
YTD Unloads (cars)	Vancouver	Prince Rupert	West Coast	Thunder Bay	Churchill	Total
2020-21	91,337	16,770	108,107	31,447	1,063	140,617
2019-20	68,543	13,759	82,302	28,422	1,475	112,199
3-Yr Avg	75,156	15,521	90,677	28,948	846	120,471
Var % to Last Year	33%	22%	31%	11%	-28%	25%
Var % to 3-Yr Avg	22%	8%	19%	9%	26%	17%

YTD Unloads ('000 tonnes)	Vancouver	Prince Rupert	West Coast	Thunder Bay	Churchill	Total
2020-21	8,445.1	1,566.7	10,011.8	2,926.6	95.5	13,033.9
2019-20	6,323.1	1,272.1	7,595.2	2,633.6	133.7	10,362.5
3-Yr Avg.	6,898.3	1,447.6	8,345.9	2,694.9	76.4	11,117.2
Var % to Last Year	34%	23%	32%	11%	-29%	26%
Var % to 3-Yr Avg.	22%	8%	20%	9%	25%	17%

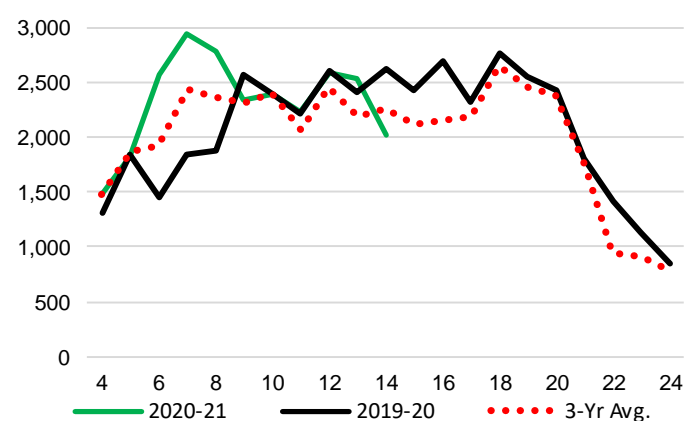
### 4-C Vancouver Unloads (cars)

(This Year vs. Last Year and the 3-Year Average)



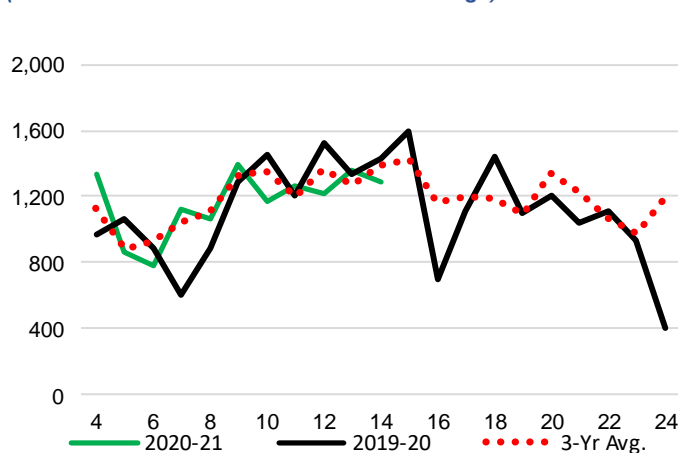
### 4-E Thunder Bay Unloads (cars)

(This Year vs. Last Year and the 3-Year Average)

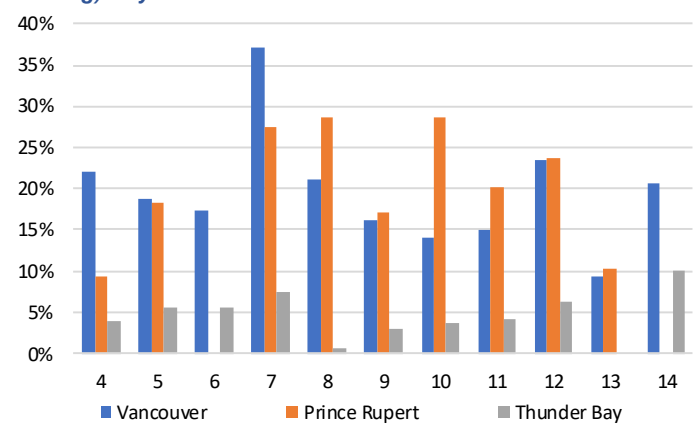


### 4-D Prince Rupert Unloads (cars)

(This Year vs. Last Year and the 3-Year Average)



### 4-F Weekly Out-of-Car Time (% of hours out-of-cars / total hours working) – by Port to Week 14



Out-of-car time is measured weekly and uses data from terminal elevators on the total number of hours the facilities are open & staffed (including overtime hours) and the corresponding number of hours that terminals have no railcars available to unload. The measure is expressed as a percentage (hours without cars to the total number of hours working).

**4-G Monthly Unloads (cars) – This year vs. Last Year and the 3-Year Average to Week 13 2020-21**

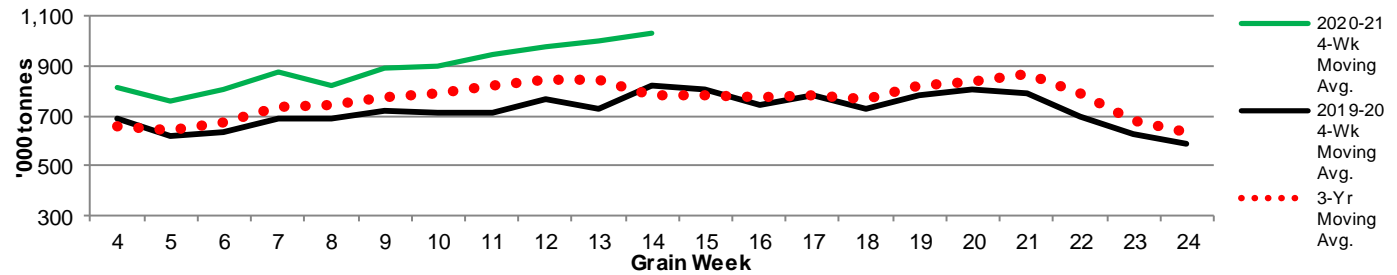
Months	Aug	Sep	Oct	Nov	Dec	Jan	Feb	Mar	Apr	May	Jun	Jul
Weeks	1-4	5-9	10-13	14-17	18-22	23-26	27-30	31-35	36-39	40-43	44-48	49-52
2020-21	35,688	50,352	44,127	-	-	-	-	-	-	-	-	-
2019-20	29,814	36,009	36,278	34,190	38,959	22,691	22,522	38,451	39,693	38,265	46,717	34,656
3-Yr Avg.	29,918	42,043	38,597	34,340	39,551	25,789	21,220	33,125	35,354	35,424	39,364	31,147
Var % to Last Year	20%	40%	22%									
Var % to 3-Yr Avg.	19%	20%	14%									

**5. Shipments**

**5-A Shipments from Port Terminals ('000 tonnes) – This Year-to-Date as of Week 14 and Variance to Last Year-to-Date**

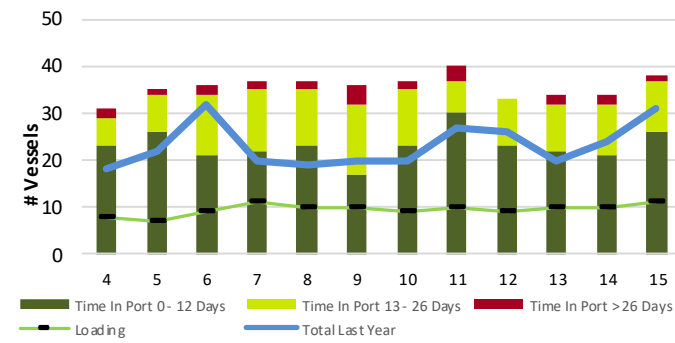
	Vancouver	Prince Rupert	West Coast	Thunder Bay	Churchill	Total
2020-21	8,003.1	1,593.5	9,596.6	2,828.7	95.7	12,521.0
2019-20	6,163.1	1,247.7	7,410.8	2,610.8	137.2	10,158.8
3-Yr Avg.	6,591.7	1,424.6	8,016.4	2,566.5	86.6	10,669.4
Var % to Last Year	30%	28%	29%	8%	-30%	23%
Var % to 3-Yr Avg.	21%	12%	20%	10%	11%	17%

**5-B Weekly Shipments ('000 tonnes) from Port Terminals - This year 4-Week moving avg. vs. last year 4-Week moving avg. and the 3-Year moving avg.**

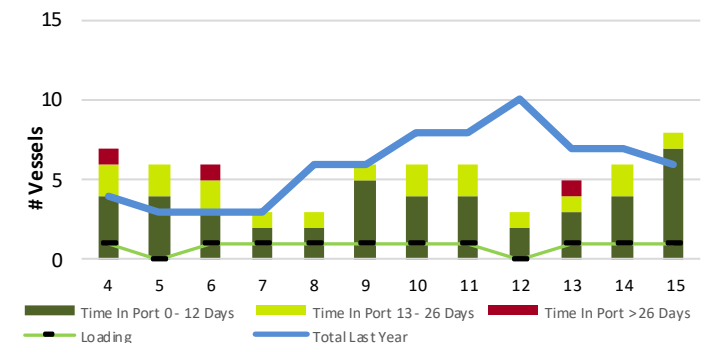


**6. Vessels**

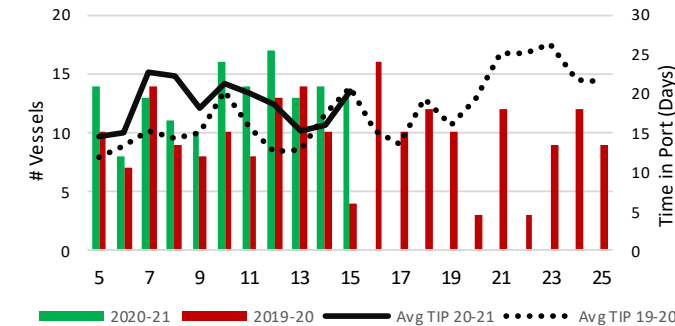
**6-A Vessel Lineup at Vancouver as of Week 15 2020-21**



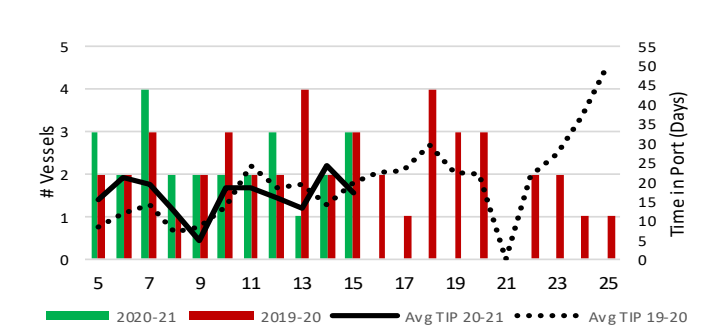
**6-C Vessel Lineup at Prince Rupert as of Week 15 2020-21**



**6-B Vessels Cleared at Vancouver up to Week 15 2020-21**



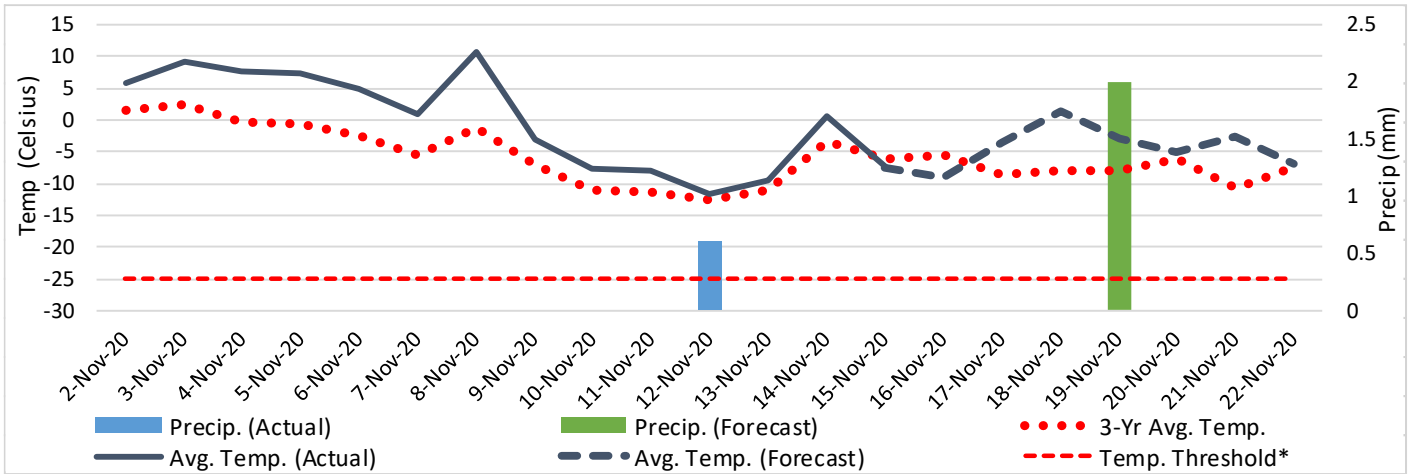
**6-D Vessels Cleared at Prince Rupert up to Week 15 2020-21**



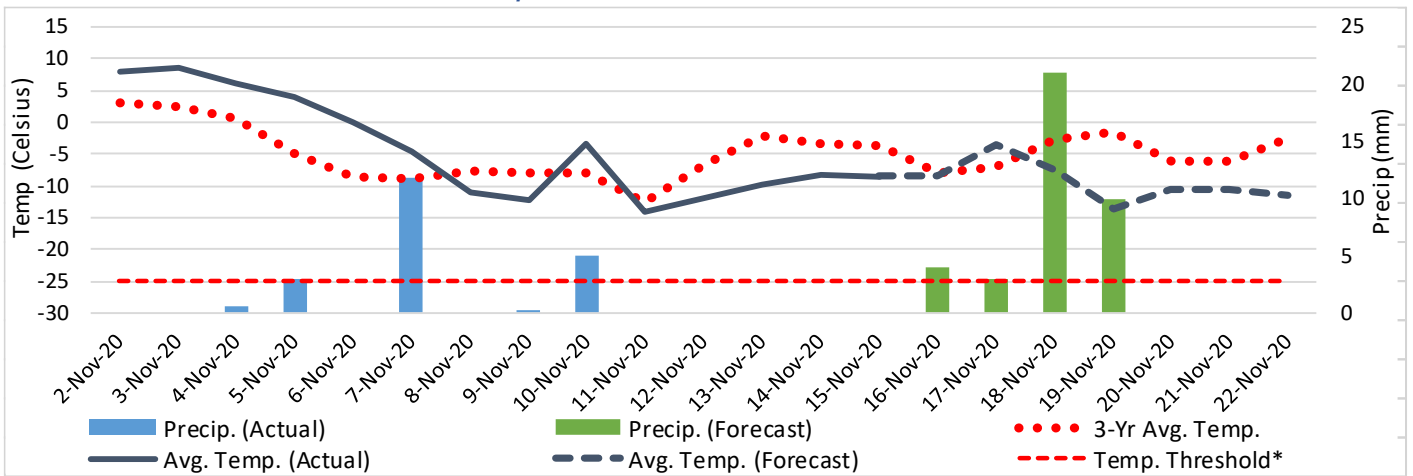
Note: The 'Time in Port' measure for 6-A and 6-C is calculated as how long each vessel in the lineup has been in port as at Sunday 23:59 of that grain week. The 'Avg Time in Port (TIP)' measure for 6-B and 6-D is the average number of days that all vessels which cleared that week were in port. These measures use vessel data provided by the BC Chamber of Shipping and Pacific Pilotage Authority.

# 7. Weather

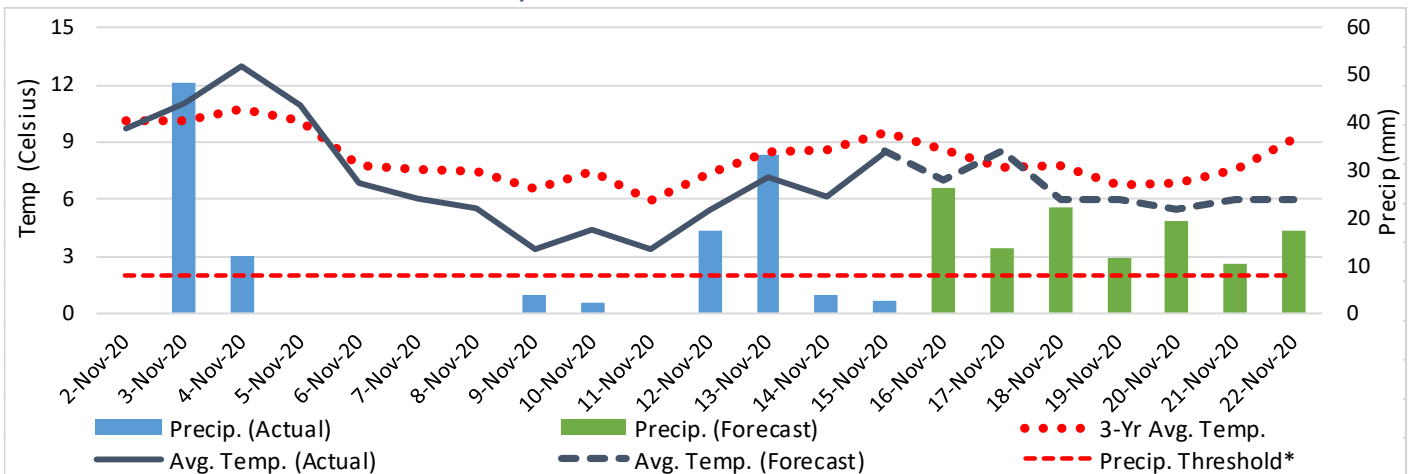
7-A Actual and Forecasted Weather at Winnipeg up to Week 16 2020-21



7-B Actual and Forecasted Weather at Edmonton up to Week 16 2020-21



7-C Actual and Forecasted Weather at Vancouver up to Week 16 2020-21



\*Note: Precip Threshold refers to 8mm of rain. At this level of precipitation, vessel loading may be delayed. The duration of the delay will be dependent on the ship, the duration of rainfall, and the amount of precipitation. 8mm is a general guideline and is not meant to be a definitive limit.

Source: Environment Canada, The Weather Network (Forecast)