

Grain Monitoring Program

Weekly Performance Update

April 27, 2021

For Grain Week 37 (2020-21 CY)

Summary

	Week 37	Week 36	Var. from Last Year	
1. Stocks in Store ('000 tonnes)				
Country Elevators	↓ 4,052.2	4,267.1	-7%	
% of Working Capacity	76%	80%		
Terminal Elevators	↓ 1,452.5	1,455.5	-3%	
% of Working Capacity	75%	75%		
2. Country Deliveries ('000 tonnes)				
Country Deliveries	↓ 972.4	1,103.5	-20%	
3. Railcar Supply to Western Ports (Cars)				
CN Allocation Plan	↓ 4,033	4,301	-18%	
CN Unloads	↓ 4,857	5,257	2%	
CP Allocation Plan	n/a	n/a	n/a	
CP Unloads	↑ 5,588	5,334	1%	
4. Port Performance (Cars)				
Total Weekly Unloads	↓ 10,445	10,591	1%	
4-Week Rolling Average	↑ 9,584	9,090	n/a	
Var. to 4-Week Rolling Average	↓ 9%	17%	n/a	
YTD Unloads	↑ 346,286	335,841	25%	
Weekly Out-of-Car Time	↑ 7.8%	6.6%	225.7%	
5. Terminal Shipments Year-to-Date ('000 tonnes)				
Vancouver	↑ 23,108.9	22,384.5	39%	
Prince Rupert	↑ 4,085.0	3,955.4	14%	
Churchill	— 95.7	95.7	-30%	
Thunder Bay	↑ 5,362.2	5,156.7	6%	
Total Western Canada	32,651.8	31,592.3	28%	
6. Vessels as at Apr 25, 2021				
	Week 38	Week 37	Var. from Last Year	
Vancouver	Vessel Lineup in port	— 20	20	-17%
	Vessels Cleared	↓ 10	11	-29%
	Vessels Arrived	↑ 10	8	-29%
Pr. Rupert	Vessel Lineup in port	↑ 5	3	-17%
	Vessels Cleared	— 2	2	0%
	Vessels Arrived	↑ 4	3	33%
Vessels Inbound Apr 26, 2021 to May 02, 2021 (Week 39)				
Vancouver	17			
Prince Rupert	3			

1. Stocks in Store: (Page 2)

- Country stocks decreased to 4.05 MMT in Week 37 utilizing 76% of the system's working capacity. Space in primary elevators is good.
- Total western port terminal stocks decreased to 1.45 MMT in Week 37, utilizing 75% of the working capacity.

2. Country Deliveries: (Page 2)

- Deliveries to primary elevators were 0.97 MMT in Week 37.
- Axle Weight Restrictions (road bans) are in effect across the prairies.

3. Railcar Supply: (Page 3)

- Railcar allocation plans are supplied by CN to Week 39 2020-21 (see page 3 for details).

4. Port Performance: (Page 4)

- Total western port unloads were 9% higher than the 4-week moving average and 1% higher than Week 37 last year.
- West Coast unloads were 8,369 cars (Vancouver 7,061 and Prince Rupert 1,308), 7% higher than the 4-week moving average and 11% higher than Week 37 last year.
- Thunder Bay unloads were 2,076 cars, 19% higher than the 4-week moving average and 25% lower than Week 37 last year.
- Year-to-date total western port unloads are 25% higher than the same period last year. The corresponding tonnage is 27% higher than the same period last year.
- The total average terminal out-of-car time (OCT) increased to 7.8% from 6.6% in the previous week. The OCT for Week 37 was 10.7% at Vancouver and 1.3% at Thunder Bay. At the time of publishing, Prince Rupert had not yet reported their Week 37 OCT.

5. Shipments: (Page 5)

- Year-to-date Western Canadian shipments from port terminal elevators at Week 37 are 28% higher than the same period last year and 17% higher than the 3-year average.

6. Vessels: (Page 5)

- Week 38 lineup at Vancouver remained at 20 vessels (The current one-year average at Vancouver is 25 vessels). Of the 20, 9 were at berth, 8 were anchored at English Bay, 0 were anchored at Burrard Inlet, and 3 were anchored at Vancouver Island.
- Prince Rupert vessel lineup increased to 5 vessels (The current one-year average at Prince Rupert is 5 vessels).
- Vessels cleared from Vancouver were 10, and from Prince Rupert were 2 in Week 38 of the 2020-21 crop year.

1. Stocks in Store

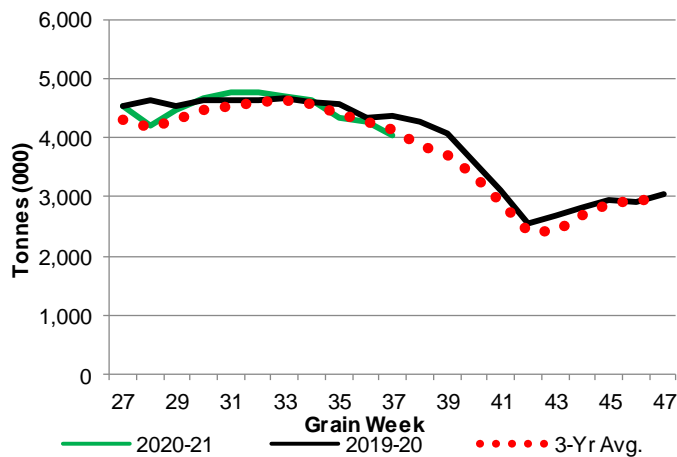
1-A1 Country Stocks ('000 tonnes) – Week 37

	MB	SK	AB	BC	Total
2020-21	723.9	2,060.0	1,240.3	28.0	4,052.2
2019-20	766.2	2,237.7	1,345.3	23.6	4,372.8
3-Yr Avg.	786.1	2,109.8	1,229.0	23.2	4,148.1
Var % - LY	-6%	-8%	-8%	19%	-7%
Var % 3-Yr Avg.	-8%	-2%	1%	21%	-2%
Storage Capacity	1,606.5	4,110.2	2,450.3	39.7	8,206.7
Estimated Working Capacity	1,044.3	2,671.6	1,592.7	25.8	5,334.4
20-21 % of Wkg Cap	69%	77%	78%	109%	76%

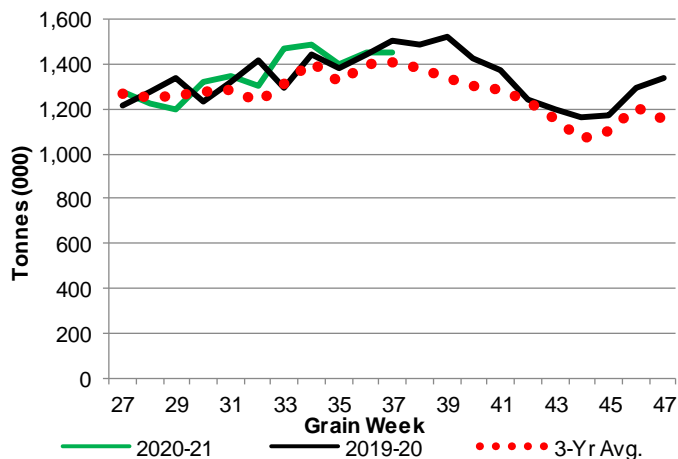
1-B1 Terminal Stocks ('000 tonnes) – Week 37

	VC	PR	West Coast	CH	TB	Total
2020-21	718.2	116.9	835.1	0.7	616.7	1,452.5
2019-20	729.1	110.4	839.5	0.7	660.0	1,500.2
3-Yr Avg.	652.2	121.7	773.9	0.7	631.9	1,406.4
Var % - LY	-1%	6%	-1%	0%	-7%	-3%
Var % 3-Yr Avg.	10%	-4%	8%	0%	-2%	3%
Storage Capacity	1,290.5	209.5	1,500.0	140.0	1,127.5	2,767.5
Estimated Working Capacity	903.4	146.7	1050.1	98.0	789.2	1937.3
20-21 % of Wkg Cap	79%	80%	80%	1%	78%	75%

1-A2 Weekly Country Stocks in Store



1-B2 Weekly Terminal Stocks in Store

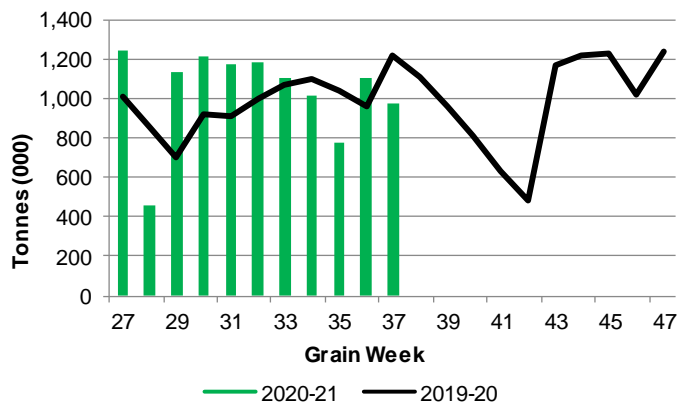


2. Country Deliveries

2-A Country Deliveries ('000 tonnes) – Week 37

	MB	SK	AB	BC	Total
2020-21	140.6	506.8	321.9	3.1	972.4
2019-20	199.5	674.9	334.5	8.8	1,217.7
4 Wk Avg	165.5	510.5	287.6	2.9	966.5
Var % to Last Year	-30%	-25%	-4%	-65%	-20%
Var % To 4 Wk Avg	-15%	-1%	12%	7%	1%

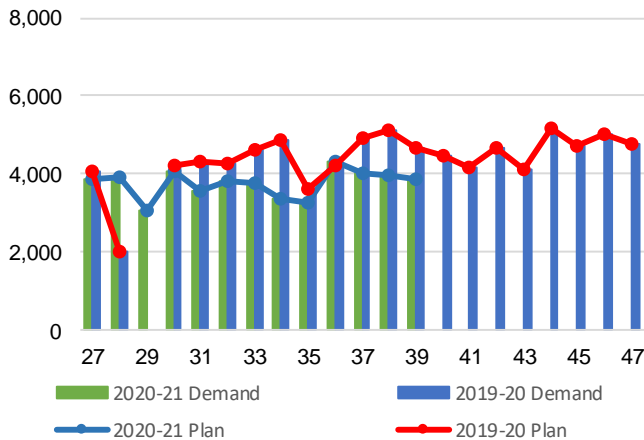
2-B 2019-20 Weekly Country Deliveries



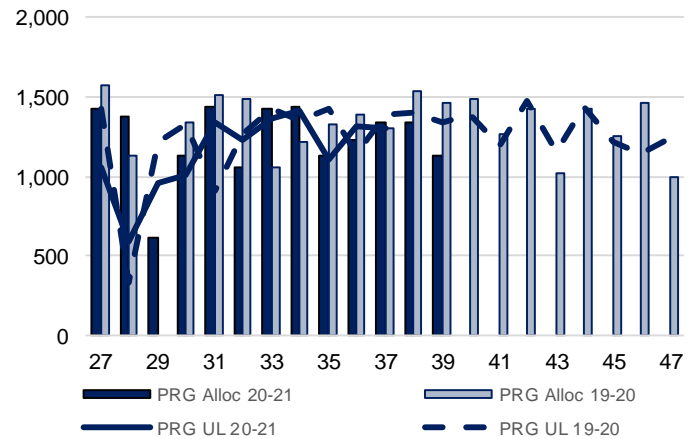
3. Railcar Supply

Special Note to readers: CP discontinued publishing weekly railcar spotting plans in Week 12 2014-15 (GCRS Service Report). CN continues to publish a weekly plan and the graphs below reflect CN's plan to Week 39 2020-21. Note that the orders accepted do not necessarily reflect shipper demand, but rather the railways' acceptance of shippers' car orders. When both railways provide the order fulfillment data requested with the expansion of the GMP mandate, which was announced on February 3, 2014, a complete set of metrics will be presented.

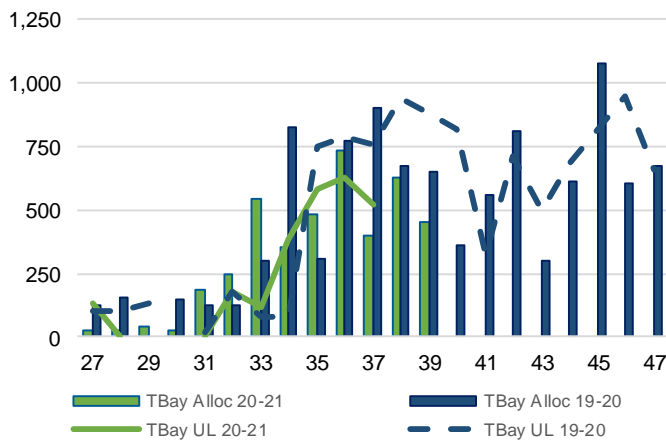
3-A: Canadian National Planned Car Allocation vs. Demand (cars) To Week 39 2020-21



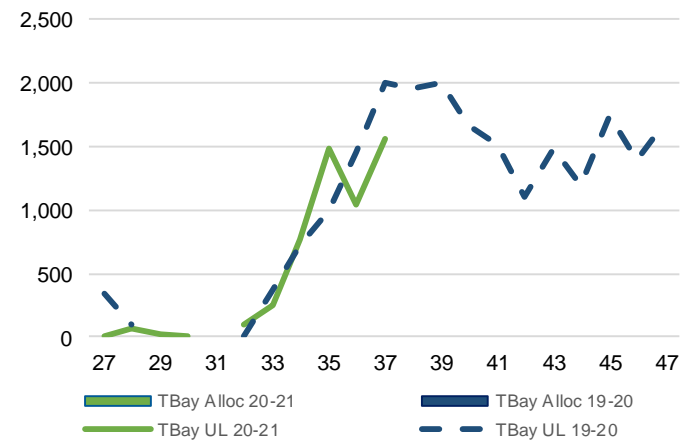
3-B3: Canadian National Planned Car Allocation to Western Ports Vs. Corridor Unloads at Port (cars) – Prince Rupert



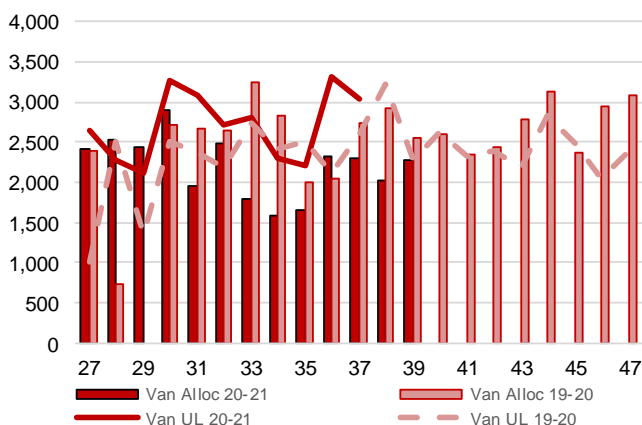
3-B1: Canadian National Planned Car Allocation to Western Ports Vs. Corridor Unloads at Port (cars) – Thunder Bay



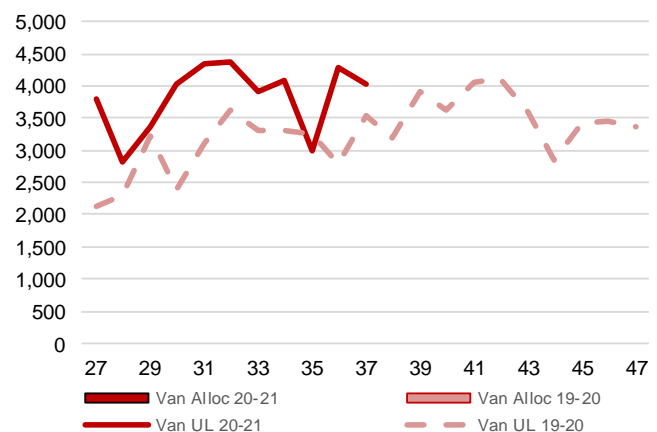
3-C1: Canadian Pacific Planned Car Allocation to Western Ports vs. Corridor Unloads at Port (cars) – Thunder Bay



3-B2: Canadian National Planned Car Allocation to Western Ports Vs. Corridor Unloads at Port (cars) – Vancouver



3-C2: Canadian Pacific Planned Car Allocation to Western Ports vs. Corridor Unloads at Port (cars) – Vancouver



4. Port Performance

4-A Weekly Unloads by Port (Cars) – This Year for Week 37, 4-Week Moving Average and Variances

	Vancouver	Prince Rupert	West Coast	Thunder Bay	Churchill	Total
2020-21	7,061	1,308	8,369	2,076	-	10,445
2019-20	6,140	1,391	7,531	2,762	-	10,293
4-Wk Avg.	6,558	1,285	7,842	1,742	-	9,584
Var % to Last Year	15%	-6%	11%	-25%	n/a	1%
Var % to 4-Wk Avg.	8%	2%	7%	19%	n/a	9%

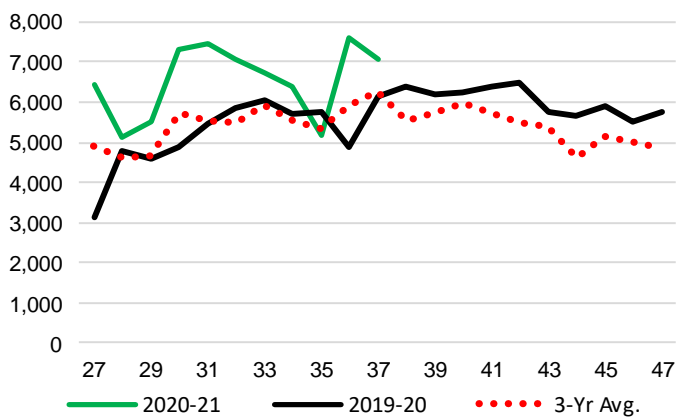
4-B Terminal Unloads by Port – This Year-to-Date as at Week 37 and Variances

YTD Unloads (cars)	Vancouver	Prince Rupert	West Coast	Thunder Bay	Churchill	Total
2020-21	240,711	43,690	284,401	60,822	1,063	346,286
2019-20	177,643	39,857	217,500	58,506	1,475	277,481
3-Yr Avg	199,188	42,781	241,969	56,691	846	299,506
Var % to Last Year	36%	10%	31%	4%	-28%	25%
Var % to 3-Yr Avg	21%	2%	18%	7%	26%	16%

YTD Unloads ('000 tonnes)	Vancouver	Prince Rupert	West Coast	Thunder Bay	Churchill	Total
2020-21	22,467.7	4,087.1	26,554.8	5,707.7	95.5	32,358.0
2019-20	16,299.8	3,672.3	19,972.1	5,417.8	133.7	25,523.6
3-Yr Avg.	18,337.5	3,976.5	22,314.0	5,281.7	76.4	27,672.1
Var % to Last Year	38%	11%	33%	5%	-29%	27%
Var % to 3-Yr Avg.	23%	3%	19%	8%	25%	17%

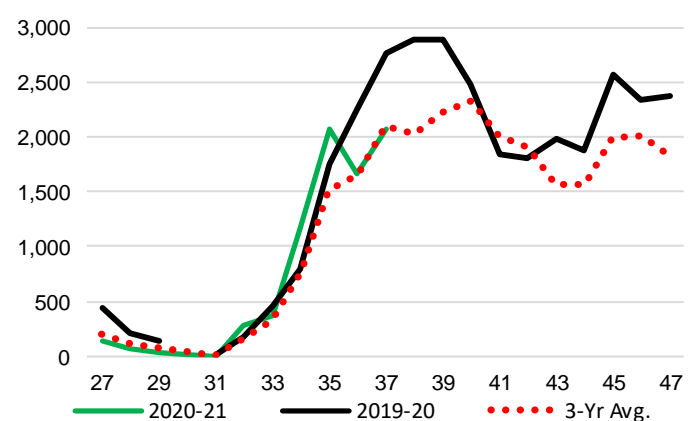
4-C Vancouver Unloads (cars)

(This Year vs. Last Year and the 3-Year Average)



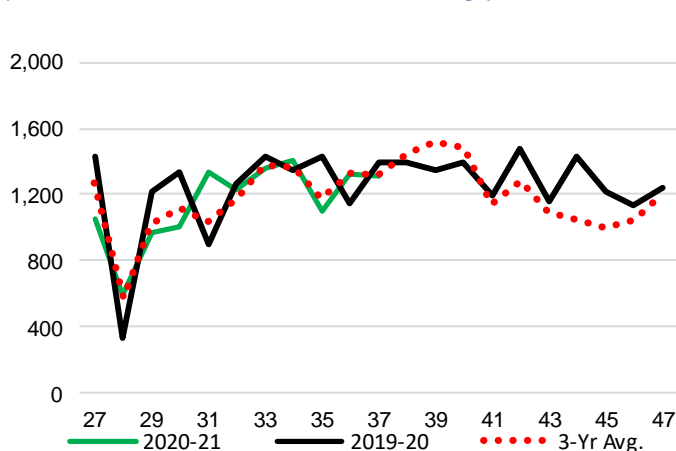
4-E Thunder Bay Unloads (cars)

(This Year vs. Last Year and the 3-Year Average)

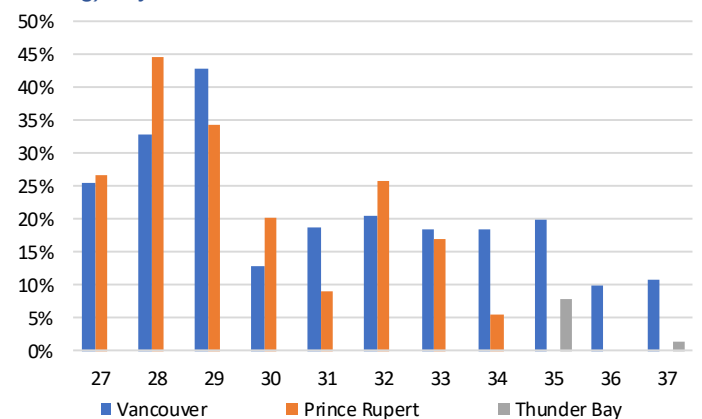


4-D Prince Rupert Unloads (cars)

(This Year vs. Last Year and the 3-Year Average)



4-F Weekly Out-of-Car Time (% of hours out-of-cars / total hours working) – by Port to Week 37



Out-of-car time is measured weekly and uses data from terminal elevators on the total number of hours the facilities are open & staffed (including overtime hours) and the corresponding number of hours that terminals have no railcars available to unload. The measure is expressed as a percentage (hours without cars to the total number of hours working).

4-G Monthly Unloads (cars) – This year vs. Last Year and the 3-Year Average to Week 35 2020-21

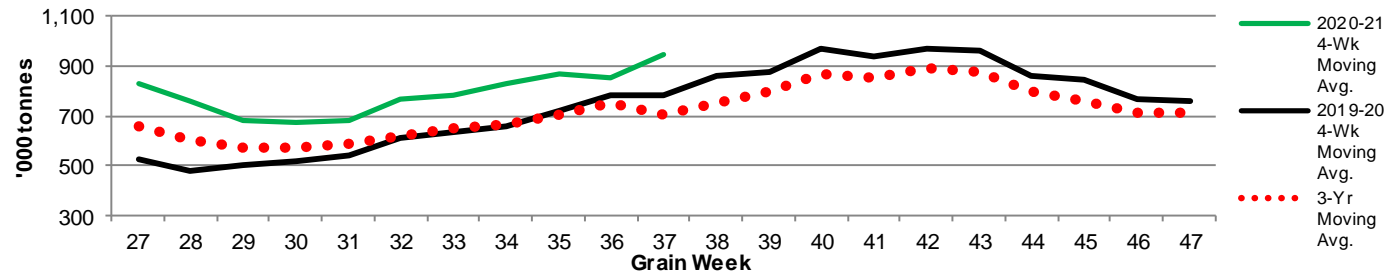
Months	Aug	Sep	Oct	Nov	Dec	Jan	Feb	Mar	Apr	May	Jun	Jul
Weeks	1-4	5-9	10-13	14-17	18-22	23-26	27-30	31-35	36-39	40-43	44-48	49-52
2020-21	35,688	50,352	44,342	42,742	45,462	35,328	28,210	43,126	-	-	-	-
2019-20	29,814	36,009	36,278	34,190	38,959	22,691	22,522	38,451	39,693	38,265	46,717	34,656
3-Yr Avg.	29,918	42,043	38,668	37,894	42,092	29,151	24,352	36,784	35,354	35,424	39,364	31,147
Var % to Last Year	20%	40%	22%	25%	17%	56%	25%	12%				
Var % to 3-Yr Avg.	19%	20%	15%	13%	8%	21%	16%	17%				

5. Shipments

5-A Shipments from Port Terminals ('000 tonnes) – This Year-to-Date as of Week 37 and Variance to Last Year-to-Date

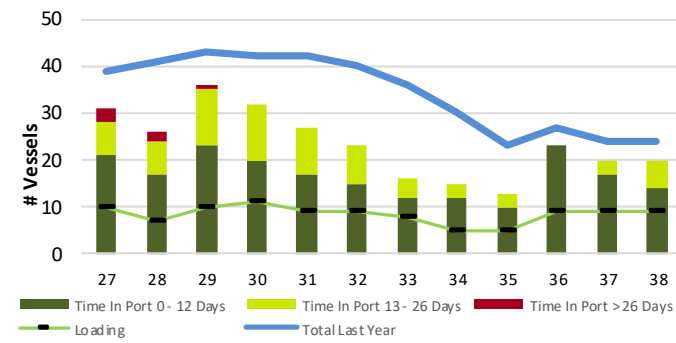
	Vancouver	Prince Rupert	West Coast	Thunder Bay	Churchill	Total
2020-21	23,108.9	4,085.0	27,193.9	5,362.2	95.7	32,651.8
2019-20	16,660.1	3,579.0	20,239.1	5,069.1	137.3	25,445.5
3-Yr Avg.	18,802.9	3,945.4	22,748.2	4,986.2	86.7	27,821.1
Var % to Last Year	39%	14%	34%	6%	-30%	28%
Var % to 3-Yr Avg.	23%	4%	20%	8%	10%	17%

5-B Weekly Shipments ('000 tonnes) from Port Terminals - This year 4-Week moving avg. vs. last year 4-Week moving avg. and the 3-Year moving avg.

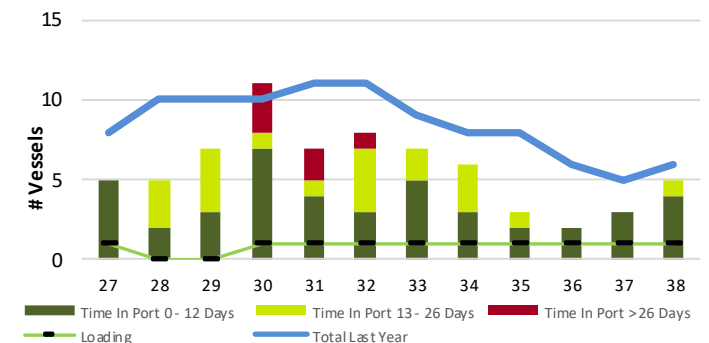


6. Vessels

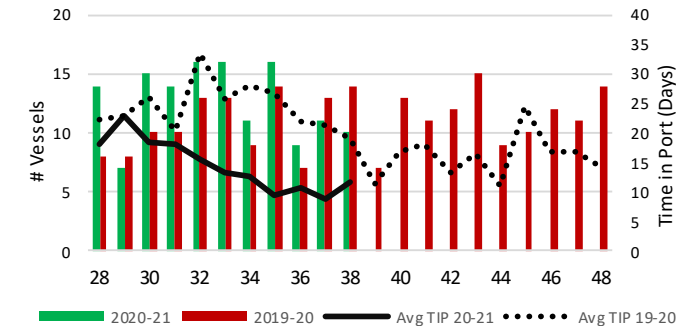
6-A Vessel Lineup at Vancouver as of Week 38 2020-21



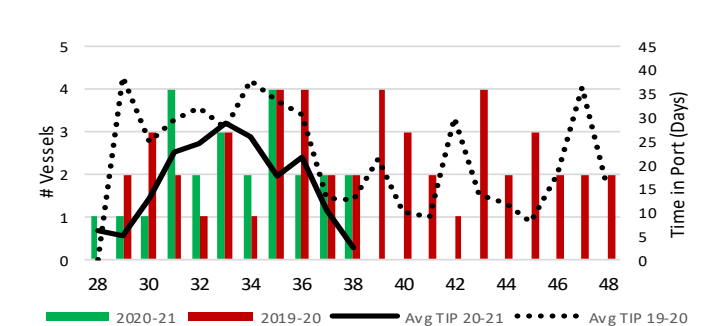
6-C Vessel Lineup at Prince Rupert as of Week 38 2020-21



6-B Vessels Cleared at Vancouver up to Week 38 2020-21



6-D Vessels Cleared at Prince Rupert up to Week 38 2020-21



Note: The 'Time in Port' measure for 6-A and 6-C is calculated as how long each vessel in the lineup has been in port as at Sunday 23:59 of that grain week. The 'Avg Time in Port (TIP)' measure for 6-B and 6-D is the average number of days that all vessels which cleared that week were in port. These measures use vessel data provided by the BC Chamber of Shipping and Pacific Pilotage Authority.