

Grain Monitoring Program

Weekly Performance Update

April 26, 2022

For Grain Week 37 (2021-22 CY)

Summary

	Week 37	Week 36	Var. from Last Year	
1. Stocks in Store ('000 tonnes)				
Country Elevators	↓ 4,070.5	4,080.2	1%	
% of Working Capacity	74%	74%		
Terminal Elevators	↑ 1,329.3	1,280.5	-9%	
% of Working Capacity	69%	66%		
2. Country Deliveries ('000 tonnes)				
Country Deliveries	↑ 491.1	475.9	-50%	
3. Railcar Supply to Western Ports (Cars)				
CN Allocation Plan	↑ n/a	1,593	-100%	
CN Unloads	↓ 1,927	2,096	-61%	
CP Allocation Plan	n/a	n/a	n/a	
CP Unloads	↓ 1,853	1,937	-68%	
4. Port Performance (Cars)				
Total Weekly Unloads	↓ 3,780	4,033	-65%	
4-Week Rolling Average	↑ 3,703	3,554	n/a	
Var. to 4-Week Rolling Average	↓ 2%	13%	n/a	
YTD Unloads	↑ 194,555	190,775	-44%	
Weekly Out-of-Car Time	↓ 4.0%	16.5%	-43.6%	
5. Terminal Shipments Year-to-Date ('000 tonnes)				
Vancouver	↑ 12,415.5	12,190.9	-46%	
Prince Rupert	↑ 1,702.3	1,656.1	-58%	
Churchill	— 0.0	0.0	-100%	
Thunder Bay	↑ 3,826.5	3,802.1	-29%	
Total Western Canada	17,944.3	17,649.1	-45%	
6. Vessels as at Apr 24, 2022				
	Week 38	Week 37	Var. from Last Year	
Vancouver	Vessel Lineup in port	↑ 8	4	-60%
	Vessels Cleared	↓ 2	6	-80%
	Vessels Arrived	↑ 6	5	-40%
Pr. Rupert	Vessel Lineup in port	— 0	0	-100%
	Vessels Cleared	↓ 1	2	-50%
	Vessels Arrived	— 1	1	-75%
Vessels Inbound Apr 25, 2022 to May 01, 2022 (Week 39)				
Vancouver	4			
Prince Rupert	2			

1. Stocks in Store: (Page 2)

- Country stocks decreased to 4.07 MMT in Week 37 utilizing 74% of the system's working capacity. Space in primary elevators is good.
- Total western port terminal stocks increased to 1.33 MMT in Week 37, utilizing 69% of the working capacity.

2. Country Deliveries: (Page 2)

- Deliveries to primary elevators were 0.49 MMT in Week 37.
- Axle Weight Restrictions (road bans) are in effect across the prairies.

3. Railcar Supply: (Page 3)

- Railcar allocation plans are supplied by CN to Week 36 2021-22 (see page 3 for details).

4. Port Performance: (Page 4)

- Total western port unloads were 2% higher than the 4-week moving average and 65% lower than Week 37 last year.
- West Coast unloads were 2,808 cars (Vancouver 2,550 and Prince Rupert 258), 1% lower than the 4-week moving average and 66% lower than Week 37 last year.
- Thunder Bay unloads were 972 cars, 13% higher than the 4-week moving average and 58% lower than Week 37 last year.
- Year-to-date total western port unloads are 44% lower than the same period last year. The corresponding tonnage is 43% lower than the same period last year.
- The total average terminal out-of-car time (OCT) decreased to 4.0% from 16.5% in the previous week. The OCT for Week 37 was 5.0% at Vancouver and 0.0% at Thunder Bay. At the time of publishing, Prince Rupert had not yet reported Week 37 OCT.

5. Shipments: (Page 5)

- Year-to-date Western Canadian shipments from port terminal elevators at Week 37 are 45% lower than the same period last year and 29% lower than the 3-year average.

6. Vessels: (Page 5)

- Vancouver vessel lineup for Week 38 2021-22 increased to 8 vessels (The current one-year average at Vancouver is 16 vessels). Of the 8, 6 were at berth, 2 were anchored at English Bay, 0 were anchored at Burrard Inlet, and 0 were anchored at Vancouver Island.
- Prince Rupert vessel lineup for Week 38 2021-22 remained at 0 vessels (The current one-year average at Prince Rupert is 1 vessel).
- Vessels cleared from Vancouver was 2, and from Prince Rupert was 1 in Week 38 2021-22.

1. Stocks in Store

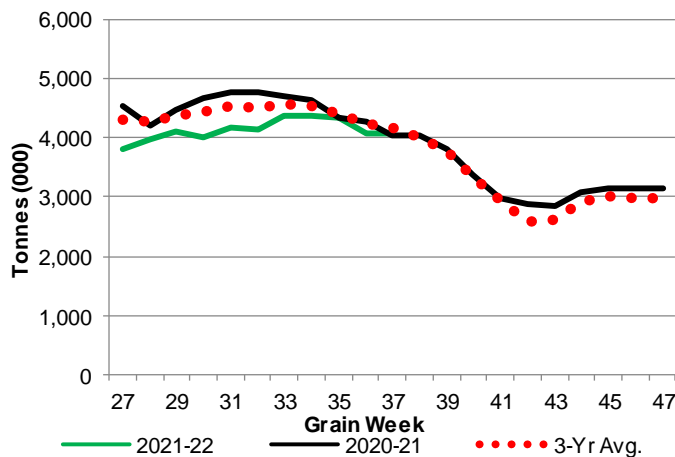
1-A1 Country Stocks ('000 tonnes) – Week 37

	MB	SK	AB	BC	Total
2021-22	673.9	2,102.2	1,271.6	22.8	4,070.5
2020-21	723.9	2,060.0	1,240.3	28.0	4,052.2
3-Yr Avg.	721.3	2,133.3	1,285.7	24.8	4,165.2
Var % - LY	-7%	2%	3%	-19%	0%
Var % 3-Yr Avg.	-7%	-1%	-1%	-8%	-2%
Storage Capacity	1,655.2	4,231.6	2,527.1	39.7	8,453.6
Estimated Working Capacity	1,075.9	2,750.6	1,642.6	25.8	5,494.9
21-22 % of Wkg Cap	63%	76%	77%	88%	74%

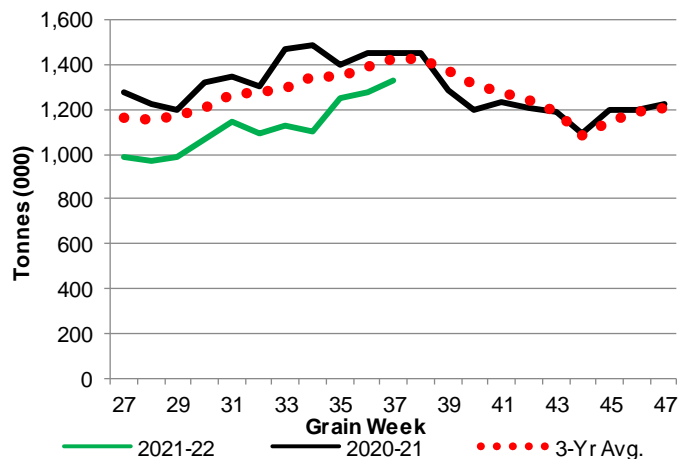
1-B1 Terminal Stocks ('000 tonnes) – Week 37

	VC	PR	West Coast	CH	TB	Total
2021-22	571.9	127.7	699.6	0.7	629.0	1,329.3
2020-21	718.2	116.9	835.1	0.7	616.7	1,452.5
3-Yr Avg.	673.1	118.3	791.4	0.7	635.2	1,427.3
Var % - LY	-20%	9%	-16%	0%	2%	-8%
Var % 3-Yr Avg.	-15%	8%	-12%	0%	-1%	-7%
Storage Capacity	1,275.5	209.5	1,485.0	140.0	1,127.5	2,752.5
Estimated Working Capacity	892.9	146.7	1,039.6	98.0	789.2	1,926.8
21-22 % of Wkg Cap	64%	87%	67%	1%	80%	69%

1-A2 Weekly Country Stocks in Store



1-B2 Weekly Terminal Stocks in Store

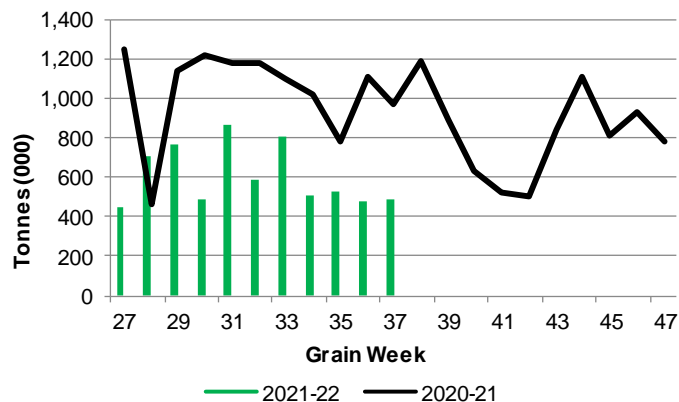


2. Country Deliveries

2-A Country Deliveries ('000 tonnes) – Week 37

	MB	SK	AB	BC	Total
2021-22	81.4	233.5	173.6	2.6	491.1
2020-21	140.6	506.8	321.9	3.1	972.4
4 Wk Avg	91.1	224.3	178.9	4.1	498.3
Var % to Last Year	-42%	-54%	-46%	-16%	-50%
Var % To 4 Wk Avg	-11%	4%	-3%	-37%	-1%

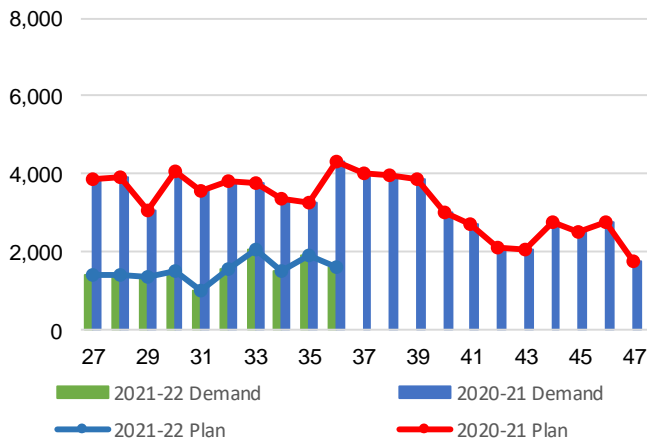
2-B 2019-20 Weekly Country Deliveries



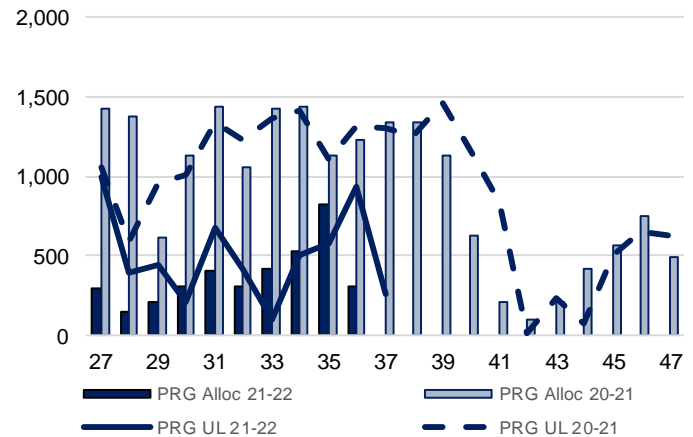
3. Railcar Supply

Special Note to readers: CP discontinued publishing weekly railcar spotting plans in Week 12 2014-15 (GCRS Service Report). CN continues to publish a weekly plan and the graphs below reflect CN's plan to Week 36 2021-22. Note that the orders accepted do not necessarily reflect shipper demand, but rather the railways' acceptance of shippers' car orders. When both railways provide the order fulfillment data requested with the expansion of the GMP mandate, which was announced on February 3, 2014, a complete set of metrics will be presented.

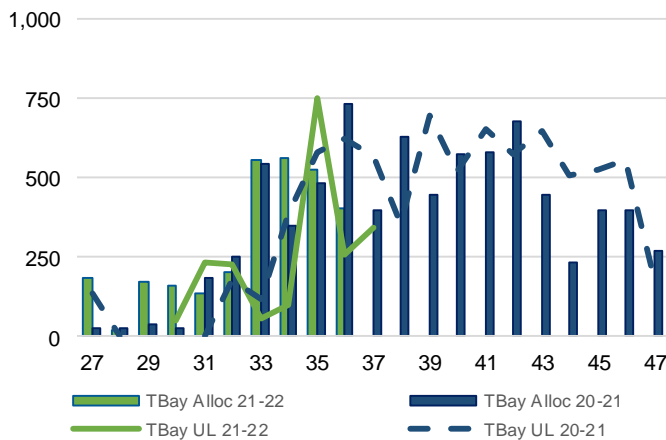
3-A: Canadian National Planned Car Allocation vs. Demand (cars) To Week 36 2021-22



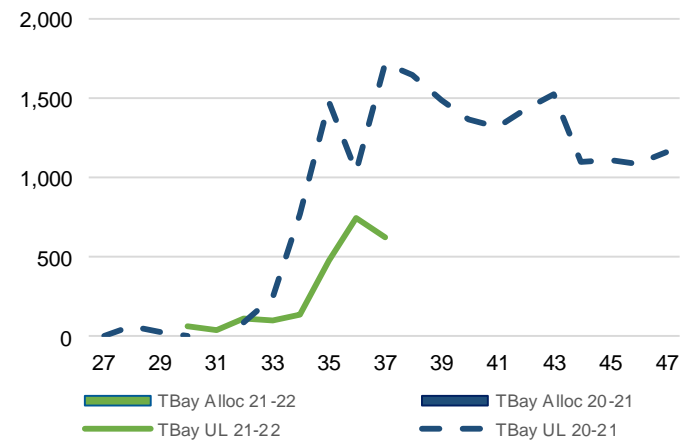
3-B3: Canadian National Planned Car Allocation to Western Ports Vs. Corridor Unloads at Port (cars) – Prince Rupert



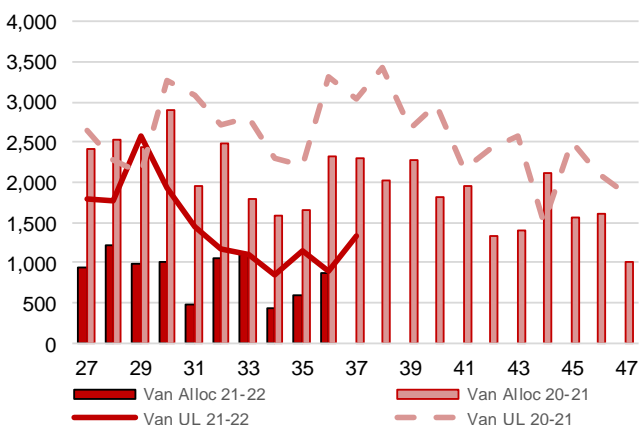
3-B1: Canadian National Planned Car Allocation to Western Ports Vs. Corridor Unloads at Port (cars) – Thunder Bay



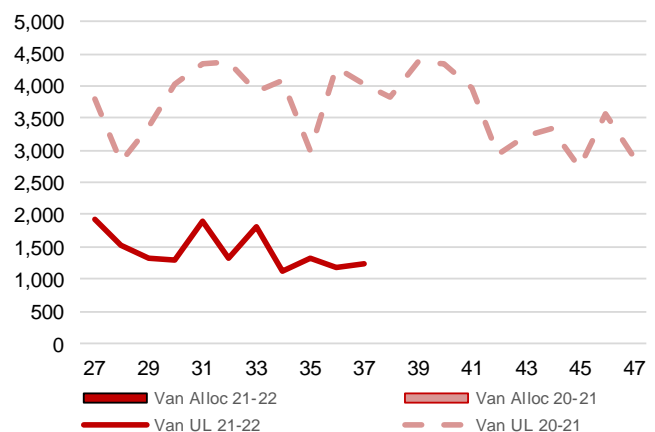
3-C1: Canadian Pacific Planned Car Allocation to Western Ports vs. Corridor Unloads at Port (cars) – Thunder Bay



3-B2: Canadian National Planned Car Allocation to Western Ports Vs. Corridor Unloads at Port (cars) – Vancouver



3-C2: Canadian Pacific Planned Car Allocation to Western Ports vs. Corridor Unloads at Port (cars) – Vancouver



4. Port Performance

4-A Weekly Unloads by Port (Cars) – This Year for Week 37, 4-Week Moving Average and Variances

	Vancouver	Prince Rupert	West Coast	Thunder Bay	Churchill	Total
2021-22	2,550	258	2,808	972	-	3,780
2020-21	7,062	1,308	8,370	2,293	-	10,663
4-Wk Avg.	2,271	570	2,841	862	-	3,703
Var % to Last Year	-64%	-80%	-66%	-58%	n/a	-65%
Var % to 4-Wk Avg.	12%	-55%	-1%	13%	n/a	2%

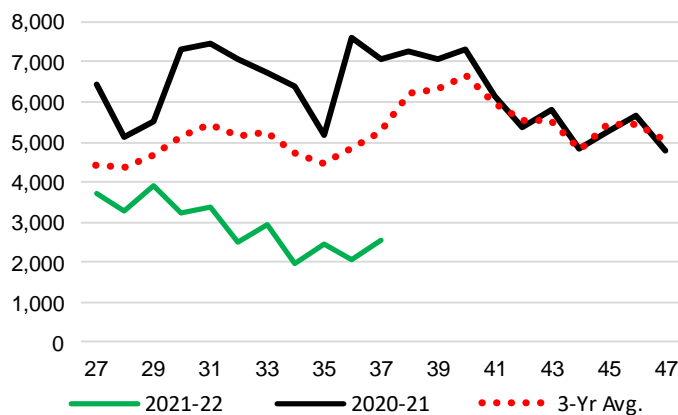
4-B Terminal Unloads by Port – This Year-to-Date as at Week 37 and Variances

YTD Unloads (cars)	Vancouver	Prince Rupert	West Coast	Thunder Bay	Churchill	Total
2021-22	132,941	19,302	152,243	42,312	-	194,555
2020-21	240,713	43,690	284,403	61,039	1,063	346,505
3-Yr Avg	183,766	34,283	218,049	53,952	846	272,847
Var % to Last Year	-45%	-56%	-46%	-31%	-100%	-44%
Var % to 3-Yr Avg	-28%	-44%	-30%	-22%	-100%	-29%

YTD Unloads ('000 tonnes)	Vancouver	Prince Rupert	West Coast	Thunder Bay	Churchill	Total
2021-22	12,525.2	1,793.8	14,319.0	4,020.1	-	18,339.1
2020-21	22,467.8	4,087.1	26,554.9	5,729.3	95.5	32,379.7
3-Yr Avg.	17,097.6	3,184.4	20,282.0	5,055.7	76.4	25,414.1
Var % to Last Year	-44%	-56%	-46%	-30%	-100%	-43%
Var % to 3-Yr Avg.	-27%	-44%	-29%	-20%	-100%	-28%

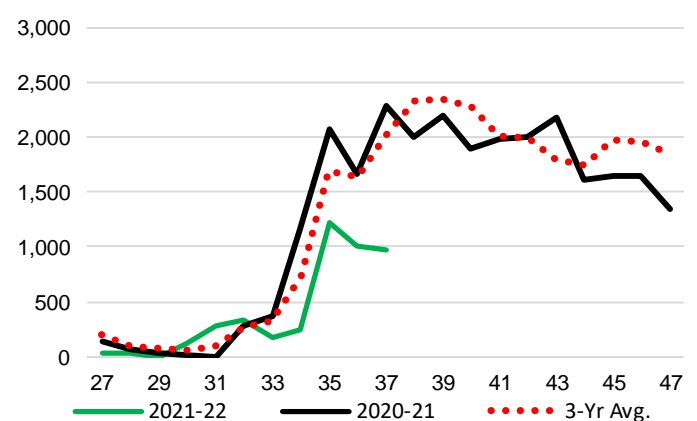
4-C Vancouver Unloads (cars)

(This Year vs. Last Year and the 3-Year Average)



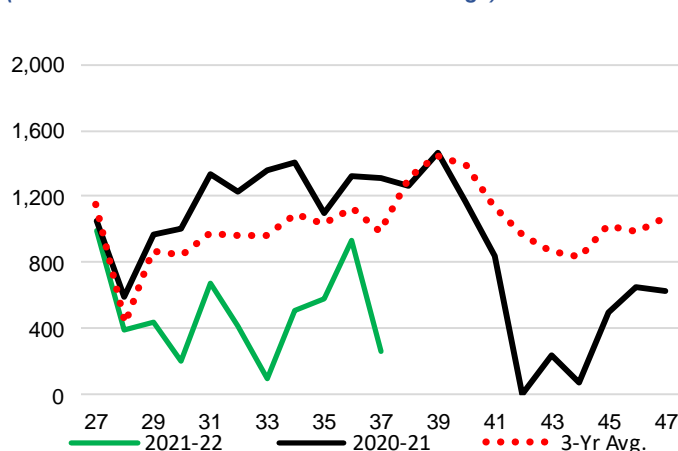
4-E Thunder Bay Unloads (cars)

(This Year vs. Last Year and the 3-Year Average)

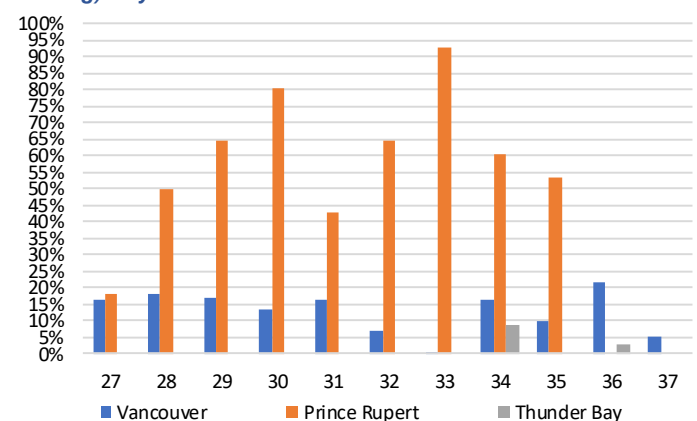


4-D Prince Rupert Unloads (cars)

(This Year vs. Last Year and the 3-Year Average)



4-F Weekly Out-of-Car Time (% of hours out-of-cars / total hours working) – by Port to Week 37



Out-of-car time is measured weekly and uses data from terminal elevators on the total number of hours the facilities are open & staffed (including overtime hours) and the corresponding number of hours that terminals have no railcars available to unload. The measure is expressed as a percentage (hours without cars to the total number of hours working).

4-G Monthly Unloads (cars) – This year vs. Last Year and the 3-Year Average to Week 35 2021-22

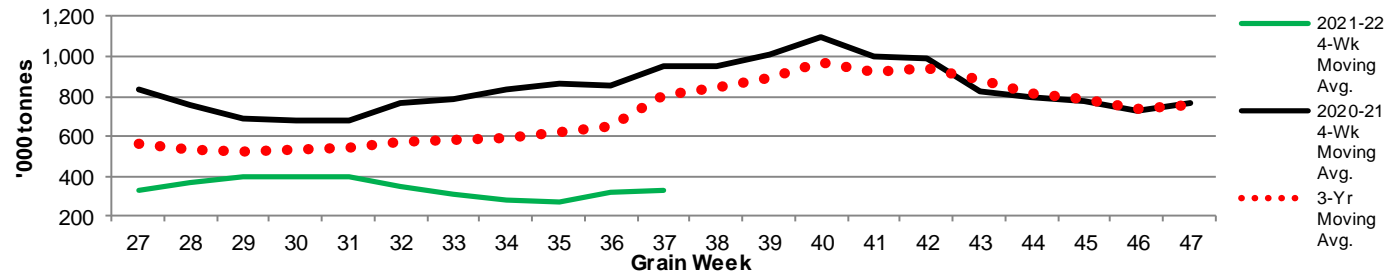
Months	Aug	Sep	Oct	Nov	Dec	Jan	Feb	Mar	Apr	May	Jun	Jul
Weeks	1-4	5-9	10-13	14-17	18-22	23-26	27-30	31-35	36-39	40-43	44-48	49-52
2021-22	17,876	36,841	33,987	23,015	24,174	16,770	16,356	17,723	-	-	-	-
2020-21	35,688	50,352	44,342	42,742	45,462	35,328	28,211	43,126	42,495	34,905	33,574	21,334
3-Yr Avg.	27,793	41,067	38,202	33,316	36,198	24,930	22,363	33,100	38,685	36,117	39,664	28,970
Var % to Last Year	-50%	-27%	-23%	-46%	-47%	-53%	-42%	-59%				
Var % to 3-Yr Avg.	-36%	-10%	-11%	-31%	-33%	-33%	-27%	-46%				

5. Shipments

5-A Shipments from Port Terminals ('000 tonnes) – This Year-to-Date as of Week 37 and Variance to Last Year-to-Date

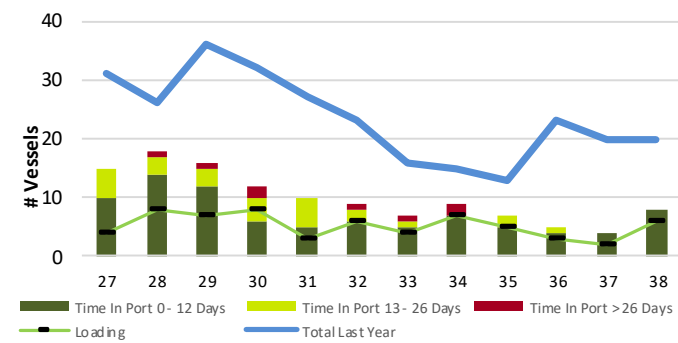
	Vancouver	Prince Rupert	West Coast	Thunder Bay	Churchill	Total
2021-22	12,415.5	1,702.3	14,117.8	3,826.5	-	17,944.3
2020-21	23,108.9	4,085.0	27,193.9	5,362.2	95.7	32,651.8
3-Yr Avg.	17,394.8	3,122.1	20,516.9	4,752.6	77.7	25,347.2
Var % to Last Year	-46%	-58%	-48%	-29%	-100%	-45%
Var % to 3-Yr Avg.	-29%	-45%	-31%	-19%	-100%	-29%

5-B Weekly Shipments ('000 tonnes) from Port Terminals - This year 4-Week moving avg. vs. last year 4-Week moving avg. and the 3-Year moving avg.

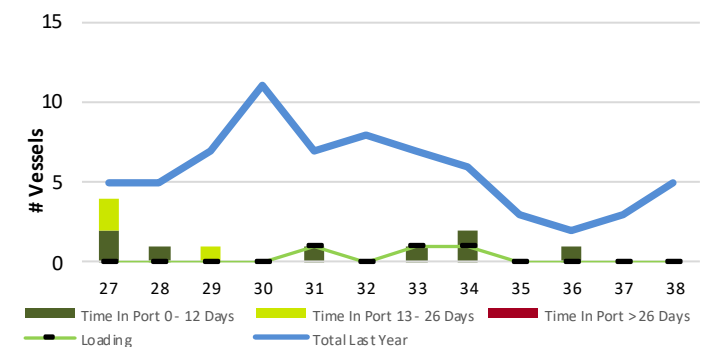


6. Vessels

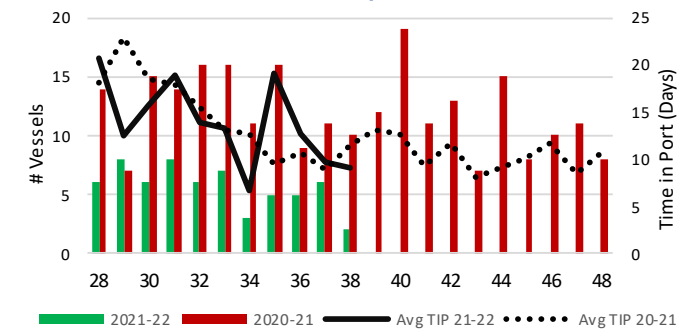
6-A Vessel Lineup at Vancouver as of Week 38 2021-22



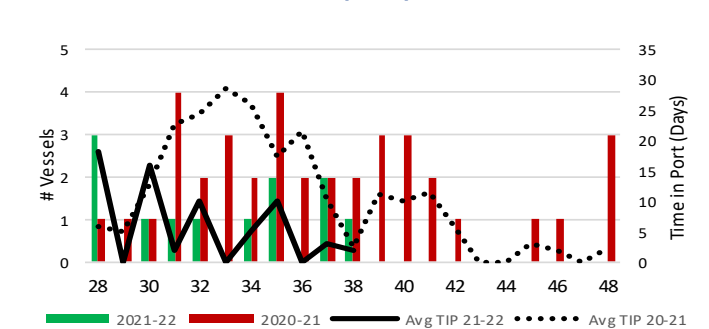
6-C Vessel Lineup at Prince Rupert as of Week 38 2021-22



6-B Vessels Cleared at Vancouver up to Week 38 2021-22



6-D Vessels Cleared at Prince Rupert up to Week 38 2021-22



Note: The 'Time in Port' measure for 6-A and 6-C is calculated as how long each vessel in the lineup has been in port as at Sunday 23:59 of that grain week. The 'Avg Time in Port (TIP)' measure for 6-B and 6-D is the average number of days that all vessels which cleared that week were in port. These measures use vessel data provided by the BC Chamber of Shipping and Pacific Pilotage Authority.