

Grain Monitoring Program

Weekly Performance Update

May 10, 2022

For Grain Week 39 (2021-22 CY)

Summary

	Week 39	Week 38	Var. from Last Year
--	---------	---------	---------------------

1. Stocks in Store ('000 tonnes)

Country Elevators	↓ 3,823.9	3,835.0	1%
% of Working Capacity	70%	70%	
Terminal Elevators	↓ 1,386.8	1,413.8	8%
% of Working Capacity	72%	73%	

2. Country Deliveries ('000 tonnes)

Country Deliveries	↑ 491.2	464.0	-45%
--------------------	---------	-------	------

3. Railcar Supply to Western Ports (Cars)

CN Allocation Plan	↓ 1,560	n/a	-59%
CN Unloads	↓ 1,447	2,342	-70%
CP Allocation Plan	n/a	n/a	n/a
CP Unloads	↑ 2,334	1,852	-60%

4. Port Performance (Cars)

Total Weekly Unloads	↓ 3,781	4,194	-65%
4-Week Rolling Average	↓ 3,996	4,122	n/a
Var. to 4-Week Rolling Average	↓ -5%	2%	n/a
YTD Unloads	↑ 202,727	198,946	-45%
Weekly Out-of-Car Time	↑ 8.1%	4.2%	-41.0%

5. Terminal Shipments Year-to-Date ('000 tonnes)

Vancouver	↑ 12,743.8	12,587.9	-48%
Prince Rupert	↑ 1,824.1	1,769.9	-58%
Churchill	— 0.0	0.0	-100%
Thunder Bay	↑ 4,073.7	3,955.9	-30%
Total Western Canada	18,641.6	18,313.7	-46%

6. Vessels as at May 8, 2022

		Week 40	Week 39	Var. from Last Year
Vancouver	Vessel Lineup in port	↓ 9	11	-47%
	Vessels Cleared	↑ 6	2	-68%
	Vessels Arrived	↓ 4	5	-56%
Pr. Rupert	Vessel Lineup in port	↑ 1	0	-50%
	Vessels Cleared	— 1	1	-67%
	Vessels Arrived	↑ 2	1	100%

Vessels Inbound May 09, 2022 to May 15, 2022 (Week 41)

Vancouver	7
Prince Rupert	1

1. Stocks in Store: (Page 2)

- Country stocks decreased to 3.82 MMT in Week 39 utilizing 70% of the system's working capacity. Space in primary elevators is good.
- Total western port terminal stocks decreased to 1.39 MMT in Week 39, utilizing 72% of the working capacity.

2. Country Deliveries: (Page 2)

- Deliveries to primary elevators were 0.49 MMT in Week 39.
- Axle Weight Restrictions (road bans) are in effect across the prairies.

3. Railcar Supply: (Page 3)

- Railcar allocation plans are supplied by CN to Week 40 2021-22 (see page 3 for details).

4. Port Performance: (Page 4)

- Total western port unloads were 5% lower than the 4-week moving average and 65% lower than Week 39 last year.
- West Coast unloads were 2,980 cars (Vancouver 2,533 and Prince Rupert 447), 2% lower than the 4-week moving average and 65% lower than Week 39 last year.
- Thunder Bay unloads were 801 cars, 17% lower than the 4-week moving average and 64% lower than Week 39 last year.
- Year-to-date total western port unloads are 45% lower than the same period last year. The corresponding tonnage is 44% lower than the same period last year.
- The total average terminal out-of-car time (OCT) increased to 8.1% from 4.2% in the previous week. The OCT for Week 39 was 1.6% at Vancouver, 62.5% at Prince Rupert, and 5.5% at Thunder Bay.

5. Shipments: (Page 5)

- Year-to-date Western Canadian shipments from port terminal elevators at Week 39 are 46% lower than the same period last year and 31% lower than the 3-year average.

6. Vessels: (Page 5)

- Vancouver vessel lineup for Week 40 2021-22 decreased to 9 vessels (The current one-year average at Vancouver is 15 vessels). Of the 9, 6 were at berth, 2 were anchored at English Bay, 1 was anchored at Burrard Inlet, and 0 were anchored at Vancouver Island.
- Prince Rupert vessel lineup for Week 40 2021-22 increased to 1 vessel (The current one-year average at Prince Rupert is 1 vessel).
- Vessels cleared from Vancouver was 6, and from Prince Rupert was 1 in Week 40 2021-22.

1. Stocks in Store

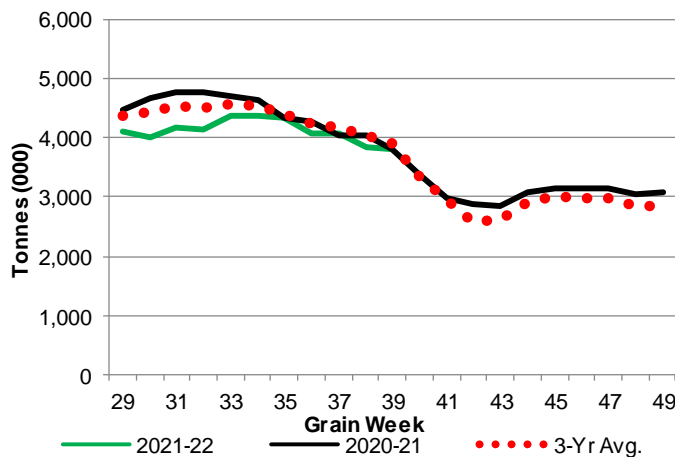
1-A1 Country Stocks ('000 tonnes) – Week 39

	MB	SK	AB	BC	Total
2021-22	597.0	1,978.7	1,228.5	19.7	3,823.9
2020-21	701.2	1,973.5	1,098.7	26.1	3,799.5
3-Yr Avg.	670.5	2,022.6	1,182.5	23.5	3,899.1
Var % - LY	-15%	0%	12%	-25%	1%
Var % 3-Yr Avg.	-11%	-2%	4%	-16%	-2%
Storage Capacity	1,655.2	4,231.6	2,527.1	39.7	8,453.6
Estimated Working Capacity	1,075.9	2,750.6	1,642.6	25.8	5,494.9
21-22 % of Wkg Cap	55%	72%	75%	76%	70%

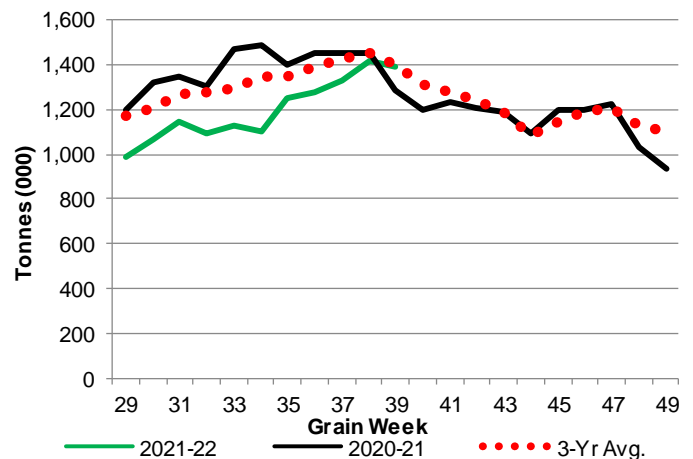
1-B1 Terminal Stocks ('000 tonnes) – Week 39

	VC	PR	West Coast	CH	TB	Total
2021-22	646.1	136.1	782.2	0.7	603.9	1,386.8
2020-21	677	77.0	754.0	0.7	532.5	1,287.2
3-Yr Avg.	689	104.4	793.4	0.7	603.0	1,397.1
Var % - LY	-5%	77%	4%	0%	13%	8%
Var % 3-Yr Avg.	-6%	30%	-1%	0%	0%	-1%
Storage Capacity	1,275.5	209.5	1,485.0	140.0	1,127.5	2,752.5
Estimated Working Capacity	892.9	146.7	1,039.6	98.0	789.2	1,926.8
21-22 % of Wkg Cap	72%	93%	75%	1%	77%	72%

1-A2 Weekly Country Stocks in Store



1-B2 Weekly Terminal Stocks in Store

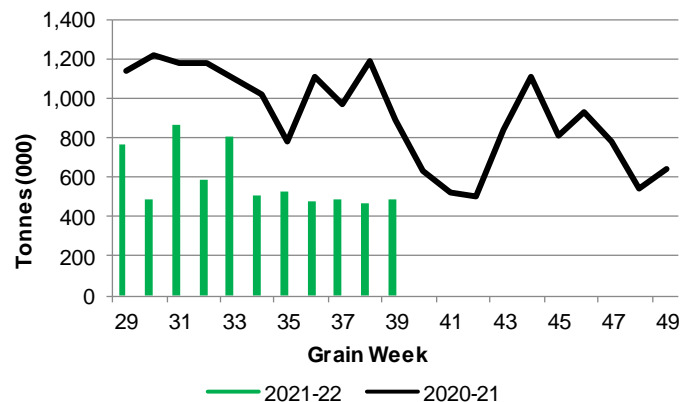


2. Country Deliveries

2-A Country Deliveries ('000 tonnes) – Week 39

	MB	SK	AB	BC	Total
2021-22	90.3	253.8	144.4	2.7	491.2
2020-21	159.0	468.7	261.4	0.8	889.9
4 Wk Avg	89.5	236.0	152.1	2.9	480.6
Var % to Last Year	-43%	-46%	-45%	238%	-45%
Var % To 4 Wk Avg	1%	8%	-5%	-7%	2%

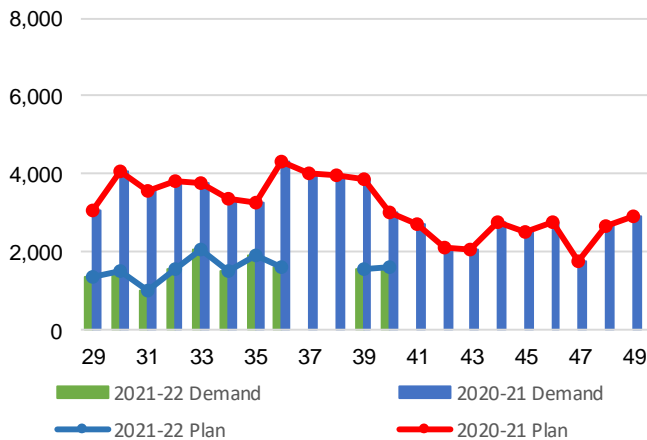
2-B 2019-20 Weekly Country Deliveries



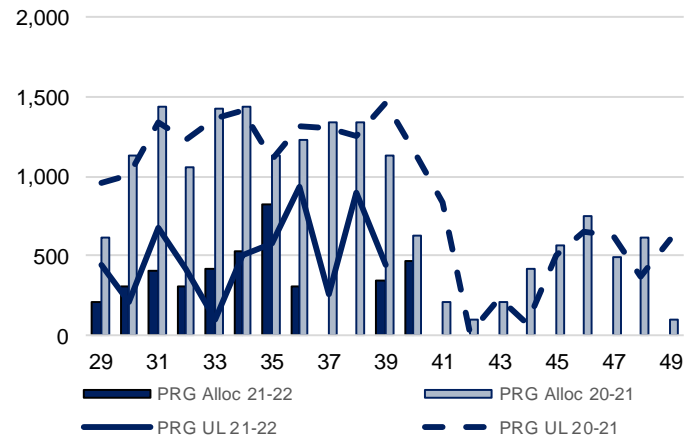
3. Railcar Supply

Special Note to readers: CP discontinued publishing weekly railcar spotting plans in Week 12 2014-15 (GCRS Service Report). CN continues to publish a weekly plan and the graphs below reflect CN's plan to Week 40 2021-22. Note that the orders accepted do not necessarily reflect shipper demand, but rather the railways' acceptance of shippers' car orders. When both railways provide the order fulfillment data requested with the expansion of the GMP mandate, which was announced on February 3, 2014, a complete set of metrics will be presented.

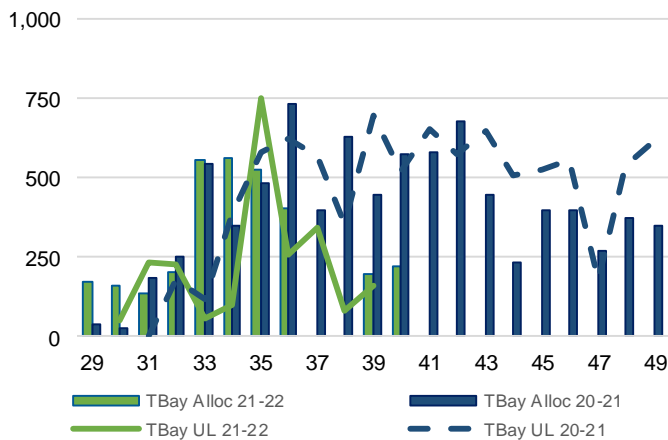
3-A: Canadian National Planned Car Allocation vs. Demand (cars) To Week 40 2021-22



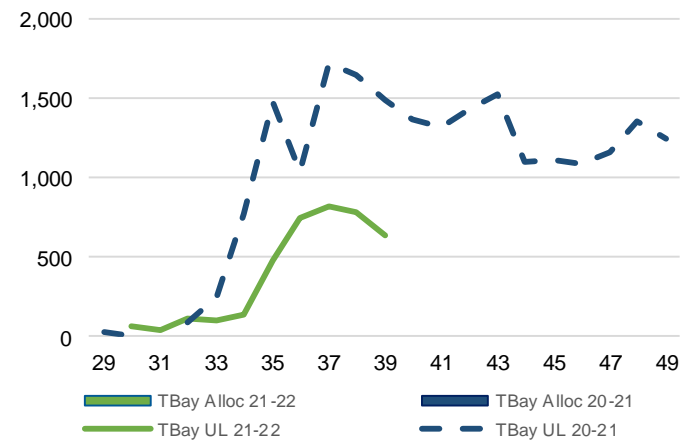
3-B3: Canadian National Planned Car Allocation to Western Ports Vs. Corridor Unloads at Port (cars) – Prince Rupert



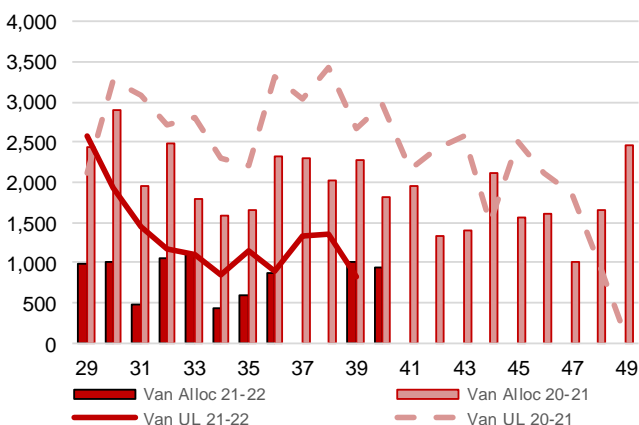
3-B1: Canadian National Planned Car Allocation to Western Ports Vs. Corridor Unloads at Port (cars) – Thunder Bay



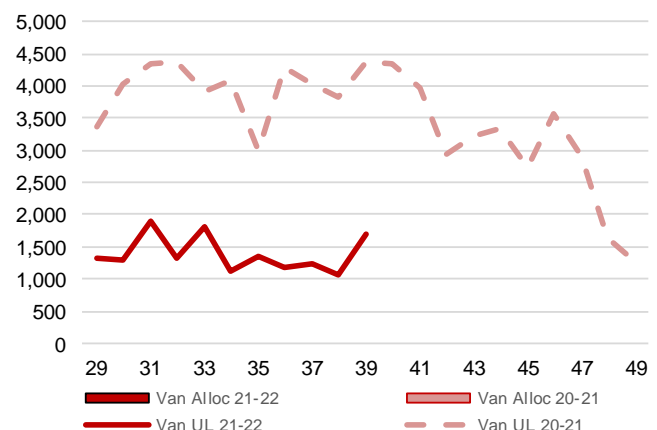
3-C1: Canadian Pacific Planned Car Allocation to Western Ports vs. Corridor Unloads at Port (cars) – Thunder Bay



3-B2: Canadian National Planned Car Allocation to Western Ports Vs. Corridor Unloads at Port (cars) – Vancouver



3-C2: Canadian Pacific Planned Car Allocation to Western Ports vs. Corridor Unloads at Port (cars) – Vancouver



4. Port Performance

4-A Weekly Unloads by Port (Cars) – This Year for Week 39, 4-Week Moving Average and Variances

	Vancouver	Prince Rupert	West Coast	Thunder Bay	Churchill	Total
2021-22	2,533	447	2,980	801	-	3,781
2020-21	7,055	1,468	8,523	2,198	-	10,721
4-Wk Avg.	2,400	634	3,034	962	-	3,996
Var % to Last Year	-64%	-70%	-65%	-64%	n/a	-65%
Var % to 4-Wk Avg.	6%	-29%	-2%	-17%	n/a	-5%

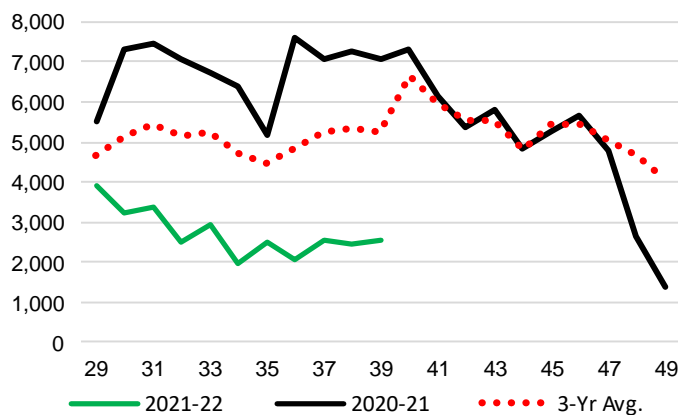
4-B Terminal Unloads by Port – This Year-to-Date as at Week 39 and Variances

YTD Unloads (cars)	Vancouver	Prince Rupert	West Coast	Thunder Bay	Churchill	Total
2021-22	137,907	20,644	158,551	44,176	-	202,727
2020-21	255,027	46,417	301,444	65,239	1,063	367,746
3-Yr Avg	194,398	36,553	230,951	57,896	846	289,693
Var % to Last Year	-46%	-56%	-47%	-32%	-100%	-45%
Var % to 3-Yr Avg	-29%	-44%	-31%	-24%	-100%	-30%

YTD Unloads ('000 tonnes)	Vancouver	Prince Rupert	West Coast	Thunder Bay	Churchill	Total
2021-22	13,000.1	1,924.0	14,924.1	4,203.6	-	19,127.7
2020-21	23,807.0	4,347.0	28,154.0	6,138.5	95.5	34,388.0
3-Yr Avg.	18,093.9	3,398.7	21,492.7	5,436.2	76.4	27,005.3
Var % to Last Year	-45%	-56%	-47%	-32%	-100%	-44%
Var % to 3-Yr Avg.	-28%	-43%	-31%	-23%	-100%	-29%

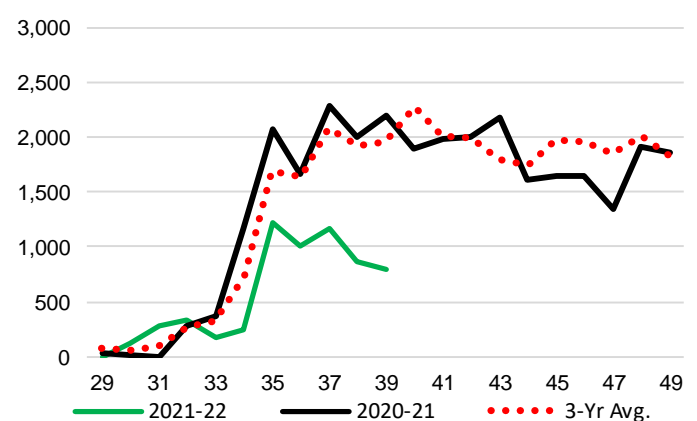
4-C Vancouver Unloads (cars)

(This Year vs. Last Year and the 3-Year Average)



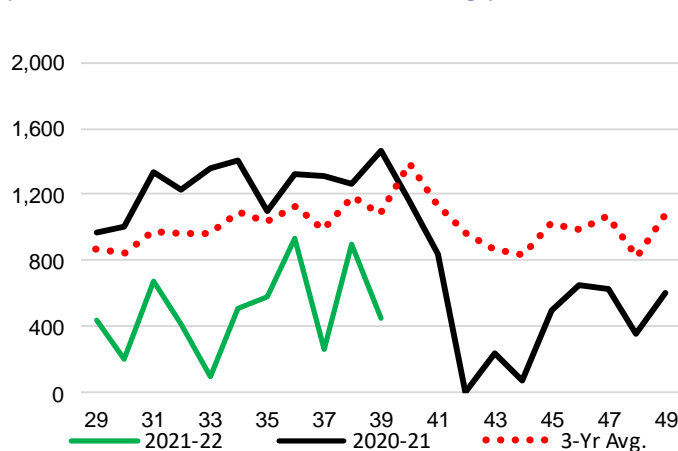
4-E Thunder Bay Unloads (cars)

(This Year vs. Last Year and the 3-Year Average)

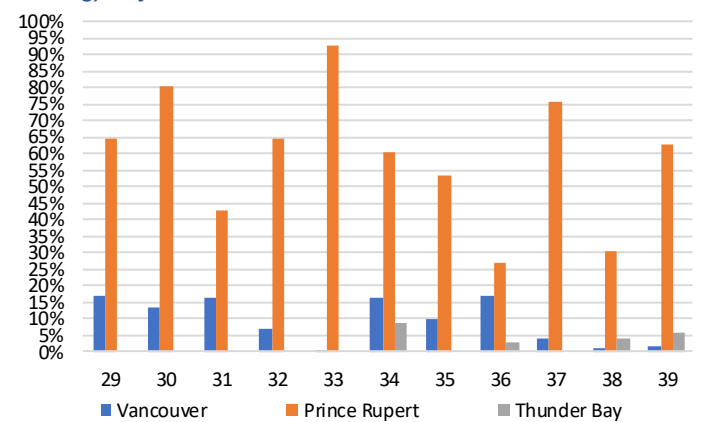


4-D Prince Rupert Unloads (cars)

(This Year vs. Last Year and the 3-Year Average)



4-F Weekly Out-of-Car Time (% of hours out-of-cars / total hours working) – by Port to Week 39



Out-of-car time is measured weekly and uses data from terminal elevators on the total number of hours the facilities are open & staffed (including overtime hours) and the corresponding number of hours that terminals have no railcars available to unload. The measure is expressed as a percentage (hours without cars to the total number of hours working).

4-G Monthly Unloads (cars) – This year vs. Last Year and the 3-Year Average to Week 39 2021-22

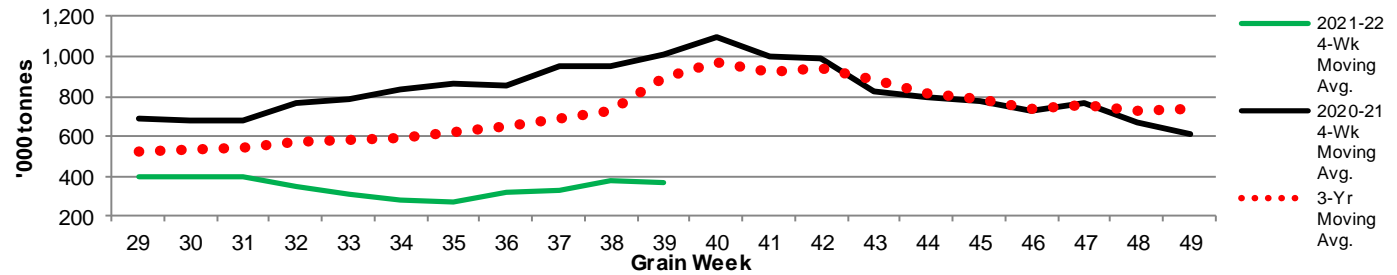
Months	Aug	Sep	Oct	Nov	Dec	Jan	Feb	Mar	Apr	May	Jun	Jul
Weeks	1-4	5-9	10-13	14-17	18-22	23-26	27-30	31-35	36-39	40-43	44-48	49-52
2021-22	17,876	36,841	33,987	23,015	24,174	16,770	16,356	17,725	15,983	-	-	-
2020-21	35,688	50,352	44,342	42,742	45,462	35,328	28,211	43,126	42,495	34,905	33,574	21,334
3-Yr Avg.	27,793	41,067	38,202	33,316	36,198	24,930	22,363	33,101	32,724	36,117	39,664	28,970
Var % to Last Year	-50%	-27%	-23%	-46%	-47%	-53%	-42%	-59%	-62%			
Var % to 3-Yr Avg.	-36%	-10%	-11%	-31%	-33%	-33%	-27%	-46%	-51%			

5. Shipments

5-A Shipments from Port Terminals ('000 tonnes) – This Year-to-Date as at Week 39 and Variance to Last Year-to-Date

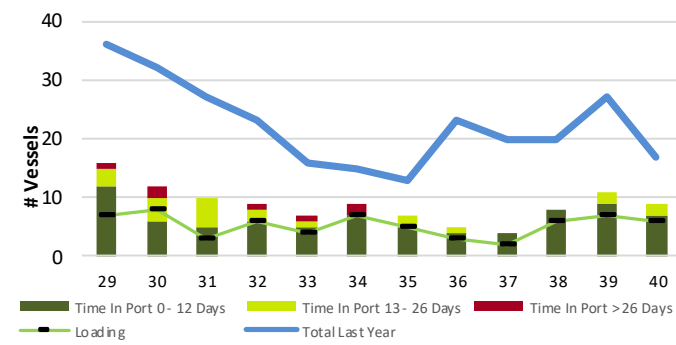
	Vancouver	Prince Rupert	West Coast	Thunder Bay	Churchill	Total
2021-22	12,743.8	1,824.1	14,567.9	4,073.7	-	18,641.6
2020-21	24,507.8	4,324.2	28,832.0	5,848.3	95.7	34,776.0
3-Yr Avg.	18,306.6	3,328.1	21,634.6	5,205.6	77.7	26,917.9
Var % to Last Year	-48%	-58%	-49%	-30%	-100%	-46%
Var % to 3-Yr Avg.	-30%	-45%	-33%	-22%	-100%	-31%

5-B Weekly Shipments ('000 tonnes) from Port Terminals - This year 4-Week moving avg. vs. last year 4-Week moving avg. and the 3-Year moving avg.

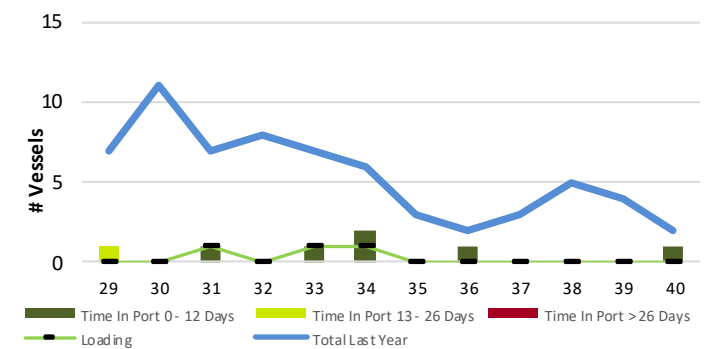


6. Vessels

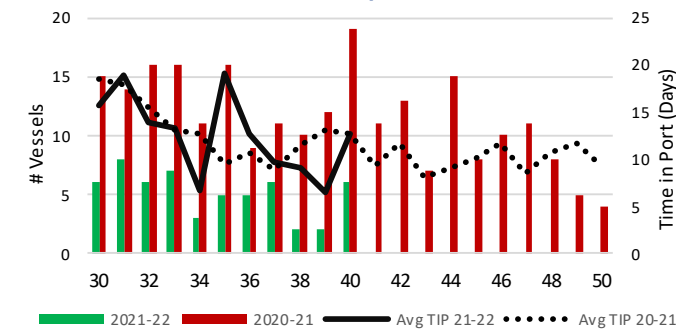
6-A Vessel Lineup at Vancouver as of Week 40 2021-22



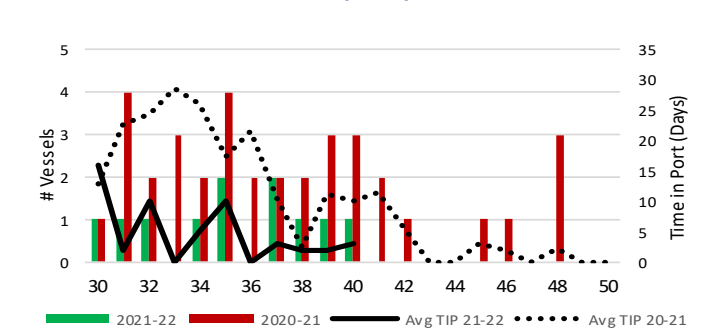
6-C Vessel Lineup at Prince Rupert as of Week 40 2021-22



6-B Vessels Cleared at Vancouver up to Week 40 2021-22



6-D Vessels Cleared at Prince Rupert up to Week 40 2021-22



Note: The 'Time in Port' measure for 6-A and 6-C is calculated as how long each vessel in the lineup has been in port as at Sunday 23:59 of that grain week. The 'Avg Time in Port (TIP)' measure for 6-B and 6-D is the average number of days that all vessels which cleared that week were in port. These measures use vessel data provided by the BC Chamber of Shipping and Pacific Pilotage Authority.