

Grain Monitoring Program

Weekly Performance Update

August 2, 2022

For Grain Week 51 (2021-22 CY)

Summary

	Week 51	Week 50	Var. from Last Year	
1. Stocks in Store ('000 tonnes)				
Country Elevators	↓ 2,118.9	2,427.6	-22%	
% of Working Capacity	38%	44%		
Terminal Elevators	↓ 1,027.1	1,119.0	10%	
% of Working Capacity	53%	58%		
2. Country Deliveries ('000 tonnes)				
Country Deliveries	↓ 381.4	492.9	-14%	
3. Railcar Supply to Western Ports (Cars)				
CN Allocation Plan	↓ 2,051	2,736	21%	
CN Unloads	↓ 2,219	2,313	-27%	
CP Allocation Plan	n/a	n/a	n/a	
CP Unloads	↑ 1,547	1,337	-53%	
4. Port Performance (Cars)				
Total Weekly Unloads	↑ 3,766	3,650	-40%	
4-Week Rolling Average	↑ 3,804	3,685	n/a	
Var. to 4-Week Rolling Average	↓ -1%	-1%	n/a	
YTD Unloads	↑ 246,253	242,487	-45%	
Weekly Out-of-Car Time	↓ 9.4%	13.2%	-41.2%	
5. Terminal Shipments Year-to-Date ('000 tonnes)				
Vancouver	↑ 15,272.3	14,834.3	-50%	
Prince Rupert	↑ 2,263.0	2,186.9	-54%	
Churchill	— 0.0	0.0	-100%	
Thunder Bay	↑ 5,560.6	5,488.1	-29%	
Total Western Canada	23,095.9	22,509.3	-47%	
6. Vessels as at Jul 31, 2022				
	Week 52	Week 51	Var. from Last Year	
Vancouver	Vessel Lineup in port	↑ 8	7	-33%
	Vessels Cleared	↑ 8	7	-11%
	Vessels Arrived	↑ 9	6	29%
Pr. Rupert	Vessel Lineup in port	↓ 1	2	n/a
	Vessels Cleared	— 1	1	0%
	Vessels Arrived	↓ 0	1	n/a
Vessels Inbound Aug 01, 2022 to Aug 07, 2022 (Week 01)				
Vancouver	7			
Prince Rupert	0			

1. Stocks in Store: (Page 2)

- Country stocks decreased to 2.12 MMT in Week 51 utilizing 38% of the system's working capacity. Space in primary elevators is good.
- Total western port terminal stocks decreased to 1.03 MMT in Week 51, utilizing 53% of the working capacity.

2. Country Deliveries: (Page 2)

- Deliveries to primary elevators were 0.38 MMT in Week 51.

3. Railcar Supply: (Page 3)

- Railcar allocation plans are supplied by CN to Week 1 2022-23 (see page 3 for details).

4. Port Performance: (Page 4)

- Total western port unloads were 1% lower than the 4-week moving average and 40% lower than Week 51 last year.
- West Coast unloads were 3,036 cars (Vancouver 2,417 and Prince Rupert 619), 7% higher than the 4-week moving average and 43% lower than Week 51 last year.
- Thunder Bay unloads were 730 cars, 25% lower than the 4-week moving average and 29% lower than Week 51 last year.
- Year-to-date total western port unloads are 45% lower than the same period last year. The corresponding tonnage is 45% lower than the same period last year.
- The total average terminal out-of-car time (OCT) decreased to 9.4% from 13.2% in the previous week. The OCT for Week 51 was 8.0% at Vancouver and 13.3% at Thunder Bay. At the time of publishing, Prince Rupert had not yet reported Week 51 OCT.

5. Shipments: (Page 5)

- Year-to-date Western Canadian shipments from port terminal elevators at Week 51 are 47% lower than the same period last year and 33% lower than the 3-year average.

6. Vessels: (Page 5)

- Vancouver vessel lineup for Week 52 2021-22 increased to 8 vessels (The current one-year average at Vancouver is 14 vessels). Of the 8, 4 were at berth, 3 were anchored at English Bay, 0 were anchored at Burrard Inlet, and 1 was anchored at Vancouver Island.
- Prince Rupert vessel lineup for Week 52 2021-22 decreased to 1 vessel (The current one-year average at Prince Rupert is 1 vessel).
- Vessels cleared from Vancouver was 8, and from Prince Rupert was 1 in Week 52 2021-22.

1. Stocks in Store

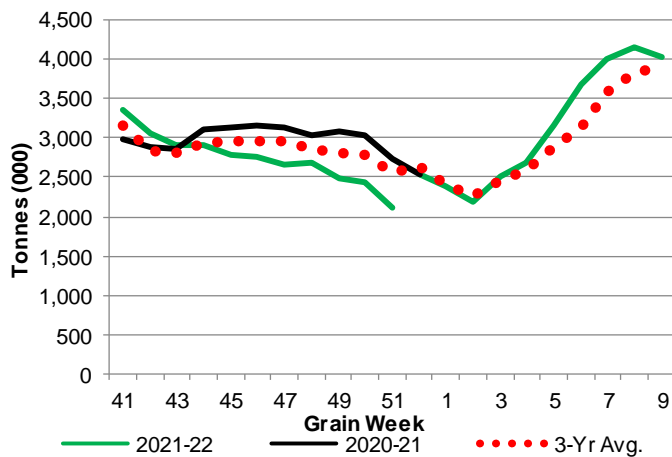
1-A1 Country Stocks ('000 tonnes) – Week 51

	MB	SK	AB	BC	Total
2021-22	380.2	1,145.5	580.8	12.4	2,118.9
2020-21	433.5	1,558.2	730.1	8.4	2,730.2
3-Yr Avg.	466.8	1,399.9	691.1	12.6	2,570.5
Var % - LY	-12%	-26%	-20%	48%	-22%
Var % 3-Yr Avg.	-19%	-18%	-16%	-2%	-18%
Storage Capacity	1,691.6	4,230.7	2,527.1	41.2	8,490.6
Estimated Working Capacity	1,099.5	2,750.0	1,642.6	26.8	5,518.9
21-22 % of Wkg Cap	35%	42%	35%	46%	38%

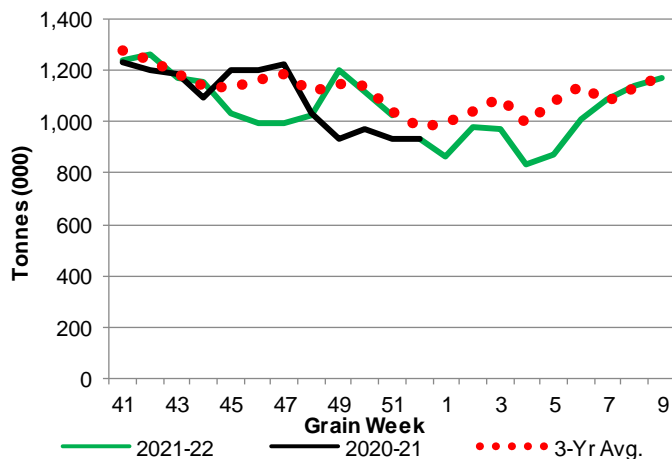
1-B1 Terminal Stocks ('000 tonnes) – Week 51

	VC	PR	West Coast	CH	TB	Total
2021-22	596.3	98.8	695.1	0.7	331.3	1,027.1
2020-21	403.4	38.7	442.1	0.7	488.8	931.6
3-Yr Avg.	541	69.7	610.7	0.7	432.5	1,043.9
Var % - LY	48%	155%	57%	0%	-32%	10%
Var % 3-Yr Avg.	10%	42%	14%	0%	-23%	-2%
Storage Capacity	1,275.5	209.5	1,485.0	140.0	1,127.5	2,752.5
Estimated Working Capacity	892.9	146.7	1,039.6	98.0	789.2	1,926.8
21-22 % of Wkg Cap	67%	67%	67%	1%	42%	53%

1-A2 Weekly Country Stocks in Store



1-B2 Weekly Terminal Stocks in Store

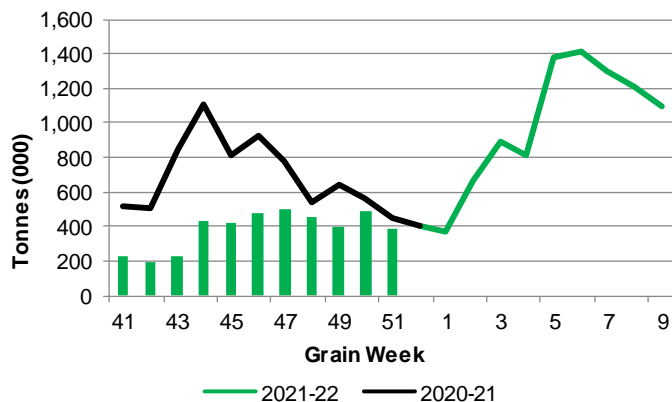


2. Country Deliveries

2-A Country Deliveries ('000 tonnes) – Week 51

	MB	SK	AB	BC	Total
2021-22	72.6	198.9	108.7	1.2	381.4
2020-21	72.4	267.6	103.6	0.5	444.1
4 Wk Avg	86.7	238.1	107.6	1.7	434.0
Var % to Last Year	0%	-26%	5%	140%	-14%
Var % To 4 Wk Avg	-16%	-17%	1%	-29%	-12%

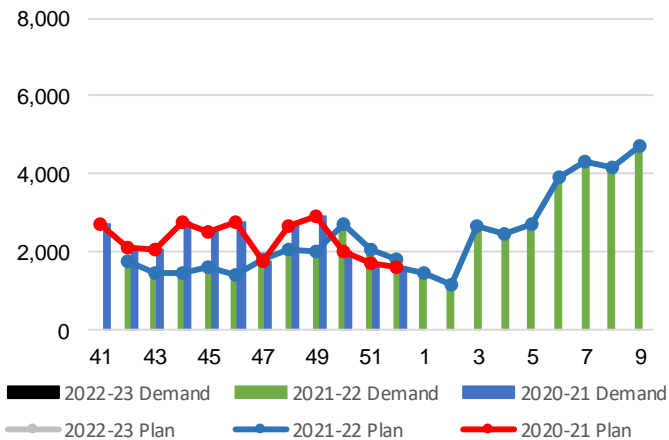
2-B 2021-22 Weekly Country Deliveries



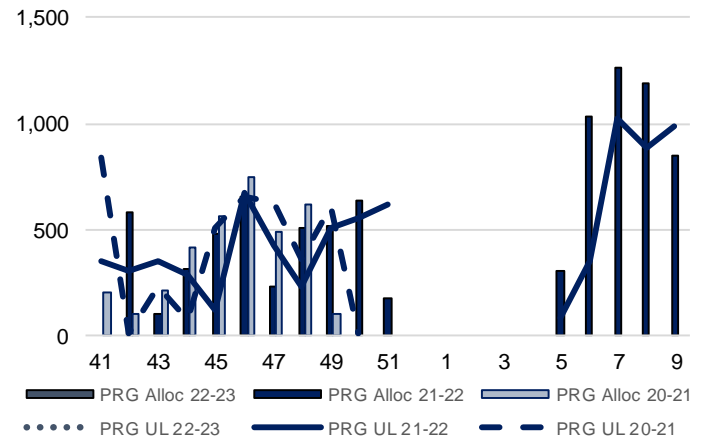
3. Railcar Supply

Special Note to readers: CP discontinued publishing weekly railcar spotting plans in Week 12 2014-15 (GCRS Service Report). CN continues to publish a weekly plan and the graphs below reflect CN's plan to Week 1 2022-23. Note that the orders accepted do not necessarily reflect shipper demand, but rather the railways' acceptance of shippers' car orders. When both railways provide the order fulfillment data requested with the expansion of the GMP mandate, which was announced on February 3, 2014, a complete set of metrics will be presented.

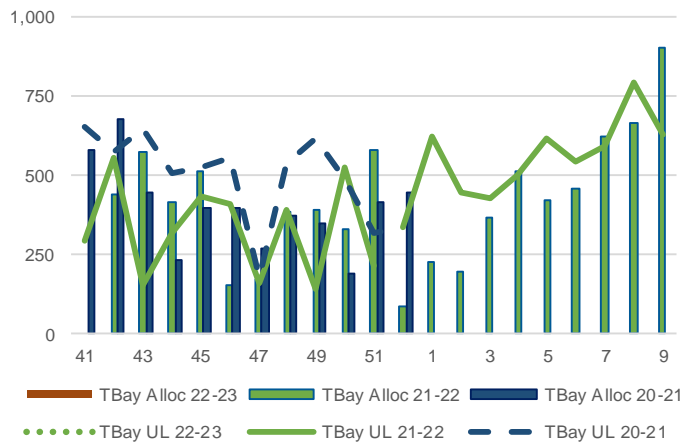
3-A: Canadian National Planned Car Allocation vs. Demand (cars) To Week 1 2022-23



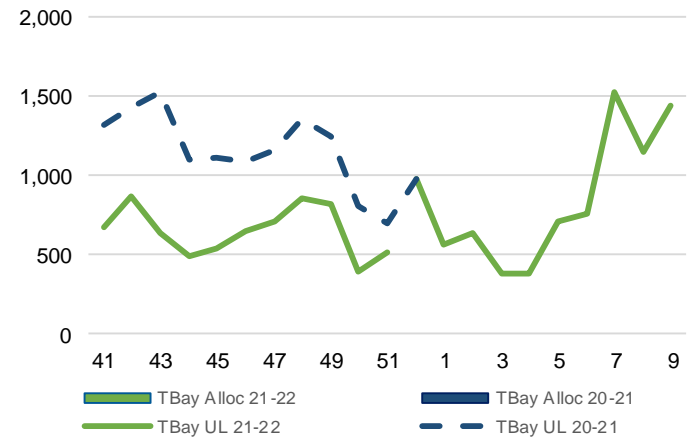
3-B3: Canadian National Planned Car Allocation to Western Ports Vs. Corridor Unloads at Port (cars) – Prince Rupert



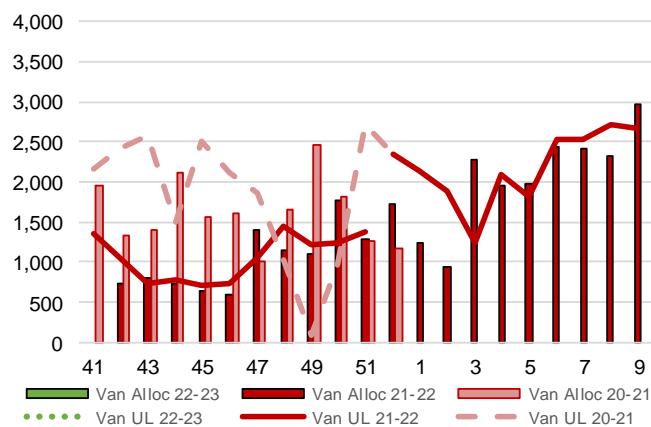
3-B1: Canadian National Planned Car Allocation to Western Ports Vs. Corridor Unloads at Port (cars) – Thunder Bay



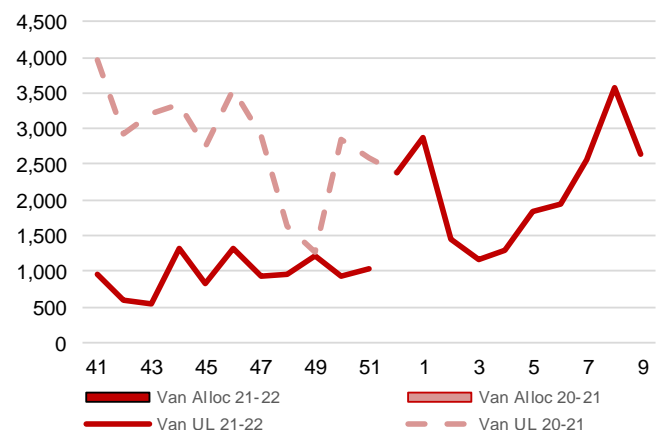
3-C1: Canadian Pacific Planned Car Allocation to Western Ports vs. Corridor Unloads at Port (cars) – Thunder Bay



3-B2: Canadian National Planned Car Allocation to Western Ports Vs. Corridor Unloads at Port (cars) – Vancouver



3-C2: Canadian Pacific Planned Car Allocation to Western Ports vs. Corridor Unloads at Port (cars) – Vancouver



4. Port Performance

4-A Weekly Unloads by Port (Cars) – This Year for Week 51, 4-Week Moving Average and Variances

	Vancouver	Prince Rupert	West Coast	Thunder Bay	Churchill	Total
2021-22	2,417	619	3,036	730	-	3,766
2020-21	5,307	-	5,307	1,022	-	6,329
4-Wk Avg.	2,360	475	2,835	969	-	3,804
Var % to Last Year	-54%	n/a	-43%	-29%	n/a	-40%
Var % to 4-Wk Avg.	2%	30%	7%	-25%	n/a	-1%

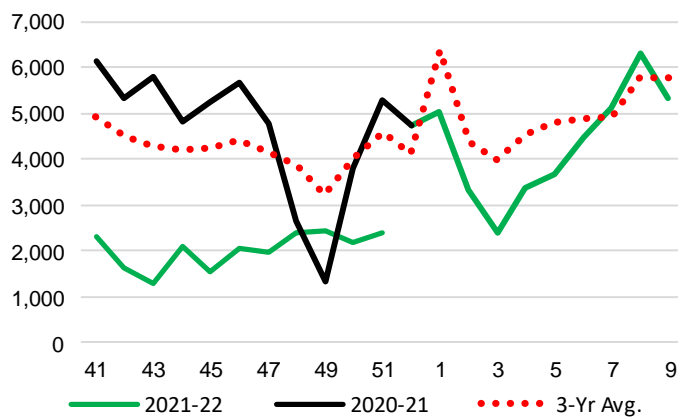
4-B Terminal Unloads by Port – This Year-to-Date as at Week 51 and Variances

YTD Unloads (cars)	Vancouver	Prince Rupert	West Coast	Thunder Bay	Churchill	Total
2021-22	163,636	25,424	189,060	57,193	-	246,253
2020-21	313,320	51,500	364,820	85,630	1,063	451,513
3-Yr Avg	246,529	44,779	291,309	77,725	846	369,880
Var % to Last Year	-48%	-51%	-48%	-33%	-100%	-45%
Var % to 3-Yr Avg	-34%	-43%	-35%	-26%	-100%	-33%

YTD Unloads ('000 tonnes)	Vancouver	Prince Rupert	West Coast	Thunder Bay	Churchill	Total
2021-22	15,475.7	2,379.5	17,855.2	5,477.1	-	23,332.3
2020-21	29,359.2	4,816.3	34,175.5	8,125.5	95.5	42,396.5
3-Yr Avg.	22,998.9	4,156.9	27,155.8	7,345.5	76.4	34,577.7
Var % to Last Year	-47%	-51%	-48%	-33%	-100%	-45%
Var % to 3-Yr Avg.	-33%	-43%	-34%	-25%	-100%	-33%

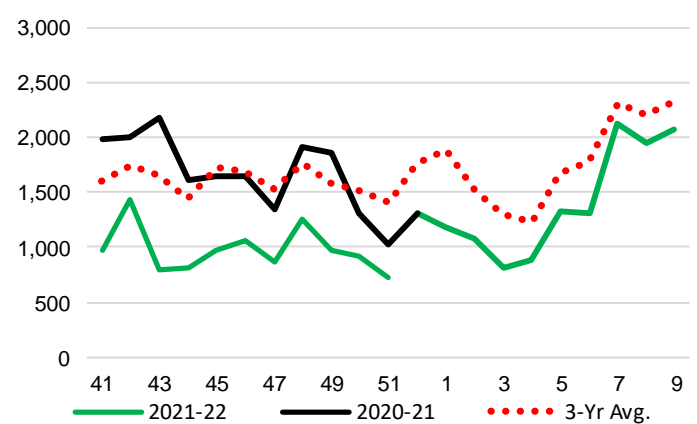
4-C Vancouver Unloads (cars)

(This Year vs. Last Year and the 3-Year Average)



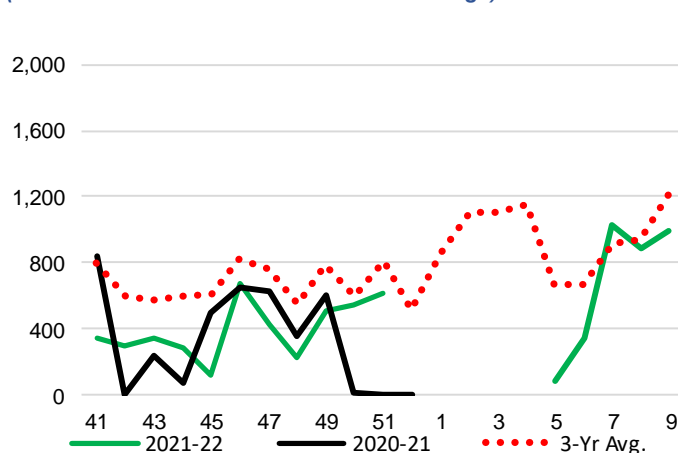
4-E Thunder Bay Unloads (cars)

(This Year vs. Last Year and the 3-Year Average)

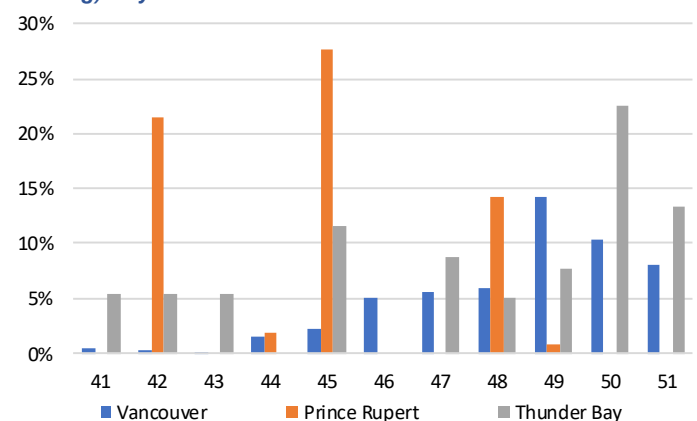


4-D Prince Rupert Unloads (cars)

(This Year vs. Last Year and the 3-Year Average)



4-F Weekly Out-of-Car Time (% of hours out-of-cars / total hours working) – by Port to Week 51



Out-of-car time is measured weekly and uses data from terminal elevators on the total number of hours the facilities are open & staffed (including overtime hours) and the corresponding number of hours that terminals have no railcars available to unload. The measure is expressed as a percentage (hours without cars to the total number of hours working).

4-G Monthly Unloads (cars) – This year vs. Last Year and the 3-Year Average to Week 48 2021-22

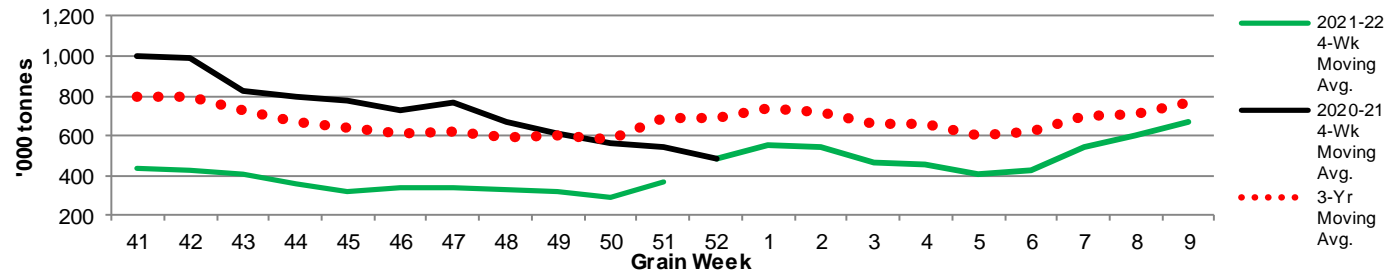
Months	Aug	Sep	Oct	Nov	Dec	Jan	Feb	Mar	Apr	May	Jun	Jul
Weeks	1-4	5-9	10-13	14-17	18-22	23-26	27-30	31-35	36-39	40-43	44-48	49-52
2021-22	18,138	37,000	34,005	23,122	24,236	16,848	16,424	17,807	16,842	13,683	16,833	-
2020-21	35,688	50,352	44,342	42,742	45,462	35,328	28,211	43,126	42,495	34,905	33,574	21,334
3-Yr Avg.	27,880	41,120	38,208	33,351	36,219	24,956	22,386	33,128	33,010	28,951	32,375	28,970
Var % to Last Year	-49%	-27%	-23%	-46%	-47%	-52%	-42%	-59%	-60%	-61%	-50%	
Var % to 3-Yr Avg.	-35%	-10%	-11%	-31%	-33%	-32%	-27%	-46%	-49%	-53%	-48%	

5. Shipments

5-A Shipments from Port Terminals ('000 tonnes) – This Year-to-Date as at Week 51 and Variance to Last Year-to-Date

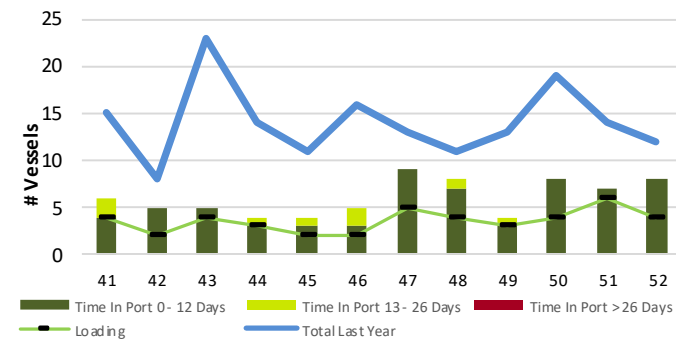
	Vancouver	Prince Rupert	West Coast	Thunder Bay	Churchill	Total
2021-22	15,272.3	2,263.0	17,535.3	5,560.6	-	23,095.9
2020-21	30,505.4	4,882.8	35,388.2	7,802.5	95.7	43,286.4
3-Yr Avg.	23,298.8	4,108.3	27,407.1	7,241.4	77.7	34,726.1
Var % to Last Year	-50%	-54%	-50%	-29%	-100%	-47%
Var % to 3-Yr Avg.	-34%	-45%	-36%	-23%	-100%	-33%

5-B Weekly Shipments ('000 tonnes) from Port Terminals - This year 4-Week moving avg. vs. last year 4-Week moving avg. and the 3-Year moving avg.

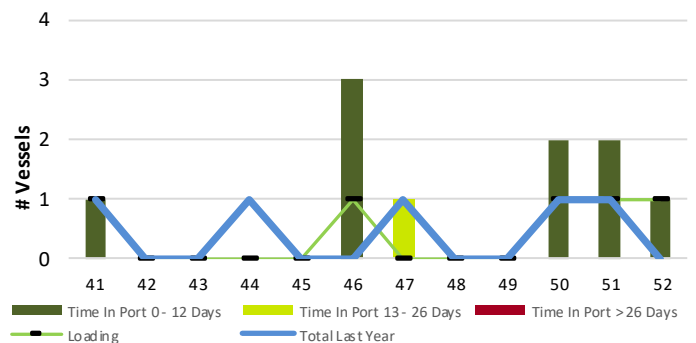


6. Vessels

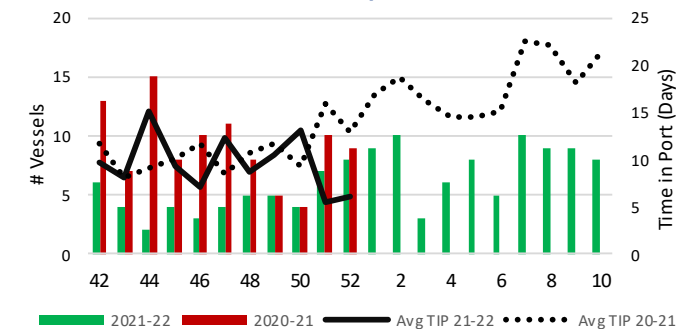
6-A Vessel Lineup at Vancouver as of Week 52 2021-22



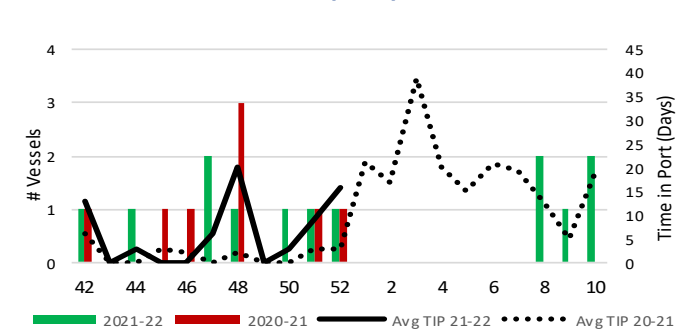
6-C Vessel Lineup at Prince Rupert as of Week 52 2021-22



6-B Vessels Cleared at Vancouver up to Week 52 2021-22



6-D Vessels Cleared at Prince Rupert up to Week 52 2021-22



Note: The 'Time in Port' measure for 6-A and 6-C is calculated as how long each vessel in the lineup has been in port as at Sunday 23:59 of that grain week. The 'Avg Time in Port (TIP)' measure for 6-B and 6-D is the average number of days that all vessels which cleared that week were in port. These measures use vessel data provided by the BC Chamber of Shipping and Pacific Pilotage Authority.