

Grain Monitoring Program

Weekly Performance Update

May 09, 2023

For Grain Week 39 (2022-23 CY)

Summary

	Week 39	Week 38	Var. from Last Year	
1. Stocks in Store ('000 tonnes)				
Country Elevators	↓ 2,917.6	3,169.8	-24%	
% of Working Capacity	53%	58%		
Terminal Elevators	↓ 1,524.1	1,662.5	10%	
% of Working Capacity	79%	86%		
2. Country Deliveries ('000 tonnes)				
Country Deliveries	↑ 664.7	570.6	35%	
3. Railcar Supply to Western Ports (Cars)				
CN Allocation Plan	↓ 3,195	3,737	105%	
CN Unloads	↑ 4,590	4,586	186%	
CP Allocation Plan	n/a	n/a	n/a	
CP Unloads	↓ 3,688	3,942	46%	
4. Port Performance (Cars)				
Total Weekly Unloads	↓ 8,278	8,528	100%	
4-Week Rolling Average	↓ 8,659	8,778	n/a	
Var. to 4-Week Rolling Average	↓ -4%	-3%	n/a	
YTD Unloads	↑ 330,476	322,198	62%	
Weekly Out-of-Car Time	↓ 7.4%	8.8%	228.7%	
5. Terminal Shipments Year-to-Date ('000 tonnes)				
Vancouver	↑ 23,455.3	22,815.7	84%	
Prince Rupert	↑ 3,786.0	3,696.6	108%	
Churchill	— 0.0	0.0	n/a	
Thunder Bay	↑ 4,622.5	4,396.2	14%	
Total Western Canada	31,863.8	30,908.5	71%	
6. Vessels as at May 7, 2023				
	Week 40	Week 39	Var. from Last Year	
Vancouver	Vessel Lineup in port	↑ 15	14	67%
	Vessels Cleared	↓ 6	13	0%
	Vessels Arrived	↓ 7	9	75%
Pr. Rupert	Vessel Lineup in port	↓ 2	3	100%
	Vessels Cleared	— 2	2	100%
	Vessels Arrived	↓ 1	3	-50%
Vessels Inbound May 08, 2023 to May 14, 2023 (Week 41)				
Vancouver	10			
Prince Rupert	0			

1. Stocks in Store: (Page 2)

- Country stocks decreased to 2.92 MMT in Week 39 utilizing 53% of the system's working capacity. Space in primary elevators is good.
- Total western port terminal stocks decreased to 1.52 MMT in Week 39, utilizing 79% of the working capacity.

2. Country Deliveries: (Page 2)

- Deliveries to primary elevators were 0.66 MMT in Week 39.
- Axle Weight Restrictions (road bans) are in effect across the prairies.

3. Railcar Supply: (Page 3)

- Railcar allocation plans are supplied by CN to Week 41 2022-23 (see page 3 for details).

4. Port Performance: (Page 4)

- Total western port unloads were 4% lower than the 4-week moving average and 100% higher than Week 39 last year.
- West Coast unloads were 6,212 cars (Vancouver 5,076 and Prince Rupert 1,136), 6% lower than the 4-week moving average and 108% higher than Week 39 last year.
- Thunder Bay unloads were 2,066 cars, 1% higher than the 4-week moving average and 79% higher than Week 39 last year.
- Year-to-date total western port unloads are 62% higher than the same period last year. The corresponding tonnage is 65% higher than the same period last year.
- The total average terminal out-of-car time (OCT) decreased to 7.4% from 8.8% the previous week. The OCT for Week 39 was 10.2% at Vancouver, 0.0% at Prince Rupert, and 1.6% at Thunder Bay.

5. Shipments: (Page 5)

- Year-to-date Western Canadian shipments from port terminal elevators at Week 39 are 71% higher than the same period last year and 12% higher than the 3-year average.

6. Vessels: (Page 5)

- Vancouver vessel lineup for Week 40 2022-23 increased to 15 vessels (The current one-year average at Vancouver is 20 vessels). Of the 15, 7 were at berth, 7 were anchored at English Bay, 0 were anchored at Burrard Inlet, and 1 was anchored at Vancouver Island.
- Prince Rupert vessel lineup for Week 40 2022-23 decreased to 2 vessels (The current one-year average at Prince Rupert is 2 vessels).
- Vessels cleared from Vancouver was 6, and from Prince Rupert was 2 in Week 40 2022-23.

1. Stocks in Store

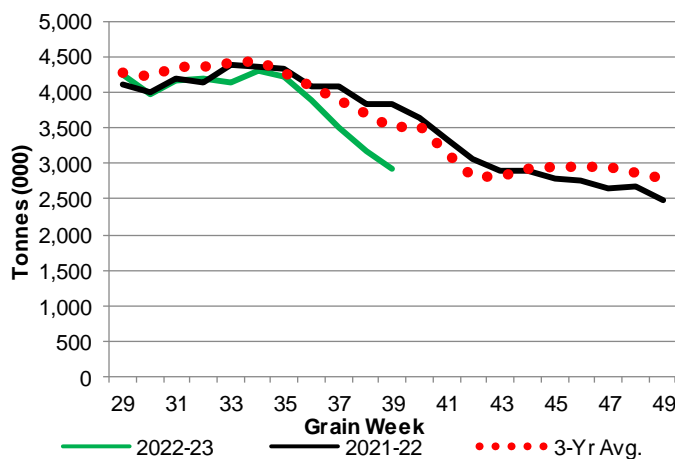
1-A1 Country Stocks ('000 tonnes) – Week 39

	MB	SK	AB	BC	Total
2022-23	624.0	1,232.5	1,037.9	23.2	2,917.6
2021-22	597.0	1,978.7	1,228.5	19.7	3,823.9
3-Yr Avg.	640.7	1,728.2	1,121.7	23.0	3,513.7
Var % - LY	5%	-38%	-16%	18%	-24%
Var % 3-Yr Avg.	-3%	-29%	-7%	1%	-17%
Storage Capacity	1,680.8	4,218.5	2,510.6	41.2	8,451.1
Estimated Working Capacity	1,092.5	2,742.1	1,631.9	26.8	5,493.3
22-23 % of Wkg Cap	57%	45%	64%	87%	53%

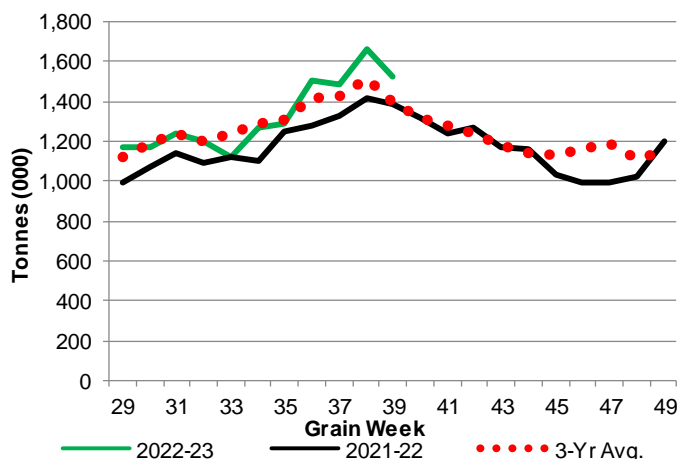
1-B1 Terminal Stocks ('000 tonnes) – Week 39

	VC	PR	West Coast	CH	TB	Total
2022-23	658.3	130.2	788.5	0.7	734.9	1,524.1
2021-22	646.1	136.1	782.2	0.7	603.9	1,386.8
3-Yr Avg.	660.5	114.4	774.9	0.7	623.8	1,399.4
Var % - LY	2%	-4%	1%	0%	22%	10%
Var % 3-Yr Avg.	0%	14%	2%	0%	18%	9%
Storage Capacity	1,275.5	209.5	1,485.0	140.0	1,127.5	2,752.5
Estimated Working Capacity	892.9	146.7	1,039.6	98.0	789.2	1,926.8
22-23 % of Wkg Cap	74%	89%	76%	1%	93%	79%

1-A2 Weekly Country Stocks in Store



1-B2 Weekly Terminal Stocks in Store

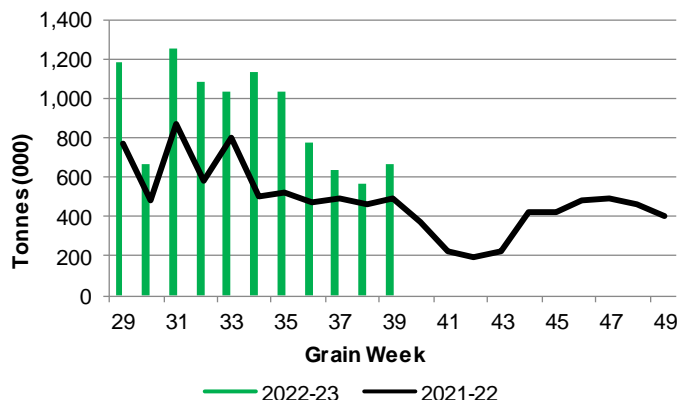


2. Country Deliveries

2-A Country Deliveries ('000 tonnes) – Week 39

	MB	SK	AB	BC	Total
2022-23	140.0	303.9	218.1	2.7	664.7
2021-22	90.3	253.8	144.4	2.7	491.2
4 Wk Avg	129.6	278.3	249.5	4.5	661.9
Var % to Last Year	55%	20%	51%	0%	35%
Var % To 4 Wk Avg	8%	9%	-13%	-40%	0%

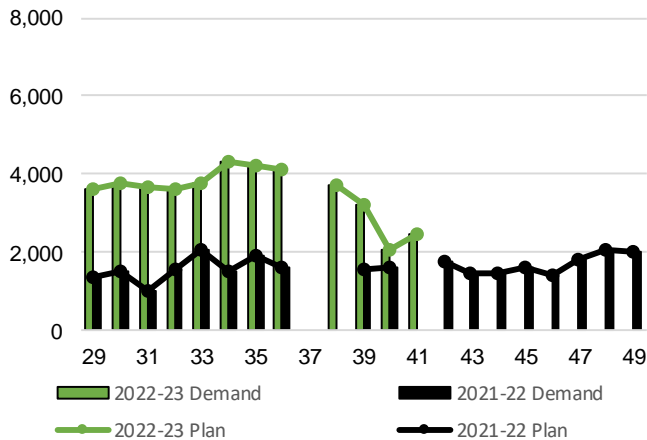
2-B 2022-23 Weekly Country Deliveries



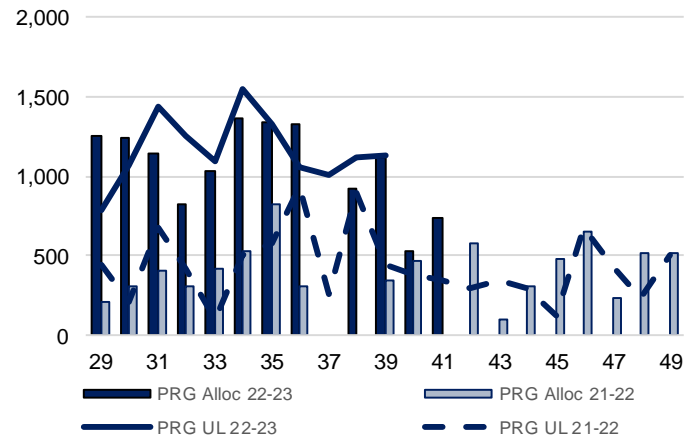
3. Railcar Supply

Special Note to readers: CP discontinued publishing weekly railcar spotting plans in Week 12 2014-15 (GCRS Service Report). CN continues to publish a weekly plan and the graphs below reflect CN's plan to Week 41 2022-23. Note that the orders accepted do not necessarily reflect shipper demand, but rather the railways' acceptance of shippers' car orders. When both railways provide the order fulfillment data requested with the expansion of the GMP mandate, which was announced on February 3, 2014, a complete set of metrics will be presented.

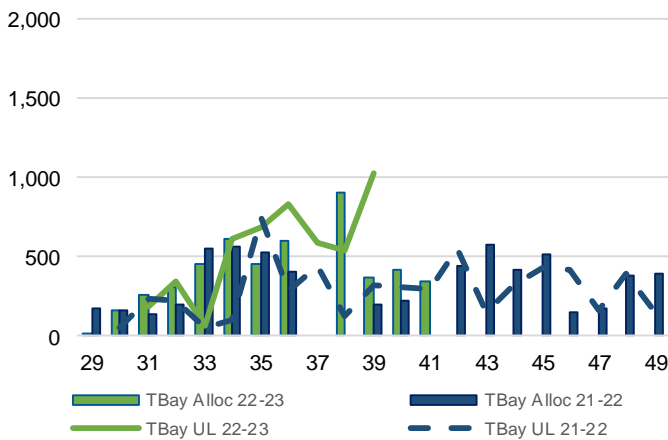
3-A: Canadian National Planned Car Allocation vs. Demand (cars) To Week 41 2022-23



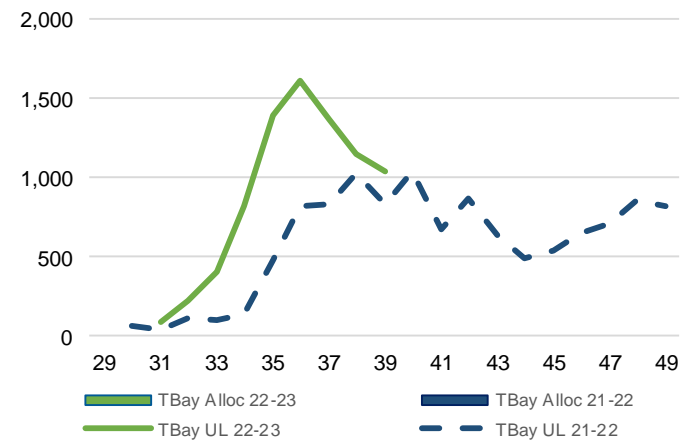
3-B3: Canadian National Planned Car Allocation to Western Ports Vs. Corridor Unloads at Port (cars) – Prince Rupert



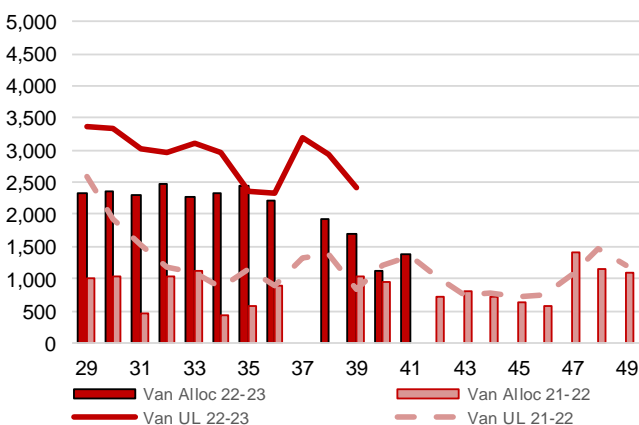
3-B1: Canadian National Planned Car Allocation to Western Ports Vs. Corridor Unloads at Port (cars) – Thunder Bay



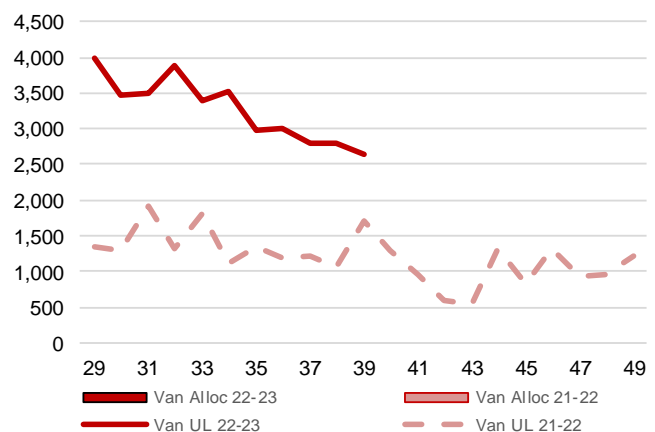
3-C1: Canadian Pacific Planned Car Allocation to Western Ports vs. Corridor Unloads at Port (cars) – Thunder Bay



3-B2: Canadian National Planned Car Allocation to Western Ports Vs. Corridor Unloads at Port (cars) – Vancouver



3-C2: Canadian Pacific Planned Car Allocation to Western Ports vs. Corridor Unloads at Port (cars) – Vancouver



4. Port Performance

4-A Weekly Unloads by Port (Cars) – This Year for Week 39, 4-Week Moving Average and Variances

	Vancouver	Prince Rupert	West Coast	Thunder Bay	Churchill	Total
2022-23	5,076	1,136	6,212	2,066	-	8,278
2021-22	2,533	447	2,980	1,152	-	4,132
4-Wk Avg.	5,536	1,081	6,616	2,042	-	8,659
Var % to Last Year	100%	154%	108%	79%	n/a	100%
Var % to 4-Wk Avg.	-8%	5%	-6%	1%	n/a	-4%

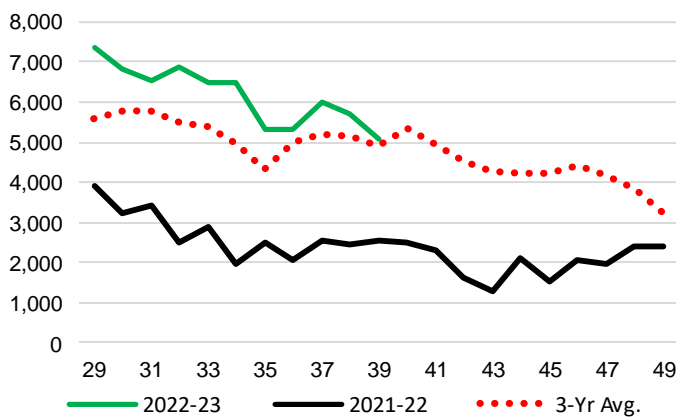
4-B Terminal Unloads by Port – This Year-to-Date as at Week 39 and Variances

YTD Unloads (cars)	Vancouver	Prince Rupert	West Coast	Thunder Bay	Churchill	Total
2022-23	237,423	40,116	277,539	52,937	-	330,476
2021-22	138,559	20,644	159,203	45,035	-	204,238
3-Yr Avg	210,336	35,726	246,062	54,404	354	300,820
Var % to Last Year	71%	94%	74%	18%	n/a	62%
Var % to 3-Yr Avg	13%	12%	13%	-3%	-100%	10%

YTD Unloads ('000 tonnes)	Vancouver	Prince Rupert	West Coast	Thunder Bay	Churchill	Total
2022-23	22,919.9	3,854.8	26,774.7	5,102.2	-	31,876.9
2021-22	13,061.2	1,924.0	14,985.2	4,285.7	-	19,270.9
3-Yr Avg.	19,929.4	3,375.3	23,304.6	5,175.5	31.8	28,511.9
Var % to Last Year	75%	100%	79%	19%	n/a	65%
Var % to 3-Yr Avg.	15%	14%	15%	-1%	-100%	12%

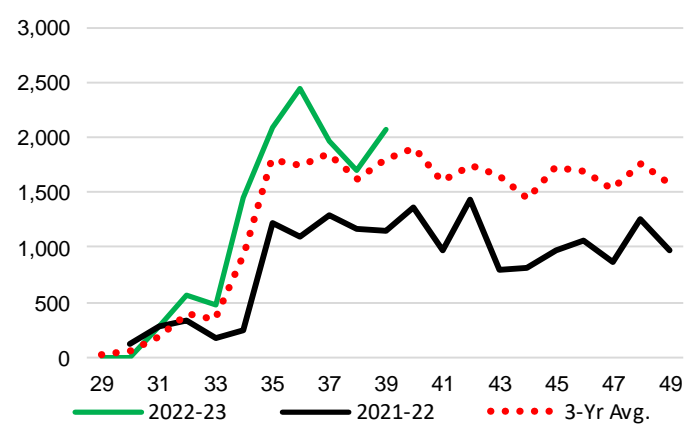
4-C Vancouver Unloads (cars)

(This Year vs. Last Year and the 3-Year Average)



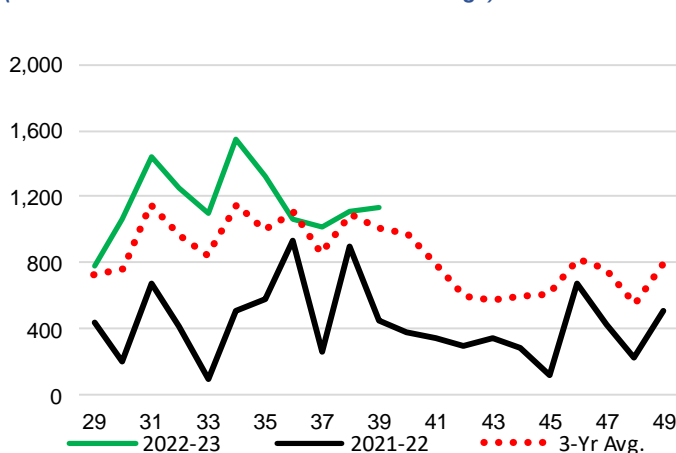
4-E Thunder Bay Unloads (cars)

(This Year vs. Last Year and the 3-Year Average)

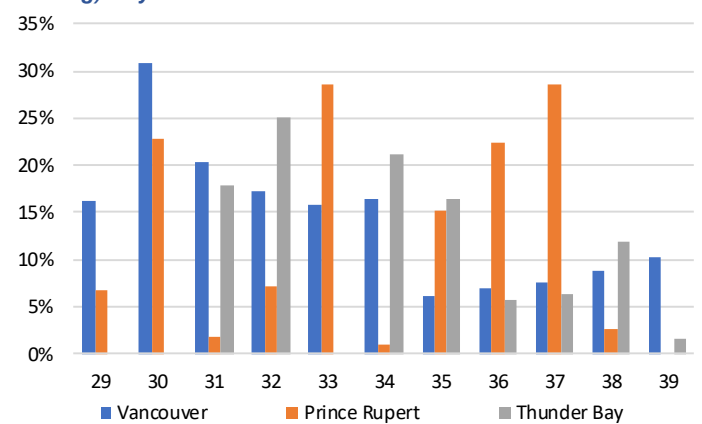


4-D Prince Rupert Unloads (cars)

(This Year vs. Last Year and the 3-Year Average)



4-F Weekly Out-of-Car Time (% of hours out-of-cars / total hours working) – by Port to Week 39



Out-of-car time is measured weekly and uses data from terminal elevators on the total number of hours the facilities are open & staffed (including overtime hours) and the corresponding number of hours that terminals have no railcars available to unload. The measure is expressed as a percentage (hours without cars to the total number of hours working).

4-G Monthly Unloads (cars) – This year vs. Last Year and the 3-Year Average to Week 39 2022-23

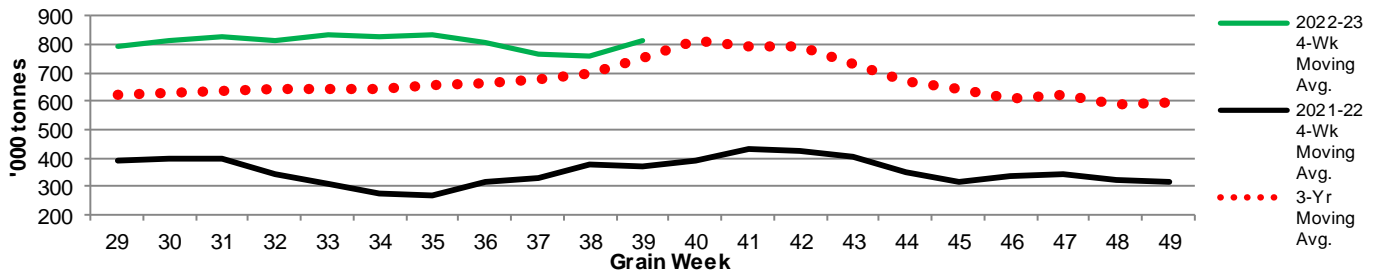
Months	Aug	Sep	Oct	Nov	Dec	Jan	Feb	Mar	Apr	May	Jun	Jul
Weeks	1-5	6-9	10-13	14-18	19-22	23-26	27-30	31-35	36-39	40-44	45-48	49-52
2022-23	17,592	37,081	45,507	54,625	31,875	34,268	31,667	43,227	34,634	-	-	-
2021-22	23,199	31,888	34,000	27,251	20,099	16,847	16,324	17,791	16,839	16,881	13,630	15,436
3-Yr Avg.	28,664	36,603	41,283	44,994	29,024	28,814	25,401	34,715	31,323	35,187	26,137	23,809
Var % to Last Year	-24%	16%	34%	100%	59%	103%	94%	143%	106%			
Var % to 3-Yr Avg.	-39%	1%	10%	21%	10%	19%	25%	25%	11%			

5. Shipments

5-A Shipments from Port Terminals ('000 tonnes) – This Year-to-Date as at Week 39 and Variance to Last Year-to-Date

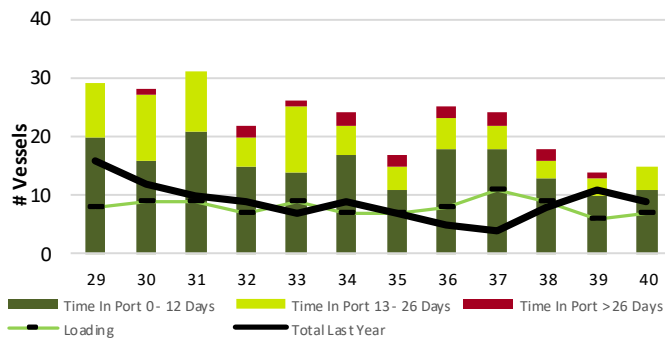
	Vancouver	Prince Rupert	West Coast	Thunder Bay	Churchill	Total
2022-23	23,455.3	3,786.0	27,241.3	4,622.5	-	31,863.8
2021-22	12,743.8	1,824.1	14,567.9	4,073.7	-	18,641.6
3-Yr Avg.	20,235.6	3,311.4	23,547.1	4,848.2	31.9	28,427.1
Var % to Last Year	84%	108%	87%	13%	n/a	71%
Var % to 3-Yr Avg.	16%	14%	16%	-5%	-100%	12%

5-B Weekly Shipments ('000 tonnes) from Port Terminals - This year 4-Week moving avg. vs. last year 4-Week moving avg. and the 3-Year moving avg.

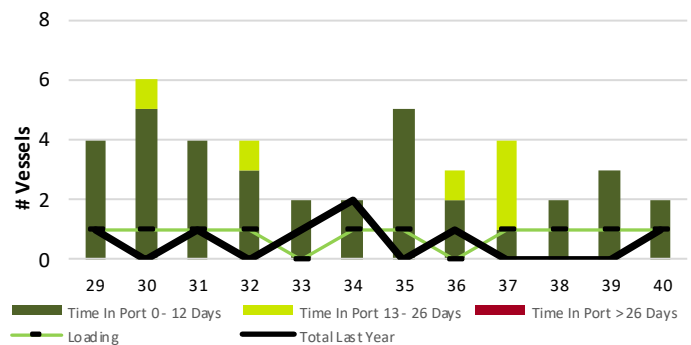


6. Vessels

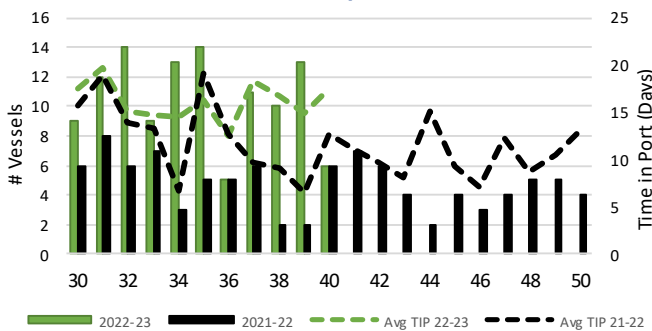
6-A Vessel Lineup at Vancouver as of Week 40 2022-23



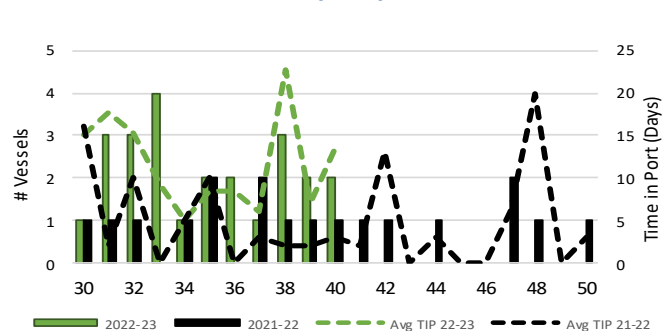
6-C Vessel Lineup at Prince Rupert as of Week 40 2022-23



6-B Vessels Cleared at Vancouver up to Week 40 2022-23



6-D Vessels Cleared at Prince Rupert up to Week 40 2022-23



Note: The 'Time in Port' measure for 6-A and 6-C is calculated as how long each vessel in the lineup has been in port as at Sunday 23:59 of that grain week. The 'Avg Time in Port (TIP)' measure for 6-B and 6-D is the average number of days that all vessels which cleared that week were in port. These measures use vessel data provided by the BC Chamber of Shipping and Pacific Pilotage Authority.