

Grain Monitoring Program

Weekly Performance Update

May 16, 2023

For Grain Week 40 (2022-23 CY)

Summary

	Week 40	Week 39	Var. from Last Year	
1. Stocks in Store ('000 tonnes)				
Country Elevators	↓ 2,760.8	2,917.6	-24%	
% of Working Capacity	50%	53%		
Terminal Elevators	↓ 1,437.3	1,524.1	9%	
% of Working Capacity	75%	79%		
2. Country Deliveries ('000 tonnes)				
Country Deliveries	↓ 554.2	664.7	47%	
3. Railcar Supply to Western Ports (Cars)				
CN Allocation Plan	↓ 2,070	3,195	27%	
CN Unloads	↓ 3,751	4,590	97%	
CP Allocation Plan	n/a	n/a	n/a	
CP Unloads	↑ 4,064	3,688	73%	
4. Port Performance (Cars)				
Total Weekly Unloads	↓ 7,815	8,278	84%	
4-Week Rolling Average	↓ 8,401	8,659	n/a	
Var. to 4-Week Rolling Average	↓ -7%	-4%	n/a	
YTD Unloads	↑ 338,291	330,476	62%	
Weekly Out-of-Car Time	↓ 5.1%	7.4%	57.7%	
5. Terminal Shipments Year-to-Date ('000 tonnes)				
Vancouver	↑ 23,923.9	23,455.3	83%	
Prince Rupert	↑ 3,897.8	3,786.0	107%	
Churchill	— 0.0	0.0	n/a	
Thunder Bay	↑ 4,837.7	4,622.5	14%	
Total Western Canada	32,659.4	31,863.8	70%	
6. Vessels as at May 14, 2023				
	Week 41	Week 40	Var. from Last Year	
Vancouver	Vessel Lineup in port	— 15	15	150%
	Vessels Cleared	↑ 9	6	29%
	Vessels Arrived	↑ 9	7	125%
Pr. Rupert	Vessel Lineup in port	↓ 1	2	0%
	Vessels Cleared	↓ 1	2	0%
	Vessels Arrived	↓ 0	1	-100%
Vessels Inbound May 15, 2023 to May 21, 2023 (Week 42)				
Vancouver	5			
Prince Rupert	0			

1. Stocks in Store: (Page 2)

- Country stocks decreased to 2.76 MMT in Week 40 utilizing 50% of the system's working capacity. Space in primary elevators is good.
- Total western port terminal stocks decreased to 1.44 MMT in Week 40, utilizing 75% of the working capacity.

2. Country Deliveries: (Page 2)

- Deliveries to primary elevators were 0.55 MMT in Week 40.
- Axle Weight Restrictions (road bans) are in effect across the prairies.

3. Railcar Supply: (Page 3)

- Railcar allocation plans are supplied by CN to Week 41 2022-23 (see page 3 for details).

4. Port Performance: (Page 4)

- Total western port unloads were 7% lower than the 4-week moving average and 84% higher than Week 40 last year.
- West Coast unloads were 5,919 cars (Vancouver 5,027 and Prince Rupert 892), 9% lower than the 4-week moving average and 105% higher than Week 40 last year.
- Thunder Bay unloads were 1,896 cars, even with the 4-week moving average and 40% higher than Week 40 last year.
- Year-to-date total western port unloads are 62% higher than the same period last year. The corresponding tonnage is 66% higher than the same period last year.
- The total average terminal out-of-car time (OCT) decreased to 5.1% from 7.4% the previous week. The OCT for Week 40 was 5.2% at Vancouver and 4.4% at Thunder Bay. At the time of publishing, Prince Rupert had not yet reported Week 40 OCT.

5. Shipments: (Page 5)

- Year-to-date Western Canadian shipments from port terminal elevators at Week 40 are 70% higher than the same period last year and 12% higher than the 3-year average.

6. Vessels: (Page 5)

- Vancouver vessel lineup for Week 41 2022-23 remained at 15 vessels (The current one-year average at Vancouver is 20 vessels). Of the 15, 6 were at berth, 7 were anchored at English Bay, 1 was anchored at Burrard Inlet, and 1 was anchored at Vancouver Island.
- Prince Rupert vessel lineup for Week 41 2022-23 decreased to 1 vessel (The current one-year average at Prince Rupert is 2 vessels).
- Vessels cleared from Vancouver was 9, and from Prince Rupert was 1 in Week 41 2022-23.

1. Stocks in Store

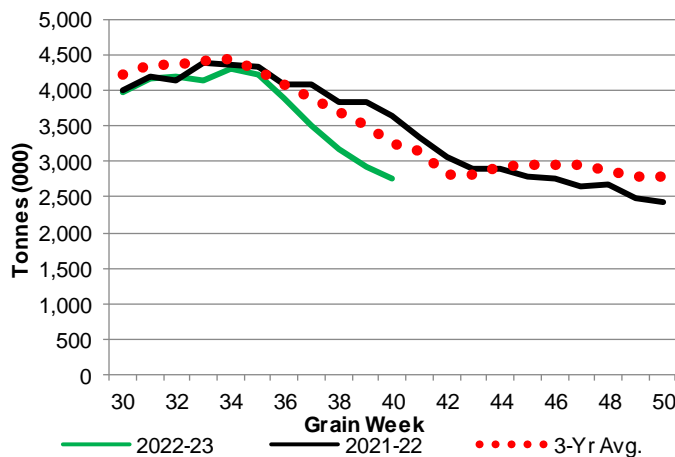
1-A1 Country Stocks ('000 tonnes) – Week 40

	MB	SK	AB	BC	Total
2022-23	597.3	1,242.1	897.6	23.8	2,760.8
2021-22	576.3	1,910.8	1,124.0	19.4	3,630.5
3-Yr Avg.	608.7	1,632.5	996.1	21.9	3,259.2
Var % - LY	4%	-35%	-20%	23%	-24%
Var % 3-Yr Avg.	-2%	-24%	-10%	9%	-15%
Storage Capacity	1,680.8	4,217.4	2,507.8	41.2	8,447.2
Estimated Working Capacity	1,092.5	2,741.3	1,630.1	26.8	5,490.7
22-23 % of Wkg Cap	55%	45%	55%	89%	50%

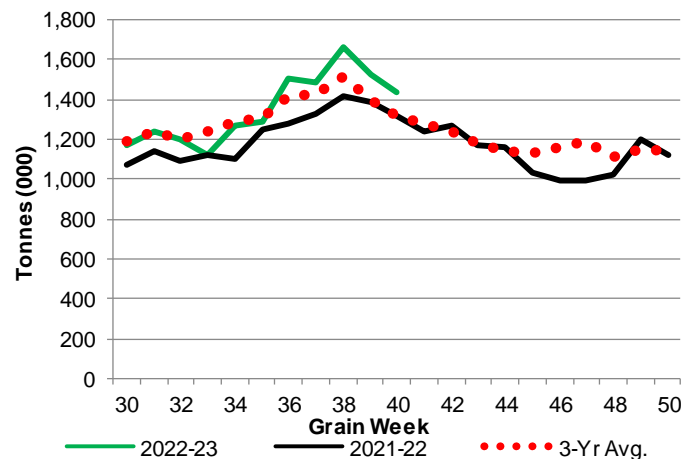
1-B1 Terminal Stocks ('000 tonnes) – Week 40

	VC	PR	West Coast	CH	TB	Total
2022-23	702.7	74.6	777.3	0.7	659.3	1,437.3
2021-22	605.3	117.1	722.4	0.7	593.6	1,316.7
3-Yr Avg.	650.4	100.3	750.7	0.7	565.1	1,316.5
Var % - LY	16%	-36%	8%	0%	11%	9%
Var % 3-Yr Avg.	8%	-26%	4%	0%	17%	9%
Storage Capacity	1,275.5	209.5	1,485.0	140.0	1,127.5	2,752.5
Estimated Working Capacity	892.9	146.7	1,039.6	98.0	789.2	1,926.8
22-23 % of Wkg Cap	79%	51%	75%	1%	84%	75%

1-A2 Weekly Country Stocks in Store



1-B2 Weekly Terminal Stocks in Store

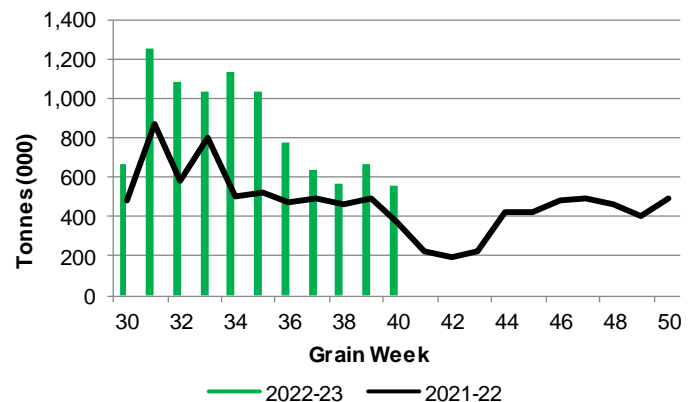


2. Country Deliveries

2-A Country Deliveries ('000 tonnes) – Week 40

	MB	SK	AB	BC	Total
2022-23	132.0	328.1	90.4	3.7	554.2
2021-22	82.7	197.7	94.7	1.4	376.5
4 Wk Avg	139.6	255.9	206.6	4.3	606.3
Var % to Last Year	60%	66%	-5%	164%	47%
Var % To 4 Wk Avg	-5%	28%	-56%	-14%	-9%

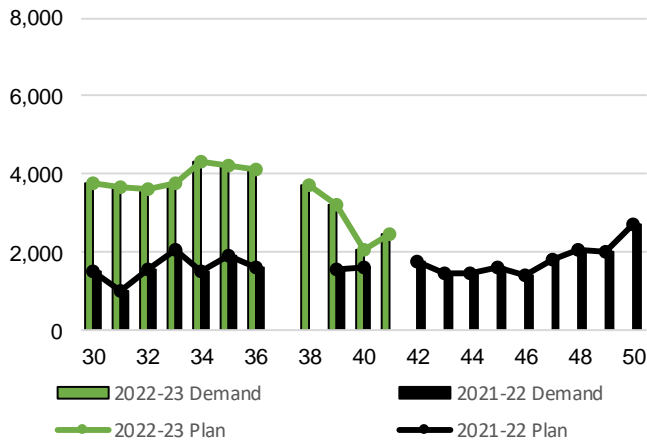
2-B 2022-23 Weekly Country Deliveries



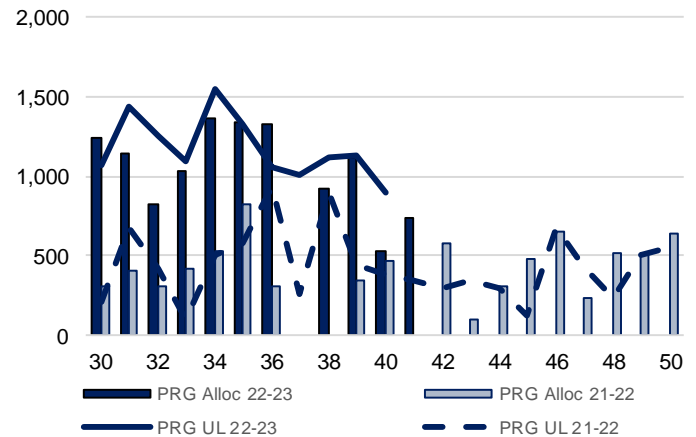
3. Railcar Supply

Special Note to readers: CP discontinued publishing weekly railcar spotting plans in Week 12 2014-15 (GCRS Service Report). CN continues to publish a weekly plan and the graphs below reflect CN's plan to Week 41 2022-23. Note that the orders accepted do not necessarily reflect shipper demand, but rather the railways' acceptance of shippers' car orders. When both railways provide the order fulfillment data requested with the expansion of the GMP mandate, which was announced on February 3, 2014, a complete set of metrics will be presented.

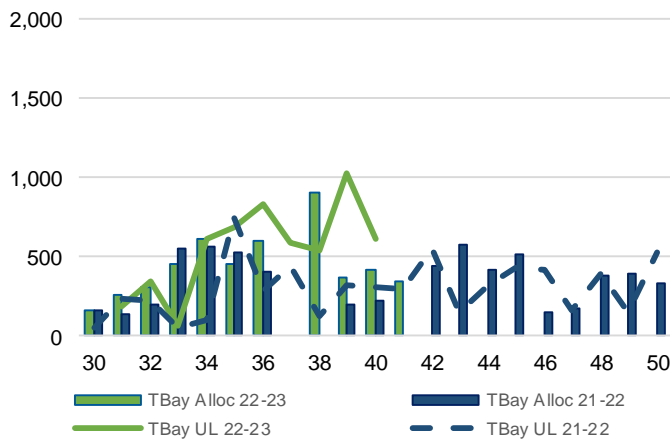
3-A: Canadian National Planned Car Allocation vs. Demand (cars) To Week 41 2022-23



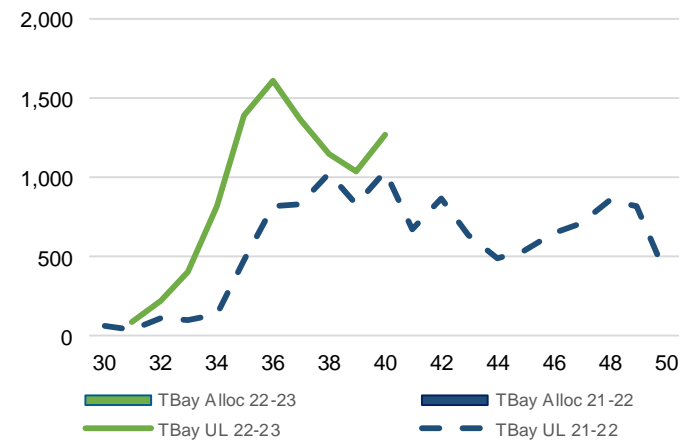
3-B3: Canadian National Planned Car Allocation to Western Ports Vs. Corridor Unloads at Port (cars) – Prince Rupert



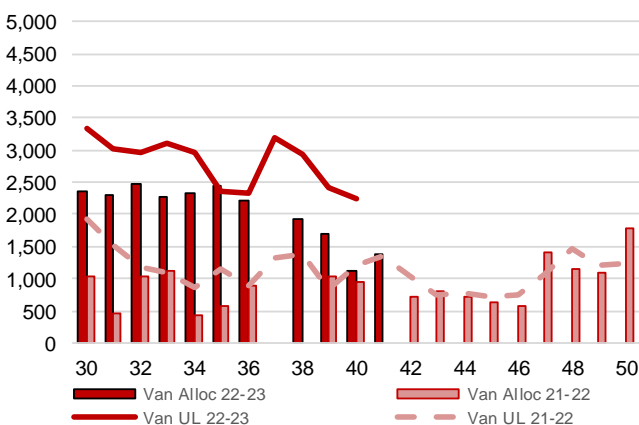
3-B1: Canadian National Planned Car Allocation to Western Ports Vs. Corridor Unloads at Port (cars) – Thunder Bay



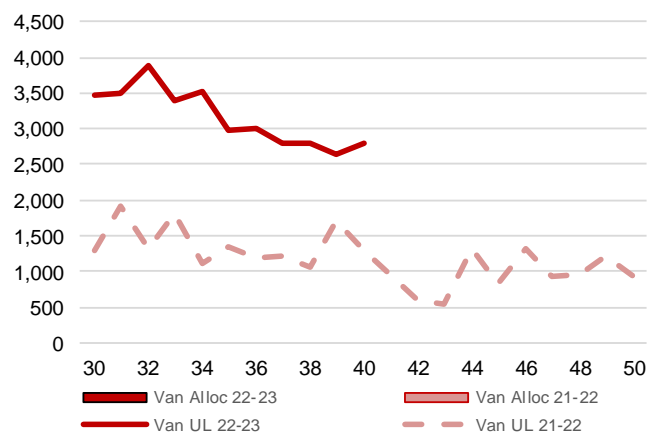
3-C1: Canadian Pacific Planned Car Allocation to Western Ports vs. Corridor Unloads at Port (cars) – Thunder Bay



3-B2: Canadian National Planned Car Allocation to Western Ports Vs. Corridor Unloads at Port (cars) – Vancouver



3-C2: Canadian Pacific Planned Car Allocation to Western Ports vs. Corridor Unloads at Port (cars) – Vancouver



4. Port Performance

4-A Weekly Unloads by Port (Cars) – This Year for Week 40, 4-Week Moving Average and Variances

	Vancouver	Prince Rupert	West Coast	Thunder Bay	Churchill	Total
2022-23	5,027	892	5,919	1,896	-	7,815
2021-22	2,517	375	2,892	1,354	-	4,246
4-Wk Avg.	5,457	1,039	6,495	1,906	-	8,401
Var % to Last Year	100%	138%	105%	40%	n/a	84%
Var % to 4-Wk Avg.	-8%	-14%	-9%	0%	n/a	-7%

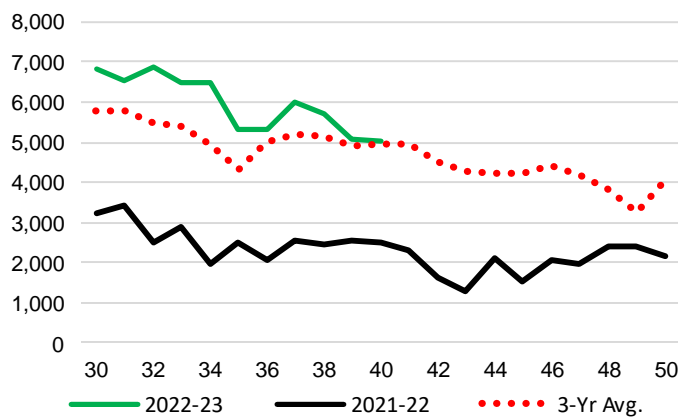
4-B Terminal Unloads by Port – This Year-to-Date as at Week 40 and Variances

YTD Unloads (cars)	Vancouver	Prince Rupert	West Coast	Thunder Bay	Churchill	Total
2022-23	242,450	41,008	283,458	54,833	-	338,291
2021-22	141,076	21,019	162,095	46,389	-	208,484
3-Yr Avg	215,294	36,537	251,831	56,116	354	308,301
Var % to Last Year	72%	95%	75%	18%	n/a	62%
Var % to 3-Yr Avg	13%	12%	13%	-2%	-100%	10%

YTD Unloads ('000 tonnes)	Vancouver	Prince Rupert	West Coast	Thunder Bay	Churchill	Total
2022-23	23,393.6	3,940.4	27,334.0	5,285.4	-	32,619.4
2021-22	13,297.0	1,960.6	15,257.6	4,416.6	-	19,674.2
3-Yr Avg.	20,398.6	3,451.1	23,849.7	5,341.2	31.8	29,222.7
Var % to Last Year	76%	101%	79%	20%	n/a	66%
Var % to 3-Yr Avg.	15%	14%	15%	-1%	-100%	12%

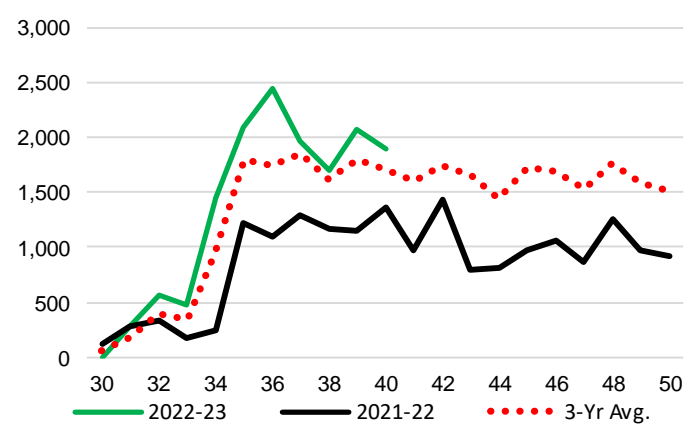
4-C Vancouver Unloads (cars)

(This Year vs. Last Year and the 3-Year Average)



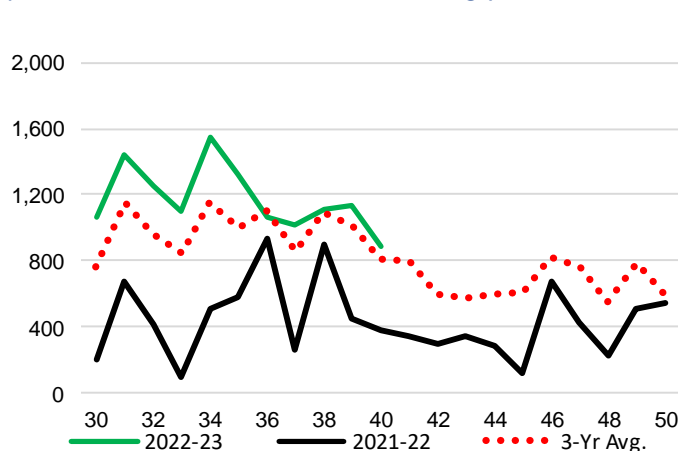
4-E Thunder Bay Unloads (cars)

(This Year vs. Last Year and the 3-Year Average)

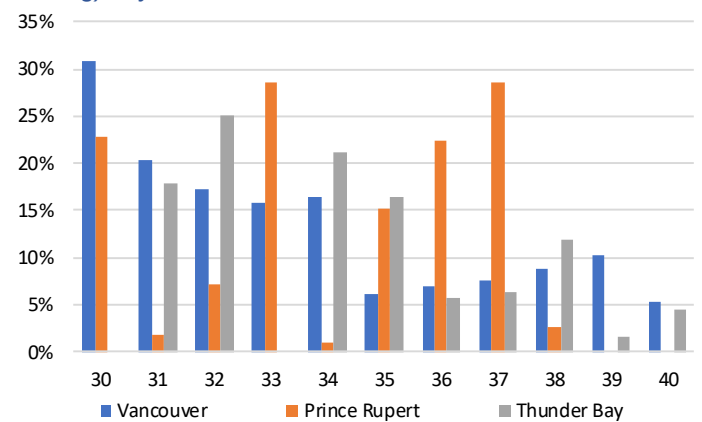


4-D Prince Rupert Unloads (cars)

(This Year vs. Last Year and the 3-Year Average)



4-F Weekly Out-of-Car Time (% of hours out-of-cars / total hours working) – by Port to Week 40



Out-of-car time is measured weekly and uses data from terminal elevators on the total number of hours the facilities are open & staffed (including overtime hours) and the corresponding number of hours that terminals have no railcars available to unload. The measure is expressed as a percentage (hours without cars to the total number of hours working).

4-G Monthly Unloads (cars) – This year vs. Last Year and the 3-Year Average to Week 39 2022-23

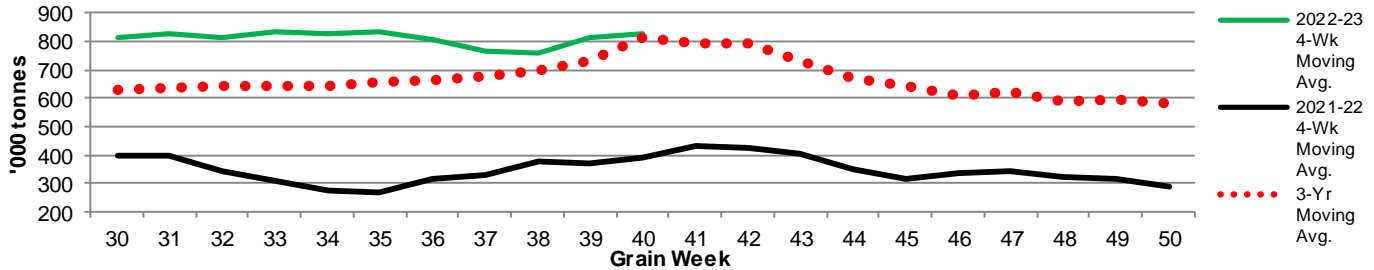
Months	Aug	Sep	Oct	Nov	Dec	Jan	Feb	Mar	Apr	May	Jun	Jul
Weeks	1-5	6-9	10-13	14-18	19-22	23-26	27-30	31-35	36-39	40-44	45-48	49-52
2022-23	17,592	37,081	45,507	54,625	31,875	34,268	31,667	43,227	34,634	-	-	-
2021-22	23,199	31,888	34,000	27,251	20,099	16,847	16,324	17,791	16,839	16,881	13,630	15,436
3-Yr Avg.	28,664	36,603	41,283	44,994	29,024	28,814	25,401	34,715	31,323	35,187	26,137	23,809
Var % to Last Year	-24%	16%	34%	100%	59%	103%	94%	143%	106%			
Var % to 3-Yr Avg.	-39%	1%	10%	21%	10%	19%	25%	25%	11%			

5. Shipments

5-A Shipments from Port Terminals ('000 tonnes) – This Year-to-Date as at Week 40 and Variance to Last Year-to-Date

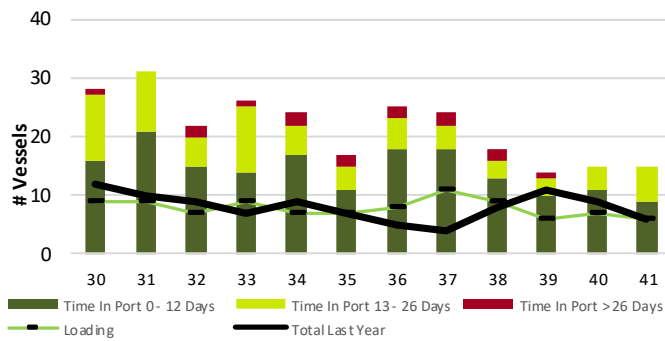
	Vancouver	Prince Rupert	West Coast	Thunder Bay	Churchill	Total
2022-23	23,923.9	3,897.8	27,821.7	4,837.7	-	32,659.4
2021-22	13,069.9	1,879.1	14,949.0	4,259.0	-	19,208.0
3-Yr Avg.	20,769.4	3,403.7	24,173.1	5,073.2	31.9	29,278.2
Var % to Last Year	83%	107%	86%	14%	n/a	70%
Var % to 3-Yr Avg.	15%	15%	15%	-5%	-100%	12%

5-B Weekly Shipments ('000 tonnes) from Port Terminals - This year 4-Week moving avg. vs. last year 4-Week moving avg. and the 3-Year moving avg.

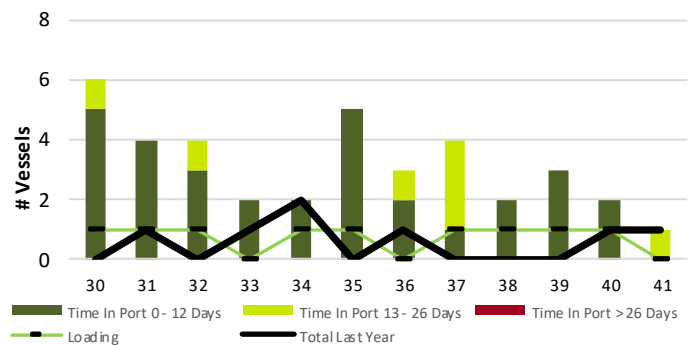


6. Vessels

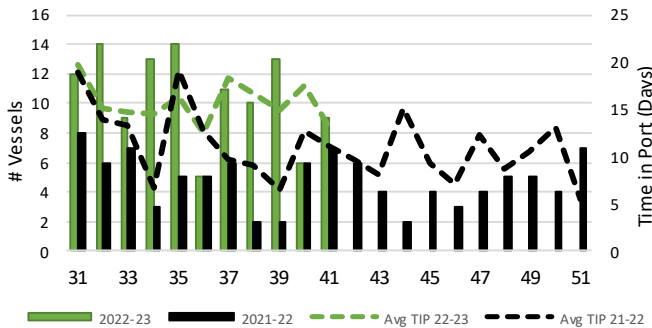
6-A Vessel Lineup at Vancouver as of Week 41 2022-23



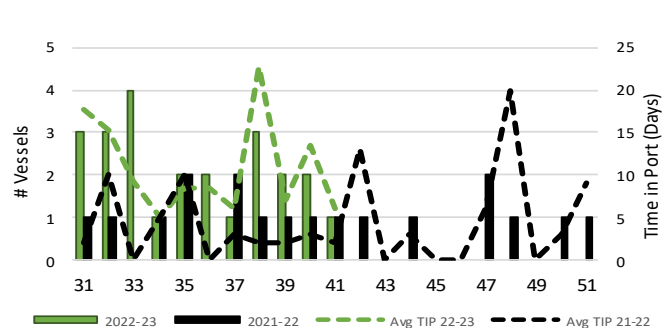
6-C Vessel Lineup at Prince Rupert as of Week 41 2022-23



6-B Vessels Cleared at Vancouver up to Week 41 2022-23



6-D Vessels Cleared at Prince Rupert up to Week 41 2022-23



Note: The 'Time in Port' measure for 6-A and 6-C is calculated as how long each vessel in the lineup has been in port as at Sunday 23:59 of that grain week. The 'Avg Time in Port (TIP)' measure for 6-B and 6-D is the average number of days that all vessels which cleared that week were in port. These measures use vessel data provided by the BC Chamber of Shipping and Pacific Pilotage Authority.