

Grain Monitoring Program

Weekly Performance Update

April 16, 2024

For Grain Week 36 2023-24 CY

April 01, 2024 to April 07, 2024

Summary

	Week 36	Week 35	Var. from Last Year	
1. Stocks in Store ('000 tonnes)				
Country Elevators	↓ 3,567.0	4,002.7	-8%	
% of Working Capacity	66%	74%		
Terminal Elevators	↑ 1,218.2	1,074.6	-19%	
% of Working Capacity	63%	56%		
2. Country Deliveries ('000 tonnes)				
Country Deliveries	↓ 676.3	899.1	-13%	
3. Port Performance (Cars)				
Vancouver Unloads	↑ 6,980	4,669	31%	
Prince Rupert Unloads	↓ 732	934	-31%	
Churchill Unloads	— 0	0	n/a	
Thunder Bay Unloads	↑ 1,820	1,632	-26%	
Total Weekly Unloads	↑ 9,532	7,235	8%	
4-Week Rolling Average	↑ 7,876	7,019	n/a	
Var. to 4-Week Rolling Average	21%	3%	n/a	
YTD Unloads	268,416	258,884	-12%	
Weekly Out-of-Car Time	↓ 15.2%	19.7%	91.3%	
4. Terminal Shipments Year-to-Date ('000 tonnes)				
Vancouver	↑ 19,888.8	19,211.4	-8%	
Prince Rupert	↑ 2,299.2	2,267.2	-34%	
Churchill	— 0.0	0.0	n/a	
Thunder Bay	↑ 4,058.3	3,909.1	-3%	
Total Western Canada	↑ 26,246.3	25,387.7	-11%	
5. Vessels as at Apr 14, 2024				
	Week 37	Week 36	Var. from Last Year	
Vancouver	Vessel Lineup in port	↑ 24	22	0%
	Vessels Cleared	↓ 10	14	-9%
	Vessels Arrived	↑ 12	9	20%
Pr. Rupert	Vessel Lineup in port	— 2	2	-50%
	Vessels Cleared	↓ 0	1	-100%
	Vessels Arrived	↓ 0	2	-100%
Vessels Inbound Apr 15, 2024 to Apr 21, 2024 (Week 38)				
Vancouver	↑ 13			
Prince Rupert	↑ 2			

1. Stocks in Store: (Page 2)

- Country stocks decreased to 3.57 MMT in Week 36 utilizing 66% of the system's working capacity. Space in primary elevators is good.
- Total western port terminal stocks increased to 1.22 MMT in Week 36, utilizing 63% of the working capacity.

2. Country Deliveries: (Page 3)

- Deliveries to primary elevators were 0.68 MMT in Week 36.
- Axle Weight Restrictions (road bans) are in effect across the prairies.

3. Port Performance: (Pages 3-5)

- Total western port unloads were 21% higher than the 4-week moving average and 8% higher than Week 36 last year.
- West Coast unloads were 7,712 cars (Vancouver 6,980 and Prince Rupert 732), 19% higher than the 4-week moving average and 20% higher than Week 36 last year.
- Thunder Bay unloads were 1,820 cars, 32% above the 4-week moving average and 26% lower than Week 36 last year.
- Year-to-date total western port unloads are 12% lower than the same period last year. The corresponding tonnage is 11% lower than the same period last year.
- The total average terminal out-of-car time (OCT) decreased to 15.2% from 19.7% the previous week. The OCT for Week 36 was 17.0% at Vancouver and 9.2% at Thunder Bay. At the time of publishing, Prince Rupert had not reported Week 36 OCT.

5. Shipments: (Page 5)

- Year-to-date Western Canadian shipments from port terminal elevators at Week 36 are 11% lower than the same period last year and 7% higher than the 3-year average.

6. Vessels: (Page 5)

- Vancouver vessel lineup for Week 37 2023-24 increased to 24 vessels (The current one-year average at Vancouver is 20 vessels). Of the 24, 8 were at berth, 9 were anchored at English Bay, 3 were anchored at Burrard Inlet, and 4 were anchored at Vancouver Island.
- Prince Rupert vessel lineup for Week 37 2023-24 remained at 2 vessels (The current one-year average at Prince Rupert is 2 vessels).
- Vessels cleared from Vancouver was 10, and from Prince Rupert was 0 in Week 37 2023-24.

7. Weather:

- The weather section has been removed from the GMP Weekly Performance Update, to be added back in the autumn.

1. Stocks in Store

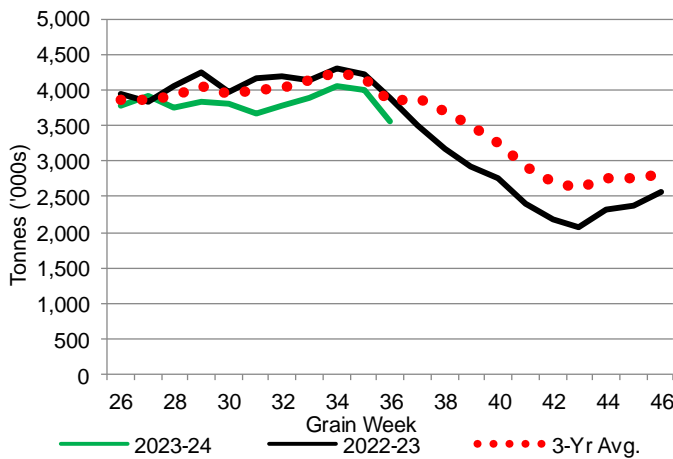
1-A1 Country Stocks ('000 tonnes) – Week 36

	MB	SK	AB	BC	Total
2023-24	742.6	1,764.8	1,040.1	19.5	3,567.0
2022-23	711.4	1,897.0	1,251.2	20.1	3,879.7
3-Yr Avg.	714.6	1,909.0	1,197.0	21.6	3,842.3
Var % - LY	4%	-7%	-17%	-3%	-8%
Var % 3-Yr Avg.	4%	-8%	-13%	-10%	-7%
Storage Capacity	1,606.4	4,235.0	2,458.9	41.2	8,341.5
Estimated Working Capacity	1,044.2	2,752.8	1,598.3	26.8	5,422.1
23-24 % of Wkg Cap	71%	64%	65%	73%	66%

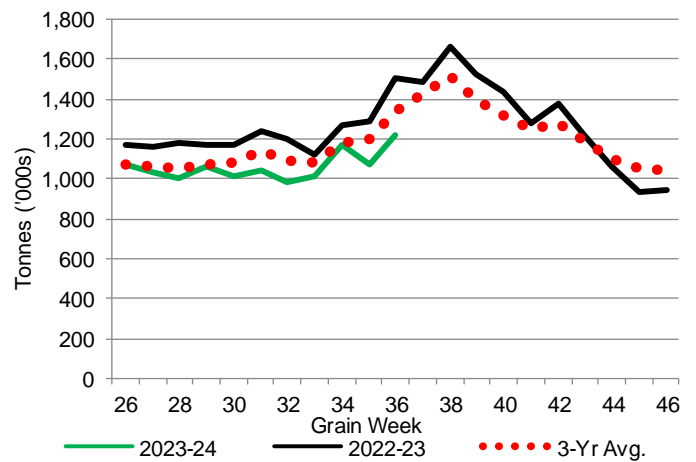
1-B1 Terminal Stocks ('000 tonnes) – Week 36

	VC	PR	West Coast	CH	TB	Total
2023-24	659.9	90.7	750.6	0.7	466.9	1,218.2
2022-23	719.1	164.9	884.0	0.7	624.0	1,508.7
3-Yr Avg.	655.6	133.6	789.2	0.7	545.9	1,335.8
Var % - LY	-8%	-45%	-15%	0%	-25%	-19%
Var % 3-Yr Avg.	1%	-32%	-5%	0%	-14%	-9%
Storage Capacity	1,275.5	209.5	1,485.0	140.0	1,127.5	2,752.5
Estimated Working Capacity	892.9	146.7	1,039.6	98.0	789.2	1,926.8
23-24 % of Wkg Cap	74%	62%	72%	1%	59%	63%

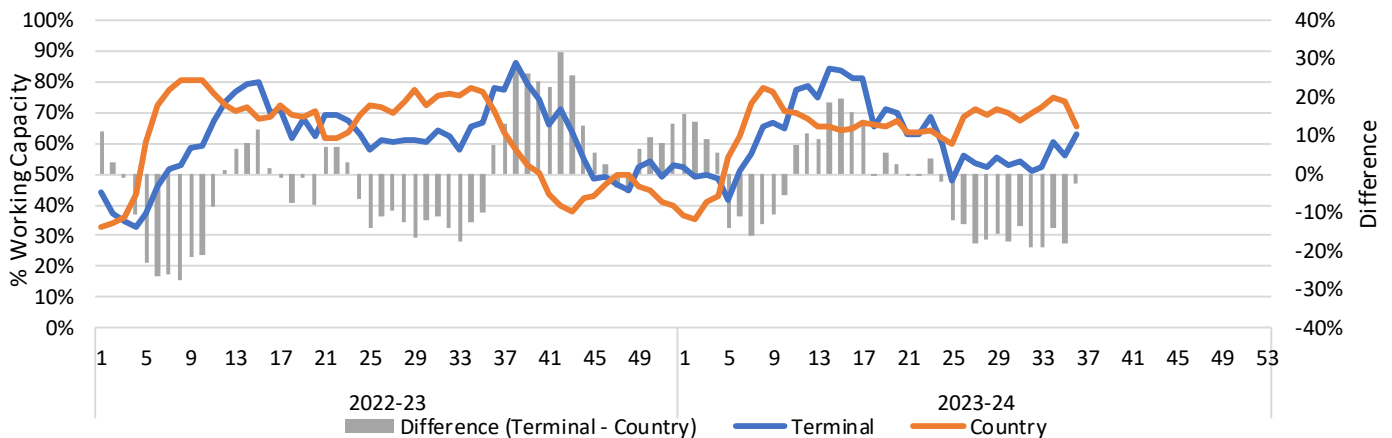
1-A2 Weekly Country Stocks in Store



1-B2 Weekly Terminal Stocks in Store



1-C Weekly Stock Balance

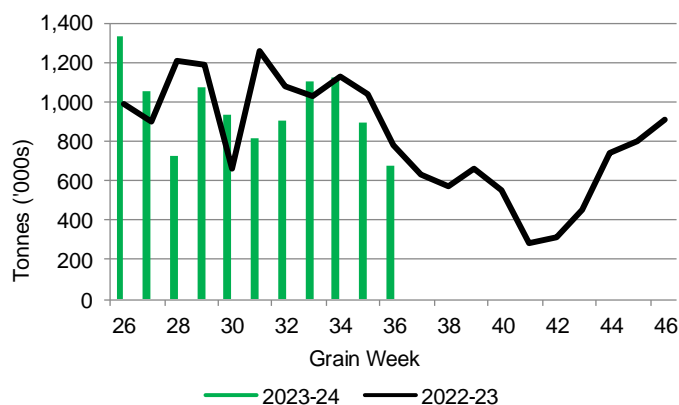


2. Country Deliveries

2-A Country Deliveries ('000 tonnes) – Week 36

	MB	SK	AB	BC	Total
2023-24	168.7	279.8	223.8	4.0	676.3
2022-23	92.3	417.8	262.3	4.3	776.7
4 Wk Avg	178.3	470.2	296.4	4.6	949.4
Var % to Last Year	83%	-33%	-15%	-7%	-13%
Var % To 4 Wk Avg	-5%	-41%	-25%	-13%	-29%

2-B 2023-24 Weekly Country Deliveries



3. Port Performance

3-A Weekly Unloads by Port (Cars) – This Year for Week 36, 4-Week Moving Average and Variances

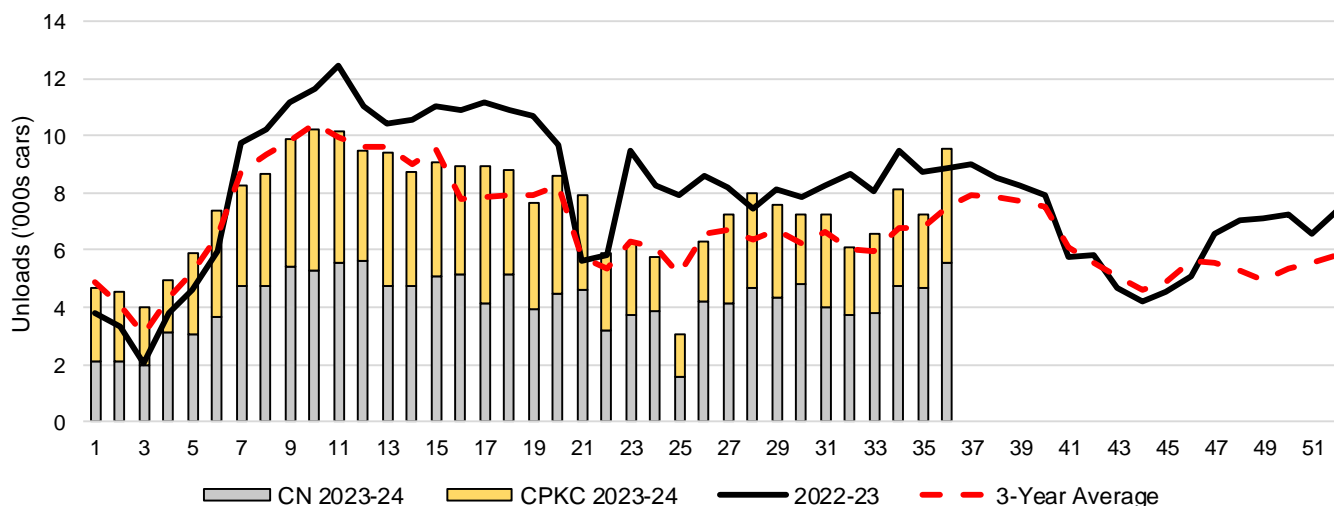
	Vancouver	Prince Rupert	West Coast	Thunder Bay	Churchill	Total
2023-24	6,980	732	7,712	1,820	-	9,532
2022-23	5,343	1,061	6,404	2,443	-	8,847
4-Wk Avg.	5,605	894	6,499	1,377	-	7,876
Var % to Last Year	31%	-31%	20%	-26%	n/a	8%
Var % to 4-Wk Avg.	25%	-18%	19%	32%	n/a	21%

3-B Terminal Unloads by Port – This Year-to-Date as at Week 36 and Variances

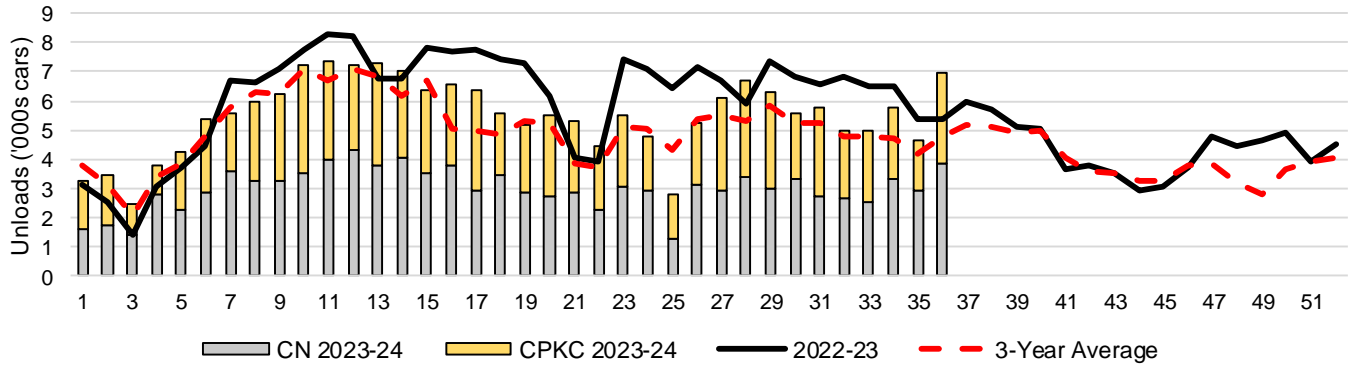
YTD Unloads (cars)	Vancouver	Prince Rupert	West Coast	Thunder Bay	Churchill	Total
2023-24	197,845	23,562	221,407	47,009	-	268,416
2022-23	220,623	36,854	257,477	47,211	-	304,688
3-Yr Avg	183,172	26,487	209,659	45,217	-	254,875
Var % to Last Year	-10%	-36%	-14%	0%	n/a	-12%
Var % to 3-Yr Avg	8%	-11%	6%	4%	n/a	5%

YTD Unloads ('000 tonnes)	Vancouver	Prince Rupert	West Coast	Thunder Bay	Churchill	Total
2023-24	19,144.0	2,286.3	21,430.3	4,544.6	-	25,974.9
2022-23	21,231.5	3,544.8	24,776.3	4,543.3	-	29,319.6
3-Yr Avg.	17,573.6	2,533.5	20,107.2	4,340.2	-	24,447.4
Var % to Last Year	-10%	-36%	-14%	0%	n/a	-11%
Var % to 3-Yr Avg.	9%	-10%	7%	5%	n/a	6%

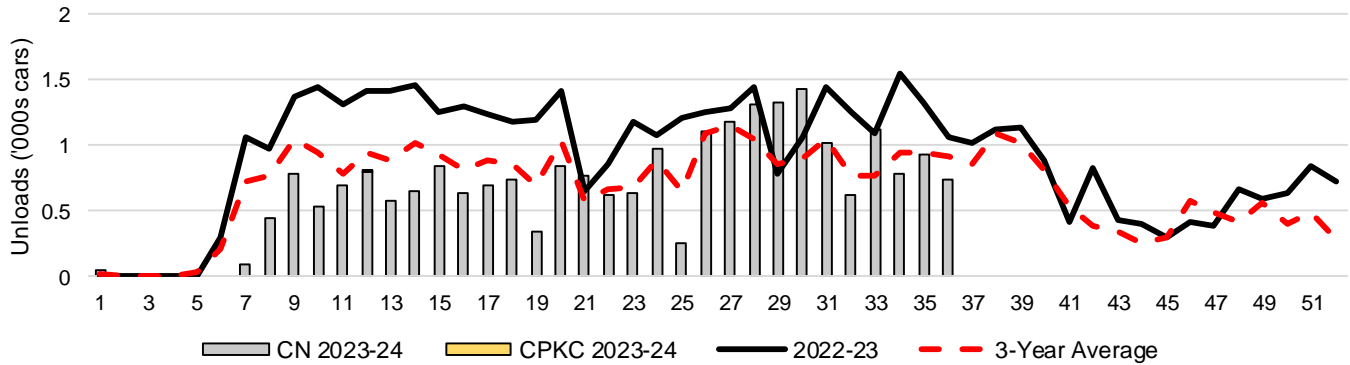
3-C Western Port Terminal Unloads (cars), Total by Carrier, This Year vs. Last Year and the 3-Year Average



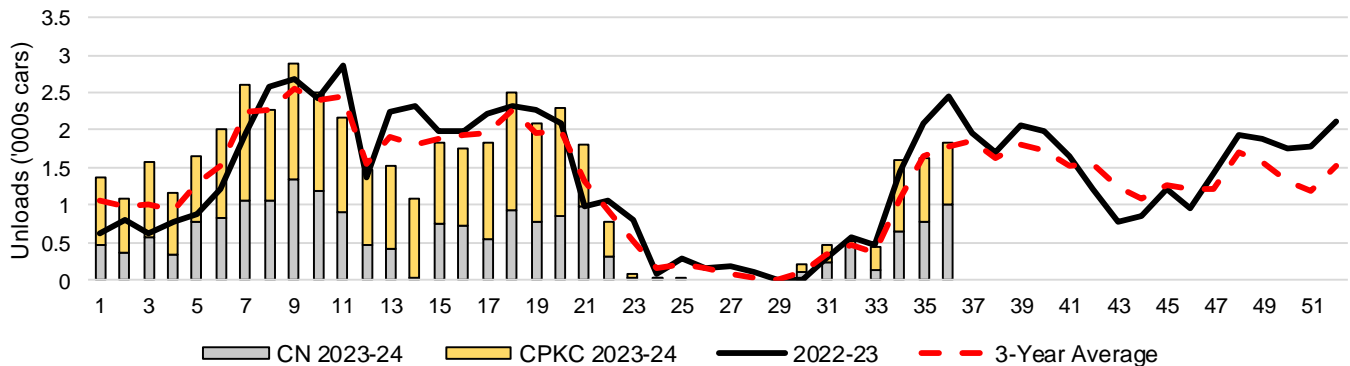
3-D Vancouver Terminal Unloads (cars), Total by Carrier, This Year vs. Last Year and the 3-Year Average



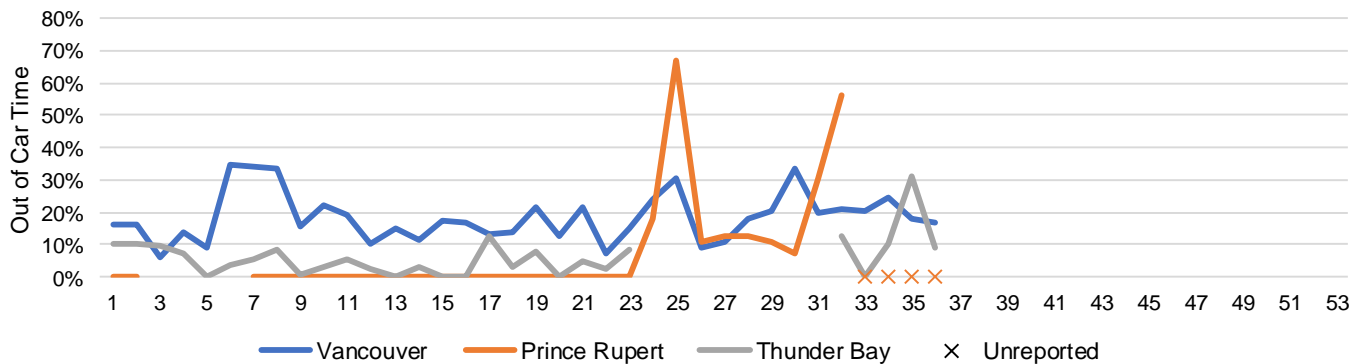
3-E Prince Rupert Terminal Unloads (cars), Total by Carrier, This Year vs. Last Year and the 3-Year Average



3-F Thunder Bay Terminal Unloads (cars), Total by Carrier, This Year vs. Last Year and the 3-Year Average



3-G Weekly Out-of-Car Time (% of hours out-of-cars / total hours working)



Out-of-car time is measured weekly and uses data from terminal elevators on the total number of hours the facilities are open & staffed (including overtime hours) and the corresponding number of hours that terminals have no railcars available to unload. The measure is expressed as a percentage (hours without cars to the total number of hours working).

3-H Monthly Unloads (cars) – This year vs. Last Year and the 3-Year Average to Week 35 2023-24

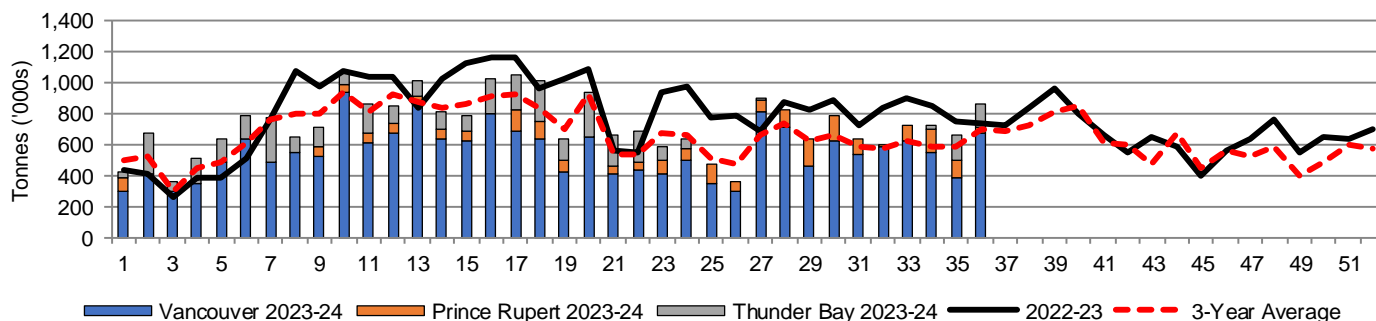
Months	Aug	Sep	Oct	Nov	Dec	Jan	Feb	Mar	Apr	May	Jun	Jul
Weeks	1-5	6-9	10-13	14-18	19-22	23-27	28-31	32-35	36-39	40-44	45-48	49-53
2023-24	24,066	34,250	39,311	44,460	30,025	28,628	30,068	28,076	-	-	-	-
2022-23	17,592	37,081	45,507	54,625	31,875	42,443	31,747	34,971	34,634	28,378	23,280	28,334
3-Yr Avg.	21,619	34,406	39,606	42,112	27,333	30,880	25,933	25,485	31,323	28,894	21,322	21,701
Var % to Last Year	37%	-8%	-14%	-19%	-6%	-33%	-5%	-20%				
Var % to 3-Yr Avg.	11%	0%	-1%	6%	10%	-7%	16%	10%				

4. Shipments

4-A Shipments from Port Terminals ('000 tonnes) – This Year-to-Date as of Week 36 and Variance to Last Year-to-Date

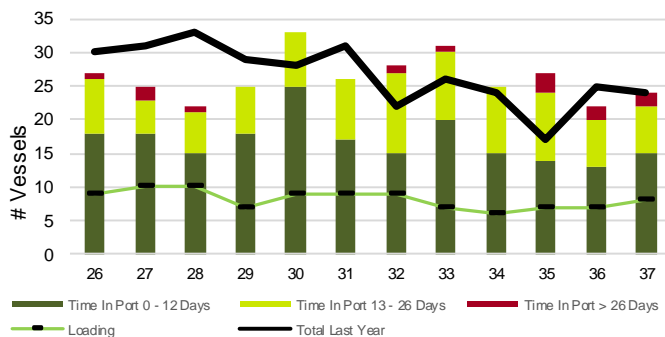
	Vancouver	Prince Rupert	West Coast	Thunder Bay	Churchill	Total
2023-24	19,888.8	2,299.2	22,188.0	4,058.3	-	26,246.3
2022-23	21,723.4	3,455.8	25,179.2	4,179.4	-	29,358.6
3-Yr Avg.	17,934.4	2,470.4	20,404.7	4,013.3	-	24,418.0
Var % to Last Year	-8%	-33%	-12%	-3%	n/a	-11%
Var % to 3-Yr Avg.	11%	-7%	9%	1%	n/a	7%

4-B Weekly Shipments ('000 tonnes) from Port Terminals – This Year vs Last Year and the 3-Year Average

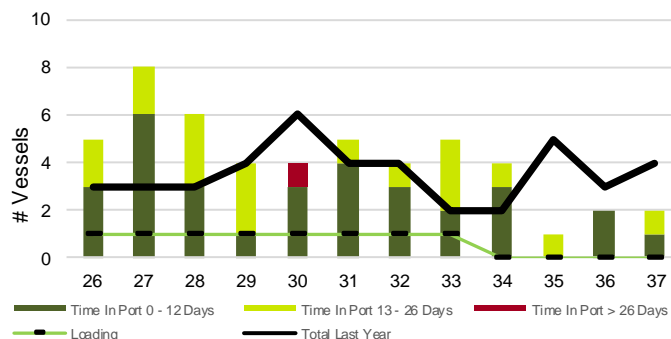


5. Vessels

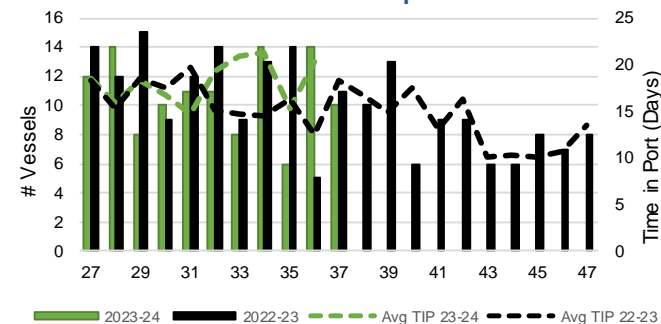
5-A Vessel Lineup at Vancouver as of Week 37 2023-24



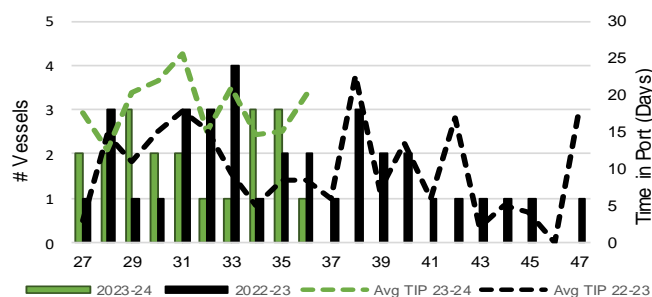
5-C Vessel Lineup at Prince Rupert as of Week 37 2023-24



5-B Vessels Cleared at Vancouver up to Week 37 2023-24



5-D Vessels Cleared at Prince Rupert up to Week 37 2023-24



Note: The 'Time in Port' measure for 6-A and 6-C is calculated as how long each vessel in the lineup has been in port as at Sunday 23:59 of that grain week. The 'Avg Time in Port (TIP)' measure for 6-B and 6-D is the average number of days that all vessels which cleared that week were in port. These measures use vessel data provided by the BC Chamber of Shipping and Pacific Pilotage Authority.