

# Grain Monitoring Program

## Weekly Performance Update

June 04, 2024

For Grain Week 43 2023-24 CY  
May 20, 2024 to May 26, 2024

### Summary

	Week 43	Week 42	Var. from Last Year	
<b>1. Stocks in Store ('000 tonnes)</b>				
Country Elevators	↓ 1,871.7	1,907.8	-10%	
% of Working Capacity	35%	35%		
Terminal Elevators	↓ 1,144.7	1,226.2	-7%	
% of Working Capacity	59%	64%		
<b>2. Country Deliveries ('000 tonnes)</b>				
Country Deliveries	↑ 529.6	427.9	16%	
<b>3. Port Performance (Cars)</b>				
Vancouver Unloads	↓ 5,048	5,846	44%	
Prince Rupert Unloads	↑ 1,004	876	136%	
Churchill Unloads	— 0	0	n/a	
Thunder Bay Unloads	↓ 1,770	2,134	125%	
Total Weekly Unloads	↓ 7,822	8,856	66%	
4-Week Rolling Average	↓ 8,798	9,214	n/a	
Var. to 4-Week Rolling Average	-11%	-4%	n/a	
YTD Unloads	330,607	322,785	-7%	
Weekly Out-of-Car Time	↑ 19.2%	7.5%	3.3%	
<b>4. Terminal Shipments Year-to-Date ('000 tonnes)</b>				
Vancouver	↑ 23,676.4	23,236.9	-6%	
Prince Rupert	↑ 2,831.3	2,755.7	-30%	
Churchill	— 0.0	0.0	n/a	
Thunder Bay	↑ 5,565.5	5,347.4	4%	
Total Western Canada	↑ 32,073.2	31,340.0	-7%	
<b>5. Vessels as at Jun 2, 2024</b>				
	<b>Week 44</b>	<b>Week 43</b>	<b>Var. from Last Year</b>	
Vancouver	Vessel Lineup in port	↓ 11	13	-15%
	Vessels Cleared	↑ 11	8	83%
	Vessels Arrived	↑ 9	6	29%
Pr. Rupert	Vessel Lineup in port	— 2	2	100%
	Vessels Cleared	— 2	2	100%
	Vessels Arrived	— 2	2	100%
<b>Vessels Inbound Jun 03, 2024 to Jun 09, 2024 (Week 45)</b>				
Vancouver	9			
Prince Rupert	1			

### 1. Stocks in Store: (Page 2)

- Country stocks decreased to 1.87 MMT in Week 43 utilizing 35% of the system's working capacity. Space in primary elevators is good.
- Total western port terminal stocks decreased to 1.14 MMT in Week 43, utilizing 59% of the working capacity.

### 2. Country Deliveries: (Page 3)

- Deliveries to primary elevators were 0.53 MMT in Week 43.

### 3. Port Performance: (Pages 3-5)

- Total western port unloads were 11% lower than the 4-week moving average and 66% higher than Week 43 last year.
- West Coast unloads were 6,052 cars (Vancouver 5,048 and Prince Rupert 1,004), 8% lower than the 4-week moving average and 54% higher than Week 43 last year.
- Thunder Bay unloads were 1,770 cars, 19% below the 4-week moving average and 125% higher than Week 43 last year.
- Year-to-date total western port unloads are 7% lower than the same period last year. The corresponding tonnage is 7% lower than the same period last year.
- The total average terminal out-of-car time (OCT) increased to 19.2% from 7.5% the previous week. The OCT for Week 43 was 22.6% at Vancouver and 5.0% at Thunder Bay. At the time of publishing, Prince Rupert had not yet reported Week 43 OCT.

### 5. Shipments: (Page 5)

- Year-to-date Western Canadian shipments from port terminal elevators at Week 43 are 7% lower than the same period last year and 11% higher than the 3-year average.

### 6. Vessels: (Page 5)

- Vancouver vessel lineup for Week 44 2023-24 decreased to 11 vessels (The current one-year average at Vancouver is 20 vessels). Of the 11, 5 were at berth, 6 were anchored at English Bay, 0 were anchored at Burrard Inlet, and 0 were anchored at Vancouver Island.
- Prince Rupert vessel lineup for Week 44 2023-24 remained at 2 vessels (The current one-year average at Prince Rupert is 2 vessels).
- Vessels cleared from Vancouver was 11, and from Prince Rupert was 2 in Week 44 2023-24.

# 1. Stocks in Store

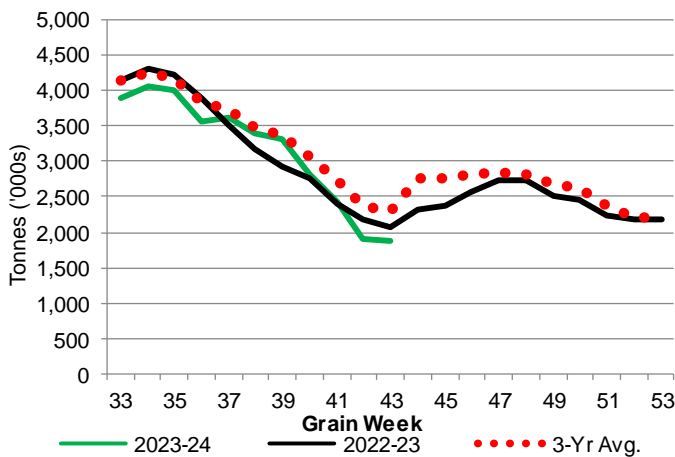
1-A1 Country Stocks ('000 tonnes) – Week 43

	MB	SK	AB	BC	Total
2023-24	376.8	852.0	628.4	14.5	1,871.7
2022-23	440.4	862.2	763.5	15.0	2,081.1
3-Yr Avg.	426.3	1,073.4	770.6	14.4	2,284.6
Var % - LY	-14%	-1%	-18%	-3%	-10%
Var % 3-Yr Avg.	-12%	-21%	-18%	1%	-18%
Storage Capacity	1,606.4	4,235.0	2,458.9	41.2	8,341.5
Estimated Working Capacity	1,044.2	2,752.8	1,598.3	26.8	5,422.1
23-24 % of Wkg Cap	36%	31%	39%	54%	35%

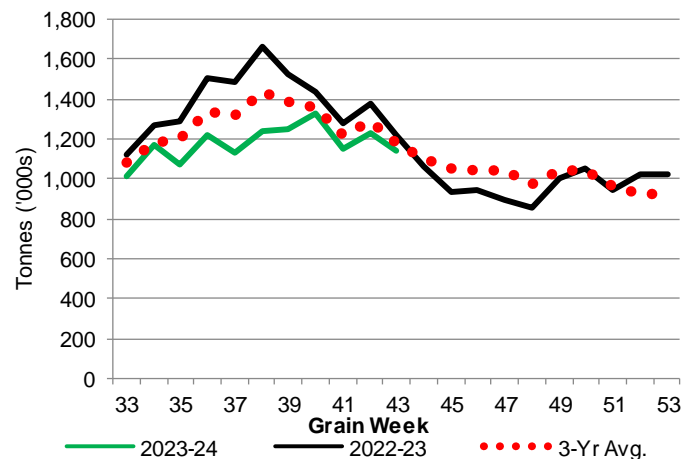
1-B1 Terminal Stocks ('000 tonnes) – Week 43

	VC	PR	West Coast	CH	TB	Total
2023-24	593.7	84.7	678.4	0.7	465.6	1,144.7
2022-23	628.7	120.5	749.2	0.7	473.8	1,223.7
3-Yr Avg.	567.3	102.4	669.7	0.7	508.0	1,178.4
Var % - LY	-6%	-30%	-9%	0%	-2%	-6%
Var % 3-Yr Avg.	5%	-17%	1%	0%	-8%	-3%
Storage Capacity	1,275.5	209.5	1,485.0	140.0	1,127.5	2,752.5
Estimated Working Capacity	892.9	146.7	1,039.6	98.0	789.2	1,926.8
23-24 % of Wkg Cap	66%	58%	65%	1%	59%	59%

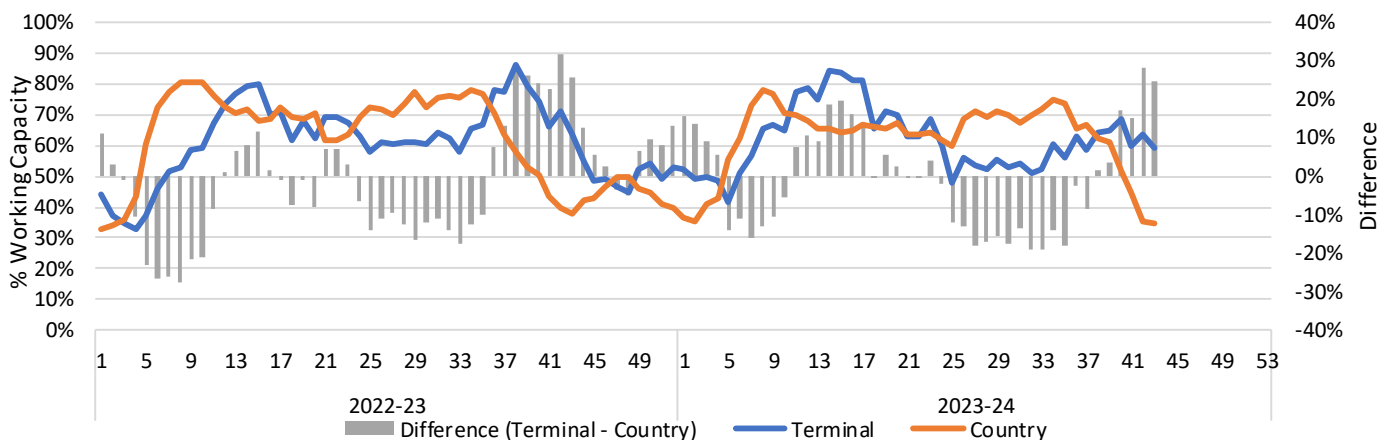
1-A2 Weekly Country Stocks in Store



1-B2 Weekly Terminal Stocks in Store



1-C Weekly Stock Balance

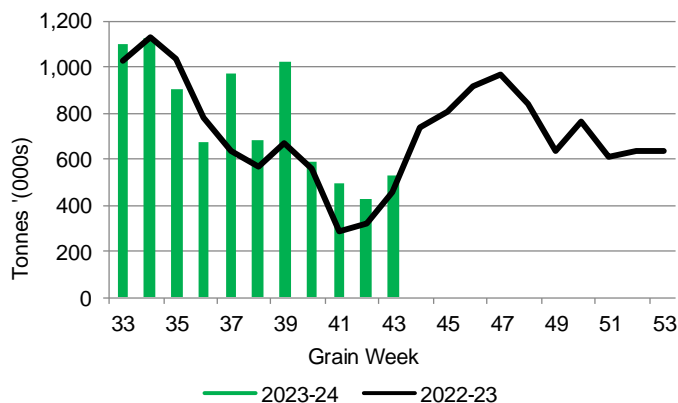


## 2. Country Deliveries

2-A Country Deliveries ('000 tonnes) – Week 43

	MB	SK	AB	BC	Total
2023-24	76.5	240.5	208.6	4.0	529.6
2022-23	64.1	174.3	213.8	3.2	455.4
4 Wk Avg	111.8	218.3	174.9	5.0	510.0
Var % to Last Year	19%	38%	-2%	25%	16%
Var % To 4 Wk Avg	-32%	10%	19%	-20%	4%

2-B 2023-24 Weekly Country Deliveries



## 3. Port Performance

3-A Weekly Unloads by Port (Cars) – This Year for Week 43, 4-Week Moving Average and Variances

	Vancouver	Prince Rupert	West Coast	Thunder Bay	Churchill	Total
2023-24	5,048	1,004	6,052	1,770	-	7,822
2022-23	3,501	426	3,927	785	-	4,712
4-Wk Avg.	5,681	932	6,613	2,185	-	8,798
Var % to Last Year	44%	136%	54%	125%	n/a	66%
Var % to 4-Wk Avg.	-11%	8%	-8%	-19%	n/a	-11%

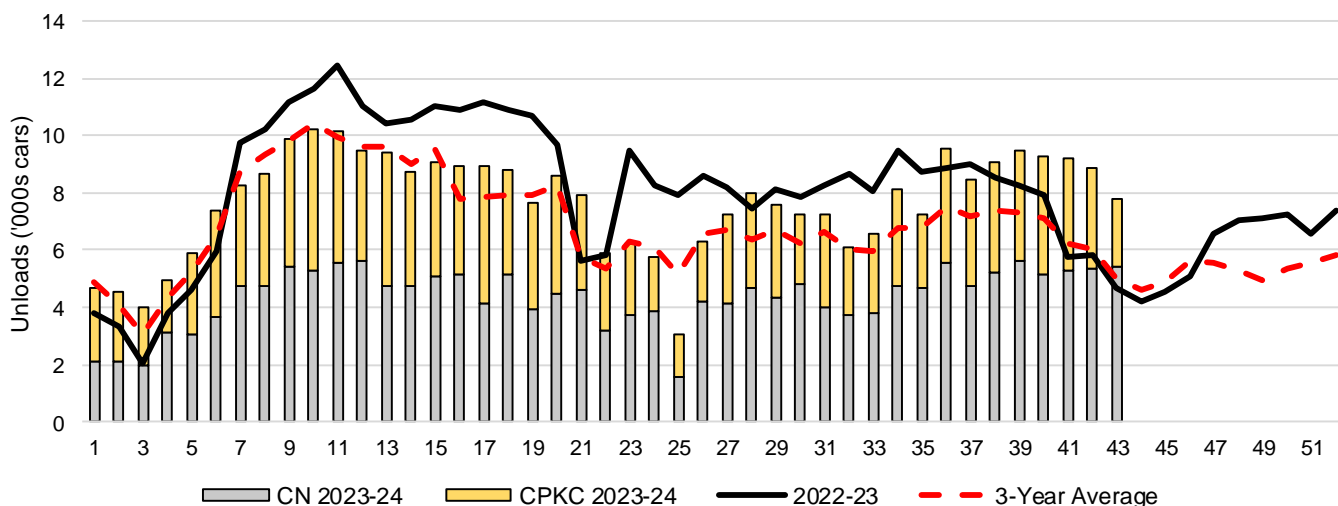
3-B Terminal Unloads by Port – This Year-to-Date as at Week 43 and Variances

YTD Unloads (cars)	Vancouver	Prince Rupert	West Coast	Thunder Bay	Churchill	Total
2023-24	238,267	29,505	267,772	62,835	-	330,607
2022-23	253,417	42,683	296,100	58,568	-	354,668
3-Yr Avg	212,666	31,401	244,067	56,998	-	301,064
Var % to Last Year	-6%	-31%	-10%	7%	n/a	-7%
Var % to 3-Yr Avg	12%	-6%	10%	10%	n/a	10%

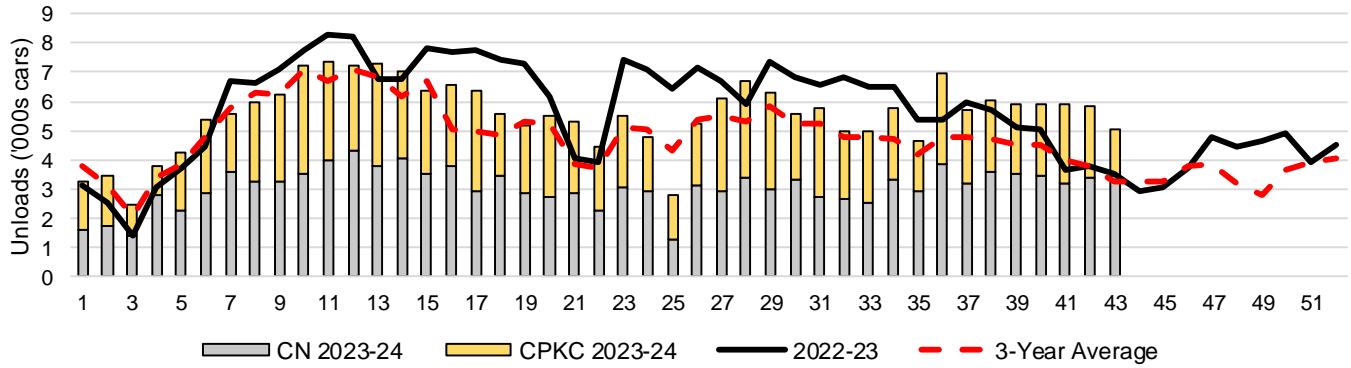
  

YTD Unloads ('000 tonnes)	Vancouver	Prince Rupert	West Coast	Thunder Bay	Churchill	Total
2023-24	23,008.7	2,860.5	25,869.2	6,073.3	-	31,942.5
2022-23	24,460.7	4,099.8	28,560.5	5,646.0	-	34,206.5
3-Yr Avg.	20,424.8	3,006.3	23,431.1	5,483.6	-	28,914.7
Var % to Last Year	-6%	-30%	-9%	8%	n/a	-7%
Var % to 3-Yr Avg.	13%	-5%	10%	11%	n/a	10%

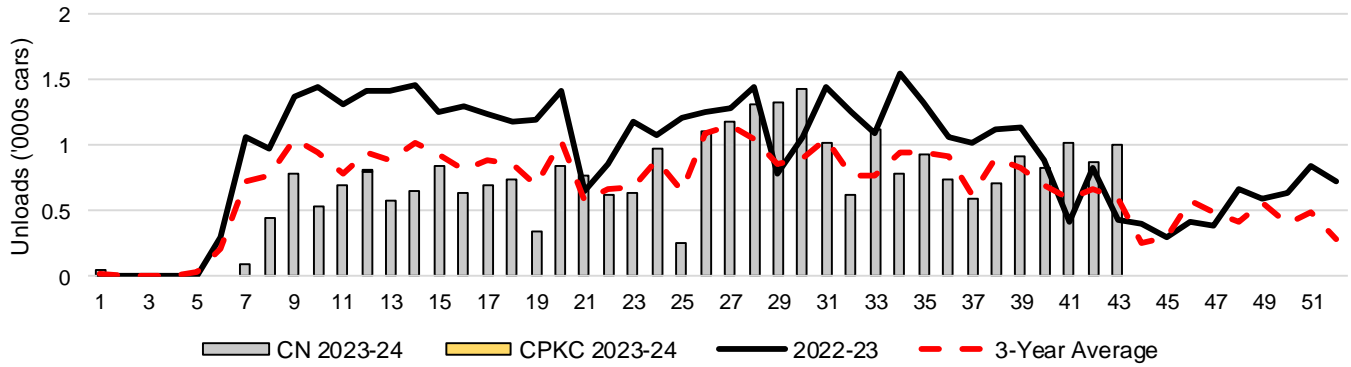
3-C Western Port Terminal Unloads (cars), Total by Carrier, This Year vs. Last Year and the 3-Year Average



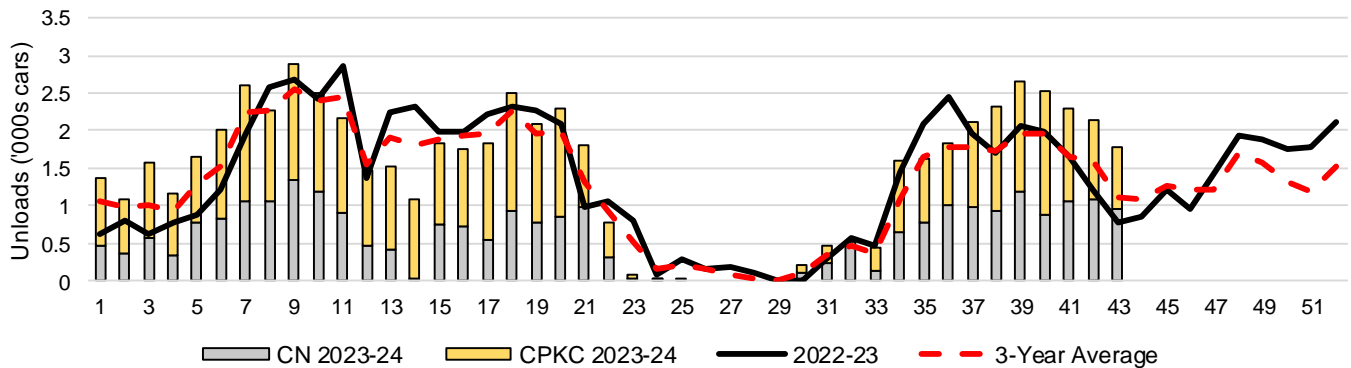
### 3-D Vancouver Terminal Unloads (cars), Total by Carrier, This Year vs. Last Year and the 3-Year Average



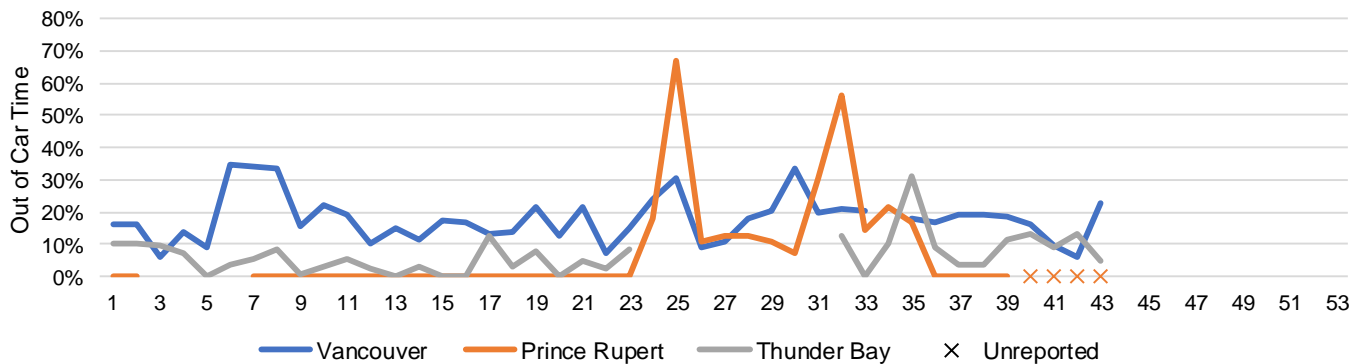
### 3-E Prince Rupert Terminal Unloads (cars), Total by Carrier, This Year vs. Last Year and the 3-Year Average



### 3-F Thunder Bay Terminal Unloads (cars), Total by Carrier, This Year vs. Last Year and the 3-Year Average



### 3-G Weekly Out-of-Car Time (% of hours out-of-cars / total hours working)



Out-of-car time is measured weekly and uses data from terminal elevators on the total number of hours the facilities are open & staffed (including overtime hours) and the corresponding number of hours that terminals have no railcars available to unload. The measure is expressed as a percentage (hours without cars to the total number of hours working).

### 3-H Monthly Unloads (cars) – This year vs. Last Year and the 3-Year Average to Week 39 2023-24

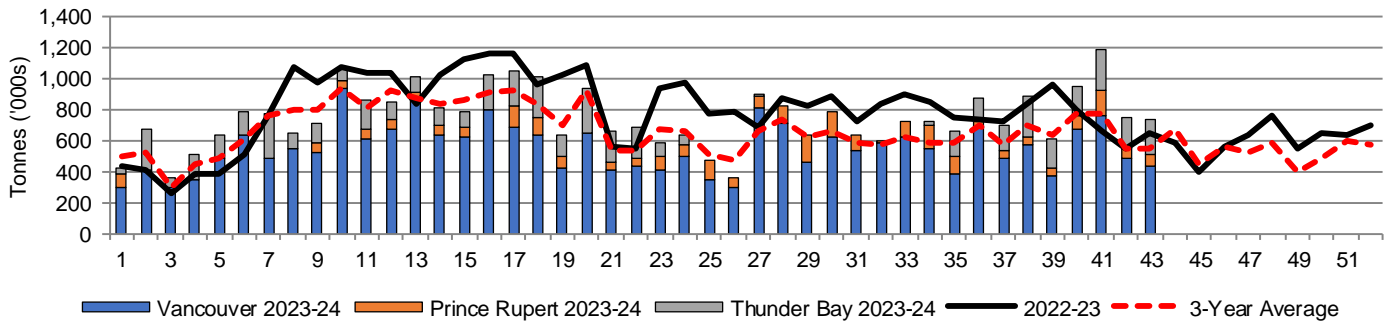
Months	Aug	Sep	Oct	Nov	Dec	Jan	Feb	Mar	Apr	May	Jun	Jul
Weeks	1-5	6-9	10-13	14-18	19-22	23-27	28-31	32-35	36-39	40-44	45-48	49-53
2023-24	24,066	34,250	39,311	44,460	30,025	28,628	30,071	28,076	36,529	-	-	-
2022-23	17,592	37,081	45,507	54,625	31,875	42,443	31,747	34,971	34,634	28,378	23,280	28,334
3-Yr Avg.	21,619	34,406	39,606	42,112	27,333	30,880	25,934	25,485	29,334	28,894	21,322	21,701
Var % to Last Year	37%	-8%	-14%	-19%	-6%	-33%	-5%	-20%	5%			
Var % to 3-Yr Avg.	11%	0%	-1%	6%	10%	-7%	16%	10%	25%			

## 4. Shipments

### 4-A Shipments from Port Terminals ('000 tonnes) – This Year-to-Date as at Week 43 and Variance to Last Year-to-Date

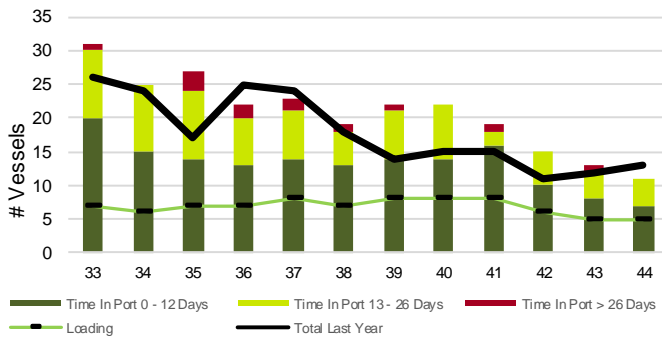
	Vancouver	Prince Rupert	West Coast	Thunder Bay	Churchill	Total
2023-24	23,676.4	2,831.3	26,507.7	5,565.5	-	32,073.2
2022-23	25,069.8	4,060.4	29,130.2	5,379.4	-	34,509.6
3-Yr Avg.	20,810.6	2,961.3	23,771.9	5,174.5	-	28,946.4
Var % to Last Year	-6%	-30%	-9%	3%	n/a	-7%
Var % to 3-Yr Avg.	14%	-4%	12%	8%	n/a	11%

### 4-B Weekly Shipments ('000 tonnes) from Port Terminals – This Year vs Last Year and the 3-Year Average

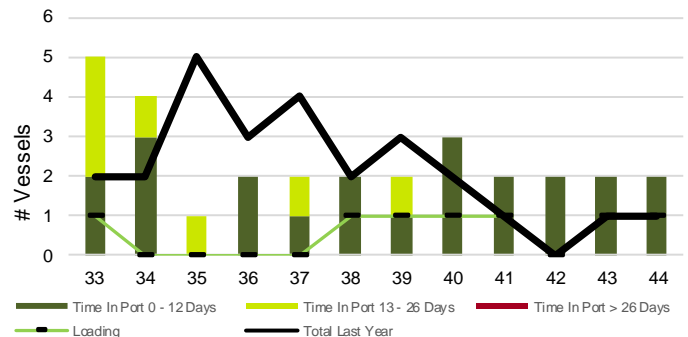


## 5. Vessels

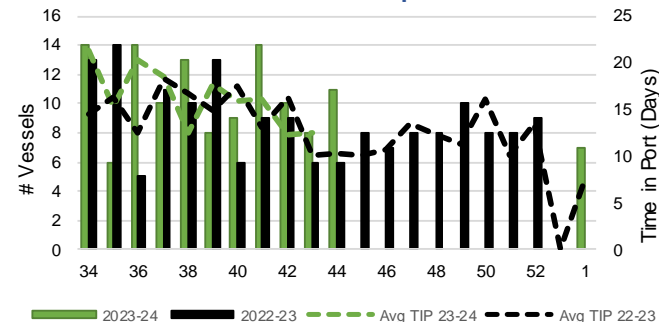
### 5-A Vessel Lineup at Vancouver as of Week 44 2023-24



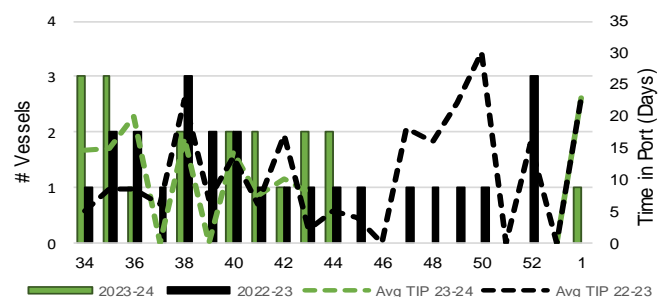
### 5-C Vessel Lineup at Prince Rupert as of Week 44 2023-24



### 5-B Vessels Cleared at Vancouver up to Week 44 2023-24



### 5-D Vessels Cleared at Prince Rupert up to Week 44 2023-24



Note: The 'Time in Port' measure for 6-A and 6-C is calculated as how long each vessel in the lineup has been in port as at Sunday 23:59 of that grain week. The 'Avg Time in Port (TIP)' measure for 6-B and 6-D is the average number of days that all vessels which cleared that week were in port. These measures use vessel data provided by the BC Chamber of Shipping and Pacific Pilotage Authority.