

Grain Monitoring Program

Weekly Performance Update

June 25, 2024

For Grain Week 46 2023-24 CY
June 10, 2024 to June 16, 2024

Summary

	Week 46	Week 45	Var. from Last Year	
1. Stocks in Store ('000 tonnes)				
Country Elevators	↑ 2,558.5	2,446.7	0%	
% of Working Capacity	47%	45%		
Terminal Elevators	↑ 1,168.5	949.4	24%	
% of Working Capacity	61%	49%		
2. Country Deliveries ('000 tonnes)				
Country Deliveries	↓ 982.2	1,088.7	8%	
3. Port Performance (Cars)				
Vancouver Unloads	↑ 5,558	3,269	50%	
Prince Rupert Unloads	↑ 742	735	79%	
Churchill Unloads	— 0	0	n/a	
Thunder Bay Unloads	↑ 2,124	1,696	121%	
Total Weekly Unloads	↑ 8,424	5,700	66%	
4-Week Rolling Average	↓ 6,858	6,966	n/a	
Var. to 4-Week Rolling Average	23%	-18%	n/a	
YTD Unloads	350,214	341,790	-5%	
Weekly Out-of-Car Time	↓ 11.7%	14.7%	-14.6%	
4. Terminal Shipments Year-to-Date ('000 tonnes)				
Vancouver	↑ 24,939.5	24,486.8	-4%	
Prince Rupert	— 2,995.8	2,995.8	-28%	
Churchill	— 0.0	0.0	n/a	
Thunder Bay	↑ 6,152.3	5,907.1	6%	
Total Western Canada	↑ 34,087.6	33,389.7	-5%	
5. Vessels as at Jun 23, 2024				
	Week 47	Week 46	Var. from Last Year	
Vancouver	Vessel Lineup in port	↓ 14	16	-13%
	Vessels Cleared	↑ 12	5	50%
	Vessels Arrived	↑ 10	8	25%
Pr. Rupert	Vessel Lineup in port	— 1	1	-67%
	Vessels Cleared	— 1	1	0%
	Vessels Arrived	↑ 1	0	n/a
Vessels Inbound Jun 24, 2024 to Jun 30, 2024 (Week 48)				
Vancouver	9			
Prince Rupert	2			

1. Stocks in Store: (Page 2)

- Country stocks increased to 2.56 MMT in Week 46 utilizing 47% of the system's working capacity. Space in primary elevators is good.
- Total western port terminal stocks increased to 1.17 MMT in Week 46, utilizing 61% of the working capacity.

2. Country Deliveries: (Page 3)

- Deliveries to primary elevators were 0.98 MMT in Week 46.

3. Port Performance: (Pages 3-5)

- Total western port unloads were 23% higher than the 4-week moving average and 66% higher than Week 46 last year.
- West Coast unloads were 6,300 cars (Vancouver 5,558 and Prince Rupert 742), 23% higher than the 4-week moving average and 53% higher than Week 46 last year.
- Thunder Bay unloads were 2,124 cars, 24% higher than the 4-week moving average and 121% higher than Week 46 last year.
- Year-to-date total western port unloads are 5% lower than the same period last year. The corresponding tonnage is 5% lower than the same period last year.
- The total average terminal out-of-car time (OCT) decreased to 11.7% from 14.7% the previous week. The OCT for Week 46 was 13.8% at Vancouver and 4.3% at Thunder Bay. At the time of publishing, Prince Rupert had not yet reported Week 46 OCT.

5. Shipments: (Page 5)

- Year-to-date Western Canadian shipments from port terminal elevators at Week 46 are 5% lower than the same period last year and 12% higher than the 3-year average.

6. Vessels: (Page 5)

- Vancouver vessel lineup for Week 47 2023-24 decreased to 14 vessels (The current one-year average at Vancouver is 20 vessels). Of the 14, 4 were at berth, 8 were anchored at English Bay, 1 was anchored at Burrard Inlet, and 1 was anchored at Vancouver Island.
- Prince Rupert vessel lineup for Week 47 2023-24 remained at 1 vessel (The current one-year average at Prince Rupert is 2 vessels).
- Vessels cleared from Vancouver was 12 and from Prince Rupert was 1 in Week 47 2023-24.

1. Stocks in Store

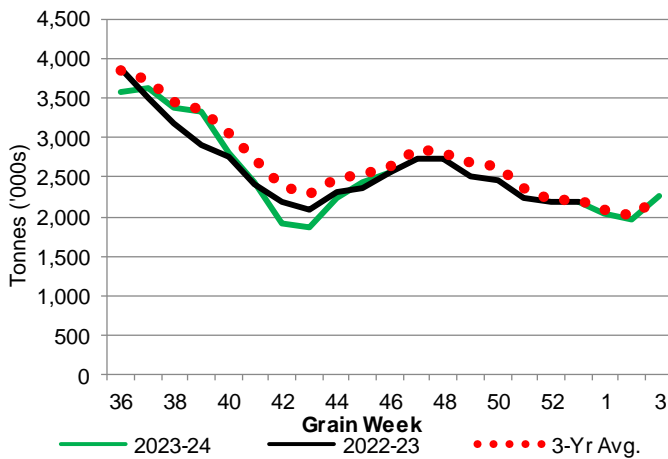
1-A1 Country Stocks ('000 tonnes) – Week 46

	MB	SK	AB	BC	Total
2023-24	467.8	1,282.8	800.3	7.6	2,558.5
2022-23	542.6	1,248.1	744.3	19.9	2,554.9
3-Yr Avg.	466.3	1,330.8	812.9	13.3	2,623.3
Var % - LY	-14%	3%	8%	-62%	0%
Var % 3-Yr Avg.	0%	-4%	-2%	-43%	-2%
Storage Capacity	1,610.0	4,224.4	2,460.4	39.7	8,334.5
Estimated Working Capacity	1,046.5	2,745.9	1,599.2	25.8	5,417.4
23-24 % of Wkg Cap	45%	47%	50%	29%	47%

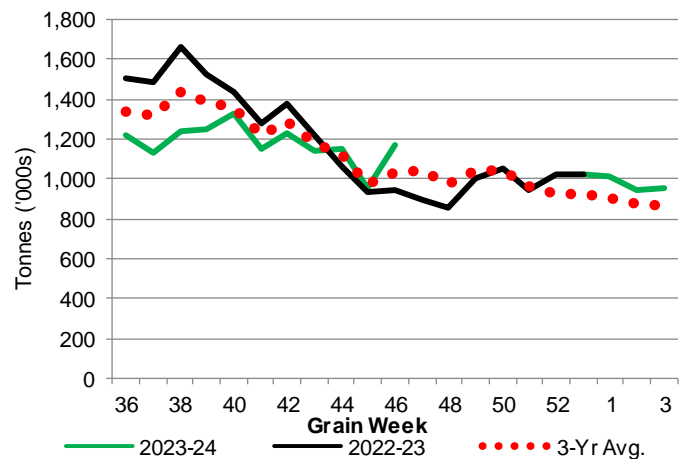
1-B1 Terminal Stocks ('000 tonnes) – Week 46

	VC	PR	West Coast	CH	TB	Total
2023-24	608.4	121.0	729.4	0.7	438.4	1,168.5
2022-23	551.8	65.7	617.5	0.7	325.3	943.5
3-Yr Avg.	564.1	102.1	666.2	0.5	367.7	1,034.3
Var % - LY	10%	84%	18%	0%	35%	24%
Var % 3-Yr Avg.	8%	19%	9%	40%	19%	13%
Storage Capacity	1,275.5	209.5	1,485.0	140.0	1,127.5	2,752.5
Estimated Working Capacity	892.9	146.7	1,039.6	98.0	789.2	1,926.8
23-24 % of Wkg Cap	68%	82%	70%	1%	56%	61%

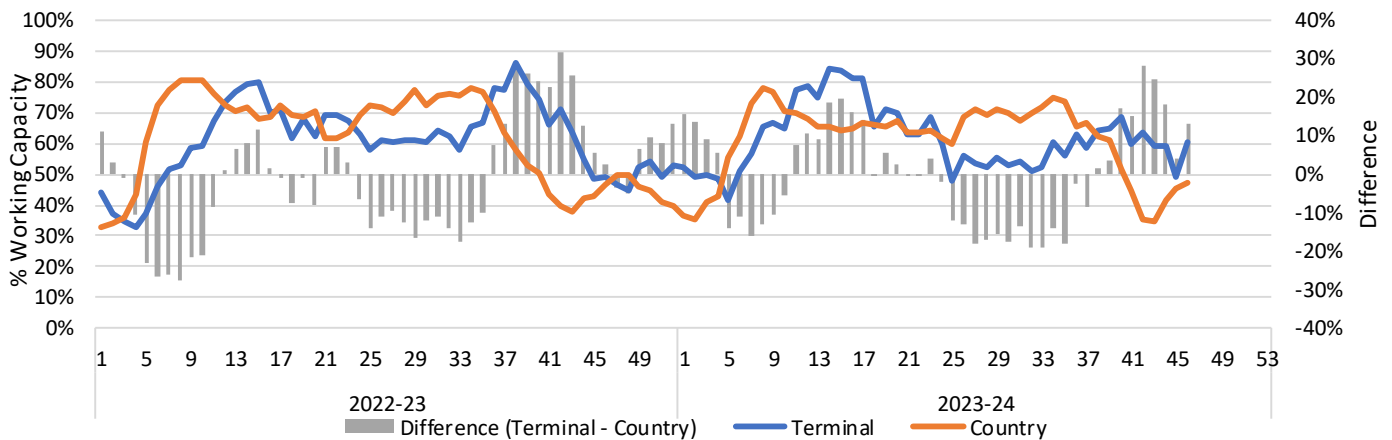
1-A2 Weekly Country Stocks in Store



1-B2 Weekly Terminal Stocks in Store



1-C Weekly Stock Balance

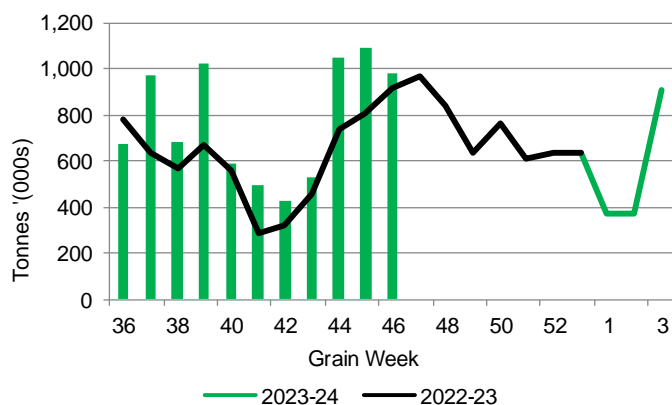


2. Country Deliveries

2-A Country Deliveries ('000 tonnes) – Week 46

	MB	SK	AB	BC	Total
2023-24	164.5	529.5	284.2	4.0	982.2
2022-23	175.3	529.1	205.2	4.1	913.7
4 Wk Avg	156.0	462.9	288.3	4.3	911.4
Var % to Last Year	-6%	0%	39%	-2%	8%
Var % To 4 Wk Avg	5%	14%	-1%	-7%	8%

2-B 2023-24 Weekly Country Deliveries



3. Port Performance

3-A Weekly Unloads by Port (Cars) – This Year for Week 46, 4-Week Moving Average and Variances

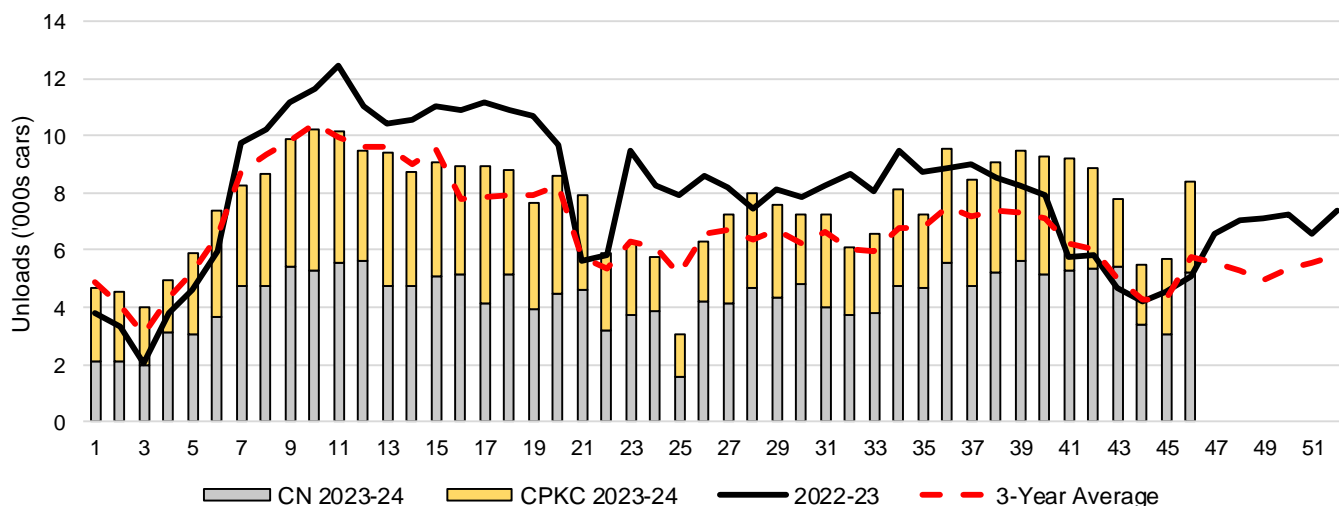
	Vancouver	Prince Rupert	West Coast	Thunder Bay	Churchill	Total
2023-24	5,558	742	6,300	2,124	-	8,424
2022-23	3,694	414	4,108	960	-	5,068
4-Wk Avg.	4,383	756	5,139	1,719	-	6,858
Var % to Last Year	50%	79%	53%	121%	n/a	66%
Var % to 4-Wk Avg.	27%	-2%	23%	24%	n/a	23%

3-B Terminal Unloads by Port – This Year-to-Date as at Week 46 and Variances

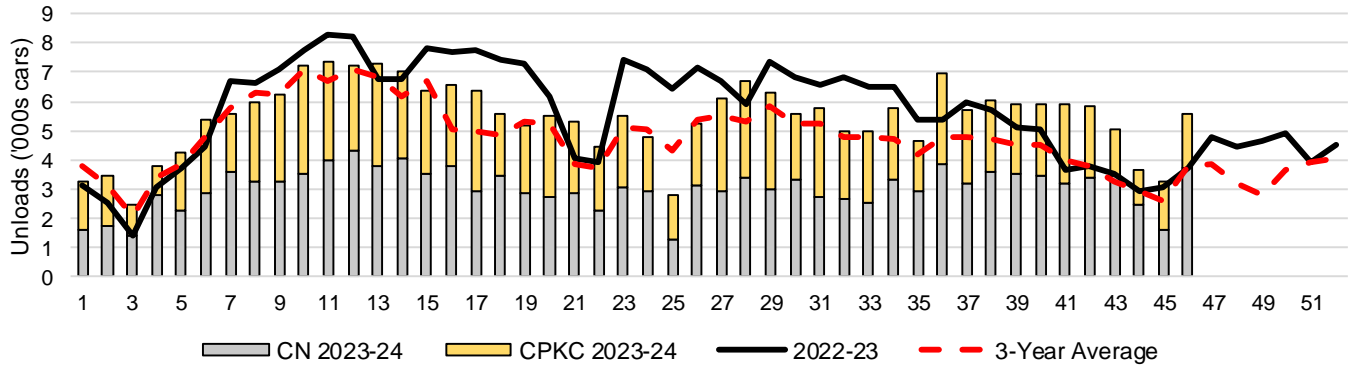
YTD Unloads (cars)	Vancouver	Prince Rupert	West Coast	Thunder Bay	Churchill	Total
2023-24	250,749	31,523	282,272	67,942	-	350,214
2022-23	263,094	43,795	306,889	61,599	-	368,488
3-Yr Avg	221,953	32,805	254,758	60,662	-	315,420
Var % to Last Year	-5%	-28%	-8%	10%	n/a	-5%
Var % to 3-Yr Avg	13%	-4%	11%	12%	n/a	11%

YTD Unloads ('000 tonnes)	Vancouver	Prince Rupert	West Coast	Thunder Bay	Churchill	Total
2023-24	24,194.4	3,048.8	27,243.2	6,566.4	-	33,809.6
2022-23	25,419.0	4,206.3	29,625.3	5,943.6	-	35,568.9
3-Yr Avg.	21,321.1	3,137.6	24,458.7	5,840.0	-	30,298.7
Var % to Last Year	-5%	-28%	-8%	10%	n/a	-5%
Var % to 3-Yr Avg.	13%	-3%	11%	12%	n/a	12%

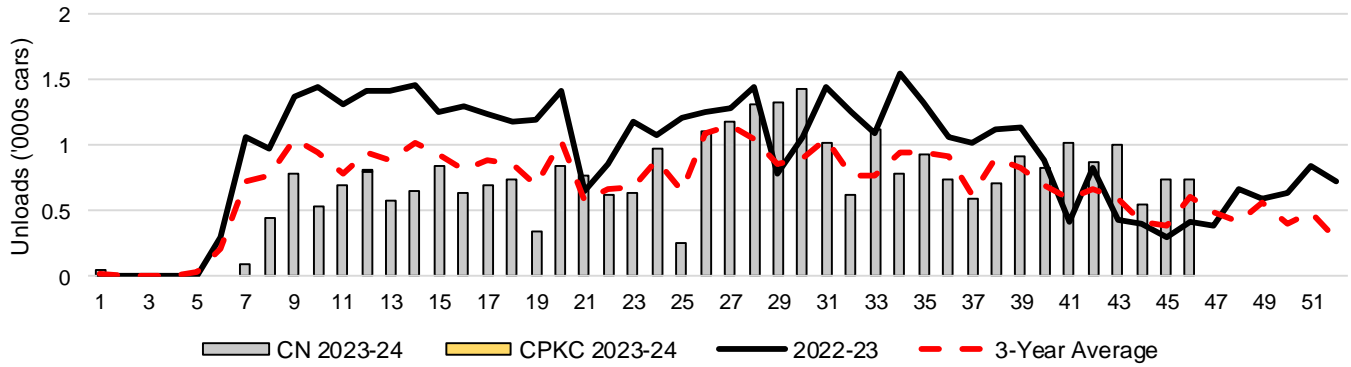
3-C Western Port Terminal Unloads (cars), Total by Carrier, This Year vs. Last Year and the 3-Year Average



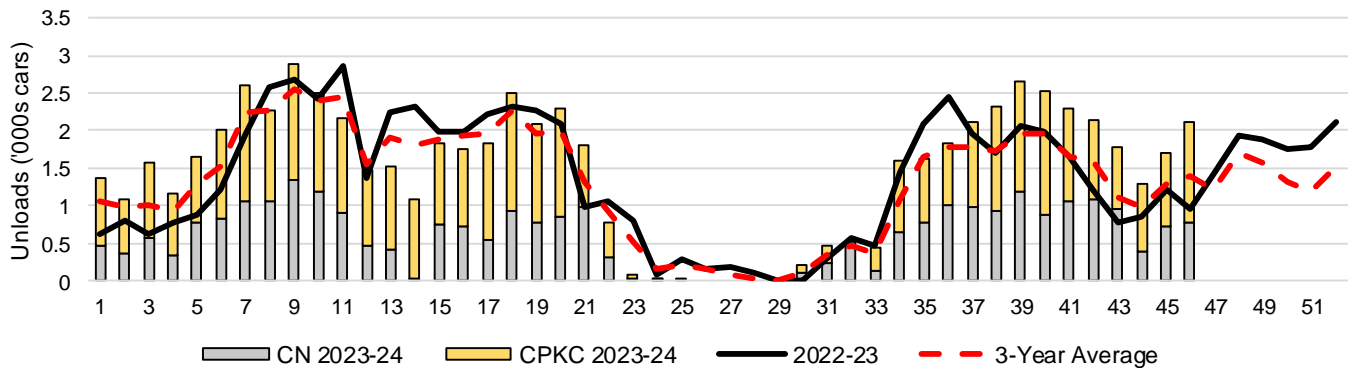
3-D Vancouver Terminal Unloads (cars), Total by Carrier, This Year vs. Last Year and the 3-Year Average



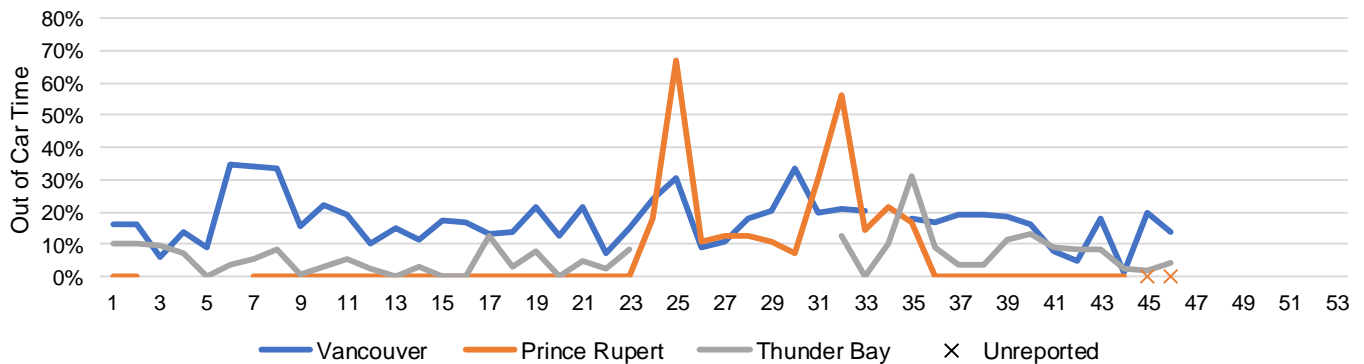
3-E Prince Rupert Terminal Unloads (cars), Total by Carrier, This Year vs. Last Year and the 3-Year Average



3-F Thunder Bay Terminal Unloads (cars), Total by Carrier, This Year vs. Last Year and the 3-Year Average



3-G Weekly Out-of-Car Time (% of hours out-of-cars / total hours working)



Out-of-car time is measured weekly and uses data from terminal elevators on the total number of hours the facilities are open & staffed (including overtime hours) and the corresponding number of hours that terminals have no railcars available to unload. The measure is expressed as a percentage (hours without cars to the total number of hours working).

3-H Monthly Unloads (cars) – This year vs. Last Year and the 3-Year Average to Week 44 2023-24

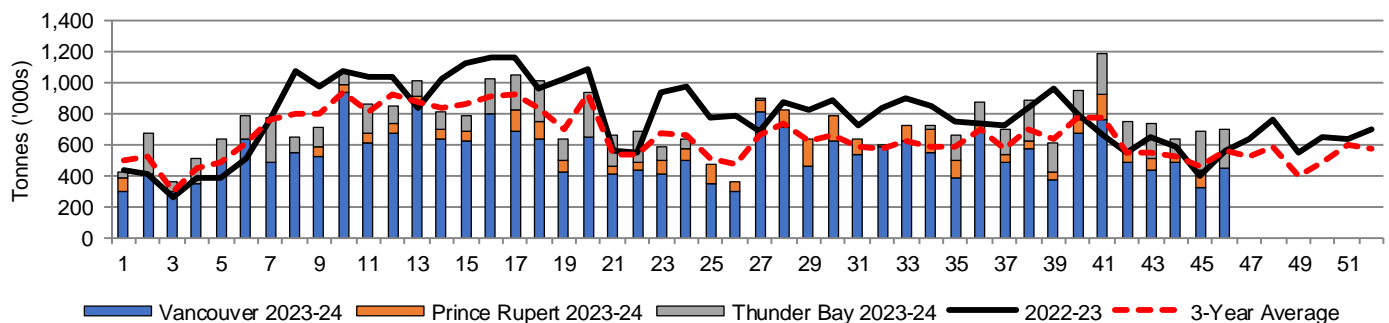
Months	Aug	Sep	Oct	Nov	Dec	Jan	Feb	Mar	Apr	May	Jun	Jul
Weeks	1-5	6-9	10-13	14-18	19-22	23-27	28-31	32-35	36-39	40-44	45-48	49-53
2023-24	24,066	34,250	39,311	44,460	30,025	28,628	30,071	28,076	36,528	40,675	-	-
2022-23	17,592	37,081	45,507	54,625	31,875	42,443	31,747	34,971	34,634	28,378	23,280	28,334
3-Yr Avg.	21,619	34,406	39,606	42,112	27,333	30,880	25,934	25,485	29,334	28,645	21,322	21,701
Var % to Last Year	37%	-8%	-14%	-19%	-6%	-33%	-5%	-20%	5%	43%		
Var % to 3-Yr Avg.	11%	0%	-1%	6%	10%	-7%	16%	10%	25%	42%		

4. Shipments

4-A Shipments from Port Terminals ('000 tonnes) – This Year-to-Date as at Week 46 and Variance to Last Year-to-Date

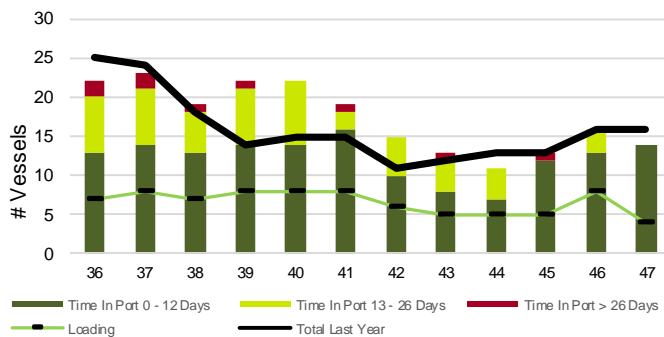
	Vancouver	Prince Rupert	West Coast	Thunder Bay	Churchill	Total
2023-24	24,939.5	2,995.8	27,935.3	6,152.3	-	34,087.6
2022-23	26,030.6	4,183.2	30,213.8	5,831.5	-	36,045.3
3-Yr Avg.	21,723.6	3,077.7	24,801.3	5,696.9	-	30,498.2
Var % to Last Year		-4%	-28%	6%	n/a	-5%
Var % to 3-Yr Avg.		15%	-3%	8%	n/a	12%

4-B Weekly Shipments ('000 tonnes) from Port Terminals – This Year vs Last Year and the 3-Year Average

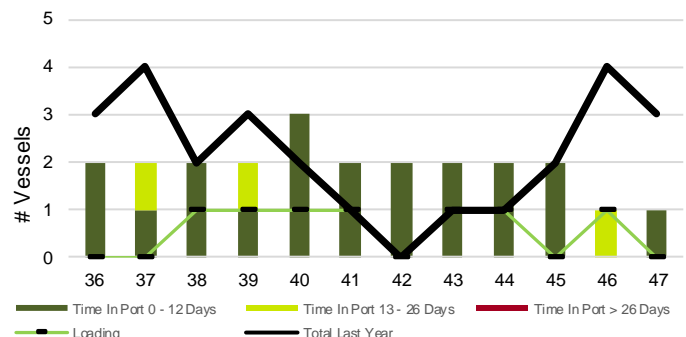


5. Vessels

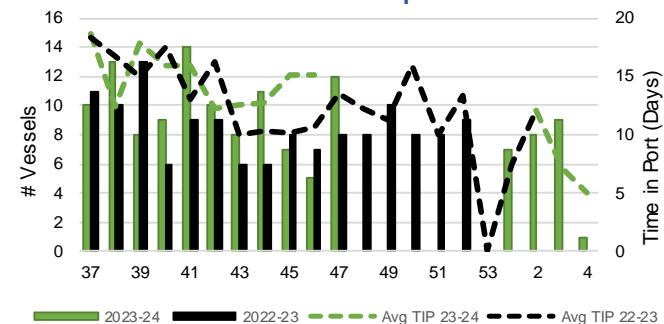
5-A Vessel Lineup at Vancouver as of Week 47 2023-24



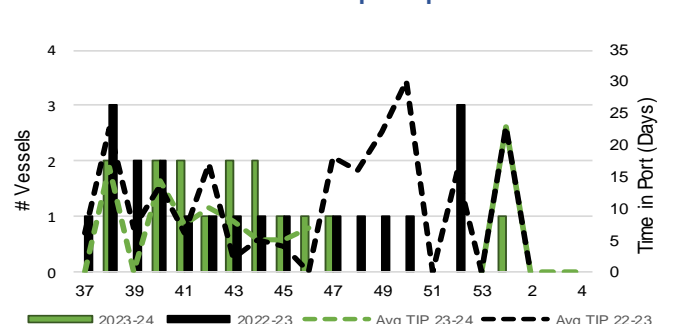
5-C Vessel Lineup at Prince Rupert as of Week 47 2023-24



5-B Vessels Cleared at Vancouver up to Week 47 2023-24



5-D Vessels Cleared at Prince Rupert up to Week 47 2023-24



Note: The 'Time in Port' measure for 6-A and 6-C is calculated as how long each vessel in the lineup has been in port as at Sunday 23:59 of that grain week. The 'Avg Time in Port (TIP)' measure for 6-B and 6-D is the average number of days that all vessels which cleared that week were in port. These measures use vessel data provided by the BC Chamber of Shipping and Pacific Pilotage Authority.