

Grain Monitoring Program

Weekly Performance Update

July 02, 2024

For Grain Week 47 2023-24 CY
June 17, 2024 to June 23, 2024

Summary

	Week 47	Week 46	Var. from Last Year	
1. Stocks in Store ('000 tonnes)				
Country Elevators	↓ 2,518.7	2,558.5	-8%	
% of Working Capacity	46%	47%		
Terminal Elevators	↓ 1,113.0	1,168.5	24%	
% of Working Capacity	58%	61%		
2. Country Deliveries ('000 tonnes)				
Country Deliveries	↓ 914.9	982.2	-5%	
3. Port Performance (Cars)				
Vancouver Unloads	↓ 5,155	5,558	8%	
Prince Rupert Unloads	↑ 928	742	141%	
Churchill Unloads	— 0	0	n/a	
Thunder Bay Unloads	↑ 2,209	2,124	56%	
Total Weekly Unloads	↓ 8,292	8,424	26%	
4-Week Rolling Average	↑ 6,976	6,858	n/a	
Var. to 4-Week Rolling Average	19%	23%	n/a	
YTD Unloads	358,506	350,214	-4%	
Weekly Out-of-Car Time	↑ 16.8%	10.3%	58.8%	
4. Terminal Shipments Year-to-Date ('000 tonnes)				
Vancouver	↑ 25,500.8	24,939.5	-4%	
Prince Rupert	↑ 3,078.1	2,995.8	-27%	
Churchill	— 0.0	0.0	n/a	
Thunder Bay	↑ 6,230.7	6,152.3	4%	
Total Western Canada	↑ 34,809.6	34,087.6	-5%	
5. Vessels as at Jun 30, 2024				
	Week 48	Week 47	Var. from Last Year	
Vancouver	Vessel Lineup in port	↓ 12	14	-14%
	Vessels Cleared	↓ 10	12	25%
	Vessels Arrived	↓ 8	10	33%
Pr. Rupert	Vessel Lineup in port	— 1	1	-67%
	Vessels Cleared	↑ 2	1	100%
	Vessels Arrived	↑ 2	1	100%
Vessels Inbound Jul 01, 2024 to Jul 07, 2024 (Week 49)				
Vancouver	8			
Prince Rupert	2			

1. Stocks in Store: (Page 2)

- Country stocks decreased to 2.52 MMT in Week 47 utilizing 46% of the system's working capacity. Space in primary elevators is good.
- Total western port terminal stocks decreased to 1.11 MMT in Week 47, utilizing 58% of the working capacity.

2. Country Deliveries: (Page 3)

- Deliveries to primary elevators were 0.91 MMT in Week 47.

3. Port Performance: (Pages 3-5)

- Total western port unloads were 19% higher than the 4-week moving average and 26% higher than Week 47 last year.
- West Coast unloads were 6,083 cars (Vancouver 5,155 and Prince Rupert 928), 18% higher than the 4-week moving average and 18% higher than Week 47 last year.
- Thunder Bay unloads were 2,209 cars, 21% higher than the 4-week moving average and 56% higher than Week 47 last year.
- Year-to-date total western port unloads are 4% lower than the same period last year. The corresponding tonnage is 4% lower than the same period last year.
- The total average terminal out-of-car time (OCT) increased to 16.8% from 10.3% the previous week. The OCT for Week 47 was 23.6% at Vancouver, 0.0% at Prince Rupert, and 0.0% at Thunder Bay.

5. Shipments: (Page 5)

- Year-to-date Western Canadian shipments from port terminal elevators at Week 47 are 5% lower than the same period last year and 12% higher than the 3-year average.

6. Vessels: (Page 5)

- Vancouver vessel lineup for Week 48 2023-24 decreased to 12 vessels (The current one-year average at Vancouver is 20 vessels). Of the 12, 7 were at berth, 3 were anchored at English Bay, 1 was anchored at Burrard Inlet, and 1 was anchored at Vancouver Island.
- Prince Rupert vessel lineup for Week 48 2023-24 remained at 1 vessel (The current one-year average at Prince Rupert is 2 vessels).
- Vessels cleared from Vancouver was 10 and from Prince Rupert was 2 in Week 48 2023-24.

1. Stocks in Store

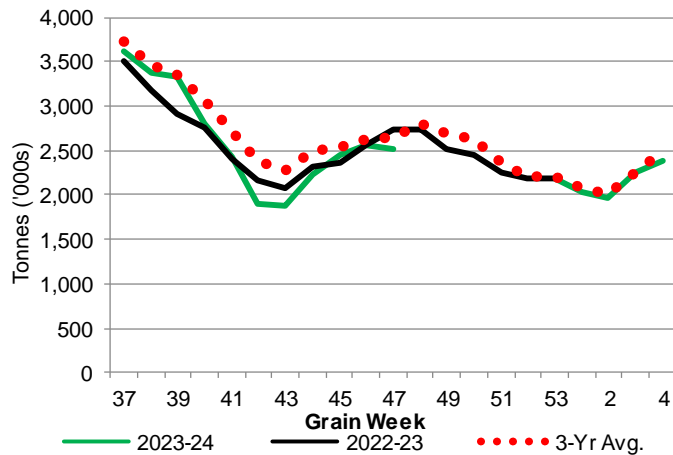
1-A1 Country Stocks ('000 tonnes) – Week 47

	MB	SK	AB	BC	Total
2023-24	470.9	1,270.4	768.8	8.6	2,518.7
2022-23	583.6	1,392.2	742.7	21.1	2,739.6
3-Yr Avg.	485.3	1,356.2	783.7	14.7	2,640.0
Var % - LY	-19%	-9%	4%	-59%	-8%
Var % 3-Yr Avg.	-3%	-6%	-2%	-42%	-5%
Storage Capacity	1,610.0	4,224.4	2,460.4	39.7	8,334.5
Estimated Working Capacity	1,046.5	2,745.9	1,599.2	25.8	5,417.4
23-24 % of Wkg Cap	45%	46%	48%	33%	46%

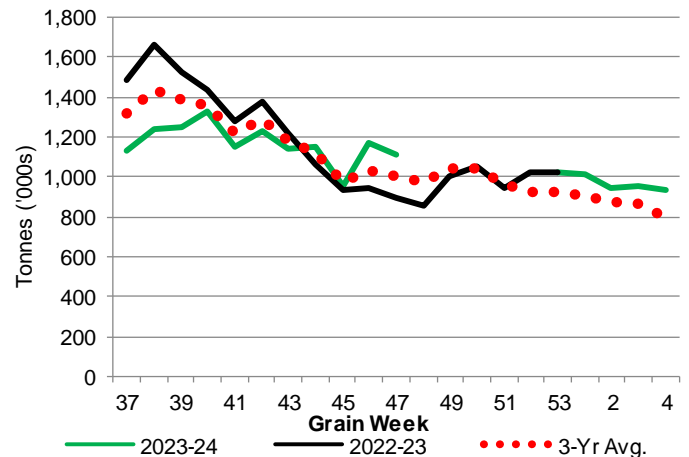
1-B1 Terminal Stocks ('000 tonnes) – Week 47

	VC	PR	West Coast	CH	TB	Total
2023-24	502.9	164.7	667.6	0.7	444.7	1,113.0
2022-23	548.4	84.9	633.3	0.7	264.2	898.2
3-Yr Avg.	543.2	107	650.2	0.7	350.4	1,001.2
Var % - LY	-8%	94%	5%	0%	68%	24%
Var % 3-Yr Avg.	-7%	54%	3%	0%	27%	11%
Storage Capacity	1,275.5	209.5	1,485.0	140.0	1,127.5	2,752.5
Estimated Working Capacity	892.9	146.7	1,039.6	98.0	789.2	1,926.8
23-24 % of Wkg Cap	56%	112%	64%	1%	56%	58%

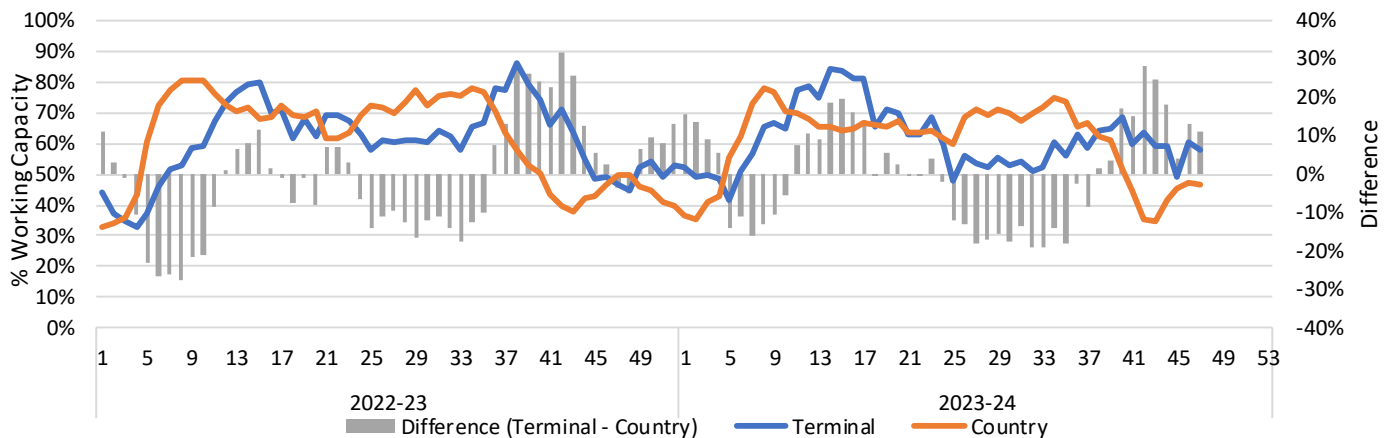
1-A2 Weekly Country Stocks in Store



1-B2 Weekly Terminal Stocks in Store



1-C Weekly Stock Balance

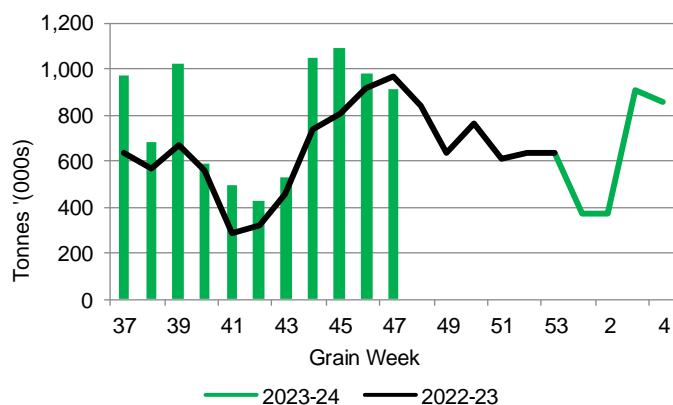


2. Country Deliveries

2-A Country Deliveries ('000 tonnes) – Week 47

	MB	SK	AB	BC	Total
2023-24	152.5	485.6	273.0	3.8	914.9
2022-23	160.8	557.0	240.1	5.0	962.9
4 Wk Avg	175.0	524.2	304.4	4.3	1,007.8
Var % to Last Year	-5%	-13%	14%	-24%	-5%
Var % To 4 Wk Avg	-13%	-7%	-10%	-12%	-9%

2-B 2023-24 Weekly Country Deliveries



3. Port Performance

3-A Weekly Unloads by Port (Cars) – This Year for Week 47, 4-Week Moving Average and Variances

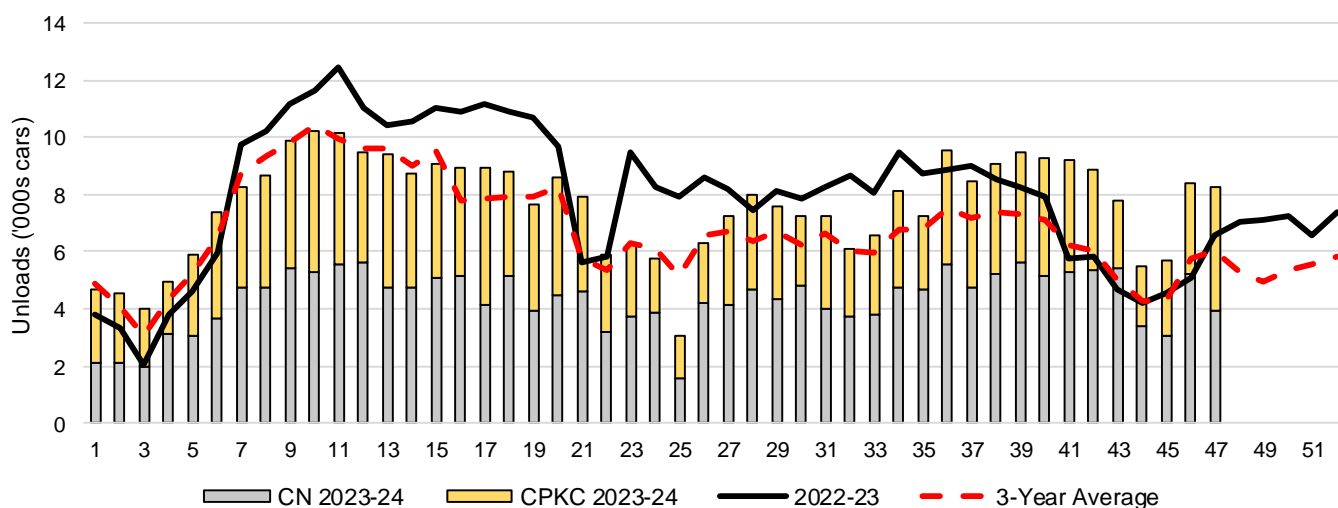
	Vancouver	Prince Rupert	West Coast	Thunder Bay	Churchill	Total
2023-24	5,155	928	6,083	2,209	-	8,292
2022-23	4,786	385	5,171	1,414	-	6,585
4-Wk Avg.	4,410	737	5,147	1,829	-	6,976
Var % to Last Year	8%	141%	18%	56%	n/a	26%
Var % to 4-Wk Avg.	17%	26%	18%	21%	n/a	19%

3-B Terminal Unloads by Port – This Year-to-Date as at Week 47 and Variances

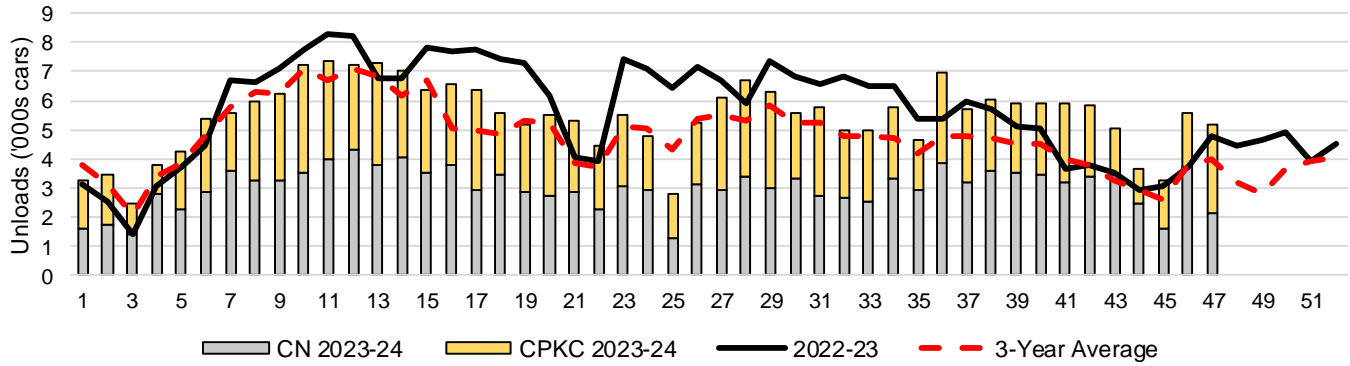
YTD Unloads (cars)	Vancouver	Prince Rupert	West Coast	Thunder Bay	Churchill	Total
2023-24	255,904	32,451	288,355	70,151	-	358,506
2022-23	267,880	44,180	312,060	63,013	-	375,073
3-Yr Avg	225,930	33,385	259,315	62,161	-	321,476
Var % to Last Year	-4%	-27%	-8%	11%	n/a	-4%
Var % to 3-Yr Avg	13%	-3%	11%	13%	n/a	12%

YTD Unloads ('000 tonnes)	Vancouver	Prince Rupert	West Coast	Thunder Bay	Churchill	Total
2023-24	24,681.0	3,136.1	27,817.1	6,783.8	-	34,600.9
2022-23	25,874.8	4,240.7	30,115.5	6,080.2	-	36,195.7
3-Yr Avg.	21,698.3	3,191.6	24,889.9	5,986.6	-	30,876.5
Var % to Last Year	-5%	-26%	-8%	12%	n/a	-4%
Var % to 3-Yr Avg.	14%	-2%	12%	13%	n/a	12%

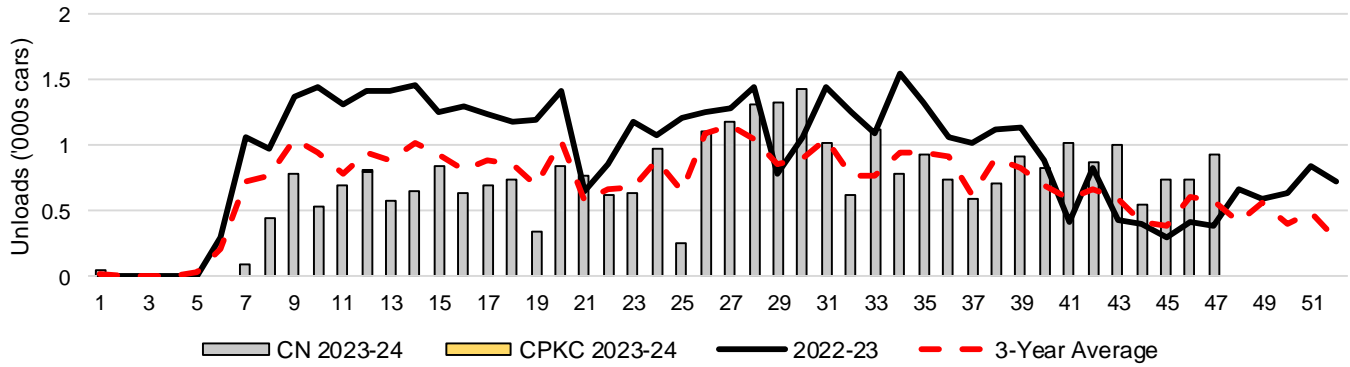
3-C Western Port Terminal Unloads (cars), Total by Carrier, This Year vs. Last Year and the 3-Year Average



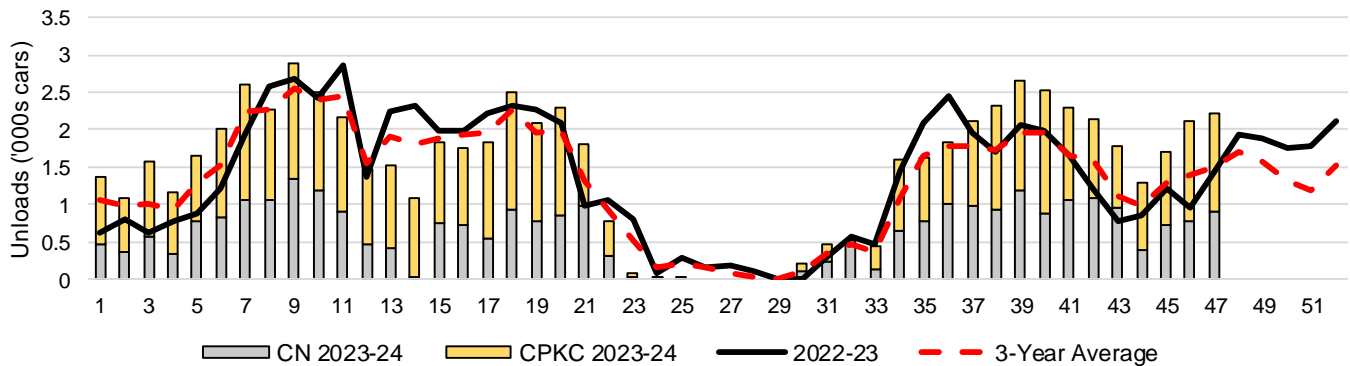
3-D Vancouver Terminal Unloads (cars), Total by Carrier, This Year vs. Last Year and the 3-Year Average



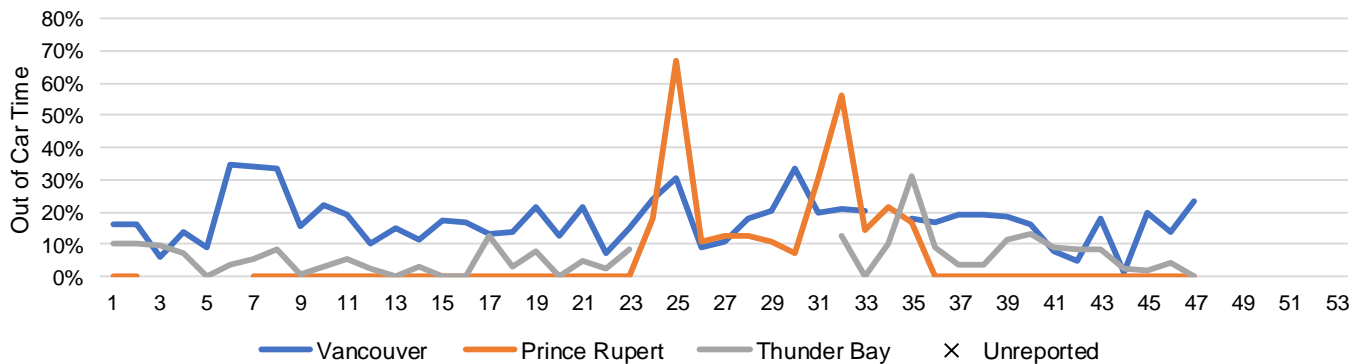
3-E Prince Rupert Terminal Unloads (cars), Total by Carrier, This Year vs. Last Year and the 3-Year Average



3-F Thunder Bay Terminal Unloads (cars), Total by Carrier, This Year vs. Last Year and the 3-Year Average



3-G Weekly Out-of-Car Time (% of hours out-of-cars / total hours working)



Out-of-car time is measured weekly and uses data from terminal elevators on the total number of hours the facilities are open & staffed (including overtime hours) and the corresponding number of hours that terminals have no railcars available to unload. The measure is expressed as a percentage (hours without cars to the total number of hours working).

3-H Monthly Unloads (cars) – This year vs. Last Year and the 3-Year Average to Week 44 2023-24

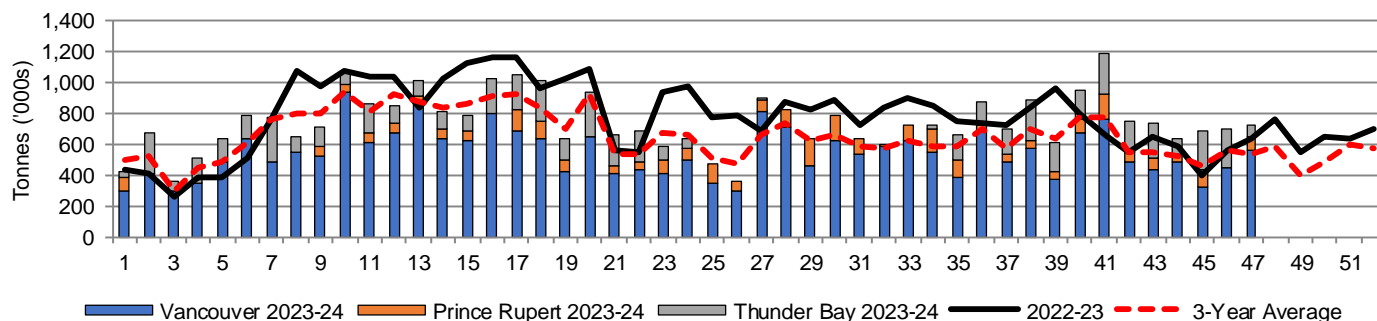
Months	Aug	Sep	Oct	Nov	Dec	Jan	Feb	Mar	Apr	May	Jun	Jul
Weeks	1-5	6-9	10-13	14-18	19-22	23-27	28-31	32-35	36-39	40-44	45-48	49-53
2023-24	24,066	34,250	39,311	44,460	30,025	28,628	30,071	28,076	36,528	40,675	-	-
2022-23	17,592	37,081	45,507	54,625	31,875	42,443	31,747	34,971	34,634	28,378	23,280	28,334
3-Yr Avg.	21,619	34,406	39,606	42,112	27,333	30,880	25,934	25,485	29,334	28,645	21,322	21,701
Var % to Last Year	37%	-8%	-14%	-19%	-6%	-33%	-5%	-20%	5%	43%		
Var % to 3-Yr Avg.	11%	0%	-1%	6%	10%	-7%	16%	10%	25%	42%		

4. Shipments

4-A Shipments from Port Terminals ('000 tonnes) – This Year-to-Date as at Week 47 and Variance to Last Year-to-Date

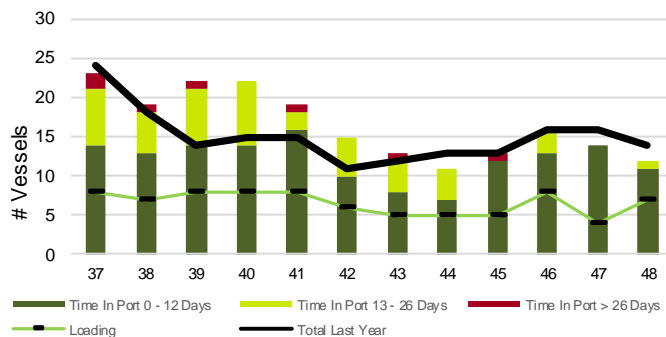
	Vancouver	Prince Rupert	West Coast	Thunder Bay	Churchill	Total
2023-24	25,500.8	3,078.1	28,578.9	6,230.7	-	34,809.6
2022-23	26,434.9	4,238.2	30,673.1	6,007.1	-	36,680.2
3-Yr Avg.	22,085.9	3,141.8	25,227.7	5,810.5	-	31,038.2
Var % to Last Year	-4%	-27%	-7%	4%	n/a	-5%
Var % to 3-Yr Avg.	15%	-2%	13%	7%	n/a	12%

4-B Weekly Shipments ('000 tonnes) from Port Terminals – This Year vs Last Year and the 3-Year Average

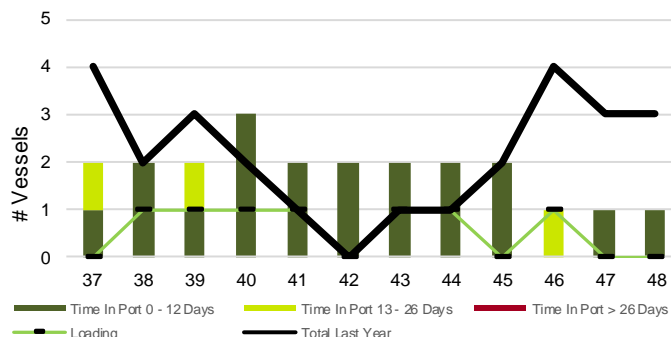


5. Vessels

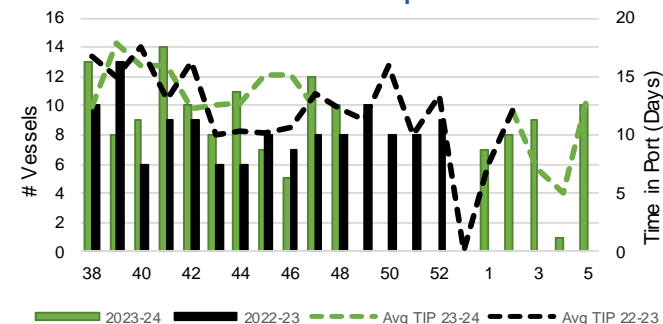
5-A Vessel Lineup at Vancouver as of Week 48 2023-24



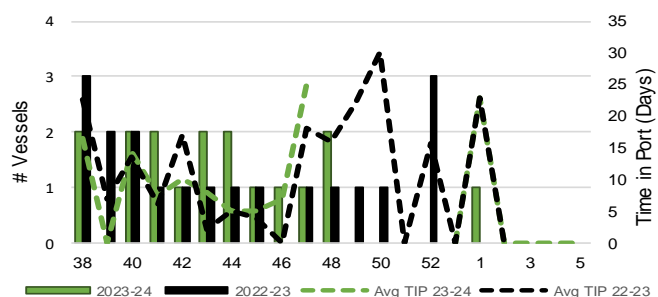
5-C Vessel Lineup at Prince Rupert as of Week 48 2023-24



5-B Vessels Cleared at Vancouver up to Week 48 2023-24



5-D Vessels Cleared at Prince Rupert up to Week 48 2023-24



Note: The 'Time in Port' measure for 6-A and 6-C is calculated as how long each vessel in the lineup has been in port as at Sunday 23:59 of that grain week. The 'Avg Time in Port (TIP)' measure for 6-B and 6-D is the average number of days that all vessels which cleared that week were in port. These measures use vessel data provided by the BC Chamber of Shipping and Pacific Pilotage Authority.