

Grain Monitoring Program

Weekly Performance Update

July 09, 2024

For Grain Week 48 2023-24 CY
June 24, 2024 to June 30, 2024

Summary

	Week 48	Week 47	Var. from Last Year	
1. Stocks in Store ('000 tonnes)				
Country Elevators	↓ 2,376.2	2,518.7	-13%	
% of Working Capacity	44%	46%		
Terminal Elevators	↑ 1,125.6	1,113.0	31%	
% of Working Capacity	58%	58%		
2. Country Deliveries ('000 tonnes)				
Country Deliveries	↓ 736.3	914.9	-12%	
3. Port Performance (Cars)				
Vancouver Unloads	↑ 5,659	5,155	27%	
Prince Rupert Unloads	↓ 662	928	0%	
Churchill Unloads	— 0	0	n/a	
Thunder Bay Unloads	↓ 1,246	2,209	-36%	
Total Weekly Unloads	↓ 7,567	8,292	7%	
4-Week Rolling Average	↑ 7,496	6,976	n/a	
Var. to 4-Week Rolling Average	1%	19%	n/a	
YTD Unloads	366,073	358,506	-4%	
Weekly Out-of-Car Time	↓ 11.6%	15.1%	-35.3%	
4. Terminal Shipments Year-to-Date ('000 tonnes)				
Vancouver	↑ 25,995.8	25,500.8	-4%	
Prince Rupert	↑ 3,200.6	3,078.1	-26%	
Churchill	— 0.0	0.0	n/a	
Thunder Bay	↑ 6,390.5	6,230.7	3%	
Total Western Canada	↑ 35,586.9	34,809.6	-5%	
5. Vessels as at Jul 7, 2024				
	Week 49	Week 48	Var. from Last Year	
Vancouver	Vessel Lineup in port	— 12	12	-8%
	Vessels Cleared	↓ 6	10	-40%
	Vessels Arrived	↓ 6	8	-33%
Pr. Rupert	Vessel Lineup in port	— 1	1	-50%
	Vessels Cleared	↓ 1	2	0%
	Vessels Arrived	↓ 1	2	n/a
Vessels Inbound Jul 08, 2024 to Jul 14, 2024 (Week 50)				
Vancouver	8			
Prince Rupert	3			

1. Stocks in Store: (Page 2)

- Country stocks decreased to 2.38 MMT in Week 48 utilizing 44% of the system's working capacity. Space in primary elevators is good.
- Total western port terminal stocks increased to 1.13 MMT in Week 48, utilizing 58% of the working capacity.

2. Country Deliveries: (Page 3)

- Deliveries to primary elevators were 0.74 MMT in Week 48.

3. Port Performance: (Pages 3-5)

- Total western port unloads were 1% higher than the 4-week moving average and 7% higher than Week 48 last year.
- West Coast unloads were 6,321 cars (Vancouver 5,659 and Prince Rupert 662), 11% higher than the 4-week moving average and 23% higher than Week 48 last year.
- Thunder Bay unloads were 1,246 cars, 31% lower than the 4-week moving average and 36% lower than Week 48 last year.
- Year-to-date total western port unloads are 4% lower than the same period last year. The corresponding tonnage is 4% lower than the same period last year.
- The total average terminal out-of-car time (OCT) decreased to 11.6% from 15.1% the previous week. The OCT for Week 48 was 13.5% at Vancouver and 6.5% at Thunder Bay. At the time of publishing, Prince Rupert had not yet reported Week 48 OCT.

5. Shipments: (Page 5)

- Year-to-date Western Canadian shipments from port terminal elevators at Week 48 are 5% lower than the same period last year and 12% higher than the 3-year average.

6. Vessels: (Page 5)

- Vancouver vessel lineup for Week 49 2023-24 remained at 12 vessels (The current one-year average at Vancouver is 20 vessels). Of the 12, 5 were at berth, 5 were anchored at English Bay, 1 was anchored at Burrard Inlet, and 1 was anchored at Vancouver Island.
- Prince Rupert vessel lineup for Week 49 2023-24 remained at 1 vessel (The current one-year average at Prince Rupert is 2 vessels).
- Vessels cleared from Vancouver was 6 and from Prince Rupert was 1 in Week 49 2023-24.

1. Stocks in Store

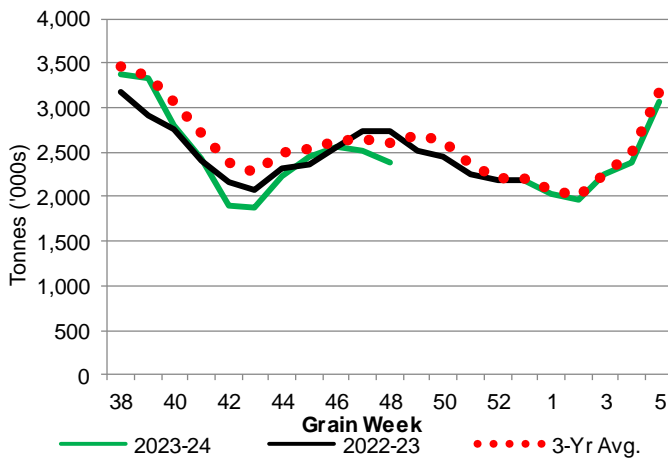
1-A1 Country Stocks ('000 tonnes) – Week 48

	MB	SK	AB	BC	Total
2023-24	462.7	1,185.2	721.1	7.2	2,376.2
2022-23	577.6	1,447.2	685.8	20.6	2,731.2
3-Yr Avg.	476.8	1,353.6	749.8	14.6	2,594.8
Var % - LY	-20%	-18%	5%	-65%	-13%
Var % 3-Yr Avg.	-3%	-12%	-4%	-51%	-8%
Storage Capacity	1,610.0	4,224.4	2,460.4	39.7	8,334.5
Estimated Working Capacity	1,046.5	2,745.9	1,599.2	25.8	5,417.4
23-24 % of Wkg Cap	44%	43%	45%	28%	44%

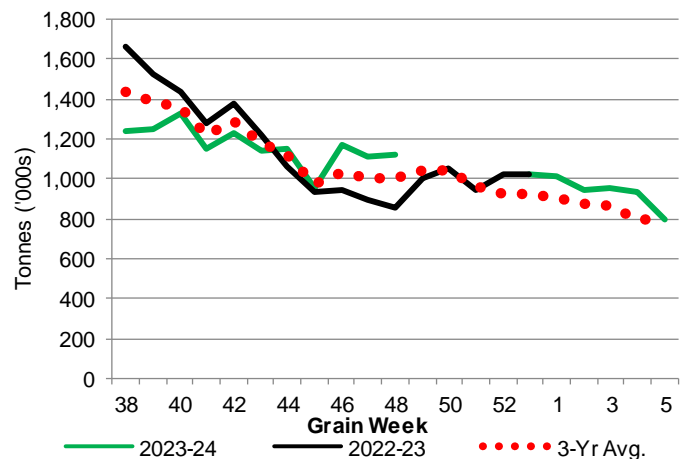
1-B1 Terminal Stocks ('000 tonnes) – Week 48

	VC	PR	West Coast	CH	TB	Total
2023-24	532.2	104.8	637.0	0.7	487.9	1,125.6
2022-23	561.4	67.1	628.5	0.7	229.9	859.1
3-Yr Avg.	569.4	72.4	641.8	0.7	360.2	1,002.7
Var % - LY	-5%	56%	1%	0%	112%	31%
Var % 3-Yr Avg.	-7%	45%	-1%	0%	35%	12%
Storage Capacity	1,275.5	209.5	1,485.0	140.0	1,127.5	2,752.5
Estimated Working Capacity	892.9	146.7	1,039.6	98.0	789.2	1,926.8
23-24 % of Wkg Cap	60%	71%	61%	1%	62%	58%

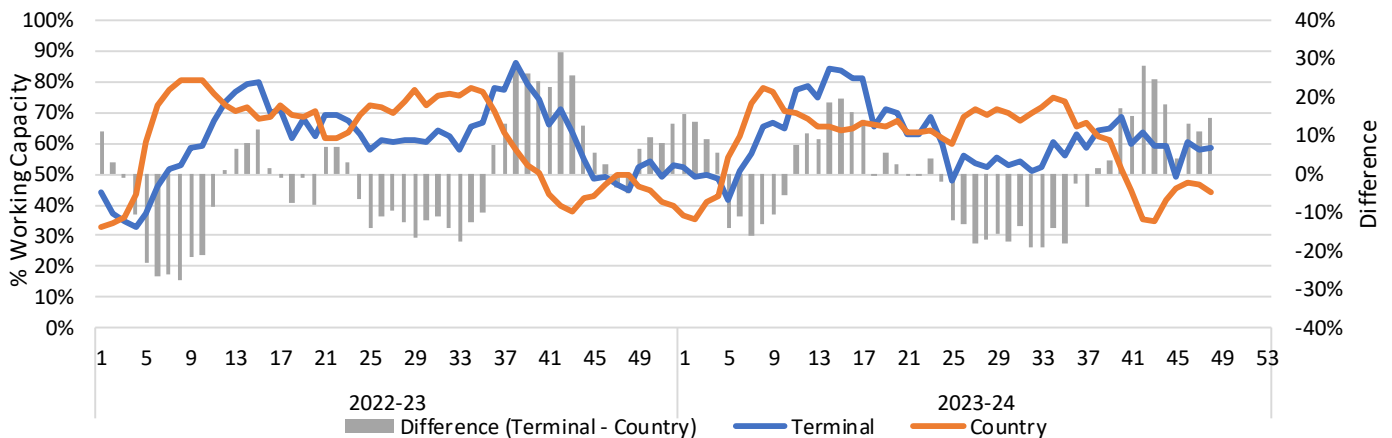
1-A2 Weekly Country Stocks in Store



1-B2 Weekly Terminal Stocks in Store



1-C Weekly Stock Balance

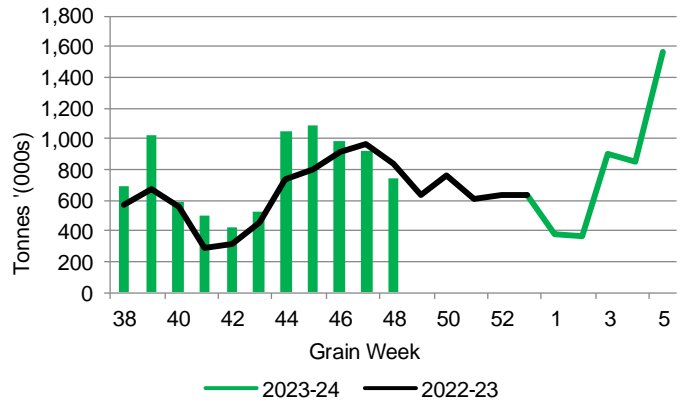


2. Country Deliveries

2-A Country Deliveries ('000 tonnes) – Week 48

	MB	SK	AB	BC	Total
2023-24	117.4	431.6	186.1	1.2	736.3
2022-23	142.6	472.0	217.9	2.9	835.4
4 Wk Avg	153.3	502.2	271.8	3.2	930.5
Var % to Last Year	-18%	-9%	-15%	-59%	-12%
Var % To 4 Wk Avg	-23%	-14%	-32%	-63%	-21%

2-B 2023-24 Weekly Country Deliveries



3. Port Performance

3-A Weekly Unloads by Port (Cars) – This Year for Week 48, 4-Week Moving Average and Variances

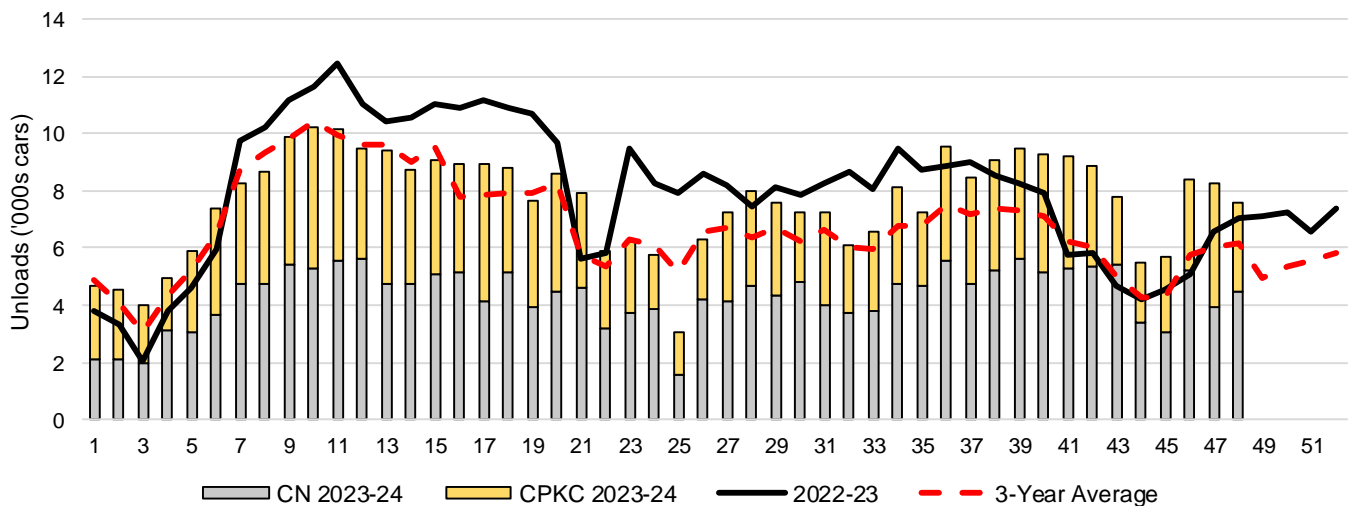
	Vancouver	Prince Rupert	West Coast	Thunder Bay	Churchill	Total
2023-24	5,659	662	6,321	1,246	-	7,567
2022-23	4,459	661	5,120	1,940	-	7,060
4-Wk Avg.	4,910	767	5,677	1,819	-	7,496
Var % to Last Year	27%	0%	23%	-36%	n/a	7%
Var % to 4-Wk Avg.	15%	-14%	11%	-31%	n/a	1%

3-B Terminal Unloads by Port – This Year-to-Date as at Week 48 and Variances

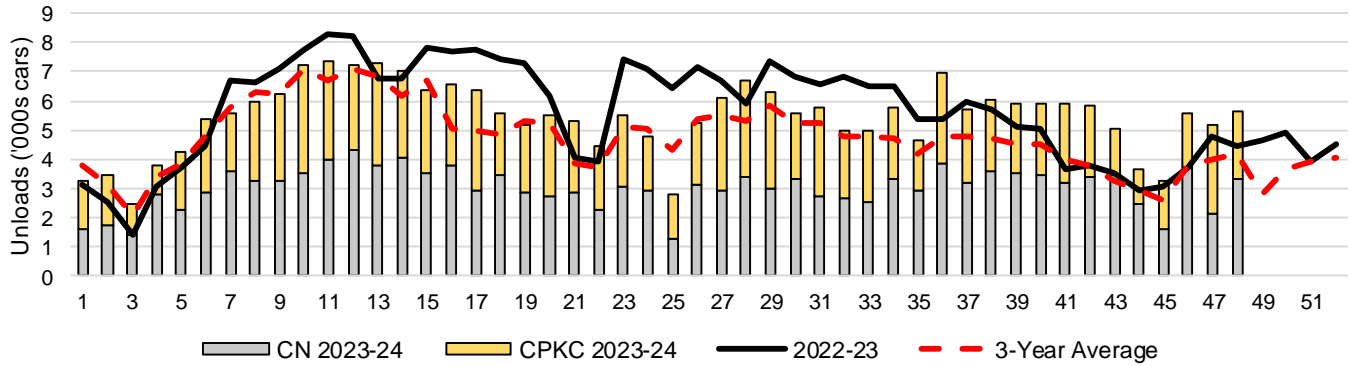
YTD Unloads (cars)	Vancouver	Prince Rupert	West Coast	Thunder Bay	Churchill	Total
2023-24	261,563	33,113	294,676	71,397	-	366,073
2022-23	272,339	44,841	317,180	64,953	-	382,133
3-Yr Avg	230,108	33,902	264,010	63,642	-	327,652
Var % to Last Year	-4%	-26%	-7%	10%	n/a	-4%
Var % to 3-Yr Avg	14%	-2%	12%	12%	n/a	12%

YTD Unloads ('000 tonnes)	Vancouver	Prince Rupert	West Coast	Thunder Bay	Churchill	Total
2023-24	25,212.5	3,198.2	28,410.7	6,905.8	-	35,316.5
2022-23	26,360.7	4,303.8	30,664.5	6,271.0	-	36,935.5
3-Yr Avg.	22,115.8	3,240.2	25,356.0	6,132.2	-	31,488.2
Var % to Last Year	-4%	-26%	-7%	10%	n/a	-4%
Var % to 3-Yr Avg.	14%	-1%	12%	13%	n/a	12%

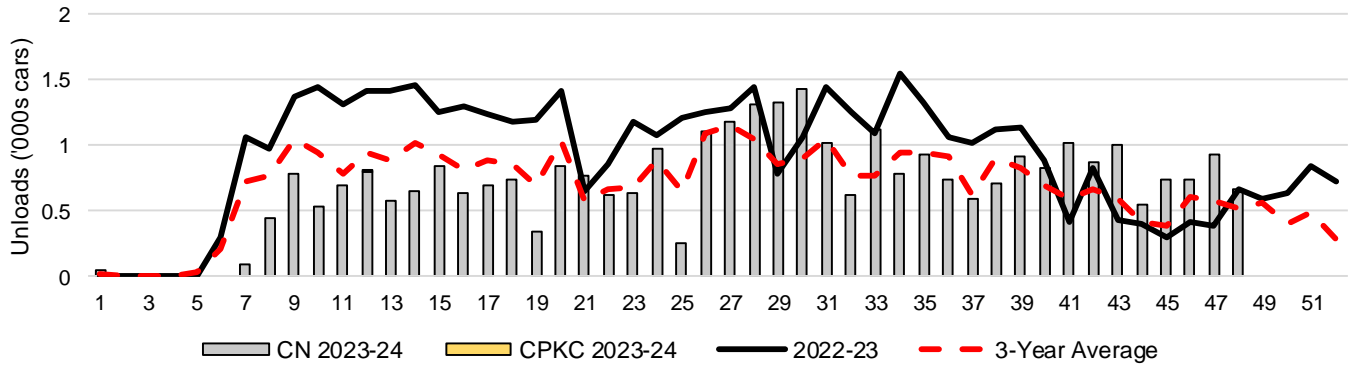
3-C Western Port Terminal Unloads (cars), Total by Carrier, This Year vs. Last Year and the 3-Year Average



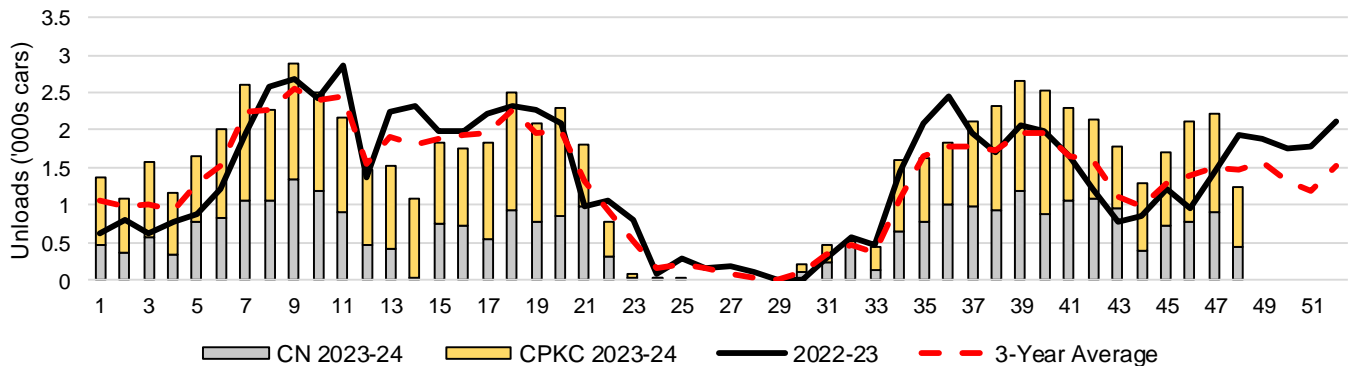
3-D Vancouver Terminal Unloads (cars), Total by Carrier, This Year vs. Last Year and the 3-Year Average



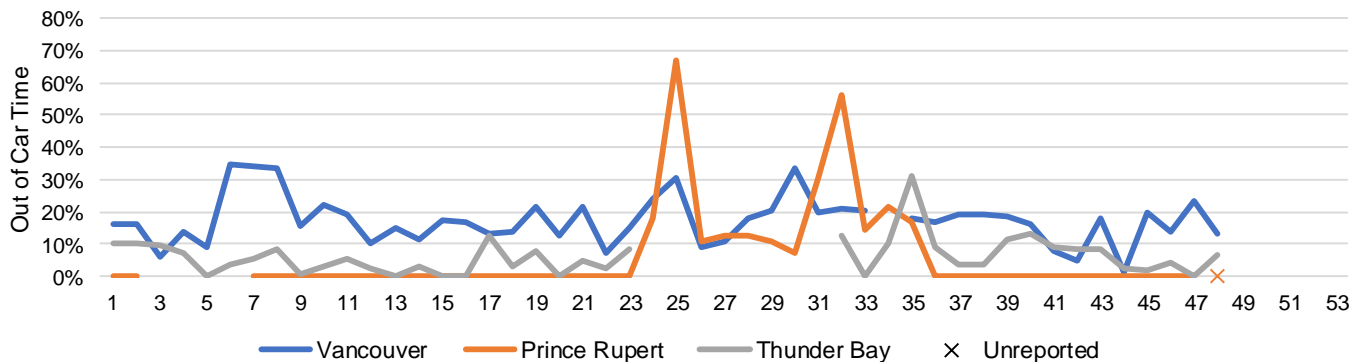
3-E Prince Rupert Terminal Unloads (cars), Total by Carrier, This Year vs. Last Year and the 3-Year Average



3-F Thunder Bay Terminal Unloads (cars), Total by Carrier, This Year vs. Last Year and the 3-Year Average



3-G Weekly Out-of-Car Time (% of hours out-of-cars / total hours working)



Out-of-car time is measured weekly and uses data from terminal elevators on the total number of hours the facilities are open & staffed (including overtime hours) and the corresponding number of hours that terminals have no railcars available to unload. The measure is expressed as a percentage (hours without cars to the total number of hours working).

3-H Monthly Unloads (cars) – This year vs. Last Year and the 3-Year Average to Week 48 2023-24

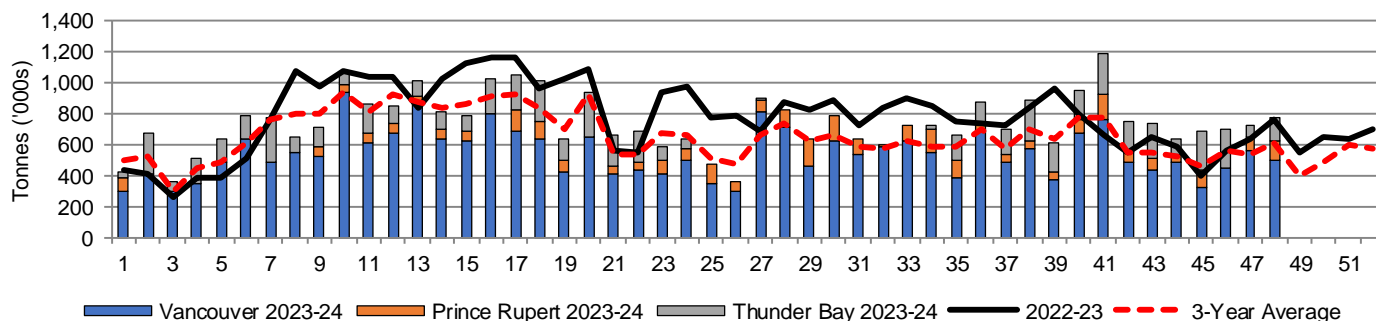
Months	Aug	Sep	Oct	Nov	Dec	Jan	Feb	Mar	Apr	May	Jun	Jul
Weeks	1-5	6-9	10-13	14-18	19-22	23-27	28-31	32-35	36-39	40-44	45-48	49-53
2023-24	24,066	34,250	39,311	44,460	30,025	28,628	30,071	28,076	36,528	40,675	29,983	-
2022-23	17,592	37,081	45,507	54,625	31,875	42,443	31,747	34,971	34,634	28,378	23,280	28,334
3-Yr Avg.	21,619	34,406	39,606	42,112	27,333	30,880	25,934	25,485	29,334	28,645	22,298	21,701
Var % to Last Year	37%	-8%	-14%	-19%	-6%	-33%	-5%	-20%	5%	43%	29%	
Var % to 3-Yr Avg.	11%	0%	-1%	6%	10%	-7%	16%	10%	25%	42%	34%	

4. Shipments

4-A Shipments from Port Terminals ('000 tonnes) – This Year-to-Date as at Week 48 and Variance to Last Year-to-Date

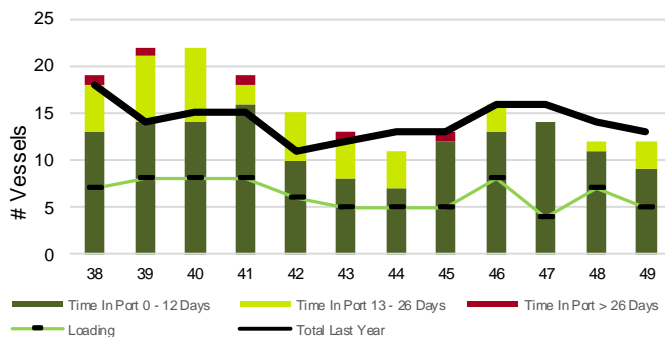
	Vancouver	Prince Rupert	West Coast	Thunder Bay	Churchill	Total
2023-24	25,995.8	3,200.6	29,196.4	6,390.5	-	35,586.9
2022-23	26,943.4	4,319.3	31,262.7	6,179.9	-	37,442.6
3-Yr Avg.	22,478.2	3,225.0	25,703.3	5,948.9	-	31,652.1
Var % to Last Year	-4%	-26%	-7%	3%	n/a	-5%
Var % to 3-Yr Avg.	16%	-1%	14%	7%	n/a	12%

4-B Weekly Shipments ('000 tonnes) from Port Terminals – This Year vs Last Year and the 3-Year Average

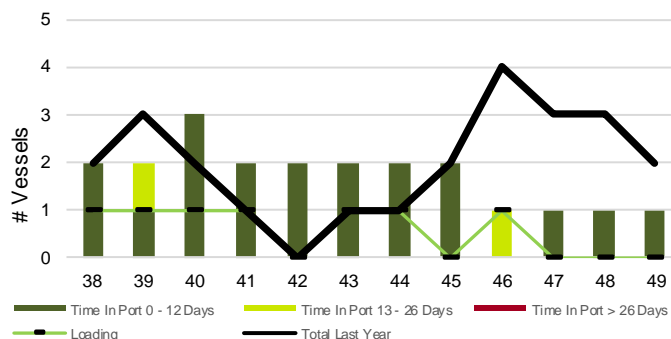


5. Vessels

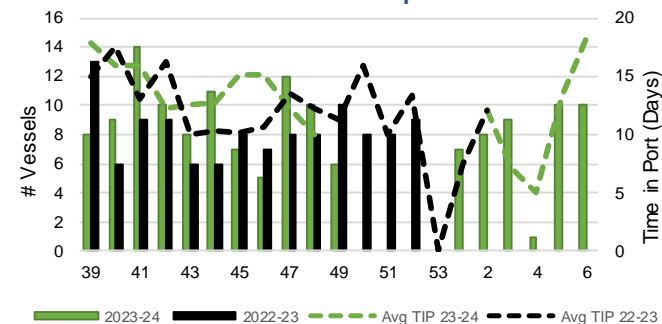
5-A Vessel Lineup at Vancouver as of Week 49 2023-24



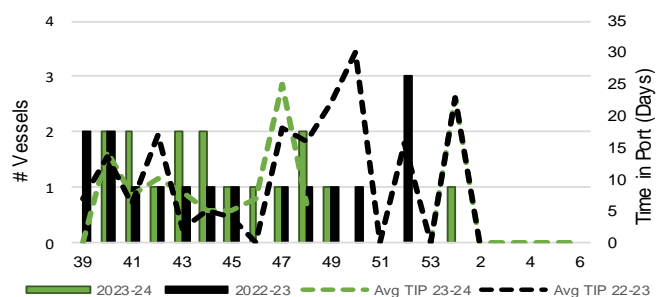
5-C Vessel Lineup at Prince Rupert as of Week 49 2023-24



5-B Vessels Cleared at Vancouver up to Week 49 2023-24



5-D Vessels Cleared at Prince Rupert up to Week 49 2023-24



Note: The 'Time in Port' measure for 6-A and 6-C is calculated as how long each vessel in the lineup has been in port as at Sunday 23:59 of that grain week. The 'Avg Time in Port (TIP)' measure for 6-B and 6-D is the average number of days that all vessels which cleared that week were in port. These measures use vessel data provided by the BC Chamber of Shipping and Pacific Pilotage Authority.