

Grain Monitoring Program

Weekly Performance Update

July 16, 2024

For Grain Week 49 2023-24 CY
July 1, 2024 to July 7, 2024

Summary

	Week 49	Week 48	Var. from Last Year	
1. Stocks in Store ('000 tonnes)				
Country Elevators	↑ 2,427.2	2,376.2	-3%	
% of Working Capacity	45%	44%		
Terminal Elevators	↑ 1,237.6	1,125.6	23%	
% of Working Capacity	64%	58%		
2. Country Deliveries ('000 tonnes)				
Country Deliveries	↑ 775.9	736.3	23%	
3. Port Performance (Cars)				
Vancouver Unloads	↓ 5,373	5,659	16%	
Prince Rupert Unloads	↑ 942	662	60%	
Churchill Unloads	— 0	0	n/a	
Thunder Bay Unloads	↑ 1,500	1,499	-20%	
Total Weekly Unloads	↓ 7,815	7,820	10%	
4-Week Rolling Average	↑ 8,088	7,559	n/a	
Var. to 4-Week Rolling Average	-3%	3%	n/a	
YTD Unloads	374,141	366,326	-4%	
Weekly Out-of-Car Time	↑ 7.9%	7.6%	-63.6%	
4. Terminal Shipments Year-to-Date ('000 tonnes)				
Vancouver	↑ 26,422.2	26,005.3	-3%	
Prince Rupert	↑ 3,248.9	3,200.6	-25%	
Churchill	— 0.0	0.0	n/a	
Thunder Bay	↑ 6,622.9	6,390.5	5%	
Total Western Canada	↑ 36,294.0	35,596.4	-5%	
5. Vessels as at Jul 14, 2024				
	Week 50	Week 49	Var. from Last Year	
Vancouver	Vessel Lineup in port	↑ 13	12	0%
	Vessels Cleared	— 6	6	-25%
	Vessels Arrived	↑ 7	6	-13%
Pr. Rupert	Vessel Lineup in port	— 1	1	-67%
	Vessels Cleared	↑ 2	1	100%
	Vessels Arrived	↑ 2	1	0%
Vessels Inbound Jul 15, 2024 to Jul 21, 2024 (Week 51)				
Vancouver	10			
Prince Rupert	2			

1. Stocks in Store: (Page 2)

- Country stocks increased to 2.43 MMT in Week 49 utilizing 45% of the system's working capacity. Space in primary elevators is good.
- Total western port terminal stocks increased to 1.24 MMT in Week 49, utilizing 64% of the working capacity.

2. Country Deliveries: (Page 3)

- Deliveries to primary elevators were 0.78 MMT in Week 49.

3. Port Performance: (Pages 3-5)

- Total western port unloads were 3% lower than the 4-week moving average and 10% higher than Week 49 last year.
- West Coast unloads were 6,315 cars (Vancouver 5,373 and Prince Rupert 942), 1% higher than the 4-week moving average and 21% higher than Week 49 last year.
- Thunder Bay unloads were 1,500 cars, 18% lower than the 4-week moving average and 20% lower than Week 49 last year.
- Year-to-date total western port unloads are 4% lower than the same period last year. The corresponding tonnage is 4% lower than the same period last year.
- The total average terminal out-of-car time (OCT) increased to 7.9% from 7.6% the previous week. The OCT for Week 49 was 9.7% at Vancouver, 0.0% at Prince Rupert and 3.8% at Thunder Bay.

5. Shipments: (Page 5)

- Year-to-date Western Canadian shipments from port terminal elevators at Week 49 are 4% lower than the same period last year and 13% higher than the 3-year average.

6. Vessels: (Page 5)

- Vancouver vessel lineup for Week 50 2023-24 increased to 13 vessels (The current one-year average at Vancouver is 20 vessels). Of the 13, 2 were at berth, 6 were anchored at English Bay, 1 was anchored at Burrard Inlet, and 4 were anchored at Vancouver Island.
- Prince Rupert vessel lineup for Week 50 2023-24 remained at 1 vessel (The current one-year average at Prince Rupert is 2 vessels).
- Vessels cleared from Vancouver was 6 and from Prince Rupert was 2 in Week 50 2023-24.

1. Stocks in Store

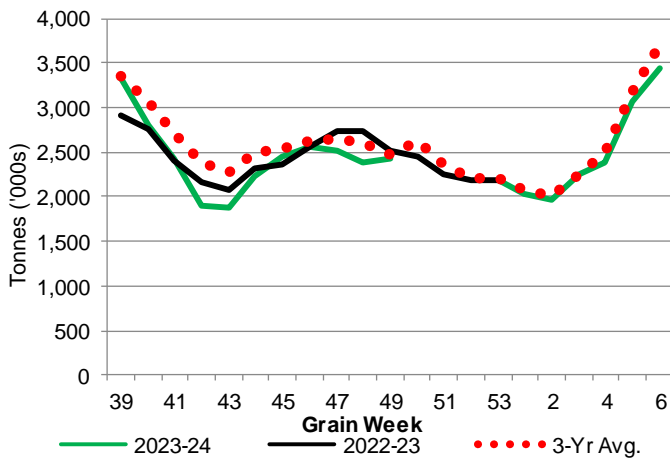
1-A1 Country Stocks ('000 tonnes) – Week 49

	MB	SK	AB	BC	Total
2023-24	473.5	1,233.0	710.4	10.3	2,427.2
2022-23	576.3	1,258.4	649.2	24.0	2,507.9
3-Yr Avg.	481.2	1,267.5	705.5	16.1	2,470.4
Var % - LY	-18%	-2%	9%	-57%	-3%
Var % 3-Yr Avg.	-2%	-3%	1%	-36%	-2%
Storage Capacity	1,610.0	4,224.4	2,460.4	39.7	8,334.5
Estimated Working Capacity	1,046.5	2,745.9	1,599.2	25.8	5,417.4
23-24 % of Wkg Cap	45%	45%	44%	40%	45%

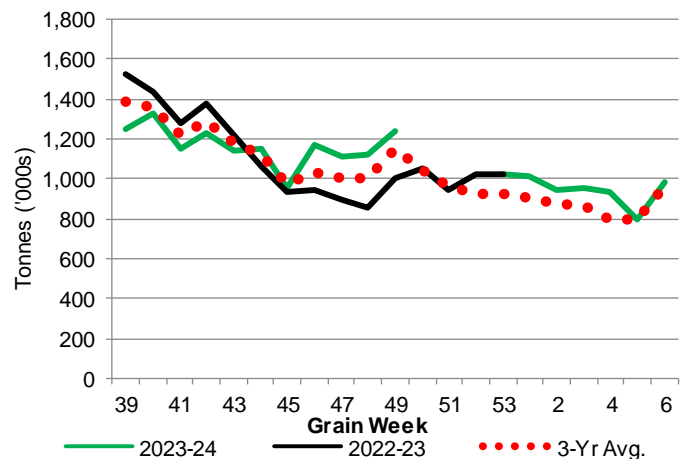
1-B1 Terminal Stocks ('000 tonnes) – Week 49

	VC	PR	West Coast	CH	TB	Total
2023-24	690.4	148.0	838.4	0.7	398.5	1,237.6
2022-23	600.4	89.9	690.3	0.7	315.3	1,006.3
3-Yr Avg.	643.8	114.4	758.2	0.5	388.6	1,147.3
Var % - LY	15%	65%	21%	0%	26%	23%
Var % 3-Yr Avg.	7%	29%	11%	40%	3%	8%
Storage Capacity	1,275.5	209.5	1,485.0	140.0	1,127.5	2,752.5
Estimated Working Capacity	892.9	146.7	1,039.6	98.0	789.2	1,926.8
23-24 % of Wkg Cap	77%	101%	81%	1%	50%	64%

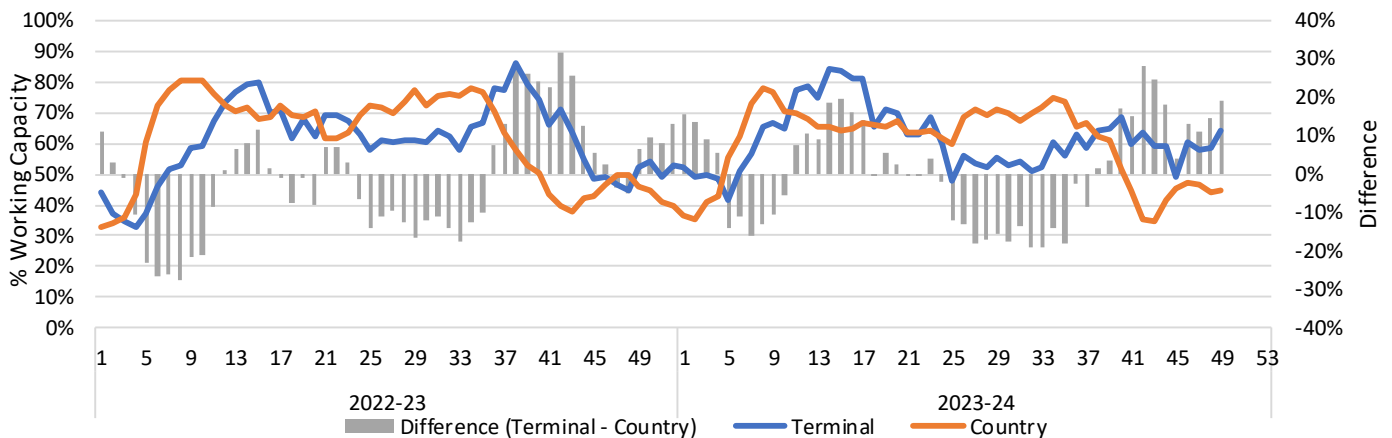
1-A2 Weekly Country Stocks in Store



1-B2 Weekly Terminal Stocks in Store



1-C Weekly Stock Balance

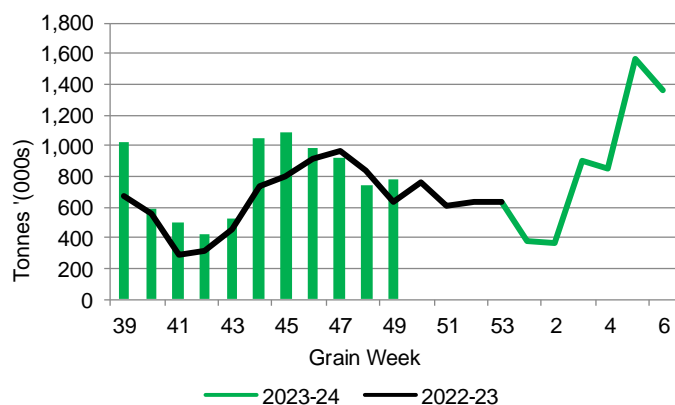


2. Country Deliveries

2-A Country Deliveries ('000 tonnes) – Week 49

	MB	SK	AB	BC	Total
2023-24	119.8	422.5	229.8	3.8	775.9
2022-23	129.5	345.6	153.4	3.8	632.3
4 Wk Avg	138.6	467.3	243.3	3.2	852.3
Var % to Last Year	-8%	22%	50%	0%	23%
Var % To 4 Wk Avg	-14%	-10%	-6%	19%	-9%

2-B 2023-24 Weekly Country Deliveries



3. Port Performance

3-A Weekly Unloads by Port (Cars) – This Year for Week 49, 4-Week Moving Average and Variances

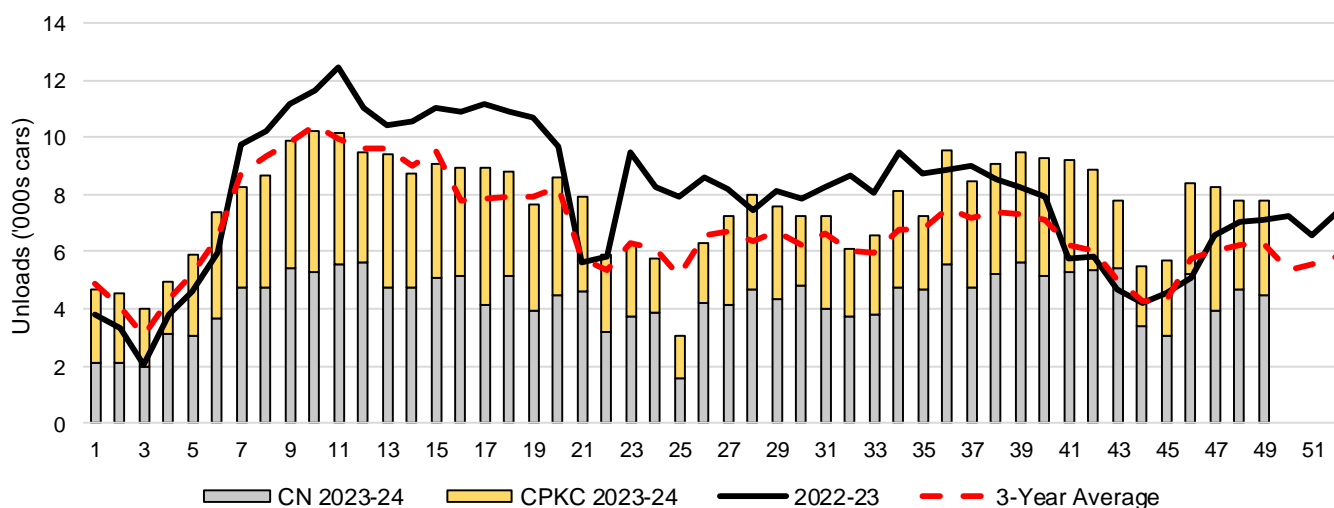
	Vancouver	Prince Rupert	West Coast	Thunder Bay	Churchill	Total
2023-24	5,373	942	6,315	1,500	-	7,815
2022-23	4,639	589	5,228	1,878	-	7,106
4-Wk Avg.	5,436	819	6,255	1,833	-	8,088
Var % to Last Year	16%	60%	21%	-20%	n/a	10%
Var % to 4-Wk Avg.	-1%	15%	1%	-18%	n/a	-3%

3-B Terminal Unloads by Port – This Year-to-Date as at Week 49 and Variances

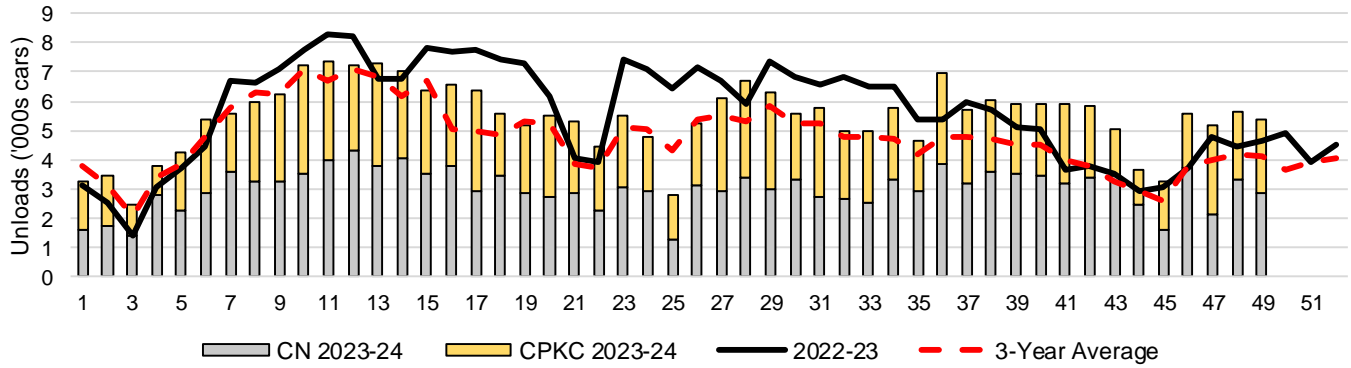
YTD Unloads (cars)	Vancouver	Prince Rupert	West Coast	Thunder Bay	Churchill	Total
2023-24	266,936	34,055	300,991	73,150	-	374,141
2022-23	276,978	45,430	322,408	66,831	-	389,239
3-Yr Avg	234,254	34,580	268,834	65,173	-	334,008
Var % to Last Year	-4%	-25%	-7%	9%	n/a	-4%
Var % to 3-Yr Avg	14%	-2%	12%	12%	n/a	12%

YTD Unloads ('000 tonnes)	Vancouver	Prince Rupert	West Coast	Thunder Bay	Churchill	Total
2023-24	25,717.4	3,289.4	29,006.8	7,075.7	-	36,082.5
2022-23	26,800.3	4,359.6	31,159.9	6,451.8	-	37,611.7
3-Yr Avg.	22,508.6	3,305.3	25,813.9	6,280.8	-	32,094.7
Var % to Last Year	-4%	-25%	-7%	10%	n/a	-4%
Var % to 3-Yr Avg.	14%	0%	12%	13%	n/a	12%

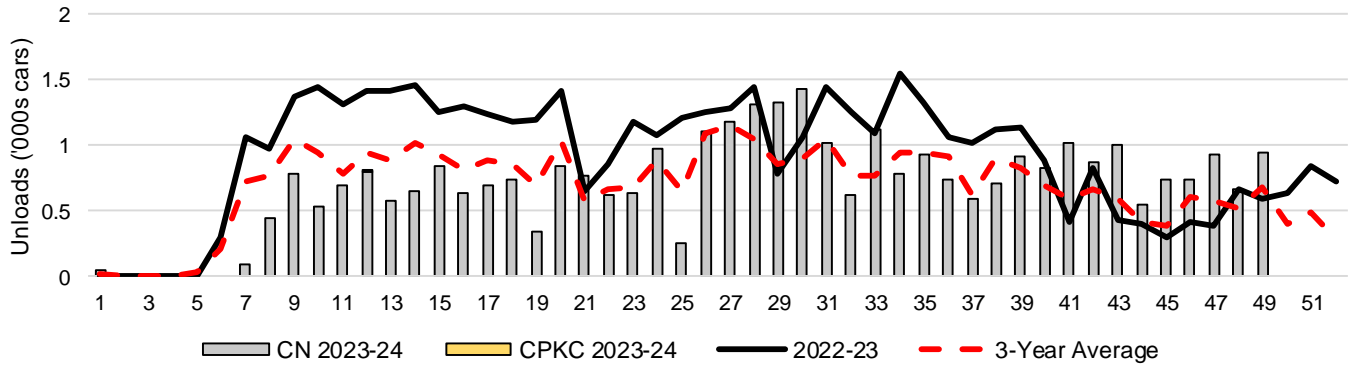
3-C Western Port Terminal Unloads (cars), Total by Carrier, This Year vs. Last Year and the 3-Year Average



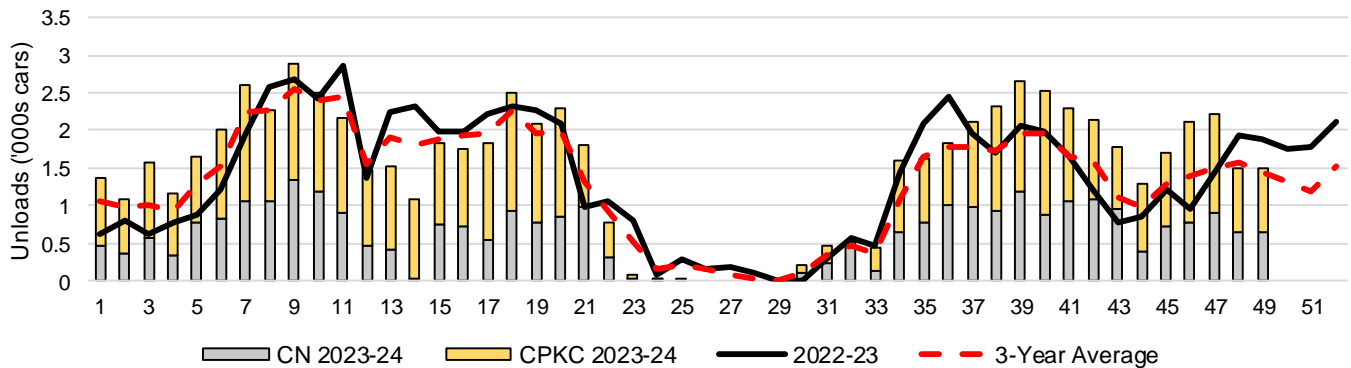
3-D Vancouver Terminal Unloads (cars), Total by Carrier, This Year vs. Last Year and the 3-Year Average



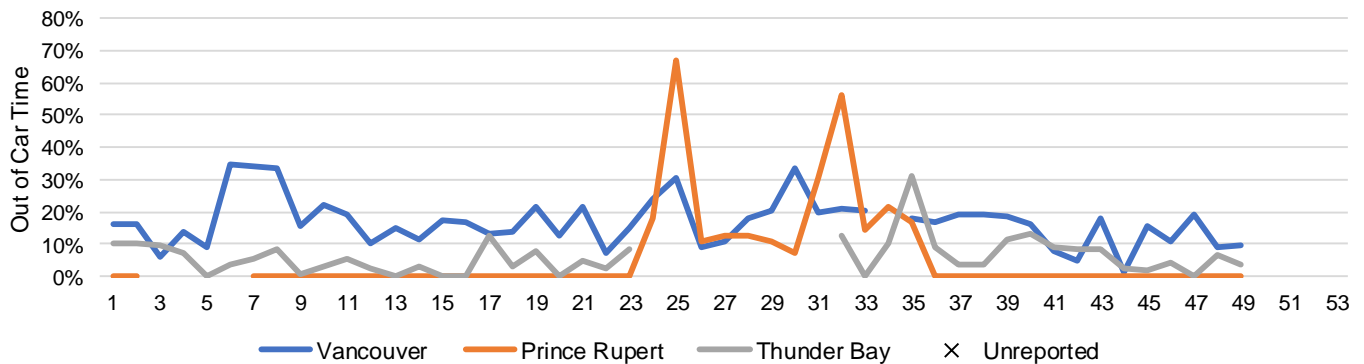
3-E Prince Rupert Terminal Unloads (cars), Total by Carrier, This Year vs. Last Year and the 3-Year Average



3-F Thunder Bay Terminal Unloads (cars), Total by Carrier, This Year vs. Last Year and the 3-Year Average



3-G Weekly Out-of-Car Time (% of hours out-of-cars / total hours working)



Out-of-car time is measured weekly and uses data from terminal elevators on the total number of hours the facilities are open & staffed (including overtime hours) and the corresponding number of hours that terminals have no railcars available to unload. The measure is expressed as a percentage (hours without cars to the total number of hours working).

3-H Monthly Unloads (cars) – This year vs. Last Year and the 3-Year Average to Week 48 2023-24

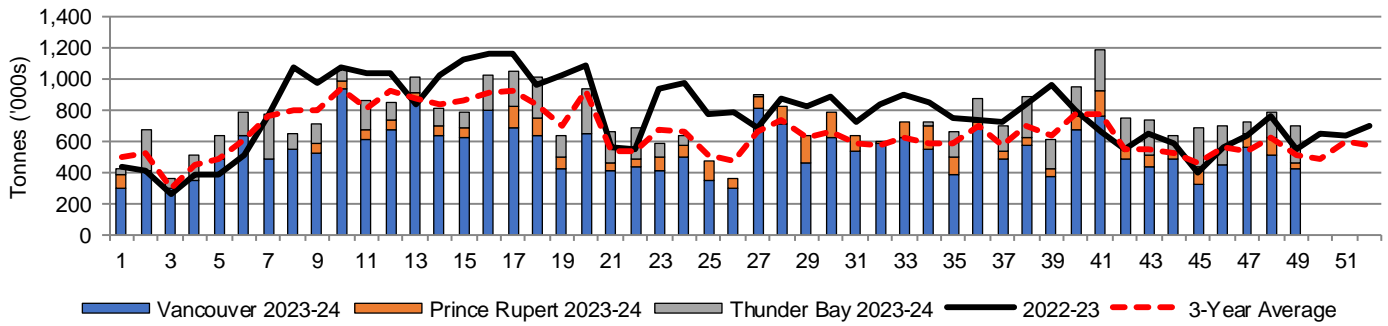
Months	Aug	Sep	Oct	Nov	Dec	Jan	Feb	Mar	Apr	May	Jun	Jul
Weeks	1-5	6-9	10-13	14-18	19-22	23-27	28-31	32-35	36-39	40-44	45-48	49-53
2023-24	24,066	34,250	39,311	44,460	30,025	28,628	30,071	28,076	36,528	40,675	30,236	-
2022-23	17,592	37,081	45,507	54,625	31,875	42,443	31,747	34,971	34,634	28,378	23,280	28,334
3-Yr Avg.	21,619	34,406	39,606	42,112	27,333	30,880	25,934	25,485	29,334	28,645	22,382	21,701
Var % to Last Year	37%	-8%	-14%	-19%	-6%	-33%	-5%	-20%	5%	43%	30%	
Var % to 3-Yr Avg.	11%	0%	-1%	6%	10%	-7%	16%	10%	25%	42%	35%	

4. Shipments

4-A Shipments from Port Terminals ('000 tonnes) – This Year-to-Date as of Week 49 and Variance to Last Year-to-Date

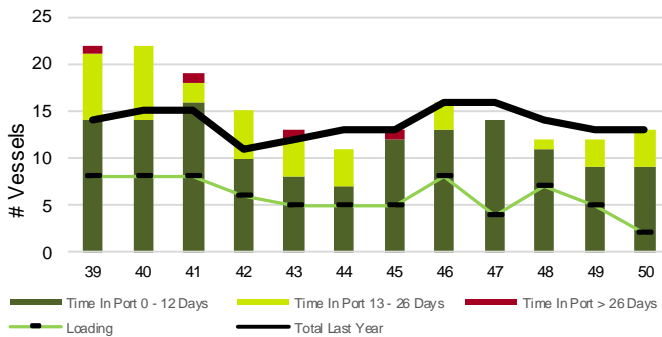
	Vancouver	Prince Rupert	West Coast	Thunder Bay	Churchill	Total
2023-24	26,422.2	3,248.9	29,671.1	6,622.9	-	36,294.0
2022-23	27,341.7	4,319.3	31,661.0	6,329.6	-	37,990.6
3-Yr Avg.	22,831.9	3,241.1	26,073.1	6,091.6	-	32,164.7
Var % to Last Year		-3%	-25%	-6%	n/a	-4%
Var % to 3-Yr Avg.		16%	0%	14%	n/a	13%

4-B Weekly Shipments ('000 tonnes) from Port Terminals – This Year vs Last Year and the 3-Year Average

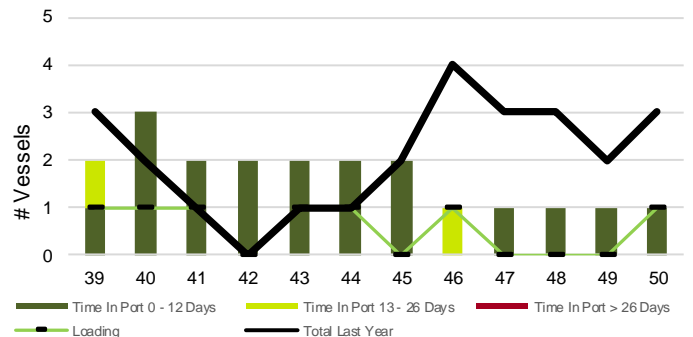


5. Vessels

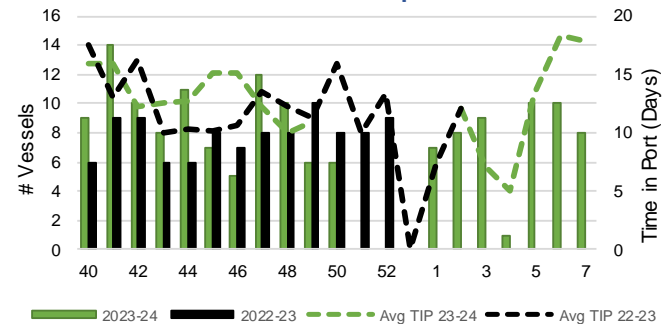
5-A Vessel Lineup at Vancouver as of Week 50 2023-24



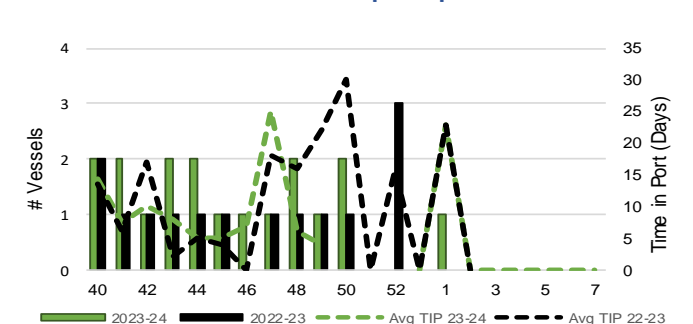
5-C Vessel Lineup at Prince Rupert as of Week 50 2023-24



5-B Vessels Cleared at Vancouver up to Week 50 2023-24



5-D Vessels Cleared at Prince Rupert up to Week 50 2023-24



Note: The 'Time in Port' measure for 6-A and 6-C is calculated as how long each vessel in the lineup has been in port as at Sunday 23:59 of that grain week. The 'Avg Time in Port (TIP)' measure for 6-B and 6-D is the average number of days that all vessels which cleared that week were in port. These measures use vessel data provided by the BC Chamber of Shipping and Pacific Pilotage Authority.