

Grain Monitoring Program

Weekly Performance Update

July 23, 2024

For Grain Week 50 2023-24 CY
July 8, 2024 to July 14, 2024

Summary

| | Week 50 | Week 49 | Var. from Last Year | |
|---|-----------------------|----------------|----------------------------|------|
| 1. Stocks in Store ('000 tonnes) | | | | |
| Country Elevators | ↑ 2,711.5 | 2,427.2 | 10% | |
| % of Working Capacity | 50% | 45% | | |
| Terminal Elevators | ↓ 1,160.1 | 1,237.6 | 11% | |
| % of Working Capacity | 60% | 64% | | |
| 2. Country Deliveries ('000 tonnes) | | | | |
| Country Deliveries | ↑ 905.3 | 775.9 | 19% | |
| 3. Port Performance (Cars) | | | | |
| Vancouver Unloads | ↓ 3,420 | 5,373 | -30% | |
| Prince Rupert Unloads | ↓ 890 | 942 | 41% | |
| Churchill Unloads | — 0 | 0 | n/a | |
| Thunder Bay Unloads | ↑ 1,595 | 1,500 | -10% | |
| Total Weekly Unloads | ↓ 5,905 | 7,815 | -19% | |
| 4-Week Rolling Average | ↓ 7,458 | 8,088 | n/a | |
| Var. to 4-Week Rolling Average | -21% | -3% | n/a | |
| YTD Unloads | 380,046 | 374,141 | -4% | |
| Weekly Out-of-Car Time | ↑ 7.8% | 7.7% | -58.4% | |
| 4. Terminal Shipments Year-to-Date ('000 tonnes) | | | | |
| Vancouver | ↑ 26,767.5 | 26,422.2 | -4% | |
| Prince Rupert | ↑ 3,351.2 | 3,248.9 | -24% | |
| Churchill | — 0.0 | 0.0 | n/a | |
| Thunder Bay | ↑ 6,767.9 | 6,622.9 | 4% | |
| Total Western Canada | ↑ 36,886.6 | 36,294.0 | -5% | |
| 5. Vessels as at Jul 21, 2024 | | | | |
| | Week 51 | Week 50 | Var. from Last Year | |
| Vancouver | Vessel Lineup in port | ↑ 17 | 13 | 0% |
| | Vessels Cleared | ↓ 5 | 6 | -25% |
| | Vessels Arrived | ↑ 9 | 7 | -13% |
| Pr. Rupert | Vessel Lineup in port | ↓ 0 | 1 | -67% |
| | Vessels Cleared | — 2 | 2 | 100% |
| | Vessels Arrived | ↓ 1 | 2 | 0% |
| Vessels Inbound Jul 22, 2024 to Jul 28, 2024 (Week 52) | | | | |
| Vancouver | 6 | | | |
| Prince Rupert | 4 | | | |

1. Stocks in Store: (Page 2)

- Country stocks increased to 2.71 MMT in Week 50 utilizing 50% of the system's working capacity. Space in primary elevators is good.
- Total western port terminal stocks decreased to 1.16 MMT in Week 50, utilizing 60% of the working capacity.

2. Country Deliveries: (Page 3)

- Deliveries to primary elevators were 0.91 MMT in Week 50.

3. Port Performance: (Pages 3-5)

- Total western port unloads were 21% lower than the 4-week moving average and 19% lower than Week 50 last year.
- West Coast unloads were 4,310 cars (Vancouver 3,420 and Prince Rupert 890), 25% lower than the 4-week moving average and 22% lower than Week 50 last year.
- Thunder Bay unloads were 1,595 cars, 6% lower than the 4-week moving average and 10% lower than Week 50 last year.
- Year-to-date total western port unloads are 4% lower than the same period last year. The corresponding tonnage is 4% lower than the same period last year.
- The total average terminal out-of-car time (OCT) increased to 7.8% from 7.7% the previous week. The OCT for Week 50 was 9.3% at Vancouver and 2.8% at Thunder Bay. At the time of publishing, Prince Rupert had not yet reported Week 50 OCT.

5. Shipments: (Page 5)

- Year-to-date Western Canadian shipments from port terminal elevators at Week 50 are 5% lower than the same period last year and 13% higher than the 3-year average.

6. Vessels: (Page 5)

- Vancouver vessel lineup for Week 51 2023-24 increased to 17 vessels (The current one-year average at Vancouver is 20 vessels). Of the 17, 6 were at berth, 7 were anchored at English Bay and 4 were anchored at Vancouver Island.
- Prince Rupert vessel lineup for Week 51 2023-24 decreased to 0 vessels (The current one-year average at Prince Rupert is 2 vessels).
- Vessels cleared from Vancouver was 5 and from Prince Rupert was 2 in Week 51 2023-24.

1. Stocks in Store

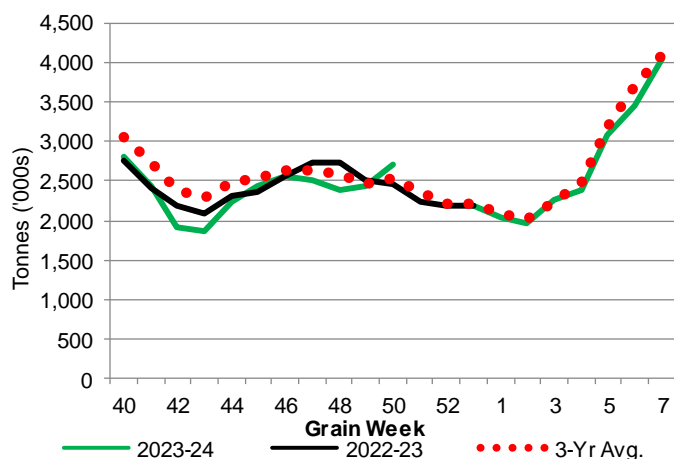
1-A1 Country Stocks ('000 tonnes) – Week 50

| | MB | SK | AB | BC | Total |
|----------------------------|---------|---------|---------|------|---------|
| 2023-24 | 516.2 | 1,423.0 | 761.8 | 10.5 | 2,711.5 |
| 2022-23 | 558.0 | 1,231.4 | 648.5 | 21.7 | 2,459.6 |
| 3-Yr Avg. | 504.7 | 1,313.7 | 699.5 | 15.0 | 2,532.9 |
| Var % - LY | -7% | 16% | 17% | -52% | 10% |
| Var % 3-Yr Avg. | 2% | 8% | 9% | -30% | 7% |
| Storage Capacity | 1,610.0 | 4,224.4 | 2,460.4 | 39.7 | 8,334.5 |
| Estimated Working Capacity | 1,046.5 | 2,745.9 | 1,599.2 | 25.8 | 5,417.4 |
| 23-24 % of Wkg Cap | 49% | 52% | 48% | 41% | 50% |

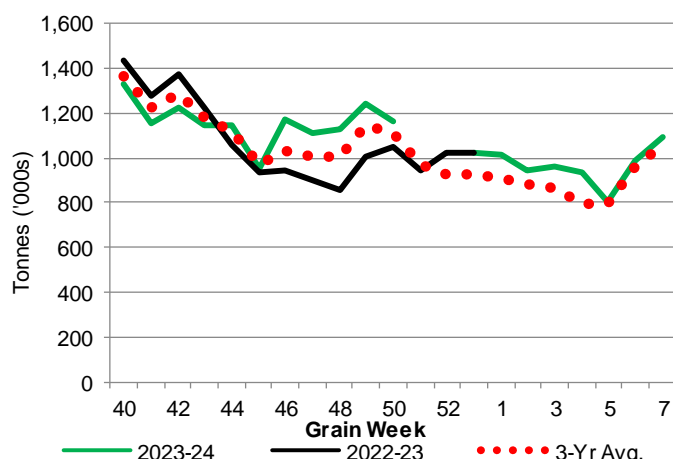
1-B1 Terminal Stocks ('000 tonnes) – Week 50

| | VC | PR | West Coast | CH | TB | Total |
|----------------------------|---------|-------|------------|-------|---------|---------|
| 2023-24 | 589.5 | 148.0 | 737.5 | 0.7 | 421.9 | 1,160.1 |
| 2022-23 | 618.7 | 107.9 | 726.6 | 0.7 | 320.4 | 1,047.7 |
| 3-Yr Avg. | 626.6 | 123.5 | 750.1 | 0.7 | 358.1 | 1,108.9 |
| Var % - LY | -5% | 37% | 2% | 0% | 32% | 11% |
| Var % 3-Yr Avg. | -6% | 20% | -2% | 0% | 18% | 5% |
| Storage Capacity | 1,275.5 | 209.5 | 1,485.0 | 140.0 | 1,127.5 | 2,752.5 |
| Estimated Working Capacity | 892.9 | 146.7 | 1,039.6 | 98.0 | 789.2 | 1,926.8 |
| 23-24 % of Wkg Cap | 66% | 101% | 71% | 1% | 53% | 60% |

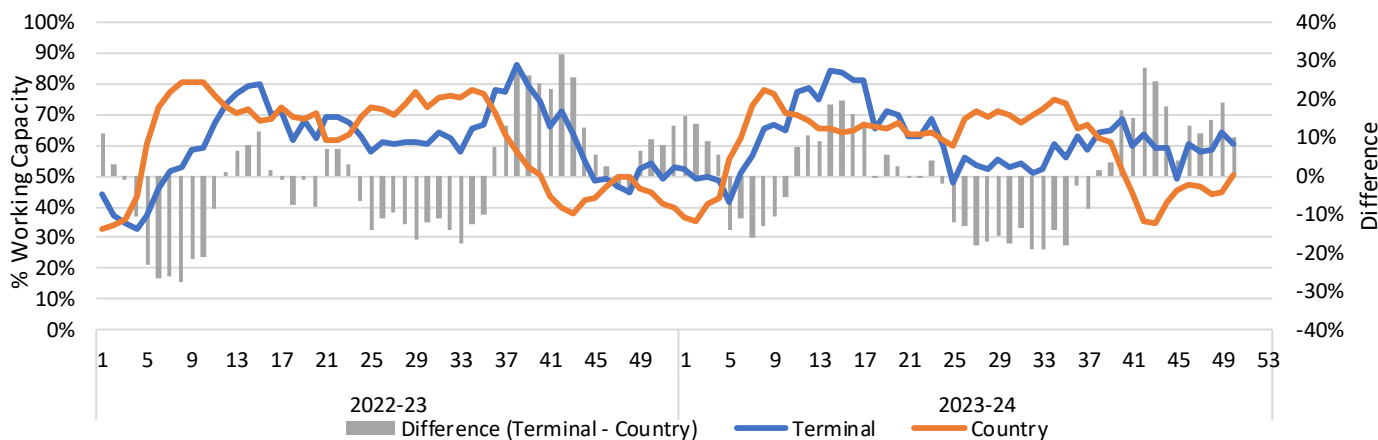
1-A2 Weekly Country Stocks in Store



1-B2 Weekly Terminal Stocks in Store



1-C Weekly Stock Balance

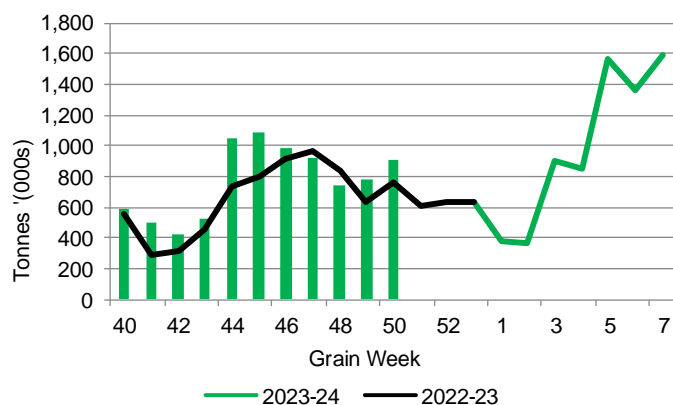


2. Country Deliveries

2-A Country Deliveries ('000 tonnes) – Week 50

| | MB | SK | AB | BC | Total |
|--------------------|-------|-------|-------|------|-------|
| 2023-24 | 149.7 | 513.2 | 240.9 | 1.5 | 905.3 |
| 2022-23 | 158.9 | 389.0 | 208.2 | 3.1 | 759.2 |
| 4 Wk Avg | 134.9 | 463.2 | 232.5 | 2.6 | 833.1 |
| Var % to Last Year | -6% | 32% | 16% | -52% | 19% |
| Var % To 4 Wk Avg | 11% | 11% | 4% | -42% | 9% |

2-B 2023-24 Weekly Country Deliveries



3. Port Performance

3-A Weekly Unloads by Port (Cars) – This Year for Week 50, 4-Week Moving Average and Variances

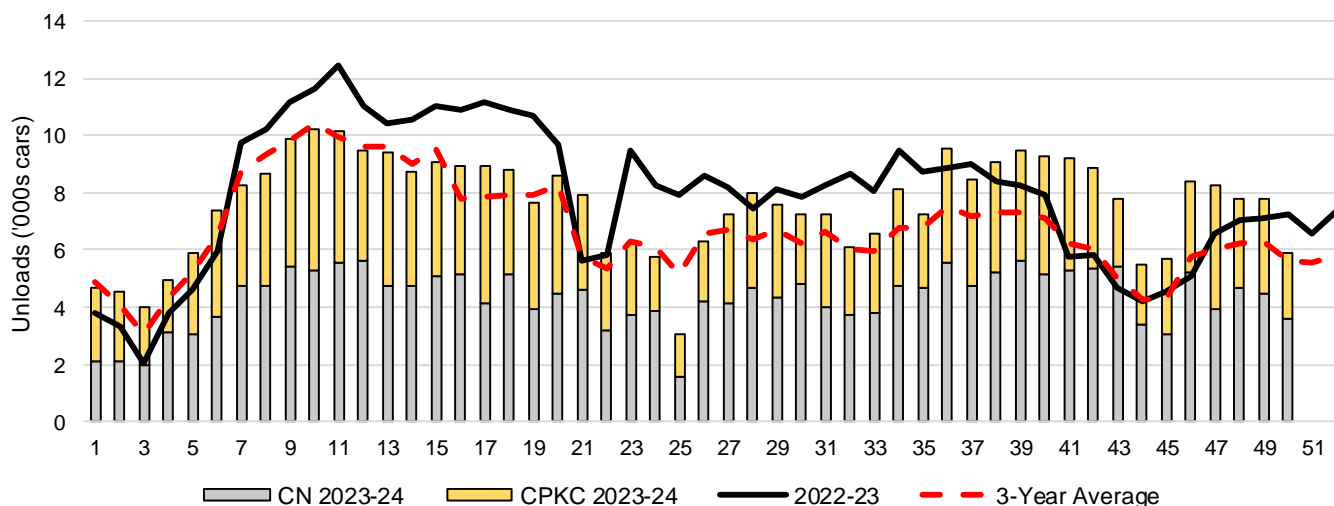
| | Vancouver | Prince Rupert | West Coast | Thunder Bay | Churchill | Total |
|--------------------|-----------|---------------|------------|-------------|-----------|-------|
| 2023-24 | 3,420 | 890 | 4,310 | 1,595 | - | 5,905 |
| 2022-23 | 4,882 | 632 | 5,514 | 1,763 | - | 7,277 |
| 4-Wk Avg. | 4,902 | 856 | 5,757 | 1,701 | - | 7,458 |
| Var % to Last Year | -30% | 41% | -22% | -10% | n/a | -19% |
| Var % to 4-Wk Avg. | -30% | 4% | -25% | -6% | n/a | -21% |

3-B Terminal Unloads by Port – This Year-to-Date as at Week 50 and Variances

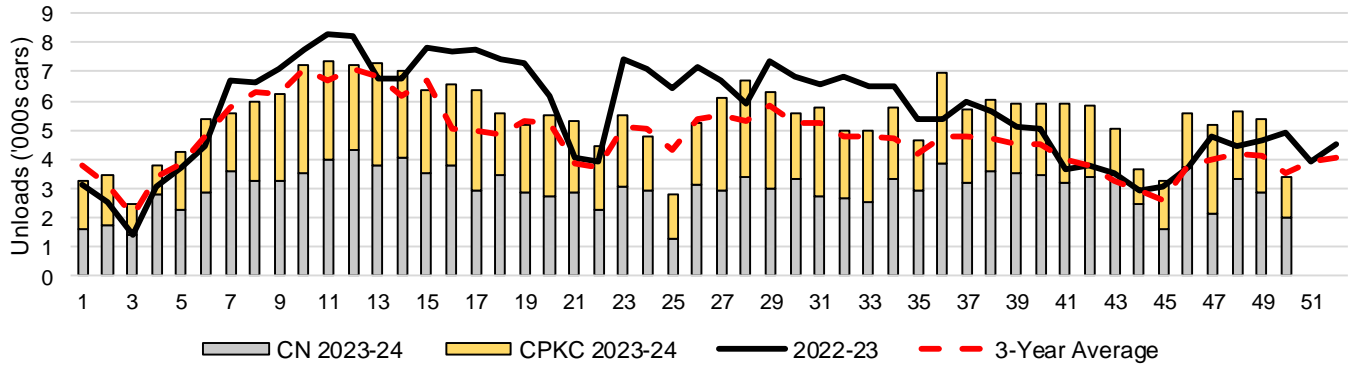
| YTD Unloads (cars) | Vancouver | Prince Rupert | West Coast | Thunder Bay | Churchill | Total |
|--------------------|-----------|---------------|------------|-------------|-----------|---------|
| 2023-24 | 270,356 | 34,945 | 305,301 | 74,745 | - | 380,046 |
| 2022-23 | 281,764 | 46,062 | 327,826 | 68,594 | - | 396,420 |
| 3-Yr Avg | 237,714 | 35,271 | 272,985 | 66,601 | - | 339,586 |
| Var % to Last Year | -4% | -24% | -7% | 9% | n/a | -4% |
| Var % to 3-Yr Avg | 14% | -1% | 12% | 12% | n/a | 12% |

| YTD Unloads ('000 tonnes) | Vancouver | Prince Rupert | West Coast | Thunder Bay | Churchill | Total |
|---------------------------|-----------|---------------|------------|-------------|-----------|----------|
| 2023-24 | 26,039.2 | 3,377.2 | 29,416.4 | 7,232.8 | - | 36,649.2 |
| 2022-23 | 27,257.6 | 4,419.3 | 31,676.9 | 6,619.9 | - | 38,296.8 |
| 3-Yr Avg. | 22,839.6 | 3,372.0 | 26,211.5 | 6,419.3 | - | 32,630.8 |
| Var % to Last Year | -4% | -24% | -7% | 9% | n/a | -4% |
| Var % to 3-Yr Avg. | 14% | 0% | 12% | 13% | n/a | 12% |

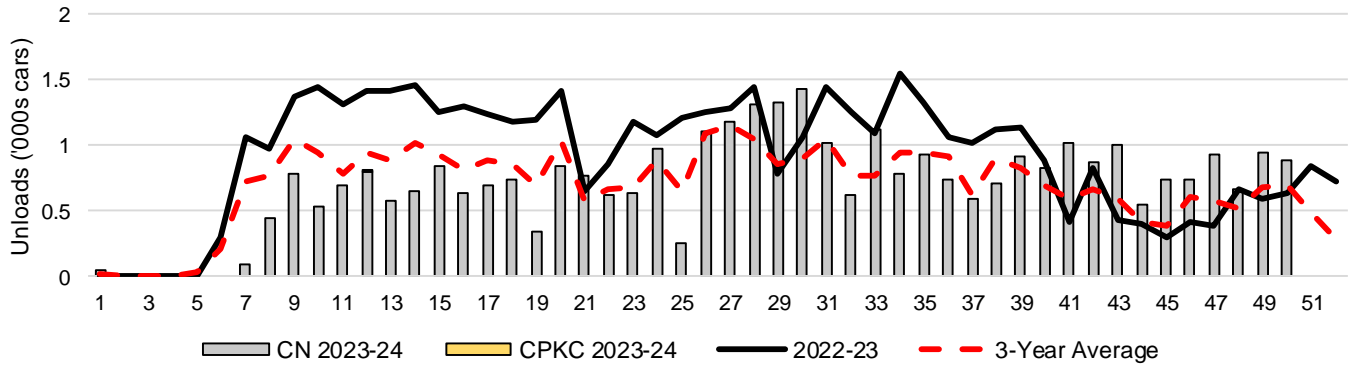
3-C Western Port Terminal Unloads (cars), Total by Carrier, This Year vs. Last Year and the 3-Year Average



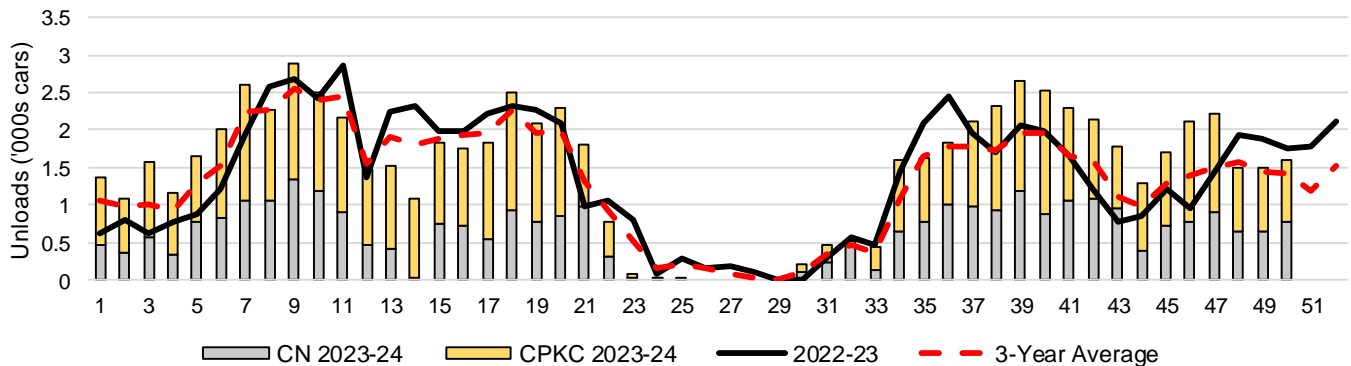
3-D Vancouver Terminal Unloads (cars), Total by Carrier, This Year vs. Last Year and the 3-Year Average



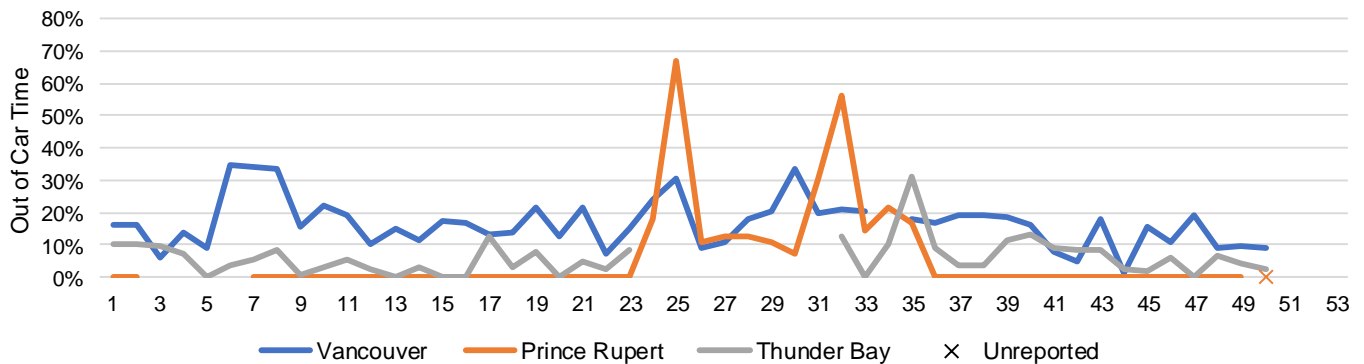
3-E Prince Rupert Terminal Unloads (cars), Total by Carrier, This Year vs. Last Year and the 3-Year Average



3-F Thunder Bay Terminal Unloads (cars), Total by Carrier, This Year vs. Last Year and the 3-Year Average



3-G Weekly Out-of-Car Time (% of hours out-of-cars / total hours working)



Out-of-car time is measured weekly and uses data from terminal elevators on the total number of hours the facilities are open & staffed (including overtime hours) and the corresponding number of hours that terminals have no railcars available to unload. The measure is expressed as a percentage (hours without cars to the total number of hours working).

3-H Monthly Unloads (cars) – This year vs. Last Year and the 3-Year Average to Week 48 2023-24

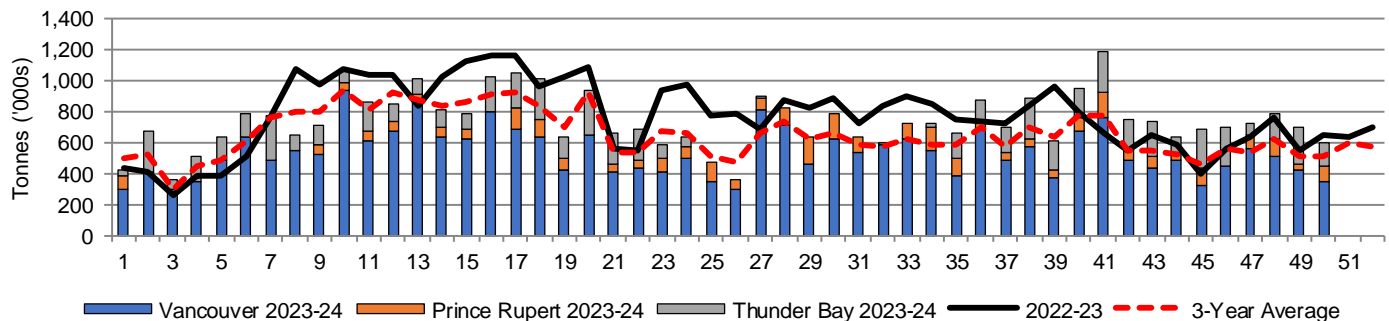
| Months | Aug | Sep | Oct | Nov | Dec | Jan | Feb | Mar | Apr | May | Jun | Jul |
|--------------------|--------|--------|--------|--------|--------|--------|--------|--------|--------|--------|--------|--------|
| Weeks | 1-5 | 6-9 | 10-13 | 14-18 | 19-22 | 23-27 | 28-31 | 32-35 | 36-39 | 40-44 | 45-48 | 49-53 |
| 2023-24 | 24,066 | 34,250 | 39,311 | 44,460 | 30,025 | 28,628 | 30,071 | 28,076 | 36,528 | 40,675 | 30,236 | - |
| 2022-23 | 17,592 | 37,081 | 45,507 | 54,625 | 31,875 | 42,443 | 31,747 | 34,971 | 34,538 | 28,378 | 23,280 | 28,334 |
| 3-Yr Avg. | 21,619 | 34,406 | 39,606 | 42,112 | 27,333 | 30,880 | 25,934 | 25,485 | 29,302 | 28,645 | 22,382 | 21,701 |
| Var % to Last Year | 37% | -8% | -14% | -19% | -6% | -33% | -5% | -20% | 6% | 43% | 30% | |
| Var % to 3-Yr Avg. | 11% | 0% | -1% | 6% | 10% | -7% | 16% | 10% | 25% | 42% | 35% | |

4. Shipments

4-A Shipments from Port Terminals ('000 tonnes) – This Year-to-Date as at Week 50 and Variance to Last Year-to-Date

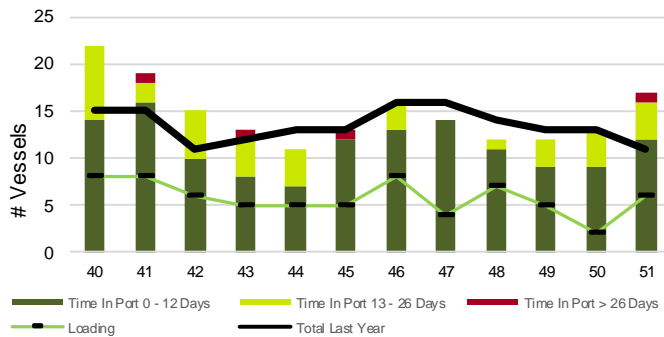
| | Vancouver | Prince Rupert | West Coast | Thunder Bay | Churchill | Total |
|--------------------|-----------|---------------|------------|-------------|-----------|----------|
| 2023-24 | 26,767.5 | 3,351.2 | 30,118.7 | 6,767.9 | - | 36,886.6 |
| 2022-23 | 27,763.4 | 4,394.3 | 32,157.7 | 6,479.7 | - | 38,637.4 |
| 3-Yr Avg. | 23,121.7 | 3,310.8 | 26,432.5 | 6,245.2 | - | 32,677.8 |
| Var % to Last Year | -4% | -24% | -6% | 4% | n/a | -5% |
| Var % to 3-Yr Avg. | 16% | 1% | 14% | 8% | n/a | 13% |

4-B Weekly Shipments ('000 tonnes) from Port Terminals – This Year vs Last Year and the 3-Year Average

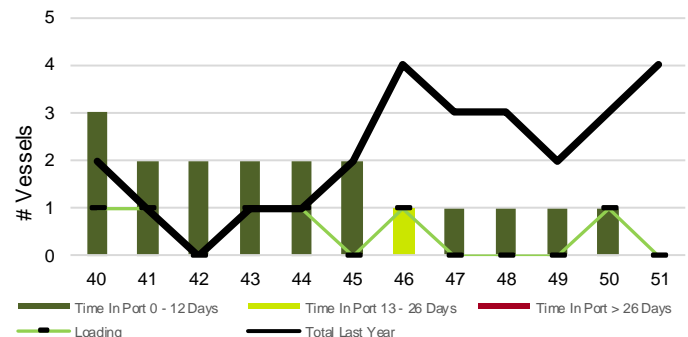


5. Vessels

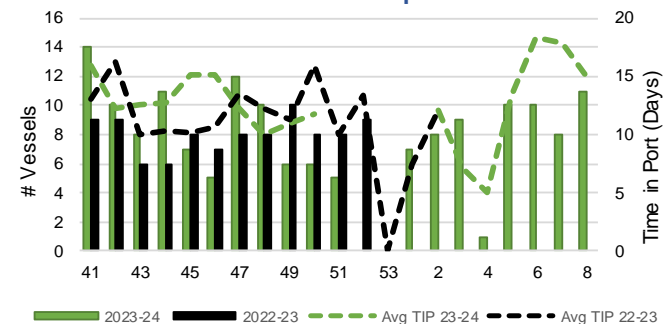
5-A Vessel Lineup at Vancouver as of Week 51 2023-24



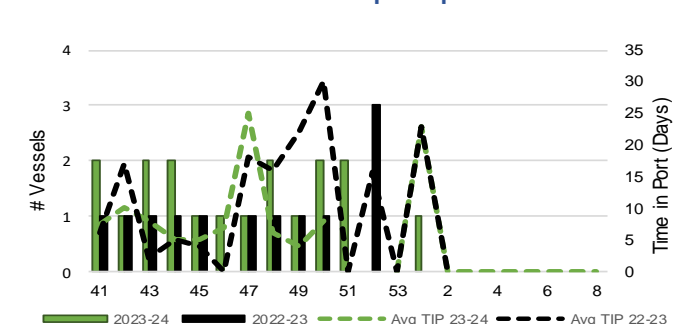
5-C Vessel Lineup at Prince Rupert as of Week 51 2023-24



5-B Vessels Cleared at Vancouver up to Week 51 2023-24



5-D Vessels Cleared at Prince Rupert up to Week 51 2023-24



Note: The 'Time in Port' measure for 6-A and 6-C is calculated as how long each vessel in the lineup has been in port as at Sunday 23:59 of that grain week. The 'Avg Time in Port (TIP)' measure for 6-B and 6-D is the average number of days that all vessels which cleared that week were in port. These measures use vessel data provided by the BC Chamber of Shipping and Pacific Pilotage Authority.