

Grain Monitoring Program

Weekly Performance Update

July 30, 2024

For Grain Week 51 2023-24 CY
July 15, 2024 to July 21, 2024

Summary

	Week 51	Week 50	Var. from Last Year	
1. Stocks in Store ('000 tonnes)				
Country Elevators	↓ 2,705.3	2,711.5	20%	
% of Working Capacity	50%	50%		
Terminal Elevators	↓ 1,068.5	1,160.1	13%	
% of Working Capacity	55%	60%		
2. Country Deliveries ('000 tonnes)				
Country Deliveries	↓ 766.2	905.3	26%	
3. Port Performance (Cars)				
Vancouver Unloads	↓ 2,906	3,420	-26%	
Prince Rupert Unloads	↓ 817	890	-4%	
Churchill Unloads	— 0	0	n/a	
Thunder Bay Unloads	↑ 1,661	1,595	-7%	
Total Weekly Unloads	↓ 5,384	5,905	-18%	
4-Week Rolling Average	↓ 6,731	7,458	n/a	
Var. to 4-Week Rolling Average	-20%	-21%	n/a	
YTD Unloads	385,429	380,045	-4%	
Weekly Out-of-Car Time	↑ 12.8%	7.8%	-35.9%	
4. Terminal Shipments Year-to-Date ('000 tonnes)				
Vancouver	↑ 27,148.6	26,767.5	-4%	
Prince Rupert	↑ 3,436.0	3,351.2	-23%	
Churchill	— 0.0	0.0	n/a	
Thunder Bay	↑ 6,912.6	6,767.9	5%	
Total Western Canada	↑ 37,497.2	36,886.6	-5%	
5. Vessels as at Jul 28, 2024				
	Week 52	Week 51	Var. from Last Year	
Vancouver	Vessel Lineup in port	↓ 14	17	17%
	Vessels Cleared	↑ 9	5	0%
	Vessels Arrived	↓ 6	9	-40%
Pr. Rupert	Vessel Lineup in port	↑ 4	0	300%
	Vessels Cleared	↓ 0	2	-100%
	Vessels Arrived	↑ 4	1	n/a
Vessels Inbound Jul 29, 2024 to Jul 31, 2024 (Week 53)				
Vancouver	3			
Prince Rupert	1			

1. Stocks in Store: (Page 2)

- Country stocks decreased to 2.71 MMT in Week 51 utilizing 50% of the system's working capacity. Space in primary elevators is good.
- Total western port terminal stocks decreased to 1.07 MMT in Week 51, utilizing 55% of the working capacity.

2. Country Deliveries: (Page 3)

- Deliveries to primary elevators were 0.77 MMT in Week 51.

3. Port Performance: (Pages 3-5)

- Total western port unloads were 20% lower than the 4-week moving average and 18% lower than Week 51 last year.
- West Coast unloads were 3,723 cars (Vancouver 2,906 and Prince Rupert 817), 28% lower than the 4-week moving average and 22% lower than Week 51 last year.
- Thunder Bay unloads were 1,661 cars, 6% higher than the 4-week moving average and 7% lower than Week 51 last year.
- Year-to-date total western port unloads are 4% lower than the same period last year. The corresponding tonnage is 5% lower than the same period last year.
- The total average terminal out-of-car time (OCT) increased to 12.8% from 7.8% the previous week. The OCT for Week 51 was 14.0% at Vancouver and 9.4% at Thunder Bay. At the time of publishing, Prince Rupert had not yet reported Week 51 OCT.

5. Shipments: (Page 5)

- Year-to-date Western Canadian shipments from port terminal elevators at Week 51 are 5% lower than the same period last year and 13% higher than the 3-year average.

6. Vessels: (Page 5)

- Vancouver vessel lineup for Week 52 2023-24 decreased to 14 vessels (The current one-year average at Vancouver is 20 vessels). Of the 14, 5 were at berth, 5 were anchored at English Bay, 1 was anchored at Burrard Inlet and 3 were anchored at Vancouver Island.
- Prince Rupert vessel lineup for Week 52 2023-24 increased to 4 vessels (The current one-year average at Prince Rupert is 2 vessels).
- Vessels cleared from Vancouver was 9 and from Prince Rupert was 0 in Week 52 2023-24.

1. Stocks in Store

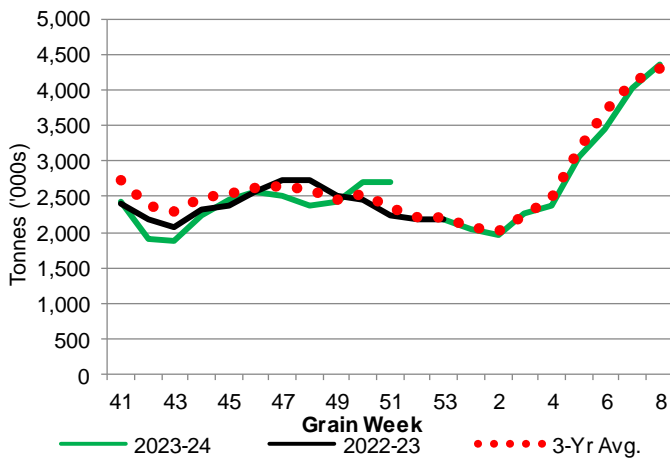
1-A1 Country Stocks ('000 tonnes) – Week 51

	MB	SK	AB	BC	Total
2023-24	511.6	1,502.8	680.0	10.9	2,705.3
2022-23	579.2	1,105.7	536.4	24.9	2,246.2
3-Yr Avg.	490.3	1,251.3	599.1	16.1	2,356.8
Var % - LY	-12%	36%	27%	-56%	20%
Var % 3-Yr Avg.	4%	20%	14%	-32%	15%
Storage Capacity	1,610.0	4,224.4	2,460.4	39.7	8,334.5
Estimated Working Capacity	1,046.5	2,745.9	1,599.2	25.8	5,417.4
23-24 % of Wkg Cap	49%	55%	43%	42%	50%

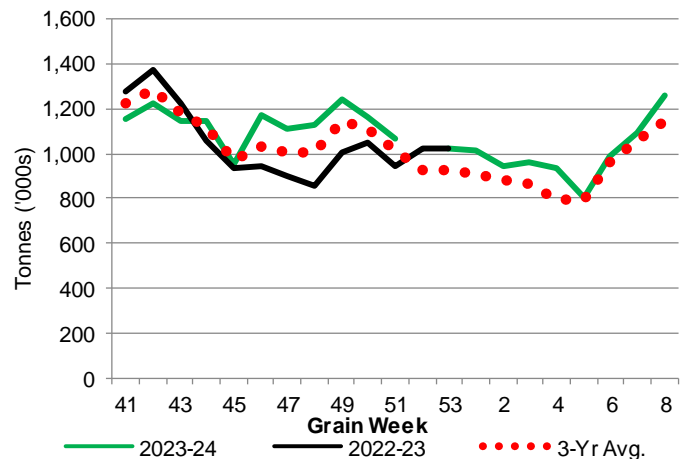
1-B1 Terminal Stocks ('000 tonnes) – Week 51

	VC	PR	West Coast	CH	TB	Total
2023-24	474.4	148.0	622.4	0.7	445.4	1,068.5
2022-23	442.5	121.4	563.9	0.7	377.9	942.5
3-Yr Avg.	504.4	122.7	627.1	0.7	384.9	1,012.7
Var % - LY	7%	22%	10%	0%	18%	13%
Var % 3-Yr Avg.	-6%	21%	-1%	0%	16%	6%
Storage Capacity	1,275.5	209.5	1,485.0	140.0	1,127.5	2,752.5
Estimated Working Capacity	892.9	146.7	1,039.6	98.0	789.2	1,926.8
23-24 % of Wkg Cap	53%	101%	60%	1%	56%	55%

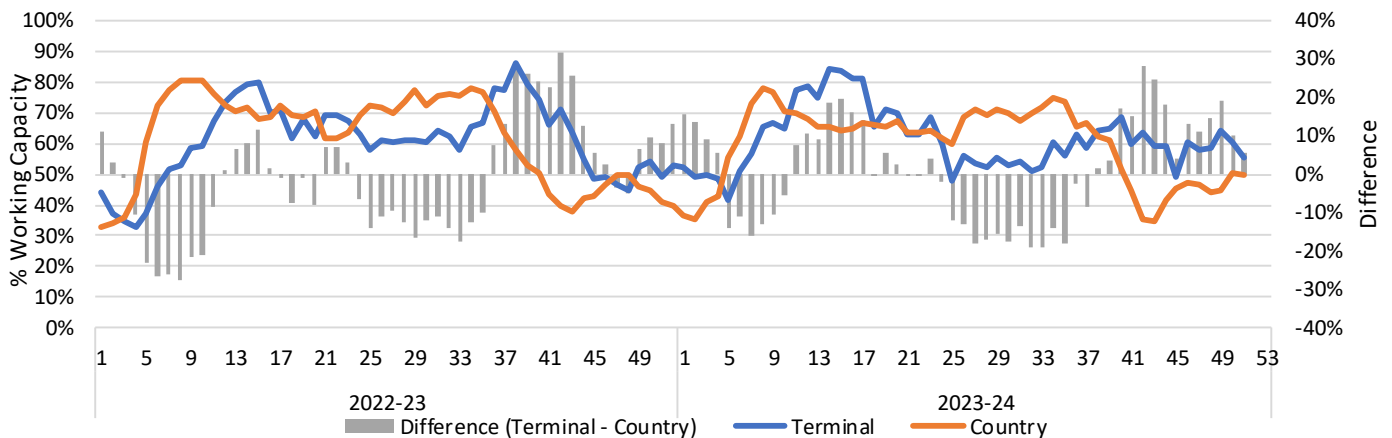
1-A2 Weekly Country Stocks in Store



1-B2 Weekly Terminal Stocks in Store



1-C Weekly Stock Balance

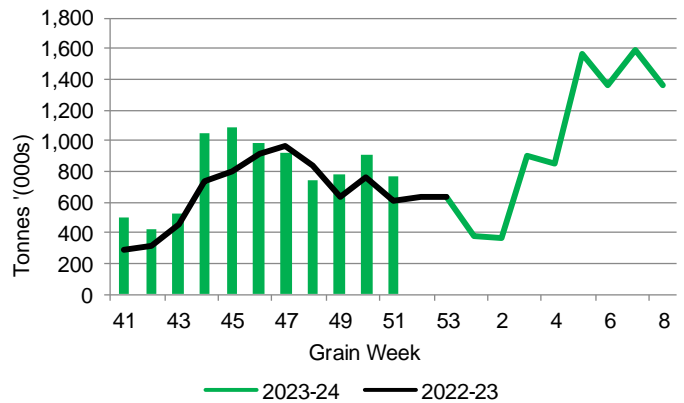


2. Country Deliveries

2-A Country Deliveries ('000 tonnes) – Week 51

	MB	SK	AB	BC	Total
2023-24	148.7	409.3	203.8	4.4	766.2
2022-23	140.4	298.8	164.0	4.9	608.1
4 Wk Avg	133.9	444.2	215.2	2.7	795.9
Var % to Last Year	6%	37%	24%	-10%	26%
Var % To 4 Wk Avg	11%	-8%	-5%	63%	-4%

2-B 2023-24 Weekly Country Deliveries



3. Port Performance

3-A Weekly Unloads by Port (Cars) – This Year for Week 51, 4-Week Moving Average and Variances

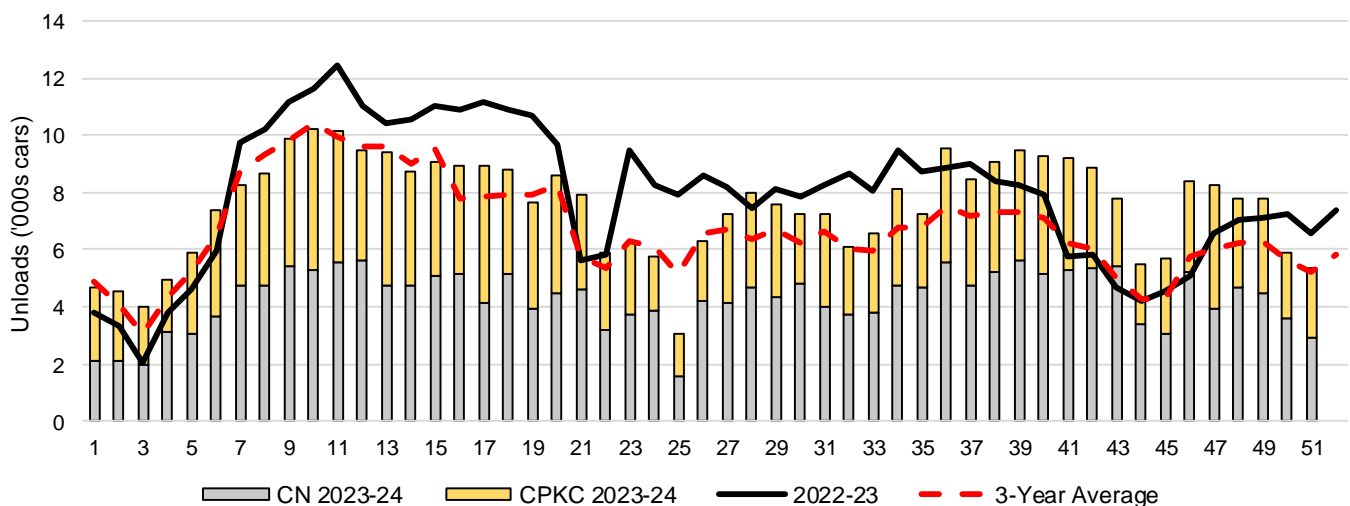
	Vancouver	Prince Rupert	West Coast	Thunder Bay	Churchill	Total
2023-24	2,906	817	3,723	1,661	-	5,384
2022-23	3,930	847	4,777	1,791	-	6,568
4-Wk Avg.	4,340	828	5,167	1,564	-	6,731
Var % to Last Year	-26%	-4%	-22%	-7%	n/a	-18%
Var % to 4-Wk Avg.	-33%	-1%	-28%	6%	n/a	-20%

3-B Terminal Unloads by Port – This Year-to-Date as at Week 51 and Variances

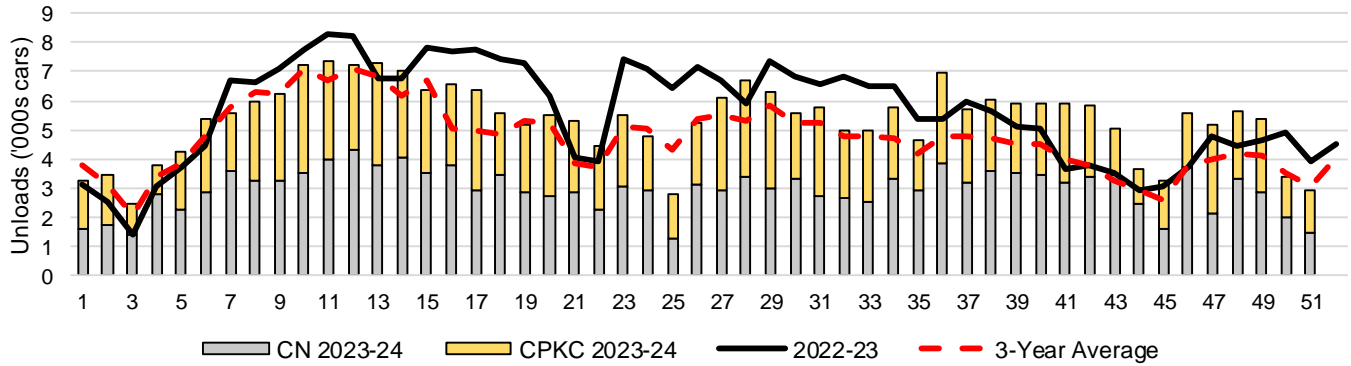
YTD Unloads (cars)	Vancouver	Prince Rupert	West Coast	Thunder Bay	Churchill	Total
2023-24	273,262	35,761	309,023	76,406	-	385,429
2022-23	285,694	46,908	332,602	70,385	-	402,987
3-Yr Avg	240,799	36,031	276,830	67,995	-	344,824
Var % to Last Year	-4%	-24%	-7%	9%	n/a	-4%
Var % to 3-Yr Avg	13%	-1%	12%	12%	n/a	12%

YTD Unloads ('000 tonnes)	Vancouver	Prince Rupert	West Coast	Thunder Bay	Churchill	Total
2023-24	26,315.3	3,455.1	29,770.4	7,397.2	-	37,167.6
2022-23	27,631.5	4,500.8	32,132.3	6,792.4	-	38,924.7
3-Yr Avg.	23,134.8	3,445.1	26,579.9	6,555.6	-	33,135.5
Var % to Last Year	-5%	-23%	-7%	9%	n/a	-5%
Var % to 3-Yr Avg.	14%	0%	12%	13%	n/a	12%

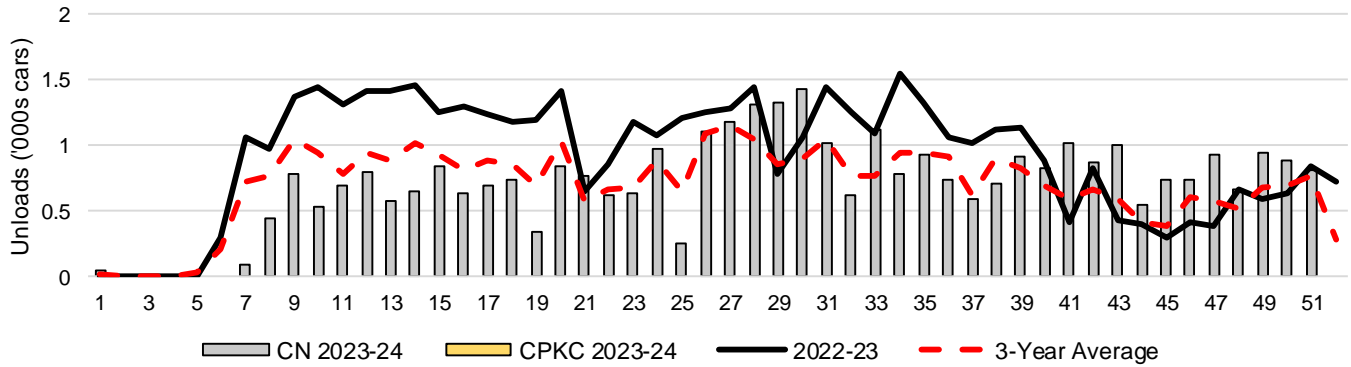
3-C Western Port Terminal Unloads (cars), Total by Carrier, This Year vs. Last Year and the 3-Year Average



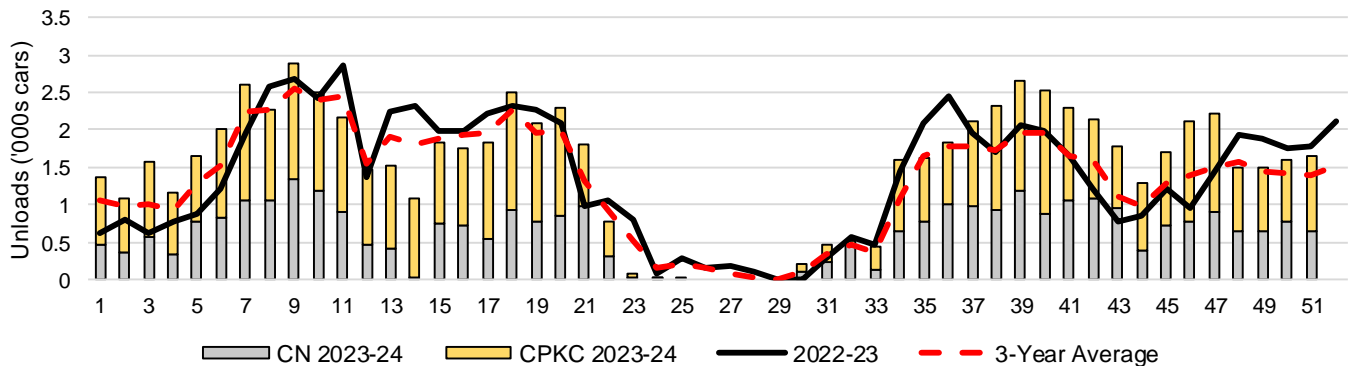
3-D Vancouver Terminal Unloads (cars), Total by Carrier, This Year vs. Last Year and the 3-Year Average



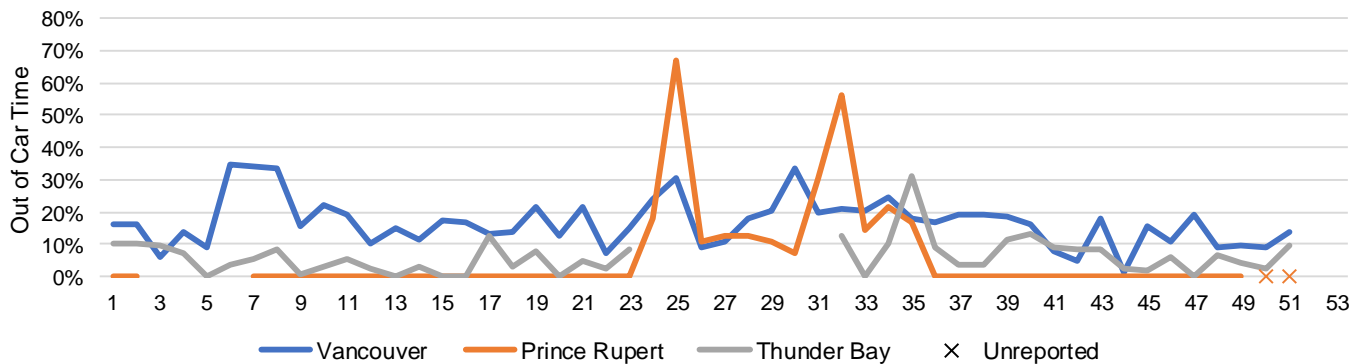
3-E Prince Rupert Terminal Unloads (cars), Total by Carrier, This Year vs. Last Year and the 3-Year Average



3-F Thunder Bay Terminal Unloads (cars), Total by Carrier, This Year vs. Last Year and the 3-Year Average



3-G Weekly Out-of-Car Time (% of hours out-of-cars / total hours working)



Out-of-car time is measured weekly and uses data from terminal elevators on the total number of hours the facilities are open & staffed (including overtime hours) and the corresponding number of hours that terminals have no railcars available to unload. The measure is expressed as a percentage (hours without cars to the total number of hours working).

3-H Monthly Unloads (cars) – This year vs. Last Year and the 3-Year Average to Week 48 2023-24

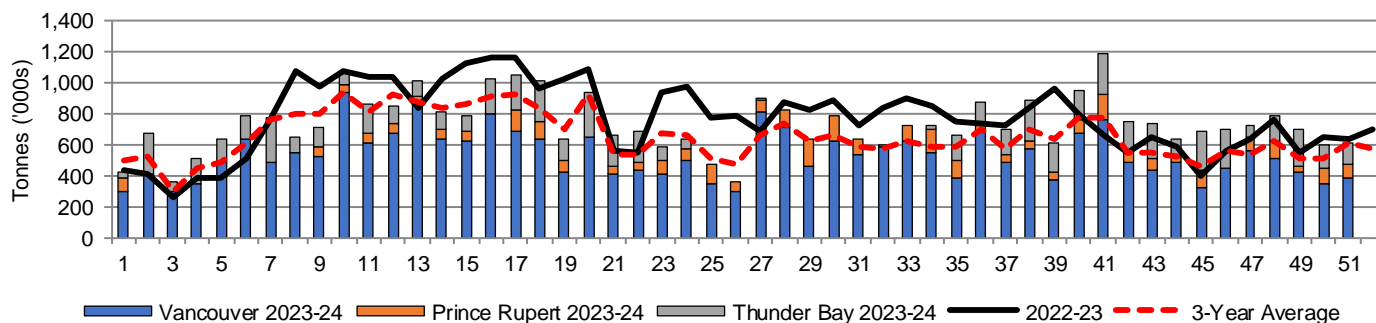
Months	Aug	Sep	Oct	Nov	Dec	Jan	Feb	Mar	Apr	May	Jun	Jul
Weeks	1-5	6-9	10-13	14-18	19-22	23-27	28-31	32-35	36-39	40-44	45-48	49-53
2023-24	24,066	34,250	39,310	44,460	30,025	28,628	30,071	28,076	36,528	40,675	30,236	-
2022-23	17,592	37,081	45,507	54,625	31,875	42,443	31,747	34,970	34,538	28,378	23,280	28,334
3-Yr Avg.	21,619	34,406	39,606	42,112	27,333	30,880	25,934	25,484	29,302	28,645	22,382	21,701
Var % to Last Year	37%	-8%	-14%	-19%	-6%	-33%	-5%	-20%	6%	43%	30%	
Var % to 3-Yr Avg.	11%	0%	-1%	6%	10%	-7%	16%	10%	25%	42%	35%	

4. Shipments

4-A Shipments from Port Terminals ('000 tonnes) – This Year-to-Date as at Week 51 and Variance to Last Year-to-Date

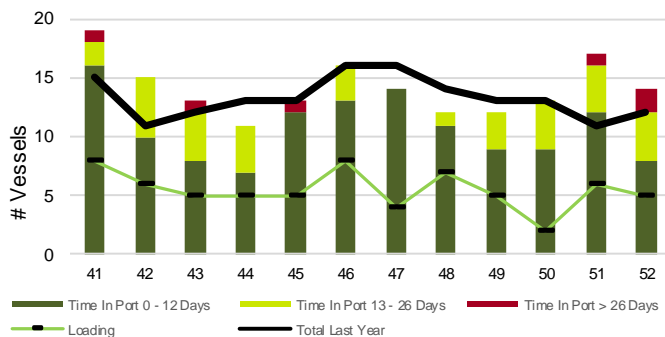
	Vancouver	Prince Rupert	West Coast	Thunder Bay	Churchill	Total
2023-24	27,148.6	3,436.0	30,584.6	6,912.6	-	37,497.2
2022-23	28,239.8	4,462.6	32,702.4	6,563.7	-	39,266.1
3-Yr Avg.	23,553.6	3,387.2	26,940.8	6,345.6	-	33,286.4
Var % to Last Year	-4%	-23%	-6%	5%	n/a	-5%
Var % to 3-Yr Avg.	15%	1%	14%	9%	n/a	13%

4-B Weekly Shipments ('000 tonnes) from Port Terminals – This Year vs Last Year and the 3-Year Average

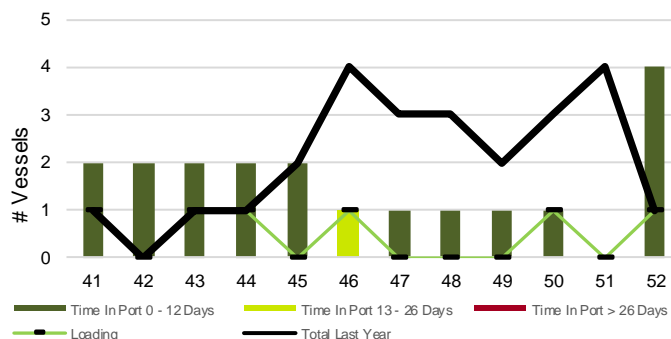


5. Vessels

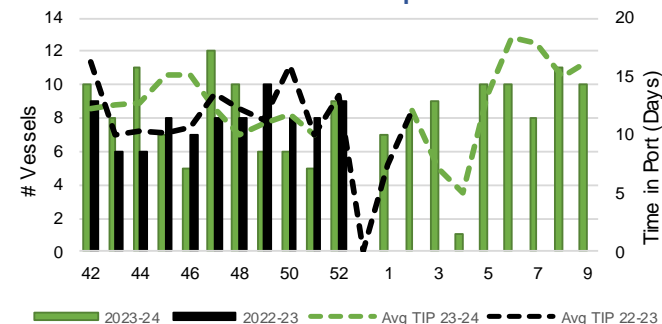
5-A Vessel Lineup at Vancouver as of Week 52 2023-24



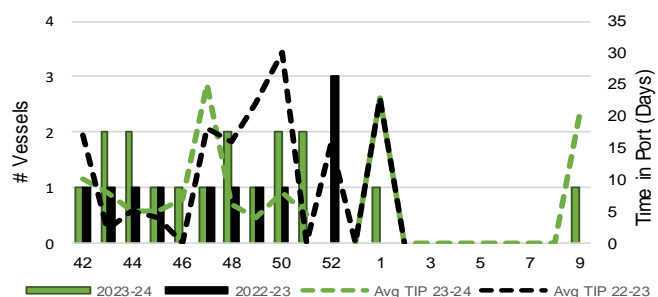
5-C Vessel Lineup at Prince Rupert as of Week 52 2023-24



5-B Vessels Cleared at Vancouver up to Week 52 2023-24



5-D Vessels Cleared at Prince Rupert up to Week 52 2023-24



Note: The 'Time in Port' measure for 6-A and 6-C is calculated as how long each vessel in the lineup has been in port as at Sunday 23:59 of that grain week. The 'Avg Time in Port (TIP)' measure for 6-B and 6-D is the average number of days that all vessels which cleared that week were in port. These measures use vessel data provided by the BC Chamber of Shipping and Pacific Pilotage Authority.