

Grain Monitoring Program

Weekly Performance Update

August 06, 2024

For Grain Week 52 2023-24 CY
July 22, 2024 to July 28, 2024

Summary

	Week 52	Week 51	Var. from Last Year	
1. Stocks in Store ('000 tonnes)				
Country Elevators		2,705.3		
% of Working Capacity		50%		
Terminal Elevators		1,068.5		
% of Working Capacity		55%		
2. Country Deliveries ('000 tonnes)				
Country Deliveries		766.2		
3. Port Performance (Cars)				
Vancouver Unloads	↑ 3,614	2,906	-20%	
Prince Rupert Unloads	↓ 520	817	-28%	
Churchill Unloads	— 0	0	n/a	
Thunder Bay Unloads	↓ 1,535	1,661	-28%	
Total Weekly Unloads	↑ 5,669	5,384	-23%	
4-Week Rolling Average	↓ 6,193	6,731	n/a	
Var. to 4-Week Rolling Average	-8%	-20%	n/a	
YTD Unloads	391,097	385,428	-5%	
Weekly Out-of-Car Time	↑ 36.1%	11.4%	155.3%	
4. Terminal Shipments Year-to-Date ('000 tonnes)				
Vancouver		27,148.6		
Prince Rupert		3,436.0		
Churchill		0.0		
Thunder Bay		6,912.6		
Total Western Canada		37,497.2		
5. Vessels as at Jul 31, 2024				
		Week 53	Week 52	Var. from Last Year
Vancouver	Vessel Lineup in port	↓ 12	14	0%
	Vessels Cleared	↓ 3	9	-67%
	Vessels Arrived	↓ 1	6	-90%
Pr. Rupert	Vessel Lineup in port	— 4	4	300%
	Vessels Cleared	↑ 1	0	-67%
	Vessels Arrived	↓ 1	4	n/a
Vessels Inbound Aug 01, 2024 to Aug 11, 2024 (Week 01)				
Vancouver		9		
Prince Rupert		0		

Note to Readers: Due to the Canadian Grain Commission (CGC) combining Weeks 52 & 53 in Grain Stats Weekly, this report cannot present a full set of measures for Week 52 in Sections 1, 2 and 4. All measures will be updated in subsequent GMP reports, once available.

Week 52 measures reflect the CN closures through Jasper.

1. Stocks in Store: (Page 2)

- Country stocks decreased to 2.71 MMT in Week 51 utilizing 50% of the system's working capacity. Space in primary elevators is good.
- Total western port terminal stocks decreased to 1.07 MMT in Week 51, utilizing 55% of the working capacity.

2. Country Deliveries: (Page 3)

- Deliveries to primary elevators were 0.77 MMT in Week 51.

3. Port Performance: (Pages 3-5)

- Total western port unloads were 8% lower than the 4-week moving average and 23% lower than Week 52 last year.
- West Coast unloads were 4,134 cars (Vancouver 3,614 and Prince Rupert 520), 11% lower than the 4-week moving average and 21% lower than Week 52 last year.
- Thunder Bay unloads were 1,535 cars, 2% lower than the 4-week moving average and 28% lower than Week 52 last year.
- Year-to-date total western port unloads are 5% lower than the same period last year. The corresponding tonnage is 5% lower than the same period last year.
- The total average terminal out-of-car time (OCT) increased to 36.1% from 11.4% the previous week. The OCT for Week 52 was 41.1% at Vancouver, 5.2% at Thunder Bay and 64.3% at Prince Rupert.

4. Shipments: (Page 5)

- Year-to-date Western Canadian shipments from port terminal elevators at Week 51 are 5% lower than the same period last year and 13% higher than the 3-year average.

5. Vessels: (Page 5)

- Vancouver vessel lineup for Week 53 2023-24 decreased to 12 vessels (The current one-year average at Vancouver is 20 vessels). Of the 12, 5 were at berth, 3 were anchored at English Bay and 4 were anchored at Vancouver Island.
- Prince Rupert vessel lineup for Week 53 2023-24 remained at 4 vessels (The current one-year average at Prince Rupert is 2 vessels).
- Vessels cleared from Vancouver was 3 and from Prince Rupert was 1 in Week 53 2023-24.

1. Stocks in Store

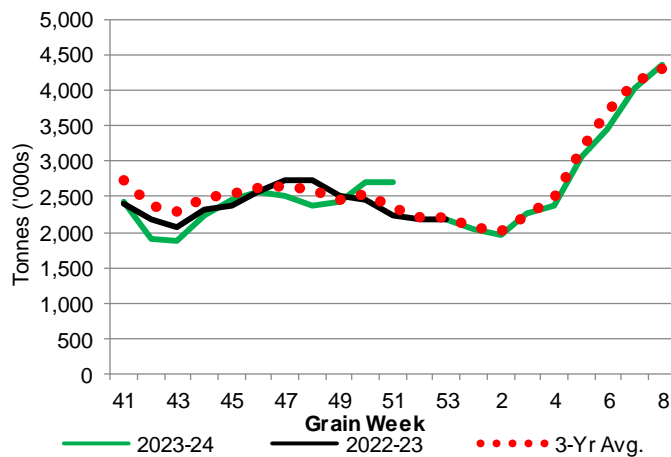
1-A1 Country Stocks ('000 tonnes) – Week 51

	MB	SK	AB	BC	Total
2023-24	511.6	1,502.8	680.0	10.9	2,705.3
2022-23	579.2	1,105.7	536.4	24.9	2,246.2
3-Yr Avg.	490.3	1,251.3	599.1	16.1	2,356.8
Var % - LY	-12%	36%	27%	-56%	20%
Var % 3-Yr Avg.	4%	20%	14%	-32%	15%
Storage Capacity	1,610.0	4,224.4	2,460.4	39.7	8,334.5
Estimated Working Capacity	1,046.5	2,745.9	1,599.2	25.8	5,417.4
23-24 % of Wkg Cap	49%	55%	43%	42%	50%

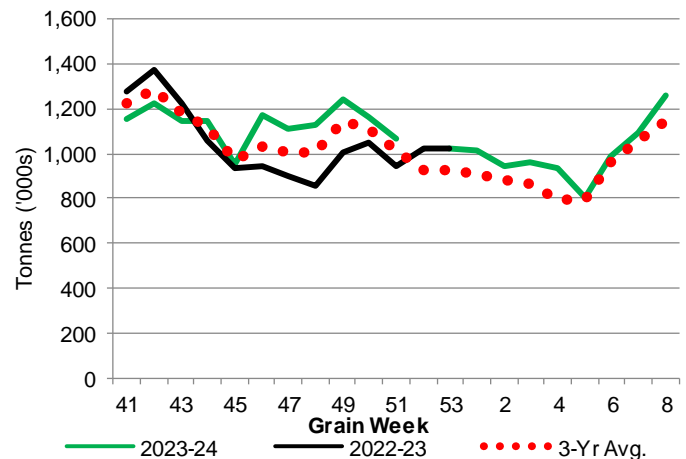
1-B1 Terminal Stocks ('000 tonnes) – Week 51

	VC	PR	West Coast	CH	TB	Total
2023-24	474.4	148.0	622.4	0.7	445.4	1,068.5
2022-23	442.5	121.4	563.9	0.7	377.9	942.5
3-Yr Avg.	504.4	122.7	627.1	0.7	384.9	1,012.7
Var % - LY	7%	22%	10%	0%	18%	13%
Var % 3-Yr Avg.	-6%	21%	-1%	0%	16%	6%
Storage Capacity	1,275.5	209.5	1,485.0	140.0	1,127.5	2,752.5
Estimated Working Capacity	892.9	146.7	1,039.6	98.0	789.2	1,926.8
23-24 % of Wkg Cap	53%	101%	60%	1%	56%	55%

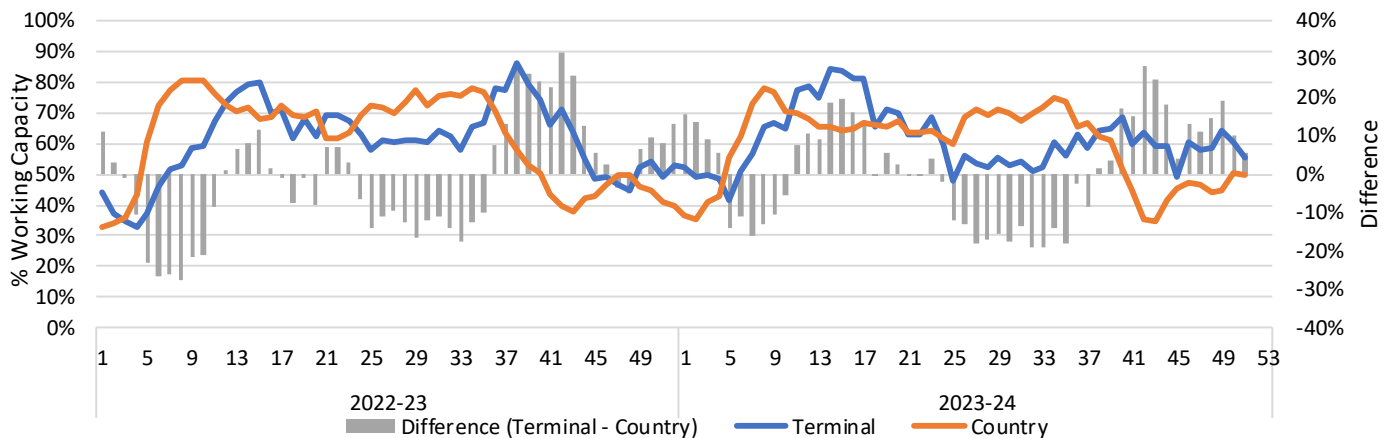
1-A2 Weekly Country Stocks in Store



1-B2 Weekly Terminal Stocks in Store



1-C Weekly Stock Balance

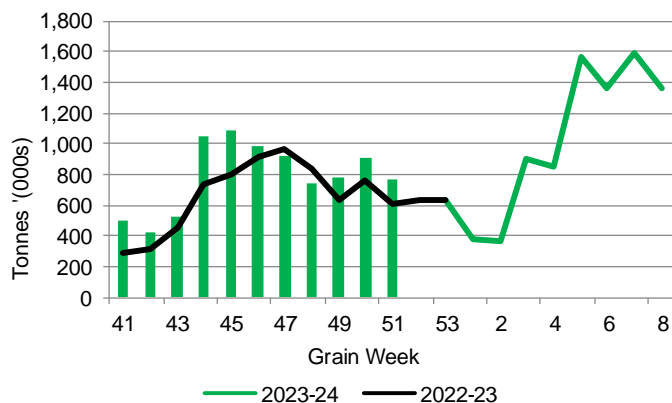


2. Country Deliveries

2-A Country Deliveries ('000 tonnes) – Week 51

	MB	SK	AB	BC	Total
2023-24	148.7	409.3	203.8	4.4	766.2
2022-23	140.4	298.8	164.0	4.9	608.1
4 Wk Avg	133.9	444.2	215.2	2.7	795.9
Var % to Last Year	6%	37%	24%	-10%	26%
Var % To 4 Wk Avg	11%	-8%	-5%	63%	-4%

2-B 2023-24 Weekly Country Deliveries



3. Port Performance

3-A Weekly Unloads by Port (Cars) – This Year for Week 52, 4-Week Moving Average and Variances

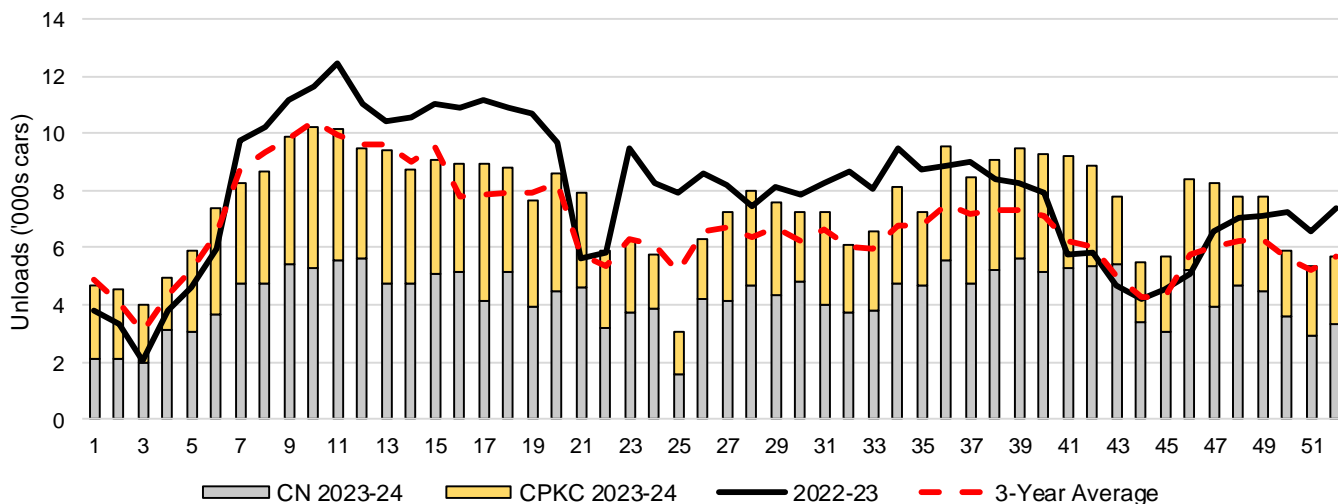
	Vancouver	Prince Rupert	West Coast	Thunder Bay	Churchill	Total
2023-24	3,614	520	4,134	1,535	-	5,669
2022-23	4,541	723	5,264	2,119	-	7,383
4-Wk Avg.	3,828	792	4,621	1,573	-	6,193
Var % to Last Year	-20%	-28%	-21%	-28%	n/a	-23%
Var % to 4-Wk Avg.	-6%	-34%	-11%	-2%	n/a	-8%

3-B Terminal Unloads by Port – This Year-to-Date as at Week 52 and Variances

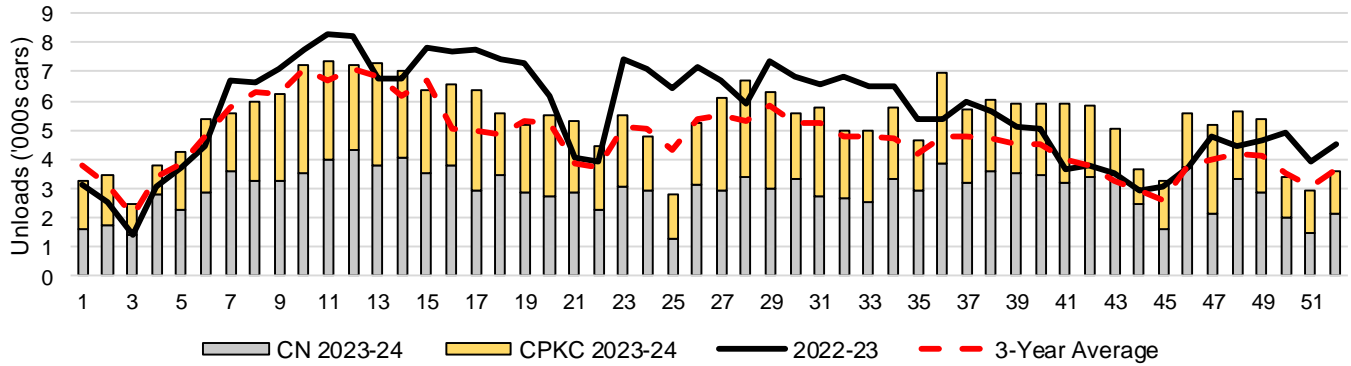
YTD Unloads (cars)	Vancouver	Prince Rupert	West Coast	Thunder Bay	Churchill	Total
2023-24	276,875	36,281	313,156	77,941	-	391,097
2022-23	290,235	47,631	337,866	72,504	-	410,370
3-Yr Avg	244,471	36,481	280,953	69,598	-	350,551
Var % to Last Year	-5%	-24%	-7%	7%	n/a	-5%
Var % to 3-Yr Avg	13%	-1%	11%	12%	n/a	12%

YTD Unloads ('000 tonnes)	Vancouver	Prince Rupert	West Coast	Thunder Bay	Churchill	Total
2023-24	26,661.1	3,505.1	30,166.2	7,545.2	-	37,711.4
2022-23	28,090.8	4,569.8	32,660.6	6,991.1	-	39,651.7
3-Yr Avg.	23,496.3	3,488.4	26,984.7	6,707.6	-	33,692.3
Var % to Last Year	-5%	-23%	-8%	8%	n/a	-5%
Var % to 3-Yr Avg.	13%	0%	12%	12%	n/a	12%

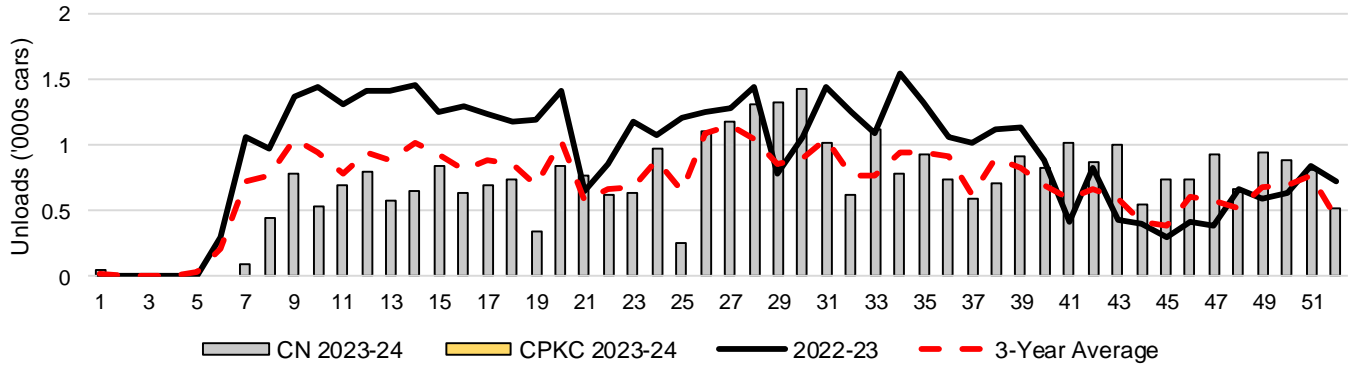
3-C Western Port Terminal Unloads (cars), Total by Carrier, This Year vs. Last Year and the 3-Year Average



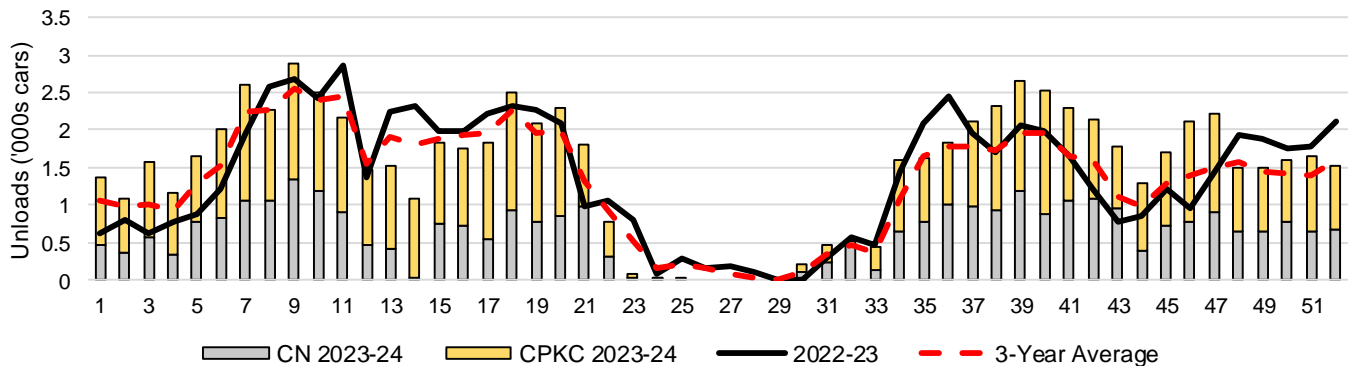
3-D Vancouver Terminal Unloads (cars), Total by Carrier, This Year vs. Last Year and the 3-Year Average



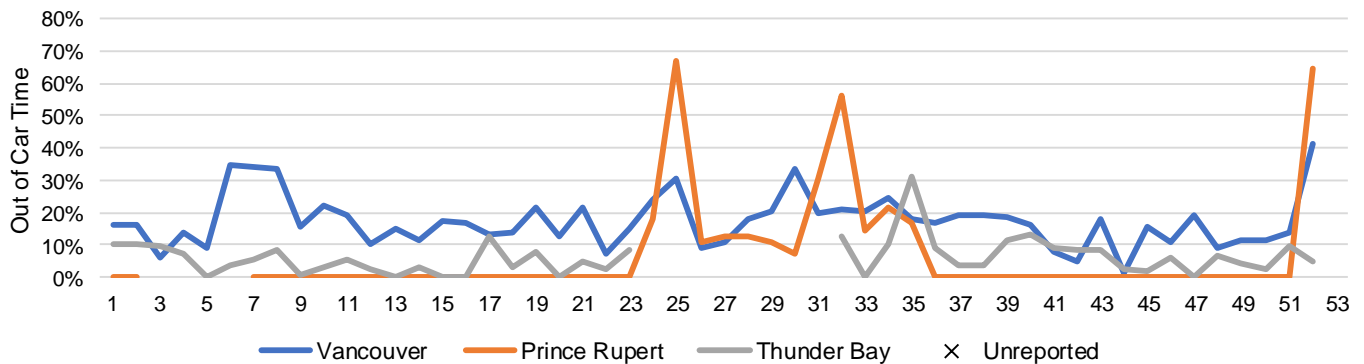
3-E Prince Rupert Terminal Unloads (cars), Total by Carrier, This Year vs. Last Year and the 3-Year Average



3-F Thunder Bay Terminal Unloads (cars), Total by Carrier, This Year vs. Last Year and the 3-Year Average



3-G Weekly Out-of-Car Time (% of hours out-of-cars / total hours working)



Out-of-car time is measured weekly and uses data from terminal elevators on the total number of hours the facilities are open & staffed (including overtime hours) and the corresponding number of hours that terminals have no railcars available to unload. The measure is expressed as a percentage (hours without cars to the total number of hours working).

3-H Monthly Unloads (cars) – This year vs. Last Year and the 3-Year Average to Week 48 2023-24

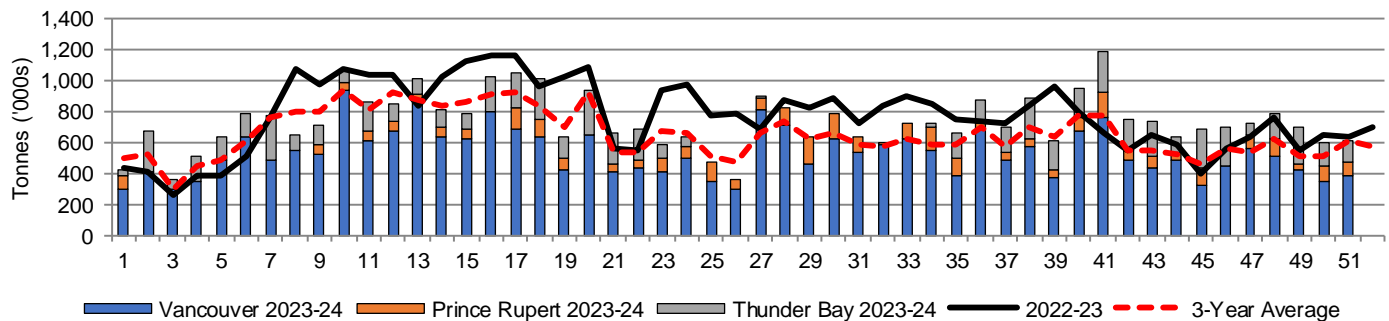
Months	Aug	Sep	Oct	Nov	Dec	Jan	Feb	Mar	Apr	May	Jun	Jul
Weeks	1-5	6-9	10-13	14-18	19-22	23-27	28-31	32-35	36-39	40-44	45-48	49-53
2023-24	24,066	34,250	39,310	44,460	30,025	28,628	30,071	28,076	36,528	40,674	30,236	-
2022-23	17,592	37,081	45,507	54,625	31,875	42,443	31,747	34,970	34,538	28,378	23,280	28,334
3-Yr Avg.	21,619	34,406	39,606	42,112	27,333	30,880	25,934	25,484	29,302	28,644	22,382	21,701
Var % to Last Year	37%	-8%	-14%	-19%	-6%	-33%	-5%	-20%	6%	43%	30%	
Var % to 3-Yr Avg.	11%	0%	-1%	6%	10%	-7%	16%	10%	25%	42%	35%	

4. Shipments

4-A Shipments from Port Terminals ('000 tonnes) – This Year-to-Date as at Week 51 and Variance to Last Year-to-Date

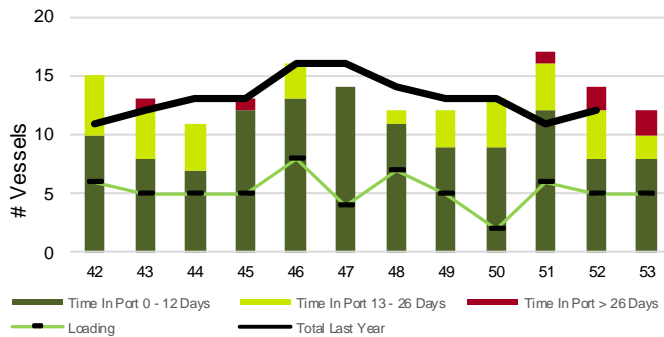
	Vancouver	Prince Rupert	West Coast	Thunder Bay	Churchill	Total
2023-24	27,148.6	3,436.0	30,584.6	6,912.6	-	37,497.2
2022-23	28,239.8	4,462.6	32,702.4	6,563.7	-	39,266.1
3-Yr Avg.	23,553.6	3,387.2	26,940.8	6,345.6	-	33,286.4
Var % to Last Year	-4%	-23%	-6%	5%	n/a	-5%
Var % to 3-Yr Avg.	15%	1%	14%	9%	n/a	13%

4-B Weekly Shipments ('000 tonnes) from Port Terminals – This Year vs Last Year and the 3-Year Average

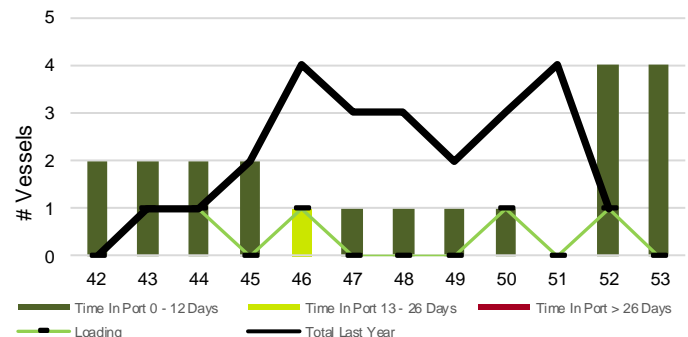


5. Vessels

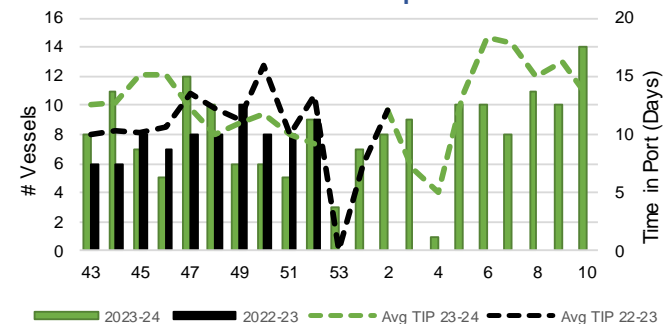
5-A Vessel Lineup at Vancouver as of Week 53 2023-24



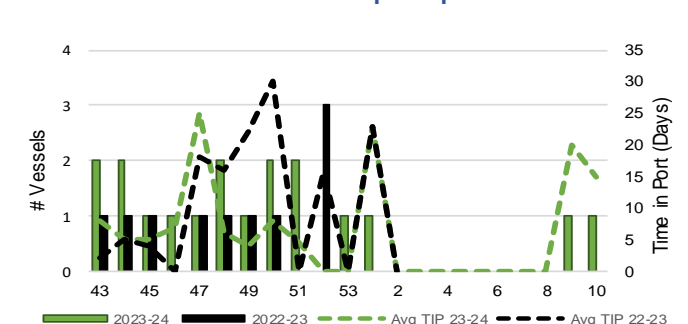
5-C Vessel Lineup at Prince Rupert as of Week 53 2023-24



5-B Vessels Cleared at Vancouver up to Week 53 2023-24



5-D Vessels Cleared at Prince Rupert up to Week 53 2023-24



Note: The 'Time in Port' measure for 6-A and 6-C is calculated as how long each vessel in the lineup has been in port as at Sunday 23:59 of that grain week. The 'Avg Time in Port (TIP)' measure for 6-B and 6-D is the average number of days that all vessels which cleared that week were in port. These measures use vessel data provided by the BC Chamber of Shipping and Pacific Pilotage Authority.