

Grain Monitoring Program

Weekly Performance Update

August 20, 2024

For Grain Week 01 2024-25 CY
August 1, 2024 to August 12, 2024

Summary

| | Week 01 | Week 53 | Var. from Last Year | |
|---|-----------------------|----------------|----------------------------|------|
| 1. Stocks in Store ('000 tonnes) | | | | |
| Country Elevators | ↓ 2,579.2 | 2,868.3 | 27% | |
| % of Working Capacity | 48% | 53% | | |
| Terminal Elevators | ↓ 1,074.2 | 1,220.2 | 6% | |
| % of Working Capacity | 56% | 63% | | |
| 2. Country Deliveries ('000 tonnes) | | | | |
| Country Deliveries | ↑ 742.7 | 356.1 | 100% | |
| 3. Port Performance (Cars) | | | | |
| Vancouver Unloads | ↑ 7,027 | 1,238 | 114% | |
| Prince Rupert Unloads | ↑ 1,101 | 227 | 2521% | |
| Churchill Unloads | — 0 | 0 | n/a | |
| Thunder Bay Unloads | ↑ 1,964 | 618 | 45% | |
| Total Weekly Unloads | ↑ 10,092 | 2,083 | 116% | |
| 4-Week Rolling Average | ↑ 5,807 | 4,760 | | |
| Var. to 4-Week Rolling Average | 74% | -56% | | |
| YTD Unloads | 10,092 | 393,282 | 116% | |
| Weekly Out-of-Car Time | ↓ 11.1% | 17.5% | -16.9% | |
| 4. Terminal Shipments Year-to-Date ('000 tonnes) | | | | |
| Vancouver | ↓ 644.5 | 27,557.5 | 113% | |
| Prince Rupert | ↓ 159.4 | 3,436.0 | 107% | |
| Churchill | — 0.0 | 0.0 | n/a | |
| Thunder Bay | ↓ 113.9 | 7,138.5 | 163% | |
| Total Western Canada | ↓ 917.8 | 38,132.0 | 117% | |
| 5. Vessels as at Aug 18, 2024 | | | | |
| | Week 02 | Week 01 | Var. from Last Year | |
| Vancouver | Vessel Lineup in port | ↓ 13 | 16 | 0% |
| | Vessels Cleared | ↑ 12 | 10 | 50% |
| | Vessels Arrived | ↓ 9 | 14 | -18% |
| Pr. Rupert | Vessel Lineup in port | ↓ 0 | 1 | n/a |
| | Vessels Cleared | ↓ 1 | 3 | n/a |
| | Vessels Arrived | — 0 | 0 | n/a |
| Vessels Inbound Aug 19, 2024 to Aug 25, 2024 (Week 03) | | | | |
| Vancouver | 10 | | | |
| Prince Rupert | 1 | | | |

Note to Readers:

The GMP Weekly Report for Week 53 ends the crop year on July 31st and can reflect a different number of days in Week 53 and Week 01 when comparing years.

- Week 53 2023-24 is a 3-day period with no Week 53 2022-23 to compare it to.
- Week 01 2024-25 is an 11-day period compared against a 6-day period for Week 01 2023-24.

1. Stocks in Store: (Page 2)

- Country stocks decreased to 2.58 MMT in Week 01 utilizing 48% of the system's working capacity. Space in primary elevators is good.
- Total western port terminal stocks decreased to 1.07 MMT in Week 01, utilizing 56% of the working capacity.

2. Country Deliveries: (Page 3)

- Deliveries to primary elevators were 0.74 MMT in Week 01.

3. Port Performance: (Pages 3-5)

- Total western port unloads were 74% higher than the 4-week moving average.
- West Coast unloads were 8,128 cars (Vancouver 7,027 and Prince Rupert 1,101), 86% higher than the 4-week moving average.
- Thunder Bay unloads were 1,964 cars, 36% higher than the 4-week moving average.
- The total average terminal out-of-car time (OCT) decreased to 11.1% from 17.5% the previous week. The OCT for Week 01 was 15.7% at Vancouver, 0.0% at Prince Rupert and 2.4% at Thunder Bay.

4. Shipments: (Page 5)

- Year-to-date Western Canadian shipments from port terminal elevators at Week 01 are 117% higher than the same period last year and 56% higher than the 3-year average.

5. Vessels: (Page 5)

- Vancouver vessel lineup for Week 02 2024-25 decreased to 13 vessels (The current one-year average at Vancouver is 20 vessels). Of the 13, 4 were at berth, 8 were anchored at English Bay, 0 were anchored at Burrard Inlet and 1 was anchored at Vancouver Island.
- Prince Rupert vessel lineup for Week 02 2024-25 decreased to 0 vessels (The current one-year average at Prince Rupert is 2 vessels).
- Vessels cleared from Vancouver was 12 and from Prince Rupert was 1 in Week 02 2024-25.

1. Stocks in Store

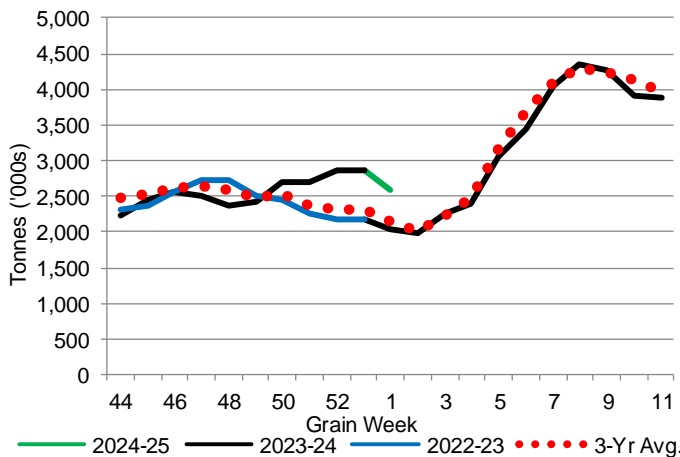
1-A1 Country Stocks ('000 tonnes) – Week 01

| | MB | SK | AB | BC | Total |
|----------------------------|---------|---------|---------|------|---------|
| 2024-25 | 531.7 | 1,302.8 | 727.4 | 17.3 | 2,579.2 |
| 2023-24 | 554.7 | 945.9 | 515.4 | 20.6 | 2,036.6 |
| 3-Yr Avg. | 484.4 | 1,069.8 | 570.9 | 16.0 | 2,141.1 |
| Var % - LY | -4% | 38% | 41% | -16% | 27% |
| Var % 3-Yr Avg. | 10% | 22% | 27% | 8% | 20% |
| Storage Capacity | 1,610.0 | 4,224.4 | 2,460.4 | 39.7 | 8,334.5 |
| Estimated Working Capacity | 1,046.5 | 2,745.9 | 1,599.2 | 25.8 | 5,417.4 |
| 24-25 % of Wkg Cap | 51% | 47% | 45% | 67% | 48% |

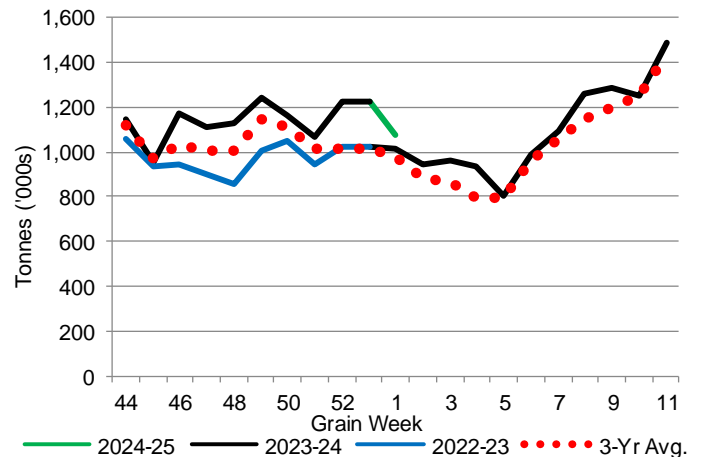
1-B1 Terminal Stocks ('000 tonnes) – Week 01

| | VC | PR | West Coast | CH | TB | Total |
|----------------------------|---------|-------|------------|-------|---------|---------|
| 2024-25 | 600.3 | 48.1 | 648.4 | - | 425.8 | 1,074.2 |
| 2023-24 | 548.9 | 13.7 | 562.6 | 0.7 | 446.2 | 1,009.5 |
| 3-Yr Avg. | 549.5 | 31.1 | 580.6 | 0.5 | 397.2 | 978.3 |
| Var % - LY | 9% | 251% | 15% | -100% | -5% | 6% |
| Var % 3-Yr Avg. | 9% | 55% | 12% | -100% | 7% | 10% |
| Storage Capacity | 1,275.5 | 209.5 | 1,485.0 | 140.0 | 1,127.5 | 2,752.5 |
| Estimated Working Capacity | 892.9 | 146.7 | 1,039.6 | 98.0 | 789.2 | 1,926.8 |
| 24-25 % of Wkg Cap | 67% | 33% | 62% | 0% | 54% | 56% |

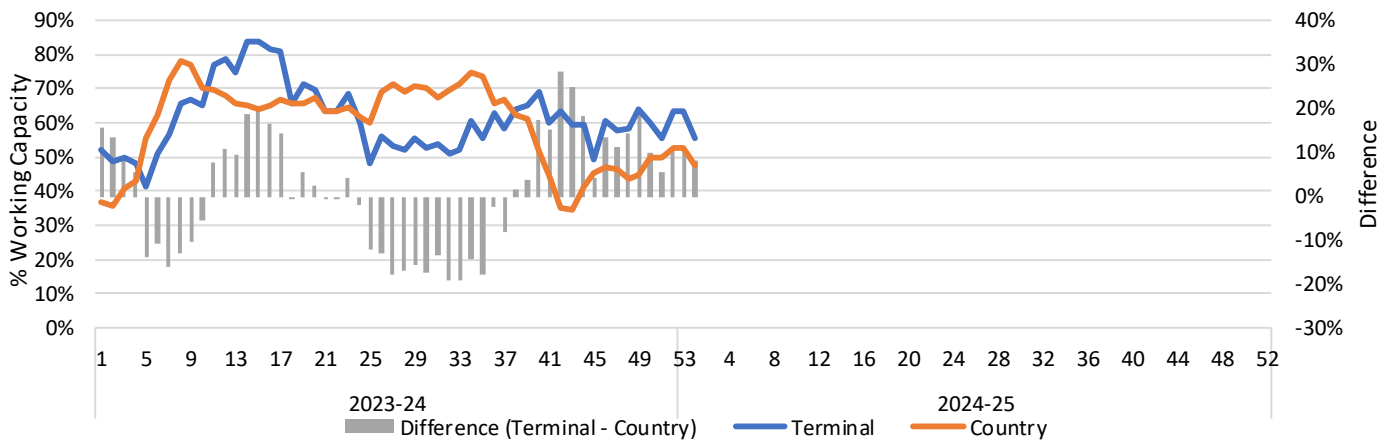
1-A2 Weekly Country Stocks in Store



1-B2 Weekly Terminal Stocks in Store



1-C Weekly Stock Balance

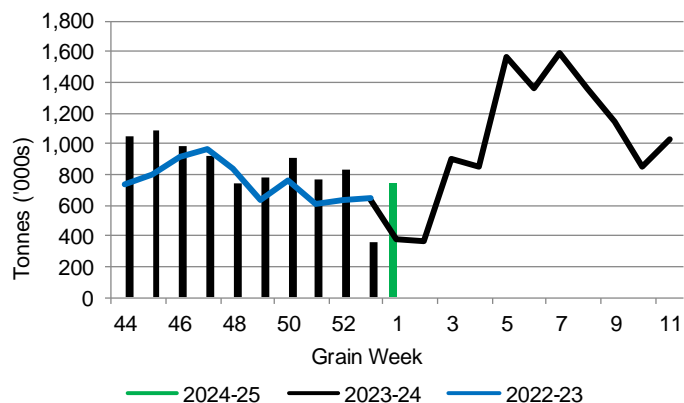


2. Country Deliveries

2-A Country Deliveries ('000 tonnes) – Week 01

| | MB | SK | AB | BC | Total |
|--------------------|-------|-------|-------|------|-------|
| 2024-25 | 121.7 | 371.7 | 247.1 | 2.2 | 742.7 |
| 2023-24 | 105.0 | 160.8 | 103.5 | 2.4 | 371.7 |
| 4 Wk Avg | 132.2 | 353.2 | 184.8 | 3.8 | 674.0 |
| Var % to Last Year | 16% | 131% | 139% | -8% | 100% |
| Var % To 4 Wk Avg | -8% | 5% | 34% | -42% | 10% |

2-B 2024-25 Weekly Country Deliveries



3. Port Performance

3-A Weekly Unloads by Port (Cars) – This Year for Week 01, 4-Week Moving Average and Variances

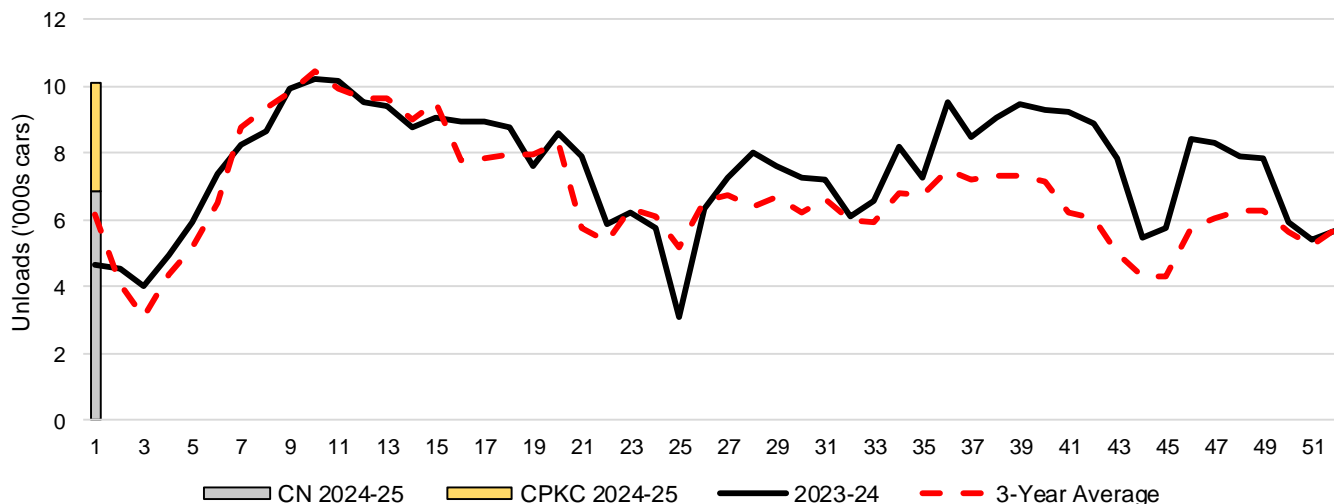
| | Vancouver | Prince Rupert | West Coast | Thunder Bay | Churchill | Total |
|--------------------|-----------|---------------|------------|-------------|-----------|--------|
| 2024-25 | 7,027 | 1,101 | 8,128 | 1,964 | - | 10,092 |
| 2023-24 | 3,276 | 42 | 3,318 | 1,358 | n/a | 4,676 |
| 4-Wk Avg. | 3,696 | 666 | 4,363 | 1,445 | - | 5,807 |
| Var % to Last Year | 114% | 2521% | 145% | 45% | n/a | 116% |
| Var % to 4-Wk Avg. | 90% | 65% | 86% | 36% | n/a | 74% |

3-B Terminal Unloads by Port – This Year-to-Date as at Week 01 and Variances

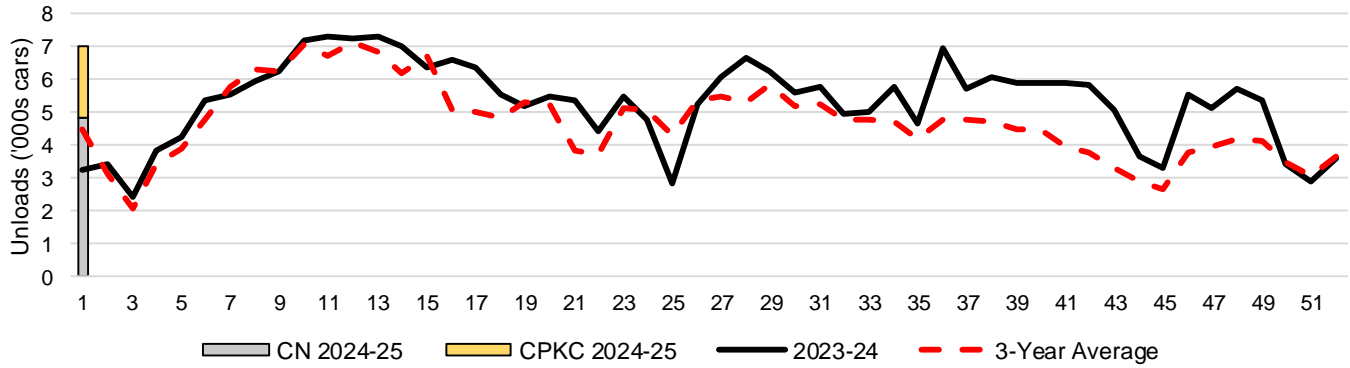
| YTD Unloads (cars) | Vancouver | Prince Rupert | West Coast | Thunder Bay | Churchill | Total |
|--------------------|-----------|---------------|------------|-------------|-----------|--------|
| 2024-25 | 7,027 | 1,101 | 8,128 | 1,964 | - | 10,092 |
| 2023-24 | 3,276 | 42 | 3,318 | 1,358 | - | 4,676 |
| 3-Yr Avg | 4,481 | 381 | 4,862 | 1,318 | - | 6,180 |
| Var % to Last Year | 114% | 2521% | 145% | 45% | n/a | 116% |
| Var % to 3-Yr Avg | 57% | 189% | 67% | 49% | n/a | 63% |

| YTD Unloads ('000 tonnes) | Vancouver | Prince Rupert | West Coast | Thunder Bay | Churchill | Total |
|---------------------------|-----------|---------------|------------|-------------|-----------|-------|
| 2024-25 | 660.1 | 100.7 | 760.8 | 191.1 | - | 951.9 |
| 2023-24 | 308.7 | 3.9 | 312.6 | 133.4 | - | 446.0 |
| 3-Yr Avg. | 425.5 | 34.9 | 460.4 | 129.1 | - | 589.4 |
| Var % to Last Year | 114% | 2482% | 143% | 43% | n/a | 113% |
| Var % to 3-Yr Avg. | 55% | 189% | 65% | 48% | n/a | 61% |

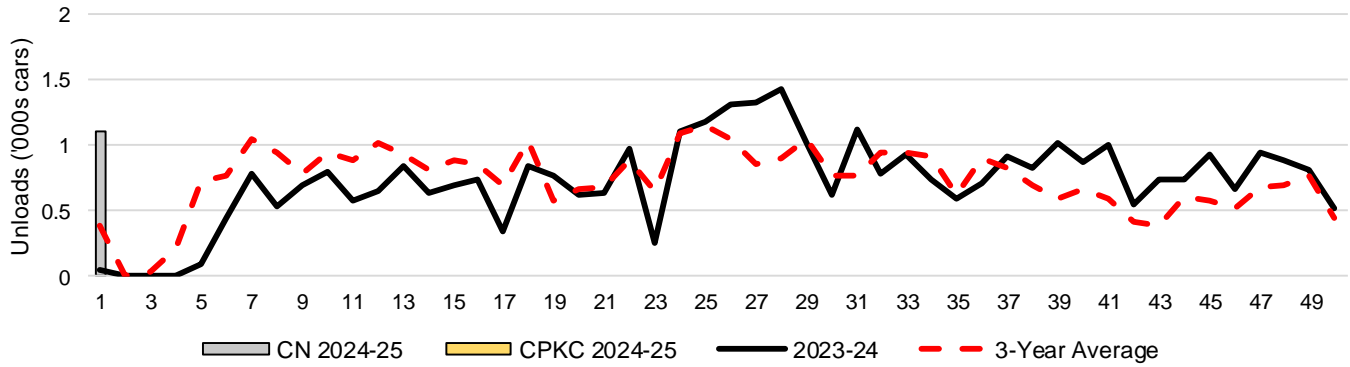
3-C Western Port Terminal Unloads (cars), Total by Carrier, This Year vs. Last Year and the 3-Year Average



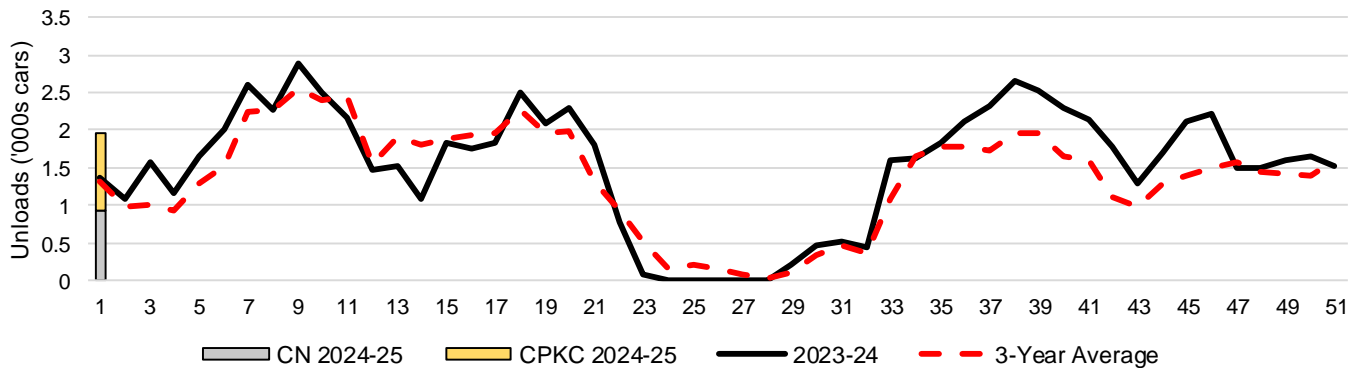
3-D Vancouver Terminal Unloads (cars), Total by Carrier, This Year vs. Last Year and the 3-Year Average



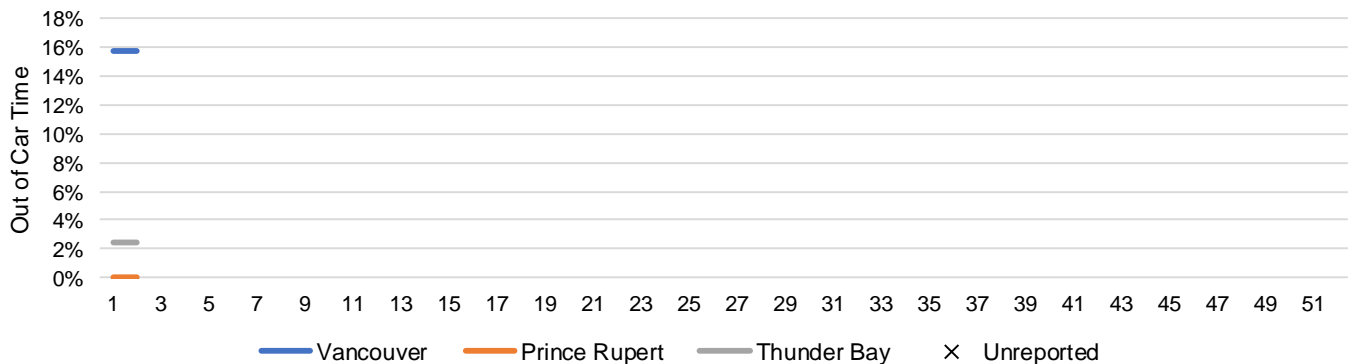
3-E Prince Rupert Terminal Unloads (cars), Total by Carrier, This Year vs. Last Year and the 3-Year Average



3-F Thunder Bay Terminal Unloads (cars), Total by Carrier, This Year vs. Last Year and the 3-Year Average



3-G Weekly Out-of-Car Time (% of hours out-of-cars / total hours working)



Out-of-car time is measured weekly and uses data from terminal elevators on the total number of hours the facilities are open & staffed (including overtime hours) and the corresponding number of hours that terminals have no railcars available to unload. The measure is expressed as a percentage (hours without cars to the total number of hours working).

3-H Monthly Unloads (cars) – This year vs. Last Year and the 3-Year Average to Week 53 2023-24

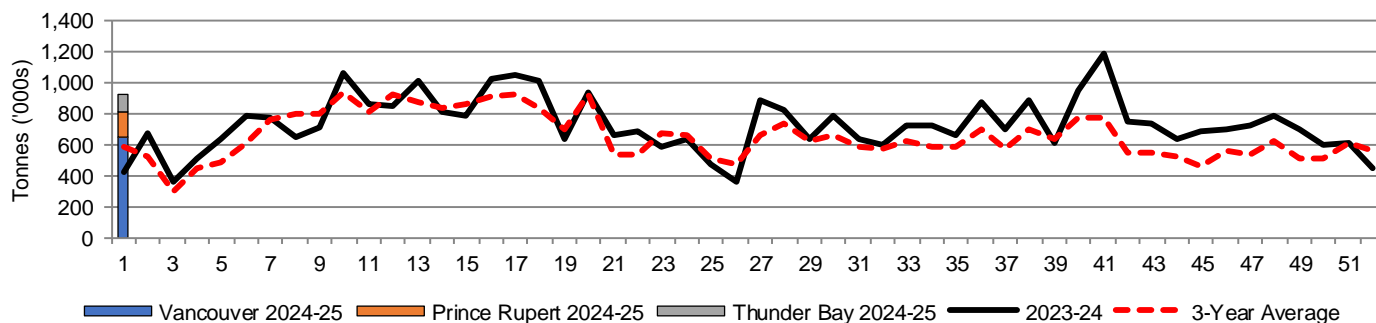
| Months | Aug | Sep | Oct | Nov | Dec | Jan | Feb | Mar | Apr | May | Jun | Jul |
|--------------------|--------|--------|--------|--------|--------|--------|--------|--------|--------|--------|--------|--------|
| Weeks | 1-5 | 6-9 | 10-13 | 14-18 | 19-22 | 23-27 | 28-31 | 32-35 | 36-39 | 40-44 | 45-48 | 49-53 |
| 2023-24 | 24,066 | 34,250 | 39,310 | 44,460 | 30,025 | 28,628 | 30,071 | 28,076 | 36,528 | 40,674 | 30,338 | 26,856 |
| 2022-23 | 17,592 | 37,081 | 45,507 | 54,625 | 31,875 | 42,443 | 31,747 | 34,970 | 34,538 | 28,378 | 23,280 | 28,334 |
| 3-Yr Avg. | 21,619 | 34,406 | 39,606 | 42,112 | 27,333 | 30,880 | 25,934 | 25,484 | 29,302 | 28,644 | 22,416 | 23,542 |
| Var % to Last Year | 37% | -8% | -14% | -19% | -6% | -33% | -5% | -20% | 6% | 43% | 30% | -5% |
| Var % to 3-Yr Avg. | 11% | 0% | -1% | 6% | 10% | -7% | 16% | 10% | 25% | 42% | 35% | 14% |

4. Shipments

4-A Shipments from Port Terminals ('000 tonnes) – This Year-to-Date as of Week 01 and Variance to Last Year-to-Date

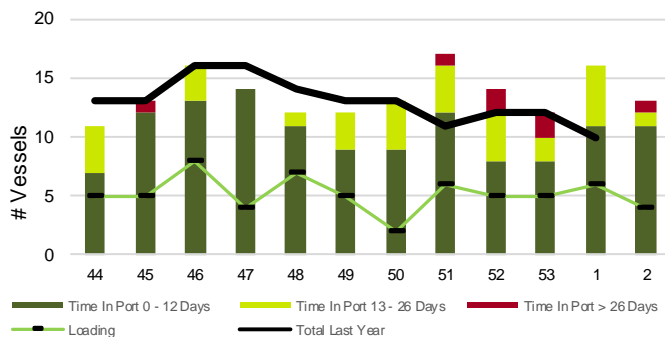
| | Vancouver | Prince Rupert | West Coast | Thunder Bay | Churchill | Total |
|--------------------|-----------|---------------|------------|-------------|-----------|-------|
| 2024-25 | 644.5 | 159.4 | 803.9 | 113.9 | - | 917.8 |
| 2023-24 | 302.0 | 77.0 | 379.0 | 43.3 | - | 422.3 |
| 3-Yr Avg. | 410.9 | 95.9 | 506.8 | 83.1 | - | 589.9 |
| Var % to Last Year | 113% | 107% | 112% | 163% | n/a | 117% |
| Var % to 3-Yr Avg. | 57% | 66% | 59% | 37% | n/a | 56% |

4-B Weekly Shipments ('000 tonnes) from Port Terminals – This Year vs Last Year and the 3-Year Average

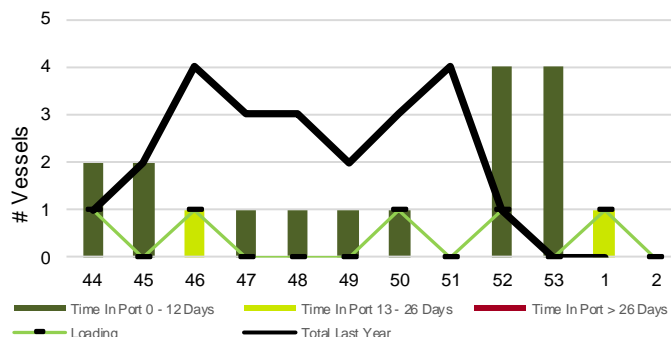


5. Vessels

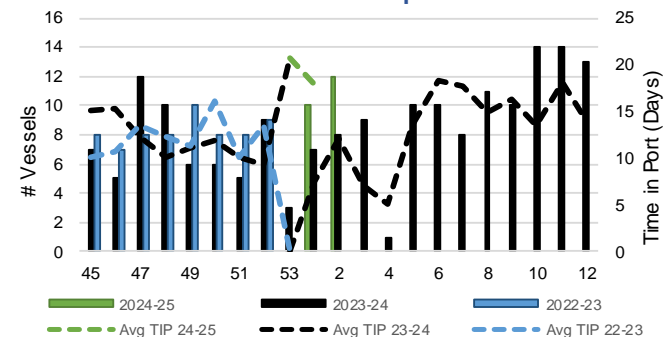
5-A Vessel Lineup at Vancouver as of Week 02 2024-25



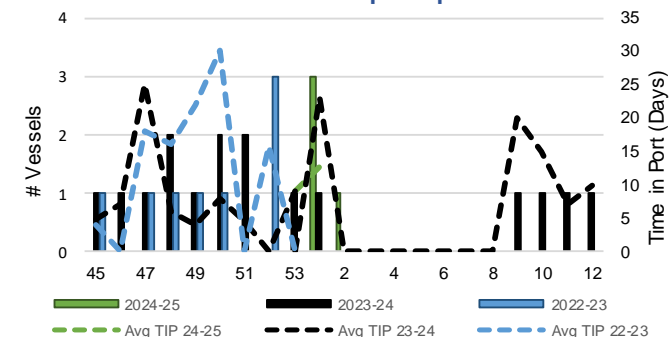
5-C Vessel Lineup at Prince Rupert as of Week 02 2024-25



5-B Vessels Cleared at Vancouver up to Week 02 2024-25



5-D Vessels Cleared at Prince Rupert up to Week 02 2024-25



Note: The 'Time in Port' measure for 6-A and 6-C is calculated as how long each vessel in the lineup has been in port as at Sunday 23:59 of that grain week. The 'Avg Time in Port (TIP)' measure for 6-B and 6-D is the average number of days that all vessels which cleared that week were in port. These measures use vessel data provided by the BC Chamber of Shipping and Pacific Pilotage Authority.