

# Grain Monitoring Program

## Weekly Performance Update

September 03, 2024

For Grain Week 03 2024-25 CY  
August 19, 2024 to August 25, 2024

### Summary

	Week 03	Week 02	Var. from Last Year	
<b>1. Stocks in Store ('000 tonnes)</b>				
Country Elevators	↑ 2,890.8	2,655.2	28%	
% of Working Capacity	53%	49%		
Terminal Elevators	↓ 920.4	1,011.6	-4%	
% of Working Capacity	48%	53%		
<b>2. Country Deliveries ('000 tonnes)</b>				
Country Deliveries	↑ 882.7	807.2	-3%	
<b>3. Port Performance (Cars)</b>				
Vancouver Unloads	↓ 4,143	5,637	70%	
Prince Rupert Unloads	↓ 0	300	n/a	
Churchill Unloads	— 0	0	n/a	
Thunder Bay Unloads	↓ 944	1,128	-40%	
Total Weekly Unloads	↓ 5,087	7,065	27%	
4-Week Rolling Average	↓ 6,082	6,227		
Var. to 4-Week Rolling Average	-16%	13%		
YTD Unloads	22,244	17,157	69%	
Weekly Out-of-Car Time	↓ 15.3%	20.0%	128.2%	
<b>4. Terminal Shipments Year-to-Date ('000 tonnes)</b>				
Vancouver	↑ 1,412.4	1,191.5	40%	
Prince Rupert	— 222.7	222.7	189%	
Churchill	— 0.0	0.0	n/a	
Thunder Bay	↑ 511.7	374.6	37%	
Total Western Canada	↑ 2,146.8	1,788.8	47%	
<b>5. Vessels as at Sep 1, 2024</b>				
	<b>Week 04</b>	<b>Week 03</b>	<b>Var. from Last Year</b>	
Vancouver	Vessel Lineup in port	↑ 22	16	-4%
	Vessels Cleared	↑ 9	4	800%
	Vessels Arrived	↑ 15	6	67%
Pr. Rupert	Vessel Lineup in port	↑ 2	0	n/a
	Vessels Cleared	— 0	0	n/a
	Vessels Arrived	↑ 2	0	n/a
<b>Vessels Inbound Sep 02, 2024 to Sep 08, 2024 (Week 05)</b>				
Vancouver	6			
Prince Rupert	0			

### Note to Readers:

Week 03 performance was affected by several disruptions that are reflected within this week's report.

- Railways started preparing their networks for the work stoppage that began on August 22, near the end of Week 03.
- On August 14, a rail bridge in Fort Frances, ON, which provides access to the Port of Thunder Bay for CN collapsed. Unloads into the Port of Thunder Bay are expected to be impacted for the foreseeable future.
- Prince Rupert Grain was closed between August 18-29 for regularly scheduled maintenance.

### 1. Stocks in Store: (Page 2)

- Country stocks increased to 2.89 MMT in Week 03 utilizing 53% of the system's working capacity. Space in primary elevators is good.
- Total western port terminal stocks decreased to 0.92 MMT in Week 03, utilizing 48% of the working capacity.

### 2. Country Deliveries: (Page 3)

- Deliveries to primary elevators were 0.88 MMT in Week 03.

### 3. Port Performance: (Pages 3-5)

- Total western port unloads were 16% lower than the 4-week moving average and 27% higher than Week 03 last year.
- West Coast unloads were 4,143 cars (Vancouver 4,143 and Prince Rupert 0), 16% lower than the 4-week moving average and 70% higher than Week 03 last year.
- Thunder Bay unloads were 944 cars, 19% lower than the 4-week moving average and 40% lower than Week 03 last year.
- The total average terminal out-of-car time (OCT) decreased to 15.3% from 20.0% the previous week. The OCT for Week 03 was 15.9% at Vancouver, and 12.7% at Thunder Bay.

### 4. Shipments: (Page 5)

- Year-to-date Western Canadian shipments from port terminal elevators at Week 03 are 47% higher than the same period last year and 37% higher than the 3-year average.

### 5. Vessels: (Page 5)

- Vancouver vessel lineup for Week 04 2024-25 increased to 22 vessels (The current one-year average at Vancouver is 20 vessels). Of the 22, 9 were at berth, 6 were anchored at English Bay, 2 were anchored at Burrard Inlet and 5 were anchored at Vancouver Island.
- Prince Rupert vessel lineup for Week 04 2024-25 increased to 2 vessels (The current one-year average at Prince Rupert is 2 vessels).
- Vessels cleared from Vancouver was 9 and from Prince Rupert was 0 in Week 04 2024-25.

# 1. Stocks in Store

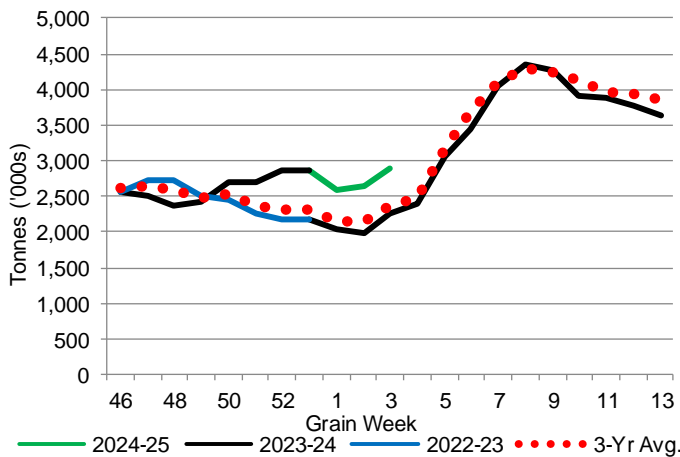
1-A1 Country Stocks ('000 tonnes) – Week 03

	MB	SK	AB	BC	Total
2024-25	584.0	1,420.8	869.7	16.3	2,890.8
2023-24	533.8	1,080.1	630.3	19.6	2,263.8
3-Yr Avg.	483.9	1,170.0	702.8	15.1	2,371.8
Var % - LY	9%	32%	38%	-17%	28%
Var % 3-Yr Avg.	21%	21%	24%	8%	22%
Storage Capacity	1,610.0	4,224.4	2,460.4	39.7	8,334.5
Estimated Working Capacity	1,046.5	2,745.9	1,599.2	25.8	5,417.4
24-25 % of Wkg Cap	56%	52%	54%	63%	53%

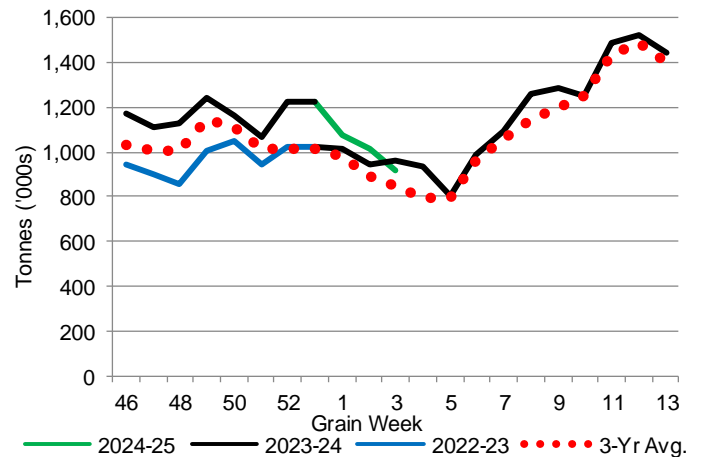
1-B1 Terminal Stocks ('000 tonnes) – Week 03

	VC	PR	West Coast	CH	TB	Total
2024-25	572.8	46.0	618.8	0.7	300.9	920.4
2023-24	515.1	13.7	528.8	0.7	428.0	957.5
3-Yr Avg.	500.3	24.8	525.1	0.5	324.4	849.9
Var % - LY	11%	236%	17%	0%	-30%	-4%
Var % 3-Yr Avg.	14%	85%	18%	40%	-7%	8%
Storage Capacity	1,275.5	209.5	1,485.0	140.0	1,127.5	2,752.5
Estimated Working Capacity	892.9	146.7	1,039.6	98.0	789.2	1,926.8
24-25 % of Wkg Cap	64%	31%	60%	1%	38%	48%

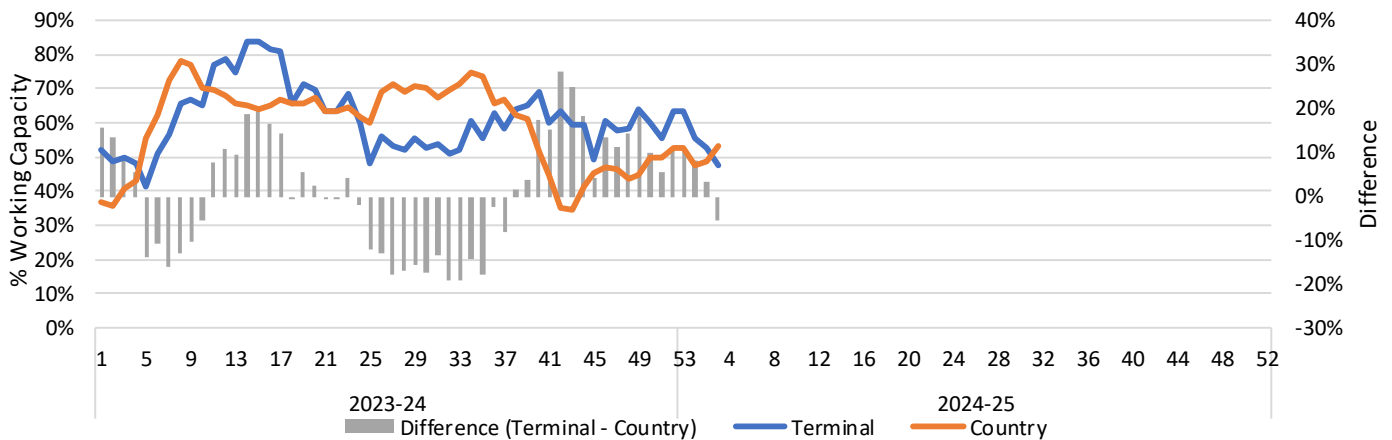
1-A2 Weekly Country Stocks in Store



1-B2 Weekly Terminal Stocks in Store



1-C Weekly Stock Balance

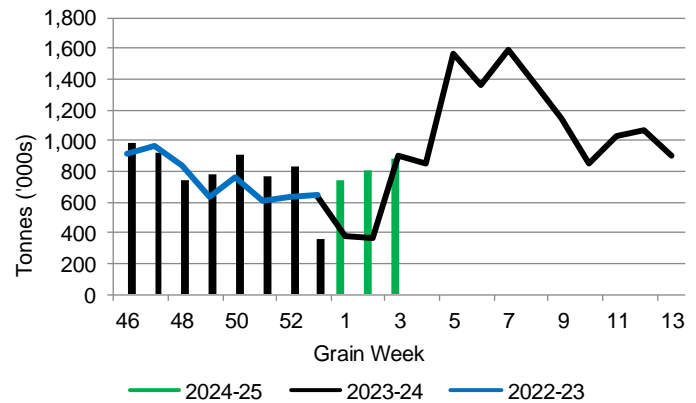


## 2. Country Deliveries

2-A Country Deliveries ('000 tonnes) – Week 03

	MB	SK	AB	BC	Total
2024-25	158.3	430.7	287.2	6.5	882.7
2023-24	203.7	437.8	260.9	4.2	906.6
4 Wk Avg	123.5	340.4	228.8	4.5	697.2
Var % to Last Year	-22%	-2%	10%	55%	-3%
Var % To 4 Wk Avg	28%	27%	26%	44%	27%

2-B 2024-25 Weekly Country Deliveries



## 3. Port Performance

3-A Weekly Unloads by Port (Cars) – This Year for Week 03, 4-Week Moving Average and Variances

	Vancouver	Prince Rupert	West Coast	Thunder Bay	Churchill	Total
2024-25	4,143	-	4,143	944	-	5,087
2023-24	2,430	n/a	2,430	1,567	n/a	3,997
4-Wk Avg.	4,511	407	4,918	1,164	-	6,082
Var % to Last Year	70%	n/a	70%	-40%	n/a	27%
Var % to 4-Wk Avg.	-8%	-100%	-16%	-19%	n/a	-16%

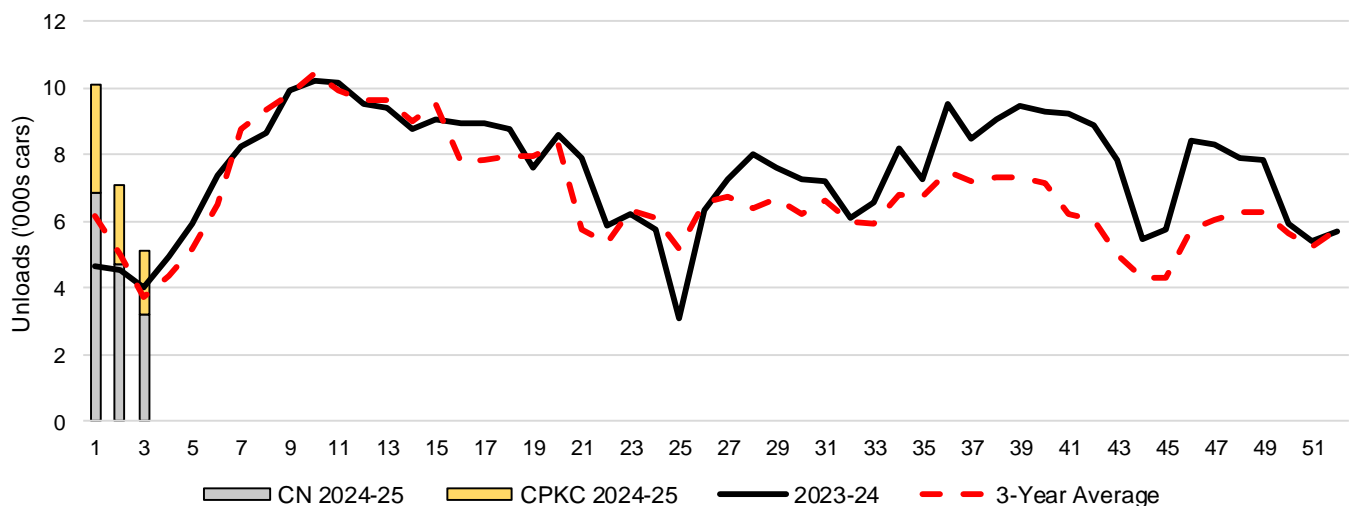
3-B Terminal Unloads by Port – This Year-to-Date as at Week 03 and Variances

YTD Unloads (cars)	Vancouver	Prince Rupert	West Coast	Thunder Bay	Churchill	Total
2024-25	16,807	1,401	18,208	4,036	-	22,244
2023-24	9,152	42	9,194	4,001	-	13,195
3-Yr Avg	11,014	481	11,495	3,369	-	14,863
Var % to Last Year	84%	3236%	98%	1%	n/a	69%
Var % to 3-Yr Avg	53%	191%	58%	20%	n/a	50%

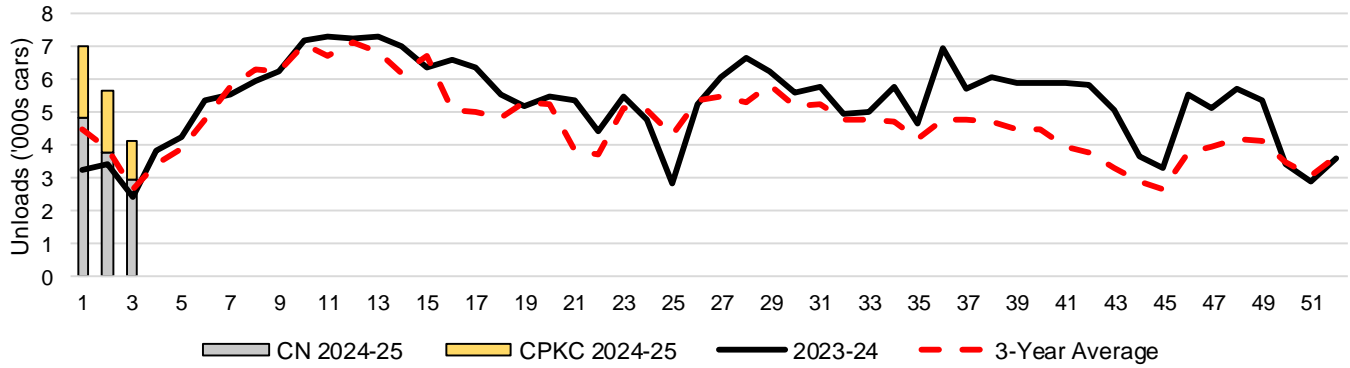
  

YTD Unloads ('000 tonnes)	Vancouver	Prince Rupert	West Coast	Thunder Bay	Churchill	Total
2024-25	1,567.5	129.7	1,697.2	388.0	-	2,085.2
2023-24	862.4	3.9	866.3	383.8	-	1,250.1
3-Yr Avg.	1,040.3	44.5	1,084.9	325.7	-	1,410.6
Var % to Last Year	82%	3226%	96%	1%	n/a	67%
Var % to 3-Yr Avg.	51%	191%	56%	19%	n/a	48%

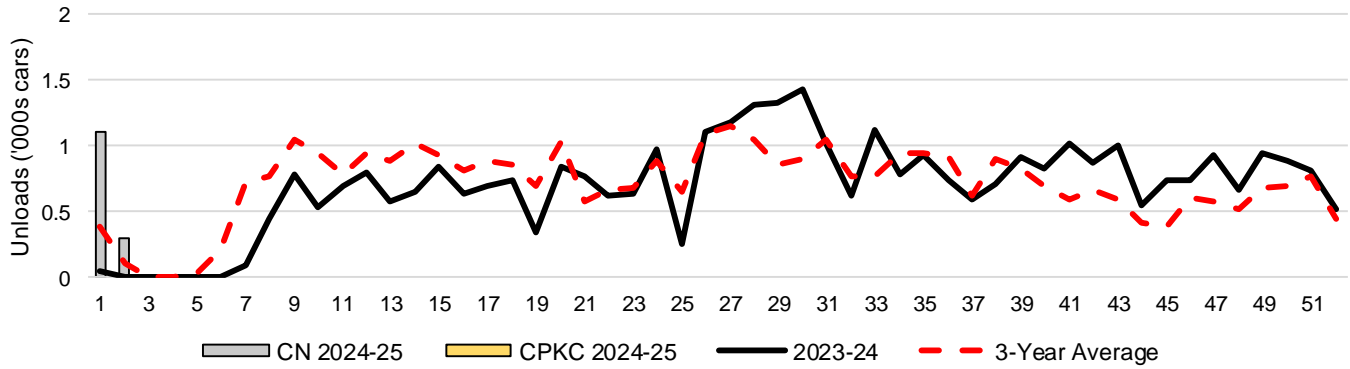
3-C Western Port Terminal Unloads (cars), Total by Carrier, This Year vs. Last Year and the 3-Year Average



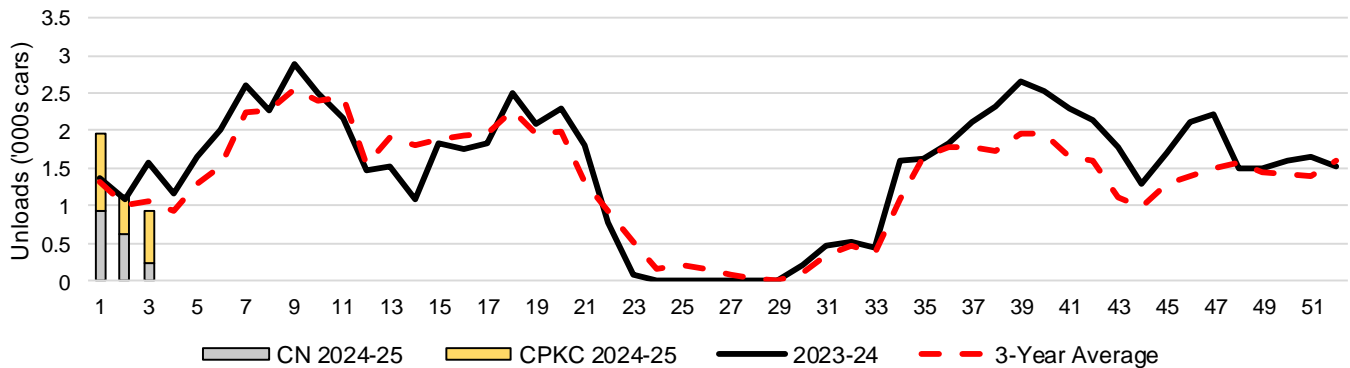
### 3-D Vancouver Terminal Unloads (cars), Total by Carrier, This Year vs. Last Year and the 3-Year Average



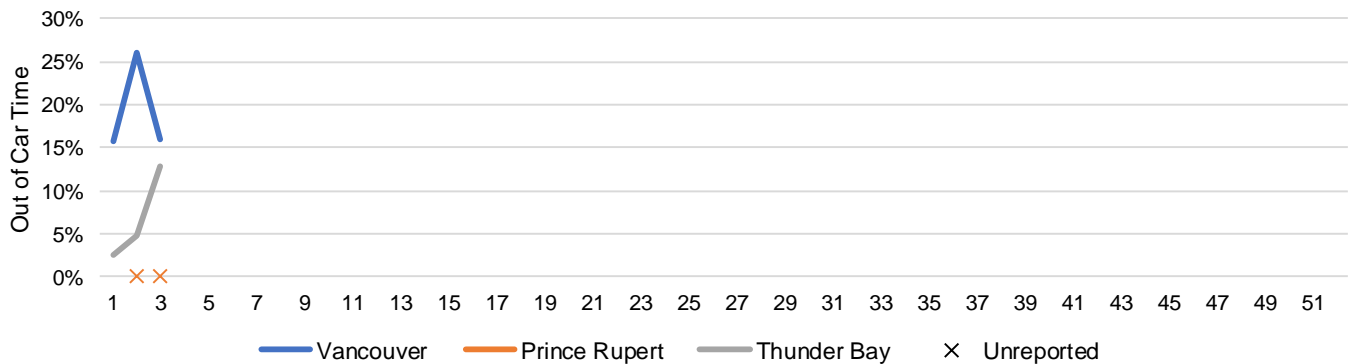
### 3-E Prince Rupert Terminal Unloads (cars), Total by Carrier, This Year vs. Last Year and the 3-Year Average



### 3-F Thunder Bay Terminal Unloads (cars), Total by Carrier, This Year vs. Last Year and the 3-Year Average



### 3-G Weekly Out-of-Car Time (% of hours out-of-cars / total hours working)



Out-of-car time is measured weekly and uses data from terminal elevators on the total number of hours the facilities are open & staffed (including overtime hours) and the corresponding number of hours that terminals have no railcars available to unload. The measure is expressed as a percentage (hours without cars to the total number of hours working).

### 3-H Monthly Unloads (cars) – This year vs. Last Year and the 3-Year Average to Week 53 2023-24

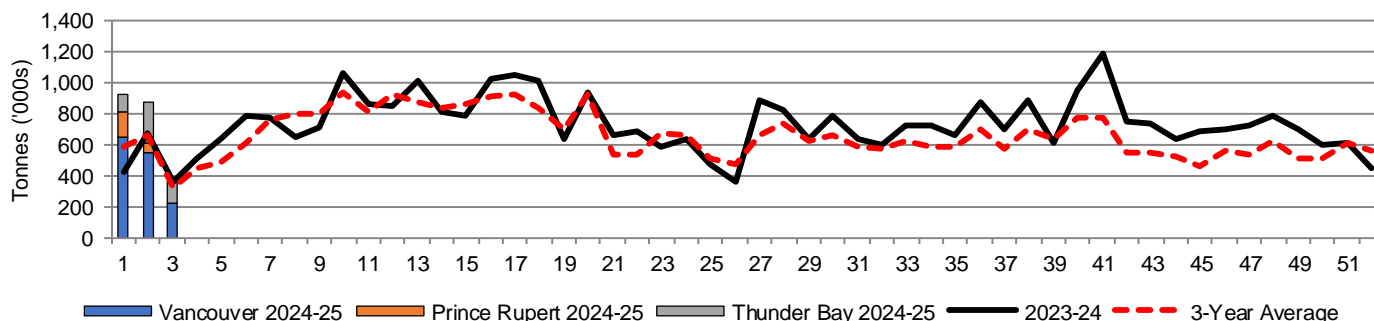
Months	Aug	Sep	Oct	Nov	Dec	Jan	Feb	Mar	Apr	May	Jun	Jul
Weeks	1-5	6-9	10-13	14-18	19-22	23-27	28-31	32-35	36-39	40-44	45-48	49-53
2023-24	24,066	34,250	39,310	44,460	30,025	28,628	30,071	28,076	36,528	40,674	30,338	26,856
2022-23	17,592	37,081	45,507	54,625	31,875	42,443	31,747	34,970	34,538	28,378	23,280	28,334
3-Yr Avg.	21,619	34,406	39,606	42,112	27,333	30,880	25,934	25,484	29,302	28,644	22,416	23,542
Var % to Last Year	37%	-8%	-14%	-19%	-6%	-33%	-5%	-20%	6%	43%	30%	-5%
Var % to 3-Yr Avg.	11%	0%	-1%	6%	10%	-7%	16%	10%	25%	42%	35%	14%

## 4. Shipments

### 4-A Shipments from Port Terminals ('000 tonnes) – This Year-to-Date as at Week 03 and Variance to Last Year-to-Date

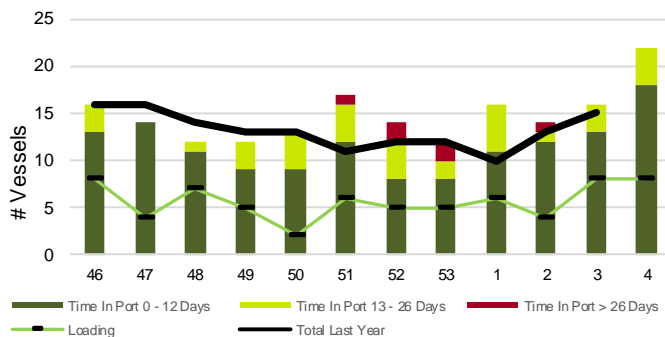
	Vancouver	Prince Rupert	West Coast	Thunder Bay	Churchill	Total
2024-25	1,412.4	222.7	1,635.1	511.7	-	2,146.8
2023-24	1,006.9	77.0	1,083.9	372.6	-	1,456.5
3-Yr Avg.	1,053.9	117.0	1,170.9	399.3	-	1,570.2
Var % to Last Year	40%	189%	51%	37%	n/a	47%
Var % to 3-Yr Avg.	34%	90%	40%	28%	n/a	37%

### 4-B Weekly Shipments ('000 tonnes) from Port Terminals – This Year vs Last Year and the 3-Year Average

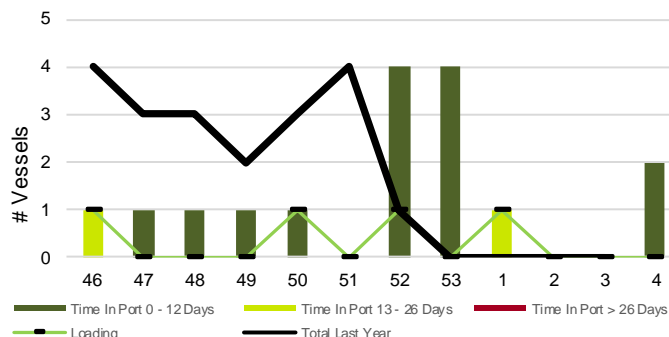


## 5. Vessels

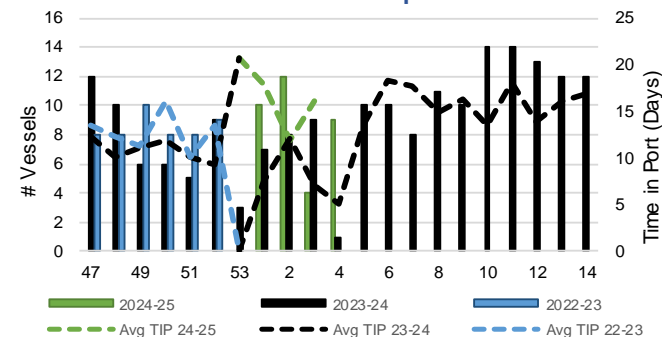
### 5-A Vessel Lineup at Vancouver as of Week 04 2024-25



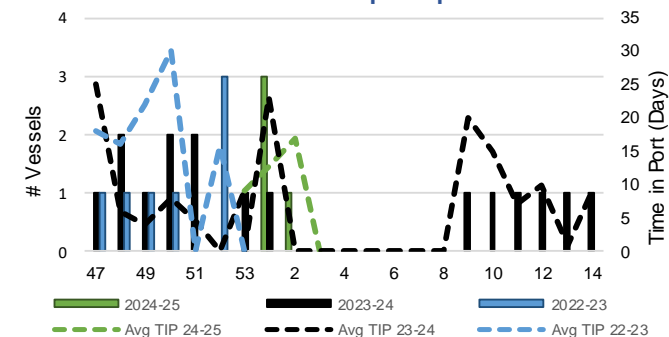
### 5-C Vessel Lineup at Prince Rupert as of Week 04 2024-25



### 5-B Vessels Cleared at Vancouver up to Week 04 2024-25



### 5-D Vessels Cleared at Prince Rupert up to Week 04 2024-25



Note: The 'Time in Port' measure for 6-A and 6-C is calculated as how long each vessel in the lineup has been in port as at Sunday 23:59 of that grain week. The 'Avg Time in Port (TIP)' measure for 6-B and 6-D is the average number of days that all vessels which cleared that week were in port. These measures use vessel data provided by the BC Chamber of Shipping and Pacific Pilotage Authority.