

# Grain Monitoring Program

## Weekly Performance Update

November 12, 2024

For Grain Week 13 2024-25 CY  
October 28, 2024 to November 03, 2024

### Summary

	Week 13	Week 12	Var. from Last Year
--	---------	---------	---------------------

#### 1. Stocks in Store ('000 tonnes)

Country Elevators	↑ 3,870.7	3,827.3	6%
% of Working Capacity	73%	72%	
Terminal Elevators	↑ 1,553.4	1,485.7	8%
% of Working Capacity	81%	77%	

#### 2. Country Deliveries ('000 tonnes)

Country Deliveries	↓ 1,243.3	1,261.4	37%
--------------------	-----------	---------	-----

#### 3. Port Performance (Cars)

Vancouver Unloads	↑ 7,583	7,158	4%
Prince Rupert Unloads	↑ 1,196	962	107%
Churchill Unloads	— 0	0	n/a
Thunder Bay Unloads	↑ 2,343	2,239	55%
Total Weekly Unloads	↑ 11,122	10,359	18%
4-Week Rolling Average	↓ 11,069	11,074	13%
Var. to 4-Week Rolling Average	0%	-6%	
YTD Unloads	120,919	109,797	24%
Weekly Out-of-Car Time	↑ 9.3%	7.0%	-12.3%

#### 4. Terminal Shipments Year-to-Date ('000 tonnes)

Vancouver	↑ 7,696.0	6,997.0	8%
Prince Rupert	↑ 1,009.7	921.4	188%
Churchill	— 0.0	0.0	n/a
Thunder Bay	↑ 2,212.1	2,040.9	22%
Total Western Canada	↑ 10,917.8	9,959.3	18%

#### 5. Vessels as at Nov 10, 2024

	Week 14	Week 13	Var. from Last Year	
Vancouver	Vessel Lineup in port	↓ 24	34	4%
	Vessels Cleared	↑ 16	12	33%
	Vessels Arrived	↓ 6	12	-50%
Pr. Rupert	Vessel Lineup in port	↑ 4	3	300%
	Vessels Cleared	↓ 2	3	100%
	Vessels Arrived	↑ 3	1	200%

#### Vessels Inbound Nov 11, 2024 to Nov 17, 2024 (Week 15)

Vancouver	17
Prince Rupert	1

#### 6. Weather

	Week 13 Actual	Week 14 Actual	Week 15 Forecast
Winnipeg Days < -25°C	0	0	0
Edmonton Days < -25°C	0	0	0
Vancouver Days Precip > 8mm	2	3	4

#### 1. Stocks in Store: (Page 2)

- Country stocks increased to 3.9 MMT in Week 13 utilizing 73% of the system's working capacity. Space in primary elevators is good.
- Total western port terminal stocks increased to 1.6 MMT in Week 13, utilizing 81% of the working capacity.

#### 2. Country Deliveries: (Page 3)

- Deliveries to primary elevators were 1.24 MMT in Week 13.

#### 3. Port Performance: (Pages 3-5)

- Total western port unloads were the same as the 4-week moving average and were 18% higher than Week 13 last year.
- West Coast unloads were 8,779 cars (Vancouver 7,583 and Prince Rupert 1,196), 3% higher than the 4-week moving average and 11% higher than Week 13 last year.
- Thunder Bay unloads were 2,343 cars, 7% lower than the 4-week moving average and 55% higher than Week 13 last year.
- The total average terminal out-of-car time (OCT) increased to 9.3% from 7.0% the previous week. The OCT for Week 13 was 8.3% at Vancouver, 6.2% at Thunder Bay, and 25.0% at Prince Rupert.

#### 4. Shipments: (Page 5)

- Year-to-date Western Canadian shipments from port terminal elevators at Week 13 are 18% higher than the same period last year and 11% higher than the 3-year average.

#### 5. Vessels: (Page 5)

- Vancouver vessel lineup for Week 14 2024-25 decreased to 24 vessels (The current one-year average at Vancouver is 21 vessels). Of the 24, 8 were at berth, 9 were anchored at English Bay, 1 was anchored at Burrard Inlet and 6 were anchored at Vancouver Island.
- Prince Rupert vessel lineup for Week 14 2024-25 increased to 4 vessels (The current one-year average at Prince Rupert is 3 vessels).
- Vessels cleared from Vancouver was 16 and from Prince Rupert was 2 in Week 14 2024-25.

#### 6. Weather: (Page 6)

- Temperatures across the prairies are forecasted to remain above -25°C. Railways are not expected to invoke their winter operating plans.
- Vancouver is forecast to receive high precipitation during Week 15 which may impact the ability to load grain into vessels.

# 1. Stocks in Store

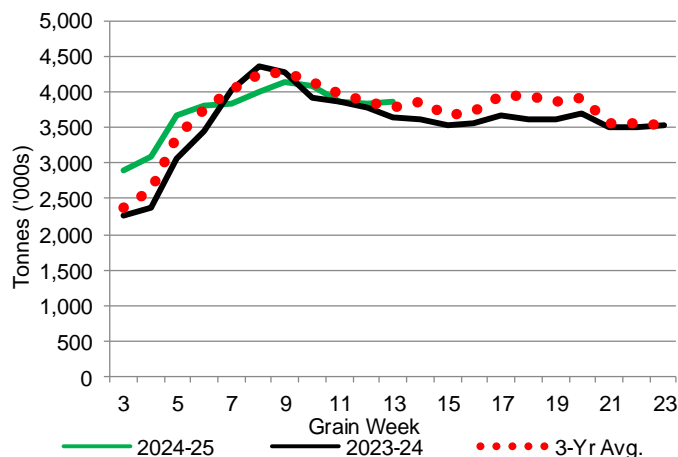
1-A1 Country Stocks ('000 tonnes) – Week 13

	MB	SK	AB	BC	Total
2024-25	897.8	1,930.0	1,022.9	20.0	3,870.7
2023-24	839.3	1,675.6	1,107.2	17.7	3,639.8
3-Yr Avg.	858.0	1,791.6	1,121.0	19.8	3,790.4
Var % - LY	7%	15%	-8%	13%	6%
Var % 3-Yr Avg.	5%	8%	-9%	1%	2%
Storage Capacity	1,622.4	4,000.1	2,508.3	32.1	8,162.9
Estimated Working Capacity	1,054.6	2,600.0	1,630.4	20.9	5,305.9
24-25 % of Wkg Cap	85%	74%	63%	96%	73%

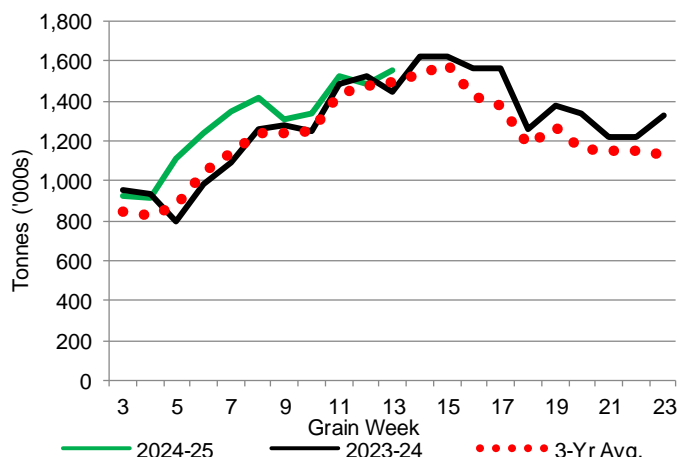
1-B1 Terminal Stocks ('000 tonnes) – Week 13

	VC	PR	West Coast	CH	TB	Total
2024-25	819.4	128.9	948.3	0.7	604.4	1,553.4
2023-24	674.3	93.4	767.7	0.7	675.4	1,443.8
3-Yr Avg.	766.2	118.0	884.1	0.7	609.5	1,494.3
Var % - LY	22%	38%	24%	0%	-11%	8%
Var % 3-Yr Avg.	7%	9%	7%	0%	-1%	4%
Storage Capacity	1,275.5	209.5	1,485.0	140.0	1,127.5	2,752.5
Estimated Working Capacity	892.9	146.7	1,039.6	98.0	789.2	1,926.8
24-25 % of Wkg Cap	92%	88%	91%	1%	77%	81%

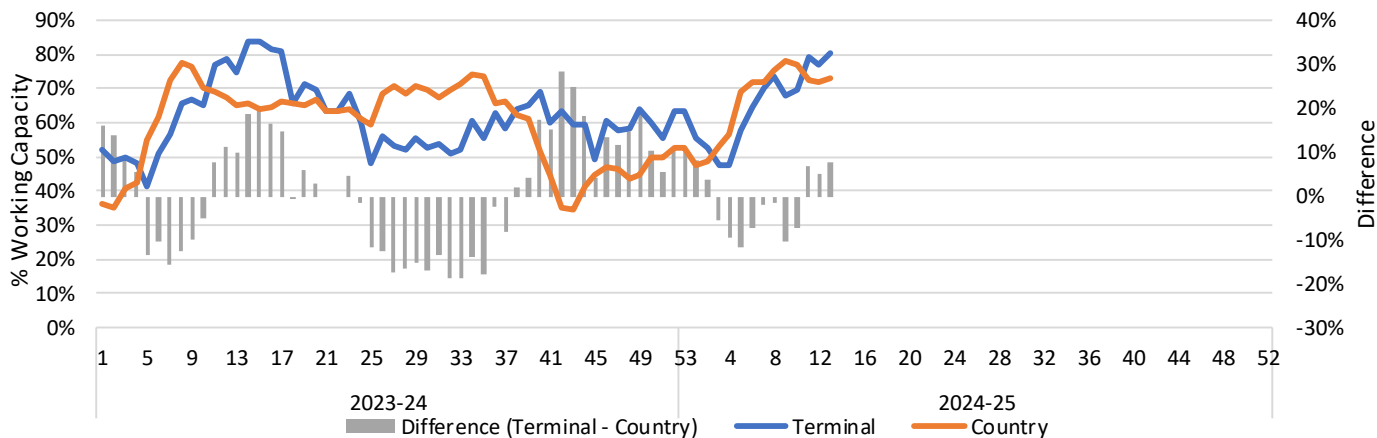
1-A2 Weekly Country Stocks in Store



1-B2 Weekly Terminal Stocks in Store



1-C Weekly Stock Balance

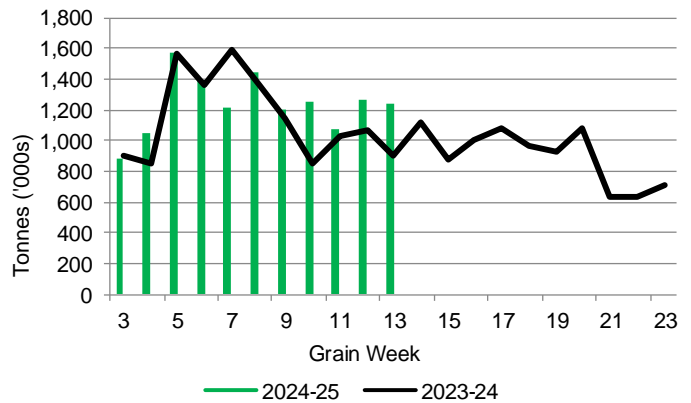


## 2. Country Deliveries

2-A Country Deliveries ('000 tonnes) – Week 13

	MB	SK	AB	BC	Total
2024-25	220.8	668.4	348.0	6.1	1,243.3
2023-24	160.9	474.5	265.8	5.9	907.1
4 Wk Avg	219.0	622.9	363.1	5.0	1,209.9
Var % to Last Year	37%	41%	31%	3%	37%
Var % To 4 Wk Avg	1%	7%	-4%	22%	3%

2-B 2024-25 Weekly Country Deliveries



## 3. Port Performance

3-A Weekly Unloads by Port (Cars) – This Year for Week 13, 4-Week Moving Average and Variances

	Vancouver	Prince Rupert	West Coast	Thunder Bay	Churchill	Total
2024-25	7,583	1,196	8,779	2,343	-	11,122
2023-24	7,312	578	7,890	1,511	n/a	9,401
4-Wk Avg.	7,347	1,209	8,556	2,514	-	11,069
Var % to Last Year	4%	107%	11%	55%	n/a	18%
Var % to 4-Wk Avg.	3%	-1%	3%	-7%	n/a	0%

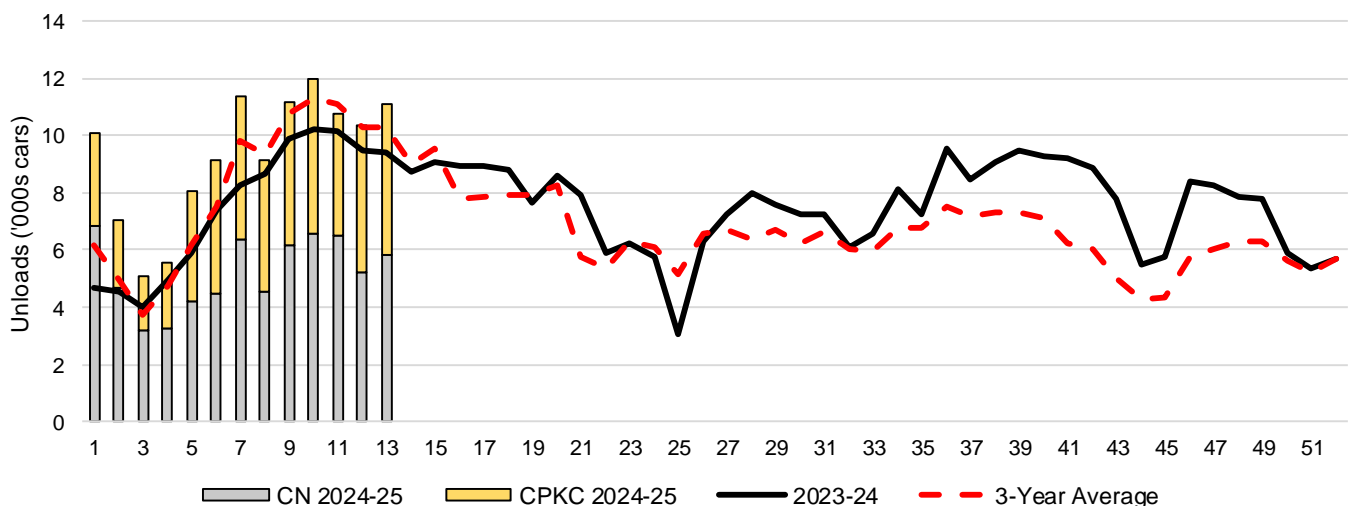
3-B Terminal Unloads by Port – This Year-to-Date as at Week 13 and Variances

YTD Unloads (cars)	Vancouver	Prince Rupert	West Coast	Thunder Bay	Churchill	Total
2024-25	83,436	10,789	94,225	26,694	-	120,919
2023-24	69,451	3,960	73,411	24,215	-	97,626
3-Yr Avg	74,236	8,014	82,250	23,992	-	106,242
Var % to Last Year	20%	172%	28%	10%	n/a	24%
Var % to 3-Yr Avg	12%	35%	15%	11%	n/a	14%

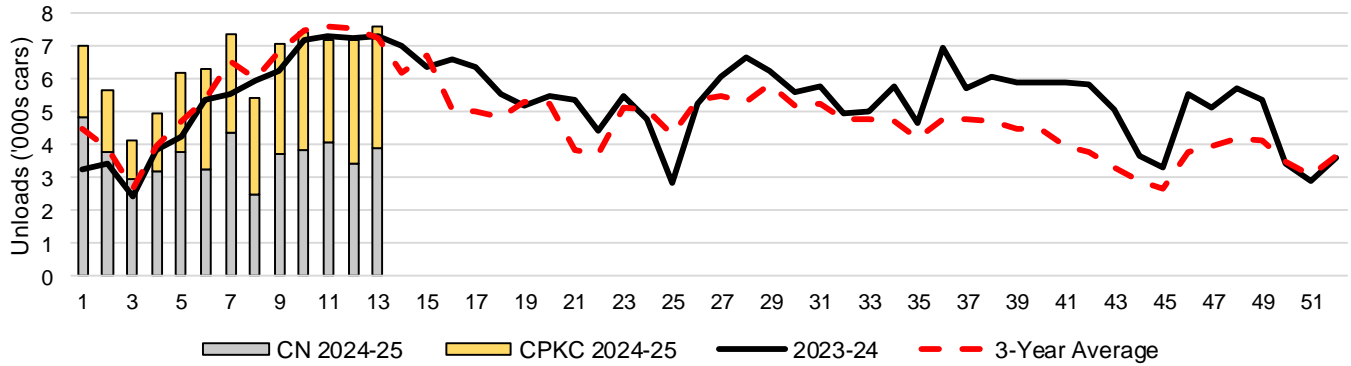
  

YTD Unloads ('000 tonnes)	Vancouver	Prince Rupert	West Coast	Thunder Bay	Churchill	Total
2024-25	7,883.9	1,036.0	8,919.9	2,599.9	-	11,519.8
2023-24	6,660.8	383.7	7,044.5	2,331.8	-	9,376.3
3-Yr Avg.	7,110.5	769.8	7,880.3	2,322.3	-	10,202.6
Var % to Last Year	18%	170%	27%	11%	n/a	23%
Var % to 3-Yr Avg.	11%	35%	13%	12%	n/a	13%

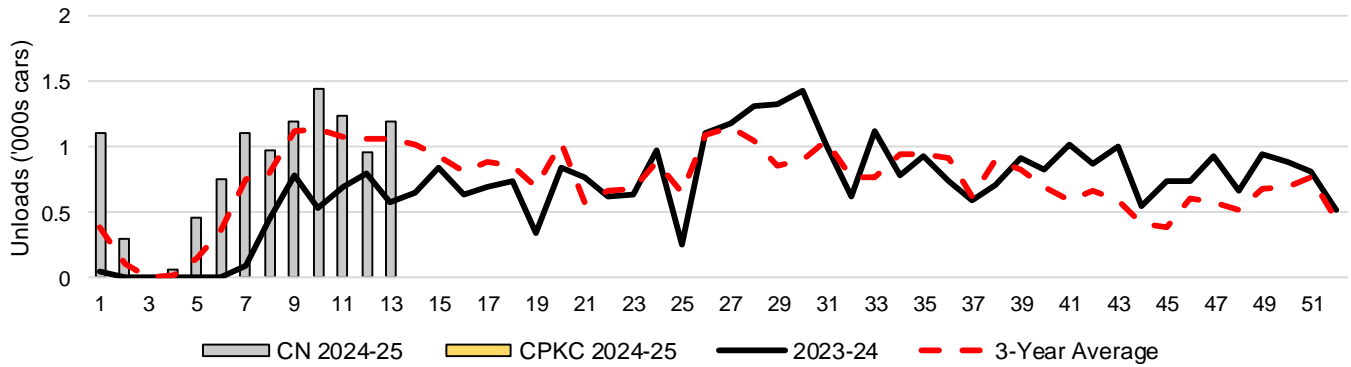
3-C Western Port Terminal Unloads (cars), Total by Carrier, This Year vs. Last Year and the 3-Year Average



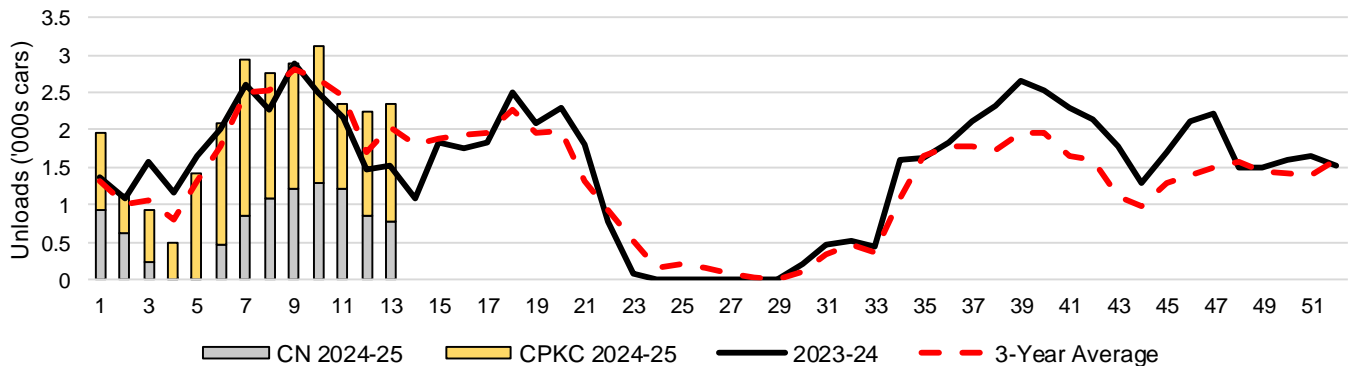
### 3-D Vancouver Terminal Unloads (cars), Total by Carrier, This Year vs. Last Year and the 3-Year Average



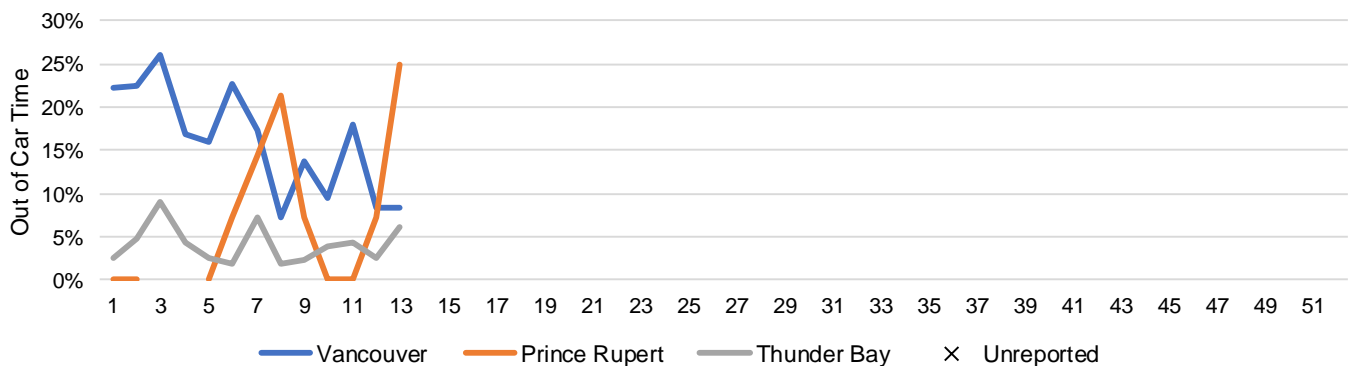
### 3-E Prince Rupert Terminal Unloads (cars), Total by Carrier, This Year vs. Last Year and the 3-Year Average



### 3-F Thunder Bay Terminal Unloads (cars), Total by Carrier, This Year vs. Last Year and the 3-Year Average



### 3-G Weekly Out-of-Car Time (% of hours out-of-cars / total hours working)



Out-of-car time is measured weekly and uses data from terminal elevators on the total number of hours the facilities are open & staffed (including overtime hours) and the corresponding number of hours that terminals have no railcars available to unload. The measure is expressed as a percentage (hours without cars to the total number of hours working).

### 3-H Monthly Unloads (cars) – This Year vs. Last Year and the 3-Year Average to Week 13 2024-25

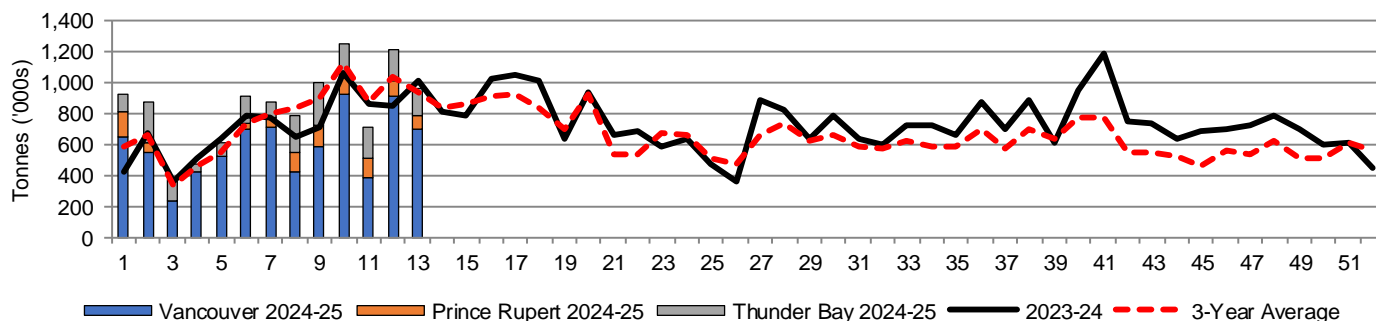
Months	Aug	Sep	Oct	Nov	Dec	Jan	Feb	Mar	Apr	May	Jun	Jul
Weeks	1-4	5-8	9-13	14-17	18-21	22-26	27-30	31-34	35-39	40-43	44-47	48-52
2024-25	27,783	37,717	55,419	-	-	-	-	-	-	-	-	-
2023-24	18,158	30,245	49,223	35,668	32,949	27,216	30,125	28,067	43,763	35,188	27,940	34,740
3-Yr Avg.	19,641	32,831	53,770	34,173	29,921	29,506	26,039	25,346	36,061	24,354	20,425	29,824
Var % to Last Year	53%	25%	13%									
Var % to 3-Yr Avg.	41%	15%	3%									

## 4. Shipments

### 4-A Shipments from Port Terminals ('000 tonnes) – This Year-to-Date as at Week 13 and Variance to Last Year-to-Date

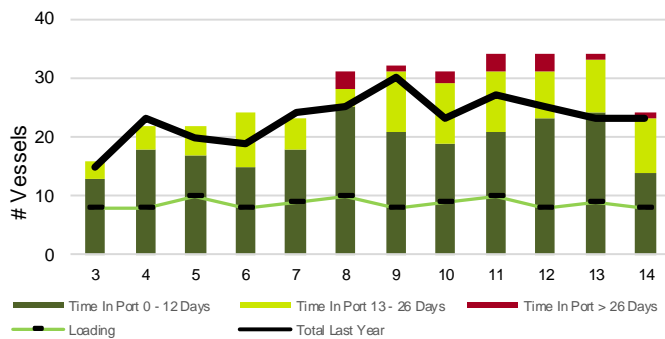
	Vancouver	Prince Rupert	West Coast	Thunder Bay	Churchill	Total
2024-25	7,696.0	1,009.7	8,705.7	2,212.1	-	10,917.8
2023-24	7,119.0	350.4	7,469.4	1,809.6	-	9,279.0
3-Yr Avg.	7,137.7	728.3	7,866.0	1,925.8	-	9,791.8
Var % to Last Year	8%	188%	17%	22%	n/a	18%
Var % to 3-Yr Avg.	8%	39%	11%	15%	n/a	11%

### 4-B Weekly Shipments ('000 tonnes) from Port Terminals – This Year vs Last Year and the 3-Year Average

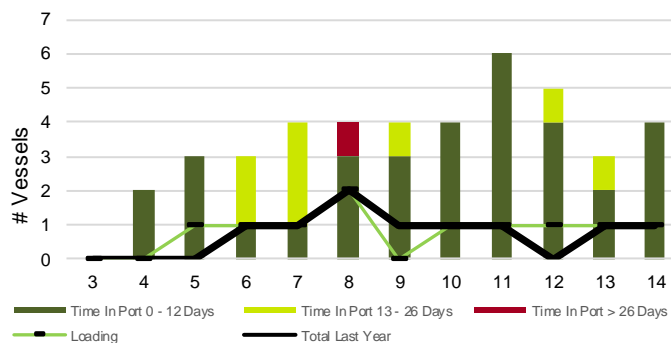


## 5. Vessels

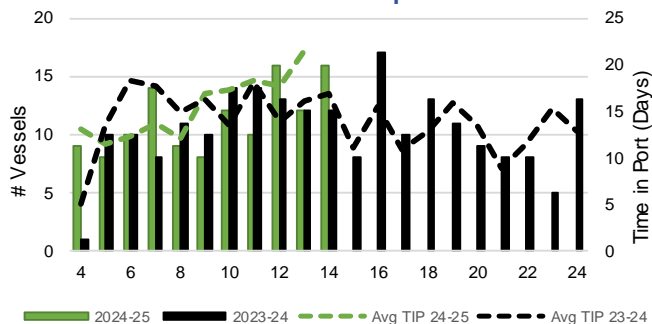
### 5-A Vessel Lineup at Vancouver as of Week 14 2024-25



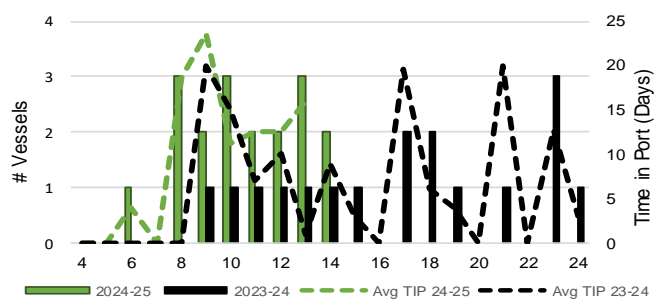
### 5-C Vessel Lineup at Prince Rupert as of Week 14 2024-25



### 5-B Vessels Cleared at Vancouver up to Week 14 2024-25



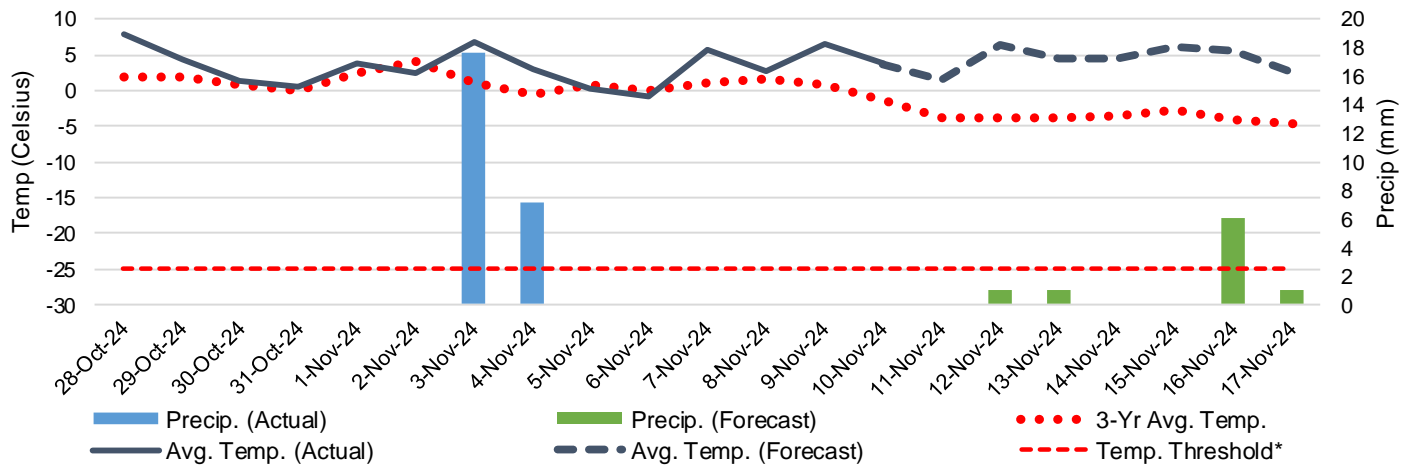
### 5-D Vessels Cleared at Prince Rupert up to Week 14 2024-25



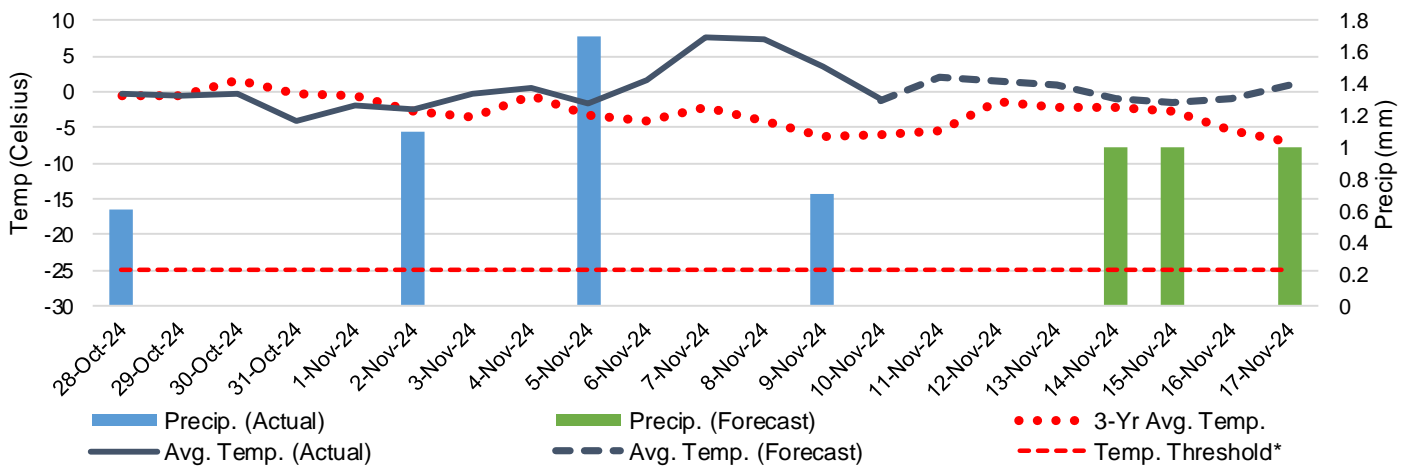
Note: The 'Time in Port' measure for 6-A and 6-C is calculated as how long each vessel in the lineup has been in port as at Sunday 23:59 of that grain week. The 'Avg Time in Port (TIP)' measure for 6-B and 6-D is the average number of days that all vessels which cleared that week were in port. These measures use vessel data provided by the BC Chamber of Shipping and Pacific Pilotage Authority.

# 6. Weather

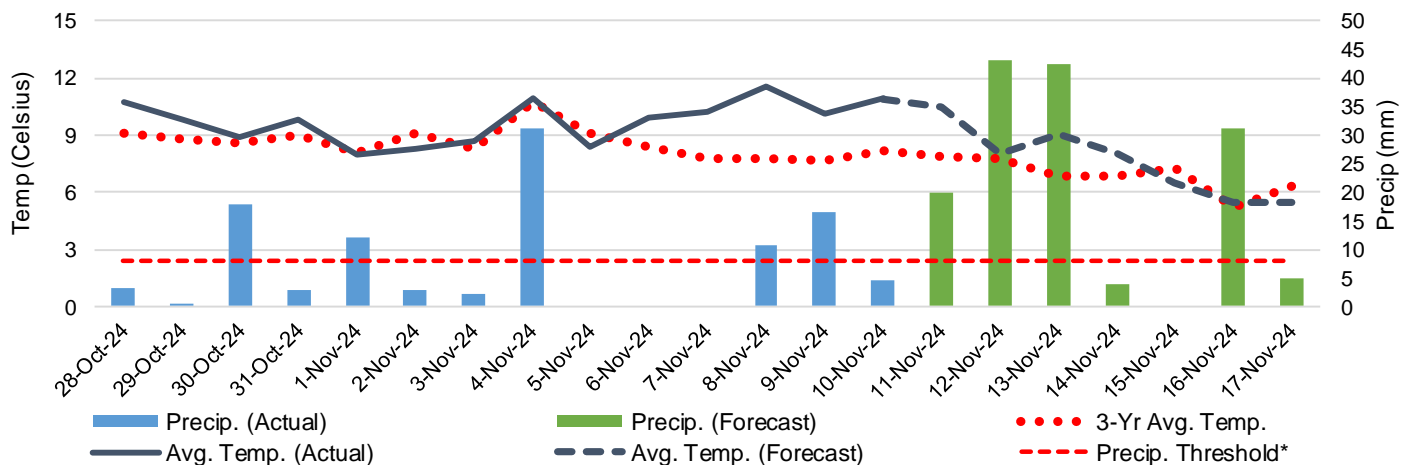
6-A Actual and Forecasted Weather at Winnipeg up to Week 15 2024-25



6-B Actual and Forecasted Weather at Edmonton up to Week 15 2024-25



6-C Actual and Forecasted Weather at Vancouver up to Week 15 2024-25



\*Note: Precip Threshold refers to 8mm of rain. At this level of precipitation, vessel loading may be delayed. The duration of the delay will be dependent on the ship, the duration of rainfall, and the amount of precipitation. 8mm is a general guideline and is not meant to be a definitive limit.  
Source: Environment and Climate Change Canada, The Weather Network (Forecast)