

Grain Monitoring Program

Weekly Performance Update

December 17, 2024

For Grain Week 18 2024-25 CY
December 02, 2024 to December 08, 2024

Summary

	Week 18	Week 17	Var. from Last Year	
1. Stocks in Store ('000 tonnes)				
Country Elevators	↑ 3,731.8	3,505.3	3%	
% of Working Capacity	70%	66%		
Terminal Elevators	↓ 1,465.7	1,531.1	16%	
% of Working Capacity	76%	79%		
2. Country Deliveries ('000 tonnes)				
Country Deliveries	↑ 1,316.8	1,009.9	37%	
3. Port Performance (Cars)				
Vancouver Unloads	↓ 6,293	6,801	13%	
Prince Rupert Unloads	↑ 888	853	20%	
Churchill Unloads	— 0	0	n/a	
Thunder Bay Unloads	↑ 1,831	1,358	-26%	
Total Weekly Unloads	— 9,012	9,012	3%	
4-Week Rolling Average	↓ 9,848	10,450	10%	
Var. to 4-Week Rolling Average	-8%	-14%		
YTD Unloads	172,179	163,167	21%	
Weekly Out-of-Car Time	↑ 13.7%	10.9%	33.3%	
4. Terminal Shipments Year-to-Date ('000 tonnes)				
Vancouver	↑ 11,025.5	10,582.2	5%	
Prince Rupert	↑ 1,605.3	1,507.1	124%	
Churchill	— 0.0	0.0	n/a	
Thunder Bay	↑ 3,134.5	2,886.9	14%	
Total Western Canada	↑ 15,765.3	14,976.2	13%	
5. Vessels as at Dec 15, 2024				
	Week 19	Week 18	Var. from Last Year	
Vancouver	Vessel Lineup in port	↑ 27	24	125%
	Vessels Cleared	↓ 10	12	-9%
	Vessels Arrived	↑ 13	12	160%
Prince Rupert	Vessel Lineup in port	↓ 6	7	500%
	Vessels Cleared	↑ 3	2	200%
	Vessels Arrived	↓ 2	4	0%
Vessels Inbound Dec 16, 2024 to Dec 22, 2024 (Week 20)				
Vancouver	12			
Prince Rupert	4			
6. Weather				
	Week 18 Actual	Week 19 Actual	Week 20 Forecast	
Winnipeg Days < -25°C	0	2	0	
Edmonton Days < -25°C	0	0	0	
Vancouver Days Precip > 8mm	1	1	5	

Note to Readers: The next GMP Weekly Performance Update will be published on Tuesday December 31, 2024.

1. Stocks in Store: (Page 2)

- Country stocks increased to 3.7 MMT in Week 18 utilizing 70% of the system's working capacity. Space in primary elevators is good.
- Total western port terminal stocks decreased to 1.5 MMT in Week 18, utilizing 76% of the working capacity.

2. Country Deliveries: (Page 3)

- Deliveries to primary elevators were 1.32 MMT in Week 18.

3. Port Performance: (Pages 3-5)

- Total western port unloads were 8% lower than the 4-week moving average and 3% higher than Week 18 last year.
- West Coast unloads were 7,181 cars (Vancouver 6,293 and Prince Rupert 888), 10% lower than the 4-week moving average and 14% higher than Week 18 last year.
- Thunder Bay unloads were 1,831 cars, 4% lower than the 4-week moving average and 26% lower than Week 18 last year.
- The total average terminal out-of-car time (OCT) increased to 13.7% from 10.9% the previous week. The OCT for Week 18 was 13.4% at Vancouver, 35.7% at Prince Rupert, and 0.0% at Thunder Bay.

4. Shipments: (Page 5)

- Year-to-date Western Canadian shipments from port terminal elevators at Week 18 are 13% higher than the same period last year and 7% higher than the 3-year average.

5. Vessels: (Page 5)

- Vancouver vessel lineup for Week 19 2024-25 increased to 27 vessels (The current one-year average at Vancouver is 22 vessels). Of the 27, 9 were at berth, 10 were anchored at English Bay, 1 was anchored at Burrard Inlet, and 7 were anchored at Vancouver Island.
- Prince Rupert vessel lineup for Week 19 2024-25 decreased to 6 vessels (The current one-year average at Prince Rupert is 3 vessels).
- Vessels cleared from Vancouver was 10 and from Prince Rupert was 3 in Week 19 2024-25.

6. Weather: (Page 6)

- Vancouver is forecast to receive high precipitation during Week 20 which may impact the ability to load grain into vessels.
- Temperature forecasts outside of the major cities in Western Canada may fall below -25C, activating railways winter operations plans.

1. Stocks in Store

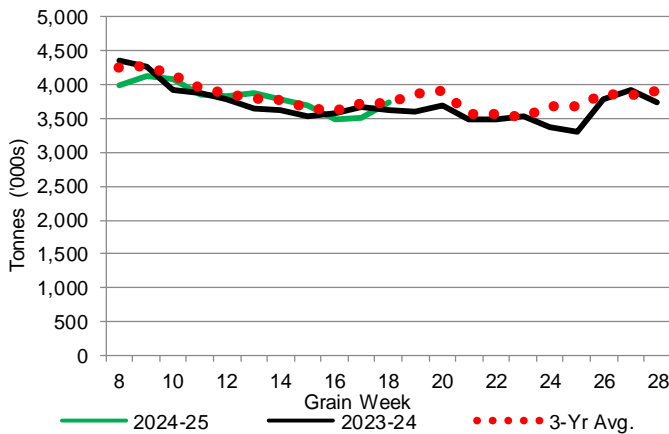
1-A1 Country Stocks ('000 tonnes) – Week 18

	MB	SK	AB	BC	Total
2024-25	763.3	1,963.6	992.0	12.9	3,731.8
2023-24	754.2	1,729.3	1,114.1	22.8	3,620.4
3-Yr Avg.	754.3	1,826.8	1,123.5	19.0	3,723.6
Var % - LY	1%	14%	-11%	-43%	3%
Var % 3-Yr Avg.	1%	7%	-12%	-32%	0%
Storage Capacity	1,622.4	4,000.1	2,508.3	32.1	8,162.9
Estimated Working Capacity	1,054.6	2,600.0	1,630.4	20.9	5,305.9
24-25 % of Wkg Cap	72%	76%	61%	62%	70%

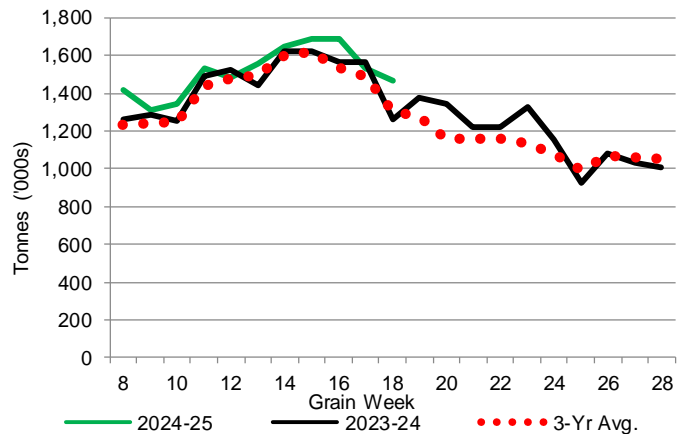
1-B1 Terminal Stocks ('000 tonnes) – Week 18

	VC	PR	West Coast	CH	TB	Total
2024-25	778.6	87.2	865.8	0.7	599.2	1,465.7
2023-24	551.2	123.7	674.9	0.7	586.2	1,261.8
3-Yr Avg.	616.1	108.0	724.1	0.7	582.0	1,306.7
Var % - LY	41%	-30%	28%	0%	2%	16%
Var % 3-Yr Avg.	26%	-19%	20%	0%	3%	12%
Storage Capacity	1,275.5	209.5	1,485.0	140.0	1,127.5	2,752.5
Estimated Working Capacity	892.9	146.7	1,039.6	98.0	789.2	1,926.8
24-25 % of Wkg Cap	87%	59%	83%	1%	76%	76%

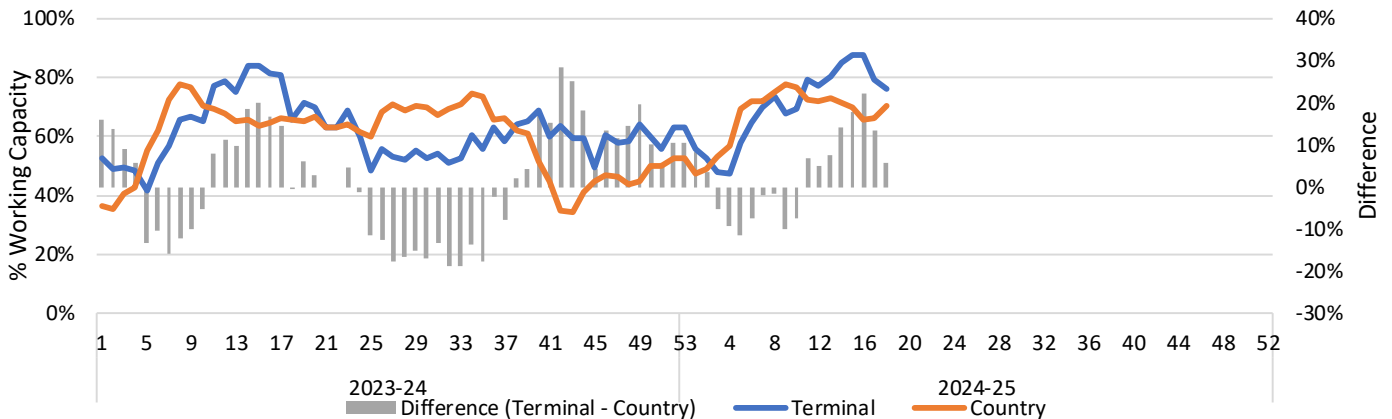
1-A2 Weekly Country Stocks in Store



1-B2 Weekly Terminal Stocks in Store



1-C Weekly Stock Balance

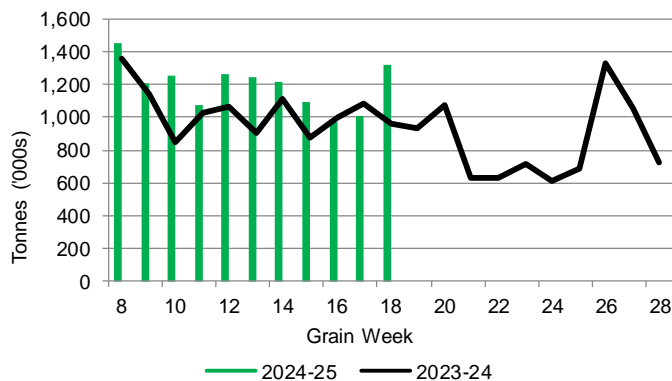


2. Country Deliveries

2-A Country Deliveries ('000 tonnes) – Week 18

	MB	SK	AB	BC	Total
2024-25	219.3	731.8	359.8	5.9	1,316.8
2023-24	205.4	495.4	260.1	2.8	963.7
4 Wk Avg	194.4	586.1	312.6	5.3	1,098.3
Var % to Last Year	7%	48%	38%	111%	37%
Var % To 4 Wk Avg	13%	25%	15%	11%	20%

2-B 2024-25 Weekly Country Deliveries



3. Port Performance

3-A Weekly Unloads by Port (Cars) – This Year for Week 18, 4-Week Moving Average and Variances

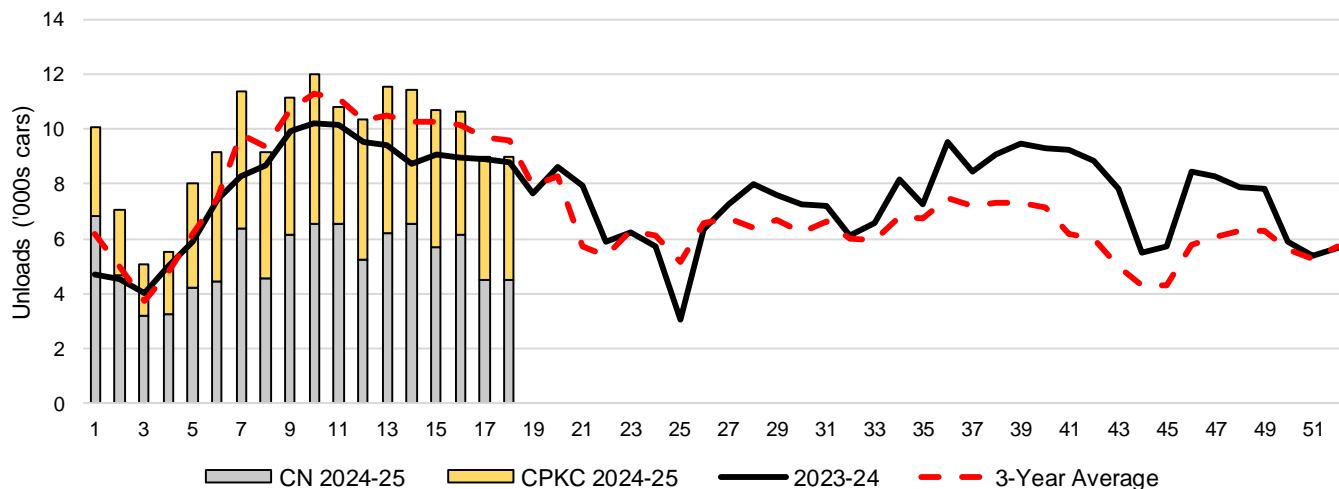
	Vancouver	Prince Rupert	West Coast	Thunder Bay	Churchill	Total
2024-25	6,293	888	7,181	1,831	-	9,012
2023-24	5,559	742	6,301	2,491	n/a	8,792
4-Wk Avg.	6,822	1,113	7,935	1,913	-	9,848
Var % to Last Year	13%	20%	14%	-26%	n/a	3%
Var % to 4-Wk Avg.	-8%	-20%	-10%	-4%	n/a	-8%

3-B Terminal Unloads by Port – This Year-to-Date as at Week 18 and Variances

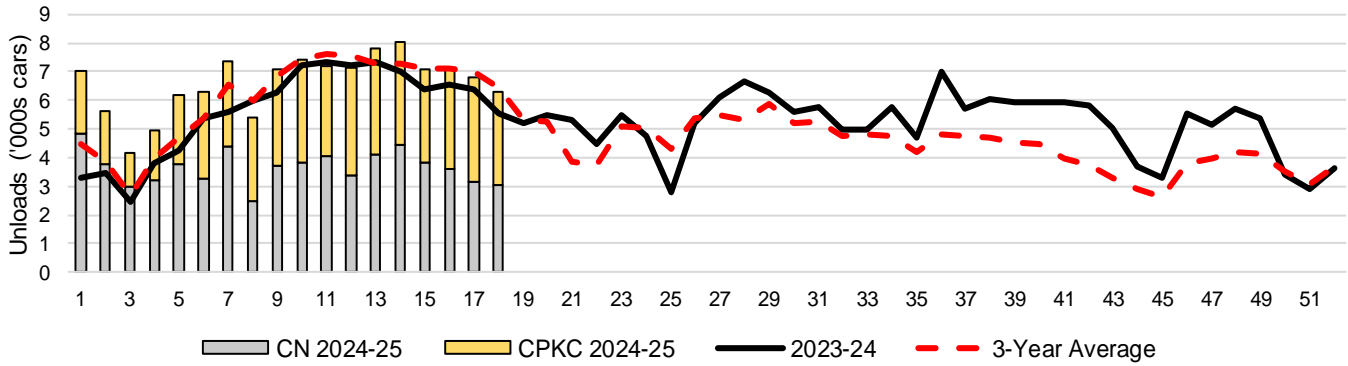
YTD Unloads (cars)	Vancouver	Prince Rupert	West Coast	Thunder Bay	Churchill	Total
2024-25	119,012	16,532	135,544	36,635	-	172,179
2023-24	101,347	7,531	108,878	33,208	-	142,086
3-Yr Avg	109,196	13,258	122,454	33,902	-	156,357
Var % to Last Year	17%	120%	24%	10%	n/a	21%
Var % to 3-Yr Avg	9%	25%	11%	8%	n/a	10%

YTD Unloads ('000 tonnes)	Vancouver	Prince Rupert	West Coast	Thunder Bay	Churchill	Total
2024-25	11,286.1	1,591.6	12,877.7	3,554.3	-	16,432.0
2023-24	9,750.2	733.8	10,484.0	3,209.6	-	13,693.6
3-Yr Avg.	10,474.7	1,276.6	11,751.3	3,274.9	-	15,026.1
Var % to Last Year	16%	117%	23%	11%	n/a	20%
Var % to 3-Yr Avg.	8%	25%	10%	9%	n/a	9%

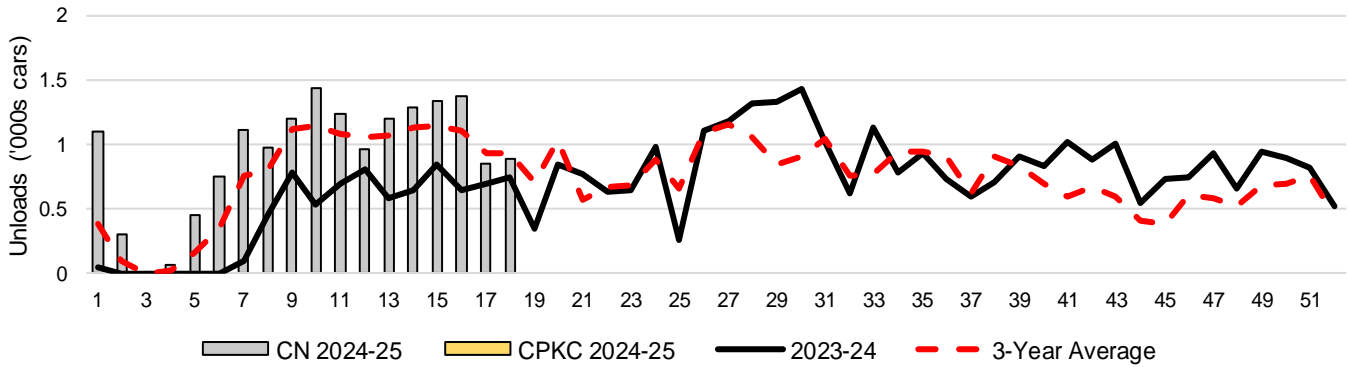
3-C Western Port Terminal Unloads (cars), Total by Carrier, This Year vs. Last Year and the 3-Year Average



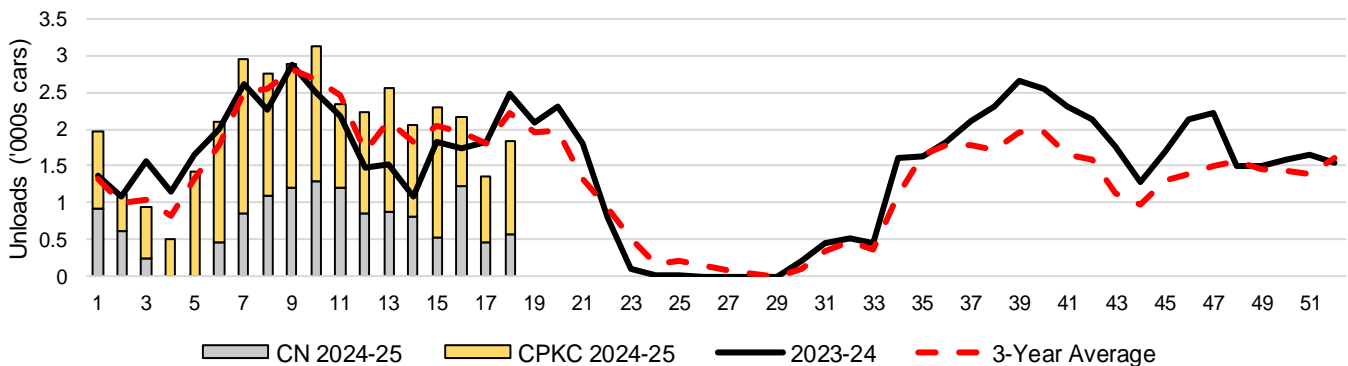
3-D Vancouver Terminal Unloads (cars), Total by Carrier, This Year vs. Last Year and the 3-Year Average



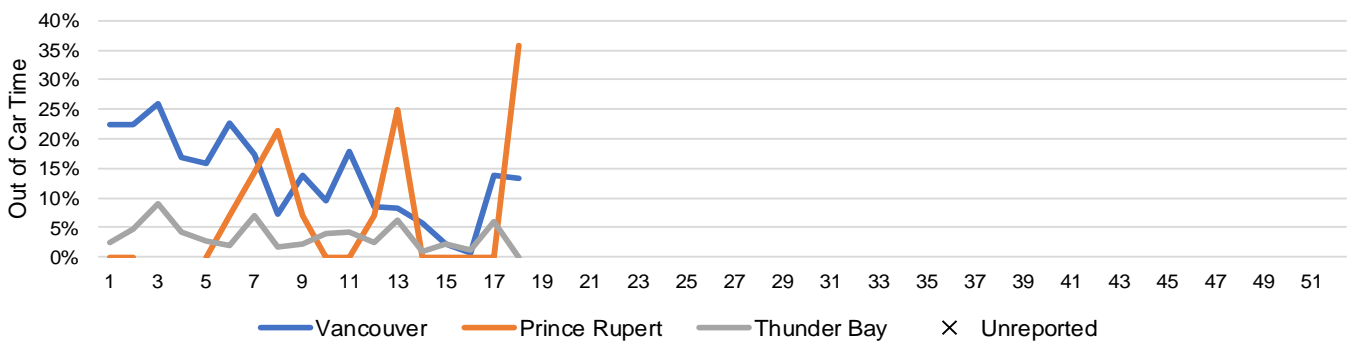
3-E Prince Rupert Terminal Unloads (cars), Total by Carrier, This Year vs. Last Year and the 3-Year Average



3-F Thunder Bay Terminal Unloads (cars), Total by Carrier, This Year vs. Last Year and the 3-Year Average



3-G Weekly Out-of-Car Time (% of hours out-of-cars / total hours working)



Out-of-car time is measured weekly and uses data from terminal elevators on the total number of hours the facilities are open & staffed (including overtime hours) and the corresponding number of hours that terminals have no railcars available to unload. The measure is expressed as a percentage (hours without cars to the total number of hours working).

3-H Monthly Unloads (cars) – This Year vs. Last Year and the 3-Year Average to Week 17 2024-25

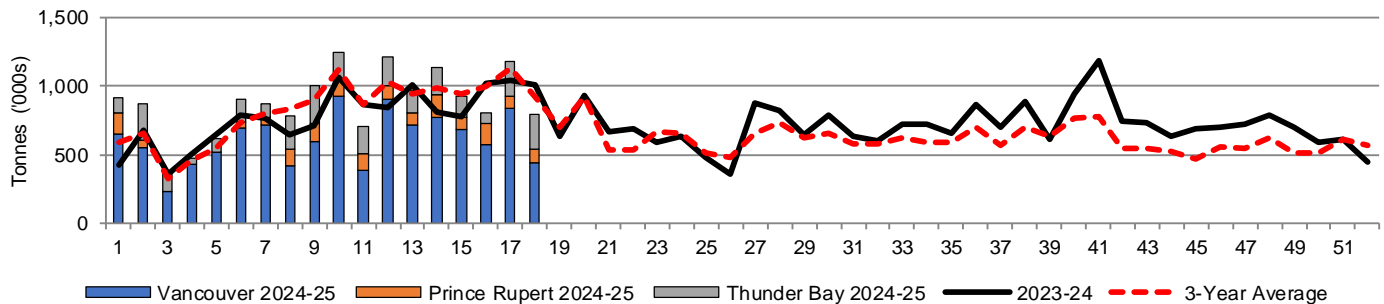
Months	Aug	Sep	Oct	Nov	Dec	Jan	Feb	Mar	Apr	May	Jun	Jul
Weeks	1-4	5-8	9-13	14-17	18-21	22-26	27-30	31-34	35-39	40-43	44-47	48-52
2024-25	27,783	37,717	55,869	41,798	-	-	-	-	-	-	-	-
2023-24	18,158	30,245	49,223	35,668	32,949	27,216	30,125	28,067	43,763	35,188	27,940	34,740
3-Yr Avg.	19,641	32,831	53,920	40,398	29,921	29,506	26,039	25,346	36,061	24,354	20,425	29,824
Var % to Last Year	53%	25%	14%	17%								
Var % to 3-Yr Avg.	41%	15%	4%	3%								

4. Shipments

4-A Shipments from Port Terminals ('000 tonnes) – This Year-to-Date as of Week 18 and Variance to Last Year-to-Date

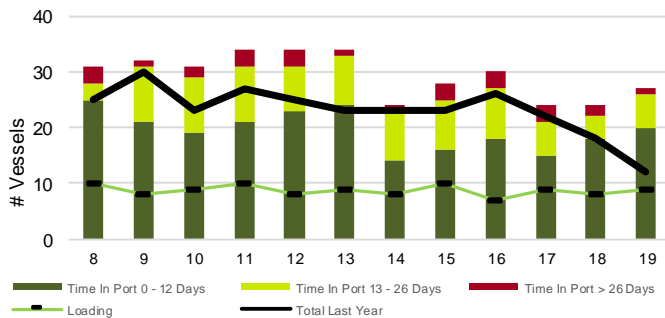
	Vancouver	Prince Rupert	West Coast	Thunder Bay	Churchill	Total
2024-25	11,025.5	1,605.3	12,630.8	3,134.5	-	15,765.3
2023-24	10,482.8	716.0	11,198.8	2,739.1	-	13,937.9
3-Yr Avg.	10,631.5	1,243.1	11,874.6	2,896.6	-	14,771.2
Var % to Last Year	5%	124%	13%	14%	n/a	13%
Var % to 3-Yr Avg.	4%	29%	6%	8%	n/a	7%

4-B Weekly Shipments ('000 tonnes) from Port Terminals – This Year vs Last Year and the 3-Year Average

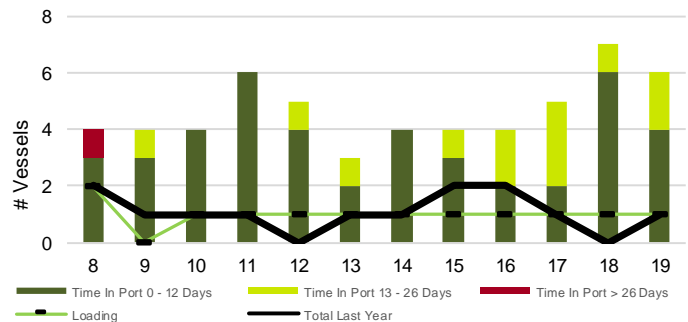


5. Vessels

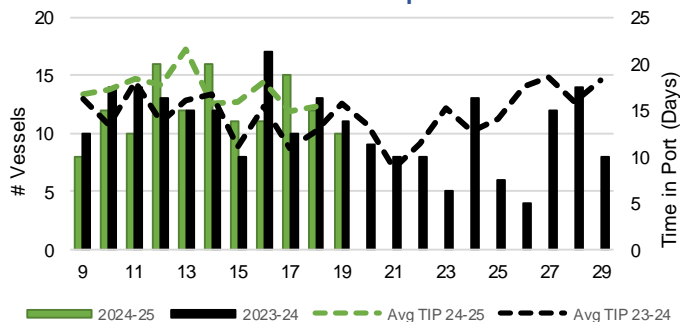
5-A Vessel Lineup at Vancouver as of Week 19 2024-25



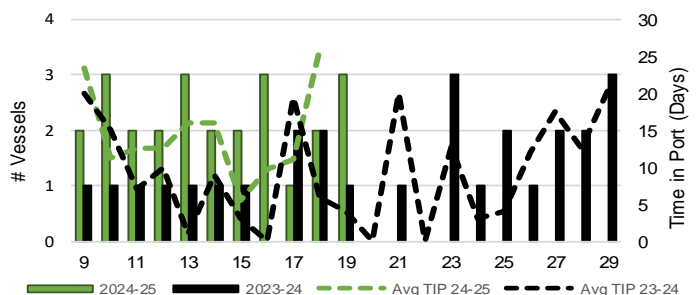
5-C Vessel Lineup at Prince Rupert as of Week 19 2024-25



5-B Vessels Cleared at Vancouver up to Week 19 2024-25



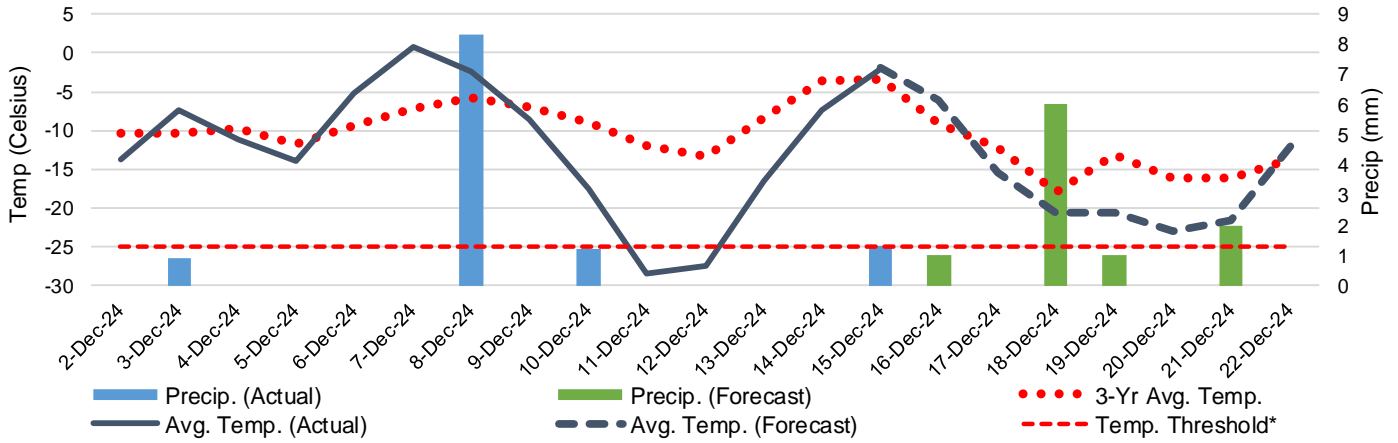
5-D Vessels Cleared at Prince Rupert up to Week 19 2024-25



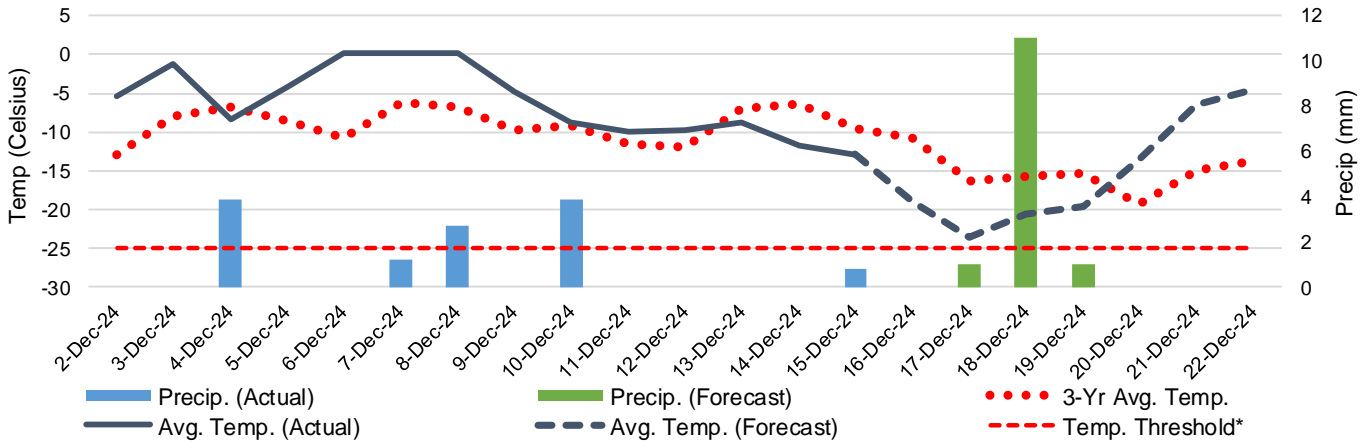
Note: The 'Time in Port' measure for 6-A and 6-C is calculated as how long each vessel in the lineup has been in port as at Sunday 23:59 of that grain week. The 'Avg Time in Port (TIP)' measure for 6-B and 6-D is the average number of days that all vessels which cleared that week were in port. These measures use vessel data provided by the BC Chamber of Shipping and Pacific Pilotage Authority.

6. Weather

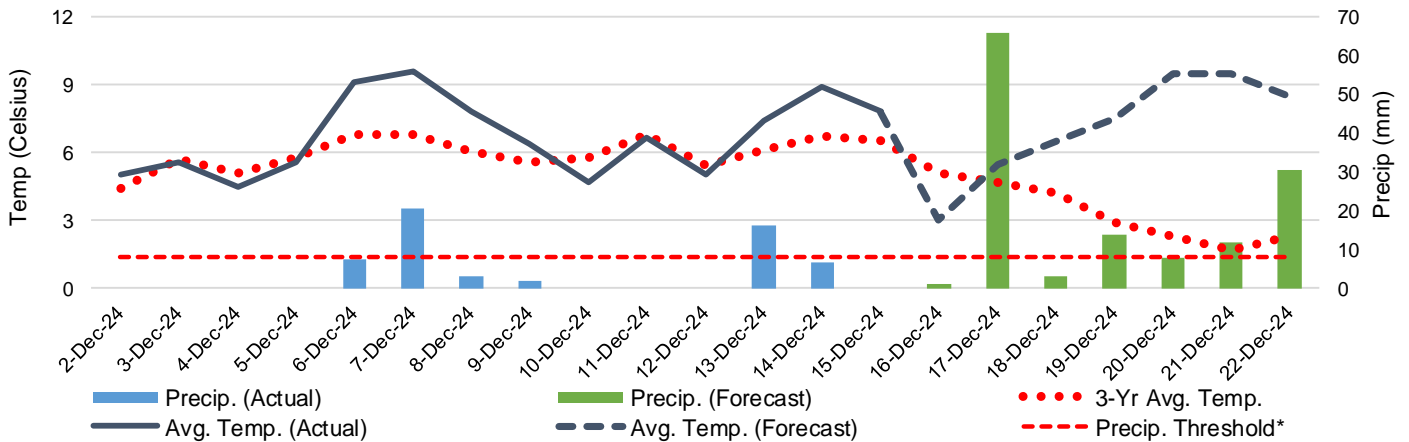
6-A Actual and Forecasted Weather at Winnipeg up to Week 20 2024-25



6-B Actual and Forecasted Weather at Edmonton up to Week 20 2024-25



6-C Actual and Forecasted Weather at Vancouver up to Week 20 2024-25



*Note: Precip Threshold refers to 8mm of rain. At this level of precipitation, vessel loading may be delayed. The duration of the delay will be dependent on the ship, the duration of rainfall, and the amount of precipitation. 8mm is a general guideline and is not meant to be a definitive limit.
Source: Environment and Climate Change Canada, The Weather Network (Forecast)