

# Grain Monitoring Program

## Weekly Performance Update

January 14, 2025

For Grain Week 22 2024-25 CY  
December 30, 2024 to January 05, 2025

### Summary

		Week 22	Week 21	Var. from Last Year	
<b>1. Stocks in Store ('000 tonnes)</b>					
Country Elevators	↓	3,097.1	3,458.1	-11%	
% of Working Capacity		58%	65%		
Terminal Elevators	↑	1,185.1	1,083.8	-3%	
% of Working Capacity		62%	56%		
<b>2. Country Deliveries ('000 tonnes)</b>					
Country Deliveries	↑	587.7	358.8	-7%	
<b>3. Port Performance (Cars)</b>					
Vancouver Unloads	↑	5,814	4,043	31%	
Prince Rupert Unloads	↑	1,164	839	86%	
Churchill Unloads	—	0	0	n/a	
Thunder Bay Unloads	↓	1,482	1,782	88%	
Total Weekly Unloads	↑	8,460	6,664	44%	
4-Week Rolling Average	↓	8,287	8,425	10%	
Var. to 4-Week Rolling Average		2%	-21%		
YTD Unloads		205,326	196,866	19%	
Weekly Out-of-Car Time	↓	3.9%	8.9%	-27.9%	
<b>4. Terminal Shipments Year-to-Date ('000 tonnes)</b>					
Vancouver	↑	13,154.1	12,756.1	6%	
Prince Rupert	↑	2,002.0	1,919.1	122%	
Churchill	—	0.0	0.0	n/a	
Thunder Bay	↑	3,962.3	3,850.6	11%	
Total Western Canada	↑	19,118.4	18,525.8	13%	
<b>5. Vessels as at Jan 12, 2025</b>					
		Week 23	Week 22	Var. from Last Year	
Vancouver	Vessel Lineup in port	↓	23	24	15%
	Vessels Cleared	↑	15	9	200%
	Vessels Arrived	↑	14	7	40%
Prince Rupert	Vessel Lineup in port	↑	6	5	n/a
	Vessels Cleared	↓	1	3	-67%
	Vessels Arrived	↑	2	0	n/a
<b>Vessels Inbound Jan 13, 2025 to Jan 19, 2025 (Week 24)</b>					
Vancouver		17			
Prince Rupert		1			
<b>6. Weather</b>					
		Week 22 Actual	Week 23 Actual	Week 24 Forecast	
Winnipeg Days < -25°C		2	0	2	
Edmonton Days < -25°C		0	0	0	
Vancouver Days Precip > 8mm		2	1	0	

### 1. Stocks in Store: (Page 2)

- Country stocks decreased to 3.1 MMT in Week 22 utilizing 58% of the system's working capacity. Space in primary elevators is good.
- Total western port terminal stocks increased to 1.2 MMT in Week 22, utilizing 62% of the working capacity.

### 2. Country Deliveries: (Page 3)

- Deliveries to primary elevators were 0.59 MMT in Week 22.

### 3. Port Performance: (Pages 3-5)

- Total western port unloads were 2% higher than the 4-week moving average and 44% higher than Week 22 last year.
- West Coast unloads were 6,978 cars (Vancouver 5,814 and Prince Rupert 1,164), 8% higher than the 4-week moving average and 37% higher than Week 22 last year.
- Thunder Bay unloads were 1,482 cars, 18% lower than the 4-week moving average and 88% higher than Week 22 last year.
- The total average terminal out-of-car time (OCT) decreased to 3.9% from 8.9% the previous week. The OCT for Week 22 was 4.6% at Vancouver and 1.7% at Thunder Bay. At the time of publishing, Prince Rupert had not yet reported Week 22 OCT.

### 4. Shipments: (Page 5)

- Year-to-date Western Canadian shipments from port terminal elevators at Week 22 are 13% higher than the same period last year and 7% higher than the 3-year average.
- The Great Lakes – St. Lawrence Seaway System closing of navigation dates, with case-by-case permissions for final clearance, are as follows:
  - Montreal – Lake Ontario Section: Dec 24 (clear by Jan 05)
  - Welland Canal: Dec 26 (clear by Jan 10)
  - Sault St. Marie Locks and Canal: Jan 15

### 5. Vessels: (Page 5)

- Vancouver vessel lineup for Week 23 2024-25 decreased to 23 vessels (The current one-year average at Vancouver is 22 vessels). Of the 23, 8 were at berth, 11 were anchored at English Bay, and 4 were anchored at Vancouver Island.
- Prince Rupert vessel lineup for Week 23 2024-25 increased to 6 vessels (The current one-year average at Prince Rupert is 4 vessels).
- Vessels cleared from Vancouver was 15 and from Prince Rupert was 1 in Week 23 2024-25.

### 6. Weather: (Page 6)

- Temperatures across the prairies are forecasted to drop below -25C regionally. Railways may invoke their winter operating plans where required.

# 1. Stocks in Store

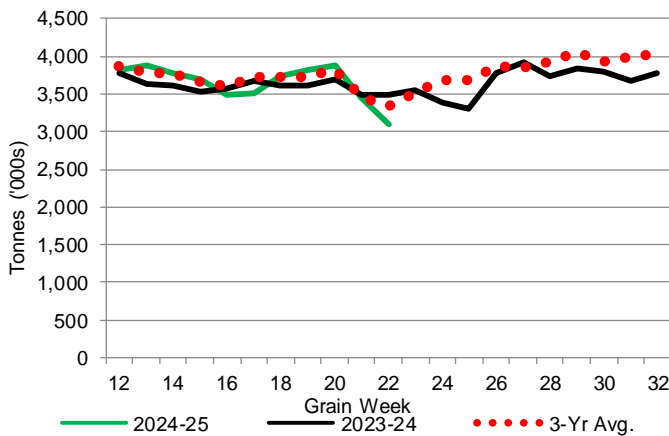
1-A1 Country Stocks ('000 tonnes) – Week 22

	MB	SK	AB	BC	Total
2024-25	664.1	1,598.8	822.3	11.9	3,097.1
2023-24	716.5	1,615.5	1,138.8	23.7	3,494.5
3-Yr Avg.	659.5	1,636.2	1,018.1	20.1	3,333.9
Var % - LY	-7%	-1%	-28%	-50%	-11%
Var % 3-Yr Avg.	1%	-2%	-19%	-41%	-7%
Storage Capacity	1,622.4	4,000.1	2,508.3	32.1	8,162.9
Estimated Working Capacity	1,054.6	2,600.0	1,630.4	20.9	5,305.9
24-25 % of Wkg Cap	63%	61%	50%	57%	58%

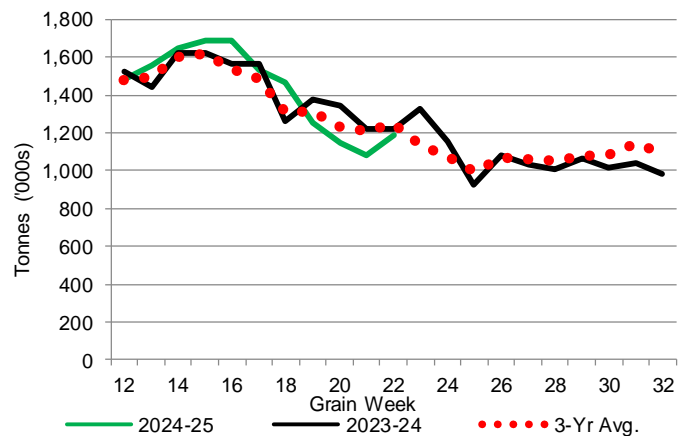
1-B1 Terminal Stocks ('000 tonnes) – Week 22

	VC	PR	West Coast	CH	TB	Total
2024-25	705.4	107.7	813.1	0.7	371.3	1,185.1
2023-24	755.9	123.7	879.6	0.7	339.6	1,219.9
3-Yr Avg.	756.6	102.6	859.1	0.7	384.7	1,244.6
Var % - LY	-7%	-13%	-8%	0%	9%	-3%
Var % 3-Yr Avg.	-7%	5%	-5%	0%	-3%	-5%
Storage Capacity	1,275.5	209.5	1,485.0	140.0	1,127.5	2,752.5
Estimated Working Capacity	892.9	146.7	1,039.6	98.0	789.2	1,926.8
24-25 % of Wkg Cap	79%	73%	78%	1%	47%	62%

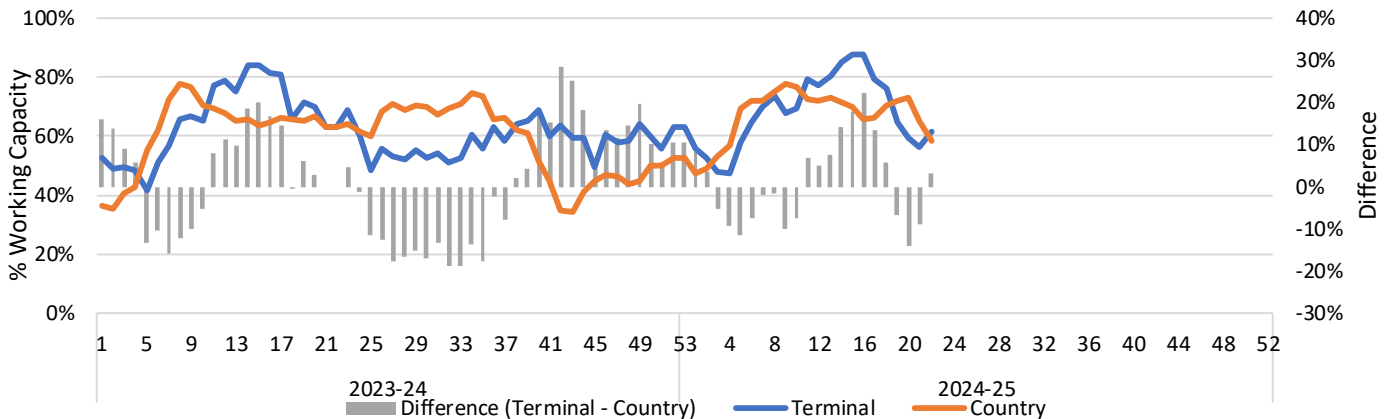
1-A2 Weekly Country Stocks in Store



1-B2 Weekly Terminal Stocks in Store



1-C Weekly Stock Balance

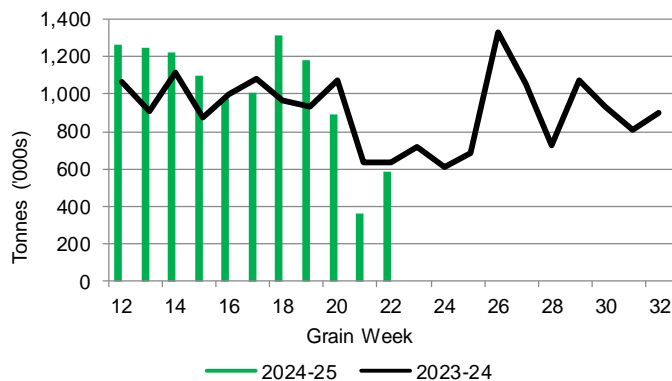


## 2. Country Deliveries

2-A Country Deliveries ('000 tonnes) – Week 22

	MB	SK	AB	BC	Total
2024-25	112.9	318.4	151.9	4.5	587.7
2023-24	112.5	312.4	200.3	5.6	630.7
4 Wk Avg	125.3	381.9	241.2	5.7	754.1
Var % to Last Year	0%	2%	-24%	-19%	-7%
Var % To 4 Wk Avg	-10%	-17%	-37%	-21%	-22%

2-B 2024-25 Weekly Country Deliveries



## 3. Port Performance

3-A Weekly Unloads by Port (Cars) – This Year for Week 22, 4-Week Moving Average and Variances

	Vancouver	Prince Rupert	West Coast	Thunder Bay	Churchill	Total
2024-25	5,814	1,164	6,978	1,482	-	8,460
2023-24	4,452	626	5,078	790	n/a	5,868
4-Wk Avg.	5,382	1,092	6,474	1,812	-	8,287
Var % to Last Year	31%	86%	37%	88%	n/a	44%
Var % to 4-Wk Avg.	8%	7%	8%	-18%	n/a	2%

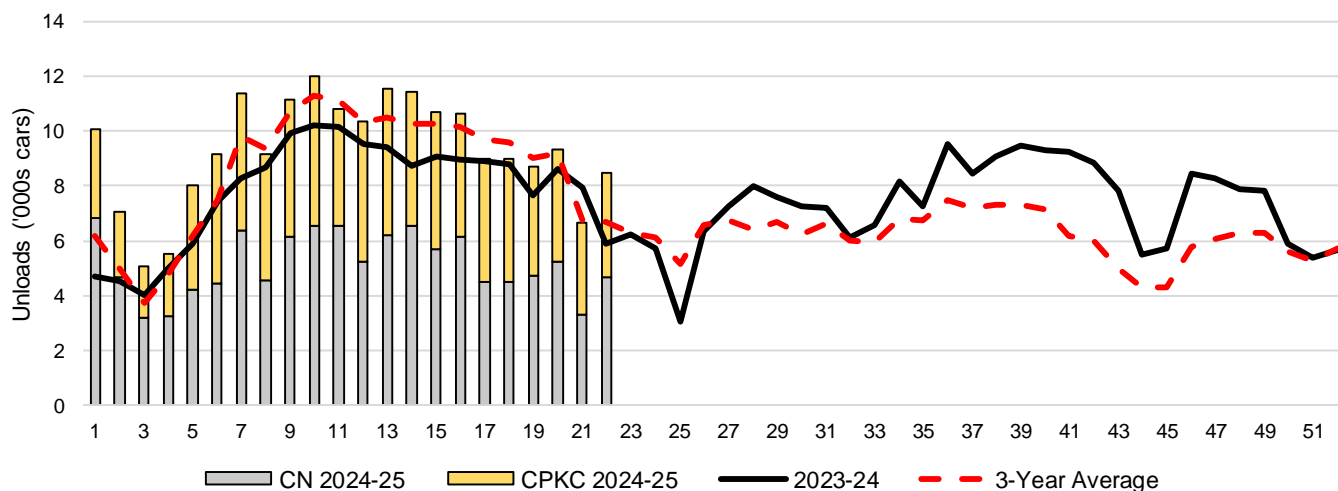
3-B Terminal Unloads by Port – This Year-to-Date as at Week 22 and Variances

YTD Unloads (cars)	Vancouver	Prince Rupert	West Coast	Thunder Bay	Churchill	Total
2024-25	140,540	20,901	161,441	43,885	-	205,326
2023-24	121,811	10,108	131,919	40,192	-	172,111
3-Yr Avg	130,311	16,945	147,256	40,783	-	188,039
Var % to Last Year	15%	107%	22%	9%	n/a	19%
Var % to 3-Yr Avg	8%	23%	10%	8%	n/a	9%

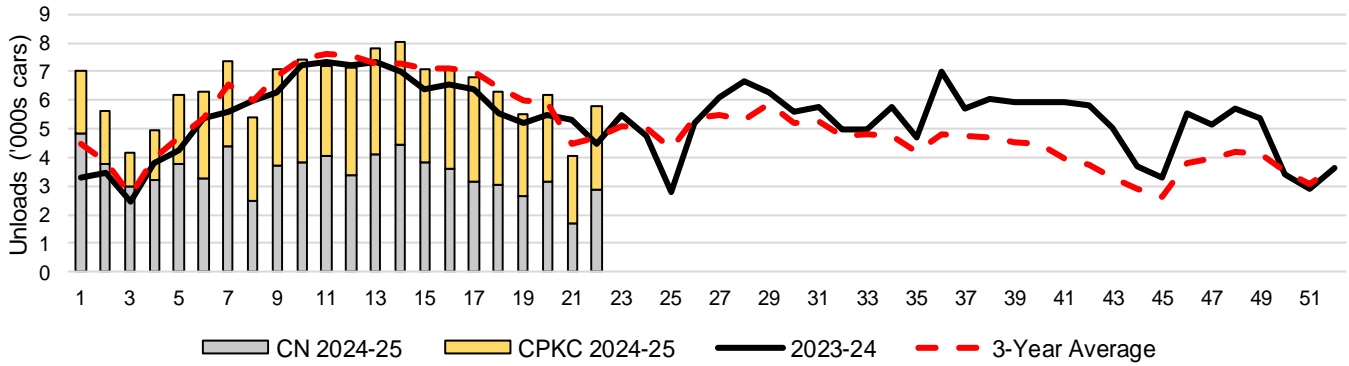
  

YTD Unloads ('000 tonnes)	Vancouver	Prince Rupert	West Coast	Thunder Bay	Churchill	Total
2024-25	13,340.1	2,011.3	15,351.4	4,242.3	-	19,593.7
2023-24	11,787.8	984.8	12,772.6	3,881.9	-	16,654.5
3-Yr Avg.	12,535.1	1,632.2	14,167.2	3,931.5	-	18,098.7
Var % to Last Year	13%	104%	20%	9%	n/a	18%
Var % to 3-Yr Avg.	6%	23%	8%	8%	n/a	8%

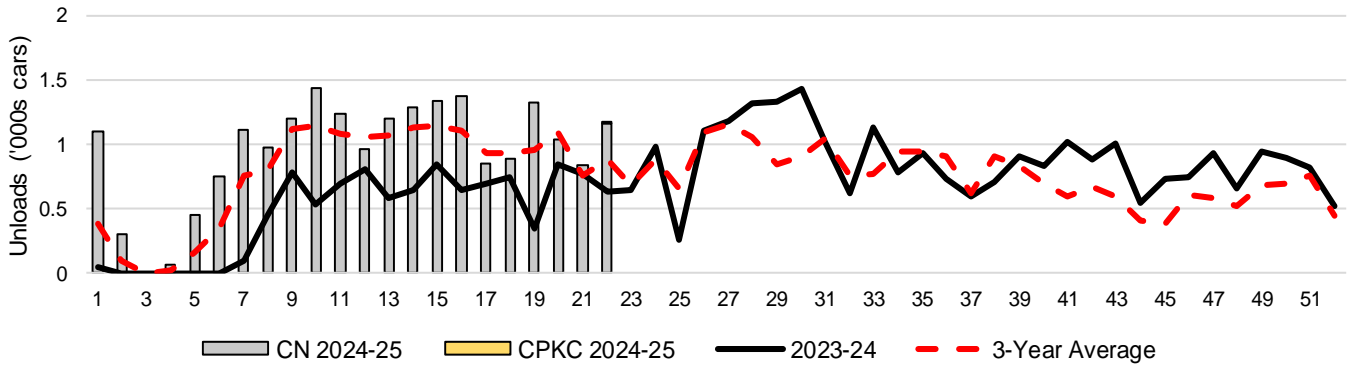
3-C Western Port Terminal Unloads (cars), Total by Carrier, This Year vs. Last Year and the 3-Year Average



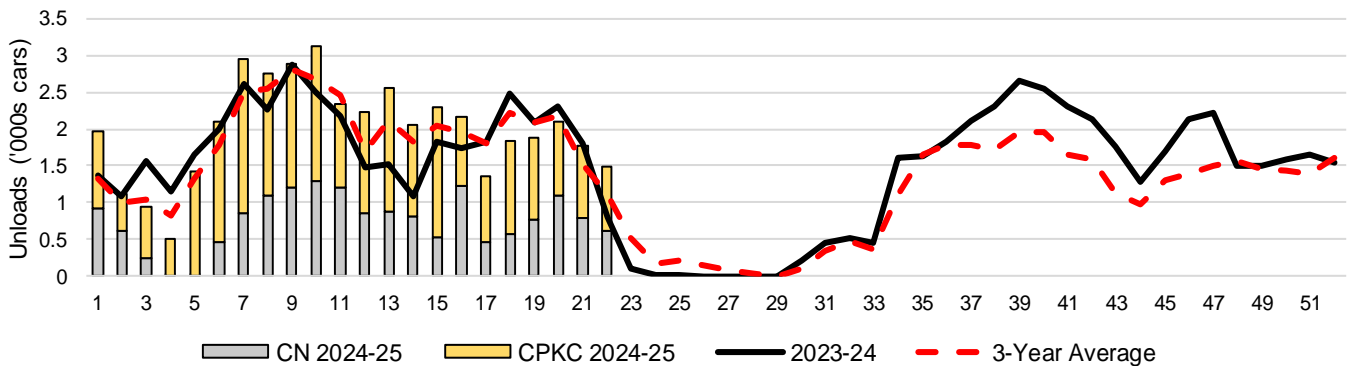
### 3-D Vancouver Terminal Unloads (cars), Total by Carrier, This Year vs. Last Year and the 3-Year Average



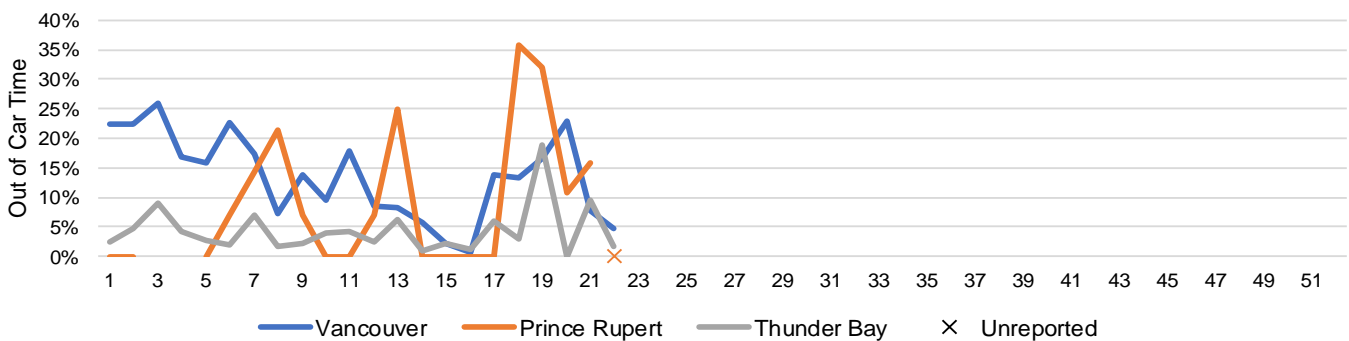
### 3-E Prince Rupert Terminal Unloads (cars), Total by Carrier, This Year vs. Last Year and the 3-Year Average



### 3-F Thunder Bay Terminal Unloads (cars), Total by Carrier, This Year vs. Last Year and the 3-Year Average



### 3-G Weekly Out-of-Car Time (% of hours out-of-cars / total hours working)



Out-of-car time is measured weekly and uses data from terminal elevators on the total number of hours the facilities are open & staffed (including overtime hours) and the corresponding number of hours that terminals have no railcars available to unload. The measure is expressed as a percentage (hours without cars to the total number of hours working).

### 3-H Monthly Unloads (cars) – This Year vs. Last Year and the 3-Year Average to Week 21 2024-25

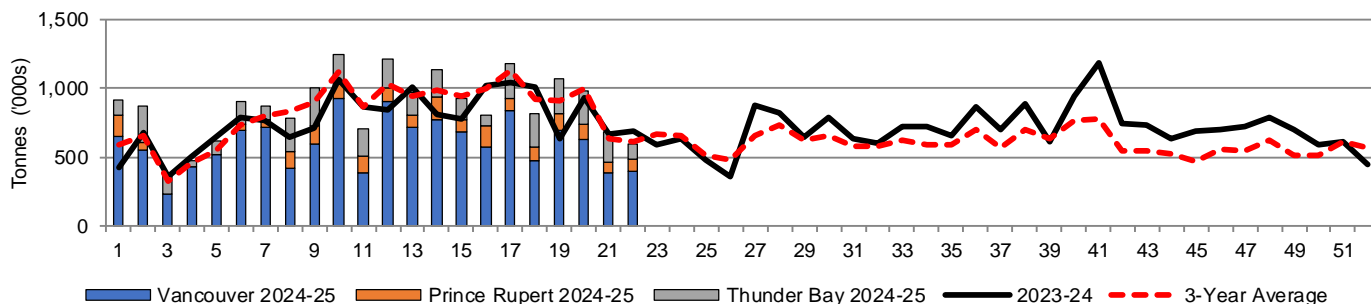
Months	Aug	Sep	Oct	Nov	Dec	Jan	Feb	Mar	Apr	May	Jun	Jul
Weeks	1-4	5-8	9-13	14-17	18-21	22-26	27-30	31-34	35-39	40-43	44-47	48-52
2024-25	27,783	37,717	55,870	41,798	33,698	-	-	-	-	-	-	-
2023-24	18,158	30,245	49,223	35,668	32,949	27,216	30,125	28,067	43,763	35,188	27,940	34,740
3-Yr Avg.	19,641	32,831	53,921	40,398	34,537	29,506	26,039	25,346	36,061	24,354	20,425	29,824
Var % to Last Year	53%	25%	14%	17%	2%							
Var % to 3-Yr Avg.	41%	15%	4%	3%	-2%							

## 4. Shipments

### 4-A Shipments from Port Terminals ('000 tonnes) – This Year-to-Date as of Week 22 and Variance to Last Year-to-Date

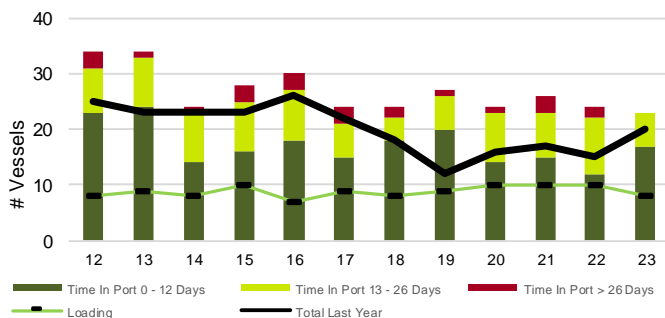
	Vancouver	Prince Rupert	West Coast	Thunder Bay	Churchill	Total
2024-25	13,154.1	2,002.0	15,156.1	3,962.3	-	19,118.4
2023-24	12,391.8	900.4	13,292.2	3,564.5	-	16,856.7
3-Yr Avg.	12,659.5	1,591.2	14,250.7	3,684.1	-	17,934.8
Var % to Last Year	6%	122%	14%	11%	n/a	13%
Var % to 3-Yr Avg.	4%	26%	6%	8%	n/a	7%

### 4-B Weekly Shipments ('000 tonnes) from Port Terminals – This Year vs Last Year and the 3-Year Average

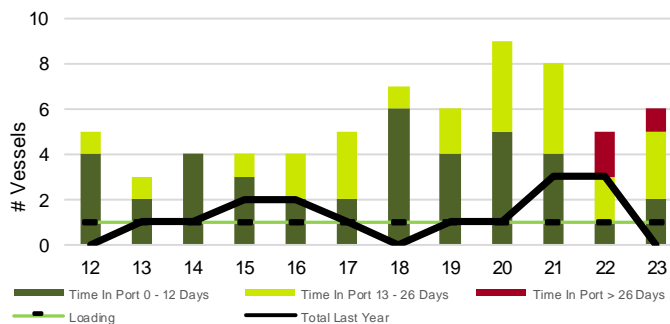


## 5. Vessels

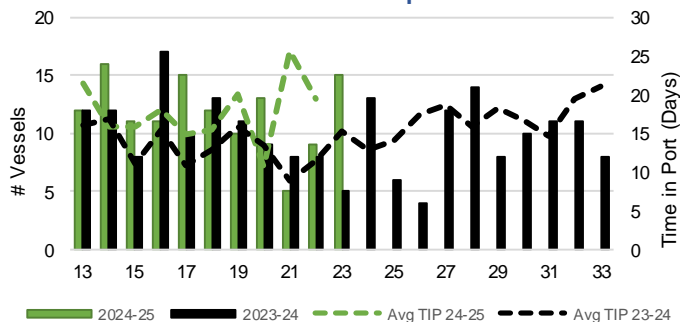
### 5-A Vessel Lineup at Vancouver as of Week 23 2024-25



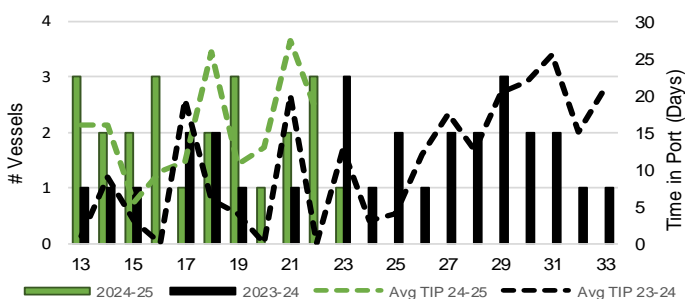
### 5-C Vessel Lineup at Prince Rupert as of Week 23 2024-25



### 5-B Vessels Cleared at Vancouver up to Week 23 2024-25



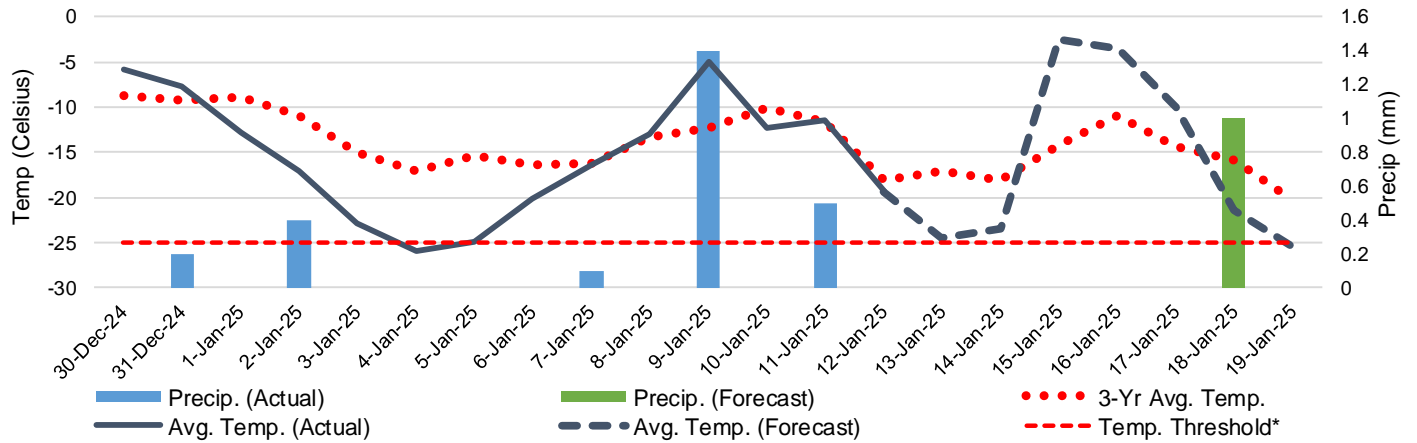
### 5-D Vessels Cleared at Prince Rupert up to Week 23 2024-25



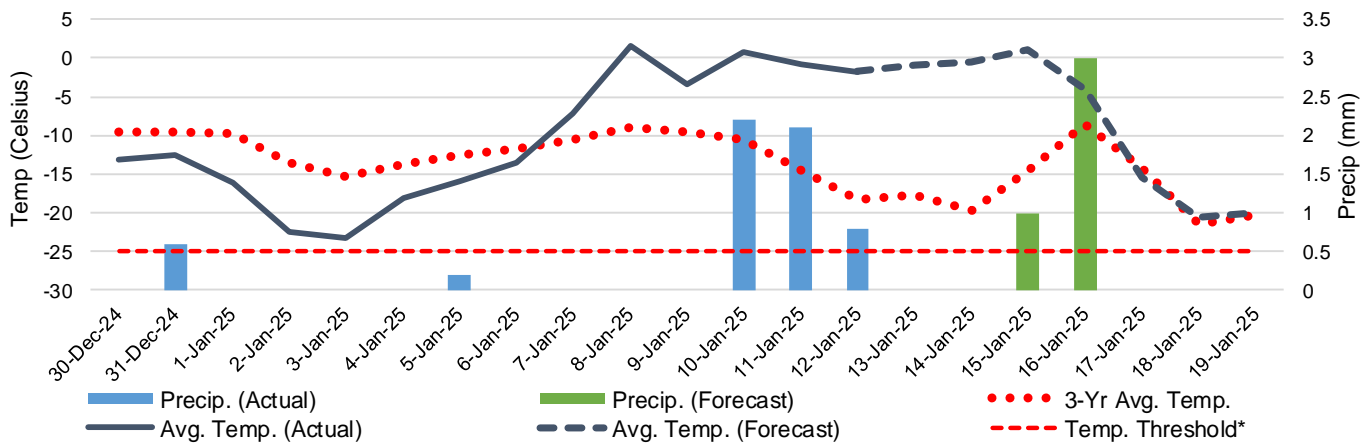
Note: The 'Time in Port' measure for 6-A and 6-C is calculated as how long each vessel in the lineup has been in port as at Sunday 23:59 of that grain week. The 'Avg Time in Port (TIP)' measure for 6-B and 6-D is the average number of days that all vessels which cleared that week were in port. These measures use vessel data provided by the BC Chamber of Shipping and Pacific Pilotage Authority.

# 6. Weather

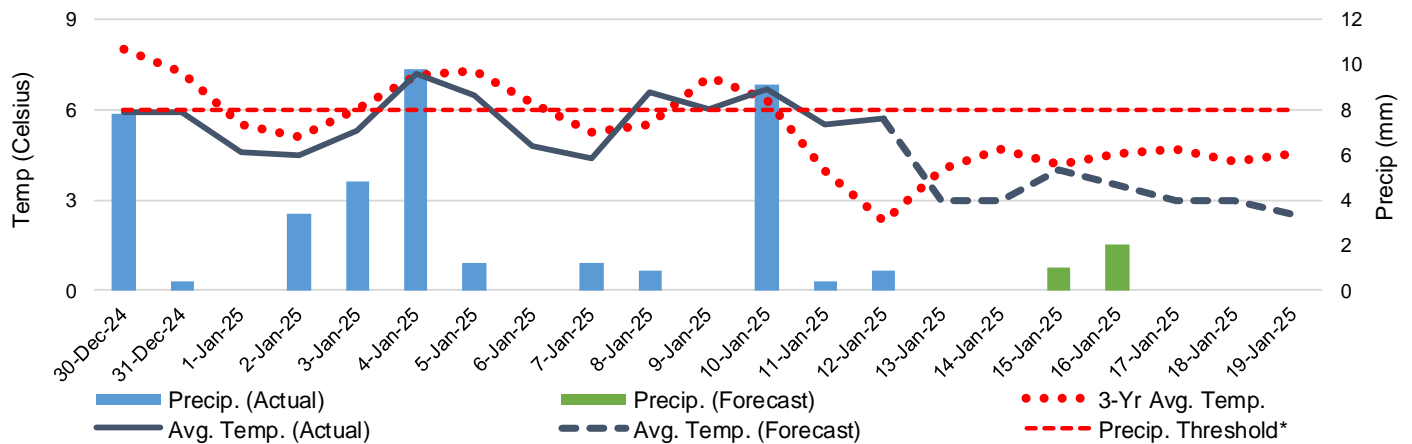
6-A Actual and Forecasted Weather at Winnipeg up to Week 24 2024-25



6-B Actual and Forecasted Weather at Edmonton up to Week 24 2024-25



6-C Actual and Forecasted Weather at Vancouver up to Week 24 2024-25



\*Note: Precip Threshold refers to 8mm of rain. At this level of precipitation, vessel loading may be delayed. The duration of the delay will be dependent on the ship, the duration of rainfall, and the amount of precipitation. 8mm is a general guideline and is not meant to be a definitive limit.  
Source: Environment and Climate Change Canada, The Weather Network (Forecast)