

# Grain Monitoring Program

## Weekly Performance Update

January 21, 2025

For Grain Week 23 2024-25 CY  
January 06, 2024 to January 12, 2025

### Summary

	Week 23	Week 22	Var. from Last Year	
<b>1. Stocks in Store ('000 tonnes)</b>				
Country Elevators	↑ 3,500.6	3,097.1	-1%	
% of Working Capacity	66%	58%		
Terminal Elevators	↓ 1,113.0	1,185.1	-16%	
% of Working Capacity	58%	62%		
<b>2. Country Deliveries ('000 tonnes)</b>				
Country Deliveries	↑ 1,382.6	587.7	93%	
<b>3. Port Performance (Cars)</b>				
Vancouver Unloads	↑ 6,742	5,814	23%	
Prince Rupert Unloads	↑ 1,254	1,164	96%	
Churchill Unloads	— 0	0	n/a	
Thunder Bay Unloads	↓ 562	1,489	518%	
Total Weekly Unloads	↑ 8,558	8,467	38%	
4-Week Rolling Average	↓ 8,249	8,288	15%	
Var. to 4-Week Rolling Average	4%	2%		
YTD Unloads	213,892	205,334	20%	
Weekly Out-of-Car Time	↑ 18.2%	3.9%	48.0%	
<b>4. Terminal Shipments Year-to-Date ('000 tonnes)</b>				
Vancouver	↑ 13,880.1	13,154.1	8%	
Prince Rupert	↑ 2,138.4	2,002.0	117%	
Churchill	— 0.0	0.0	n/a	
Thunder Bay	↑ 4,035.4	3,962.3	11%	
Total Western Canada	↑ 20,053.9	19,118.4	15%	
<b>5. Vessels as at Jan 19, 2025</b>				
	Week 24	Week 23	Var. from Last Year	
Vancouver	Vessel Lineup in port	↑ 30	23	67%
	Vessels Cleared	↓ 10	15	-23%
	Vessels Arrived	↑ 17	14	55%
Pr. Rupert	Vessel Lineup in port	↓ 5	6	67%
	Vessels Cleared	↑ 2	1	100%
	Vessels Arrived	↓ 1	2	-75%
<b>Vessels Inbound Jan 20, 2025 to Jan 26, 2025 (Week 25)</b>				
Vancouver	8			
Prince Rupert	4			
<b>6. Weather</b>				
	Week 23 Actual	Week 24 Actual	Week 25 Forecast	
Winnipeg Days < -25°C	0	2	1	
Edmonton Days < -25°C	0	1	0	
Vancouver Days Precip > 8mm	1	0	0	

### 1. Stocks in Store: (Page 2)

- Country stocks increased to 3.5 MMT in Week 23 utilizing 66% of the system's working capacity. Space in primary elevators is good.
- Total western port terminal stocks decreased to 1.1 MMT in Week 23, utilizing 58% of the working capacity.

### 2. Country Deliveries: (Page 3)

- Deliveries to primary elevators were 1.38 MMT in Week 23.

### 3. Port Performance: (Pages 3-5)

- Total western port unloads were 4% higher than the 4-week moving average and 38% higher than Week 23 last year.
- West Coast unloads were 7,996 cars (Vancouver 6,742 and Prince Rupert 1,254), 18% higher than the 4-week moving average and 31% higher than Week 23 last year.
- Thunder Bay unloads were 562 cars, 62% lower than the 4-week moving average and 518% higher than Week 23 last year.
- The total average terminal out-of-car time (OCT) increased to 18.2% from 3.9% the previous week. The OCT for Week 23 was 18.0% at Vancouver and 18.8% at Thunder Bay. At the time of publishing, Prince Rupert had not yet reported Week 23 OCT.

### 4. Shipments: (Page 5)

- Year-to-date Western Canadian shipments from port terminal elevators at Week 23 are 15% higher than the same period last year and 7% higher than the 3-year average.
- The Great Lakes – St. Lawrence Seaway System closing of navigation dates, with case-by-case permissions for final clearance, are as follows:
  - Montreal – Lake Ontario Section: Dec 24 (clear by Jan 05)
  - Welland Canal: Dec 26 (clear by Jan 10)
  - Sault St. Marie Locks and Canal: Jan 15

### 5. Vessels: (Page 5)

- Vancouver vessel lineup for Week 24 2024-25 increased to 30 vessels (The current one-year average at Vancouver is 23 vessels). Of the 30, 10 were at berth, 10 were anchored at English Bay, 3 were anchored at Burrard Inlet, and 7 were anchored at Vancouver Island.
- Prince Rupert vessel lineup for Week 24 2024-25 decreased to 5 vessels (The current one-year average at Prince Rupert is 4 vessels).
- Vessels cleared from Vancouver was 10 and from Prince Rupert was 2 in Week 24 2024-25.

### 6. Weather: (Page 6)

- Temperatures across the prairies are forecasted to drop below -25C regionally. Railways may invoke their winter operating plans where required.

# 1. Stocks in Store

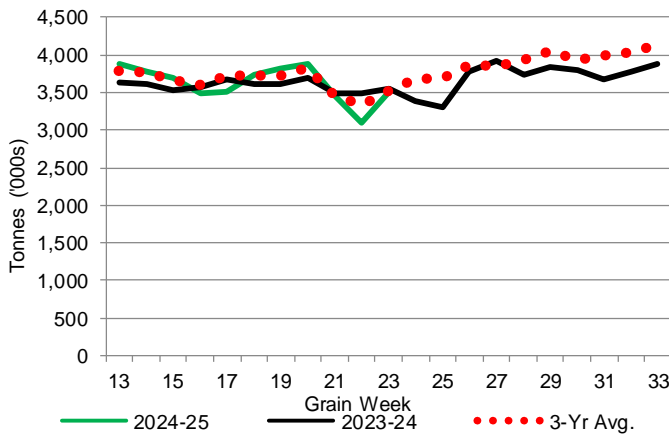
1-A1 Country Stocks ('000 tonnes) – Week 23

	MB	SK	AB	BC	Total
2024-25	681.1	1,779.4	1,024.6	15.5	3,500.6
2023-24	714.9	1,675.4	1,130.6	20.7	3,541.6
3-Yr Avg.	679.2	1,743.3	1,077.8	19.0	3,519.3
Var % - LY	-5%	6%	-9%	-25%	-1%
Var % 3-Yr Avg.	0%	2%	-5%	-18%	-1%
Storage Capacity	1,622.4	4,000.1	2,508.3	32.1	8,162.9
Estimated Working Capacity	1,054.6	2,600.0	1,630.4	20.9	5,305.9
24-25 % of Wkg Cap	65%	68%	63%	74%	66%

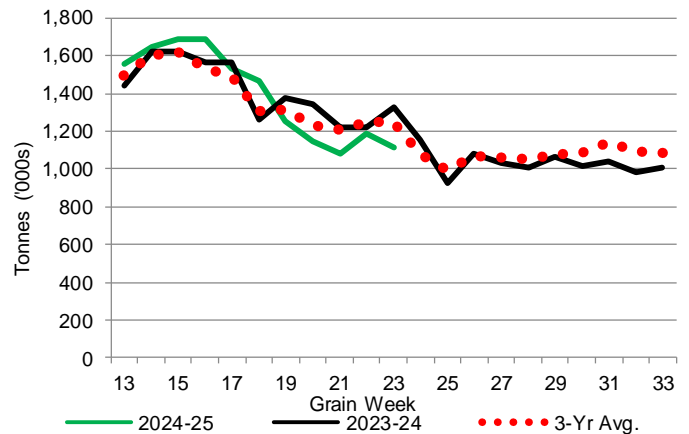
1-B1 Terminal Stocks ('000 tonnes) – Week 23

	VC	PR	West Coast	CH	TB	Total
2024-25	685.1	103.5	788.6	0.7	323.7	1,113.0
2023-24	865.5	176.8	1,042.3	0.7	282.9	1,325.9
3-Yr Avg.	798.3	143.5	941.8	0.7	302.2	1,244.8
Var % - LY	-21%	-41%	-24%	0%	14%	-16%
Var % 3-Yr Avg.	-14%	-28%	-16%	0%	7%	-11%
Storage Capacity	1,275.5	209.5	1,485.0	140.0	1,127.5	2,752.5
Estimated Working Capacity	892.9	146.7	1,039.6	98.0	789.2	1,926.8
24-25 % of Wkg Cap	77%	71%	76%	1%	41%	58%

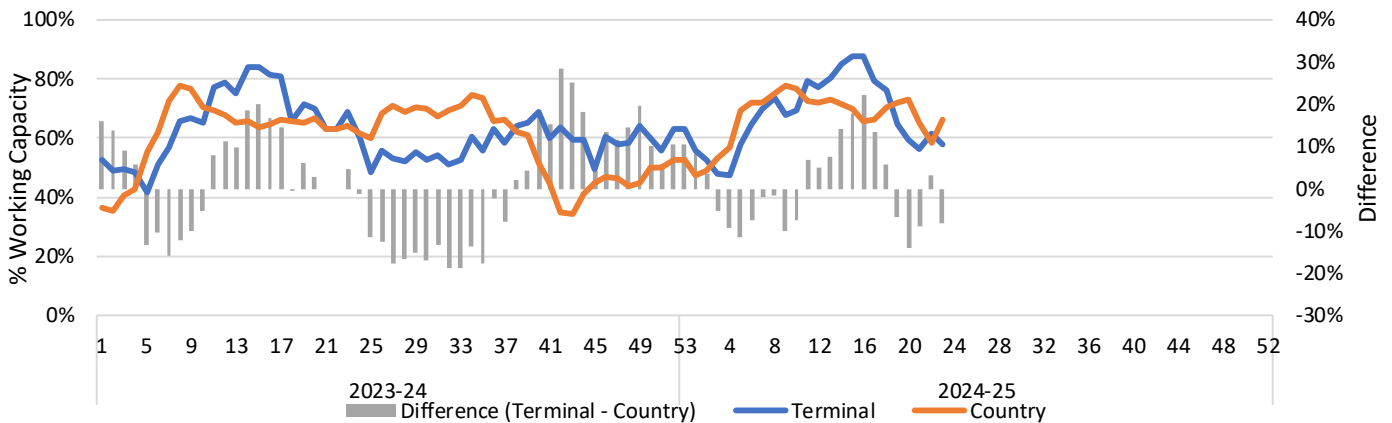
1-A2 Weekly Country Stocks in Store



1-B2 Weekly Terminal Stocks in Store



1-C Weekly Stock Balance

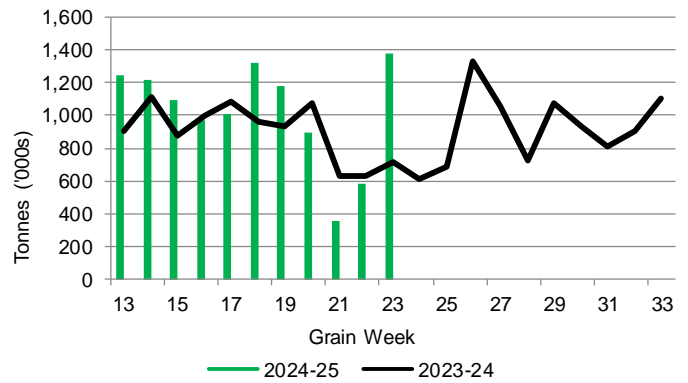


## 2. Country Deliveries

2-A Country Deliveries ('000 tonnes) – Week 23

	MB	SK	AB	BC	Total
2024-25	198.5	739.4	439.4	5.3	1,382.6
2023-24	97.5	370.3	242.3	5.2	715.3
4 Wk Avg	138.3	414.1	248.9	3.9	805.2
Var % to Last Year	104%	100%	81%	2%	93%
Var % To 4 Wk Avg	44%	79%	77%	36%	72%

2-B 2024-25 Weekly Country Deliveries



## 3. Port Performance

3-A Weekly Unloads by Port (Cars) – This Year for Week 23, 4-Week Moving Average and Variances

	Vancouver	Prince Rupert	West Coast	Thunder Bay	Churchill	Total
2024-25	6,742	1,254	7,996	562	-	8,558
2023-24	5,477	640	6,117	91	n/a	6,208
4-Wk Avg.	5,693	1,073	6,766	1,483	-	8,249
Var % to Last Year	23%	96%	31%	518%	n/a	38%
Var % to 4-Wk Avg.	18%	17%	18%	-62%	n/a	4%

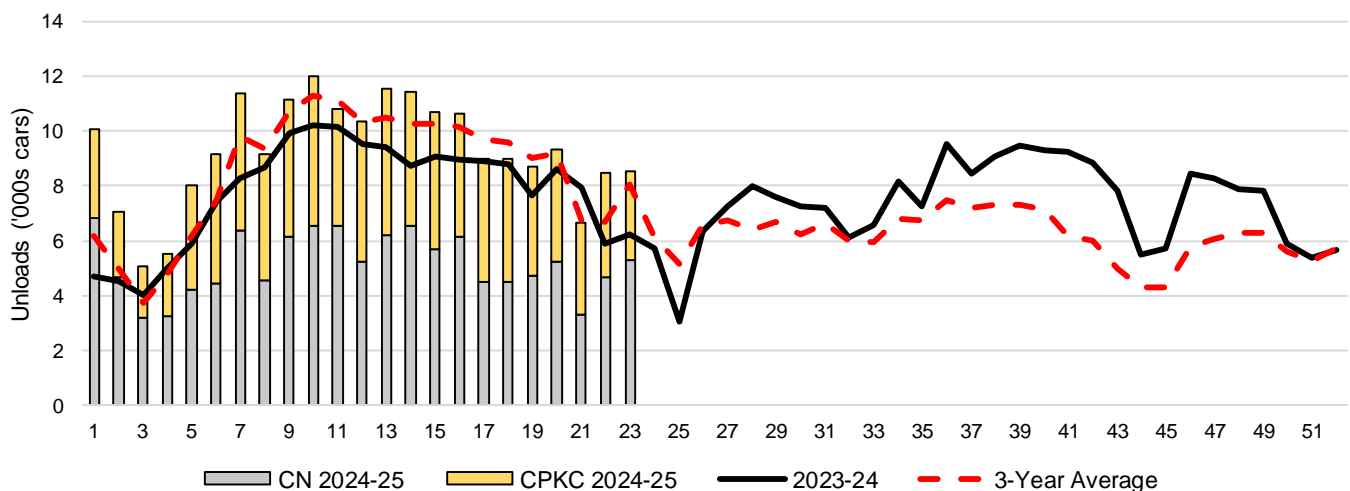
3-B Terminal Unloads by Port – This Year-to-Date as at Week 23 and Variances

YTD Unloads (cars)	Vancouver	Prince Rupert	West Coast	Thunder Bay	Churchill	Total
2024-25	147,283	22,155	169,438	44,454	-	213,892
2023-24	127,288	10,748	138,036	40,283	-	178,319
3-Yr Avg	136,868	17,970	154,838	41,275	-	196,113
Var % to Last Year	16%	106%	23%	10%	n/a	20%
Var % to 3-Yr Avg	8%	23%	9%	8%	n/a	9%

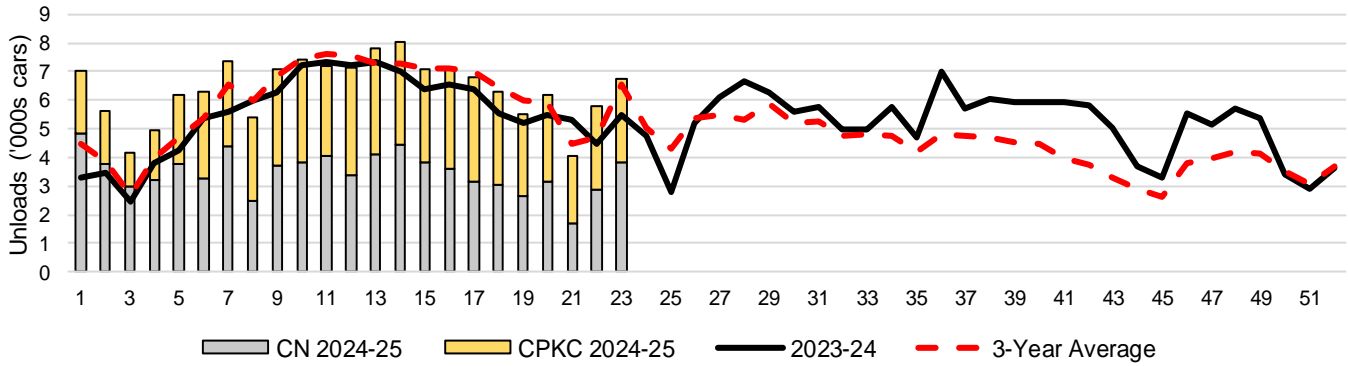
  

YTD Unloads ('000 tonnes)	Vancouver	Prince Rupert	West Coast	Thunder Bay	Churchill	Total
2024-25	13,984.5	2,133.7	16,118.2	4,296.7	-	20,414.9
2023-24	12,317.6	1,046.9	13,364.5	3,890.3	-	17,254.8
3-Yr Avg.	13,166.3	1,731.9	14,898.2	3,977.6	-	18,875.7
Var % to Last Year	14%	104%	21%	10%	n/a	18%
Var % to 3-Yr Avg.	6%	23%	8%	8%	n/a	8%

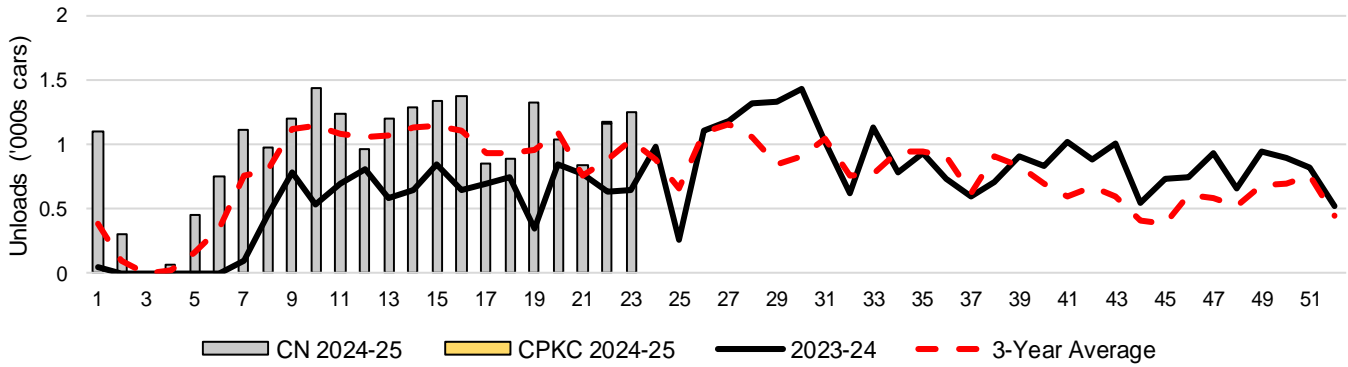
3-C Western Port Terminal Unloads (cars), Total by Carrier, This Year vs. Last Year and the 3-Year Average



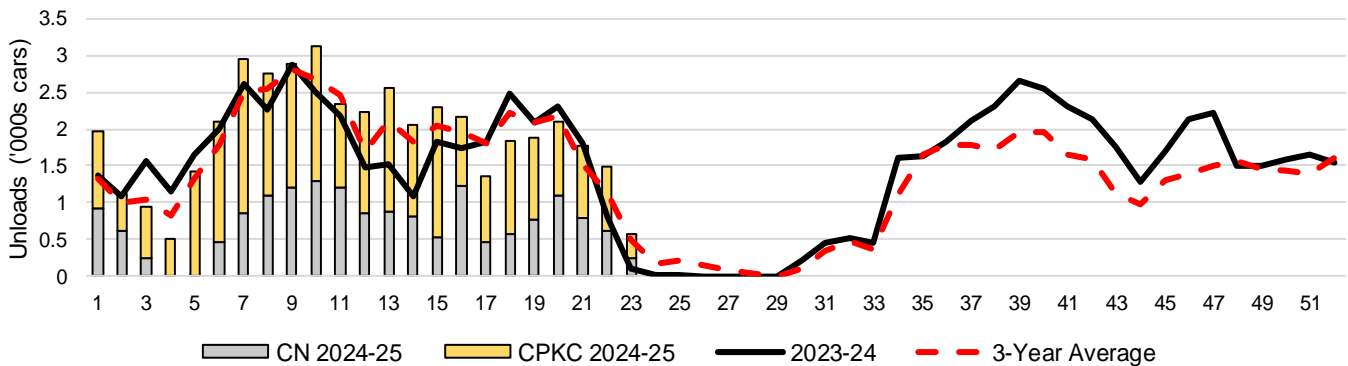
### 3-D Vancouver Terminal Unloads (cars), Total by Carrier, This Year vs. Last Year and the 3-Year Average



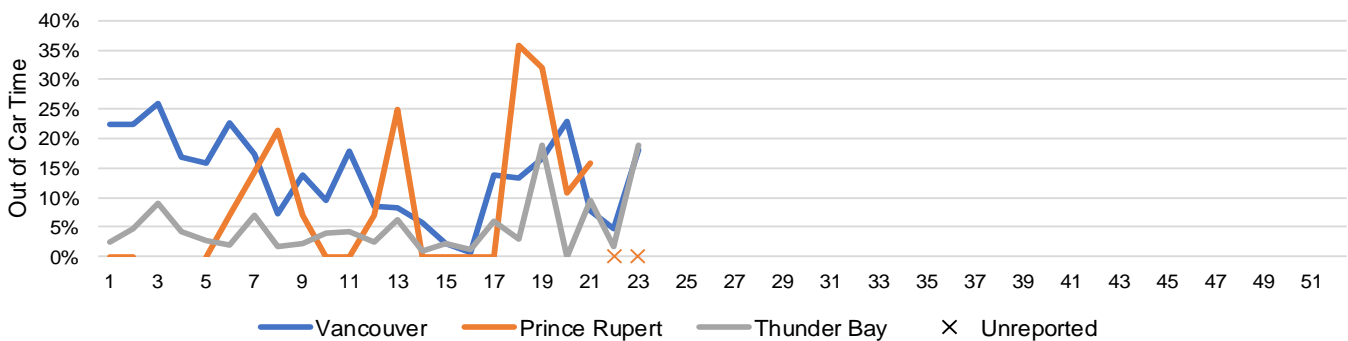
### 3-E Prince Rupert Terminal Unloads (cars), Total by Carrier, This Year vs. Last Year and the 3-Year Average



### 3-F Thunder Bay Terminal Unloads (cars), Total by Carrier, This Year vs. Last Year and the 3-Year Average



### 3-G Weekly Out-of-Car Time (% of hours out-of-cars / total hours working)



Out-of-car time is measured weekly and uses data from terminal elevators on the total number of hours the facilities are open & staffed (including overtime hours) and the corresponding number of hours that terminals have no railcars available to unload. The measure is expressed as a percentage (hours without cars to the total number of hours working).

### 3-H Monthly Unloads (cars) – This Year vs. Last Year and the 3-Year Average to Week 21 2024-25

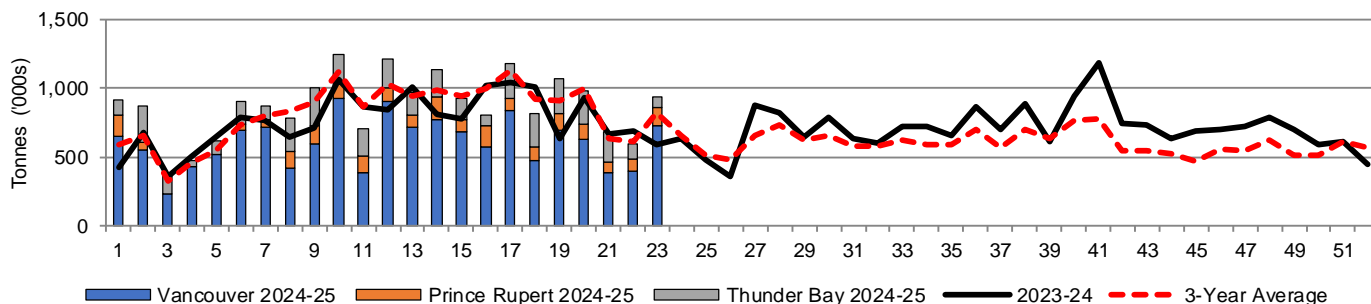
Months	Aug	Sep	Oct	Nov	Dec	Jan	Feb	Mar	Apr	May	Jun	Jul
Weeks	1-4	5-8	9-13	14-17	18-21	22-26	27-30	31-34	35-39	40-43	44-47	48-52
2024-25	27,783	37,718	55,870	41,798	33,698	-	-	-	-	-	-	-
2023-24	18,158	30,245	49,223	35,668	32,949	27,216	30,125	28,067	43,763	35,188	27,940	34,740
3-Yr Avg.	19,641	32,831	53,921	40,398	34,537	29,506	26,039	25,346	36,061	24,354	20,425	29,824
Var % to Last Year	53%	25%	14%	17%	2%							
Var % to 3-Yr Avg.	41%	15%	4%	3%	-2%							

## 4. Shipments

### 4-A Shipments from Port Terminals ('000 tonnes) – This Year-to-Date as of Week 23 and Variance to Last Year-to-Date

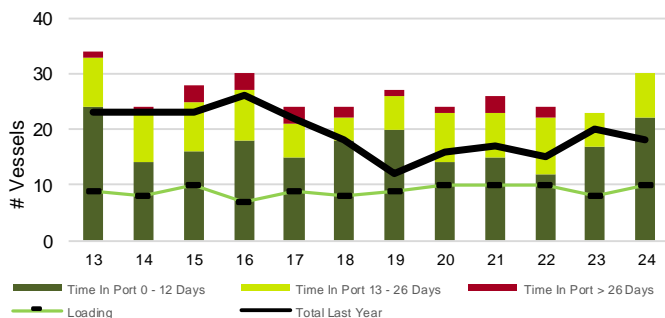
	Vancouver	Prince Rupert	West Coast	Thunder Bay	Churchill	Total
2024-25	13,880.1	2,138.4	16,018.5	4,035.4	-	20,053.9
2023-24	12,806.5	987.8	13,794.3	3,649.8	-	17,444.1
3-Yr Avg.	13,277.4	1,687.8	14,965.2	3,787.2	-	18,752.4
Var % to Last Year	8%	116%	16%	11%	n/a	15%
Var % to 3-Yr Avg.	5%	27%	7%	7%	n/a	7%

### 4-B Weekly Shipments ('000 tonnes) from Port Terminals – This Year vs Last Year and the 3-Year Average

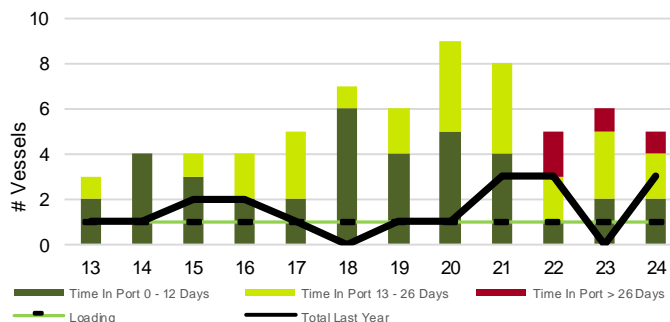


## 5. Vessels

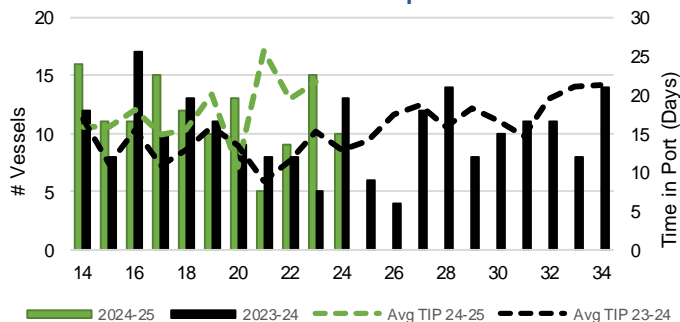
### 5-A Vessel Lineup at Vancouver as of Week 24 2024-25



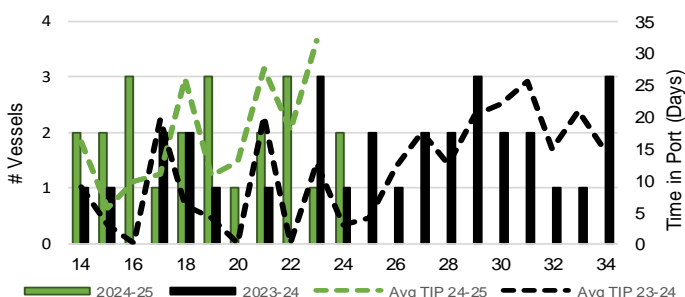
### 5-C Vessel Lineup at Prince Rupert as of Week 24 2024-25



### 5-B Vessels Cleared at Vancouver up to Week 24 2024-25



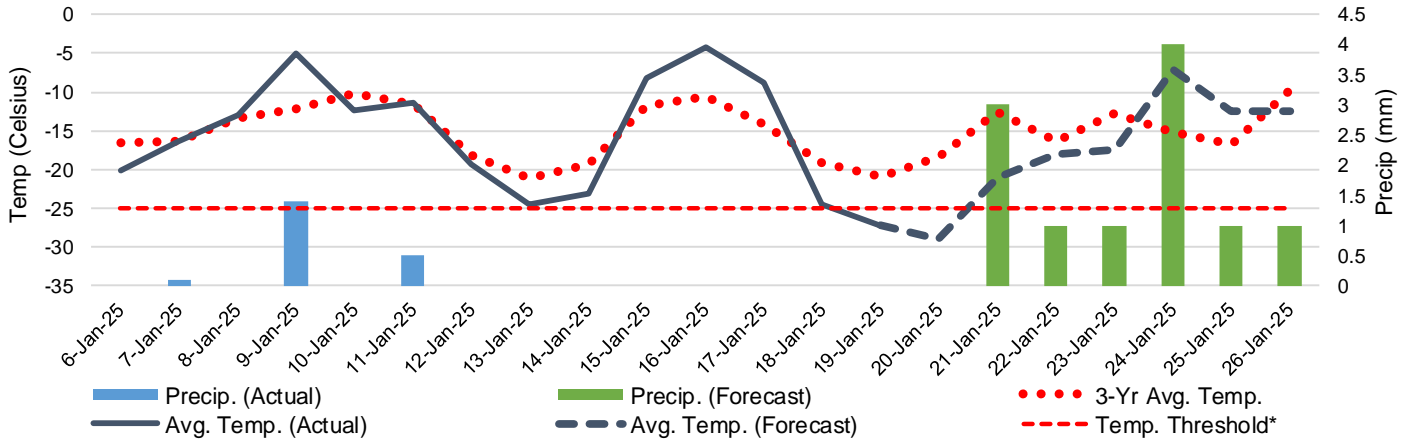
### 5-D Vessels Cleared at Prince Rupert up to Week 24 2024-25



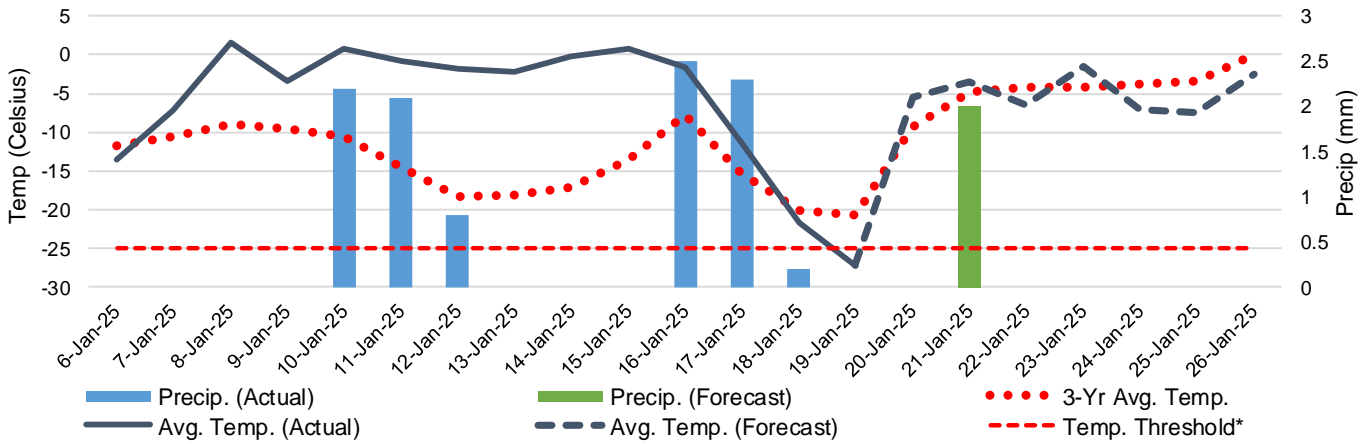
Note: The 'Time in Port' measure for 6-A and 6-C is calculated as how long each vessel in the lineup has been in port as at Sunday 23:59 of that grain week. The 'Avg Time in Port (TIP)' measure for 6-B and 6-D is the average number of days that all vessels which cleared that week were in port. These measures use vessel data provided by the BC Chamber of Shipping and Pacific Pilotage Authority.

# 6. Weather

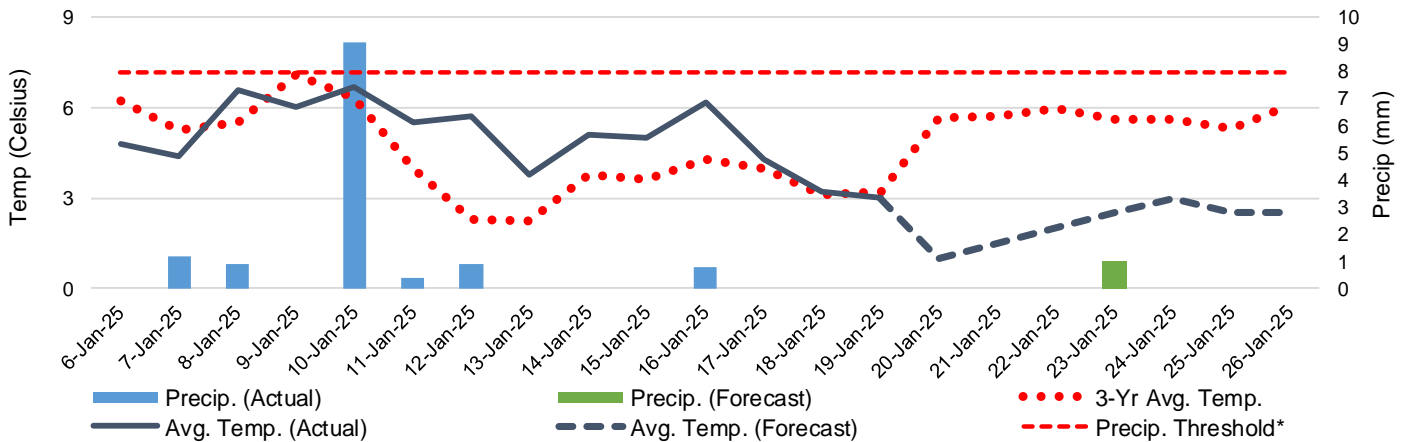
6-A Actual and Forecasted Weather at Winnipeg up to Week 25 2024-25



6-B Actual and Forecasted Weather at Edmonton up to Week 25 2024-25



6-C Actual and Forecasted Weather at Vancouver up to Week 25 2024-25



\*Note: Precip Threshold refers to 8mm of rain. At this level of precipitation, vessel loading may be delayed. The duration of the delay will be dependent on the ship, the duration of rainfall, and the amount of precipitation. 8mm is a general guideline and is not meant to be a definitive limit.  
Source: Environment and Climate Change Canada, The Weather Network (Forecast)