

# Grain Monitoring Program

## Weekly Performance Update

January 28, 2025

For Grain Week 24 2024-25 CY  
January 13, 2024 to January 19, 2025

### Summary

	Week 24	Week 23	Var. from Last Year	
<b>1. Stocks in Store ('000 tonnes)</b>				
Country Elevators	↑ 3,625.2	3,500.6	7%	
% of Working Capacity	68%	66%		
Terminal Elevators	↑ 1,158.0	1,113.0	0%	
% of Working Capacity	60%	58%		
<b>2. Country Deliveries ('000 tonnes)</b>				
Country Deliveries	↓ 1,169.7	1,382.6	92%	
<b>3. Port Performance (Cars)</b>				
Vancouver Unloads	↓ 6,023	6,742	27%	
Prince Rupert Unloads	↓ 1,093	1,254	12%	
Churchill Unloads	— 0	0	n/a	
Thunder Bay Unloads	↓ 322	843	2827%	
Total Weekly Unloads	↓ 7,438	8,839	30%	
4-Week Rolling Average	↓ 7,852	8,319	22%	
Var. to 4-Week Rolling Average	-5%	6%		
YTD Unloads	221,611	214,173	20%	
Weekly Out-of-Car Time	↓ 15.0%	18.2%	-35.6%	
<b>4. Terminal Shipments Year-to-Date ('000 tonnes)</b>				
Vancouver	↑ 14,491.0	13,919.8	9%	
Prince Rupert	↑ 2,260.2	2,138.4	114%	
Churchill	— 0.0	0.0	n/a	
Thunder Bay	↑ 4,044.5	4,035.4	9%	
Total Western Canada	↑ 20,795.7	20,093.6	15%	
<b>5. Vessels as at Jan 26, 2025</b>				
	Week 25	Week 24	Var. from Last Year	
Vancouver	Vessel Lineup in port	↓ 25	31	19%
	Vessels Cleared	↑ 11	10	83%
	Vessels Arrived	↓ 5	17	-44%
P.R. Rupert	Vessel Lineup in port	↑ 6	5	20%
	Vessels Cleared	— 2	2	0%
	Vessels Arrived	↑ 3	1	-25%
<b>Vessels Inbound Jan 27, 2025 to Feb 02, 2025 (Week 26)</b>				
Vancouver	15			
Prince Rupert	4			
<b>6. Weather</b>				
	Week 24 Actual	Week 25 Actual	Week 26 Forecast	
Winnipeg Days < -25°C	2	1	0	
Edmonton Days < -25°C	1	0	1	
Vancouver Days Precip > 8mm	0	0	3	

### 1. Stocks in Store: (Page 2)

- Country stocks increased to 3.6 MMT in Week 24 utilizing 68% of the system's working capacity. Space in primary elevators is good.
- Total western port terminal stocks increased to 1.2 MMT in Week 24, utilizing 60% of the working capacity.

### 2. Country Deliveries: (Page 3)

- Deliveries to primary elevators were 1.17 MMT in Week 24.

### 3. Port Performance: (Pages 3-5)

- Total western port unloads were 5% lower than the 4-week moving average and 30% higher than Week 24 last year.
- West Coast unloads were 7,116 cars (Vancouver 6,023 and Prince Rupert 1,093), 6% higher than the 4-week moving average and 24% higher than Week 24 last year.
- Thunder Bay unloads were 322 cars, 71% lower than the 4-week moving average and 2827% higher than Week 24 last year.
- The total average terminal out-of-car time (OCT) decreased to 15.0% from 18.2% the previous week. The OCT for Week 24 was 18.9% at Vancouver and 2.0% at Thunder Bay. At the time of publishing, Prince Rupert had not yet reported Week 24 OCT.

### 4. Shipments: (Page 5)

- Year-to-date Western Canadian shipments from port terminal elevators at Week 24 are 15% higher than the same period last year and 6% higher than the 3-year average.
- The Great Lakes – St. Lawrence Seaway System is closed until March 2025.

### 5. Vessels: (Page 5)

- Vancouver vessel lineup for Week 25 2024-25 decreased to 25 vessels (The current one-year average at Vancouver is 23 vessels). Of the 25, 6 were at berth, 8 were anchored at English Bay, 1 was anchored at Burrard Inlet, and 10 were anchored at Vancouver Island.
- Prince Rupert vessel lineup for Week 25 2024-25 increased to 6 vessels (The current one-year average at Prince Rupert is 4 vessels).
- Vessels cleared from Vancouver was 11 and from Prince Rupert was 2 in Week 25 2024-25.

### 6. Weather: (Page 6)

- Temperatures across the prairies are forecasted to drop below -25C regionally. Railways may invoke their winter operating plans where required.
- Vancouver is forecast to receive high precipitation during Week 26 which may impact the ability to load grain into vessels.

# 1. Stocks in Store

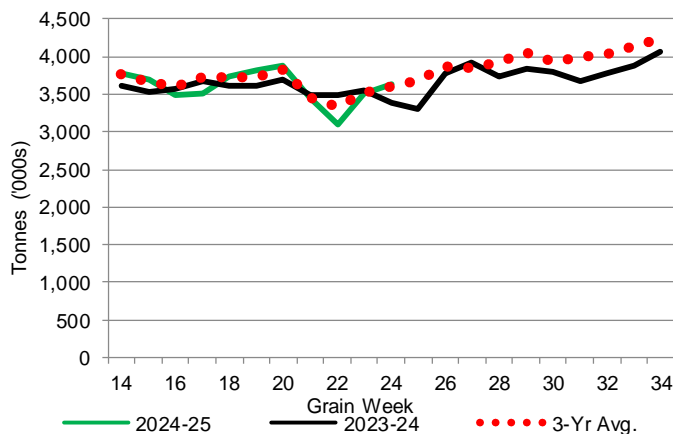
1-A1 Country Stocks ('000 tonnes) – Week 24

	MB	SK	AB	BC	Total
2024-25	738.6	1,788.0	1,084.3	14.3	3,625.2
2023-24	711.0	1,549.4	1,105.1	19.2	3,384.7
3-Yr Avg.	719.2	1,728.6	1,139.2	18.9	3,605.8
Var % - LY	4%	15%	-2%	-26%	7%
Var % 3-Yr Avg.	3%	3%	-5%	-24%	1%
Storage Capacity	1,622.4	4,000.1	2,508.3	32.1	8,162.9
Estimated Working Capacity	1,054.6	2,600.0	1,630.4	20.9	5,305.9
24-25 % of Wkg Cap	70%	69%	67%	68%	68%

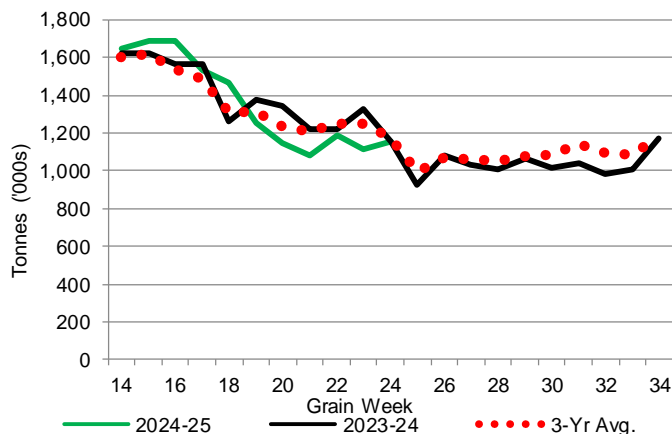
1-B1 Terminal Stocks ('000 tonnes) – Week 24

	VC	PR	West Coast	CH	TB	Total
2024-25	723.2	98.8	822.0	0.7	335.3	1,158.0
2023-24	751.2	159.7	910.9	0.7	242.1	1,153.7
3-Yr Avg.	762.7	137.5	900.2	0.7	273.0	1,173.9
Var % - LY	-4%	-38%	-10%	0%	38%	0%
Var % 3-Yr Avg.	-5%	-28%	-9%	0%	23%	-1%
Storage Capacity	1,275.5	209.5	1,485.0	140.0	1,127.5	2,752.5
Estimated Working Capacity	892.9	146.7	1,039.6	98.0	789.2	1,926.8
24-25 % of Wkg Cap	81%	67%	79%	1%	42%	60%

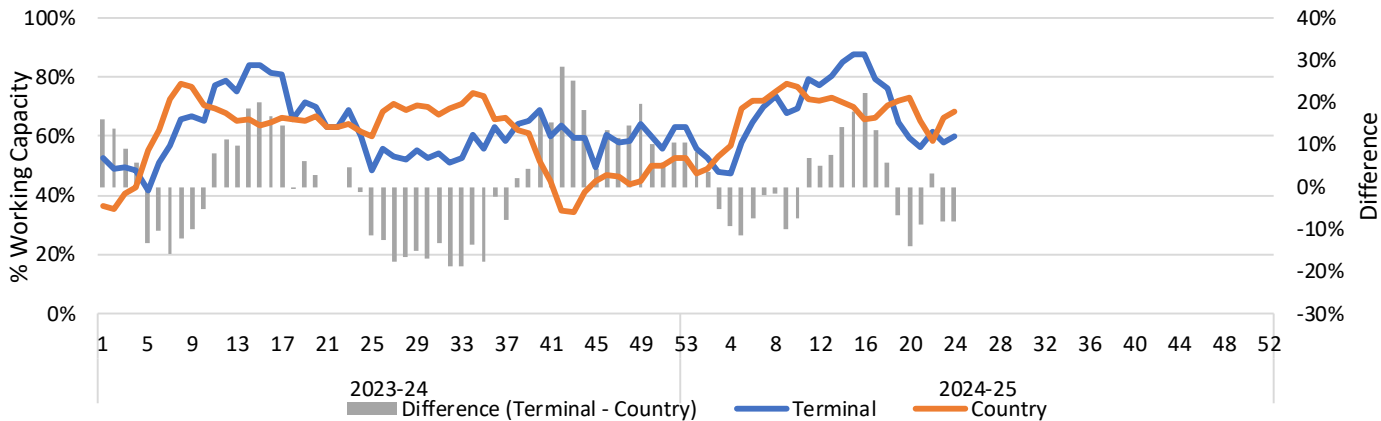
1-A2 Weekly Country Stocks in Store



1-B2 Weekly Terminal Stocks in Store



1-C Weekly Stock Balance

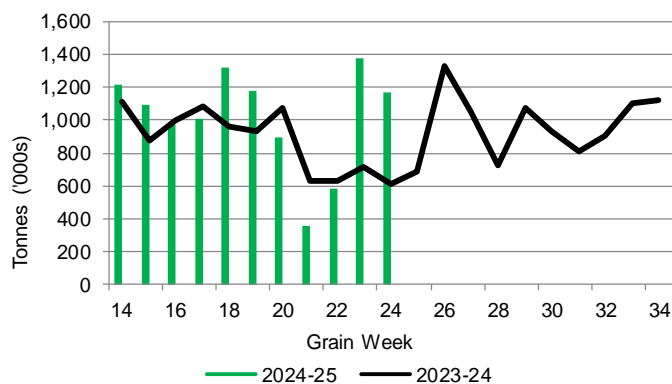


## 2. Country Deliveries

2-A Country Deliveries ('000 tonnes) – Week 24

	MB	SK	AB	BC	Total
2024-25	171.2	603.4	389.3	5.8	1,169.7
2023-24	121.7	317.6	166.8	3.9	610.0
4 Wk Avg	136.1	462.6	271.6	4.4	874.7
Var % to Last Year	41%	90%	133%	49%	92%
Var % To 4 Wk Avg	26%	30%	43%	32%	34%

2-B 2024-25 Weekly Country Deliveries



## 3. Port Performance

3-A Weekly Unloads by Port (Cars) – This Year for Week 24, 4-Week Moving Average and Variances

	Vancouver	Prince Rupert	West Coast	Thunder Bay	Churchill	Total
2024-25	6,023	1,093	7,116	322	-	7,438
2023-24	4,748	977	5,725	11	n/a	5,736
4-Wk Avg.	5,656	1,088	6,743	1,109	-	7,852
Var % to Last Year	27%	12%	24%	2827%	n/a	30%
Var % to 4-Wk Avg.	6%	1%	6%	-71%	n/a	-5%

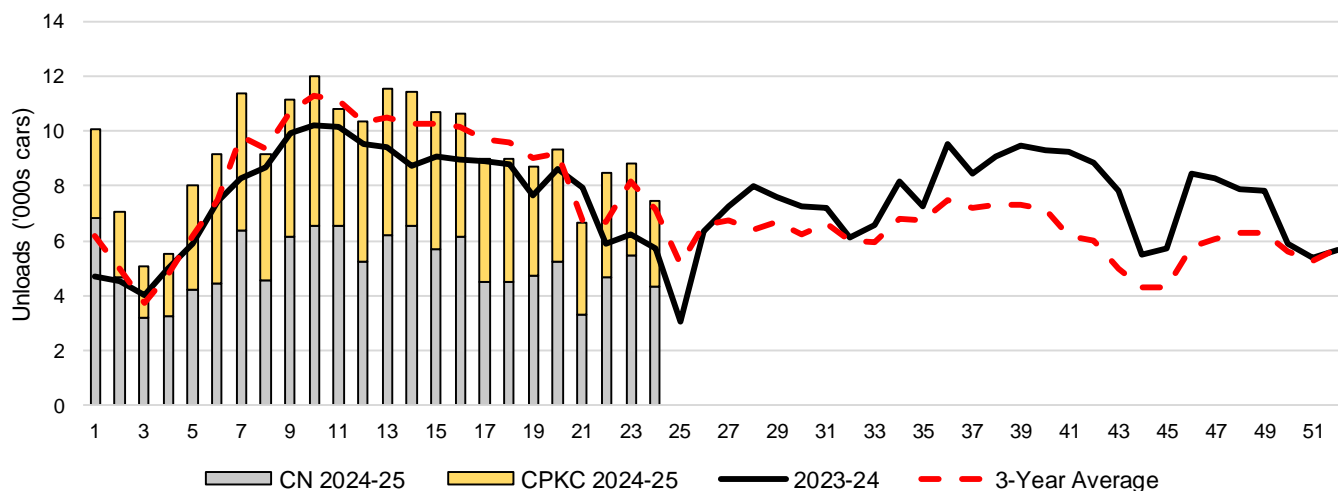
3-B Terminal Unloads by Port – This Year-to-Date as at Week 24 and Variances

YTD Unloads (cars)	Vancouver	Prince Rupert	West Coast	Thunder Bay	Churchill	Total
2024-25	153,306	23,248	176,554	45,057	-	221,611
2023-24	132,036	11,725	143,761	40,294	-	184,055
3-Yr Avg	142,832	19,020	161,851	41,508	-	203,359
Var % to Last Year	16%	98%	23%	12%	n/a	20%
Var % to 3-Yr Avg	7%	22%	9%	9%	n/a	9%

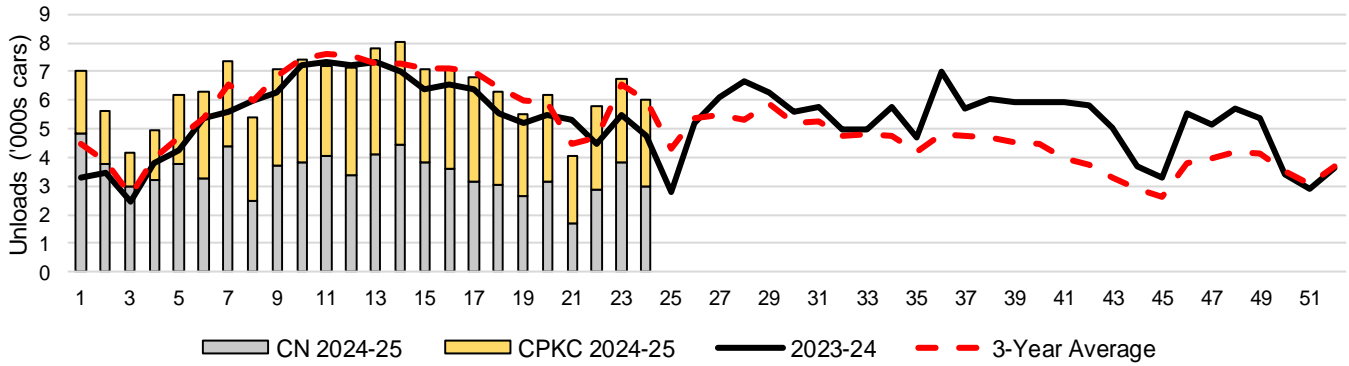
  

YTD Unloads ('000 tonnes)	Vancouver	Prince Rupert	West Coast	Thunder Bay	Churchill	Total
2024-25	14,553.6	2,237.3	16,790.9	4,351.8	-	21,142.7
2023-24	12,776.3	1,142.1	13,918.4	3,890.7	-	17,809.1
3-Yr Avg.	13,737.1	1,833.4	15,570.5	3,998.1	-	19,568.6
Var % to Last Year	14%	96%	21%	12%	n/a	19%
Var % to 3-Yr Avg.	6%	22%	8%	9%	n/a	8%

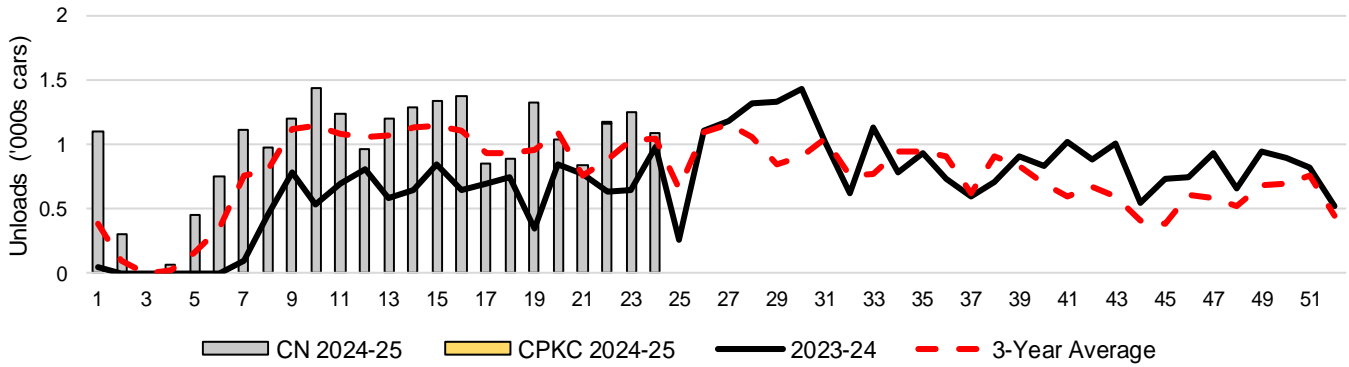
3-C Western Port Terminal Unloads (cars), Total by Carrier, This Year vs. Last Year and the 3-Year Average



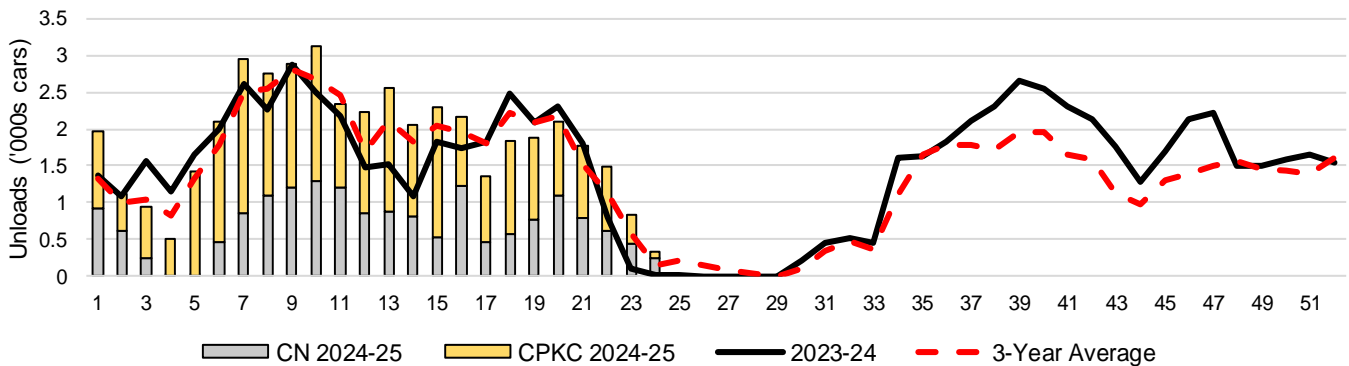
### 3-D Vancouver Terminal Unloads (cars), Total by Carrier, This Year vs. Last Year and the 3-Year Average



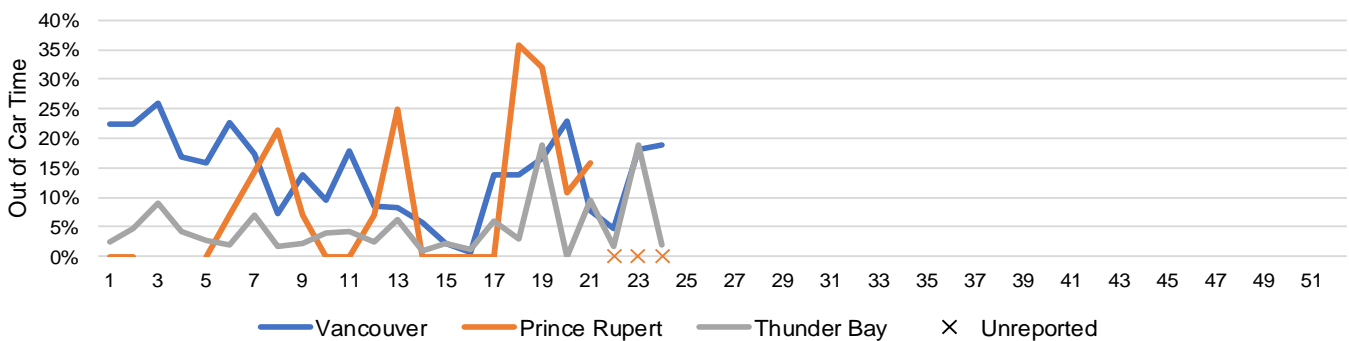
### 3-E Prince Rupert Terminal Unloads (cars), Total by Carrier, This Year vs. Last Year and the 3-Year Average



### 3-F Thunder Bay Terminal Unloads (cars), Total by Carrier, This Year vs. Last Year and the 3-Year Average



### 3-G Weekly Out-of-Car Time (% of hours out-of-cars / total hours working)



Out-of-car time is measured weekly and uses data from terminal elevators on the total number of hours the facilities are open & staffed (including overtime hours) and the corresponding number of hours that terminals have no railcars available to unload. The measure is expressed as a percentage (hours without cars to the total number of hours working).

### 3-H Monthly Unloads (cars) – This Year vs. Last Year and the 3-Year Average to Week 21 2024-25

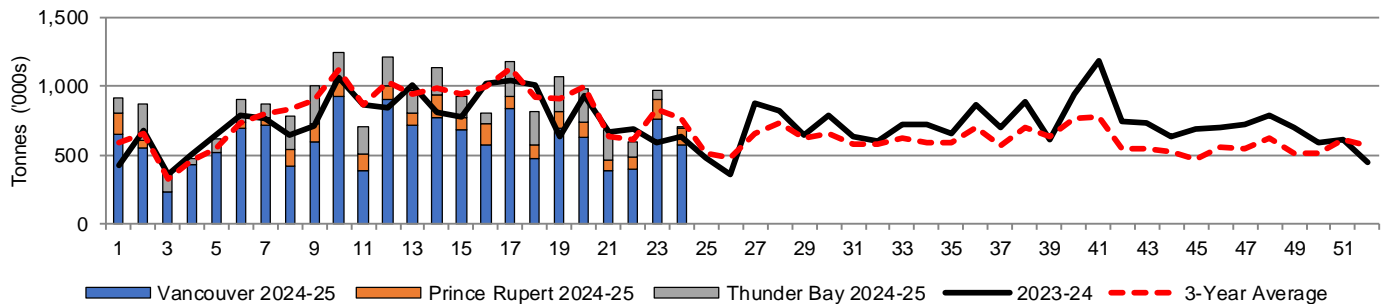
Months	Aug	Sep	Oct	Nov	Dec	Jan	Feb	Mar	Apr	May	Jun	Jul
Weeks	1-4	5-8	9-13	14-17	18-21	22-26	27-30	31-34	35-39	40-43	44-47	48-52
2024-25	27,783	37,718	55,870	41,798	33,698	-	-	-	-	-	-	-
2023-24	18,158	30,245	49,223	35,668	32,949	27,216	30,125	28,067	43,763	35,188	27,940	34,740
3-Yr Avg.	19,641	32,831	53,921	40,398	34,537	29,506	26,039	25,346	36,061	24,354	20,425	29,824
Var % to Last Year	53%	25%	14%	17%	2%							
Var % to 3-Yr Avg.	41%	15%	4%	3%	-2%							

## 4. Shipments

### 4-A Shipments from Port Terminals ('000 tonnes) – This Year-to-Date as of Week 24 and Variance to Last Year-to-Date

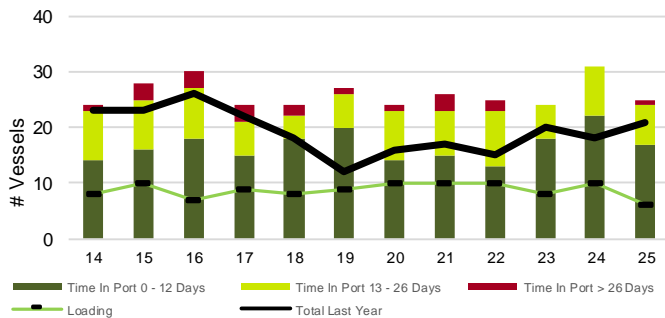
	Vancouver	Prince Rupert	West Coast	Thunder Bay	Churchill	Total
2024-25	14,491.0	2,260.2	16,751.2	4,044.5	-	20,795.7
2023-24	13,308.4	1,055.8	14,364.2	3,711.0	-	18,075.2
3-Yr Avg.	13,922.0	1,780.7	15,702.8	3,832.5	-	19,535.2
Var % to Last Year	9%	114%	17%	9%	n/a	15%
Var % to 3-Yr Avg.	4%	27%	7%	6%	n/a	6%

### 4-B Weekly Shipments ('000 tonnes) from Port Terminals – This Year vs Last Year and the 3-Year Average

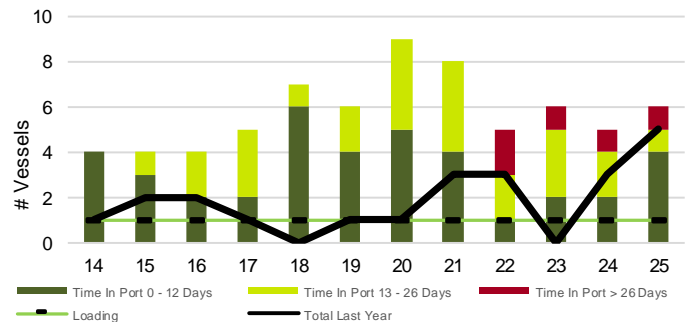


## 5. Vessels

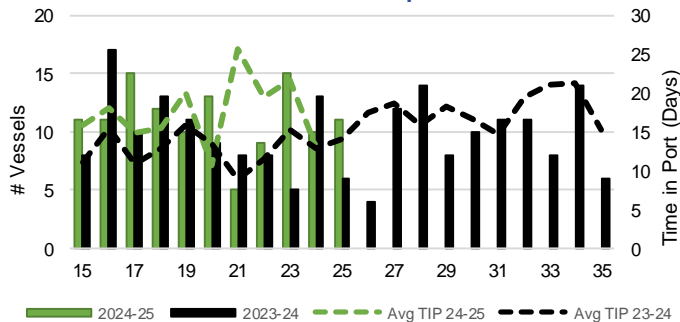
### 5-A Vessel Lineup at Vancouver as of Week 25 2024-25



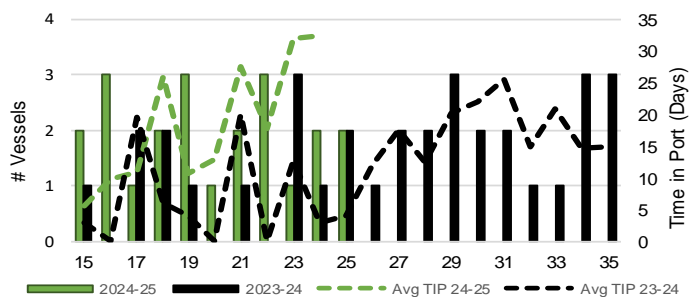
### 5-C Vessel Lineup at Prince Rupert as of Week 25 2024-25



### 5-B Vessels Cleared at Vancouver up to Week 25 2024-25



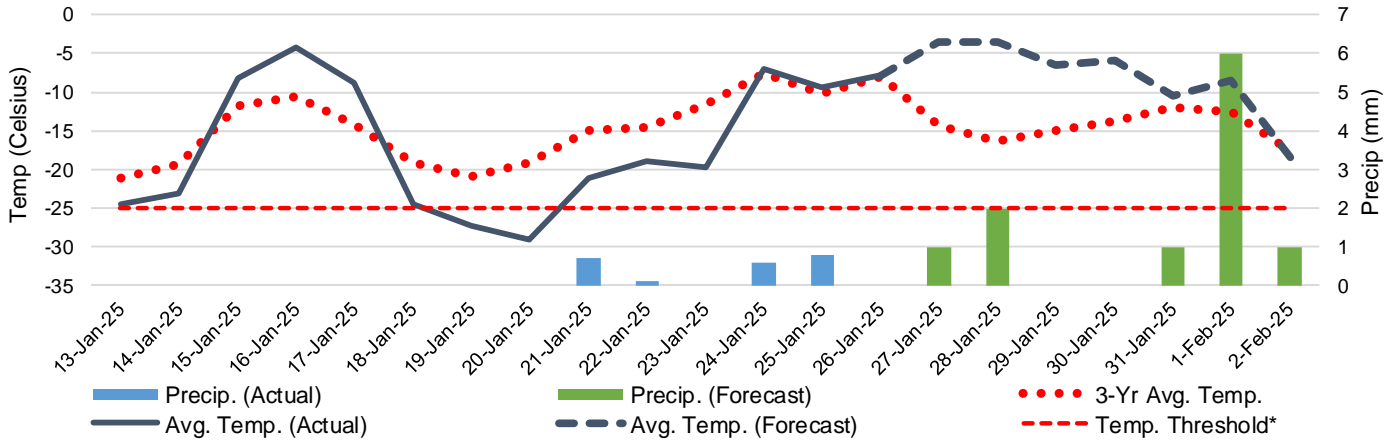
### 5-D Vessels Cleared at Prince Rupert up to Week 25 2024-25



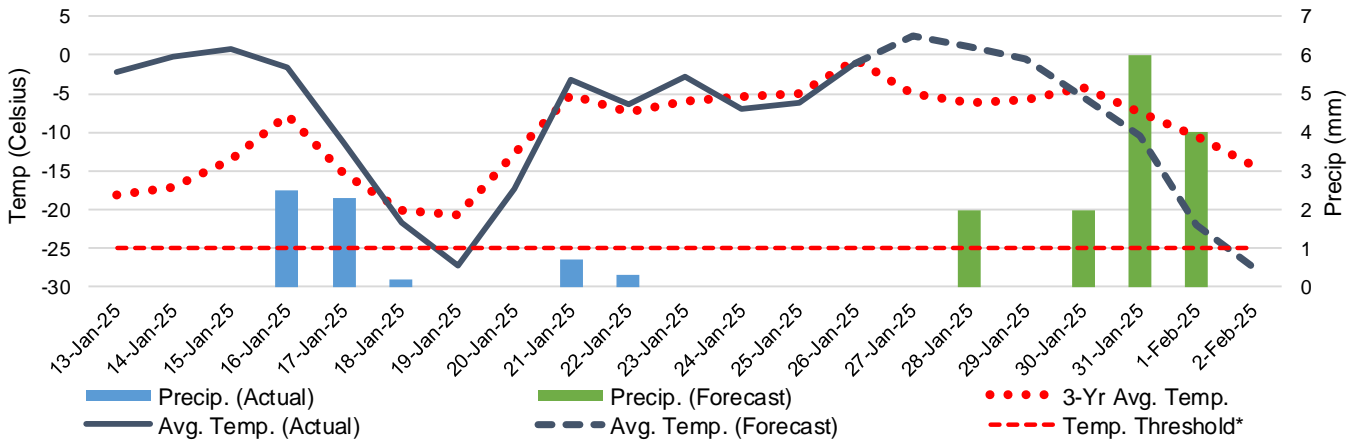
Note: The 'Time in Port' measure for 6-A and 6-C is calculated as how long each vessel in the lineup has been in port as at Sunday 23:59 of that grain week. The 'Avg Time in Port (TIP)' measure for 6-B and 6-D is the average number of days that all vessels which cleared that week were in port. These measures use vessel data provided by the BC Chamber of Shipping and Pacific Pilotage Authority.

# 6. Weather

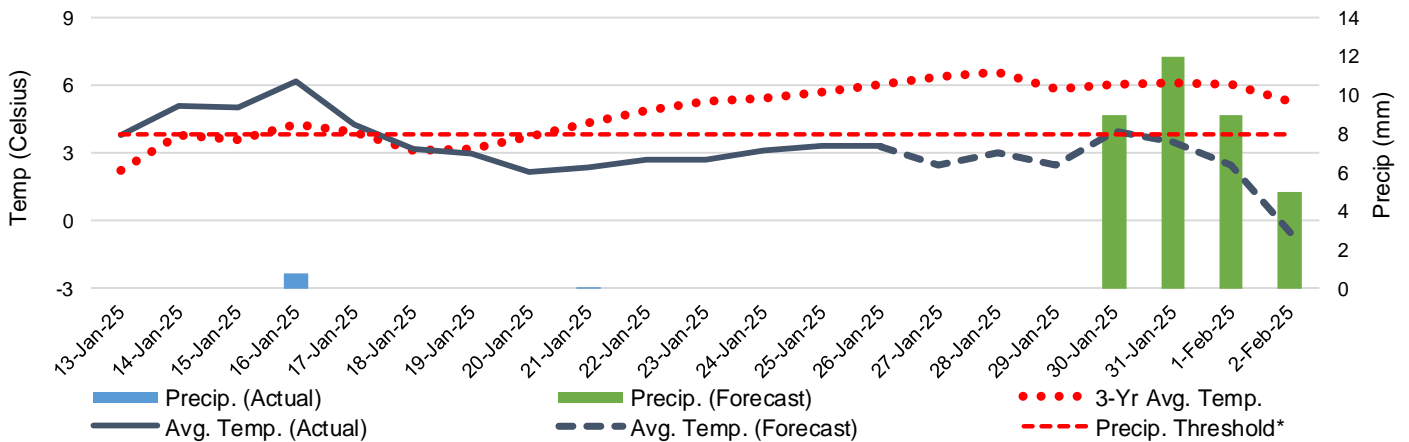
6-A Actual and Forecasted Weather at Winnipeg up to Week 26 2024-25



6-B Actual and Forecasted Weather at Edmonton up to Week 26 2024-25



6-C Actual and Forecasted Weather at Vancouver up to Week 26 2024-25



\*Note: Precip Threshold refers to 8mm of rain. At this level of precipitation, vessel loading may be delayed. The duration of the delay will be dependent on the ship, the duration of rainfall, and the amount of precipitation. 8mm is a general guideline and is not meant to be a definitive limit.  
Source: Environment and Climate Change Canada, The Weather Network (Forecast)