

Grain Monitoring Program

Weekly Performance Update

February 11, 2025

For Grain Week 26 2024-25 CY
January 27, 2025 to February 2, 2025

Summary		Week 26	Week 25	Var. from Last Year	
1. Stocks in Store ('000 tonnes)					
Country Elevators	↑	4,200.7	3,779.0	11%	
% of Working Capacity		79%	71%		
Terminal Elevators	↑	1,071.5	978.4	-1%	
% of Working Capacity		56%	51%		
2. Country Deliveries ('000 tonnes)					
Country Deliveries	↑	1,356.6	1,113.7	2%	
3. Port Performance (Cars)					
Vancouver Unloads	↑	6,116	4,994	17%	
Prince Rupert Unloads	↑	1,387	1,081	26%	
Churchill Unloads	—	0	0	n/a	
Thunder Bay Unloads	↑	102	4	n/a	
Total Weekly Unloads	↑	7,605	6,079	20%	
4-Week Rolling Average	↓	7,555	7,770	42%	
Var. to 4-Week Rolling Average		1%	-22%		
YTD Unloads		235,553	227,948	22%	
Weekly Out-of-Car Time	↑	26.9%	25.9%	189.2%	
4. Terminal Shipments Year-to-Date ('000 tonnes)					
Vancouver	↑	15,553.5	15,107.2	12%	
Prince Rupert	↑	2,487.1	2,361.4	99%	
Churchill	—	0.0	0.0	n/a	
Thunder Bay	↑	4,046.7	4,046.5	9%	
Total Western Canada	↑	22,087.3	21,515.1	17%	
5. Vessels as at Feb 9, 2025					
		Week 27	Week 26	Var. from Last Year	
Vancouver	Vessel Lineup in port	↓	29	32	16%
	Vessels Cleared	↑	10	8	-17%
	Vessels Arrived	↓	7	15	-30%
Pr. Rupert	Vessel Lineup in port	↓	5	6	-38%
	Vessels Cleared	↓	2	3	0%
	Vessels Arrived	↓	1	3	-80%
Vessels Inbound Feb 10, 2025 to Feb 16, 2025 (Week 28)					
Vancouver			17		
Prince Rupert			4		
6. Weather					
		Week 26 Actual	Week 27 Actual	Week 28 Forecast	
Winnipeg Days < -25°C		0	0	2	
Edmonton Days < -25°C		1	2	2	
Vancouver Days Precip > 8mm		3	0	1	

1. Stocks in Store: (Page 2)

- Country stocks increased to 4.2 MMT in Week 26 utilizing 79% of the system's working capacity. Space in primary elevators is good.
- Total western port terminal stocks increased to 1.07 MMT in Week 26, utilizing 56% of the working capacity.
- The overall terminal stock position includes lower stocks during the Thunder Bay winter closure. West Coast stocks are at 70% of working capacity, which maintains balance with country stocks.

2. Country Deliveries: (Page 3)

- Deliveries to primary elevators were 1.36 MMT in Week 26.

3. Port Performance: (Pages 3-5)

- Total western port unloads were 1% higher than the 4-week moving average and 20% higher than Week 26 last year.
- West Coast unloads were 7,503 cars (Vancouver 6,116 and Prince Rupert 1,387), 4% higher than the 4-week moving average and 19% higher than Week 26 last year.
- Thunder Bay unloads were 102 cars, 68% lower than the 4-week moving average. Week 26 last year had 0 unloads.
- The total average terminal out-of-car time (OCT) increased to 26.9% from 25.9% the previous week. The OCT for Week 26 was 26.9% at Vancouver. At the time of publishing, Prince Rupert has not yet reported Week 26 OCT.

4. Shipments: (Page 5)

- Year-to-date Western Canadian shipments from port terminal elevators at Week 26 are 17% higher than the same period last year and 6% higher than the 3-year average.
- The Great Lakes – St. Lawrence Seaway System is closed until March 2025.

5. Vessels: (Page 5)

- Vancouver vessel lineup for Week 27 2024-25 decreased to 29 vessels (The current one-year average at Vancouver is 23 vessels). Of the 29, 8 were at berth, 6 were anchored at English Bay, 2 were anchored at Burrard Inlet, and 13 were anchored at Vancouver Island.
- Prince Rupert vessel lineup for Week 27 2024-25 decreased to 5 vessels (The current one-year average at Prince Rupert is 3 vessels).
- Vessels cleared from Vancouver was 10 and from Prince Rupert was 2 in Week 27 2024-25.

6. Weather: (Page 6)

- Temperatures across the prairies are forecasted to drop below -25C. Railways have invoked their winter operating plans.

1. Stocks in Store

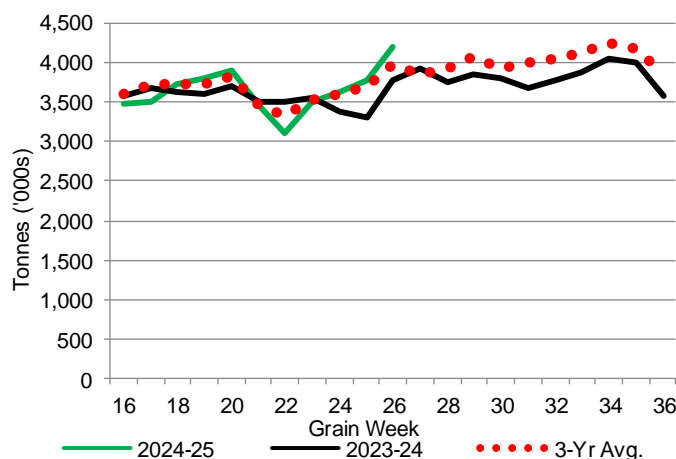
1-A1 Country Stocks ('000 tonnes) – Week 26

	MB	SK	AB	BC	Total
2024-25	815.3	2,102.4	1,266.3	16.7	4,200.7
2023-24	695.0	1,897.8	1,171.8	19.1	3,783.7
3-Yr Avg.	742.4	1,985.0	1,226.5	20.3	3,974.2
Var % - LY	17%	11%	8%	-13%	11%
Var % 3-Yr Avg.	10%	6%	3%	-18%	6%
Storage Capacity	1,626.7	3,989.3	2,508.3	32.1	8,156.4
Estimated Working Capacity	1,057.3	2,593.0	1,630.4	20.9	5,301.6
24-25 % of Wkg Cap	77%	81%	78%	80%	79%

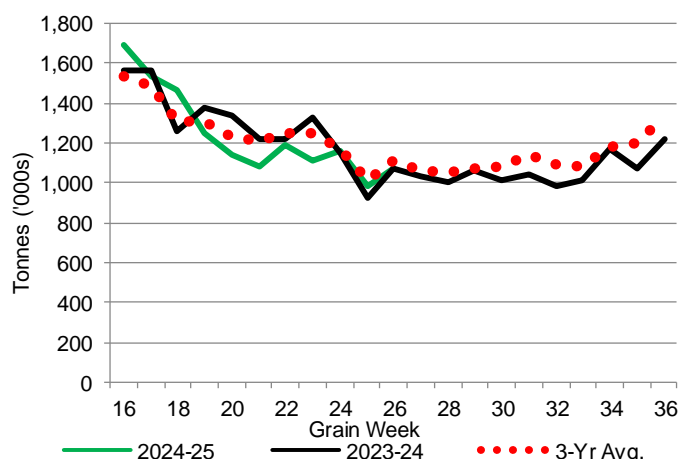
1-B1 Terminal Stocks ('000 tonnes) – Week 26

	VC	PR	West Coast	CH	TB	Total
2024-25	621.3	106.6	727.9	0.7	342.9	1,071.5
2023-24	730.7	126.4	857.1	0.7	218.8	1,076.6
3-Yr Avg.	704	120.3	824.3	0.7	281.4	1,106.4
Var % - LY	-15%	-16%	-15%	0%	57%	0%
Var % 3-Yr Avg.	-12%	-11%	-12%	0%	22%	-3%
Storage Capacity	1,275.5	209.5	1,485.0	140.0	1,127.5	2,752.5
Estimated Working Capacity	892.9	146.7	1,039.6	98.0	789.2	1,926.8
24-25 % of Wkg Cap	70%	73%	70%	1%	43%	56%

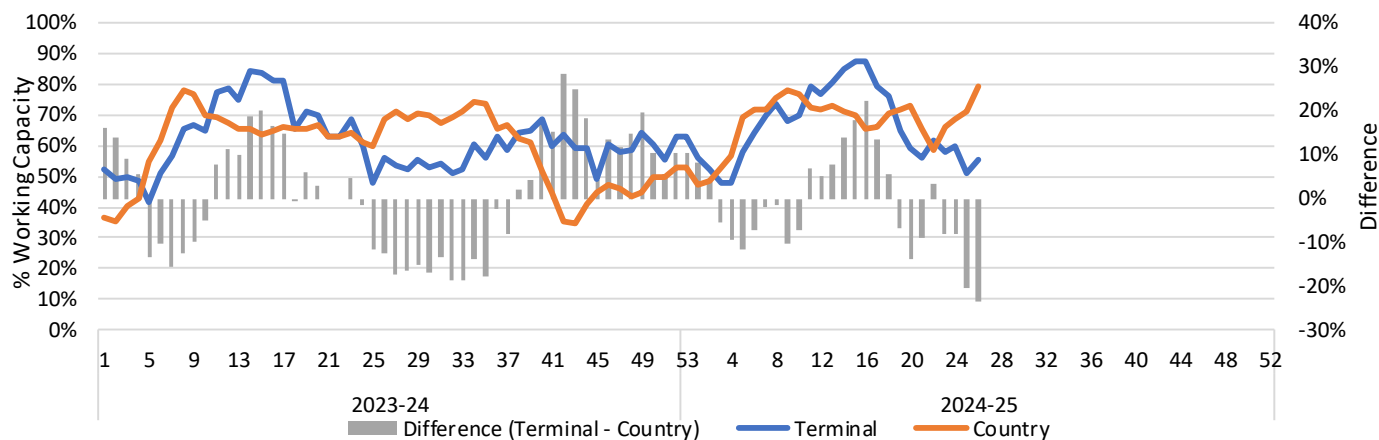
1-A2 Weekly Country Stocks in Store



1-B2 Weekly Terminal Stocks in Store



1-C Weekly Stock Balance

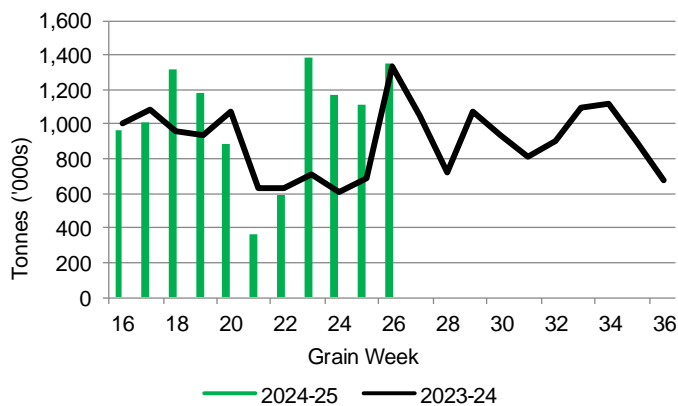


2. Country Deliveries

2-A Country Deliveries ('000 tonnes) – Week 26

	MB	SK	AB	BC	Total
2024-25	210.3	752.3	389.0	5.0	1,356.6
2023-24	174.8	706.7	441.8	9.0	1,332.3
4 Wk Avg	175.8	672.1	402.2	5.6	1,255.7
Var % to Last Year	20%	7%	-12%	-44%	2%
Var % To 4 Wk Avg	20%	12%	-3%	-11%	8%

2-B 2024-25 Weekly Country Deliveries



3. Port Performance

3-A Weekly Unloads by Port (Cars) – This Year for Week 26, 4-Week Moving Average and Variances

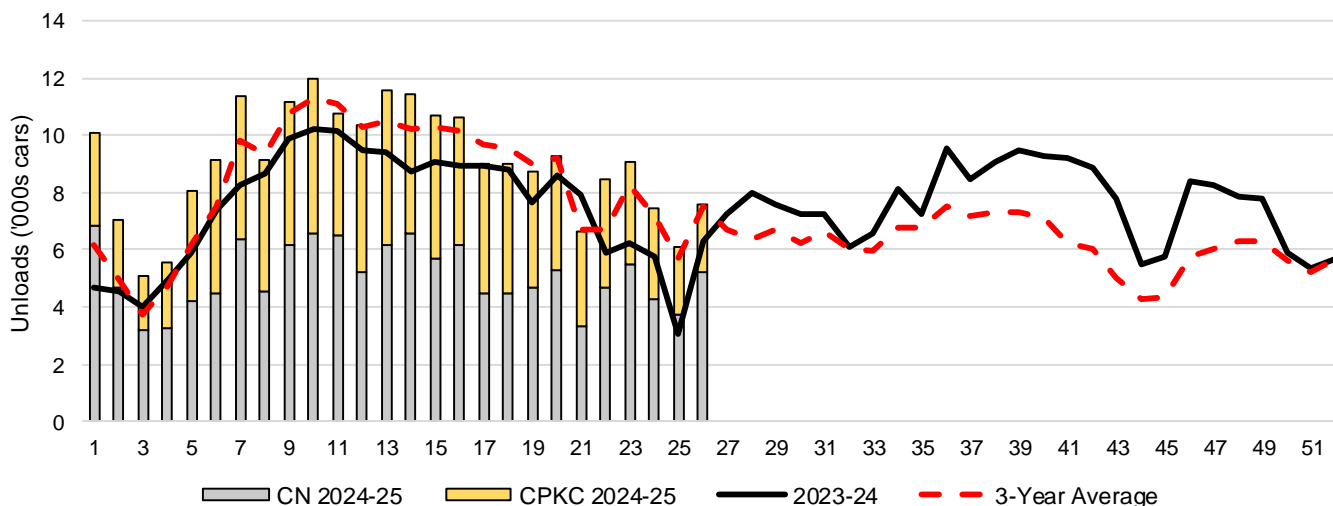
	Vancouver	Prince Rupert	West Coast	Thunder Bay	Churchill	Total
2024-25	6,116	1,387	7,503	102	-	7,605
2023-24	5,224	1,105	6,329	n/a	n/a	6,329
4-Wk Avg.	6,033	1,204	7,237	318	-	7,555
Var % to Last Year	17%	26%	19%	n/a	n/a	20%
Var % to 4-Wk Avg.	1%	15%	4%	-68%	n/a	1%

3-B Terminal Unloads by Port – This Year-to-Date as at Week 26 and Variances

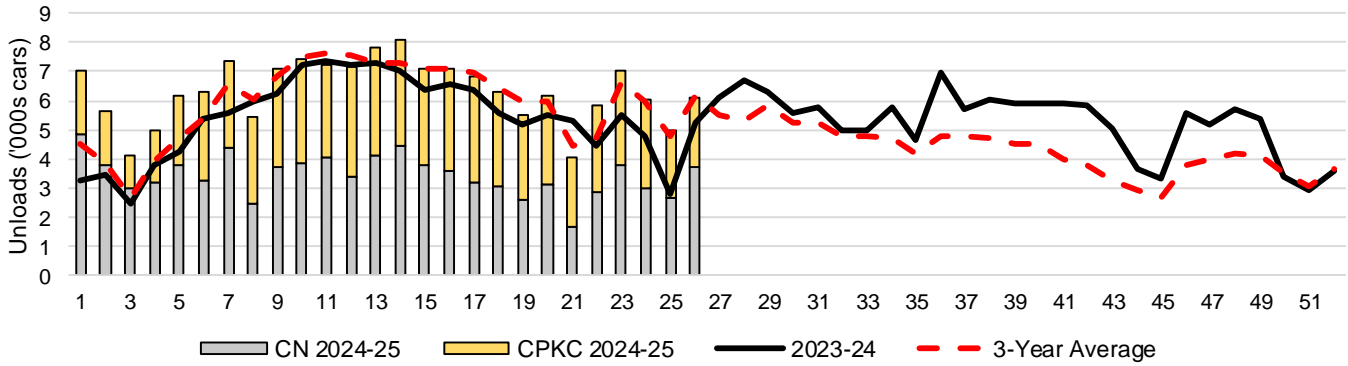
YTD Unloads (cars)	Vancouver	Prince Rupert	West Coast	Thunder Bay	Churchill	Total
2024-25	164,674	25,716	190,390	45,163	-	235,553
2023-24	140,075	13,082	153,157	40,302	-	193,459
3-Yr Avg	153,842	21,115	174,957	41,697	-	216,653
Var % to Last Year	18%	97%	24%	12%	n/a	22%
Var % to 3-Yr Avg	7%	22%	9%	8%	n/a	9%

YTD Unloads ('000 tonnes)	Vancouver	Prince Rupert	West Coast	Thunder Bay	Churchill	Total
2024-25	15,629.8	2,475.8	18,105.6	4,360.0	-	22,465.6
2023-24	13,553.1	1,275.4	14,828.5	3,891.0	-	18,719.5
3-Yr Avg.	14,785.9	2,038.4	16,824.3	4,014.7	-	20,839.0
Var % to Last Year	15%	94%	22%	12%	n/a	20%
Var % to 3-Yr Avg.	6%	21%	8%	9%	n/a	8%

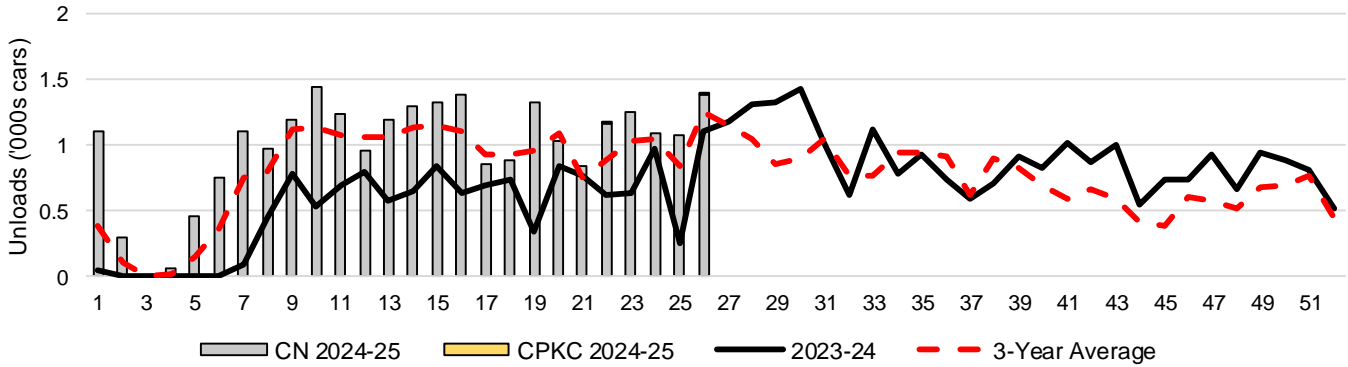
3-C Western Port Terminal Unloads (cars), Total by Carrier, This Year vs. Last Year and the 3-Year Average



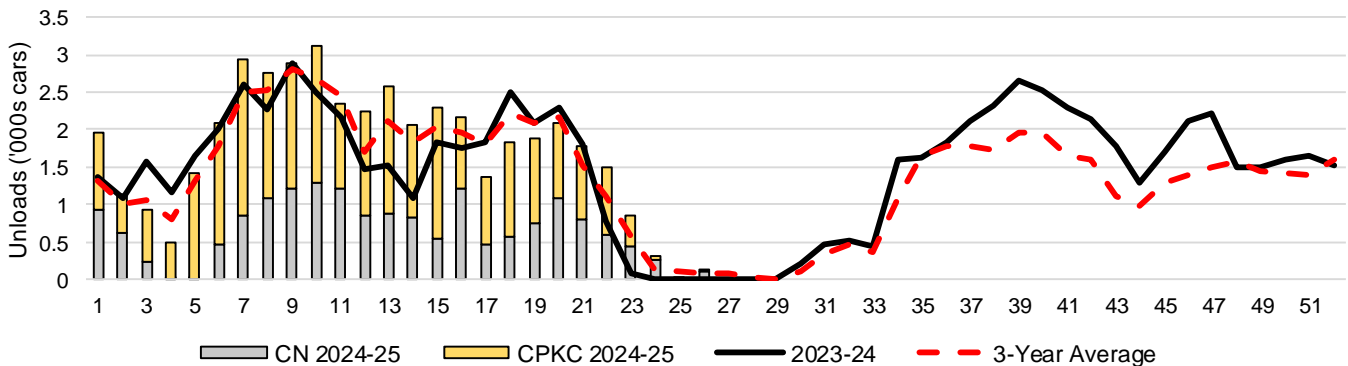
3-D Vancouver Terminal Unloads (cars), Total by Carrier, This Year vs. Last Year and the 3-Year Average



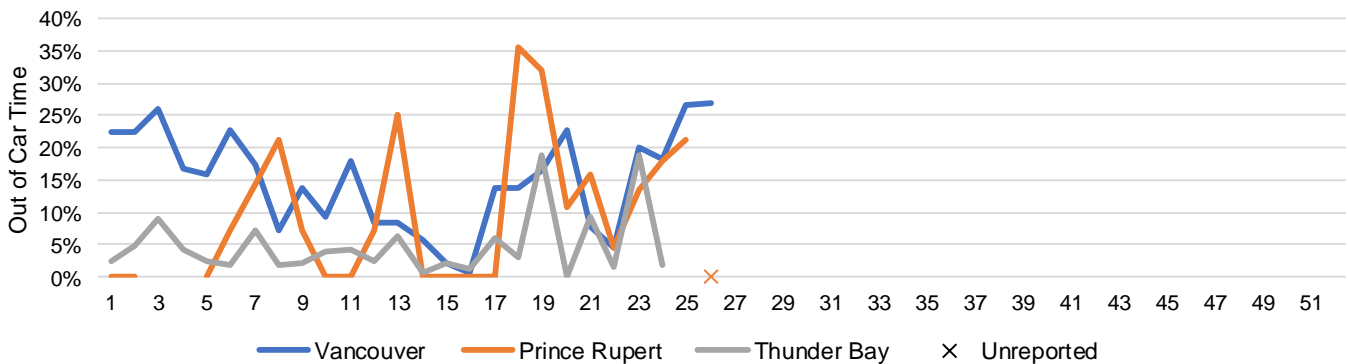
3-E Prince Rupert Terminal Unloads (cars), Total by Carrier, This Year vs. Last Year and the 3-Year Average



3-F Thunder Bay Terminal Unloads (cars), Total by Carrier, This Year vs. Last Year and the 3-Year Average



3-G Weekly Out-of-Car Time (% of hours out-of-cars / total hours working)



Out-of-car time is measured weekly and uses data from terminal elevators on the total number of hours the facilities are open & staffed (including overtime hours) and the corresponding number of hours that terminals have no railcars available to unload. The measure is expressed as a percentage (hours without cars to the total number of hours working).

3-H Monthly Unloads (cars) – This Year vs. Last Year and the 3-Year Average to Week 26 2024-25

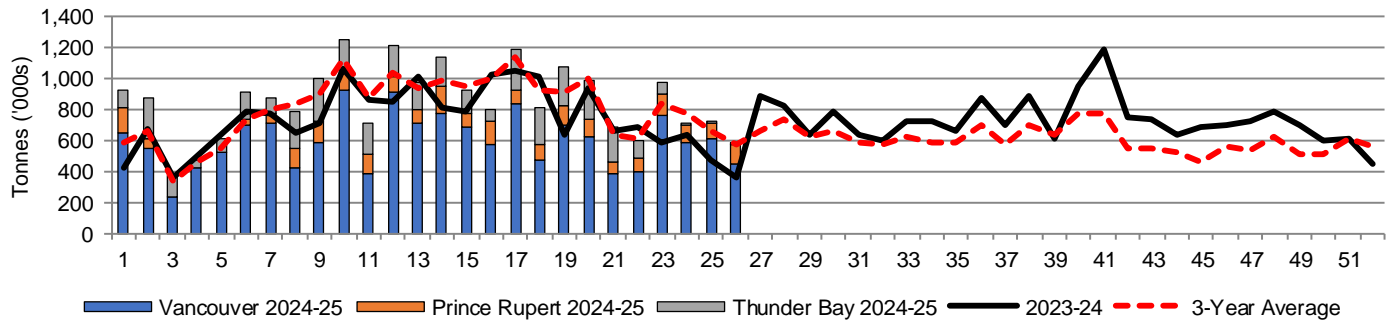
Months	Aug	Sep	Oct	Nov	Dec	Jan	Feb	Mar	Apr	May	Jun	Jul
Weeks	1-4	5-8	9-13	14-17	18-21	22-26	27-30	31-34	35-39	40-43	44-47	48-52
2024-25	27,783	37,719	55,870	41,798	33,698	38,685	-	-	-	-	-	-
2023-24	18,158	30,245	49,223	35,668	32,949	27,216	30,125	28,067	43,763	35,188	27,940	34,740
3-Yr Avg.	19,641	32,831	53,921	40,398	34,537	35,326	26,039	25,346	36,061	24,354	20,425	29,824
Var % to Last Year	53%	25%	14%	17%	2%	42%						
Var % to 3-Yr Avg.	41%	15%	4%	3%	-2%	10%						

4. Shipments

4-A Shipments from Port Terminals ('000 tonnes) – This Year-to-Date as at Week 26 and Variance to Last Year-to-Date

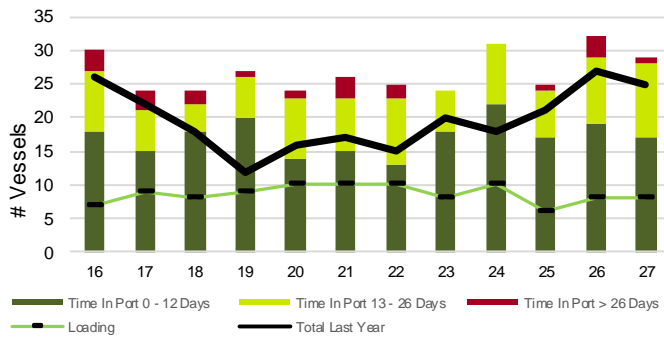
	Vancouver	Prince Rupert	West Coast	Thunder Bay	Churchill	Total
2024-25	15,553.5	2,487.1	18,040.6	4,046.7	-	22,087.3
2023-24	13,949.4	1,248.7	15,198.1	3,711.0	-	18,909.1
3-Yr Avg.	14,927.2	2,006.2	16,933.5	3,833.2	-	20,766.7
Var % to Last Year	11%	99%	19%	9%	n/a	17%
Var % to 3-Yr Avg.	4%	24%	7%	6%	n/a	6%

4-B Weekly Shipments ('000 tonnes) from Port Terminals – This Year vs Last Year and the 3-Year Average

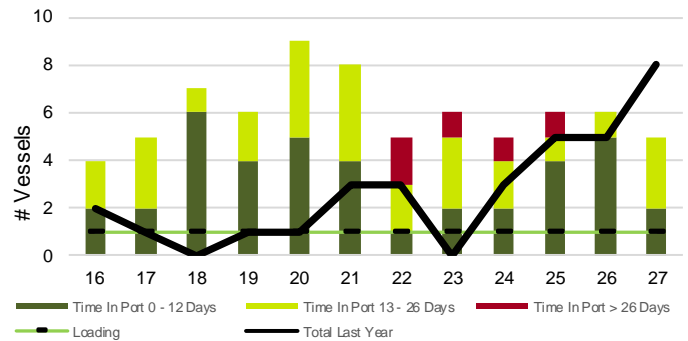


5. Vessels

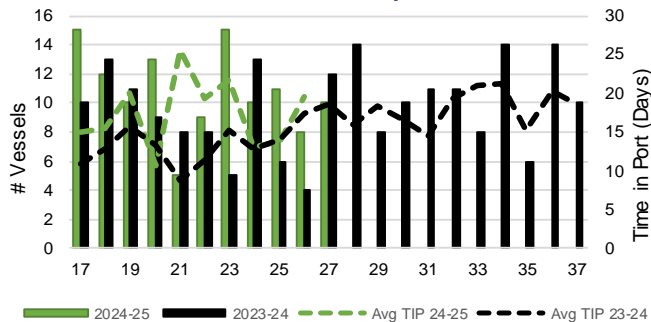
5-A Vessel Lineup at Vancouver as of Week 27 2024-25



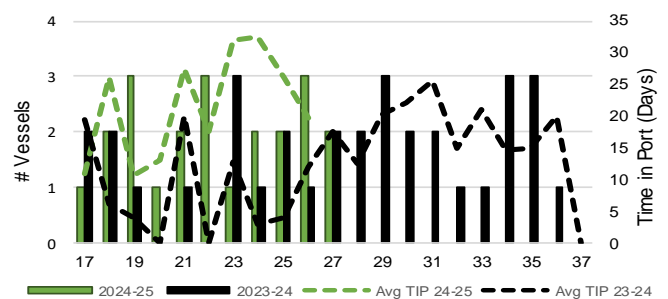
5-C Vessel Lineup at Prince Rupert as of Week 27 2024-25



5-B Vessels Cleared at Vancouver up to Week 27 2024-25



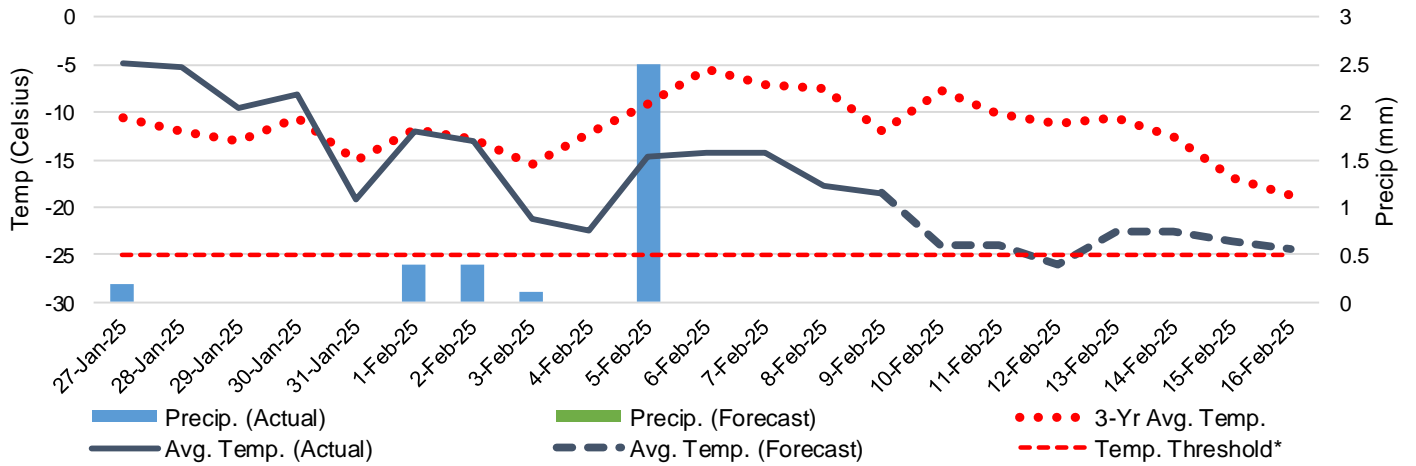
5-D Vessels Cleared at Prince Rupert up to Week 27 2024-25



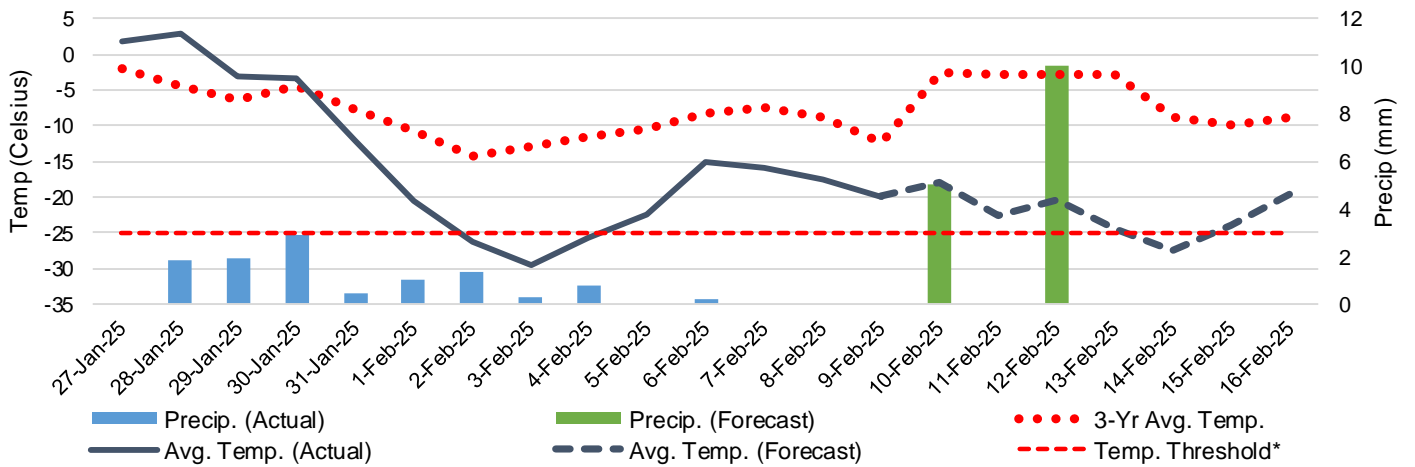
Note: The 'Time in Port' measure for 6-A and 6-C is calculated as how long each vessel in the lineup has been in port as at Sunday 23:59 of that grain week. The 'Avg Time in Port (TIP)' measure for 6-B and 6-D is the average number of days that all vessels which cleared that week were in port. These measures use vessel data provided by the BC Chamber of Shipping and Pacific Pilotage Authority.

6. Weather

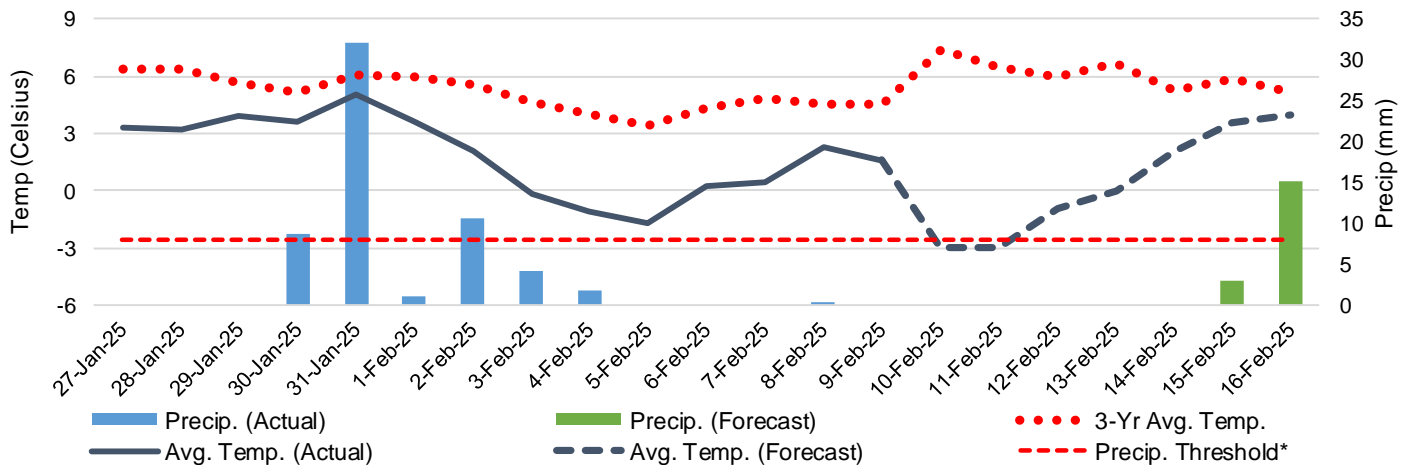
6-A Actual and Forecasted Weather at Winnipeg up to Week 28 2024-25



6-B Actual and Forecasted Weather at Edmonton up to Week 28 2024-25



6-C Actual and Forecasted Weather at Vancouver up to Week 28 2024-25



*Note: Precip Threshold refers to 8mm of rain. At this level of precipitation, vessel loading may be delayed. The duration of the delay will be dependent on the ship, the duration of rainfall, and the amount of precipitation. 8mm is a general guideline and is not meant to be a definitive limit.
Source: Environment and Climate Change Canada, The Weather Network (Forecast)