

Grain Monitoring Program

Weekly Performance Update

March 11, 2025

For Grain Week 30 2024-25 CY
February 24, 2025 to March 02, 2025

Summary

	Week 30	Week 29	Var. from Last Year	
1. Stocks in Store ('000 tonnes)				
Country Elevators	↑ 4,499.0	4,242.7	18%	
% of Working Capacity	85%	80%		
Terminal Elevators	↑ 1,123.7	1,058.3	11%	
% of Working Capacity	58%	55%		
2. Country Deliveries ('000 tonnes)				
Country Deliveries	↑ 1,231.6	750.4	32%	
3. Port Performance (Cars)				
Vancouver Unloads	↑ 5,595	4,989	0%	
Prince Rupert Unloads	↓ 837	838	-42%	
Churchill Unloads	— 0	0	n/a	
Thunder Bay Unloads	↑ 63	0	-71%	
Total Weekly Unloads	↑ 6,495	5,827	-10%	
4-Week Rolling Average	↓ 6,339	6,616	-16%	
Var. to 4-Week Rolling Average	2%	-12%		
YTD Unloads	260,906	254,411	17%	
Weekly Out-of-Car Time	↓ 41.6%	47.2%	37.7%	
4. Terminal Shipments Year-to-Date ('000 tonnes)				
Vancouver	↑ 17,672.4	17,133.1	7%	
Prince Rupert	↑ 2,832.9	2,732.5	58%	
Churchill	— 0.0	0.0	n/a	
Thunder Bay	↑ 4,049.1	4,046.8	9%	
Total Western Canada	↑ 24,554.4	23,912.4	11%	
5. Vessels as at Mar 9, 2025				
	Week 31	Week 30	Var. from Last Year	
Vancouver	Vessel Lineup in port	↑ 40	37	54%
	Vessels Cleared	↓ 8	11	-27%
	Vessels Arrived	↓ 11	14	175%
Prince Rupert	Vessel Lineup in port	↑ 7	6	40%
	Vessels Cleared	— 1	1	-50%
	Vessels Arrived	↑ 2	1	-33%
Vessels Inbound Mar 10, 2025 to Mar 16, 2025 (Week 32)				
Vancouver	7			
Prince Rupert	3			
6. Weather				
	Week 30 Actual	Week 31 Actual	Week 32 Forecast	
Winnipeg Days < -25°C	0	0	0	
Edmonton Days < -25°C	0	0	0	
Vancouver Days Precip > 8mm	1	2	4	

1. Stocks in Store: (Page 2)

- Country stocks increased to 4.50 MMT in Week 30 utilizing 85% of the system's working capacity. Overall space in primary elevators is good but limited in Saskatchewan at 92% of working capacity.
- Total western port terminal stocks increased to 1.12 MMT in Week 30, utilizing 58% of the working capacity.
- The overall terminal stock position includes lower stocks during the Thunder Bay winter closure. West Coast stocks are at 73% of working capacity, which maintains balance with country stocks.

2. Country Deliveries: (Page 3)

- Deliveries to primary elevators were 1.23 MMT in Week 30.

3. Port Performance: (Pages 3-5)

- Total western port unloads were 2% higher than the 4-week moving average and 10% lower than Week 30 last year.
- West Coast unloads were 6,432 cars (Vancouver 5,595 and Prince Rupert 837), 2% higher than the 4-week moving average and 9% lower than Week 30 last year.
- Thunder Bay had 63 unloads, 25% higher than the 4-week moving average and 71% lower than Week 30 last year.
- The total average terminal out-of-car time (OCT) decreased to 41.6% from 47.2% the previous week. The OCT for Week 30 was 41.7% at Vancouver and 41.1% at Prince Rupert.

4. Shipments: (Page 5)

- Year-to-date Western Canadian shipments from port terminal elevators at Week 30 are 11% higher than the same period last year and 4% higher than the 3-year average.
- The Great Lakes – St. Lawrence Seaway System is closed. Opening of the 2025 navigation season is scheduled as follows:
 - Montreal / Lake Ontario section on March 22, 2025
 - Welland Canal on March 22, 2025
 - Sault Ste. Marie Locks and Canal on March 25, 2025

5. Vessels: (Page 5)

- Vancouver vessel lineup for Week 31 2024-25 increased to 40 vessels (The current one-year average at Vancouver is 23 vessels). Of the 40, 10 were at berth, 9 were anchored at English Bay, and 21 were anchored at Vancouver Island.
- Prince Rupert vessel lineup for Week 31 2024-25 increased to 7 vessels (The current one-year average at Prince Rupert is 4 vessels).
- Vessels cleared from Vancouver was 8 and from Prince Rupert was 1 in Week 31 2024-25.
- 18 of the 40 vessels at Vancouver and 4 of the 7 vessels at Prince Rupert are estimated to be on demurrage in Week 31.

6. Weather: (Page 6)

- Temperatures across the prairies are forecasted to remain above -25C. Railways are not expected to invoke their winter operating plans.
- Vancouver is forecast to receive high precipitation during Week 32 which may impact the ability to load grain into vessels.

1. Stocks in Store

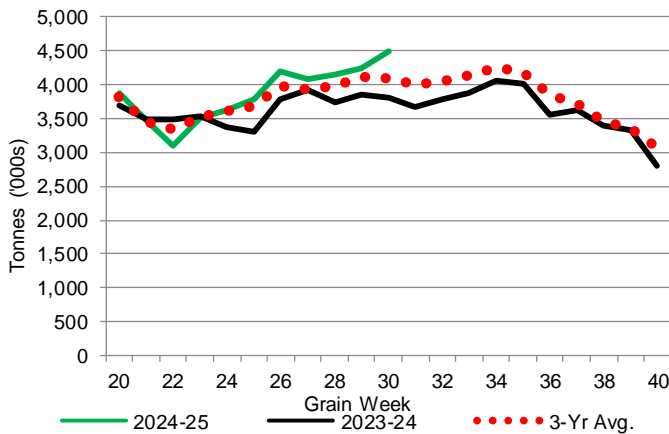
1-A1 Country Stocks ('000 tonnes) – Week 30

	MB	SK	AB	BC	Total
2024-25	897.4	2,377.9	1,206.2	17.5	4,499.0
2023-24	744.2	1,982.8	1,053.3	20.5	3,800.8
3-Yr Avg.	818.3	2,095.3	1,161.4	20.3	4,095.3
Var % - LY	21%	20%	15%	-15%	18%
Var % 3-Yr Avg.	10%	13%	4%	-14%	10%
Storage Capacity	1,626.7	3,989.3	2,508.3	32.1	8,156.4
Estimated Working Capacity	1,057.3	2,593.0	1,630.4	20.9	5,301.6
24-25 % of Wkg Cap	85%	92%	74%	84%	85%

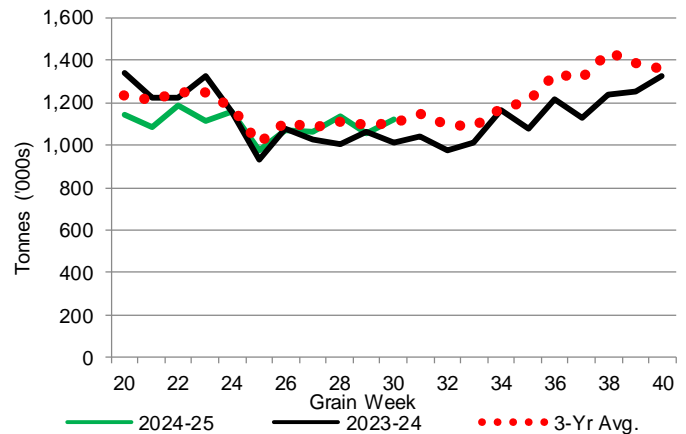
1-B1 Terminal Stocks ('000 tonnes) – Week 30

	VC	PR	West Coast	CH	TB	Total
2024-25	654.5	108.0	762.5	0.7	360.5	1,123.7
2023-24	679.8	93.7	773.5	0.7	240.9	1,015.1
3-Yr Avg.	678.5	118.2	796.7	0.7	304.2	1,101.6
Var % - LY	-4%	15%	-1%	0%	50%	11%
Var % 3-Yr Avg.	-4%	-9%	-4%	0%	19%	2%
Storage Capacity	1,275.5	209.5	1,485.0	140.0	1,127.5	2,752.5
Estimated Working Capacity	892.9	146.7	1,039.6	98.0	789.2	1,926.8
24-25 % of Wkg Cap	73%	74%	73%	1%	46%	58%

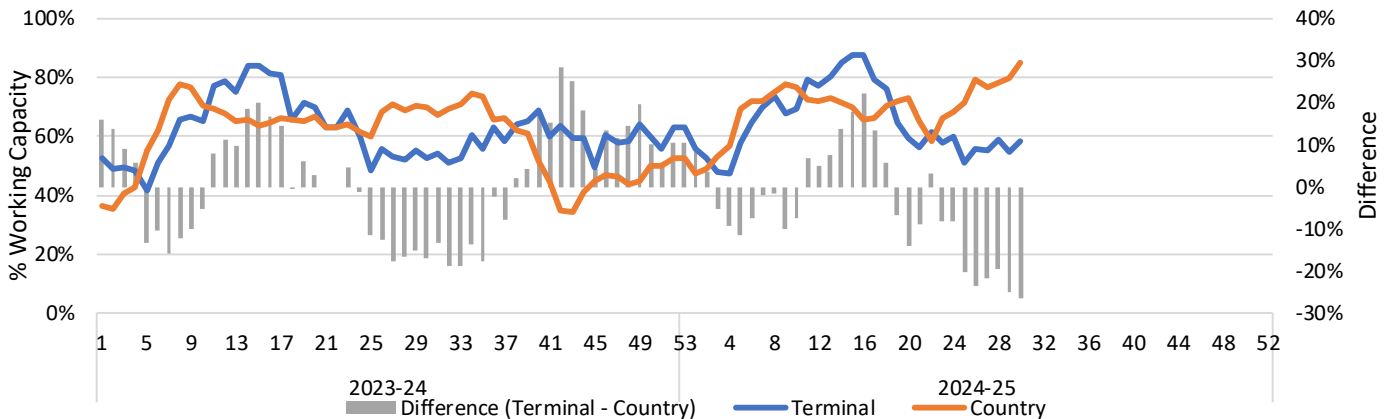
1-A2 Weekly Country Stocks in Store



1-B2 Weekly Terminal Stocks in Store



1-C Weekly Stock Balance

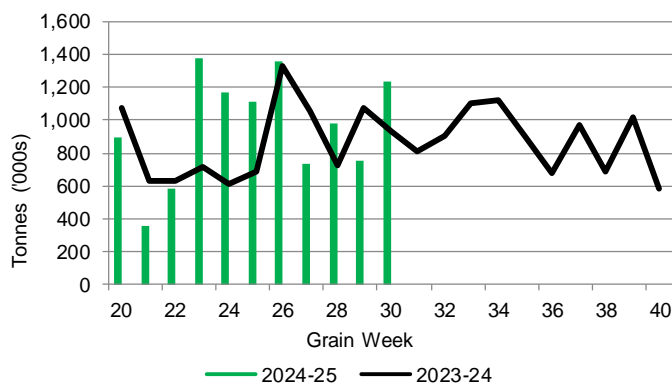


2. Country Deliveries

2-A Country Deliveries ('000 tonnes) – Week 30

	MB	SK	AB	BC	Total
2024-25	166.4	652.2	408.1	4.9	1,231.6
2023-24	140.9	500.4	288.2	5.8	935.3
4 Wk Avg	129.1	478.9	310.2	5.5	923.6
Var % to Last Year	18%	30%	42%	-16%	32%
Var % To 4 Wk Avg	29%	36%	32%	-11%	33%

2-B 2024-25 Weekly Country Deliveries



3. Port Performance

3-A Weekly Unloads by Port (Cars) – This Year for Week 30, 4-Week Moving Average and Variances

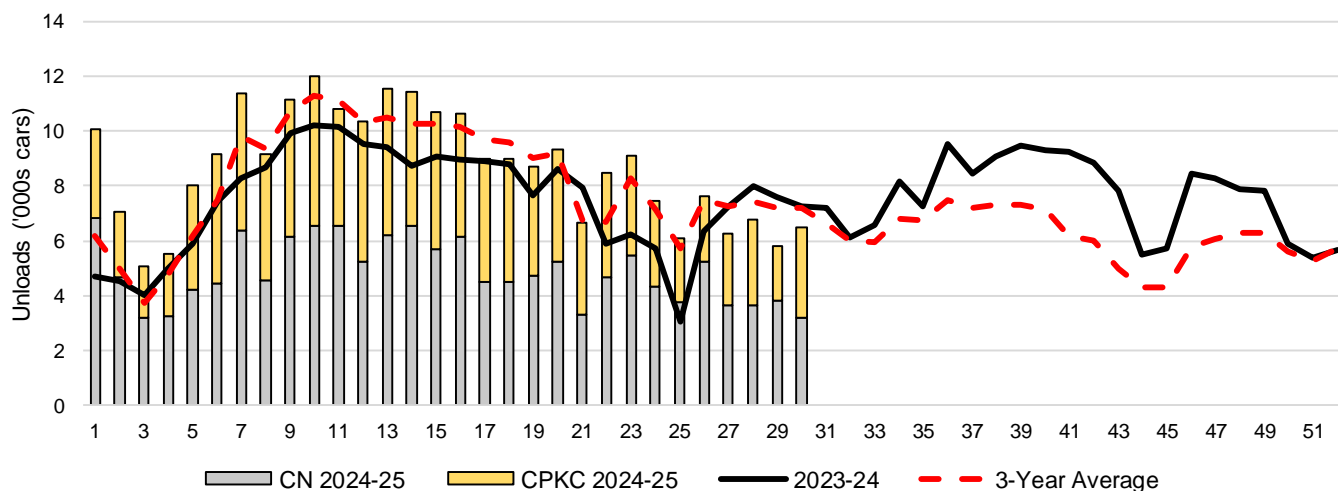
	Vancouver	Prince Rupert	West Coast	Thunder Bay	Churchill	Total
2024-25	5,595	837	6,432	63	-	6,495
2023-24	5,602	1,436	7,038	218	n/a	7,256
4-Wk Avg.	5,409	879	6,288	51	-	6,339
Var % to Last Year	0%	-42%	-9%	-71%	n/a	-10%
Var % to 4-Wk Avg.	3%	-5%	2%	25%	n/a	2%

3-B Terminal Unloads by Port – This Year-to-Date as at Week 30 and Variances

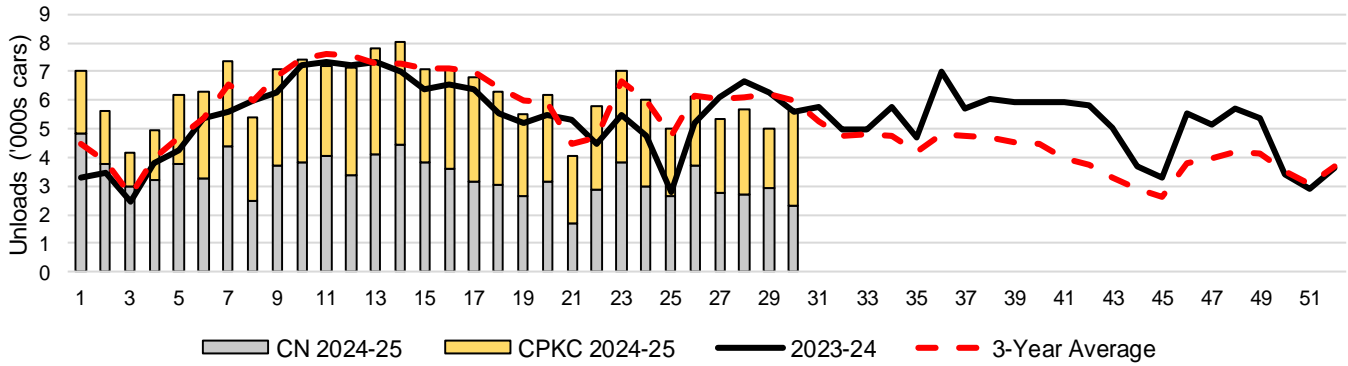
YTD Unloads (cars)	Vancouver	Prince Rupert	West Coast	Thunder Bay	Churchill	Total
2024-25	186,308	29,233	215,541	45,365	-	260,906
2023-24	164,715	18,349	183,064	40,520	-	223,584
3-Yr Avg	178,201	25,568	203,769	41,933	-	245,702
Var % to Last Year	13%	59%	18%	12%	n/a	17%
Var % to 3-Yr Avg	5%	14%	6%	8%	n/a	6%

YTD Unloads ('000 tonnes)	Vancouver	Prince Rupert	West Coast	Thunder Bay	Churchill	Total
2024-25	17,696.0	2,817.3	20,513.3	4,379.9	-	24,893.2
2023-24	15,979.1	1,782.9	17,762.0	3,912.2	-	21,674.2
3-Yr Avg.	17,128.9	2,466.3	19,595.2	4,037.5	-	23,632.7
Var % to Last Year	11%	58%	15%	12%	n/a	15%
Var % to 3-Yr Avg.	3%	14%	5%	8%	n/a	5%

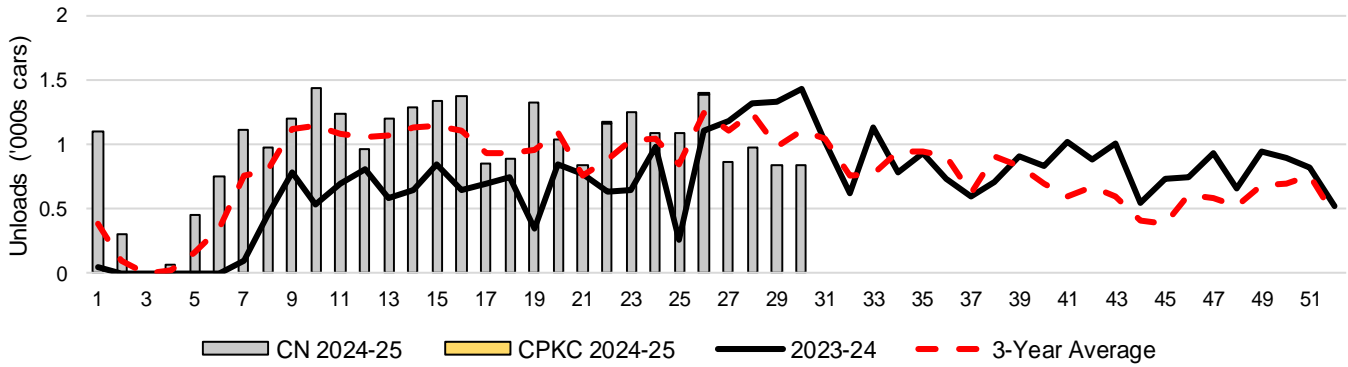
3-C Western Port Terminal Unloads (cars), Total by Carrier, This Year vs. Last Year and the 3-Year Average



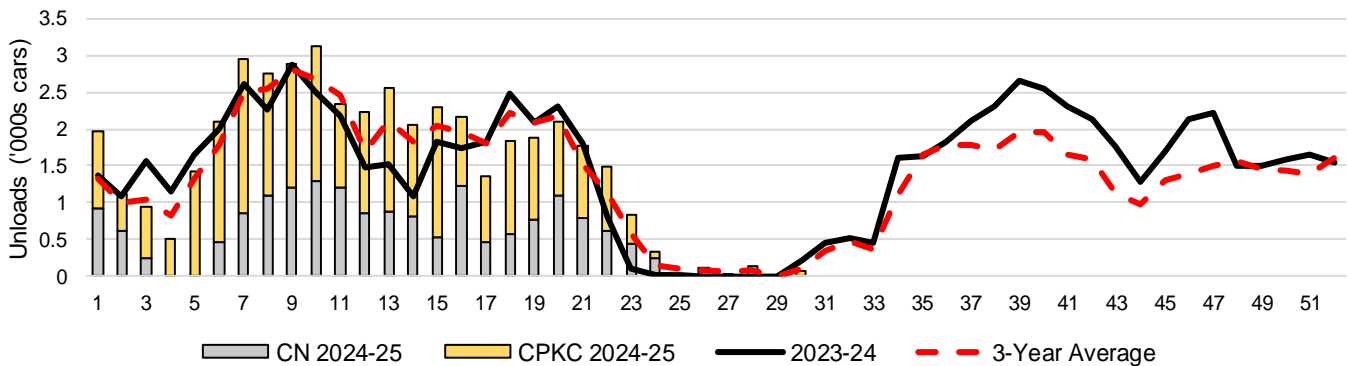
3-D Vancouver Terminal Unloads (cars), Total by Carrier, This Year vs. Last Year and the 3-Year Average



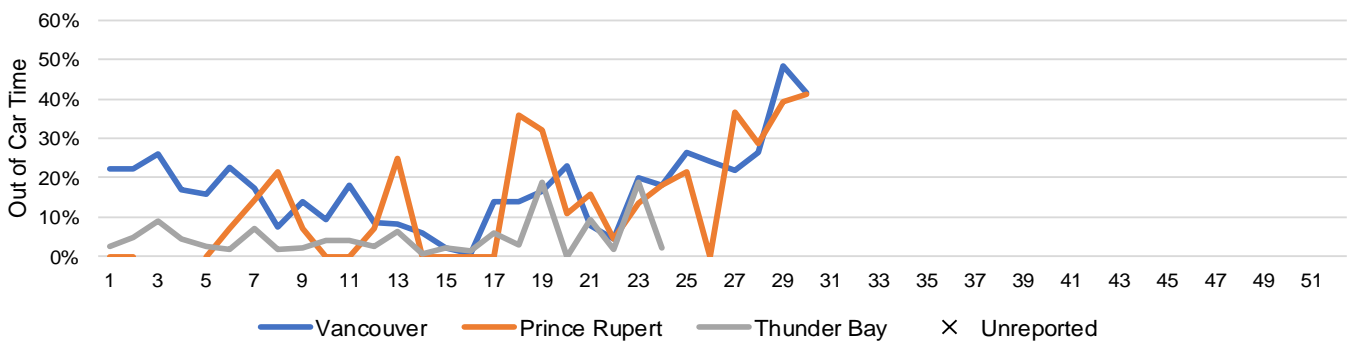
3-E Prince Rupert Terminal Unloads (cars), Total by Carrier, This Year vs. Last Year and the 3-Year Average



3-F Thunder Bay Terminal Unloads (cars), Total by Carrier, This Year vs. Last Year and the 3-Year Average



3-G Weekly Out-of-Car Time (% of hours out-of-cars / total hours working)



Out-of-car time is measured weekly and uses data from terminal elevators on the total number of hours the facilities are open & staffed (including overtime hours) and the corresponding number of hours that terminals have no railcars available to unload. The measure is expressed as a percentage (hours without cars to the total number of hours working).

3-H Monthly Unloads (cars) – This Year vs. Last Year and the 3-Year Average to Week 30 2024-25

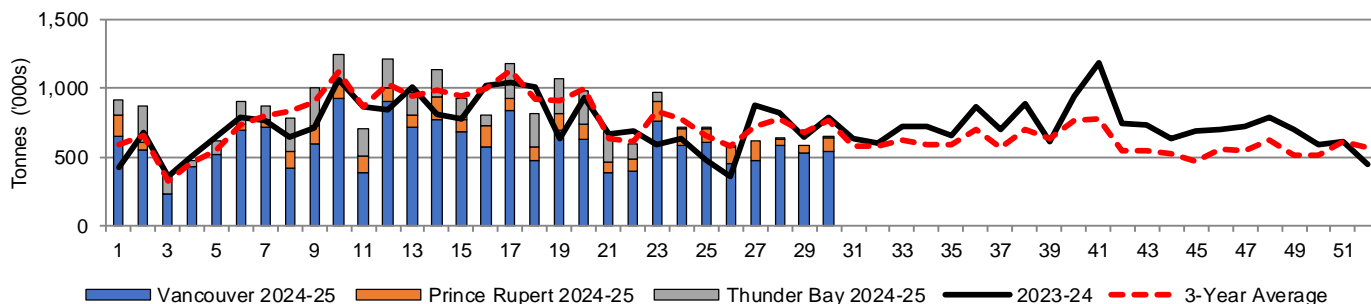
Months	Aug	Sep	Oct	Nov	Dec	Jan	Feb	Mar	Apr	May	Jun	Jul
Weeks	1-4	5-8	9-13	14-17	18-21	22-26	27-30	31-34	35-39	40-43	44-47	48-52
2024-25	27,783	37,719	55,870	41,798	33,698	38,684	25,354	-	-	-	-	-
2023-24	18,158	30,245	49,223	35,668	32,949	27,216	30,125	28,067	43,763	35,188	27,940	34,740
3-Yr Avg.	19,641	32,831	53,921	40,398	34,537	35,325	29,049	25,346	36,061	24,354	20,425	29,824
Var % to Last Year	53%	25%	14%	17%	2%	42%	-16%					
Var % to 3-Yr Avg.	41%	15%	4%	3%	-2%	10%	-13%					

4. Shipments

4-A Shipments from Port Terminals ('000 tonnes) – This Year-to-Date as at Week 30 and Variance to Last Year-to-Date

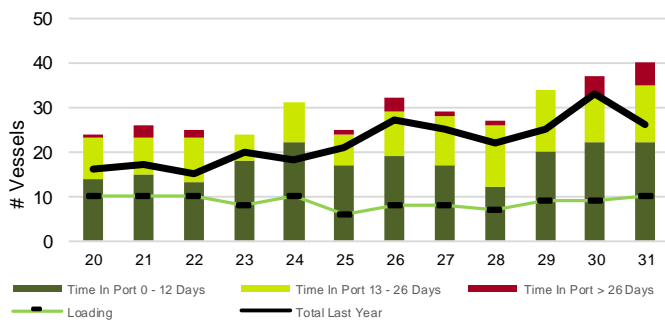
	Vancouver	Prince Rupert	West Coast	Thunder Bay	Churchill	Total
2024-25	17,672.4	2,832.9	20,505.3	4,049.1	-	24,554.4
2023-24	16,541.4	1,789.8	18,331.2	3,712.1	-	22,043.3
3-Yr Avg.	17,450.7	2,437.7	19,888.4	3,834.4	-	23,722.8
Var % to Last Year	7%	58%	12%	9%	n/a	11%
Var % to 3-Yr Avg.	1%	16%	3%	6%	n/a	4%

4-B Weekly Shipments ('000 tonnes) from Port Terminals – This Year vs Last Year and the 3-Year Average

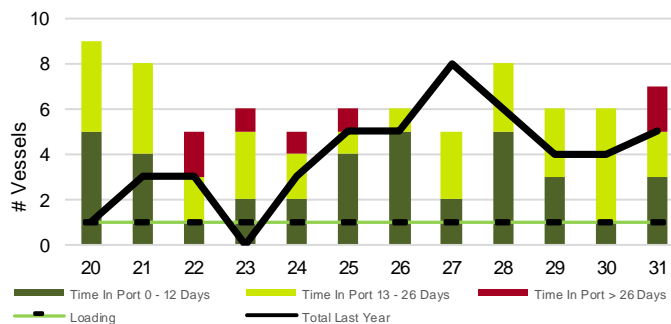


5. Vessels

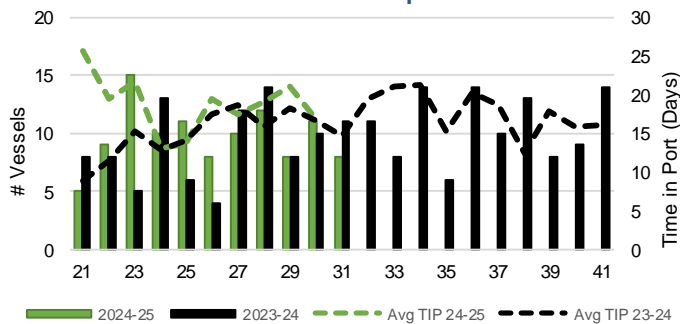
5-A Vessel Lineup at Vancouver as of Week 31 2024-25



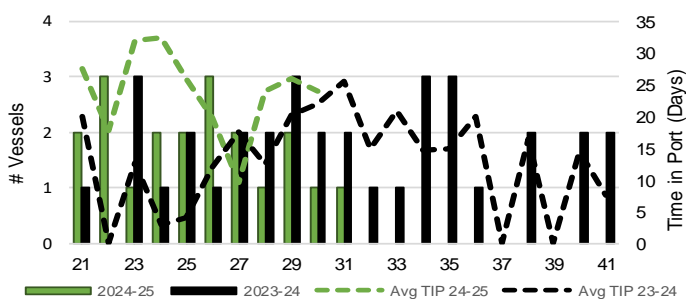
5-C Vessel Lineup at Prince Rupert as of Week 31 2024-25



5-B Vessels Cleared at Vancouver up to Week 31 2024-25



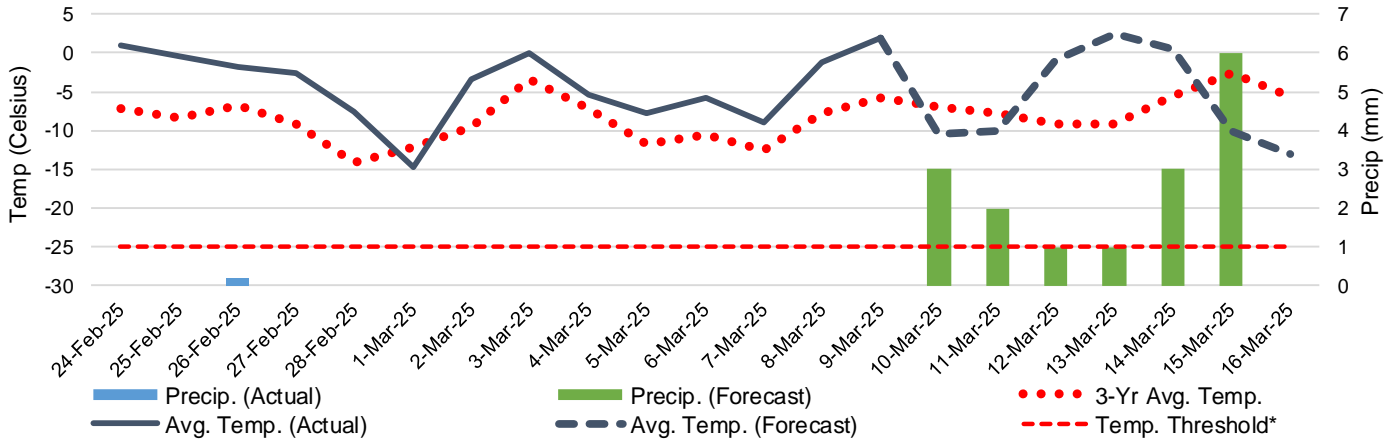
5-D Vessels Cleared at Prince Rupert up to Week 31 2024-25



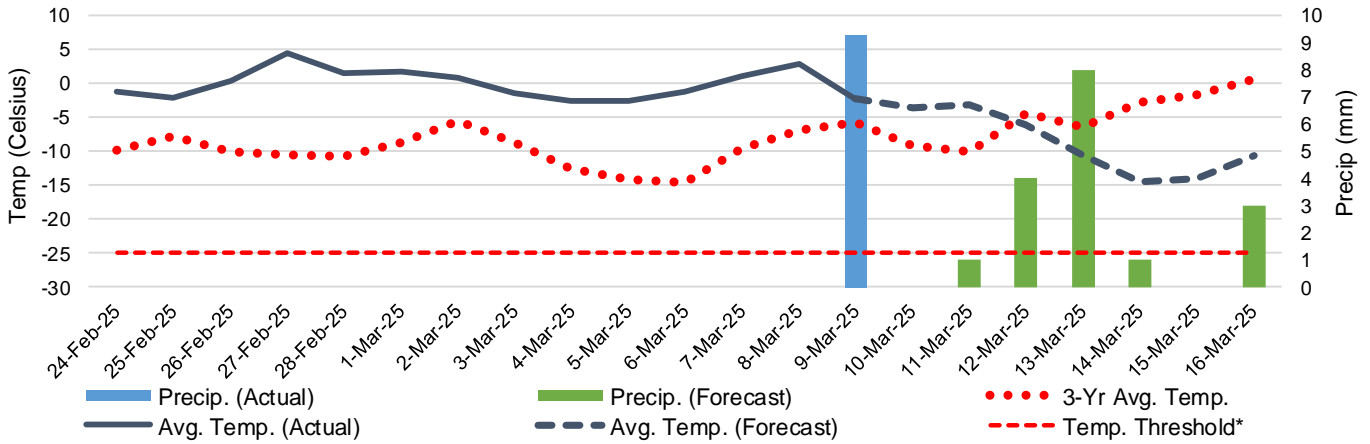
Note: The 'Time in Port' measure for 6-A and 6-C is calculated as how long each vessel in the lineup has been in port as at Sunday 23:59 of that grain week. The 'Avg Time in Port (TIP)' measure for 6-B and 6-D is the average number of days that all vessels which cleared that week were in port. These measures use vessel data provided by the BC Chamber of Shipping and Pacific Pilotage Authority.

6. Weather

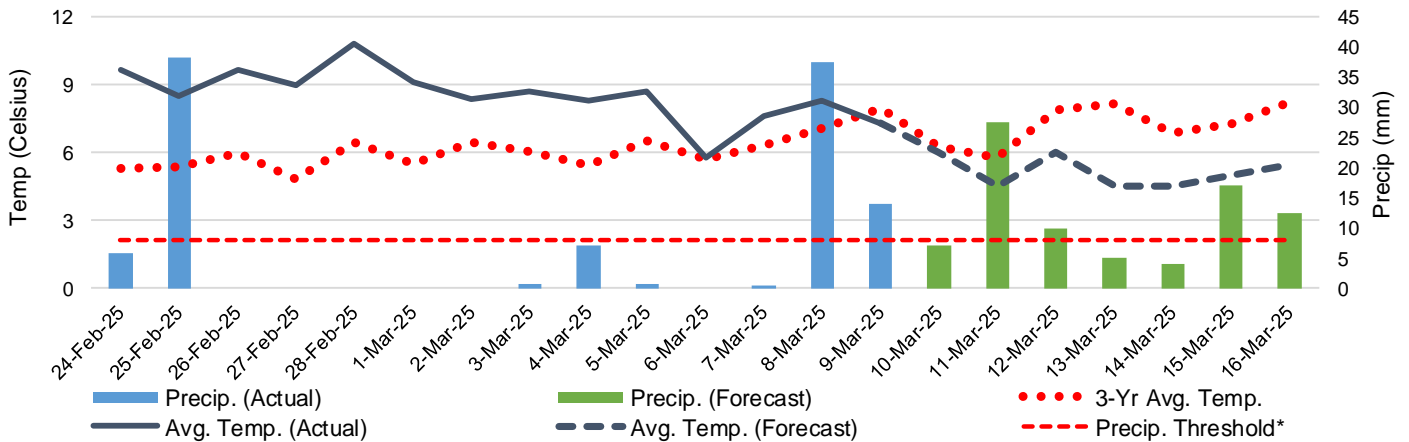
6-A Actual and Forecasted Weather at Winnipeg up to Week 32 2024-25



6-B Actual and Forecasted Weather at Edmonton up to Week 32 2024-25



6-C Actual and Forecasted Weather at Vancouver up to Week 32 2024-25



*Note: Precip Threshold refers to 8mm of rain. At this level of precipitation, vessel loading may be delayed. The duration of the delay will be dependent on the ship, the duration of rainfall, and the amount of precipitation. 8mm is a general guideline and is not meant to be a definitive limit.
Source: Environment and Climate Change Canada, The Weather Network (Forecast)