

Grain Monitoring Program

Weekly Performance Update

April 15, 2025

For Grain Week 35 2024-25 CY
March 31, 2025 to April 06, 2025

Summary

Week 35 Week 34 Var. from Last Year

1. Stocks in Store ('000 tonnes)

Country Elevators	↑ 4,537.2	4,519.7	13%
% of Working Capacity	86%	85%	
Terminal Elevators	↓ 1,234.3	1,377.4	15%
% of Working Capacity	64%	71%	

2. Country Deliveries ('000 tonnes)

Country Deliveries	↑ 1,089.7	887.2	21%
--------------------	-----------	-------	-----

3. Port Performance (Cars)

Vancouver Unloads	↓ 6,292	6,359	35%
Prince Rupert Unloads	↓ 953	1,435	2%
Churchill Unloads	— 0	0	n/a
Thunder Bay Unloads	↑ 1,743	1,274	7%
Total Weekly Unloads	↓ 8,988	9,068	24%
4-Week Rolling Average	↑ 8,858	8,600	26%
Var. to 4-Week Rolling Average	1%	5%	
YTD Unloads	305,210	296,222	18%
Weekly Out-of-Car Time	↑ 19.6%	17.4%	1.0%

4. Terminal Shipments Year-to-Date ('000 tonnes)

Vancouver	↑ 20,773.6	20,042.6	8%
Prince Rupert	↑ 3,470.1	3,349.2	53%
Churchill	— 0.0	0.0	n/a
Thunder Bay	↑ 4,302.2	4,157.2	10%
Total Western Canada	↑ 28,545.9	27,549.0	13%

5. Vessels as at Apr 13, 2025

	Week 36	Week 35	Var. from Last Year
Vancouver Vessel Lineup in port	↑ 27	22	23%
Vancouver Vessels Cleared	↓ 10	17	-29%
Vancouver Vessels Arrived	↑ 15	10	67%
Pr. Rupert Vessel Lineup in port	↓ 4	5	100%
Pr. Rupert Vessels Cleared	↑ 3	1	200%
Pr. Rupert Vessels Arrived	— 2	2	0%

Vessels Inbound Apr 14, 2025 to Apr 20, 2025 (Week 37)

Vancouver	13
Prince Rupert	2

6. Weather

	Week 35 Actual	Week 36 Actual	Week 37 Forecast
Winnipeg Days < -25°C	0	0	0
Edmonton Days < -25°C	0	0	0
Vancouver Days Precip > 8mm	2	2	0

1. Stocks in Store: (Page 2)

- Country stocks increased to 4.54 MMT in Week 35 utilizing 86% of the system's working capacity. Space in primary elevators is limited.
- Total western port terminal stocks decreased to 1.23 MMT in Week 35, utilizing 64% of the working capacity.

2. Country Deliveries: (Page 3)

- Deliveries to primary elevators were 1.09 MMT in Week 35.
- Axle Weight Restrictions (road bans) are in effect across the prairies.

3. Port Performance: (Pages 3-5)

- Total western port unloads were 1% higher than the 4-week moving average and 24% higher than Week 35 last year.
- West Coast unloads were 7,245 cars (Vancouver 6,292 and Prince Rupert 953), 6% lower than the 4-week moving average and 29% higher than Week 35 last year.
- Thunder Bay had 1,743 unloads, 50% higher than the 4-week moving average and 7% higher than Week 35 last year.
- The total average terminal out-of-car time (OCT) increased to 19.6% from 17.4% the previous week. The OCT for Week 35 was 25.6% at Vancouver and 3.2% at Thunder Bay. At the time of publishing, Prince Rupert had not yet reported Week 35 OCT.

4. Shipments: (Page 5)

- Year-to-date Western Canadian shipments from port terminal elevators at Week 35 are 12% higher than the same period last year and 4% higher than the 3-year average.

5. Vessels: (Page 5)

- Vancouver vessel lineup for Week 36 2024-25 increased to 27 vessels (The current one-year average at Vancouver is 24 vessels). Of the 27, 10 were at berth, 9 were anchored at English Bay, 2 were anchored at Burrard Inlet, and 6 were anchored at Vancouver Island.
- Prince Rupert vessel lineup for Week 36 2024-25 decreased to 4 vessels (The current one-year average at Prince Rupert is 4 vessels).
- Vessels cleared from Vancouver was 10 and from Prince Rupert was 3 in Week 36 2024-25.

6. Weather: (Page 6)

- Temperatures across the prairies are forecasted to remain above -25C. Railways are not expected to invoke their winter operating plans.

1. Stocks in Store

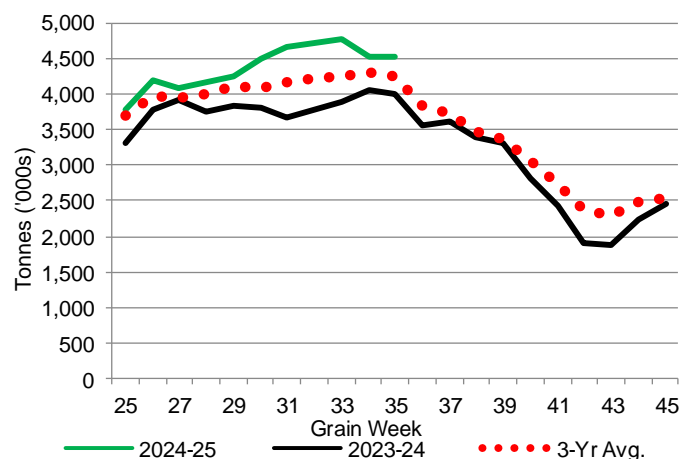
1-A1 Country Stocks ('000 tonnes) – Week 35

	MB	SK	AB	BC	Total
2024-25	858.0	2,332.5	1,328.5	18.2	4,537.2
2023-24	771.5	2,100.3	1,108.7	22.2	4,002.7
3-Yr Avg.	820.9	2,145.2	1,262.0	20.9	4,249.0
Var % - LY	11%	11%	20%	-18%	13%
Var % 3-Yr Avg.	5%	9%	5%	-13%	7%
Storage Capacity	1,626.7	3,989.3	2,508.3	32.1	8,156.4
Estimated Working Capacity	1,057.3	2,593.0	1,630.4	20.9	5,301.6
24-25 % of Wkg Cap	81%	90%	81%	87%	86%

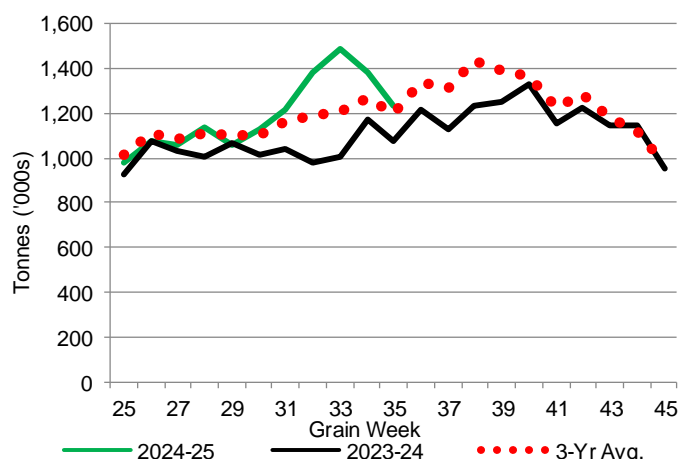
1-B1 Terminal Stocks ('000 tonnes) – Week 35

	VC	PR	West Coast	CH	TB	Total
2024-25	756.4	82.1	838.5	0.7	395.1	1,234.3
2023-24	593.9	71.8	665.7	0.7	408.2	1,074.6
3-Yr Avg.	639.8	92.3	732.1	0.7	464.9	1,197.7
Var % - LY	27%	14%	26%	0%	-3%	15%
Var % 3-Yr Avg.	18%	-11%	15%	0%	-15%	3%
Storage Capacity	1,275.5	209.5	1,485.0	140.0	1,127.5	2,752.5
Estimated Working Capacity	892.9	146.7	1,039.6	98.0	789.2	1,926.8
24-25 % of Wkg Cap	85%	56%	81%	1%	50%	64%

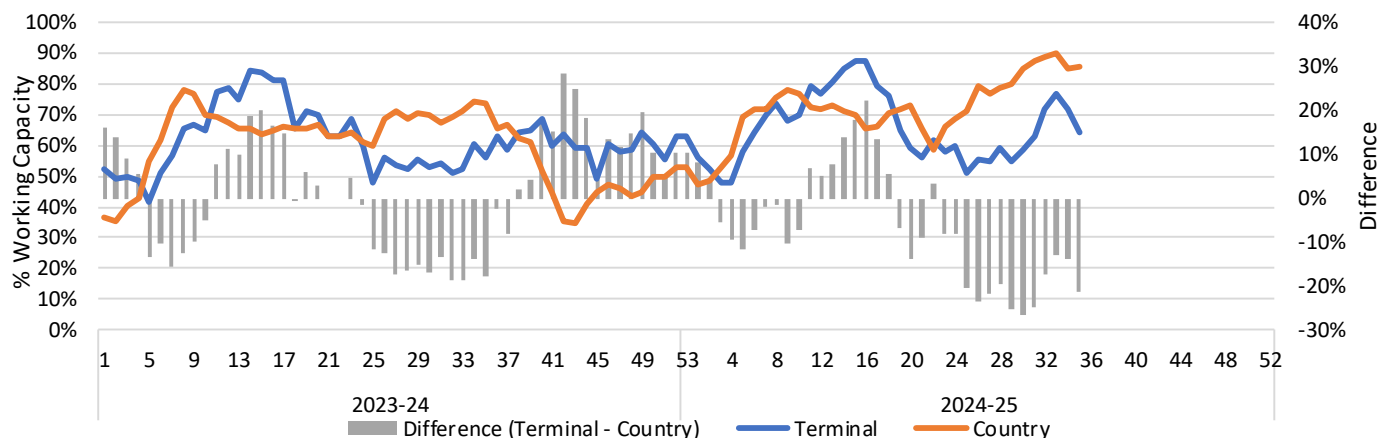
1-A2 Weekly Country Stocks in Store



1-B2 Weekly Terminal Stocks in Store



1-C Weekly Stock Balance

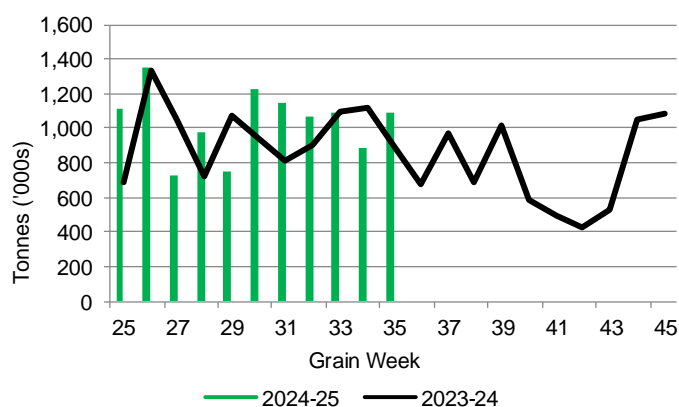


2. Country Deliveries

2-A Country Deliveries ('000 tonnes) – Week 35

	MB	SK	AB	BC	Total
2024-25	148.6	592.7	342.6	5.8	1,089.7
2023-24	170.0	443.5	281.1	4.5	899.1
4 Wk Avg	146.0	550.8	332.8	5.3	1,034.9
Var % to Last Year	-13%	34%	22%	29%	21%
Var % To 4 Wk Avg	2%	8%	3%	9%	5%

2-B 2024-25 Weekly Country Deliveries



3. Port Performance

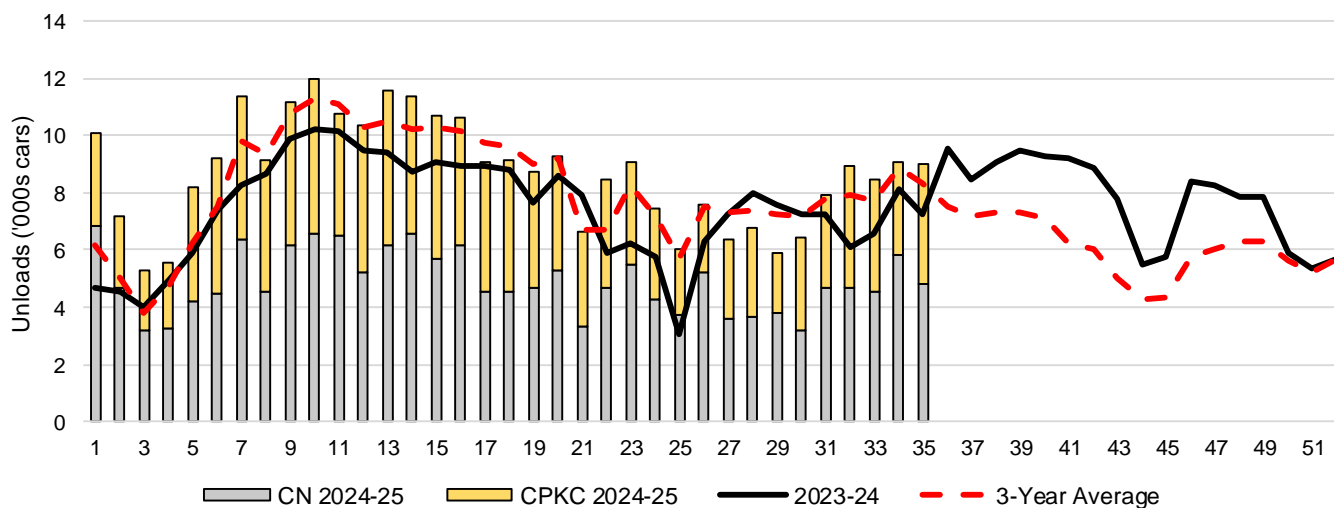
3-A Weekly Unloads by Port (Cars) – This Year for Week 35, 4-Week Moving Average and Variances

	Vancouver	Prince Rupert	West Coast	Thunder Bay	Churchill	Total
2024-25	6,292	953	7,245	1,743	-	8,988
2023-24	4,669	934	5,603	1,632	n/a	7,235
4-Wk Avg.	6,513	1,180	7,694	1,165	-	8,858
Var % to Last Year	35%	2%	29%	7%	n/a	24%
Var % to 4-Wk Avg.	-3%	-19%	-6%	50%	n/a	1%

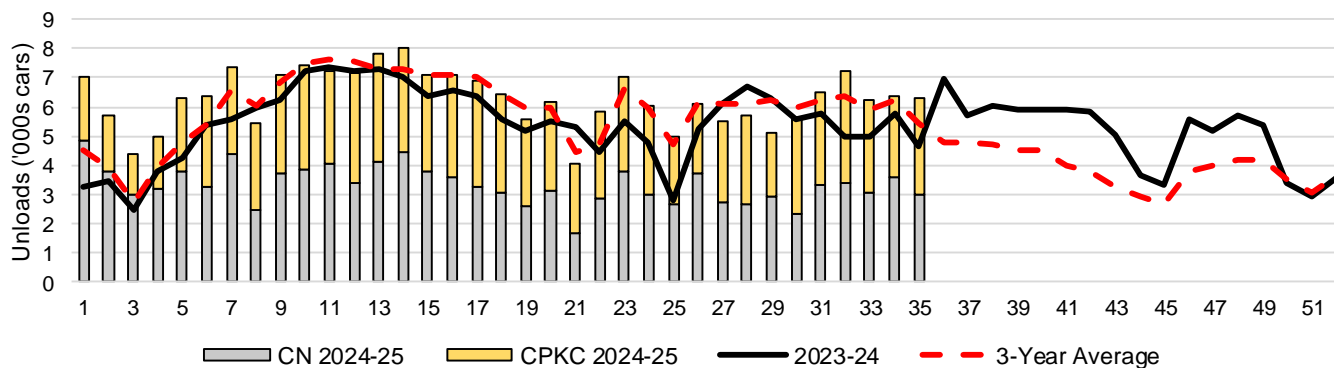
3-B Terminal Unloads by Port – This Year-to-Date as at Week 35 and Variances

YTD Unloads (cars)	Vancouver	Prince Rupert	West Coast	Thunder Bay	Churchill	Total
2024-25	219,754	35,272	255,026	50,184	-	305,210
2023-24	190,868	22,829	213,697	45,189	-	258,886
3-Yr Avg	208,634	31,298	239,932	46,714	-	286,645
Var % to Last Year	15%	55%	19%	11%	n/a	18%
Var % to 3-Yr Avg	5%	13%	6%	7%	n/a	6%
YTD Unloads ('000 tonnes)						
2024-25	20,881.8	3,403.5	24,285.3	4,841.4	-	29,126.7
2023-24	18,473.4	2,217.2	20,690.6	4,365.6	-	25,056.2
3-Yr Avg.	20,027.1	3,020.7	23,047.8	4,502.3	-	27,550.1
Var % to Last Year	13%	54%	17%	11%	n/a	16%
Var % to 3-Yr Avg.	4%	13%	5%	8%	n/a	6%

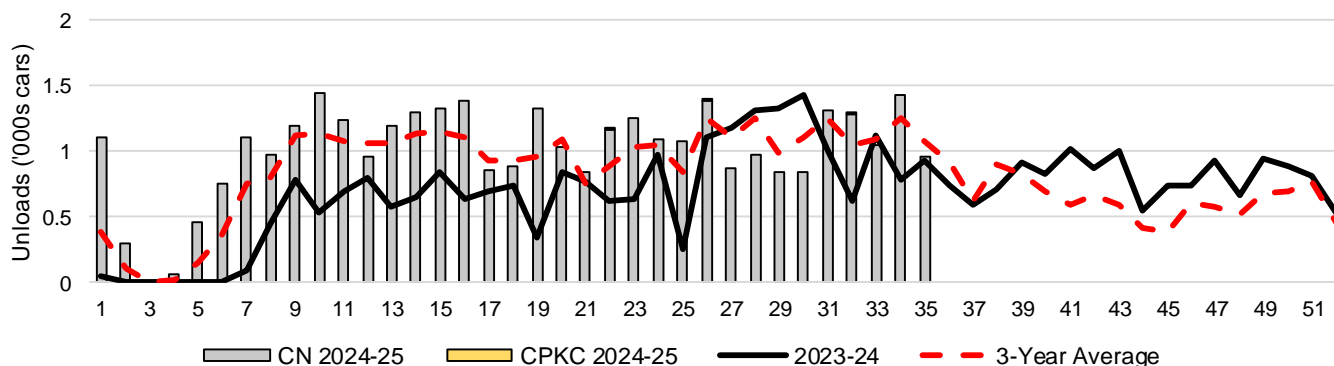
3-C Western Port Terminal Unloads (cars), Total by Carrier, This Year vs. Last Year and the 3-Year Average



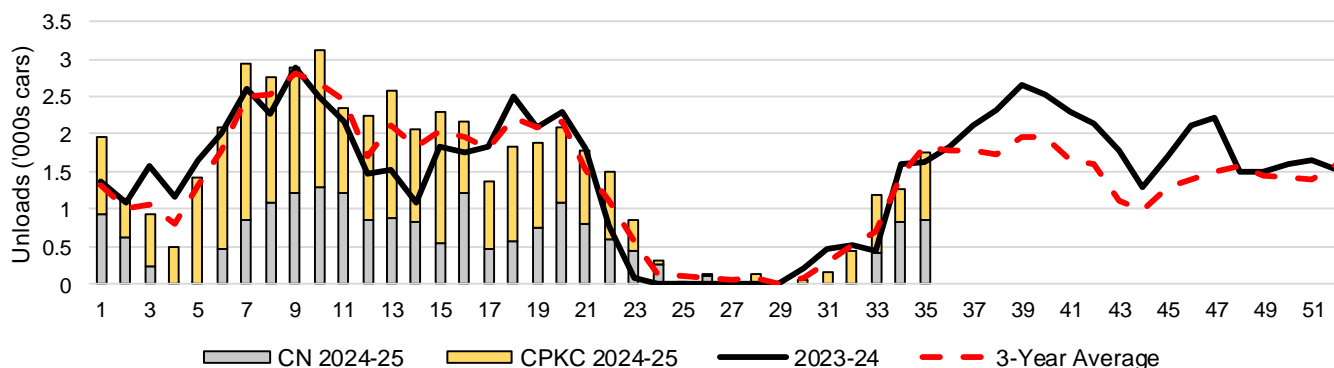
3-D Vancouver Terminal Unloads (cars), Total by Carrier, This Year vs. Last Year and the 3-Year Average



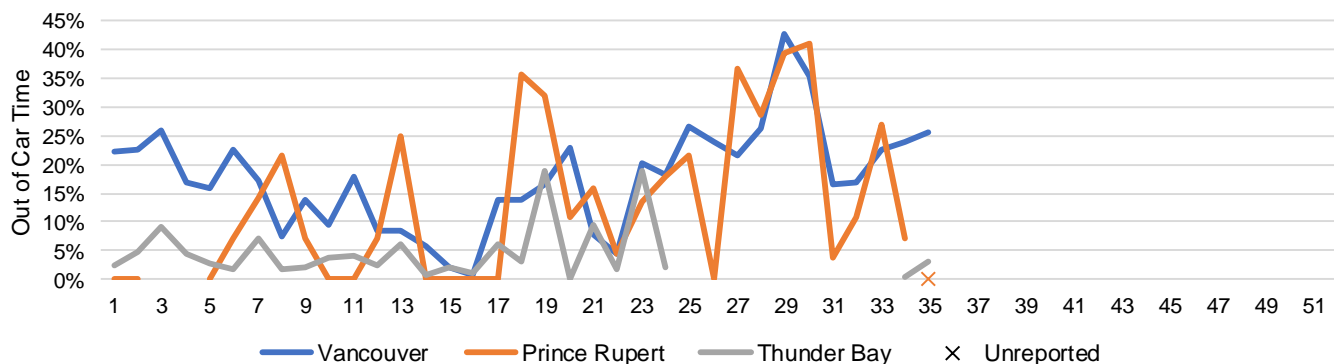
3-E Prince Rupert Terminal Unloads (cars), Total by Carrier, This Year vs. Last Year and the 3-Year Average



3-F Thunder Bay Terminal Unloads (cars), Total by Carrier, This Year vs. Last Year and the 3-Year Average



3-G Weekly Out-of-Car Time (% of hours out-of-cars / total hours working)



Out-of-car time is measured weekly and uses data from terminal elevators on the total number of hours the facilities are open & staffed (including overtime hours) and the corresponding number of hours that terminals have no railcars available to unload. The measure is expressed as a percentage (hours without cars to the total number of hours working).

3-H Monthly Unloads (cars) – This Year vs. Last Year and the 3-Year Average to Week 34 2024-25

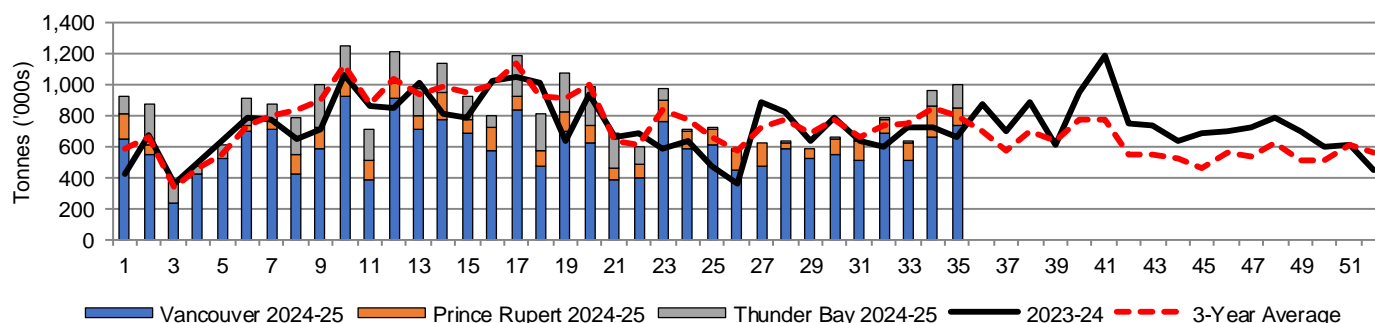
Months	Aug	Sep	Oct	Nov	Dec	Jan	Feb	Mar	Apr	May	Jun	Jul
Weeks	1-4	5-8	9-13	14-17	18-21	22-26	27-30	31-34	35-39	40-43	44-47	48-52
2024-25	28,103	37,927	55,870	41,829	33,858	38,654	25,580	34,401	-	-	-	-
2023-24	18,158	30,245	49,223	35,668	32,949	27,216	30,125	28,067	43,763	35,188	27,940	34,757
3-Yr Avg.	19,747	32,901	53,921	40,408	34,590	35,315	29,124	32,312	36,061	24,354	20,425	29,829
Var % to Last Year	55%	25%	14%	17%	3%	42%	-15%	23%				
Var % to 3-Yr Avg.	42%	15%	4%	4%	-2%	9%	-12%	6%				

4. Shipments

4-A Shipments from Port Terminals ('000 tonnes) – This Year-to-Date as at Week 35 and Variance to Last Year-to-Date

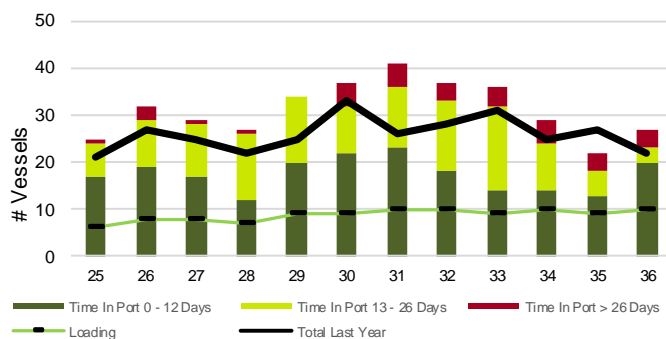
	Vancouver	Prince Rupert	West Coast	Thunder Bay	Churchill	Total
2024-25	20,773.6	3,470.1	24,243.7	4,302.2	-	28,545.9
2023-24	19,204.6	2,267.2	21,471.8	3,909.1	-	25,380.9
3-Yr Avg.	20,412.9	3,025.4	23,438.3	4,076.7	-	27,515.0
Var % to Last Year	8%	53%	13%	10%	n/a	12%
Var % to 3-Yr Avg.	2%	15%	3%	6%	n/a	4%

4-B Weekly Shipments ('000 tonnes) from Port Terminals – This Year vs Last Year and the 3-Year Average

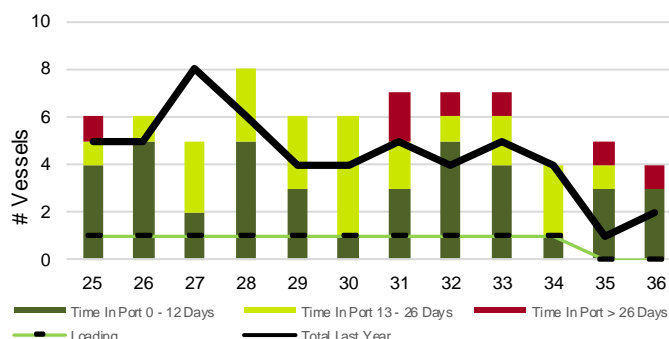


5. Vessels

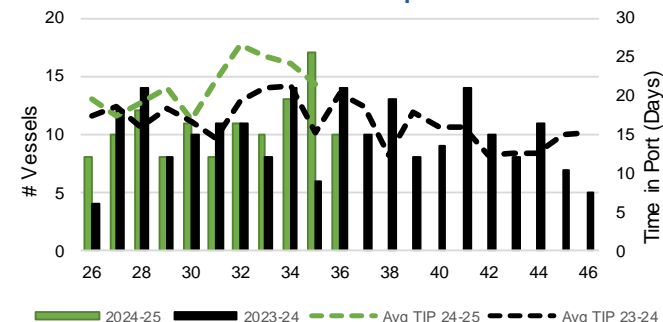
5-A Vessel Lineup at Vancouver as of Week 36 2024-25



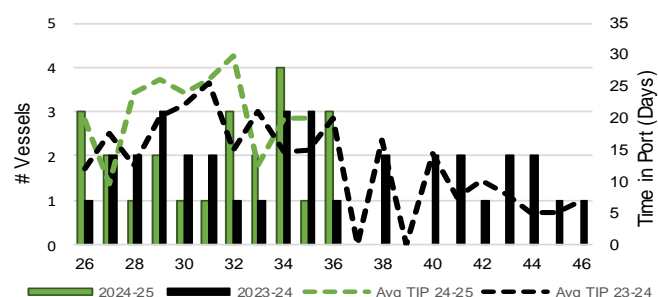
5-C Vessel Lineup at Prince Rupert as of Week 36 2024-25



5-B Vessels Cleared at Vancouver up to Week 36 2024-25



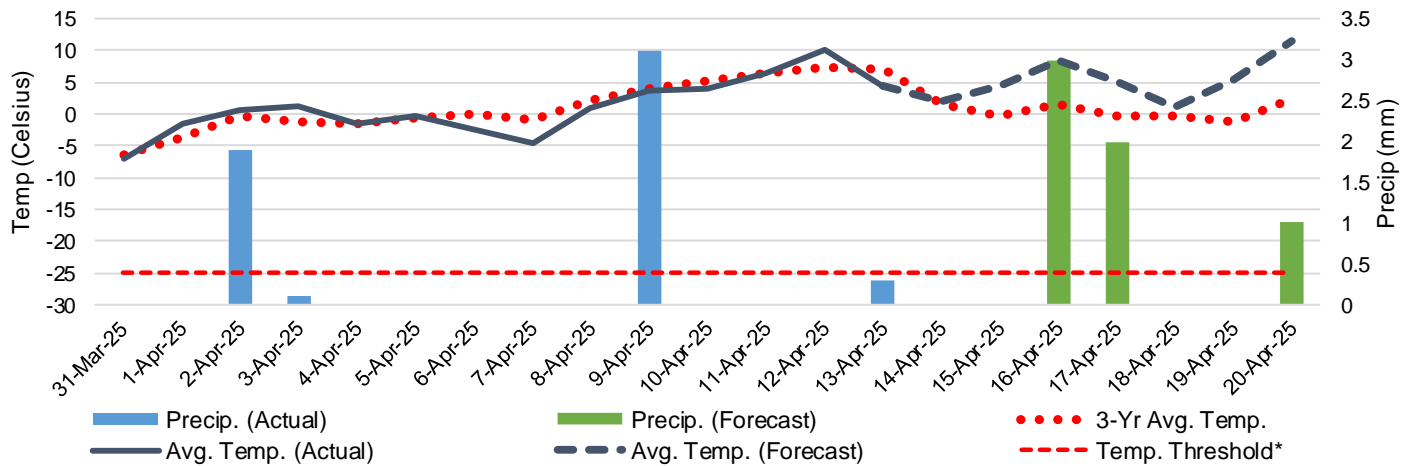
5-D Vessels Cleared at Prince Rupert up to Week 36 2024-25



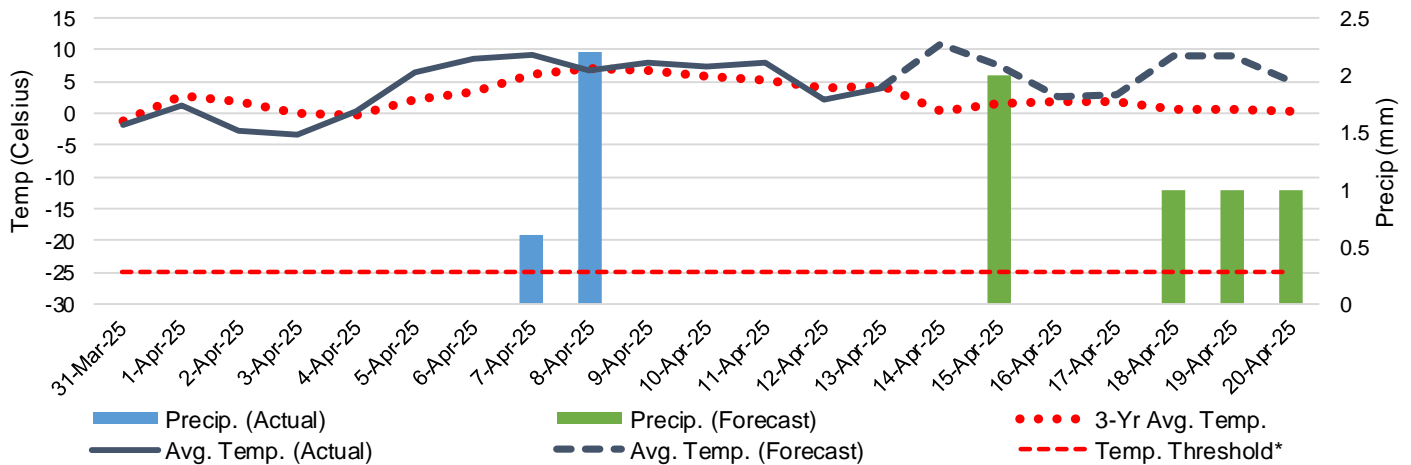
Note: The 'Time in Port' measure for 6-A and 6-C is calculated as how long each vessel in the lineup has been in port as at Sunday 23:59 of that grain week. The 'Avg Time in Port (TIP)' measure for 6-B and 6-D is the average number of days that all vessels which cleared that week were in port. These measures use vessel data provided by the BC Chamber of Shipping and Pacific Pilotage Authority.

6. Weather

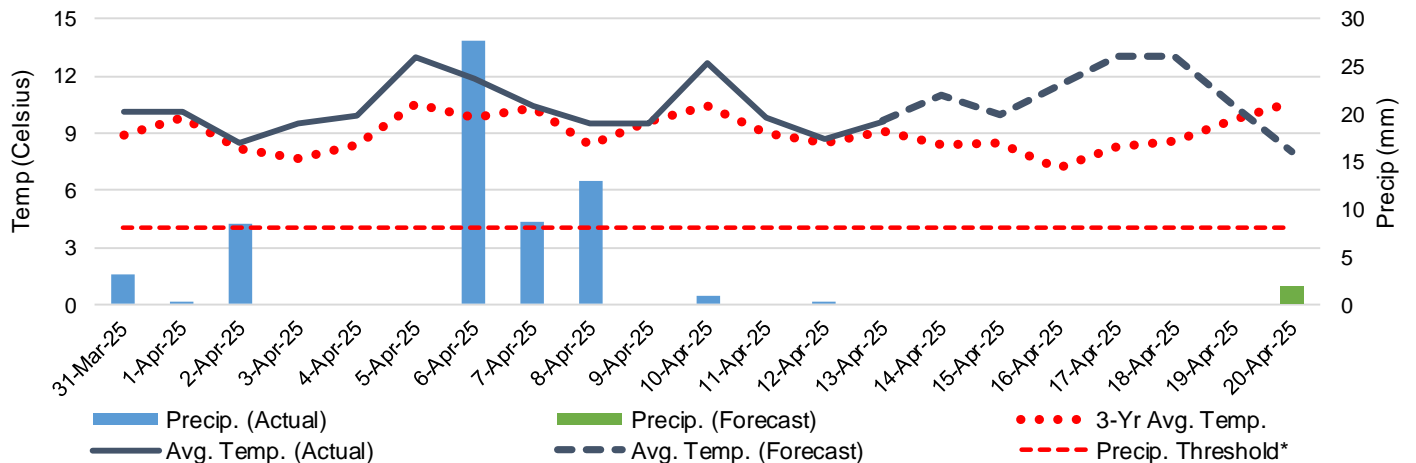
6-A Actual and Forecasted Weather at Winnipeg up to Week 37 2024-25



6-B Actual and Forecasted Weather at Edmonton up to Week 37 2024-25



6-C Actual and Forecasted Weather at Vancouver up to Week 37 2024-25



*Note: Precip Threshold refers to 8mm of rain. At this level of precipitation, vessel loading may be delayed. The duration of the delay will be dependent on the ship, the duration of rainfall, and the amount of precipitation. 8mm is a general guideline and is not meant to be a definitive limit.
Source: Environment and Climate Change Canada, The Weather Network (Forecast)