

# Grain Monitoring Program

## Weekly Performance Update

April 22, 2025

For Grain Week 36 2024-25 CY

April 07, 2025 to April 13, 2025

### Summary

	Week 36	Week 35	Var. from Last Year	
<b>1. Stocks in Store ('000 tonnes)</b>				
Country Elevators	↓ 4,314.4	4,537.2	21%	
% of Working Capacity	81%	86%		
Terminal Elevators	↑ 1,339.2	1,234.3	10%	
% of Working Capacity	70%	64%		
<b>2. Country Deliveries ('000 tonnes)</b>				
Country Deliveries	↓ 987.8	1,089.7	46%	
<b>3. Port Performance (Cars)</b>				
Vancouver Unloads	↑ 7,130	6,307	2%	
Prince Rupert Unloads	↑ 1,501	953	105%	
Churchill Unloads	— 0	0	n/a	
Thunder Bay Unloads	↑ 2,191	1,743	20%	
Total Weekly Unloads	↑ 10,822	9,003	14%	
4-Week Rolling Average	↑ 9,334	8,862	19%	
Var. to 4-Week Rolling Average	16%	2%		
YTD Unloads	316,047	305,225	18%	
Weekly Out-of-Car Time	↓ 9.2%	19.6%	-33.2%	
<b>4. Terminal Shipments Year-to-Date ('000 tonnes)</b>				
Vancouver	↑ 21,467.6	20,773.6	8%	
Prince Rupert	↑ 3,581.9	3,470.1	56%	
Churchill	— 0.0	0.0	n/a	
Thunder Bay	↑ 4,439.7	4,302.2	9%	
Total Western Canada	↑ 29,489.2	28,545.9	12%	
<b>5. Vessels as at Apr 20, 2025</b>				
	<b>Week 37</b>	<b>Week 36</b>	<b>Var. from Last Year</b>	
Vancouver	Vessel Lineup in port	↓ 26	27	13%
	Vessels Cleared	— 10	10	0%
	Vessels Arrived	↓ 9	15	-18%
Pr. Rupert	Vessel Lineup in port	↓ 3	4	50%
	Vessels Cleared	↓ 2	3	n/a
	Vessels Arrived	↓ 1	2	n/a
<b>Vessels Inbound Apr 21, 2025 to Apr 27, 2025 (Week 38)</b>				
Vancouver	12			
Prince Rupert	4			

### 1. Stocks in Store: (Page 2)

- Country stocks decreased to 4.31 MMT in Week 36 utilizing 81% of the system's working capacity. Space in primary elevators is good.
- Total western port terminal stocks increased to 1.34 MMT in Week 36, utilizing 70% of the working capacity.

### 2. Country Deliveries: (Page 3)

- Deliveries to primary elevators were 0.99 MMT in Week 36.
- Axle Weight Restrictions (road bans) are in effect across the prairies.

### 3. Port Performance: (Pages 3-5)

- Total western port unloads were 16% higher than the 4-week moving average and 14% higher than Week 36 last year.
- West Coast unloads were 8,631 cars (Vancouver 7,130 and Prince Rupert 1,501), 12% higher than the 4-week moving average and 12% higher than Week 36 last year.
- Thunder Bay had 2,191 unloads, 37% higher than the 4-week moving average and 20% higher than Week 36 last year.
- The total average terminal out-of-car time (OCT) decreased to 9.2% from 19.6% the previous week. The OCT for Week 36 was 11.3% at Vancouver and 0.6% at Thunder Bay. At the time of publishing, Prince Rupert had not yet reported Week 36 OCT.

### 4. Shipments: (Page 5)

- Year-to-date Western Canadian shipments from port terminal elevators at Week 36 are 12% higher than the same period last year and 4% higher than the 3-year average.

### 5. Vessels: (Page 5)

- Vancouver vessel lineup for Week 37 2024-25 decreased to 26 vessels (The current one-year average at Vancouver is 24 vessels). Of the 26, 8 were at berth, 7 were anchored at English Bay, 2 were anchored at Burrard Inlet, and 9 were anchored at Vancouver Island.
- Prince Rupert vessel lineup for Week 37 2024-25 decreased to 3 vessels (The current one-year average at Prince Rupert is 4 vessels).
- Vessels cleared from Vancouver was 10 and from Prince Rupert was 2 in Week 37 2024-25.

### 6. Weather: (Page 6)

- The weather section has been removed from the GMP Weekly Performance Update, to be added back in the autumn.

# 1. Stocks in Store

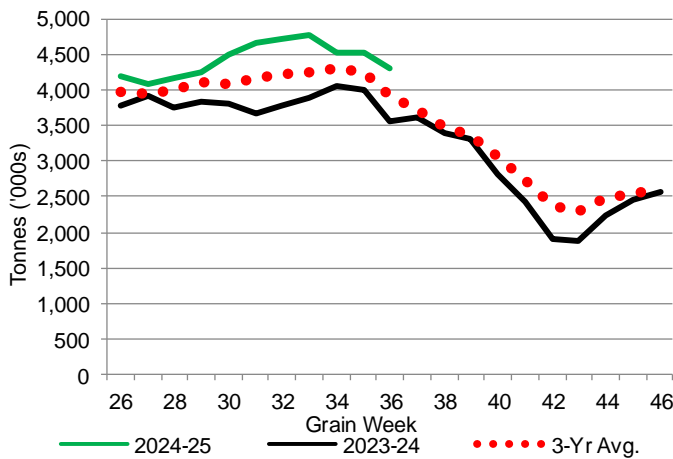
1-A1 Country Stocks ('000 tonnes) – Week 36

	MB	SK	AB	BC	Total
2024-25	838.0	2,197.9	1,266.0	12.5	4,314.4
2023-24	742.6	1,764.8	1,040.1	19.5	3,567.0
3-Yr Avg.	764.0	1,953.2	1,185.8	17.4	3,920.4
Var % - LY	13%	25%	22%	-36%	21%
Var % 3-Yr Avg.	10%	13%	7%	-28%	10%
Storage Capacity	1,626.7	3,989.3	2,508.3	32.1	8,156.4
Estimated Working Capacity	1,057.3	2,593.0	1,630.4	20.9	5,301.6
24-25 % of Wkg Cap	79%	85%	78%	60%	81%

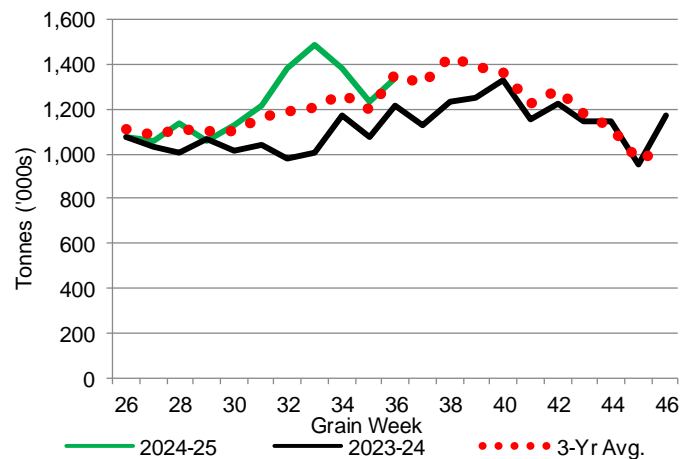
1-B1 Terminal Stocks ('000 tonnes) – Week 36

	VC	PR	West Coast	CH	TB	Total
2024-25	713.8	118.8	832.6	0.7	505.9	1,339.2
2023-24	659.9	90.7	750.6	0.7	466.9	1,218.2
3-Yr Avg.	697.6	124.8	822.4	0.7	532.3	1,355.4
Var % - LY	8%	31%	11%	0%	8%	10%
Var % 3-Yr Avg.	2%	-5%	1%	0%	-5%	-1%
Storage Capacity	1,275.5	209.5	1,485.0	140.0	1,127.5	2,752.5
Estimated Working Capacity	892.9	146.7	1,039.6	98.0	789.2	1,926.8
24-25 % of Wkg Cap	80%	81%	80%	1%	64%	70%

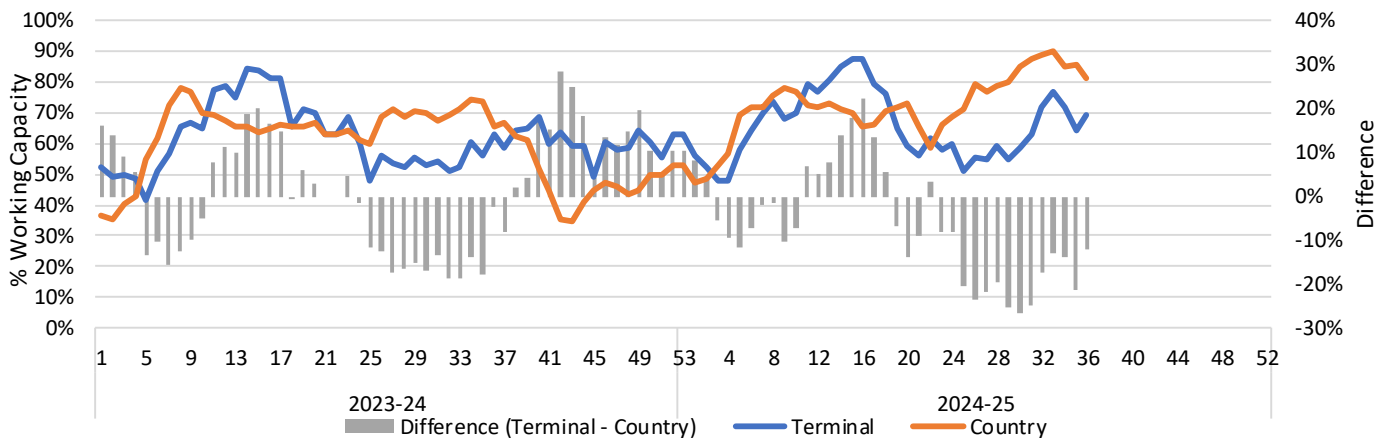
1-A2 Weekly Country Stocks in Store



1-B2 Weekly Terminal Stocks in Store



1-C Weekly Stock Balance

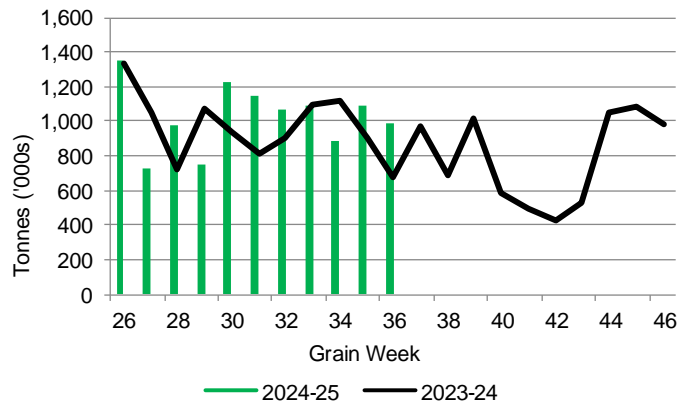


## 2. Country Deliveries

2-A Country Deliveries ('000 tonnes) – Week 36

	MB	SK	AB	BC	Total
2024-25	188.5	485.6	307.5	6.2	987.8
2023-24	168.7	279.8	223.8	4.0	676.3
4 Wk Avg	157.8	526.9	324.9	5.4	1,014.9
Var % to Last Year	12%	74%	37%	55%	46%
Var % To 4 Wk Avg	20%	-8%	-5%	15%	-3%

2-B 2024-25 Weekly Country Deliveries



## 3. Port Performance

3-A Weekly Unloads by Port (Cars) – This Year for Week 36, 4-Week Moving Average and Variances

	Vancouver	Prince Rupert	West Coast	Thunder Bay	Churchill	Total
2024-25	7,130	1,501	8,631	2,191	-	10,822
2023-24	6,980	732	7,712	1,820	n/a	9,532
4-Wk Avg.	6,500	1,235	7,735	1,599	-	9,334
Var % to Last Year	2%	105%	12%	20%	n/a	14%
Var % to 4-Wk Avg.	10%	22%	12%	37%	n/a	16%

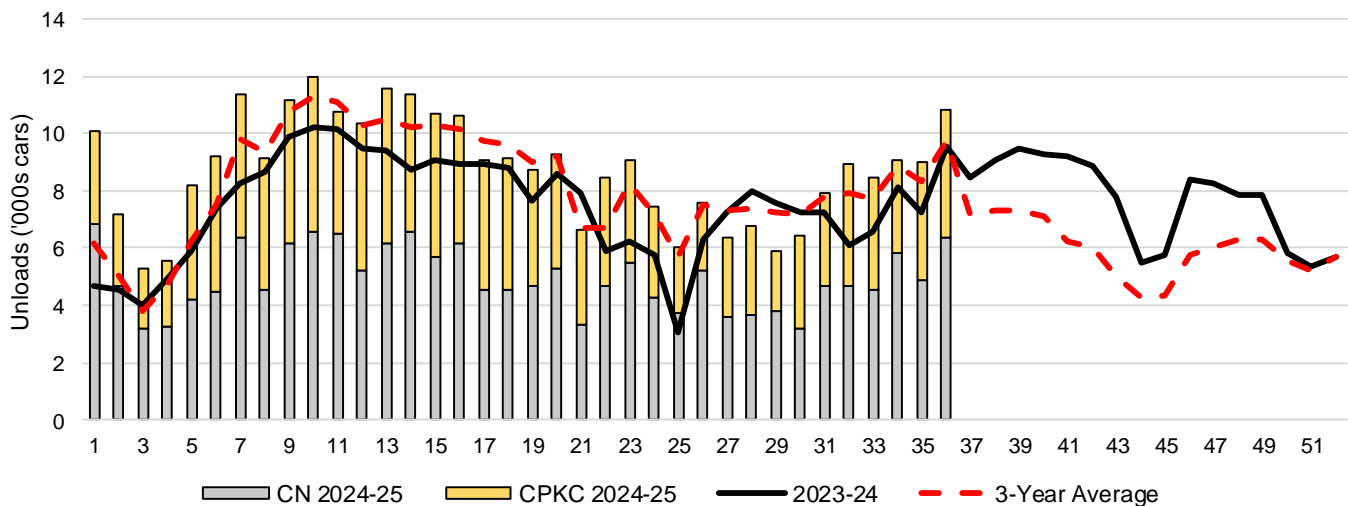
3-B Terminal Unloads by Port – This Year-to-Date as at Week 36 and Variances

YTD Unloads (cars)	Vancouver	Prince Rupert	West Coast	Thunder Bay	Churchill	Total
2024-25	226,899	36,773	263,672	52,375	-	316,047
2023-24	197,848	23,561	221,409	47,009	-	268,418
3-Yr Avg	215,123	32,396	247,519	48,865	-	296,384
Var % to Last Year	15%	56%	19%	11%	n/a	18%
Var % to 3-Yr Avg	5%	14%	7%	7%	n/a	7%

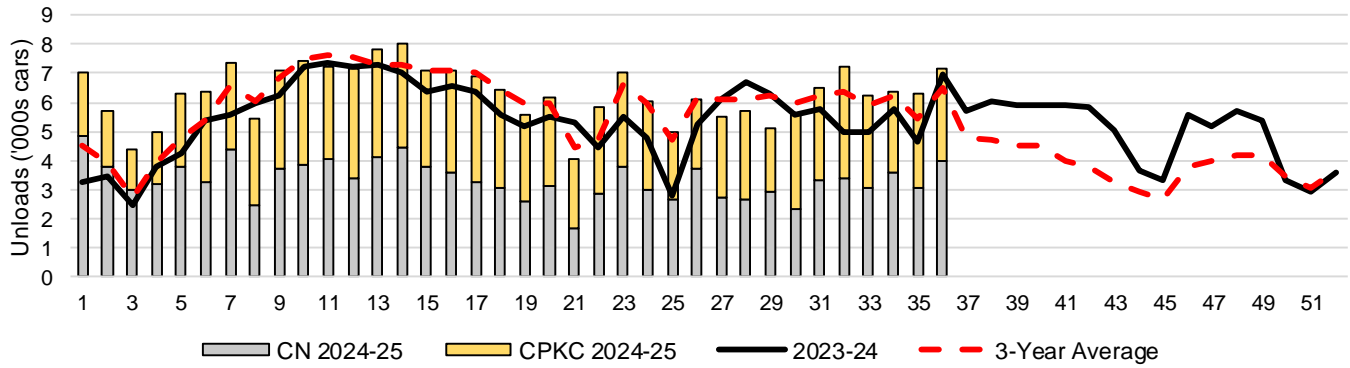
  

YTD Unloads ('000 tonnes)	Vancouver	Prince Rupert	West Coast	Thunder Bay	Churchill	Total
2024-25	21,555.8	3,551.9	25,107.7	5,055.8	-	30,163.5
2023-24	19,144.3	2,286.2	21,430.5	4,544.6	-	25,975.1
3-Yr Avg.	20,643.9	3,127.6	23,771.5	4,714.6	-	28,486.0
Var % to Last Year	13%	55%	17%	11%	n/a	16%
Var % to 3-Yr Avg.	4%	14%	6%	7%	n/a	6%

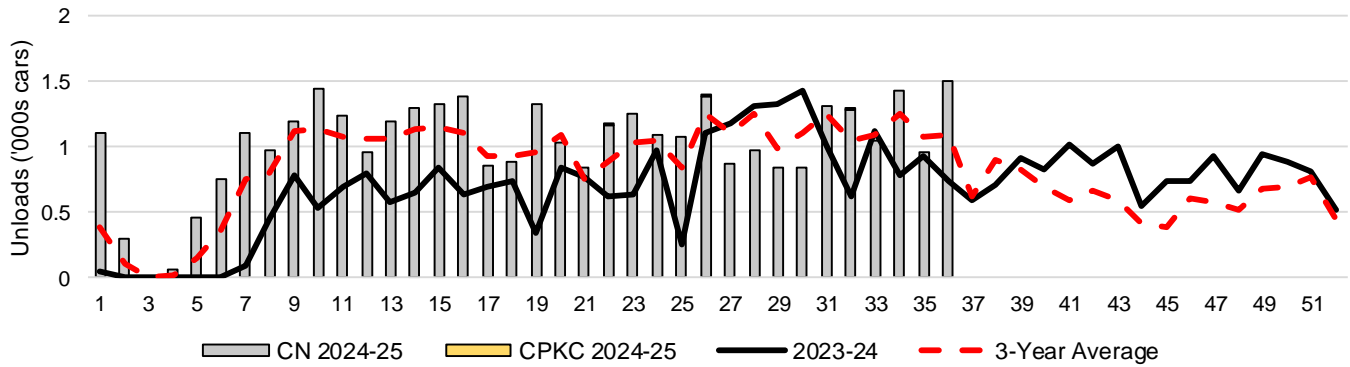
3-C Western Port Terminal Unloads (cars), Total by Carrier, This Year vs. Last Year and the 3-Year Average



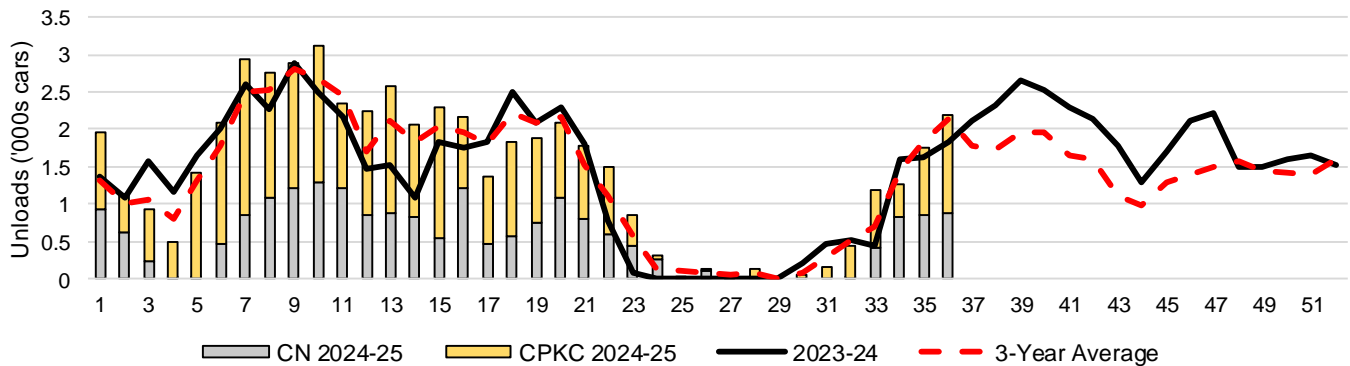
### 3-D Vancouver Terminal Unloads (cars), Total by Carrier, This Year vs. Last Year and the 3-Year Average



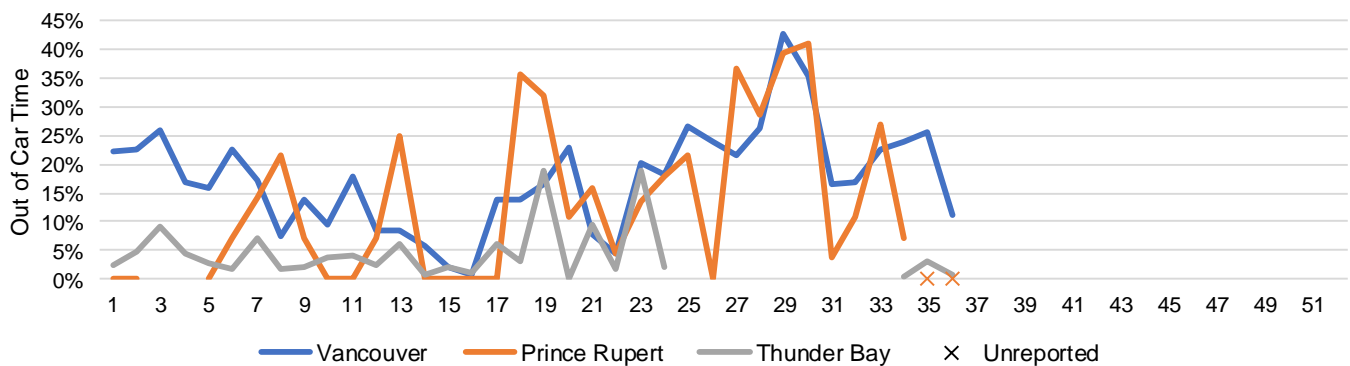
### 3-E Prince Rupert Terminal Unloads (cars), Total by Carrier, This Year vs. Last Year and the 3-Year Average



### 3-F Thunder Bay Terminal Unloads (cars), Total by Carrier, This Year vs. Last Year and the 3-Year Average



### 3-G Weekly Out-of-Car Time (% of hours out-of-cars / total hours working)



Out-of-car time is measured weekly and uses data from terminal elevators on the total number of hours the facilities are open & staffed (including overtime hours) and the corresponding number of hours that terminals have no railcars available to unload. The measure is expressed as a percentage (hours without cars to the total number of hours working).

### 3-H Monthly Unloads (cars) – This Year vs. Last Year and the 3-Year Average to Week 34 2024-25

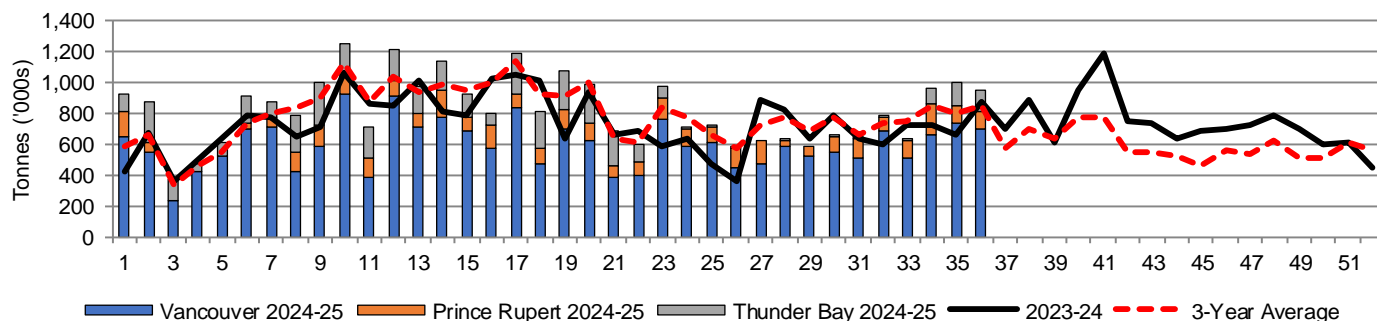
Months	Aug	Sep	Oct	Nov	Dec	Jan	Feb	Mar	Apr	May	Jun	Jul
Weeks	1-4	5-8	9-13	14-17	18-21	22-26	27-30	31-34	35-39	40-43	44-47	48-52
2024-25	28,103	37,927	55,870	41,829	33,858	38,654	25,580	34,401	-	-	-	-
2023-24	18,158	30,245	49,223	35,668	32,949	27,216	30,125	28,067	43,763	35,188	27,940	34,684
3-Yr Avg.	19,747	32,901	53,921	40,408	34,590	35,315	29,124	32,312	36,061	24,354	20,425	29,805
Var % to Last Year	55%	25%	14%	17%	3%	42%	-15%	23%				
Var % to 3-Yr Avg.	42%	15%	4%	4%	-2%	9%	-12%	6%				

## 4. Shipments

### 4-A Shipments from Port Terminals ('000 tonnes) – This Year-to-Date as at Week 36 and Variance to Last Year-to-Date

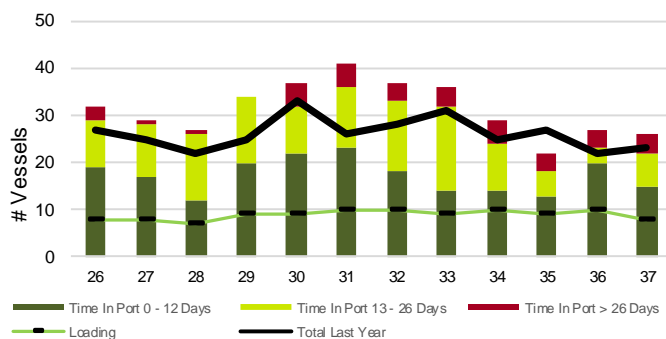
	Vancouver	Prince Rupert	West Coast	Thunder Bay	Churchill	Total	
2024-25	21,467.6	3,581.9	25,049.5	4,439.7	-	29,489.2	
2023-24	19,893.9	2,299.2	22,193.1	4,058.3	-	26,251.4	
3-Yr Avg.	21,028.3	3,112.3	24,140.6	4,225.8	-	28,366.4	
Var % to Last Year		8%	56%	13%	9%	n/a	12%
Var % to 3-Yr Avg.		2%	15%	4%	5%	n/a	4%

### 4-B Weekly Shipments ('000 tonnes) from Port Terminals – This Year vs Last Year and the 3-Year Average

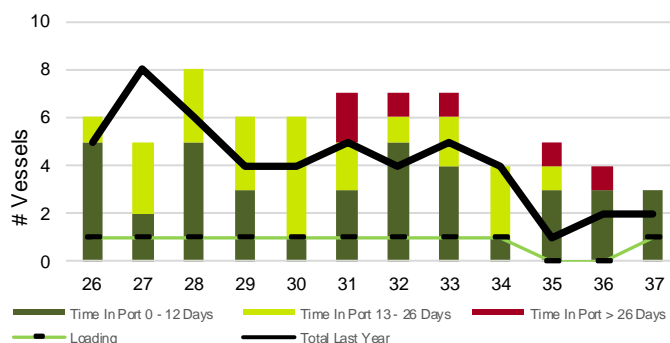


## 5. Vessels

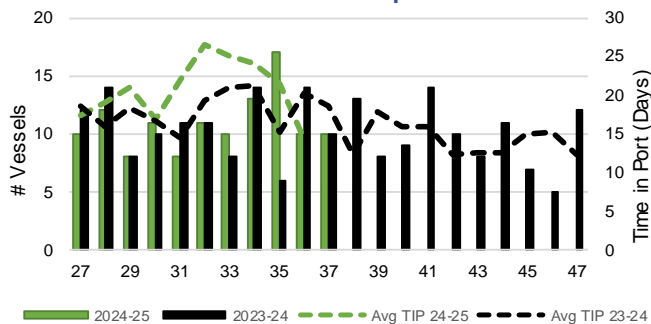
### 5-A Vessel Lineup at Vancouver as of Week 37 2024-25



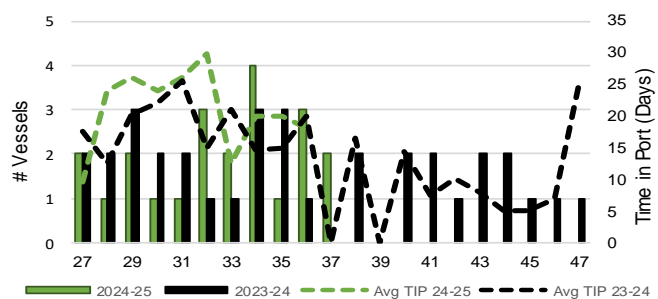
### 5-C Vessel Lineup at Prince Rupert as of Week 37 2024-25



### 5-B Vessels Cleared at Vancouver up to Week 37 2024-25



### 5-D Vessels Cleared at Prince Rupert up to Week 37 2024-25



Note: The 'Time in Port' measure for 6-A and 6-C is calculated as how long each vessel in the lineup has been in port as at Sunday 23:59 of that grain week. The 'Avg Time in Port (TIP)' measure for 6-B and 6-D is the average number of days that all vessels which cleared that week were in port. These measures use vessel data provided by the BC Chamber of Shipping and Pacific Pilotage Authority.