

# Grain Monitoring Program

## Weekly Performance Update

May 06, 2025

For Grain Week 38 2024-25 CY  
April 21, 2025 to April 27, 2025

### Summary

Summary		Week 38	Week 37	Var. from Last Year	
1. Stocks in Store ('000 tonnes)					
Country Elevators	↓	3,802.8	4,058.9	12%	
% of Working Capacity		72%	77%		
Terminal Elevators	↑	1,415.0	1,399.8	15%	
% of Working Capacity		73%	73%		
2. Country Deliveries ('000 tonnes)					
Country Deliveries	↑	968.2	952.7	42%	
3. Port Performance (Cars)					
Vancouver Unloads	↑	7,923	5,543	31%	
Prince Rupert Unloads	↓	1,084	1,271	53%	
Churchill Unloads	—	0	0	n/a	
Thunder Bay Unloads	↑	2,731	2,656	18%	
Total Weekly Unloads	↑	11,738	9,470	30%	
4-Week Rolling Average	↑	10,258	9,591	20%	
Var. to 4-Week Rolling Average		14%	-1%		
YTD Unloads		337,255	325,517	18%	
Weekly Out-of-Car Time	↑	9.2%	9.0%	-35.1%	
4. Terminal Shipments Year-to-Date ('000 tonnes)					
Vancouver	↑	22,582.2	21,956.4	8%	
Prince Rupert	↑	3,822.3	3,691.9	60%	
Churchill	—	0.0	0.0	n/a	
Thunder Bay	↑	4,871.2	4,671.9	8%	
Total Western Canada	↑	31,275.7	30,320.2	12%	
5. Vessels as at May 4, 2025		Week 39	Week 38	Var. from Last Year	
Vancouver	Vessel Lineup in port	↓	25	26	14%
	Vessels Cleared	↓	13	14	63%
	Vessels Arrived	↓	12	13	9%
Pr. Rupert	Vessel Lineup in port	↑	4	3	100%
	Vessels Cleared	—	2	2	n/a
	Vessels Arrived	↑	3	2	n/a
Vessels Inbound May 05, 2025 to May 11, 2025 (Week 40)					
Vancouver		11			
Prince Rupert		5			

### 1. Stocks in Store: (Page 2)

- Country stocks decreased to 3.80 MMT in Week 38 utilizing 72% of the system's working capacity. Space in primary elevators is good.
- Total western port terminal stocks increased to 1.42 MMT in Week 38, utilizing 73% of the working capacity.

### 2. Country Deliveries: (Page 3)

- Deliveries to primary elevators were 0.97 MMT in Week 38.
- Axle Weight Restrictions (road bans) are in effect across the prairies.

### 3. Port Performance: (Pages 3-5)

- Total western port unloads were 14% higher than the 4-week moving average and 30% higher than Week 38 last year.
- West Coast unloads were 9,007 cars (Vancouver 7,923 and Prince Rupert 1,084), 14% higher than the 4-week moving average and 33% higher than Week 38 last year.
- Thunder Bay had 2,731 unloads, 17% higher than the 4-week moving average and 18% higher than Week 38 last year.
- The total average terminal out-of-car time (OCT) increased to 9.2% from 9.0% the previous week. The OCT for Week 38 was 10.2% at Vancouver and 6.6% at Thunder Bay. At the time of publishing, Prince Rupert had not yet reported Week 38 OCT.

### 4. Shipments: (Page 5)

- Year-to-date Western Canadian shipments from port terminal elevators at Week 38 are 12% higher than the same period last year and 4% higher than the 3-year average.

### 5. Vessels: (Page 5)

- Vancouver vessel lineup for Week 39 2024-25 decreased to 25 vessels (The current one-year average at Vancouver is 24 vessels). Of the 25, 7 were at berth, 10 were anchored at English Bay, 1 was anchored at Burrard Inlet, and 7 were anchored at Vancouver Island.
- Prince Rupert vessel lineup for Week 39 2024-25 increased to 4 vessels (The current one-year average at Prince Rupert is 4 vessels).
- Vessels cleared from Vancouver was 13 and from Prince Rupert was 2 in Week 39 2024-25.

# 1. Stocks in Store

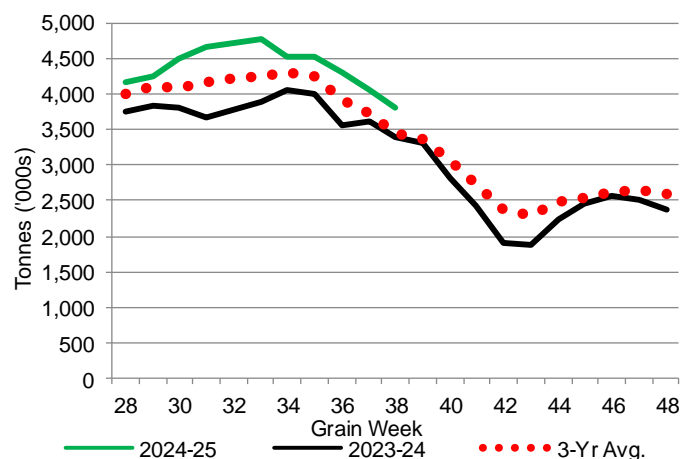
1-A1 Country Stocks ('000 tonnes) – Week 38

	MB	SK	AB	BC	Total
2024-25	764.9	1,914.9	1,105.7	17.3	3,802.8
2023-24	689.3	1,666.8	1,014.7	16.0	3,386.8
3-Yr Avg.	706.1	1,650.4	1,077.3	19.2	3,453.1
Var % - LY	11%	15%	9%	8%	12%
Var % 3-Yr Avg.	8%	16%	3%	-10%	10%
Storage Capacity	1,628.8	3,986.1	2,508.2	32.1	8,155.2
Estimated Working Capacity	1,058.7	2,590.9	1,630.3	20.9	5,300.8
24-25 % of Wkg Cap	72%	74%	68%	83%	72%

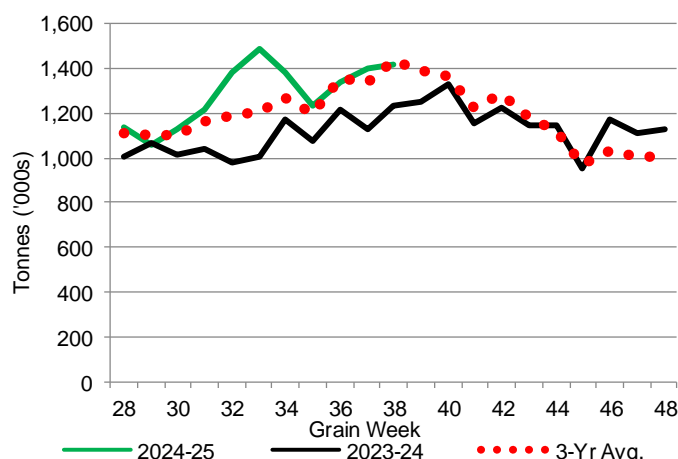
1-B1 Terminal Stocks ('000 tonnes) – Week 38

	VC	PR	West Coast	CH	TB	Total
2024-25	735.4	135.4	870.8	0.7	543.5	1,415.0
2023-24	672.1	98.0	770.1	0.7	463.7	1,234.5
3-Yr Avg.	750.4	121.2	871.6	0.7	565.0	1,437.3
Var % - LY	9%	38%	13%	0%	17%	15%
Var % 3-Yr Avg.	-2%	12%	0%	0%	-4%	-2%
Storage Capacity	1,275.5	209.5	1,485.0	140.0	1,127.5	2,752.5
Estimated Working Capacity	892.9	146.7	1,039.6	98.0	789.2	1,926.8
24-25 % of Wkg Cap	82%	92%	84%	1%	69%	73%

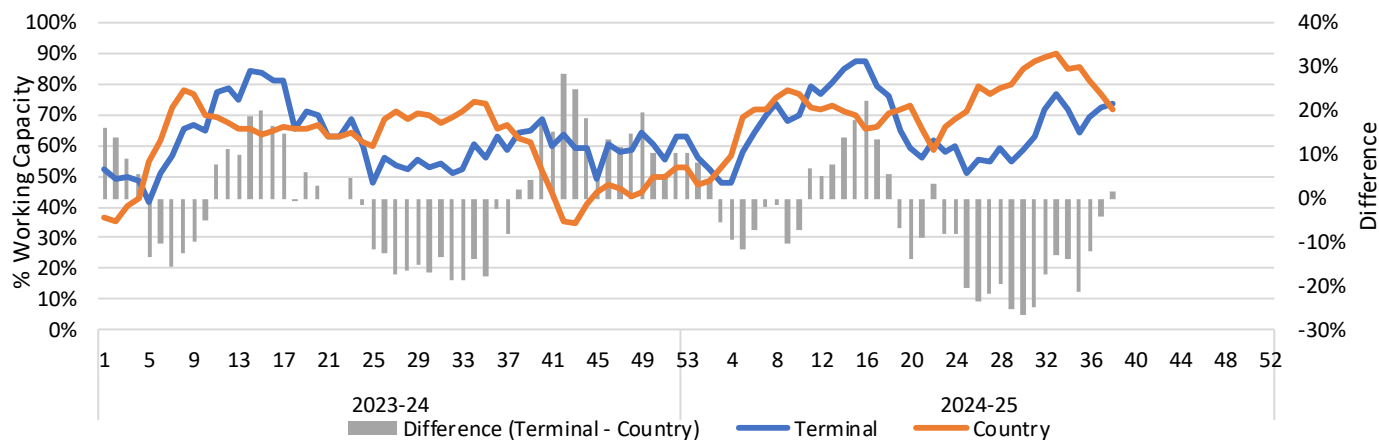
1-A2 Weekly Country Stocks in Store



1-B2 Weekly Terminal Stocks in Store



1-C Weekly Stock Balance

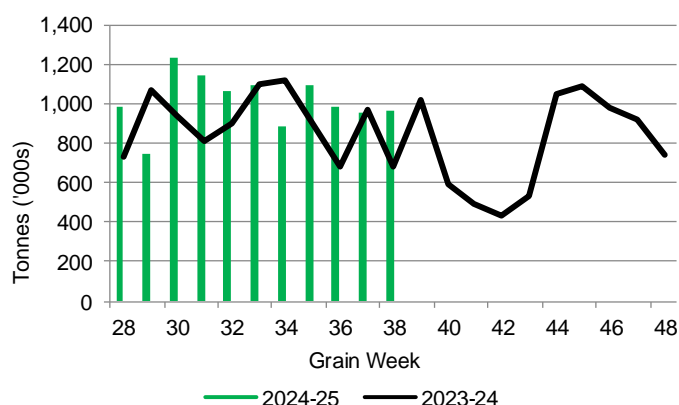


## 2. Country Deliveries

2-A Country Deliveries ('000 tonnes) – Week 38

	MB	SK	AB	BC	Total
2024-25	168.8	463.2	330.4	5.8	968.2
2023-24	98.8	296.0	284.6	4.5	683.9
4 Wk Avg	166.4	503.9	323.7	5.7	999.6
Var % to Last Year	71%	57%	16%	29%	42%
Var % To 4 Wk Avg	1%	-8%	2%	2%	-3%

2-B 2024-25 Weekly Country Deliveries



## 3. Port Performance

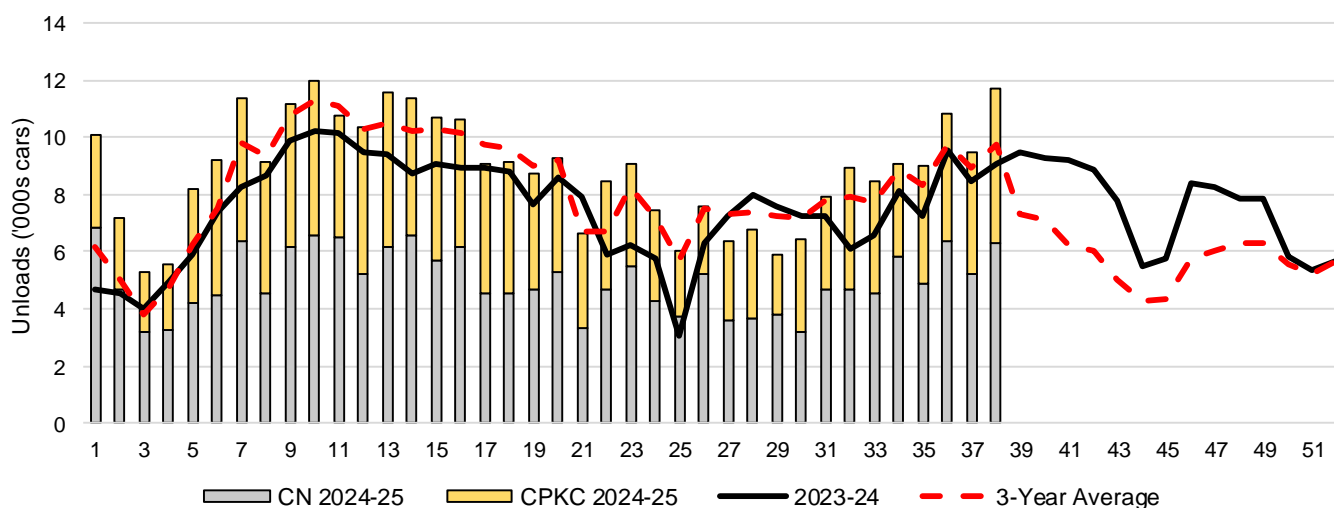
3-A Weekly Unloads by Port (Cars) – This Year for Week 38, 4-Week Moving Average and Variances

	Vancouver	Prince Rupert	West Coast	Thunder Bay	Churchill	Total
2024-25	7,923	1,084	9,007	2,731	-	11,738
2023-24	6,044	707	6,751	2,311	n/a	9,062
4-Wk Avg.	6,726	1,202	7,928	2,330	-	10,258
Var % to Last Year	31%	53%	33%	18%	n/a	30%
Var % to 4-Wk Avg.	18%	-10%	14%	17%	n/a	14%

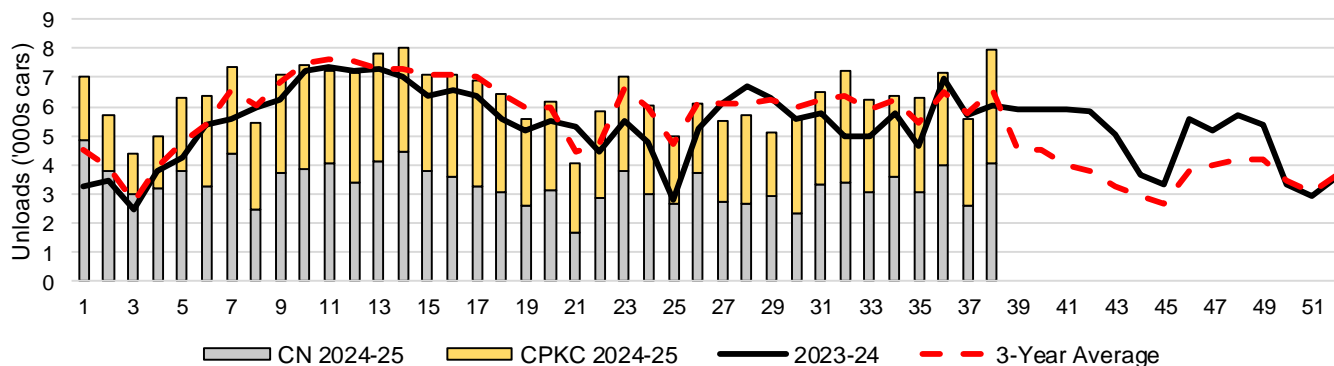
3-B Terminal Unloads by Port – This Year-to-Date as at Week 38 and Variances

YTD Unloads (cars)	Vancouver	Prince Rupert	West Coast	Thunder Bay	Churchill	Total
2024-25	240,365	39,128	279,493	57,762	-	337,255
2023-24	209,623	24,866	234,489	51,439	-	285,928
3-Yr Avg	227,413	34,324	261,737	53,357	-	315,094
Var % to Last Year	15%	57%	19%	12%	n/a	18%
Var % to 3-Yr Avg	6%	14%	7%	8%	n/a	7%
YTD Unloads ('000 tonnes)						
2024-25	22,849.1	3,780.4	26,629.5	5,579.9	-	32,209.4
2023-24	20,274.9	2,408.2	22,683.1	4,974.2	-	27,657.3
3-Yr Avg.	21,850.3	3,312.2	25,162.4	5,152.3	-	30,314.7
Var % to Last Year	13%	57%	17%	12%	n/a	16%
Var % to 3-Yr Avg.	5%	14%	6%	8%	n/a	6%

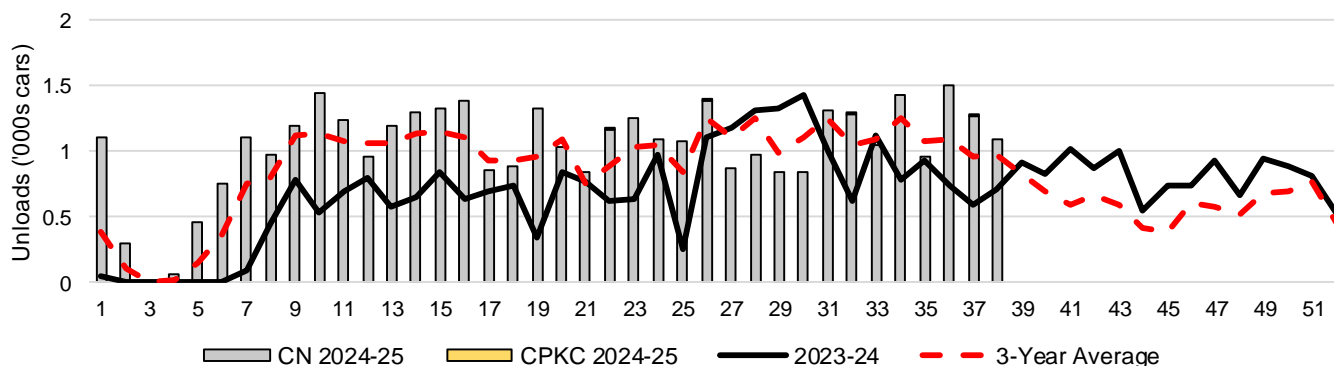
3-C Western Port Terminal Unloads (cars), Total by Carrier, This Year vs. Last Year and the 3-Year Average



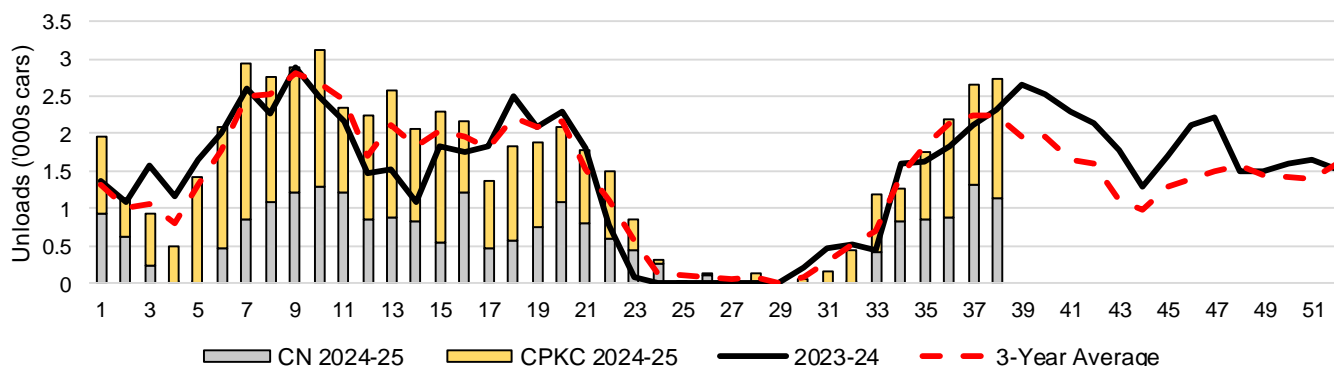
### 3-D Vancouver Terminal Unloads (cars), Total by Carrier, This Year vs. Last Year and the 3-Year Average



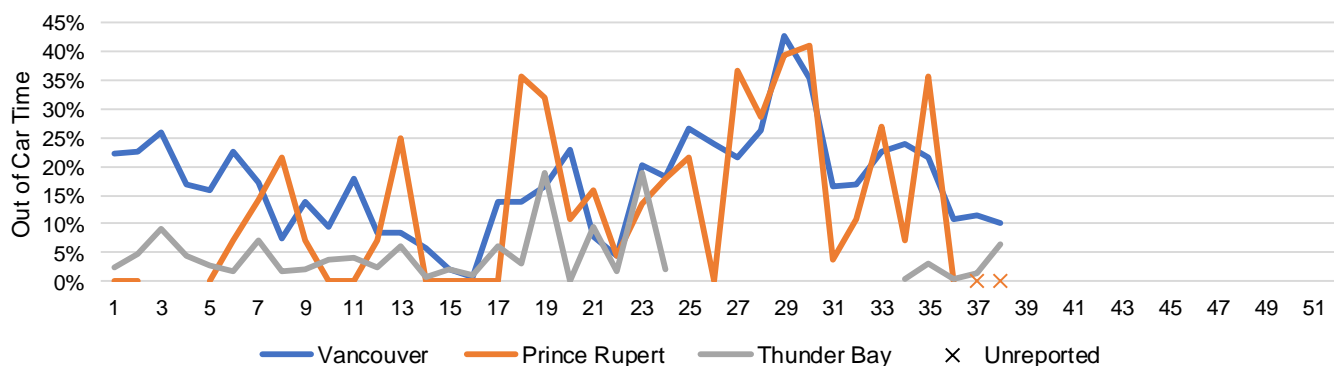
### 3-E Prince Rupert Terminal Unloads (cars), Total by Carrier, This Year vs. Last Year and the 3-Year Average



### 3-F Thunder Bay Terminal Unloads (cars), Total by Carrier, This Year vs. Last Year and the 3-Year Average



### 3-G Weekly Out-of-Car Time (% of hours out-of-cars / total hours working)



Out-of-car time is measured weekly and uses data from terminal elevators on the total number of hours the facilities are open & staffed (including overtime hours) and the corresponding number of hours that terminals have no railcars available to unload. The measure is expressed as a percentage (hours without cars to the total number of hours working).

### 3-H Monthly Unloads (cars) – This Year vs. Last Year and the 3-Year Average to Week 34 2024-25

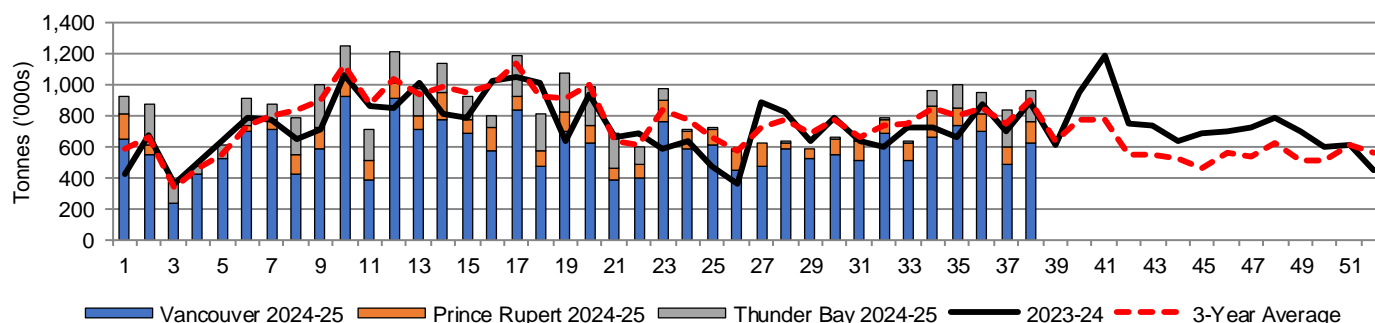
Months	Aug	Sep	Oct	Nov	Dec	Jan	Feb	Mar	Apr	May	Jun	Jul
Weeks	1-4	5-8	9-13	14-17	18-21	22-26	27-30	31-34	35-39	40-43	44-47	48-52
2024-25	28,103	37,927	55,870	41,829	33,858	38,654	25,580	34,401	-	-	-	-
2023-24	18,158	30,245	49,223	35,668	32,949	27,216	30,125	28,067	43,763	35,188	27,940	34,684
3-Yr Avg.	19,747	32,901	53,921	40,408	34,590	35,315	29,124	32,312	36,061	24,354	20,425	29,805
Var % to Last Year	55%	25%	14%	17%	3%	42%	-15%	23%				
Var % to 3-Yr Avg.	42%	15%	4%	4%	-2%	9%	-12%	6%				

## 4. Shipments

### 4-A Shipments from Port Terminals ('000 tonnes) – This Year-to-Date as at Week 38 and Variance to Last Year-to-Date

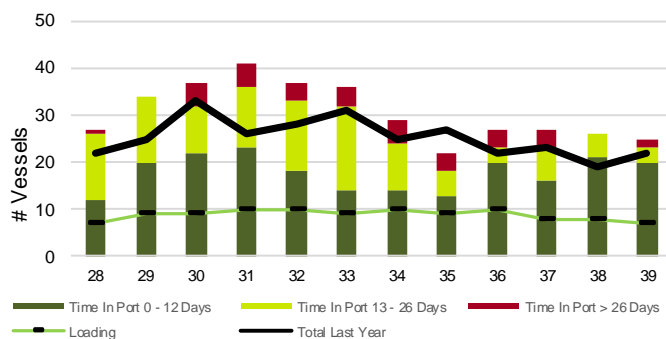
	Vancouver	Prince Rupert	West Coast	Thunder Bay	Churchill	Total
2024-25	22,582.2	3,822.3	26,404.5	4,871.2	-	31,275.7
2023-24	20,947.5	2,397.0	23,344.5	4,495.2	-	27,839.7
3-Yr Avg.	22,115.1	3,305.3	25,420.4	4,587.5	-	30,008.0
Var % to Last Year	8%	59%	13%	8%	n/a	12%
Var % to 3-Yr Avg.	2%	16%	4%	6%	n/a	4%

### 4-B Weekly Shipments ('000 tonnes) from Port Terminals – This Year vs Last Year and the 3-Year Average

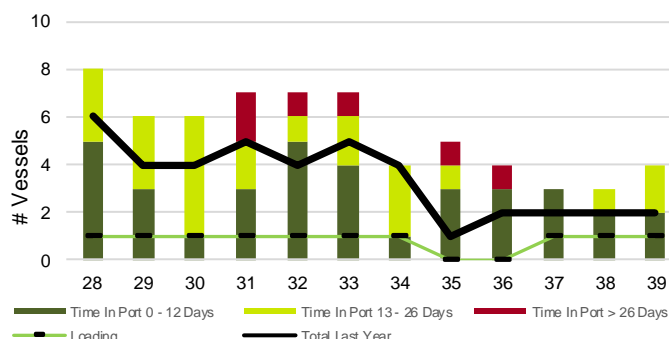


## 5. Vessels

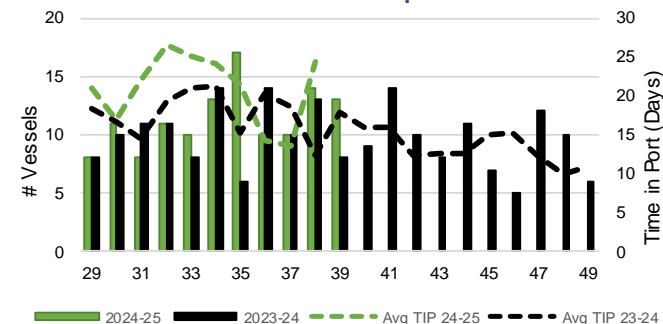
### 5-A Vessel Lineup at Vancouver as of Week 39 2024-25



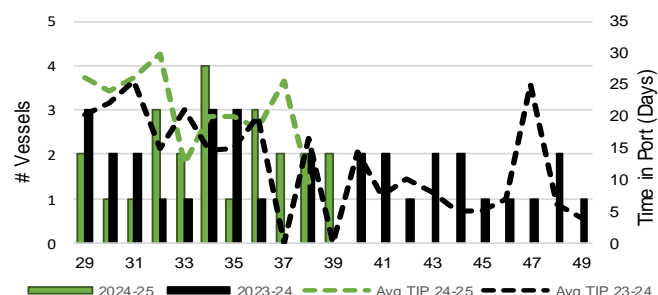
### 5-C Vessel Lineup at Prince Rupert as of Week 39 2024-25



### 5-B Vessels Cleared at Vancouver up to Week 39 2024-25



### 5-D Vessels Cleared at Prince Rupert up to Week 39 2024-25



Note: The 'Time in Port' measure for 6-A and 6-C is calculated as how long each vessel in the lineup has been in port as at Sunday 23:59 of that grain week. The 'Avg Time in Port (TIP)' measure for 6-B and 6-D is the average number of days that all vessels which cleared that week were in port. These measures use vessel data provided by the BC Chamber of Shipping and Pacific Pilotage Authority.