

# Grain Monitoring Program

## Weekly Performance Update

August 26, 2025

For Grain Week 02 2025-26 CY  
August 11, 2025 to August 17, 2025

### Summary

Summary		Week 02	Week 01	Var. from Last Year	
1. Stocks in Store ('000 tonnes)					
Country Elevators	↓	1,897.4	1,939.3	-29%	
% of Working Capacity		36%	36%		
Terminal Elevators	↓	1,035.3	1,111.4	2%	
% of Working Capacity		54%	58%		
2. Country Deliveries ('000 tonnes)					
Country Deliveries	↑	401.8	352.5	-50%	
3. Port Performance (Cars)					
Vancouver Unloads	↓	3,599	4,993	-37%	
Prince Rupert Unloads	↓	110	400	-63%	
Churchill Unloads	—	0	0	n/a	
Thunder Bay Unloads	↓	877	1,948	-22%	
Total Weekly Unloads	↓	4,586	7,341	-36%	
4-Week Rolling Average	↓	5,004	5,566	-20%	
Var. to 4-Week Rolling Average		-8%	32%		
YTD Unloads		11,927	7,341	-31%	
Weekly Out-of-Car Time	↓	3.3%	8.4%	-80.1%	
4. Terminal Shipments Year-to-Date ('000 tonnes)					
Vancouver	↑	1,374.0	952.6	15%	
Prince Rupert	↑	106.3	0.0	-52%	
Churchill	—	0.0	0.0	n/a	
Thunder Bay	↑	285.9	170.2	-24%	
Total Western Canada	↑	1,766.2	1,122.8	-1%	
5. Vessels as at Aug 24, 2025		Week 03	Week 02	Var. from Last Year	
Vancouver	Vessel Lineup in port	—	6	6	-63%
	Vessels Cleared	↓	5	8	25%
	Vessels Arrived	—	5	5	-17%
Pr. Rupert	Vessel Lineup in port	—	0	0	n/a
	Vessels Cleared	↓	0	2	n/a
	Vessels Arrived	—	0	0	n/a
Vessels Inbound Aug 25, 2025 to Aug 31, 2025 (Week 04)					
Vancouver		11			
Prince Rupert		0			

### 1. Stocks in Store: (Page 2)

- Country stocks decreased to 1.90 MMT in Week 02 utilizing 36% of the system's working capacity. Space in primary elevators is good.
- Total western port terminal stocks decreased to 1.04 MMT in Week 02, utilizing 54% of the working capacity.

### 2. Country Deliveries: (Page 3)

- Deliveries to primary elevators were 0.40 MMT in Week 02.

### 3. Port Performance: (Pages 3-5)

- Total western port unloads were 8% lower than the 4-week moving average and 36% lower than Week 02 last year.
- West Coast unloads were 3,709 cars (Vancouver 3,599 and Prince Rupert 110), 2% higher than the 4-week moving average and 38% lower than Week 02 last year.
- Thunder Bay had 877 unloads, 36% lower than the 4-week moving average and 22% lower than Week 02 last year.
- The total average terminal out-of-car time (OCT) decreased to 3.3% from 8.4% the previous week. The OCT for Week 02 was 2.3% at Vancouver, 0.0% at Prince Rupert and 7.5% at Thunder Bay.

### 4. Shipments: (Page 5)

- Year-to-date Western Canadian shipments from port terminal elevators at Week 02 are 1% lower than the same period last year and 14% higher than the 3-year average.

### 5. Vessels: (Page 5)

- Vancouver vessel lineup for Week 03 2025-26 remained at 6 vessels (The current one-year average at Vancouver is 24 vessels). Of the 6, 3 were at berth and 3 were anchored at English Bay.
- Prince Rupert vessel lineup for Week 03 2025-26 remained at 0 vessels (The current one-year average at Prince Rupert is 4 vessels).
- Vessels cleared from Vancouver was 5 and from Prince Rupert was 0 in Week 03 2025-26.

# 1. Stocks in Store

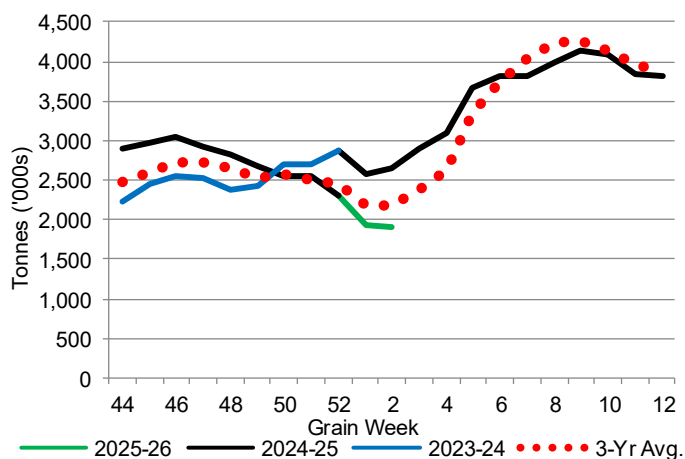
1-A1 Country Stocks ('000 tonnes) – Week 02

	MB	SK	AB	BC	Total
2025-26	427.9	947.4	511.9	10.2	1,897.4
2024-25	564.4	1,251.7	827.2	11.9	2,655.2
3-Yr Avg.	504.2	1,033.0	624.0	13.7	2,174.9
Var % - LY	-24%	-24%	-38%	-14%	-29%
Var % 3-Yr Avg.	-15%	-8%	-18%	-25%	-13%
Storage Capacity	1,622.8	4,026.5	2,497.2	30.6	8,177.1
Estimated Working Capacity	1,054.8	2,617.2	1,623.2	19.9	5,315.1
25-26 % of Wkg Cap	41%	36%	32%	51%	36%

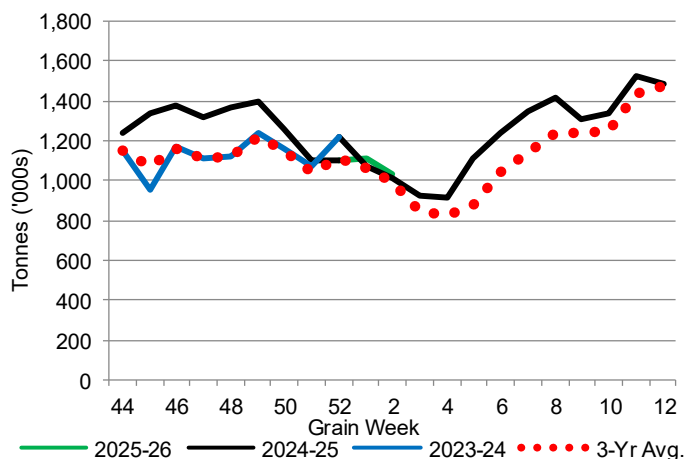
1-B1 Terminal Stocks ('000 tonnes) – Week 02

	VC	PR	West Coast	CH	TB	Total
2025-26	604.2	11.4	615.6	-	419.7	1,035.3
2024-25	556.5	46.0	602.5	0.7	408.4	1,011.6
3-Yr Avg.	567.7	23.7	591.4	0.5	405.4	997.3
Var % - LY	9%	-75%	2%	-100%	3%	2%
Var % 3-Yr Avg.	6%	-52%	4%	-100%	4%	4%
Storage Capacity	1,275.5	209.5	1,485.0	140.0	1,127.5	2,752.5
Estimated Working Capacity	892.9	146.7	1,039.6	98.0	789.2	1,926.8
25-26 % of Wkg Cap	68%	8%	59%	0%	53%	54%

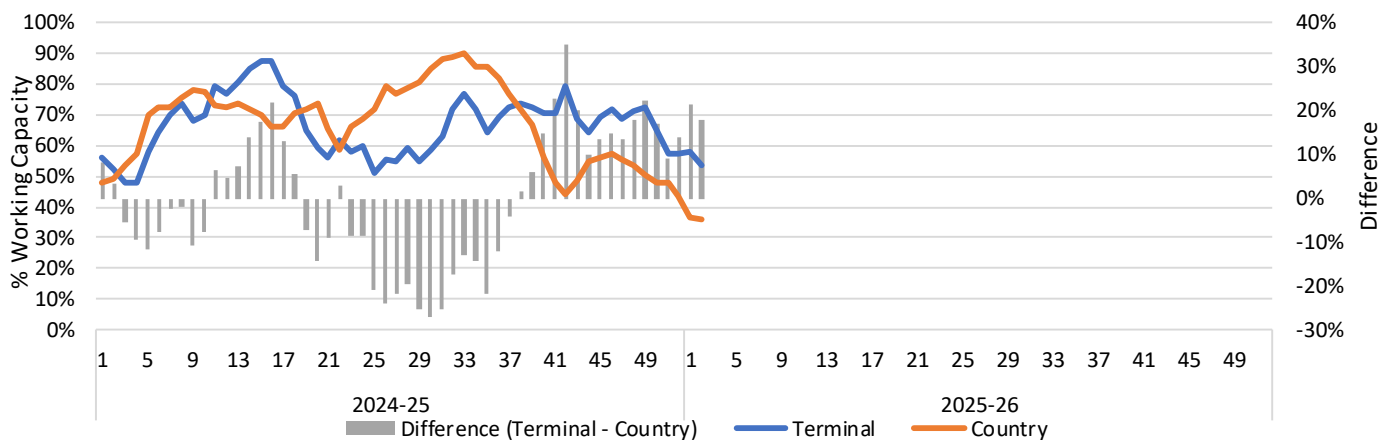
1-A2 Weekly Country Stocks in Store



1-B2 Weekly Terminal Stocks in Store



1-C Weekly Stock Balance

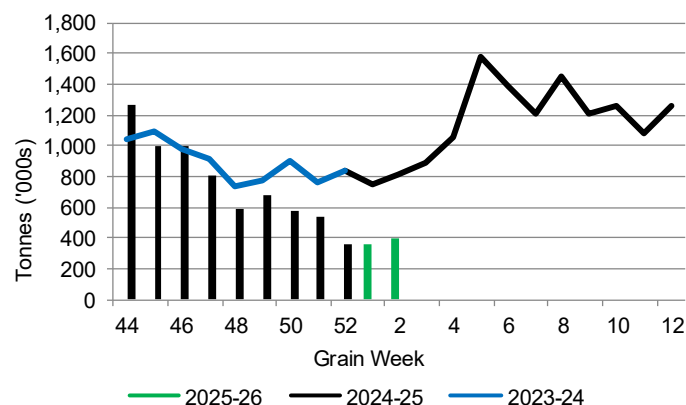


## 2. Country Deliveries

2-A Country Deliveries ('000 tonnes) – Week 02

	MB	SK	AB	BC	Total
2025-26	99.6	170.8	128.1	3.3	401.8
2024-25	136.4	369.9	294.3	6.6	807.2
4 Wk Avg	91.5	210.2	106.9	2.1	410.8
Var % to Last Year	-27%	-54%	-57%	-50%	-50%
Var % To 4 Wk Avg	9%	-19%	20%	57%	-2%

2-B 2025-26 Weekly Country Deliveries



## 3. Port Performance

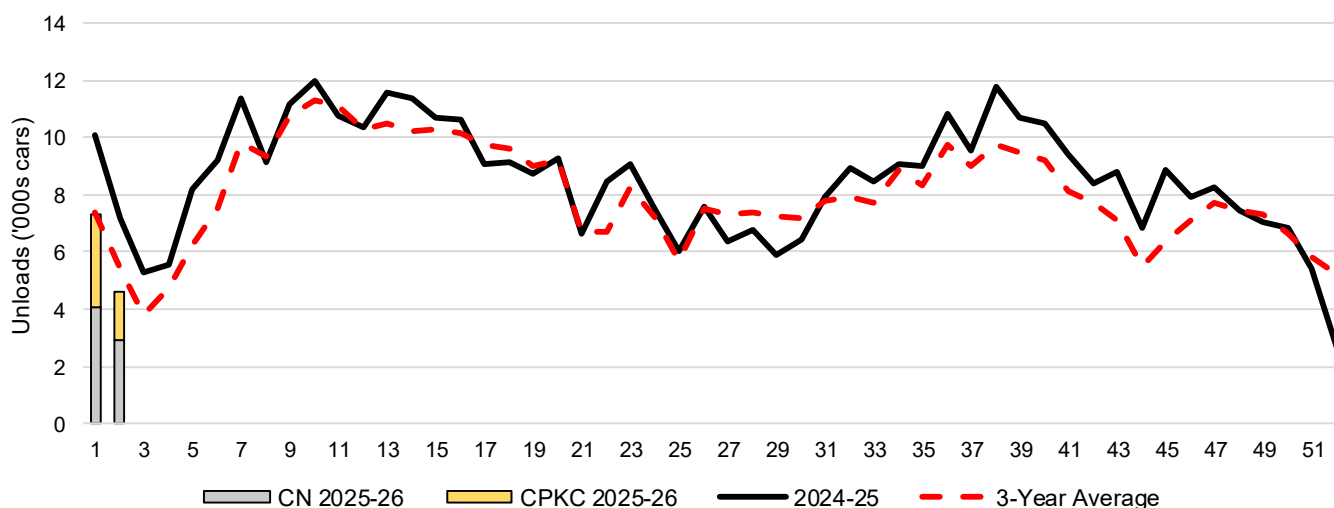
3-A Weekly Unloads by Port (Cars) – This Year for Week 02, 4-Week Moving Average and Variances

	Vancouver	Prince Rupert	West Coast	Thunder Bay	Churchill	Total
2025-26	3,599	110	3,709	877	-	4,586
2024-25	5,728	300	6,028	1,127	n/a	7,155
4-Wk Avg.	3,402	239	3,641	1,363	-	5,004
Var % to Last Year	-37%	-63%	-38%	-22%	n/a	-36%
Var % to 4-Wk Avg.	6%	-54%	2%	-36%	n/a	-8%

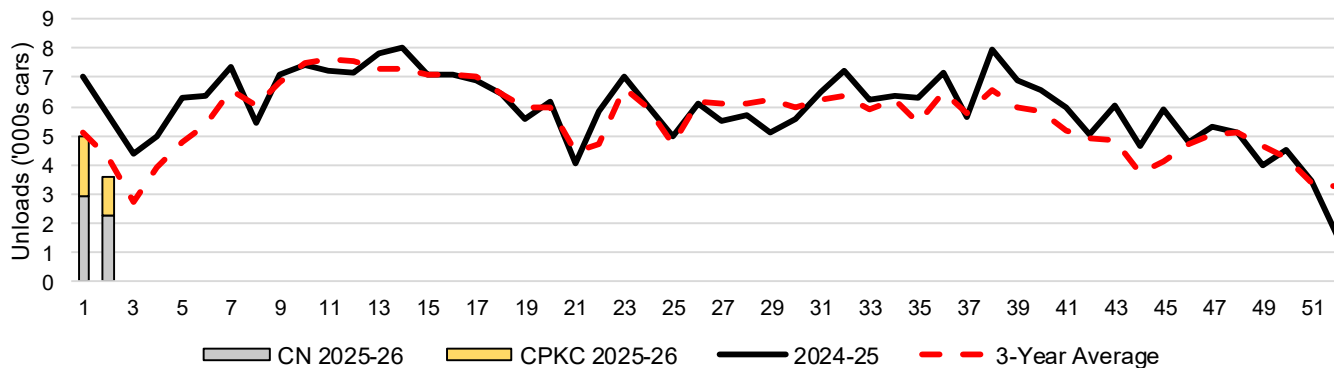
3-B Terminal Unloads by Port – This Year-to-Date as at Week 02 and Variances

YTD Unloads (cars)	Vancouver	Prince Rupert	West Coast	Thunder Bay	Churchill	Total
2025-26	8,592	510	9,102	2,825	-	11,927
2024-25	12,755	1,401	14,156	3,091	-	17,247
3-Yr Avg	9,356	651	10,007	2,783	-	12,791
Var % to Last Year	-33%	-64%	-36%	-9%	n/a	-31%
Var % to 3-Yr Avg	-8%	-22%	-9%	1%	n/a	-7%
YTD Unloads ('000 tonnes)						
2025-26	819.8	47.0	866.8	276.2	-	1,143.0
2024-25	1,188.2	129.7	1,317.9	298.4	-	1,616.3
3-Yr Avg.	879.5	60.2	939.7	269.4	-	1,209.1
Var % to Last Year	-31%	-64%	-34%	-7%	n/a	-29%
Var % to 3-Yr Avg.	-7%	-22%	-8%	3%	n/a	-5%

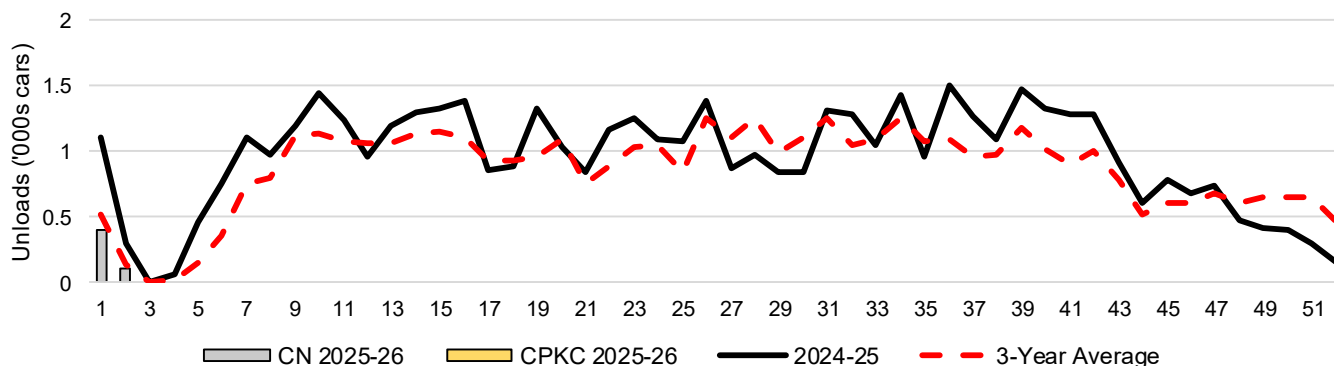
3-C Western Port Terminal Unloads (cars), Total by Carrier, This Year vs. Last Year and the 3-Year Average



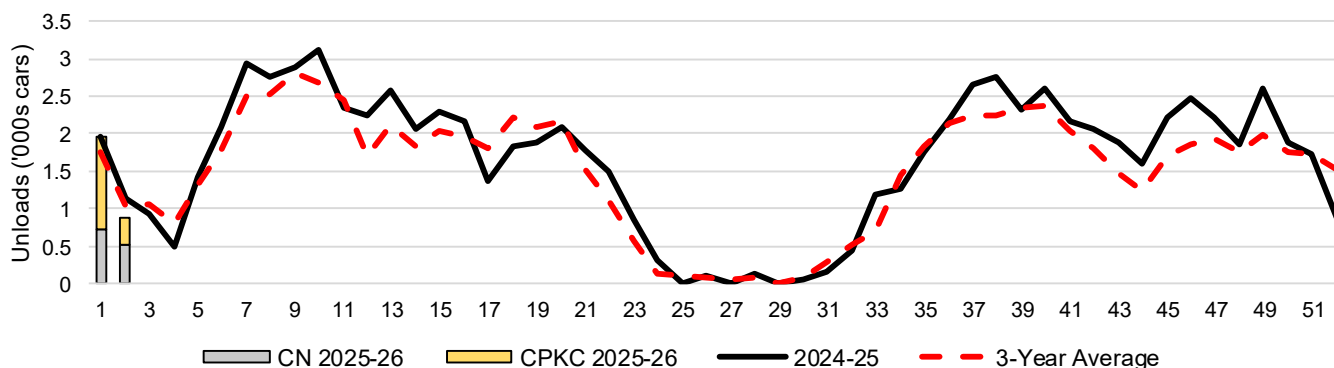
### 3-D Vancouver Terminal Unloads (cars), Total by Carrier, This Year vs. Last Year and the 3-Year Average



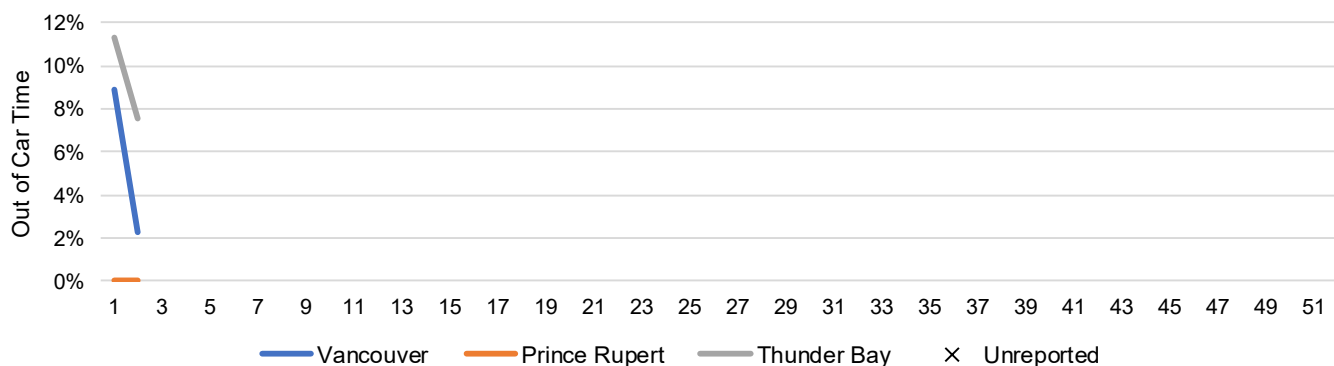
### 3-E Prince Rupert Terminal Unloads (cars), Total by Carrier, This Year vs. Last Year and the 3-Year Average



### 3-F Thunder Bay Terminal Unloads (cars), Total by Carrier, This Year vs. Last Year and the 3-Year Average



### 3-G Weekly Out-of-Car Time (% of hours out-of-cars / total hours working)



Out-of-car time is measured weekly and uses data from terminal elevators on the total number of hours the facilities are open & staffed (including overtime hours) and the corresponding number of hours that terminals have no railcars available to unload. The measure is expressed as a percentage (hours without cars to the total number of hours working).

### 3-H Monthly Unloads (cars) – This Year vs. Last Year and the 3-Year Average to Week 52 2024-25

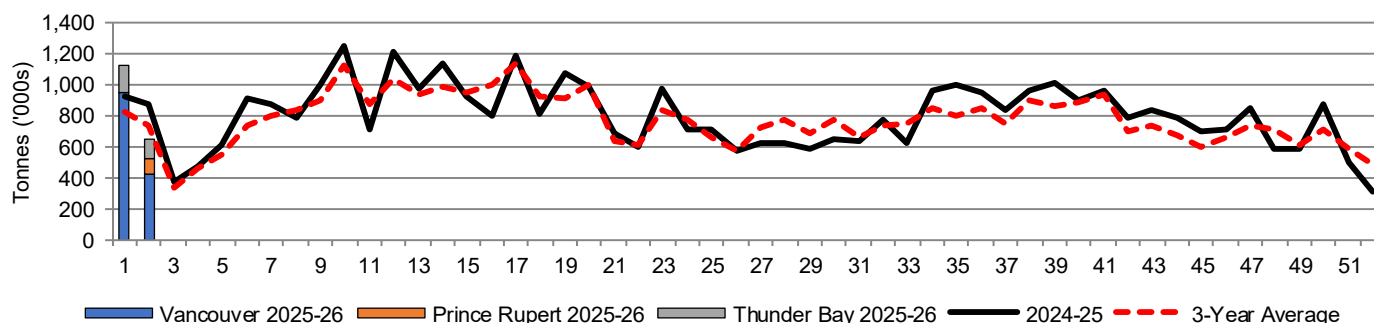
Months	Aug	Sep	Oct	Nov	Dec	Jan	Feb	Mar	Apr	May	Jun	Jul
Weeks	1-4	5-8	9-13	14-17	18-21	22-26	27-30	31-34	35-39	40-43	44-47	48-52
2024-25	28,103	37,927	55,870	41,829	33,858	38,654	25,580	34,401	51,849	37,118	31,922	29,385
2023-24	18,158	30,245	49,223	35,668	32,949	27,216	30,125	28,067	43,763	35,188	27,940	34,684
3-Yr Avg.	19,747	32,901	53,921	40,408	34,590	35,315	29,124	32,312	46,302	32,166	26,756	33,154
Var % to Last Year	55%	25%	14%	17%	3%	42%	-15%	23%	18%	5%	14%	-15%
Var % to 3-Yr Avg.	42%	15%	4%	4%	-2%	9%	-12%	6%	12%	15%	19%	-11%

## 4. Shipments

### 4-A Shipments from Port Terminals ('000 tonnes) – This Year-to-Date as at Week 02 and Variance to Last Year-to-Date

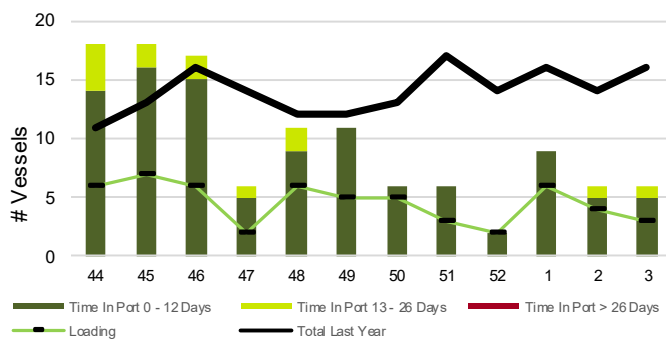
	Vancouver	Prince Rupert	West Coast	Thunder Bay	Churchill	Total
2025-26	1,374.0	106.3	1,480.3	285.9	-	1,766.2
2024-25	1,191.5	222.7	1,414.2	374.6	-	1,788.8
3-Yr Avg.	1,091.1	135.3	1,226.4	324.4	-	1,550.8
Var % to Last Year	15%	-52%	5%	-24%	n/a	-1%
Var % to 3-Yr Avg.	26%	-21%	21%	-12%	n/a	14%

### 4-B Weekly Shipments ('000 tonnes) from Port Terminals – This Year vs Last Year and the 3-Year Average

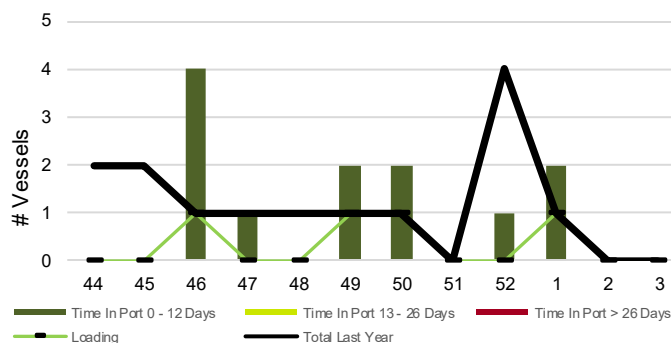


## 5. Vessels

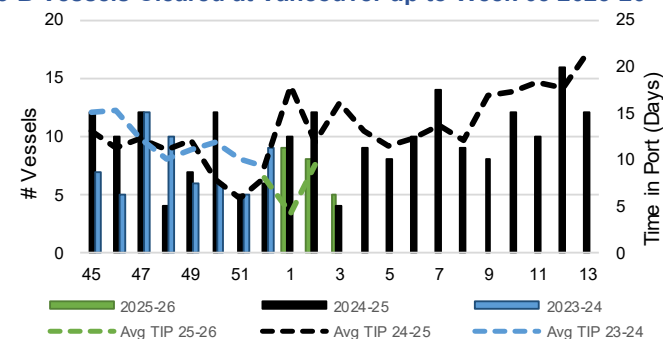
### 5-A Vessel Lineup at Vancouver as of Week 03 2025-26



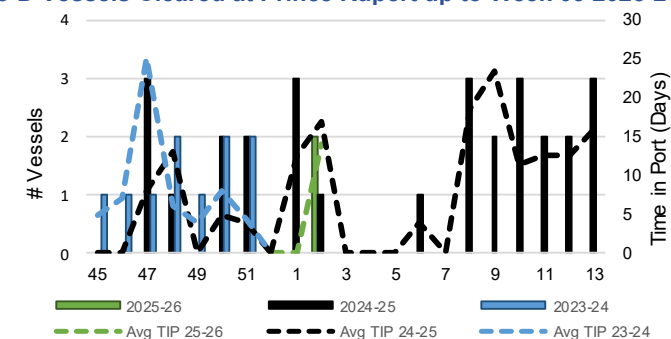
### 5-C Vessel Lineup at Prince Rupert as of Week 03 2025-26



### 5-B Vessels Cleared at Vancouver up to Week 03 2025-26



### 5-D Vessels Cleared at Prince Rupert up to Week 03 2025-26



Note: The 'Time in Port' measure for 5-A and 5-C is calculated as how long each vessel in the lineup has been in port as at Sunday 23:59 of that grain week. The 'Avg Time in Port (TIP)' measure for 5-B and 5-D is the average number of days that all vessels which cleared that week were in port. These measures use vessel data provided by the BC Chamber of Shipping and Pacific Pilotage Authority.