

# Grain Monitoring Program

## Weekly Performance Update

November 18, 2025

For Grain Week 14 2025-26 CY  
November 03, 2025 to November 09, 2025

### Summary

Summary		Week 14	Week 13	Var. from Last Year	
1. Stocks in Store ('000 tonnes)					
Country Elevators	↑	3,894.9	3,797.4	3%	
% of Working Capacity		73%	71%		
Terminal Elevators	↑	1,659.2	1,607.7	1%	
% of Working Capacity		86%	83%		
2. Country Deliveries ('000 tonnes)					
Country Deliveries	↓	1,182.2	1,291.4	-3%	
3. Port Performance (Cars)					
Vancouver Unloads	↓	6,737	7,264	-16%	
Prince Rupert Unloads	↑	1,527	1,316	18%	
Churchill Unloads	—	0	0	n/a	
Thunder Bay Unloads	↓	1,834	2,035	-11%	
Total Weekly Unloads	↓	10,098	10,615	-11%	
4-Week Rolling Average	↓	10,657	11,131	-3%	
Var. to 4-Week Rolling Average		-5%	-5%		
YTD Unloads		126,220	116,122	-5%	
Weekly Out-of-Car Time	↓	4.9%	5.8%	18.7%	
4. Terminal Shipments Year-to-Date ('000 tonnes)					
Vancouver	↑	8,073.7	7,480.2	-5%	
Prince Rupert	↑	1,022.8	907.6	-13%	
Churchill	—	0.0	0.0	n/a	
Thunder Bay	↑	2,401.6	2,173.1	0%	
Total Western Canada	↑	11,498.1	10,560.9	-5%	
5. Vessels as at Nov 16, 2025		Week 15	Week 14	Var. from Last Year	
Vancouver	Vessel Lineup in port	↑	20	14	-29%
	Vessels Cleared	↑	16	13	45%
	Vessels Arrived	↑	22	10	47%
Pr. Rupert	Vessel Lineup in port	—	4	4	0%
	Vessels Cleared	—	2	2	0%
	Vessels Arrived	↓	2	3	0%
Vessels Inbound Nov 17, 2025 to Nov 23, 2025 (Week 16)					
Vancouver		21			
Prince Rupert		1			
6. Weather		Week 14 Actual	Week 15 Actual	Week 16 Forecast	
Winnipeg Days < -25°C		0		0	
Edmonton Days < -25°C		0		0	
Vancouver Days Precip > 8mm		2		4	

### 1. Stocks in Store: (Page 2)

- Country stocks increased to 3.89 MMT in Week 14 utilizing 73% of the system's working capacity. Space in primary elevators is good.
- Total western port terminal stocks increased to 1.66 MMT in Week 14, utilizing 86% of the working capacity. Space at Vancouver is limited.

### 2. Country Deliveries: (Page 3)

- Deliveries to primary elevators were 1.18 MMT in Week 14.

### 3. Port Performance: (Pages 3-5)

- Total western port unloads were 5% lower than the 4-week moving average and 11% lower than Week 14 last year.
- West Coast unloads were 8,264 cars (Vancouver 6,737 and Prince Rupert 1,527), 5% lower than the 4-week moving average and 11% lower than Week 14 last year.
- Thunder Bay had 1,834 unloads, 4% lower than the 4-week moving average and 11% lower than Week 14 last year.
- The total average terminal out-of-car time (OCT) decreased to 4.9% from 5.8% the previous week. The OCT for Week 14 was 6.6% at Vancouver and 0.0% at Thunder Bay. At the time of publishing, Prince Rupert had not yet reported Week 14 OCT.

### 4. Shipments: (Page 5)

- Year-to-date Western Canadian shipments from port terminal elevators at Week 14 are 5% lower than the same period last year and 3% higher than the 3-year average.

### 5. Vessels: (Page 5)

- Vancouver vessel lineup for Week 15 2025-26 increased to 20 vessels (The current one-year average at Vancouver is 21 vessels). Of the 20, 8 were at berth, 9 were anchored at English Bay, 1 was anchored at Burrard Inlet, and 2 were anchored at Vancouver Island.
- Prince Rupert vessel lineup for Week 15 2025-26 remained at 4 vessels (The current one-year average at Prince Rupert is 4 vessels).
- Vessels cleared from Vancouver was 16 and from Prince Rupert was 2 in Week 15 2025-26.

### 6. Weather: (Page 6)

- Temperatures across the prairies are forecasted to remain above -25°C. Railways are not expected to invoke their winter operating plans.
- Vancouver is forecast to receive high levels of precipitation during Week 16 which may impact the ability to load grain into vessels.

# 1. Stocks in Store

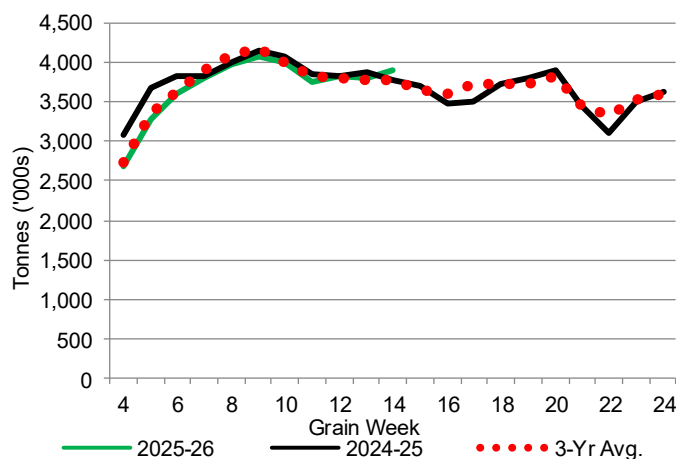
1-A1 Country Stocks ('000 tonnes) – Week 14

	MB	SK	AB	BC	Total
2025-26	847.1	1,795.7	1,236.7	15.4	3,894.9
2024-25	824.0	1,903.7	1,037.8	17.8	3,783.3
3-Yr Avg.	838.1	1,789.8	1,119.3	18.2	3,765.4
Var % - LY	3%	-6%	19%	-13%	3%
Var % 3-Yr Avg.	1%	0%	10%	-15%	3%
Storage Capacity	1,635.0	4,019.4	2,490.4	30.6	8,175.4
Estimated Working Capacity	1,062.7	2,612.6	1,618.7	19.9	5,313.9
25-26 % of Wkg Cap	80%	69%	76%	77%	73%

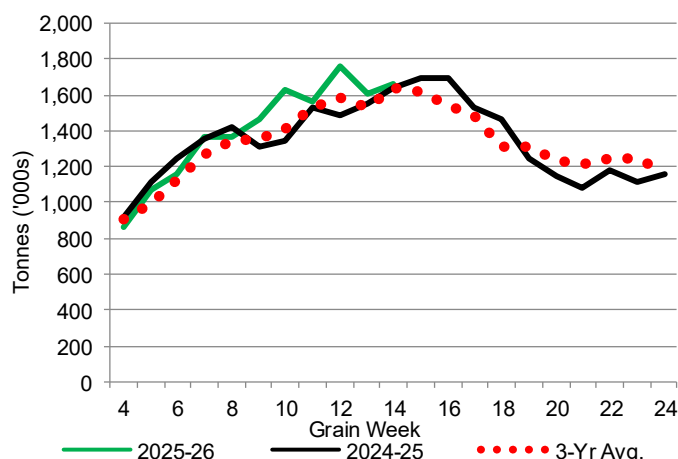
1-B1 Terminal Stocks ('000 tonnes) – Week 14

	VC	PR	West Coast	CH	TB	Total
2025-26	892.1	2.7	894.8	0.7	763.7	1,659.2
2024-25	866.7	118.9	985.6	0.7	656.6	1,642.9
3-Yr Avg.	846.3	81.8	928.0	0.7	711.9	1,640.6
Var % - LY	3%	-98%	-9%	0%	16%	1%
Var % 3-Yr Avg.	5%	-97%	-4%	0%	7%	1%
Storage Capacity	1,275.5	209.5	1,485.0	140.0	1,127.5	2,752.5
Estimated Working Capacity	892.9	146.7	1,039.6	98.0	789.2	1,926.8
25-26 % of Wkg Cap	100%	2%	86%	1%	97%	86%

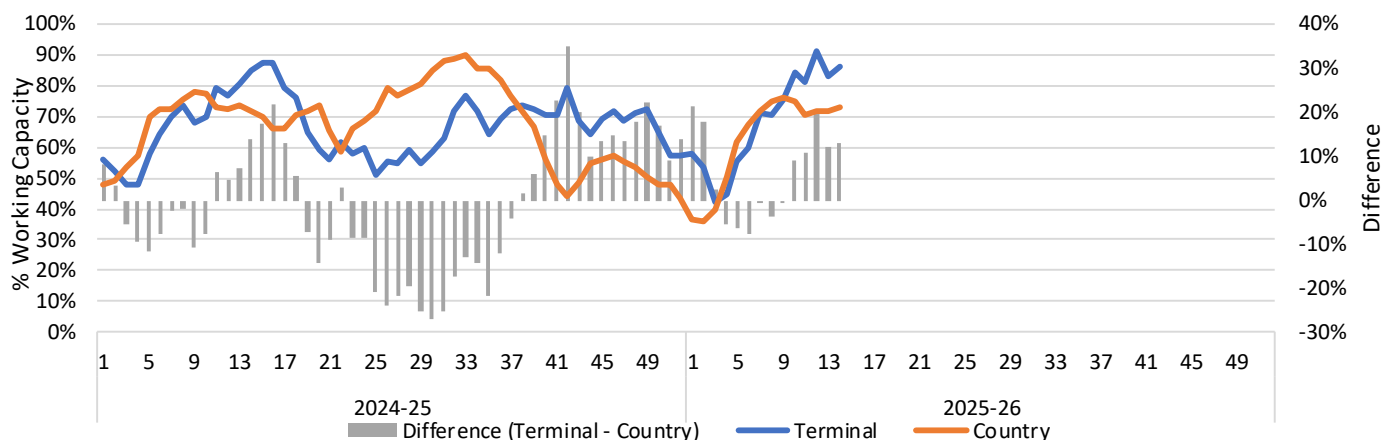
1-A2 Weekly Country Stocks in Store



1-B2 Weekly Terminal Stocks in Store



1-C Weekly Stock Balance

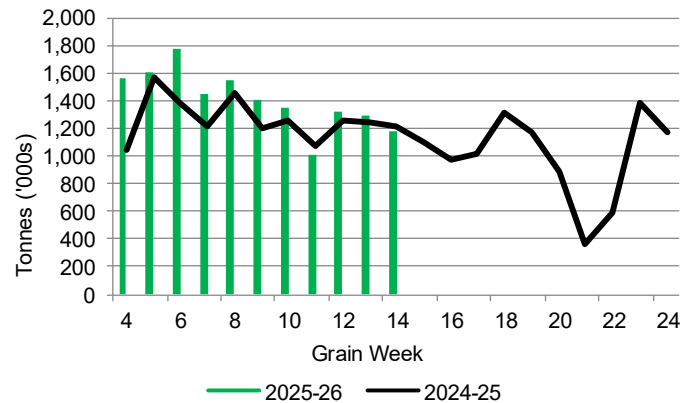


## 2. Country Deliveries

### 2-A Country Deliveries ('000 tonnes) – Week 14

	MB	SK	AB	BC	Total
2025-26	224.4	661.2	289.3	7.3	1,182.2
2024-25	233.8	603.9	376.8	6.3	1,220.8
4 Wk Avg	232.0	612.9	348.3	6.2	1,199.4
Var % to Last Year	-4%	10%	-23%	16%	-3%
Var % To 4 Wk Avg	-3%	8%	-17%	18%	-1%

### 2-B 2025-26 Weekly Country Deliveries



## 3. Port Performance

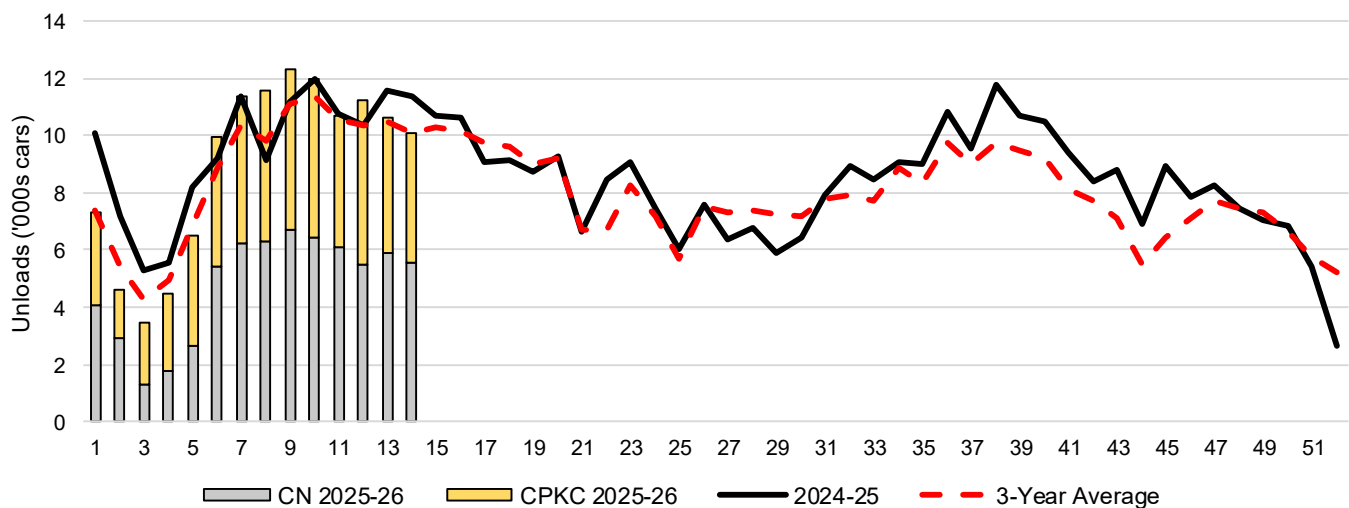
### 3-A Weekly Unloads by Port (Cars) – This Year for Week 14, 4-Week Moving Average and Variances

	Vancouver	Prince Rupert	West Coast	Thunder Bay	Churchill	Total
2025-26	6,737	1,527	8,264	1,834	-	10,098
2024-25	8,014	1,290	9,304	2,066	n/a	11,370
4-Wk Avg.	7,286	1,453	8,738	1,919	-	10,657
Var % to Last Year	-16%	18%	-11%	-11%	n/a	-11%
Var % to 4-Wk Avg.	-8%	5%	-5%	-4%	n/a	-5%

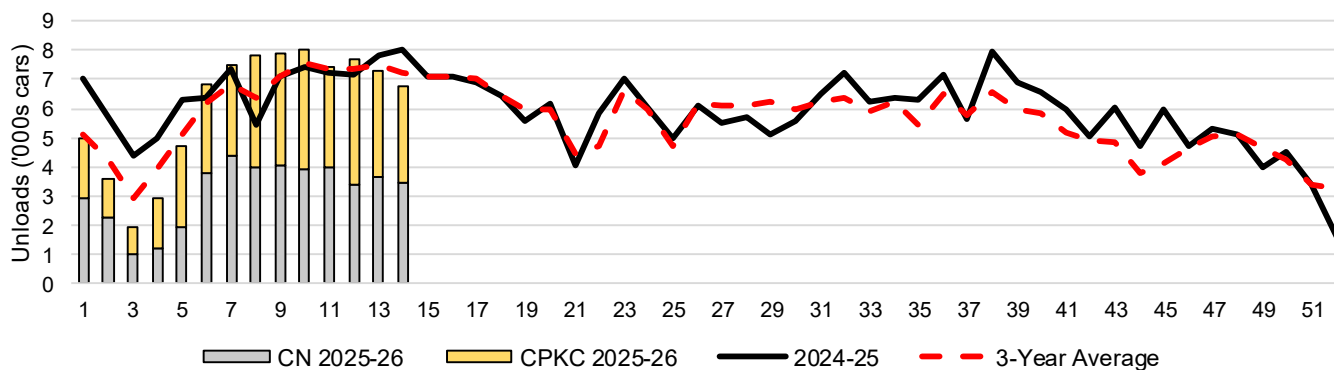
### 3-B Terminal Unloads by Port – This Year-to-Date as at Week 14 and Variances

YTD Unloads (cars)	Vancouver	Prince Rupert	West Coast	Thunder Bay	Churchill	Total
2025-26	85,440	11,344	96,784	29,436	-	126,220
2024-25	92,206	12,079	104,285	28,985	-	133,270
3-Yr Avg	84,701	9,344	94,045	27,906	-	121,951
Var % to Last Year	-7%	-6%	-7%	2%	n/a	-5%
Var % to 3-Yr Avg	1%	21%	3%	5%	n/a	4%
YTD Unloads ('000 tonnes)						
2025-26	8,257.7	1,100.4	9,358.1	2,845.3	-	12,203.4
2024-25	8,716.4	1,156.2	9,872.6	2,819.5	-	12,692.1
3-Yr Avg.	8,088.8	901.3	8,990.1	2,700.7	-	11,690.8
Var % to Last Year	-5%	-5%	-5%	1%	n/a	-4%
Var % to 3-Yr Avg.	2%	22%	4%	5%	n/a	4%

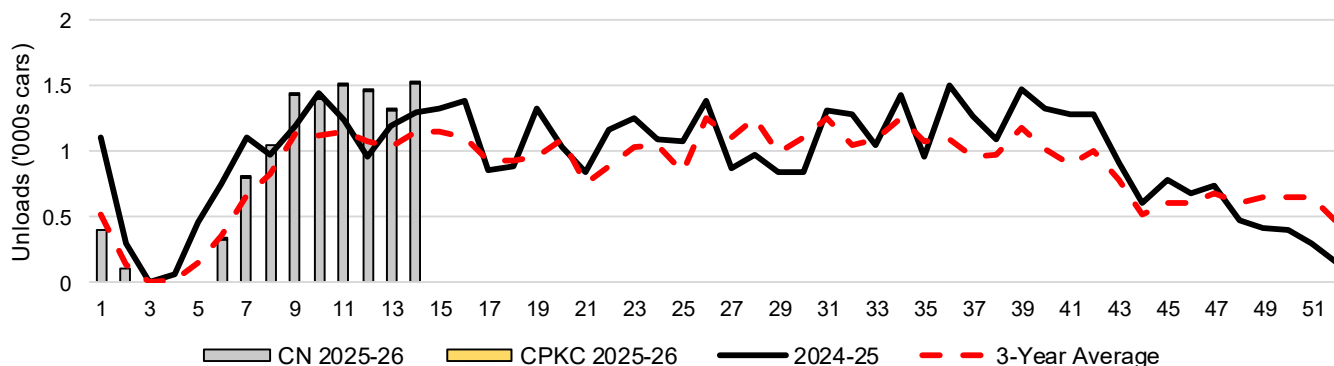
### 3-C Western Port Terminal Unloads (cars), Total by Carrier, This Year vs. Last Year and the 3-Year Average



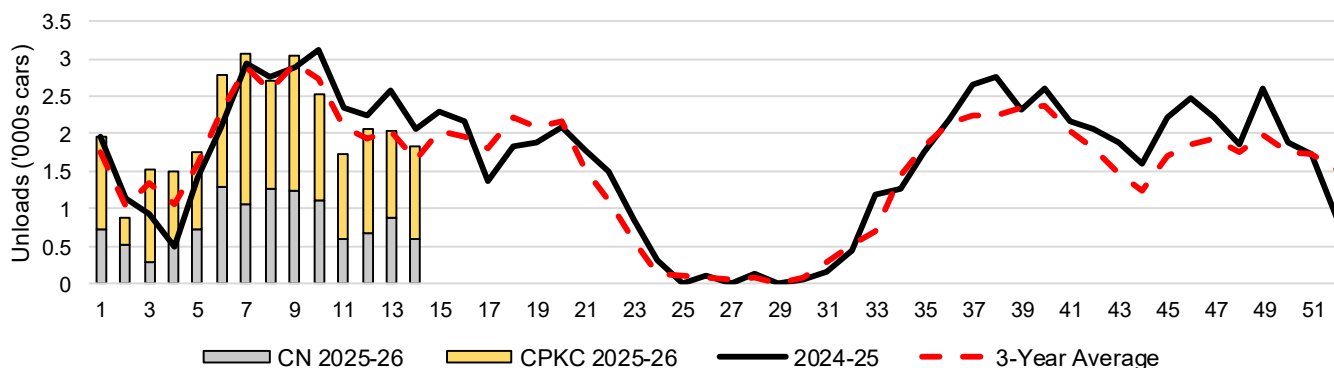
### 3-D Vancouver Terminal Unloads (cars), Total by Carrier, This Year vs. Last Year and the 3-Year Average



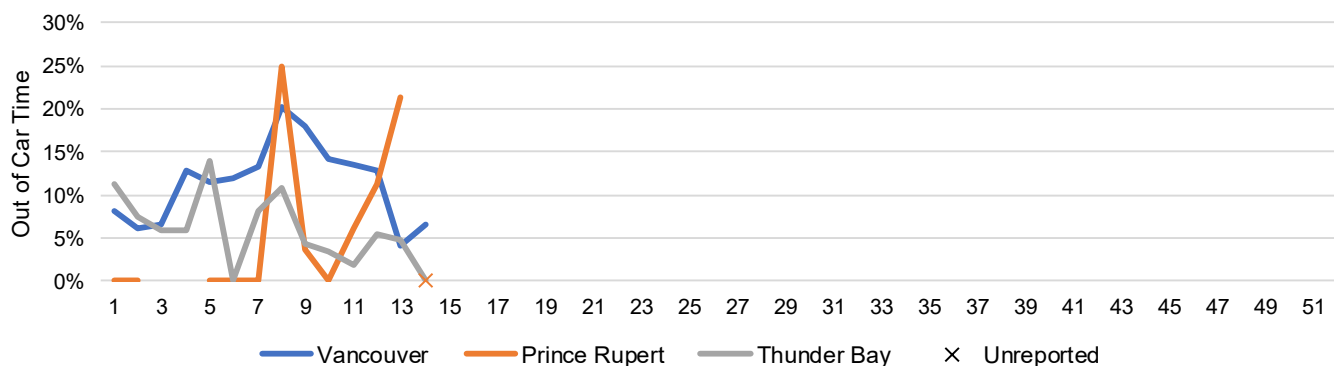
### 3-E Prince Rupert Terminal Unloads (cars), Total by Carrier, This Year vs. Last Year and the 3-Year Average



### 3-F Thunder Bay Terminal Unloads (cars), Total by Carrier, This Year vs. Last Year and the 3-Year Average



### 3-G Weekly Out-of-Car Time (% of hours out-of-cars / total hours working)



Out-of-car time is measured weekly and uses data from terminal elevators on the total number of hours the facilities are open & staffed (including overtime hours) and the corresponding number of hours that terminals have no railcars available to unload. The measure is expressed as a percentage (hours without cars to the total number of hours working).

### 3-H Monthly Unloads (cars) – This Year vs. Last Year and the 3-Year Average to Week 13 2025-26

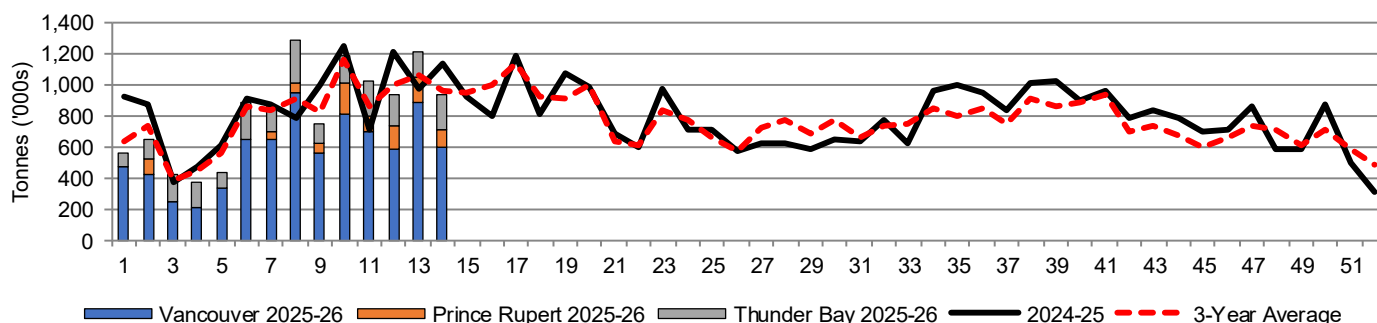
Months	Aug	Sep	Oct	Nov	Dec	Jan	Feb	Mar	Apr	May	Jun	Jul
Weeks	1-4	5-8	9-13	14-17	18-22	23-26	27-30	31-34	35-39	40-43	44-47	48-52
2025-26	19,847	39,407	56,868	-	-	-	-	-	-	-	-	-
2024-25	28,103	37,927	55,870	41,829	42,324	30,188	25,580	34,401	51,849	37,116	31,941	29,346
3-Yr Avg.	22,036	35,859	53,986	40,406	41,303	28,601	29,124	32,312	46,300	32,165	26,762	33,141
Var % to Last Year	-29%	4%	2%									
Var % to 3-Yr Avg.	-10%	10%	5%									

## 4. Shipments

### 4-A Shipments from Port Terminals ('000 tonnes) – This Year-to-Date as at Week 14 and Variance to Last Year-to-Date

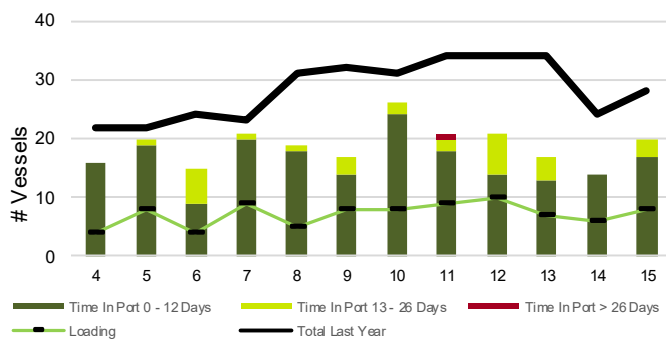
	Vancouver	Prince Rupert	West Coast	Thunder Bay	Churchill	Total
2025-26	8,073.7	1,022.8	9,096.5	2,401.6	-	11,498.1
2024-25	8,482.8	1,179.9	9,662.7	2,406.1	-	12,068.8
3-Yr Avg.	8,100.1	871.0	8,971.1	2,244.0	-	11,215.1
Var % to Last Year	-5%	-13%	-6%	0%	n/a	-5%
Var % to 3-Yr Avg.	0%	17%	1%	7%	n/a	3%

### 4-B Weekly Shipments ('000 tonnes) from Port Terminals – This Year vs Last Year and the 3-Year Average

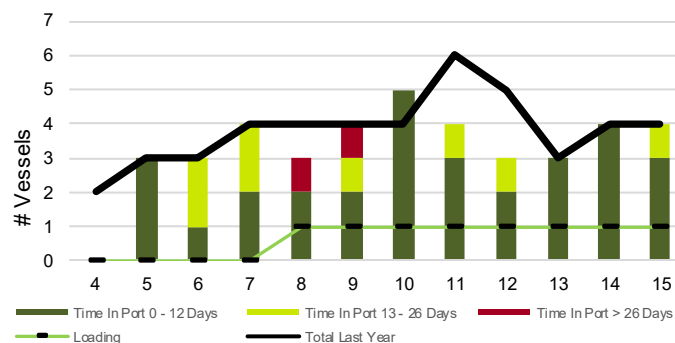


## 5. Vessels

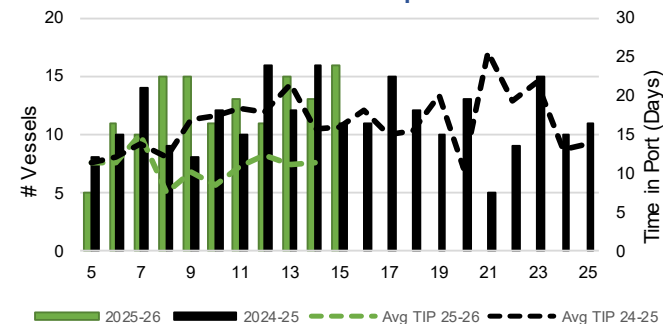
### 5-A Vessel Lineup at Vancouver as of Week 15 2025-26



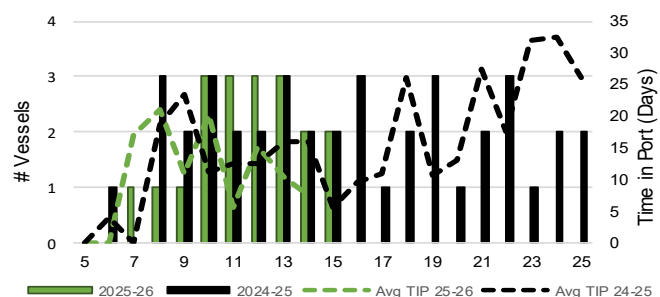
### 5-C Vessel Lineup at Prince Rupert as of Week 15 2025-26



### 5-B Vessels Cleared at Vancouver up to Week 15 2025-26



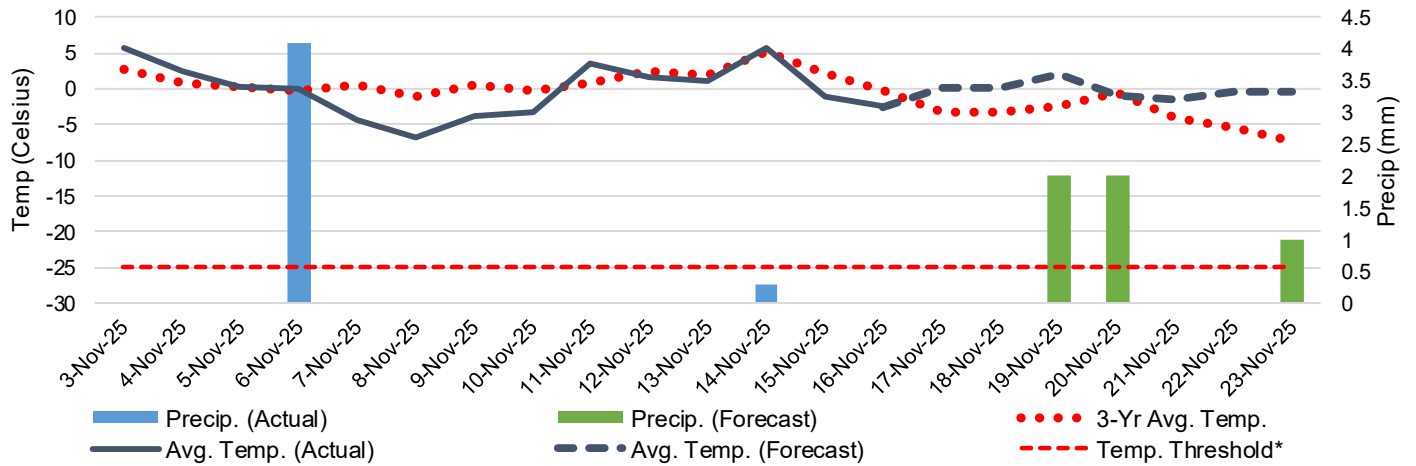
### 5-D Vessels Cleared at Prince Rupert up to Week 15 2025-26



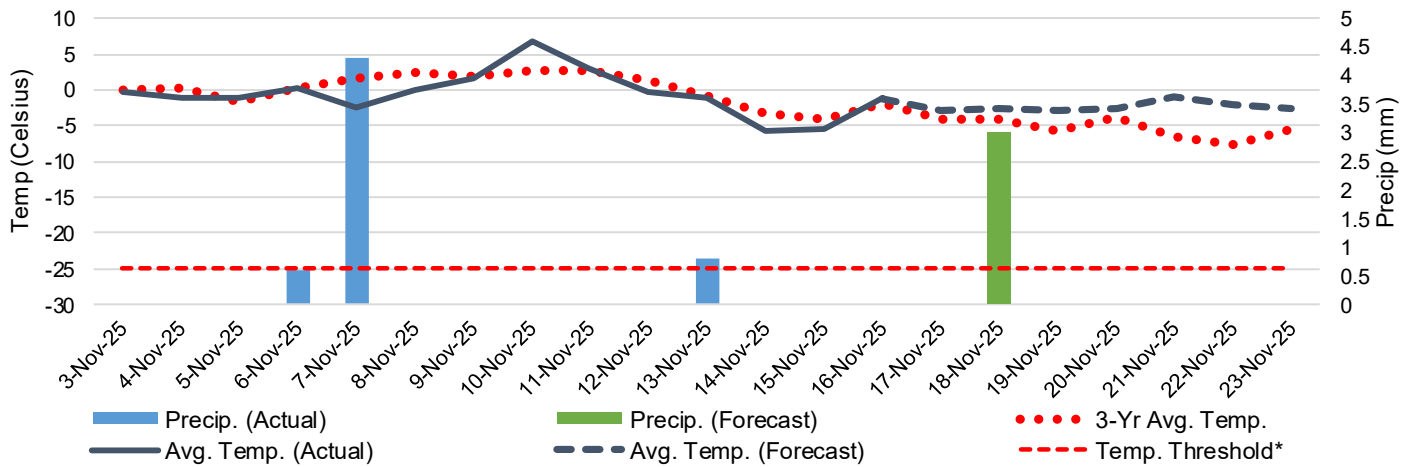
Note: The 'Time in Port' measure for 5-A and 5-C is calculated as how long each vessel in the lineup has been in port as at Sunday 23:59 of that grain week. The 'Avg Time in Port (TIP)' measure for 5-B and 5-D is the average number of days that all vessels which cleared that week were in port. These measures use vessel data provided by the BC Chamber of Shipping and Pacific Pilotage Authority.

## 6. Weather

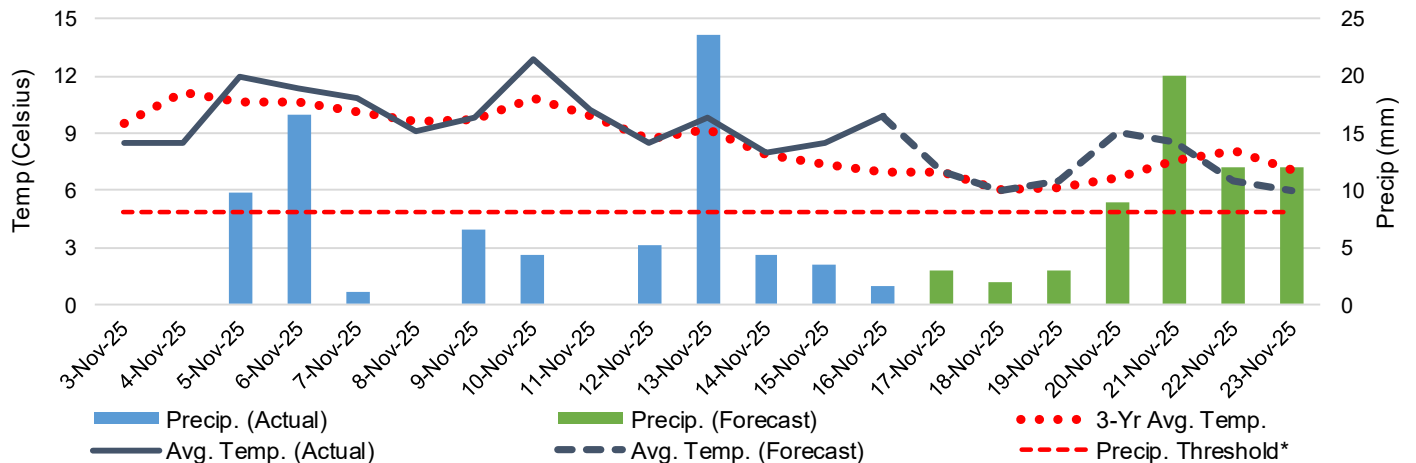
6-A Actual and Forecasted Weather at Winnipeg up to Week 16 2025-26



6-B Actual and Forecasted Weather at Edmonton up to Week 16 2025-26



6-C Actual and Forecasted Weather at Vancouver up to Week 16 2025-26



\*Note: Precip Threshold refers to 8mm of rain. At this level of precipitation, vessel loading may be delayed. The duration of the delay will be dependent on the ship, the duration of rainfall, and the amount of precipitation. 8mm is a general guideline and is not meant to be a definitive limit.  
Source: Environment and Climate Change Canada, The Weather Network (Forecast)