

Grain Monitoring Program

Weekly Performance Update

December 23, 2025

For Grain Week 19 2025-26 CY
December 08, 2025 to December 14, 2025

Summary

Summary		Week 19	Week 18	Var. from Last Year
1. Stocks in Store ('000 tonnes)				
Country Elevators		↓ 3,704.8	3,756.6	-3%
% of Working Capacity		70%	71%	
Terminal Elevators		↑ 1,782.4	1,700.7	43%
% of Working Capacity		93%	88%	
2. Country Deliveries ('000 tonnes)				
Country Deliveries		↓ 960.5	1,227.6	-19%
3. Port Performance (Cars)				
Vancouver Unloads		↑ 7,231	6,959	30%
Prince Rupert Unloads		↑ 1,393	1,348	5%
Churchill Unloads		— 0	0	n/a
Thunder Bay Unloads		↓ 1,587	1,886	-16%
Total Weekly Unloads		↑ 10,211	10,193	17%
4-Week Rolling Average		↓ 10,978	11,297	17%
Var. to 4-Week Rolling Average		-7%	-10%	
YTD Unloads		183,737	173,526	1%
Weekly Out-of-Car Time		↓ 4.2%	6.3%	-77.1%
4. Terminal Shipments Year-to-Date ('000 tonnes)				
Vancouver		↑ 11,677.4	11,076.5	-1%
Prince Rupert		↑ 1,664.7	1,598.5	-4%
Churchill		— 0.0	0.0	n/a
Thunder Bay		↑ 3,485.5	3,268.7	3%
Total Western Canada		↑ 16,827.6	15,943.7	0%
5. Vessels as at Dec 21, 2025		Week 20	Week 19	Var. from Last Year
Vancouver	Vessel Lineup in port	↓ 26	30	8%
	Vessels Cleared	↑ 16	7	23%
	Vessels Arrived	↑ 12	10	20%
Pr. Rupert	Vessel Lineup in port	↑ 4	2	-56%
	Vessels Cleared	— 1	1	0%
	Vessels Arrived	↑ 3	0	-25%
Vessels Inbound Dec 22, 2025 to Dec 28, 2025 (Week 21)				
Vancouver		10		
Prince Rupert		0		
6. Weather		Week 19 Actual	Week 20 Actual	Week 21 Forecast
Winnipeg Days < -25°C		1	0	0
Edmonton Days < -25°C		1	1	1
Vancouver Days Precip > 8mm		4	5	4

1. Stocks in Store: (Page 2)

- Country stocks decreased to 3.70 MMT in Week 19 utilizing 70% of the system's working capacity. Space in primary elevators is good.
- Total western port terminal stocks increased to 1.78 MMT in Week 19, utilizing 93% of the working capacity. Space at Vancouver is limited.

2. Country Deliveries: (Page 3)

- Deliveries to primary elevators were 0.96 MMT in Week 19.

3. Port Performance: (Pages 3-5)

- Total western port unloads were 7% lower than the 4-week moving average and 17% higher than Week 19 last year.
- West Coast unloads were 8,624 cars (Vancouver 7,231 and Prince Rupert 1,393), 4% lower than the 4-week moving average and 26% higher than Week 19 last year.
- Thunder Bay had 1,587 unloads, 19% lower than the 4-week moving average and 16% lower than Week 19 last year.
- The total average terminal out-of-car time (OCT) decreased to 4.2% from 6.3% the previous week. The OCT for Week 19 was 5.5% at Vancouver, 0.0% at Prince Rupert, and 1.9% at Thunder Bay.

4. Shipments: (Page 5)

- Year-to-date Western Canadian shipments from port terminal elevators at Week 19 are no different than the same period last year and 5% higher than the 3-year average.
- The Great Lakes – St. Lawrence Seaway System closing of navigation dates, with case-by-case permissions for final clearance, are as follows:
 - Montreal – Lake Ontario Section: Dec 24 (clear by Jan 05)
 - Welland Canal: Dec 26 (clear by Jan 10)
 - Sault Ste. Marie Locks and Canal: Jan 15

5. Vessels: (Page 5)

- Vancouver vessel lineup for Week 20 2025-26 decreased to 26 vessels (The current one-year average at Vancouver is 21 vessels). Of the 26, 9 were at berth, 10 were anchored at English Bay, 1 was anchored at Burrard Inlet, and 6 were anchored at Vancouver Island.
- Prince Rupert vessel lineup for Week 20 2025-26 increased to 4 vessels (The current one-year average at Prince Rupert is 3 vessels).
- Vessels cleared from Vancouver was 16 and from Prince Rupert was 1 in Week 20 2025-26.

6. Weather: (Page 6)

- Temperatures across the prairies are forecasted to drop below -25C regionally. Railways may invoke their winter operating plans where required.
- Vancouver is forecast to receive high levels of precipitation during Week 21 which may impact the ability to load grain into vessels.

1. Stocks in Store

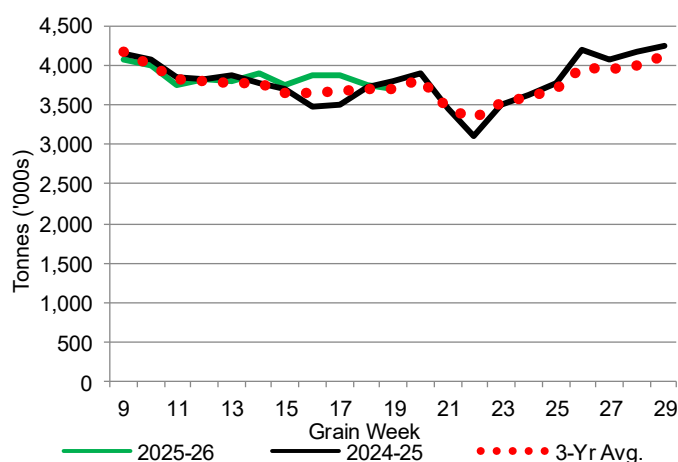
1-A1 Country Stocks ('000 tonnes) – Week 19

	MB	SK	AB	BC	Total
2025-26	758.4	1,767.8	1,169.0	9.6	3,704.8
2024-25	777.9	1,996.9	1,023.2	11.2	3,809.2
3-Yr Avg.	769.1	1,843.7	1,079.6	15.6	3,708.0
Var % - LY	-3%	-11%	14%	-14%	-3%
Var % 3-Yr Avg.	-1%	-4%	8%	-39%	0%
Storage Capacity	1,635.0	4,019.4	2,490.4	30.6	8,175.4
Estimated Working Capacity	1,062.7	2,612.6	1,618.7	19.9	5,313.9
25-26 % of Wkg Cap	71%	68%	72%	48%	70%

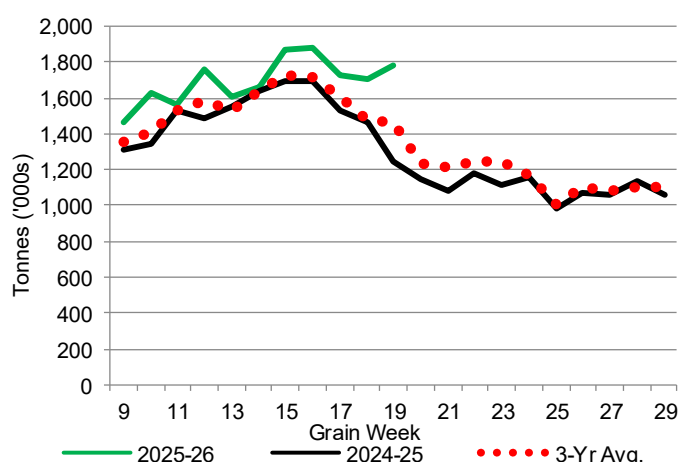
1-B1 Terminal Stocks ('000 tonnes) – Week 19

	VC	PR	West Coast	CH	TB	Total
2025-26	1040.1	98.3	1,138.4	0.7	643.3	1,782.4
2024-25	658.4	86.9	745.3	0.7	504.2	1,250.2
3-Yr Avg.	776.9	103.0	879.8	0.7	589.1	1,469.6
Var % - LY	58%	13%	53%	0%	28%	43%
Var % 3-Yr Avg.	34%	-5%	29%	0%	9%	21%
Storage Capacity	1,275.5	209.5	1,485.0	140.0	1,127.5	2,752.5
Estimated Working Capacity	892.9	146.7	1,039.6	98.0	789.2	1,926.8
25-26 % of Wkg Cap	116%	67%	110%	1%	82%	93%

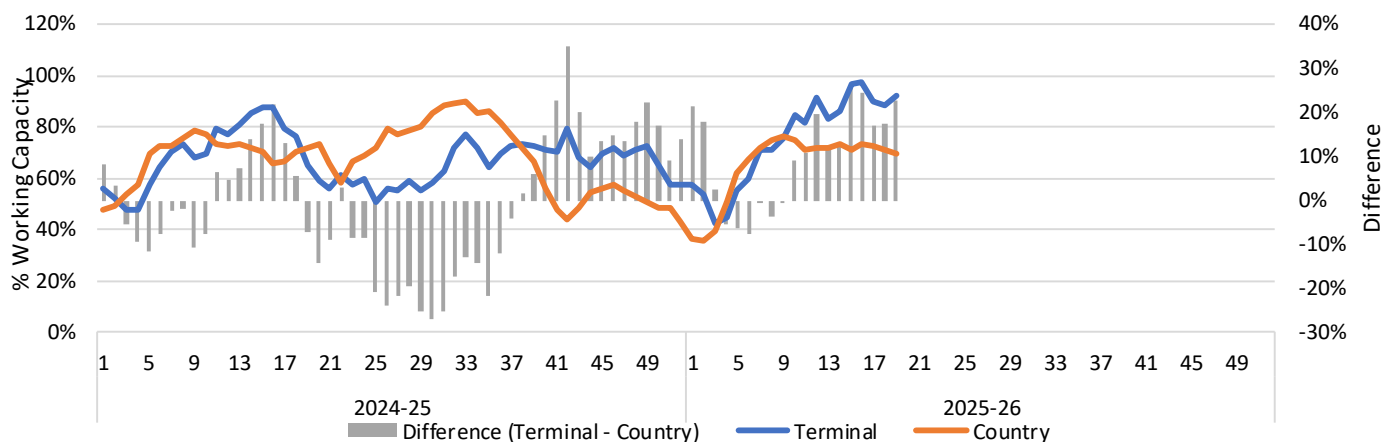
1-A2 Weekly Country Stocks in Store



1-B2 Weekly Terminal Stocks in Store



1-C Weekly Stock Balance

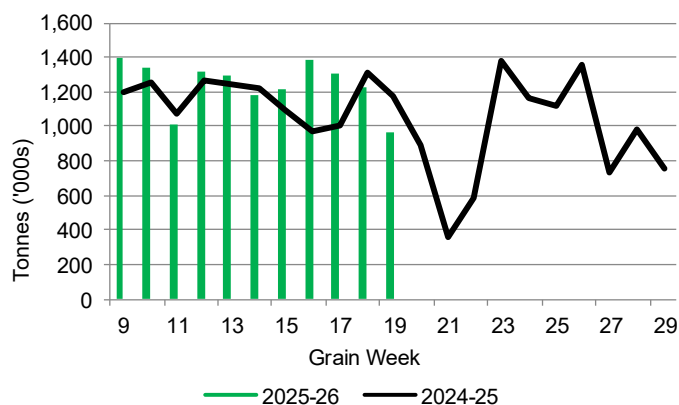


2. Country Deliveries

2-A Country Deliveries ('000 tonnes) – Week 19

	MB	SK	AB	BC	Total
2025-26	179.1	515.8	262.3	3.3	960.5
2024-25	146.4	610.7	408.6	12.4	1,178.1
4 Wk Avg	210.7	672.2	329.8	5.7	1,218.4
Var % to Last Year	22%	-16%	-36%	-73%	-19%
Var % To 4 Wk Avg	-15%	-23%	-21%	-42%	-21%

2-B 2025-26 Weekly Country Deliveries



3. Port Performance

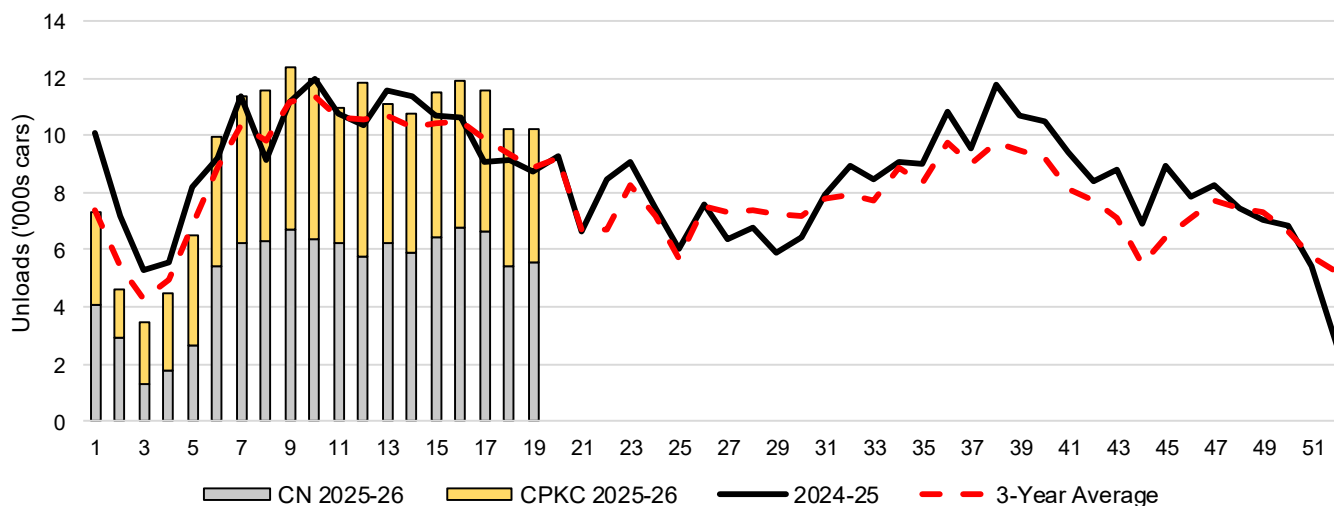
3-A Weekly Unloads by Port (Cars) – This Year for Week 19, 4-Week Moving Average and Variances

	Vancouver	Prince Rupert	West Coast	Thunder Bay	Churchill	Total
2025-26	7,231	1,393	8,624	1,587	-	10,211
2024-25	5,541	1,330	6,871	1,888	n/a	8,759
4-Wk Avg.	7,618	1,398	9,015	1,962	-	10,978
Var % to Last Year	30%	5%	26%	-16%	n/a	17%
Var % to 4-Wk Avg.	-5%	0%	-4%	-19%	n/a	-7%

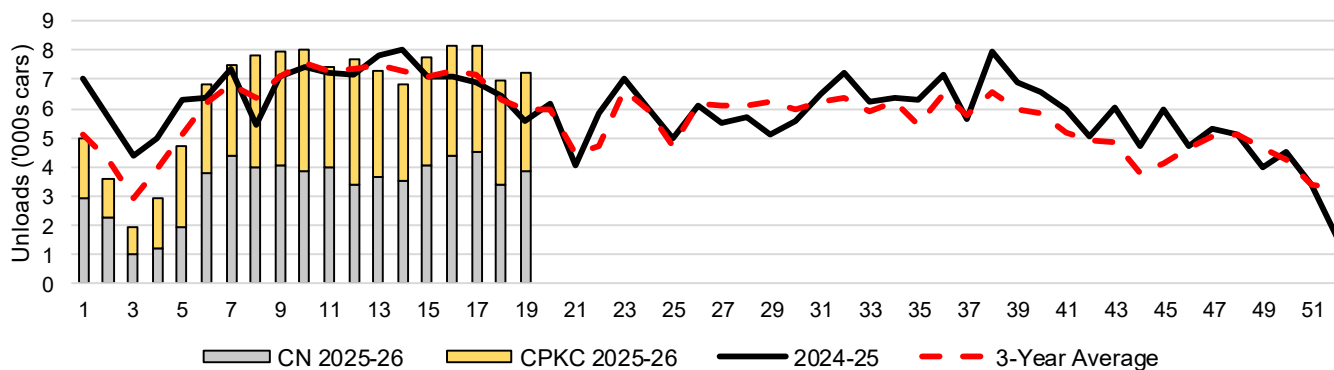
3-B Terminal Unloads by Port – This Year-to-Date as at Week 19 and Variances

YTD Unloads (cars)	Vancouver	Prince Rupert	West Coast	Thunder Bay	Churchill	Total
2025-26	123,728	18,415	142,143	41,594	-	183,737
2024-25	125,232	17,862	143,094	38,524	-	181,618
3-Yr Avg	118,502	14,717	133,218	38,469	-	171,688
Var % to Last Year	-1%	3%	-1%	8%	n/a	1%
Var % to 3-Yr Avg	4%	25%	7%	8%	n/a	7%
YTD Unloads ('000 tonnes)						
2025-26	11,948.8	1,787.4	13,736.2	4,006.2	-	17,742.4
2024-25	11,879.7	1,716.4	13,596.1	3,736.0	-	17,332.1
3-Yr Avg.	11,341.6	1,423.7	12,765.3	3,717.6	-	16,482.9
Var % to Last Year	1%	4%	1%	7%	n/a	2%
Var % to 3-Yr Avg.	5%	26%	8%	8%	n/a	8%

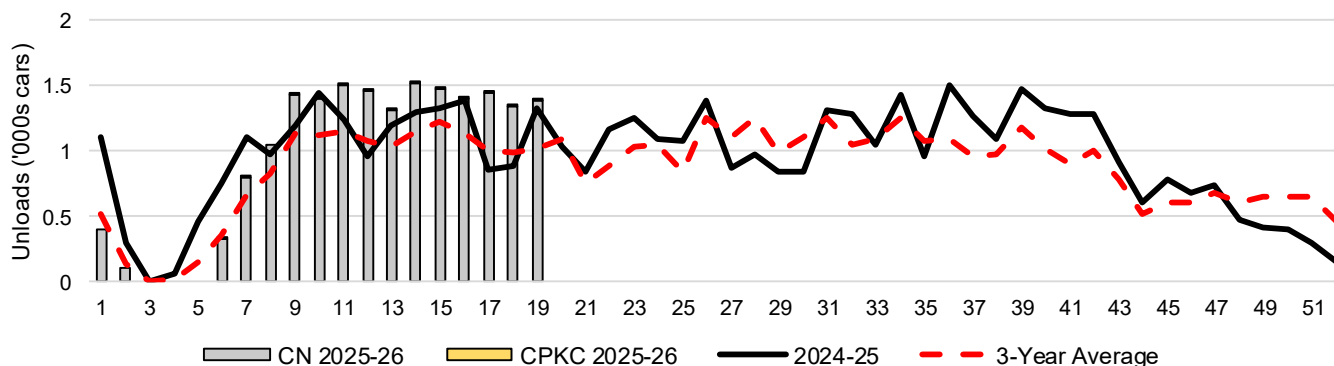
3-C Western Port Terminal Unloads (cars), Total by Carrier, This Year vs. Last Year and the 3-Year Average



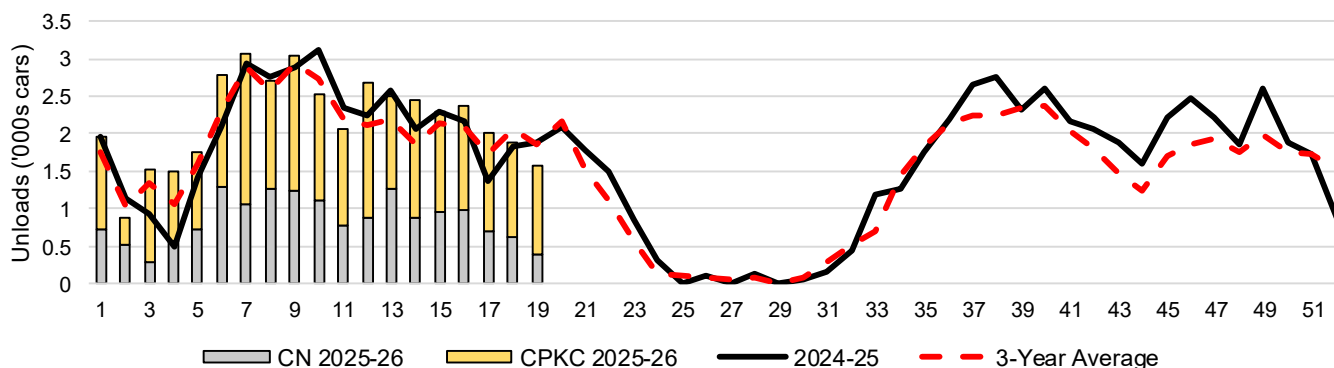
3-D Vancouver Terminal Unloads (cars), Total by Carrier, This Year vs. Last Year and the 3-Year Average



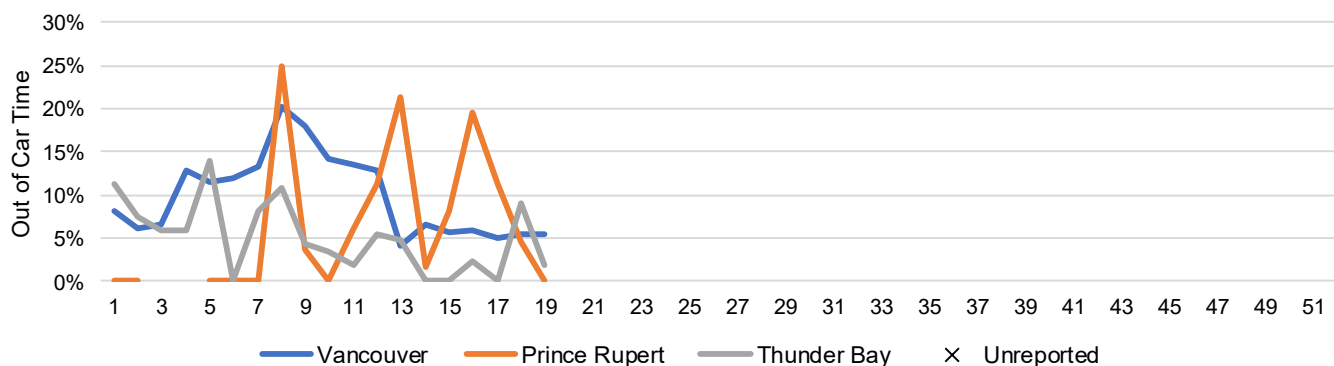
3-E Prince Rupert Terminal Unloads (cars), Total by Carrier, This Year vs. Last Year and the 3-Year Average



3-F Thunder Bay Terminal Unloads (cars), Total by Carrier, This Year vs. Last Year and the 3-Year Average



3-G Weekly Out-of-Car Time (% of hours out-of-cars / total hours working)



Out-of-car time is measured weekly and uses data from terminal elevators on the total number of hours the facilities are open & staffed (including overtime hours) and the corresponding number of hours that terminals have no railcars available to unload. The measure is expressed as a percentage (hours without cars to the total number of hours working).

3-H Monthly Unloads (cars) – This Year vs. Last Year and the 3-Year Average to Week 17 2025-26

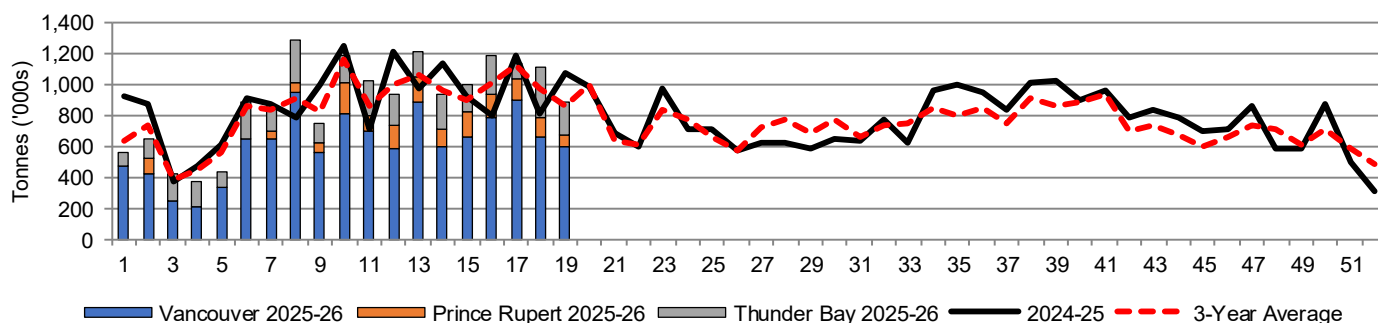
Months	Aug	Sep	Oct	Nov	Dec	Jan	Feb	Mar	Apr	May	Jun	Jul
Weeks	1-4	5-8	9-13	14-17	18-22	23-26	27-30	31-34	35-39	40-43	44-47	48-52
2025-26	19,847	39,408	58,289	45,789	-	-	-	-	-	-	-	-
2024-25	28,103	37,927	55,870	41,829	42,324	30,188	25,580	34,401	51,849	37,116	31,941	29,346
3-Yr Avg.	22,036	35,860	54,460	41,095	41,303	28,601	29,124	32,312	46,300	32,165	26,762	33,141
Var % to Last Year	-29%	4%	4%	9%								
Var % to 3-Yr Avg.	-10%	10%	7%	11%								

4. Shipments

4-A Shipments from Port Terminals ('000 tonnes) – This Year-to-Date as at Week 19 and Variance to Last Year-to-Date

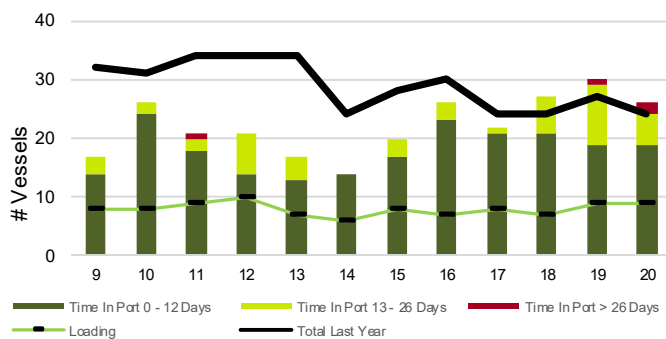
	Vancouver	Prince Rupert	West Coast	Thunder Bay	Churchill	Total
2025-26	11,677.4	1,664.7	13,342.1	3,485.5	-	16,827.6
2024-25	11,749.8	1,727.0	13,476.8	3,387.4	-	16,864.2
3-Yr Avg.	11,445.8	1,394.4	12,840.2	3,247.9	-	16,088.1
Var % to Last Year	-1%	-4%	-1%	3%	n/a	0%
Var % to 3-Yr Avg.	2%	19%	4%	7%	n/a	5%

4-B Weekly Shipments ('000 tonnes) from Port Terminals – This Year vs Last Year and the 3-Year Average

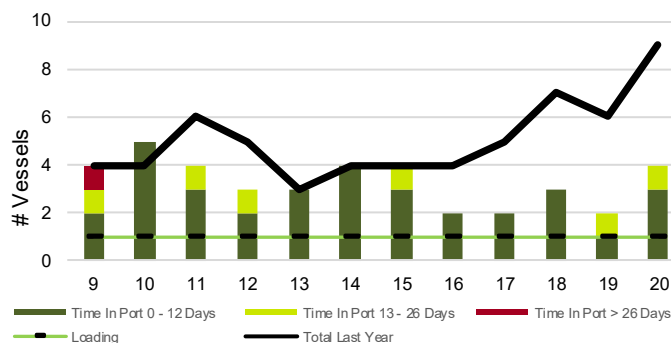


5. Vessels

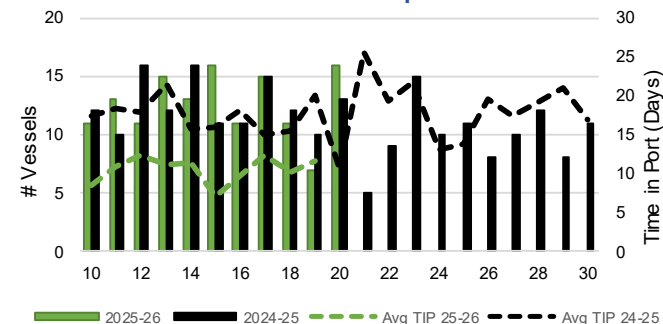
5-A Vessel Lineup at Vancouver as of Week 20 2025-26



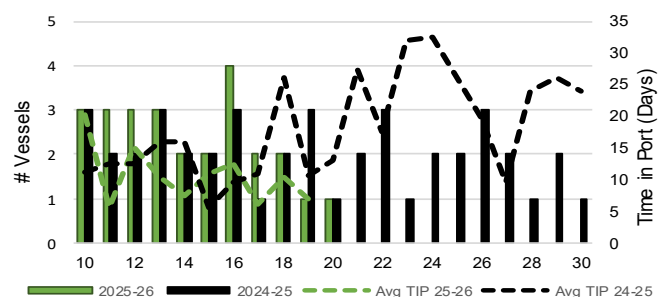
5-C Vessel Lineup at Prince Rupert as of Week 20 2025-26



5-B Vessels Cleared at Vancouver up to Week 20 2025-26



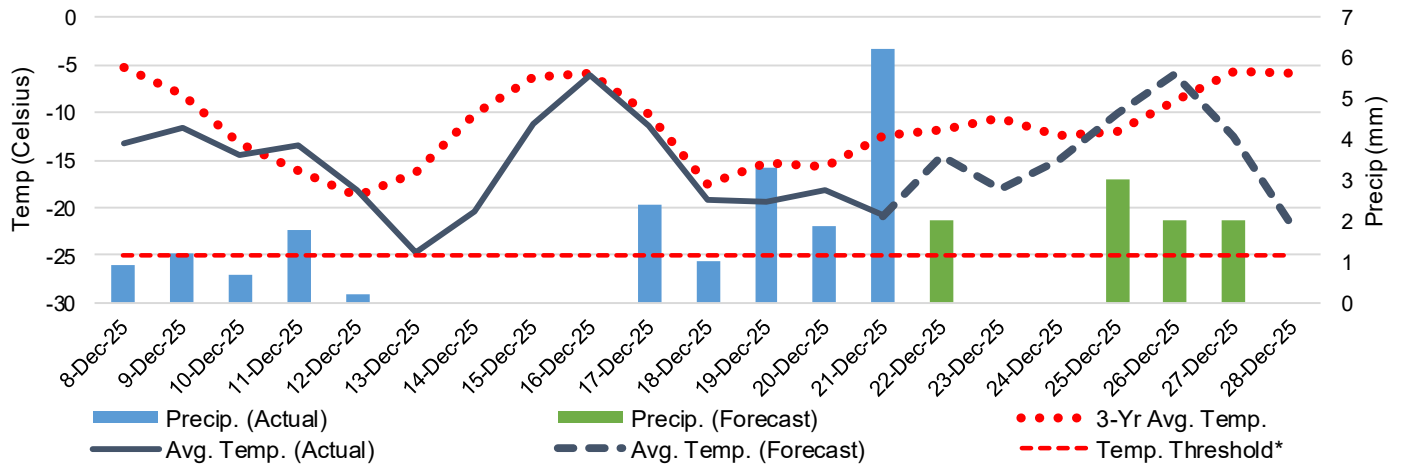
5-D Vessels Cleared at Prince Rupert up to Week 20 2025-26



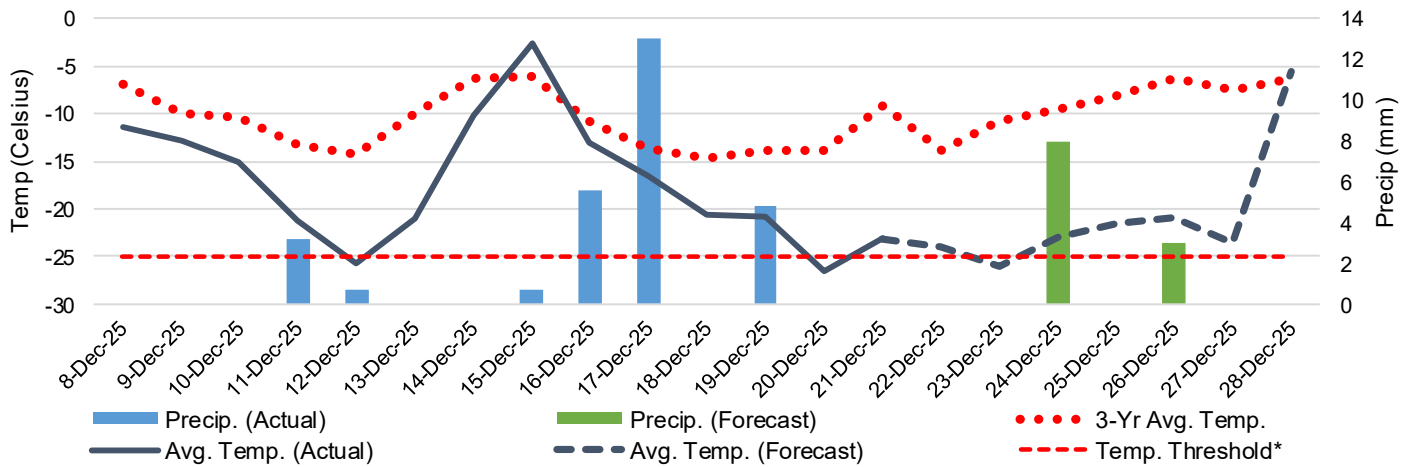
Note: The 'Time in Port' measure for 5-A and 5-C is calculated as how long each vessel in the lineup has been in port as at Sunday 23:59 of that grain week. The 'Avg Time in Port (TIP)' measure for 5-B and 5-D is the average number of days that all vessels which cleared that week were in port. These measures use vessel data provided by the BC Chamber of Shipping and Pacific Pilotage Authority.

6. Weather

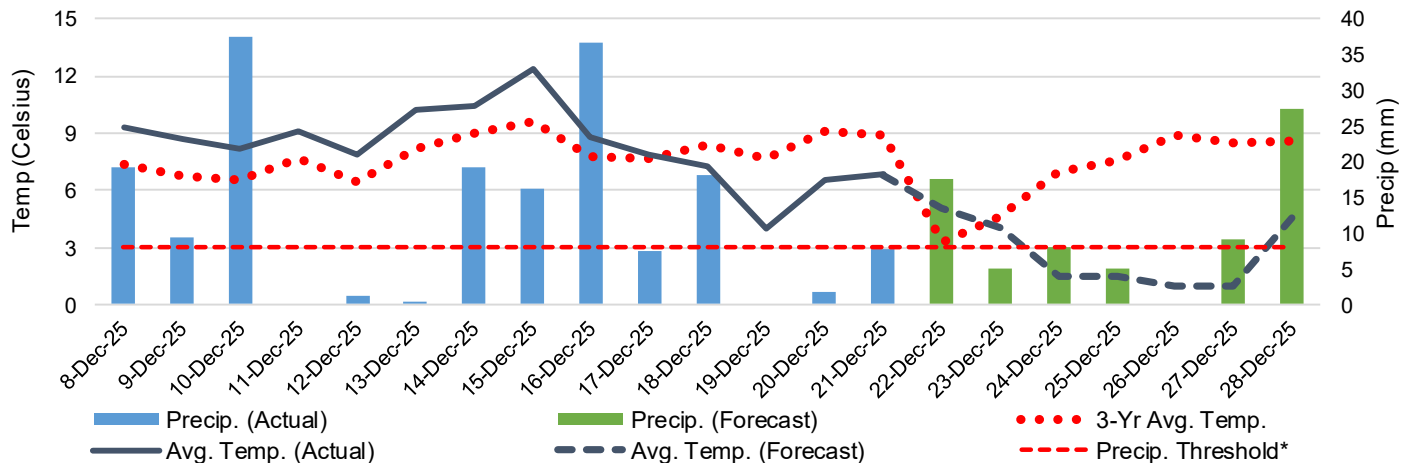
6-A Actual and Forecasted Weather at Winnipeg up to Week 21 2025-26



6-B Actual and Forecasted Weather at Edmonton up to Week 21 2025-26



6-C Actual and Forecasted Weather at Vancouver up to Week 21 2025-26



*Note: Precip Threshold refers to 8mm of rain. At this level of precipitation, vessel loading may be delayed. The duration of the delay will be dependent on the ship, the duration of rainfall, and the amount of precipitation. 8mm is a general guideline and is not meant to be a definitive limit.
Source: Environment and Climate Change Canada, The Weather Network (Forecast)