

# Grain Monitoring Program

## Weekly Performance Update

February 3, 2026

For Grain Week 25 2025-26 CY  
January 19, 2026 to January 25, 2026

### Summary

	Week 25	Week 24	Var. from Last Year	
<b>1. Stocks in Store ('000 tonnes)</b>				
Country Elevators	↑ 3,543.6	3,453.7	-6%	
% of Working Capacity	66%	65%		
Terminal Elevators	↓ 1,257.2	1,308.9	29%	
% of Working Capacity	65%	68%		
<b>2. Country Deliveries ('000 tonnes)</b>				
Country Deliveries	↓ 985.5	1,225.5	-12%	
<b>3. Port Performance (Cars)</b>				
Vancouver Unloads	↑ 7,376	6,566	49%	
Prince Rupert Unloads	↓ 959	1,382	-11%	
Churchill Unloads	— 0	0	n/a	
Thunder Bay Unloads	— 0	0	-100%	
Total Weekly Unloads	↑ 8,335	7,948	38%	
4-Week Rolling Average	↑ 8,008	7,525	4%	
Var. to 4-Week Rolling Average	4%	6%		
YTD Unloads	232,305	223,970	2%	
Weekly Out-of-Car Time	↑ 18.6%	7.1%	-28.0%	
<b>4. Terminal Shipments Year-to-Date ('000 tonnes)</b>				
Vancouver	↑ 15,464.3	14,622.1	2%	
Prince Rupert	↑ 2,324.0	2,294.0	-2%	
Churchill	— 0.0	0.0	n/a	
Thunder Bay	— 4,082.2	4,082.2	1%	
Total Western Canada	↑ 21,870.5	20,998.3	2%	
<b>5. Vessels as at Feb 1, 2026</b>				
	Week 26	Week 25	Var. from Last Year	
Vancouver	Vessel Lineup in port	↑ 30	21	-6%
	Vessels Cleared	↓ 9	14	13%
	Vessels Arrived	↑ 18	8	20%
Pr. Rupert	Vessel Lineup in port	— 3	3	-50%
	Vessels Cleared	↑ 2	1	-33%
	Vessels Arrived	— 2	2	-33%
<b>Vessels Inbound Feb 02, 2026 to Feb 08, 2026 (Week 27)</b>				
Vancouver	14			
Prince Rupert	2			
<b>6. Weather</b>				
	Week 25 Actual	Week 26 Actual	Week 27 Forecast	
Winnipeg Days < -25°C	4	0	0	
Edmonton Days < -25°C	0	0	0	
Vancouver Days Precip > 8mm	0	5	3	

#### 1. Stocks in Store: (Page 2)

- Country stocks increased to 3.54 MMT in Week 25 utilizing 66% of the system's working capacity. Space in primary elevators is good.
- Total western port terminal stocks decreased to 1.26 MMT in Week 25, utilizing 65% of the working capacity.

#### 2. Country Deliveries: (Page 3)

- Deliveries to primary elevators were 0.99 MMT in Week 25.

#### 3. Port Performance: (Pages 3-5)

- Total western port unloads were 4% higher than the 4-week moving average and 38% higher than Week 25 last year.
- West Coast unloads were 8,335 cars (Vancouver 7,376 and Prince Rupert 959), 10% higher than the 4-week moving average and 38% higher than Week 25 last year.
- Thunder Bay had no unloads, 100% lower than the 4-week moving average and 100% lower than Week 25 last year.
- The total average terminal out-of-car time (OCT) increased to 18.6% from 7.1% the previous week. The OCT for Week 25 was 14.7% at Vancouver and 41.4% at Prince Rupert.

#### 4. Shipments: (Page 5)

- Year-to-date Western Canadian shipments from port terminal elevators at Week 25 are 2% higher than the same period last year and 6% higher than the 3-year average.
- The Great Lakes – St. Lawrence Seaway System is closed until March 2026.

#### 5. Vessels: (Page 5)

- Vancouver vessel lineup for Week 26 2025-26 increased to 30 vessels (The current one-year average at Vancouver is 21 vessels). Of the 30, 9 were at berth, 12 were anchored at English Bay, 1 was anchored at Burrard Inlet, and 8 were anchored at Vancouver Island.
- Prince Rupert vessel lineup for Week 26 2025-26 remained at 3 vessels (The current one-year average at Prince Rupert is 3 vessels).
- Vessels cleared from Vancouver was 9 and from Prince Rupert was 2 in Week 26 2025-26.

#### 6. Weather: (Page 6)

- Temperatures across the prairies are forecasted to remain above -25C. Railways are not expected to invoke their winter operating plans.
- Vancouver is forecast to receive high precipitation during Week 27 which may impact the ability to load grain into vessels.

# 1. Stocks in Store

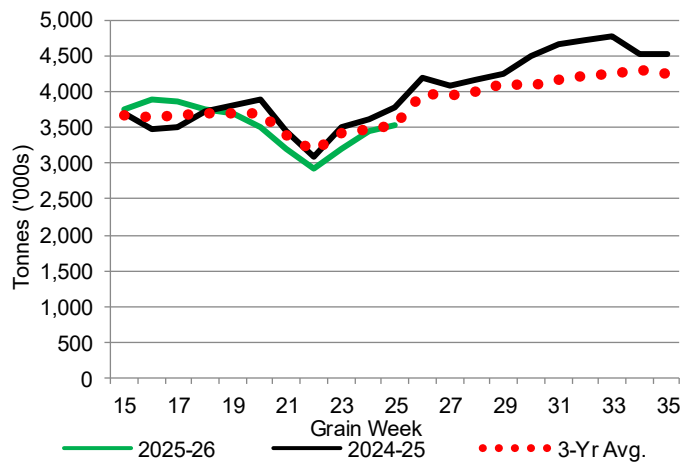
1-A1 Country Stocks ('000 tonnes) – Week 25

	MB	SK	AB	BC	Total
2025-26	686.1	1,558.1	1,289.4	10.0	3,543.6
2024-25	738.1	1,879.3	1,145.7	15.9	3,779.0
3-Yr Avg.	707.6	1,663.2	1,156.5	13.7	3,541.0
Var % - LY	-7%	-17%	13%	-37%	-6%
Var % 3-Yr Avg.	-3%	-6%	11%	-27%	0%
Storage Capacity	1,631.3	4,053.8	2,492.3	30.6	8,208.0
Estimated Working Capacity	1,060.3	2,635.0	1,620.0	19.9	5,335.2
25-26 % of Wkg Cap	65%	59%	80%	50%	66%

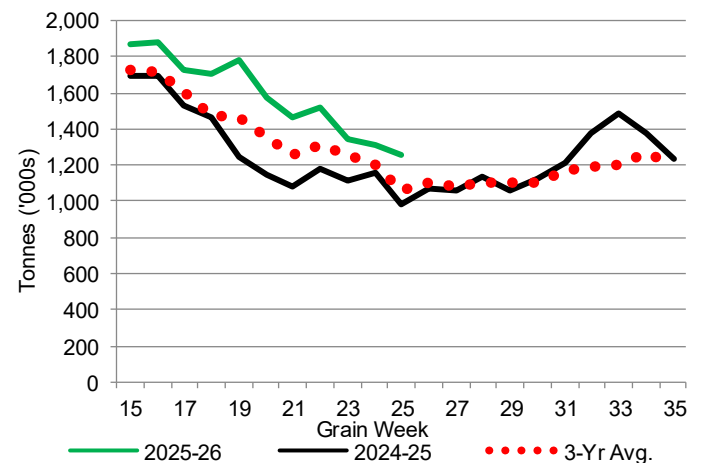
1-B1 Terminal Stocks ('000 tonnes) – Week 25

	VC	PR	West Coast	CH	TB	Total
2025-26	796.5	119.8	916.3	0.7	340.2	1,257.2
2024-25	551.2	93.0	644.2	0.7	333.5	978.4
3-Yr Avg.	659.6	97.0	756.6	0.7	297.5	1,054.8
Var % - LY	45%	29%	42%	0%	2%	28%
Var % 3-Yr Avg.	21%	24%	21%	0%	14%	19%
Storage Capacity	1,275.5	209.5	1,485.0	140.0	1,127.5	2,752.5
Estimated Working Capacity	892.9	146.7	1,039.6	98.0	789.2	1,926.8
25-26 % of Wkg Cap	89%	82%	88%	1%	43%	65%

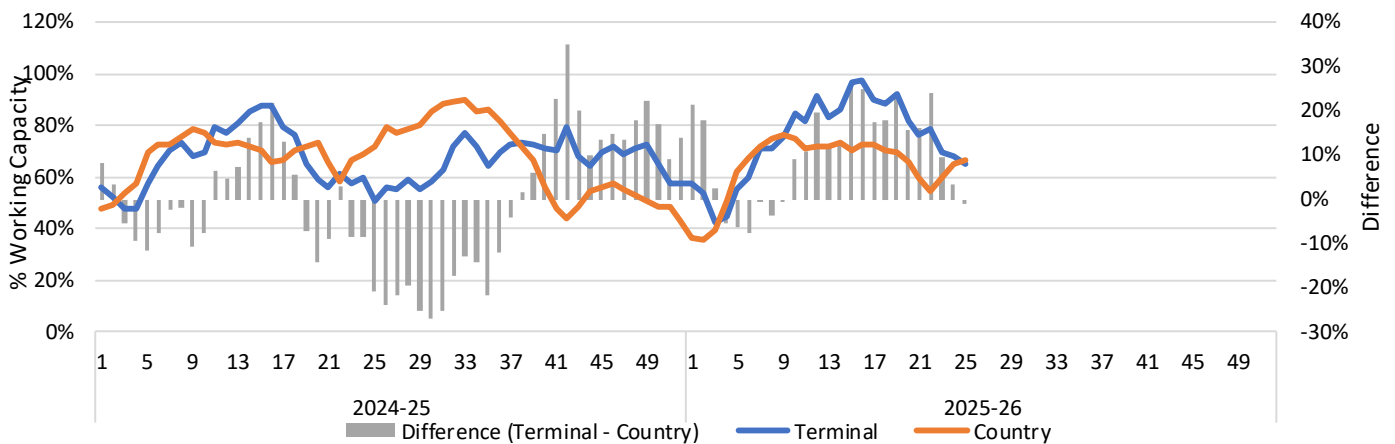
1-A2 Weekly Country Stocks in Store



1-B2 Weekly Terminal Stocks in Store



1-C Weekly Stock Balance

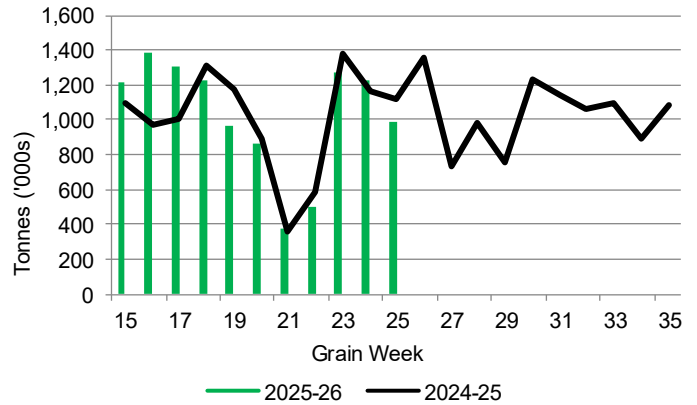


## 2. Country Deliveries

2-A Country Deliveries ('000 tonnes) – Week 25

	MB	SK	AB	BC	Total
2025-26	102.2	486.3	391.3	5.7	985.5
2024-25	123.1	593.1	391.1	6.4	1,113.7
4 Wk Avg	116.1	529.2	345.8	4.6	995.7
Var % to Last Year	-17%	-18%	0%	-11%	-12%
Var % To 4 Wk Avg	-12%	-8%	13%	24%	-1%

2-B 2025-26 Weekly Country Deliveries



## 3. Port Performance

3-A Weekly Unloads by Port (Cars) – This Year for Week 25, 4-Week Moving Average and Variances

	Vancouver	Prince Rupert	West Coast	Thunder Bay	Churchill	Total
2025-26	7,376	959	8,335	-	-	8,335
2024-25	4,951	1,081	6,032	1	n/a	6,033
4-Wk Avg.	6,521	1,025	7,546	462	-	8,008
Var % to Last Year	49%	-11%	38%	-100%	n/a	38%
Var % to 4-Wk Avg.	13%	-6%	10%	-100%	n/a	4%

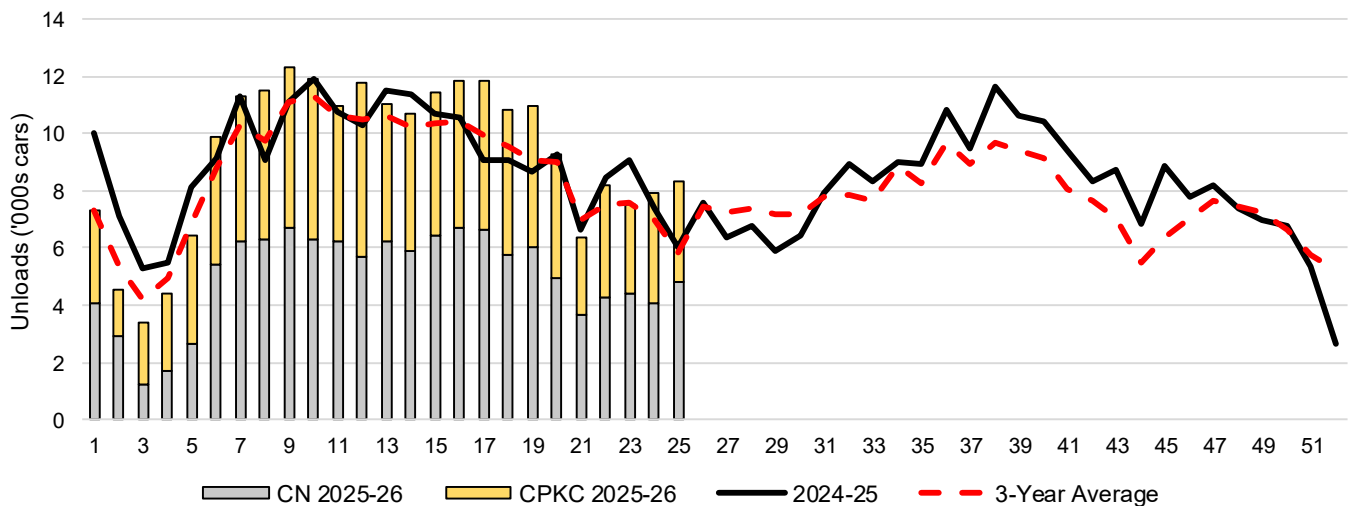
3-B Terminal Unloads by Port – This Year-to-Date as at Week 25 and Variances

YTD Unloads (cars)	Vancouver	Prince Rupert	West Coast	Thunder Bay	Churchill	Total
2025-26	159,460	24,650	184,110	48,195	-	232,305
2024-25	158,541	24,308	182,849	44,669	-	227,518
3-Yr Avg	150,699	20,311	171,010	44,242	-	215,252
Var % to Last Year	1%	1%	1%	8%	n/a	2%
Var % to 3-Yr Avg	6%	21%	8%	9%	n/a	8%

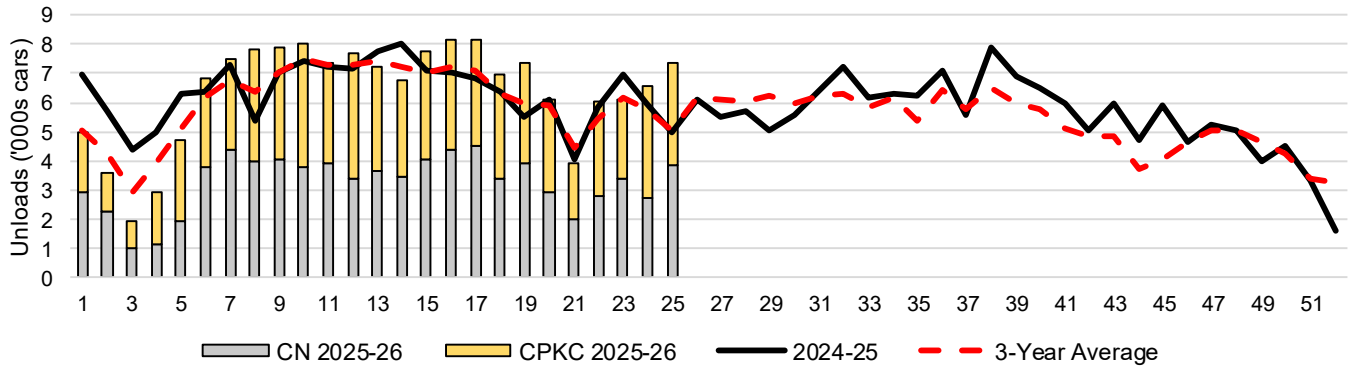
  

YTD Unloads ('000 tonnes)	Vancouver	Prince Rupert	West Coast	Thunder Bay	Churchill	Total
2025-26	15,422.1	2,390.2	17,812.3	4,671.2	-	22,483.5
2024-25	15,125.6	2,341.7	17,467.3	4,337.6	-	21,804.9
3-Yr Avg.	14,485.4	1,966.5	16,451.9	4,294.6	-	20,746.4
Var % to Last Year	2%	2%	2%	8%	n/a	3%
Var % to 3-Yr Avg.	6%	22%	8%	9%	n/a	8%

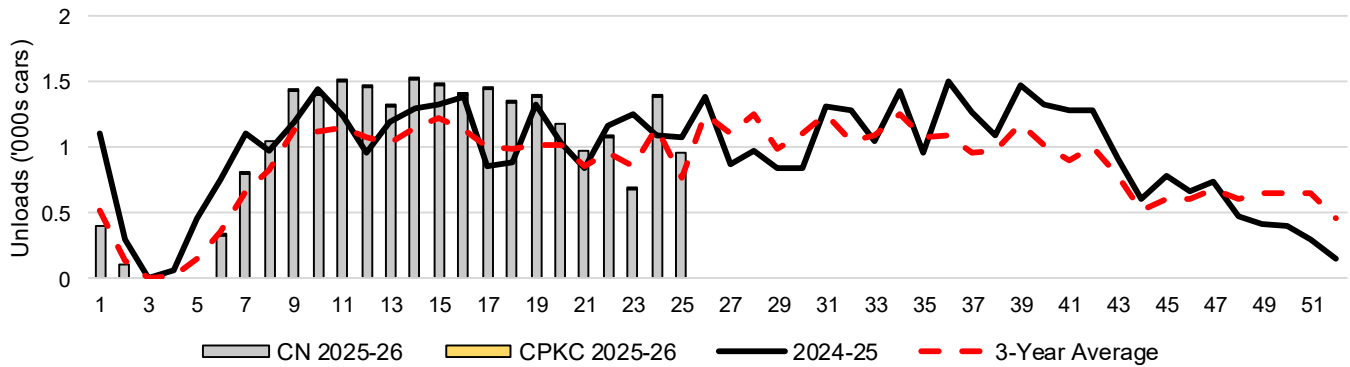
3-C Western Port Terminal Unloads (cars), Total by Carrier, This Year vs. Last Year and the 3-Year Average



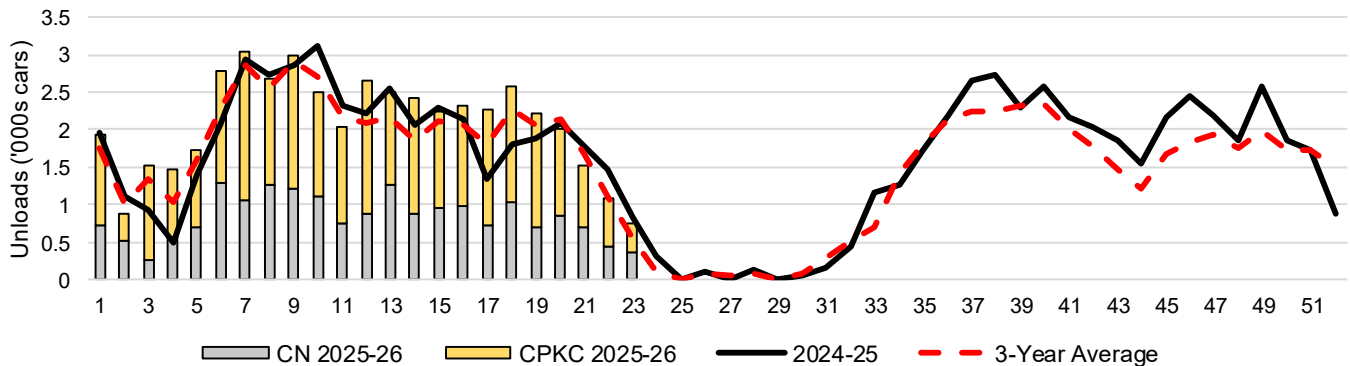
### 3-D Vancouver Terminal Unloads (cars), Total by Carrier, This Year vs. Last Year and the 3-Year Average



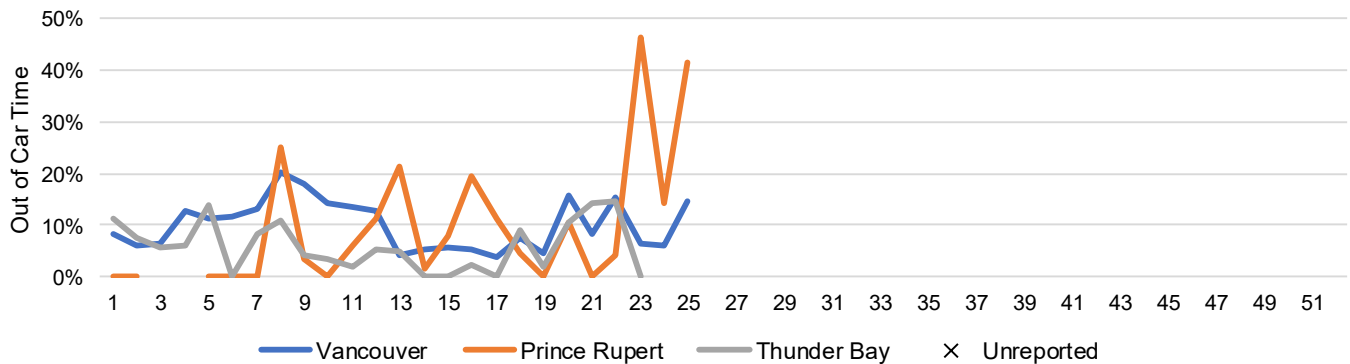
### 3-E Prince Rupert Terminal Unloads (cars), Total by Carrier, This Year vs. Last Year and the 3-Year Average



### 3-F Thunder Bay Terminal Unloads (cars), Total by Carrier, This Year vs. Last Year and the 3-Year Average



### 3-G Weekly Out-of-Car Time (% of hours out-of-cars / total hours working)



Out-of-car time is measured weekly and uses data from terminal elevators on the total number of hours the facilities are open & staffed (including overtime hours) and the corresponding number of hours that terminals have no railcars available to unload. The measure is expressed as a percentage (hours without cars to the total number of hours working).

### 3-H Monthly Unloads (cars) – This Year vs. Last Year and the 3-Year Average to Week 22 2025-26

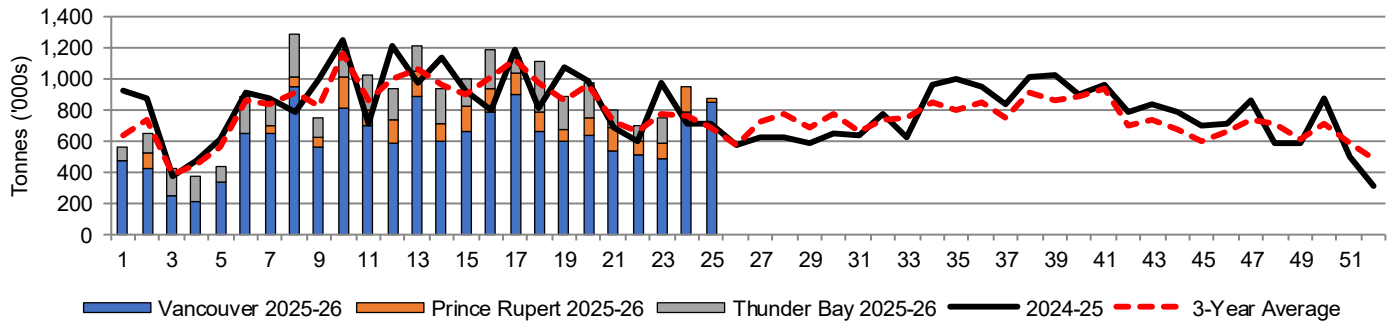
Months	Aug	Sep	Oct	Nov	Dec	Jan	Feb	Mar	Apr	May	Jun	Jul
Weeks	1-4	5-8	9-13	14-17	18-22	23-26	27-30	31-34	35-39	40-43	44-47	48-52
2025-26	19,698	39,195	57,999	45,883	45,720	-	-	-	-	-	-	-
2024-25	27,951	37,723	55,616	41,691	42,065	30,063	25,510	34,219	51,573	36,877	31,705	29,163
3-Yr Avg.	21,886	35,667	54,167	41,012	42,120	28,464	29,008	32,153	46,068	31,924	26,591	32,929
Var % to Last Year	-30%	4%	4%	10%	9%							
Var % to 3-Yr Avg.	-10%	10%	7%	12%	9%							

## 4. Shipments

### 4-A Shipments from Port Terminals ('000 tonnes) – This Year-to-Date as at Week 25 and Variance to Last Year-to-Date

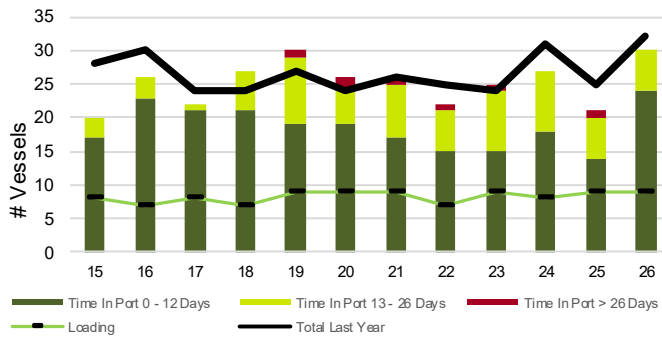
	Vancouver	Prince Rupert	West Coast	Thunder Bay	Churchill	Total	
2025-26	15,464.3	2,324.0	17,788.3	4,082.2	-	21,870.5	
2024-25	15,107.2	2,361.4	17,468.6	4,046.5	-	21,515.1	
3-Yr Avg.	14,741.4	1,958.1	16,699.5	3,946.6	-	20,646.1	
Var % to Last Year		2%	-2%	2%	1%	n/a	2%
Var % to 3-Yr Avg.		5%	19%	7%	3%	n/a	6%

### 4-B Weekly Shipments ('000 tonnes) from Port Terminals – This Year vs Last Year and the 3-Year Average

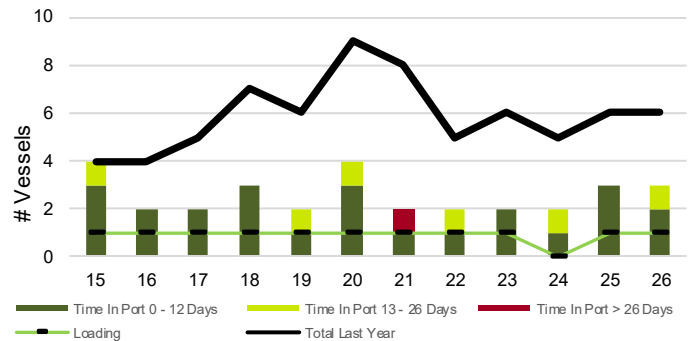


## 5. Vessels

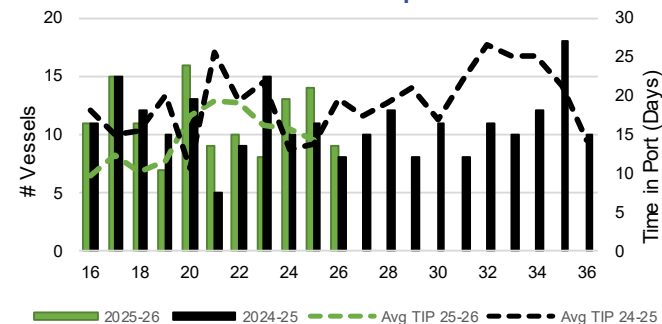
### 5-A Vessel Lineup at Vancouver as of Week 26 2025-26



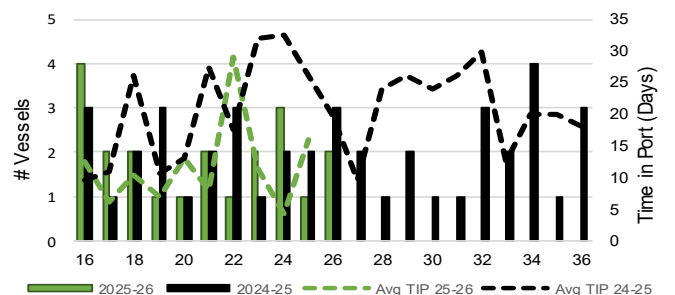
### 5-C Vessel Lineup at Prince Rupert as of Week 26 2025-26



### 5-B Vessels Cleared at Vancouver up to Week 26 2025-26



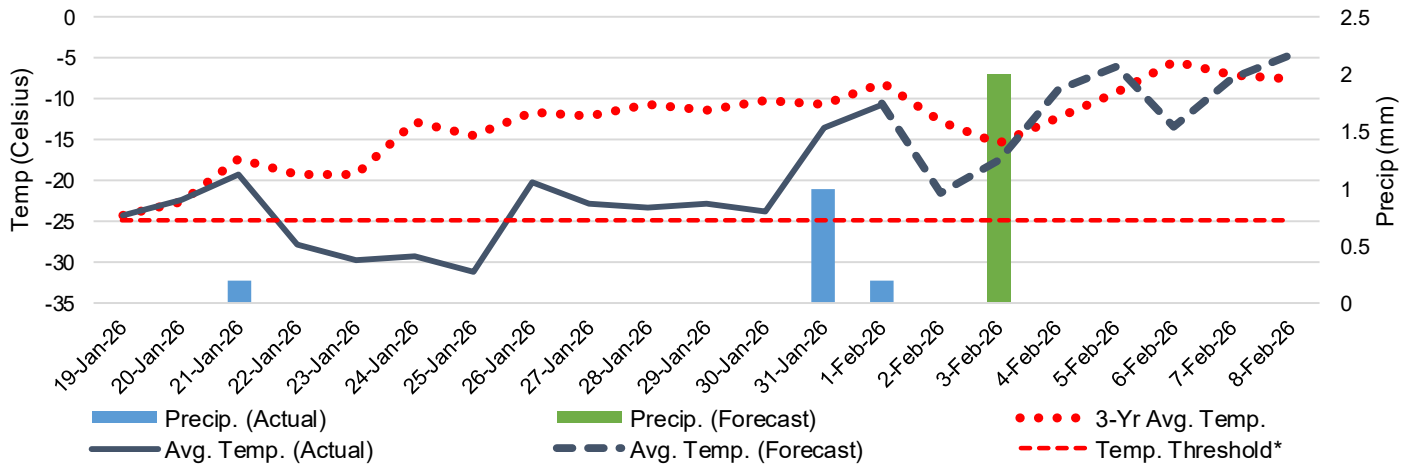
### 5-D Vessels Cleared at Prince Rupert up to Week 26 2025-26



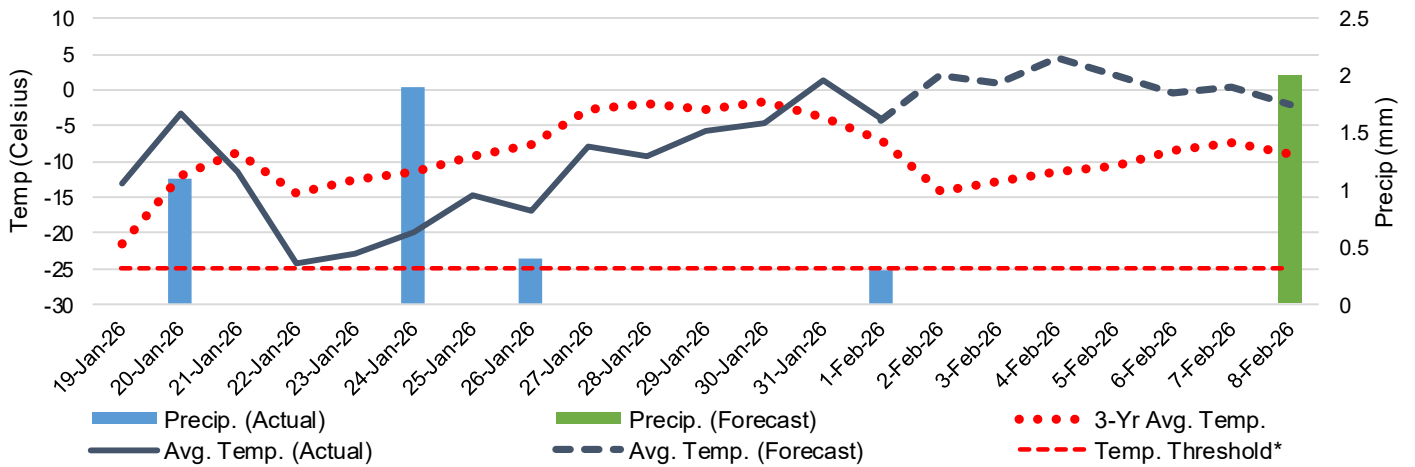
Note: The 'Time in Port' measure for 5-A and 5-C is calculated as how long each vessel in the lineup has been in port as at Sunday 23:59 of that grain week. The 'Avg Time in Port (TIP)' measure for 5-B and 5-D is the average number of days that all vessels which cleared that week were in port. These measures use vessel data provided by the BC Chamber of Shipping and Pacific Pilotage Authority.

# 6. Weather

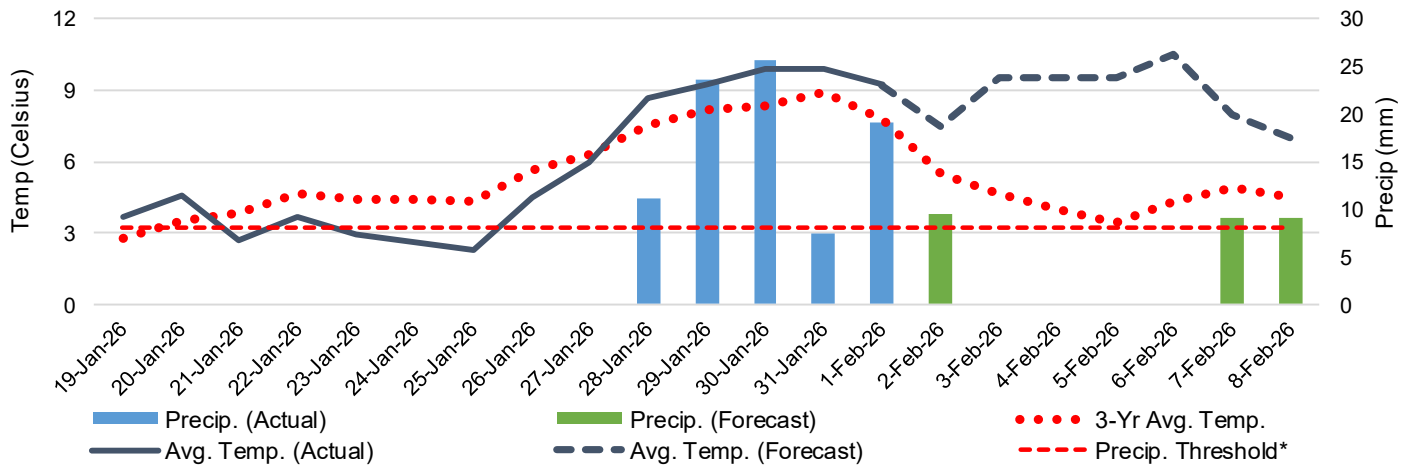
6-A Actual and Forecasted Weather at Winnipeg up to Week 27 2025-26



6-B Actual and Forecasted Weather at Edmonton up to Week 27 2025-26



6-C Actual and Forecasted Weather at Vancouver up to Week 27 2025-26



\*Note: Precip Threshold refers to 8mm of rain. At this level of precipitation, vessel loading may be delayed. The duration of the delay will be dependent on the ship, the duration of rainfall, and the amount of precipitation. 8mm is a general guideline and is not meant to be a definitive limit.  
Source: Environment and Climate Change Canada, The Weather Network (Forecast)