

Grain Monitoring Program

Weekly Performance Update

February 10, 2026

For Grain Week 26 2025-26 CY
January 26, 2026 to February 01, 2026

Summary

Summary		Week 26	Week 25	Var. from Last Year	
1. Stocks in Store ('000 tonnes)					
Country Elevators	↑	3,703.2	3,543.6	-12%	
% of Working Capacity		69%	66%		
Terminal Elevators	↑	1,475.0	1,257.2	38%	
% of Working Capacity		77%	65%		
2. Country Deliveries ('000 tonnes)					
Country Deliveries	↑	1,310.8	985.5	-3%	
3. Port Performance (Cars)					
Vancouver Unloads	↓	6,873	7,432	13%	
Prince Rupert Unloads	↓	860	959	-38%	
Churchill Unloads	—	0	0	n/a	
Thunder Bay Unloads	—	0	0	-100%	
Total Weekly Unloads	↓	7,733	8,391	2%	
4-Week Rolling Average	↓	7,900	8,022	5%	
Var. to 4-Week Rolling Average		-2%	5%		
YTD Unloads		240,092	232,359	2%	
Weekly Out-of-Car Time	↑	20.3%	18.6%	-4.0%	
4. Terminal Shipments Year-to-Date ('000 tonnes)					
Vancouver	↑	15,877.8	15,486.3	2%	
Prince Rupert	↑	2,433.4	2,324.0	-2%	
Churchill	—	0.0	0.0	n/a	
Thunder Bay	—	4,082.2	4,082.2	1%	
Total Western Canada	↑	22,393.4	21,892.5	1%	
5. Vessels as at Feb 8, 2026		Week 27	Week 26	Var. from Last Year	
Vancouver	Vessel Lineup in port	↓	21	30	-28%
	Vessels Cleared	↑	17	9	70%
	Vessels Arrived	↓	8	18	14%
Pr. Rupert	Vessel Lineup in port	↓	0	3	-100%
	Vessels Cleared	↑	4	2	100%
	Vessels Arrived	↓	1	2	0%
Vessels Inbound Feb 09, 2026 to Feb 15, 2026 (Week 28)					
Vancouver		22			
Prince Rupert		4			
6. Weather		Week 26 Actual	Week 27 Actual	Week 28 Forecast	
Winnipeg Days < -25°C		0	0	0	
Edmonton Days < -25°C		0	0	0	
Vancouver Days Precip > 8mm		5	2	1	

1. Stocks in Store: (Page 2)

- Country stocks increased to 3.70 MMT in Week 26 utilizing 69% of the system's working capacity. Space in primary elevators is good.
- Total western port terminal stocks increased to 1.48 MMT in Week 26, utilizing 77% of the working capacity. Space at Vancouver is limited.

2. Country Deliveries: (Page 3)

- Deliveries to primary elevators were 1.31 MMT in Week 26.

3. Port Performance: (Pages 3-5)

- Total western port unloads were 2% lower than the 4-week moving average and 2% higher than Week 26 last year.
- West Coast unloads were 7,733 cars (Vancouver 6,873 and Prince Rupert 860), no different than the 4-week moving average and 3% higher than Week 26 last year.
- Thunder Bay had no unloads, 100% lower than the 4-week moving average and 100% lower than Week 26 last year.
- The total average terminal out-of-car time (OCT) increased to 20.3% from 18.6% the previous week. The OCT for Week 26 was 15.6% at Vancouver and 47.4% at Prince Rupert.

4. Shipments: (Page 5)

- Year-to-date Western Canadian shipments from port terminal elevators at Week 26 are 1% higher than the same period last year and 6% higher than the 3-year average.
- The Great Lakes – St. Lawrence Seaway System is closed until March 2026.

5. Vessels: (Page 6)

- Vancouver vessel lineup for Week 27 2025-26 decreased to 21 vessels (The current one-year average at Vancouver is 21 vessels). Of the 21, 8 were at berth, 8 were anchored at English Bay, and 5 were anchored at Vancouver Island.
- Prince Rupert vessel lineup for Week 27 2025-26 decreased to 0 vessels (The current one-year average at Prince Rupert is 3 vessels).
- Vessels cleared from Vancouver was 17 and from Prince Rupert was 4 in Week 27 2025-26.

6. Weather: (Page 6)

- Temperatures across the prairies are forecasted to remain above -25°C. Railways are not expected to invoke their winter operating plans.

1. Stocks in Store

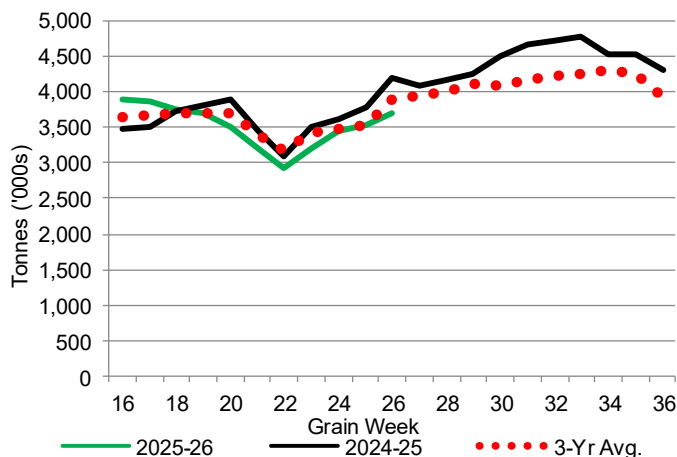
1-A1 Country Stocks ('000 tonnes) – Week 26

	MB	SK	AB	BC	Total
2025-26	622.9	1,739.0	1,326.0	15.3	3,703.2
2024-25	815.3	2,102.4	1,266.3	16.7	4,200.7
3-Yr Avg.	711.1	1,913.1	1,254.7	17.0	3,895.9
Var % - LY	-24%	-17%	5%	-8%	-12%
Var % 3-Yr Avg.	-12%	-9%	6%	-10%	-5%
Storage Capacity	1,631.3	4,053.8	2,492.3	30.6	8,208.0
Estimated Working Capacity	1,060.3	2,635.0	1,620.0	19.9	5,335.2
25-26 % of Wkg Cap	59%	66%	82%	77%	69%

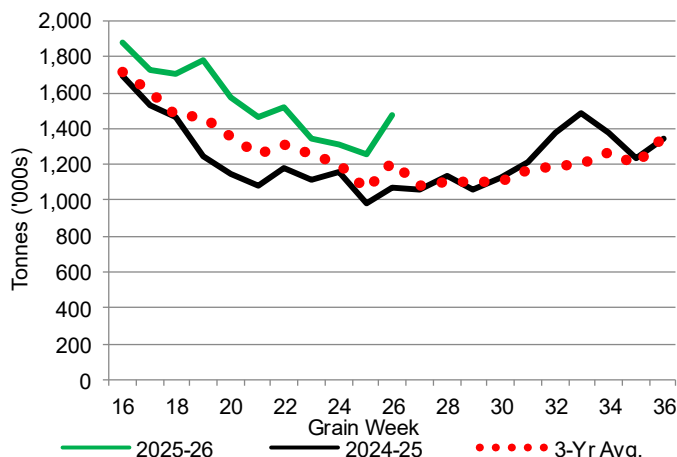
1-B1 Terminal Stocks ('000 tonnes) – Week 26

	VC	PR	West Coast	CH	TB	Total
2025-26	1017.2	113.7	1,130.9	0.7	343.4	1,475.0
2024-25	621.3	106.6	727.9	0.7	342.9	1,071.5
3-Yr Avg.	789.7	115.6	905.3	0.7	301.7	1,207.7
Var % - LY	64%	7%	55%	0%	0%	38%
Var % 3-Yr Avg.	29%	-2%	25%	0%	14%	22%
Storage Capacity	1,275.5	209.5	1,485.0	140.0	1,127.5	2,752.5
Estimated Working Capacity	892.9	146.7	1,039.6	98.0	789.2	1,926.8
25-26 % of Wkg Cap	114%	78%	109%	1%	44%	77%

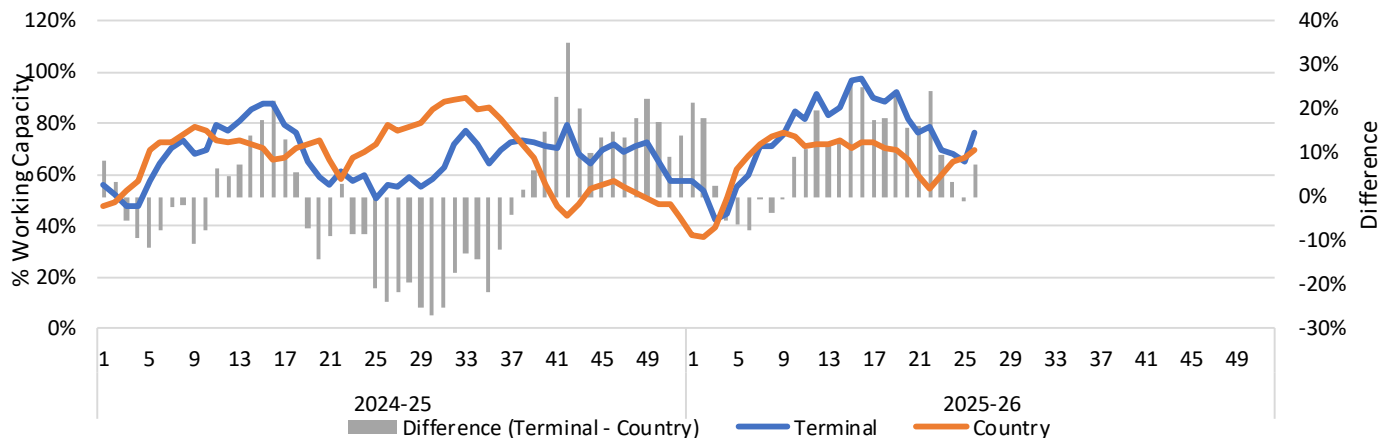
1-A2 Weekly Country Stocks in Store



1-B2 Weekly Terminal Stocks in Store



1-C Weekly Stock Balance

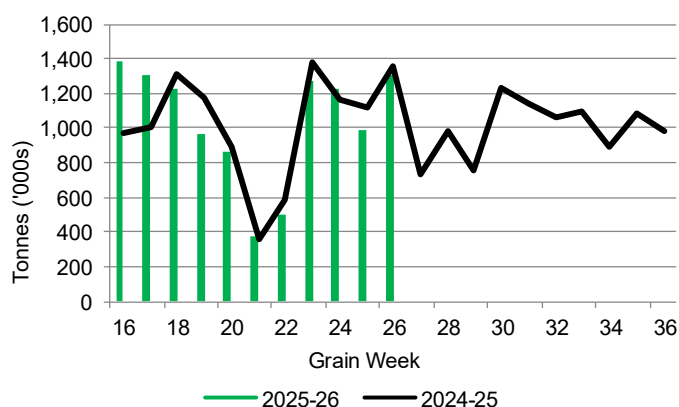


2. Country Deliveries

2-A Country Deliveries ('000 tonnes) – Week 26

	MB	SK	AB	BC	Total
2025-26	138.8	754.2	409.5	8.3	1,310.8
2024-25	210.3	752.3	389.0	5.0	1,356.6
4 Wk Avg	137.0	643.6	410.9	6.6	1,198.1
Var % to Last Year	-34%	0%	5%	66%	-3%
Var % To 4 Wk Avg	1%	17%	0%	26%	9%

2-B 2025-26 Weekly Country Deliveries



3. Port Performance

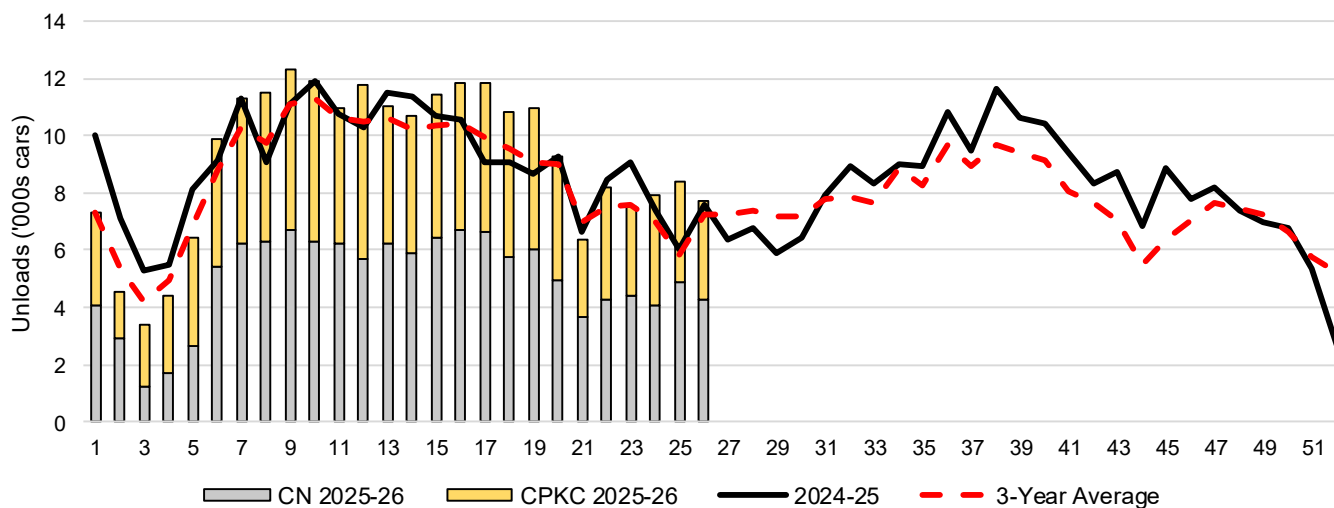
3-A Weekly Unloads by Port (Cars) – This Year for Week 26, 4-Week Moving Average and Variances

	Vancouver	Prince Rupert	West Coast	Thunder Bay	Churchill	Total
2025-26	6,873	860	7,733	-	-	7,733
2024-25	6,102	1,387	7,489	102	n/a	7,591
4-Wk Avg.	6,740	971	7,711	189	-	7,900
Var % to Last Year	13%	-38%	3%	-100%	n/a	2%
Var % to 4-Wk Avg.	2%	-11%	0%	-100%	n/a	-2%

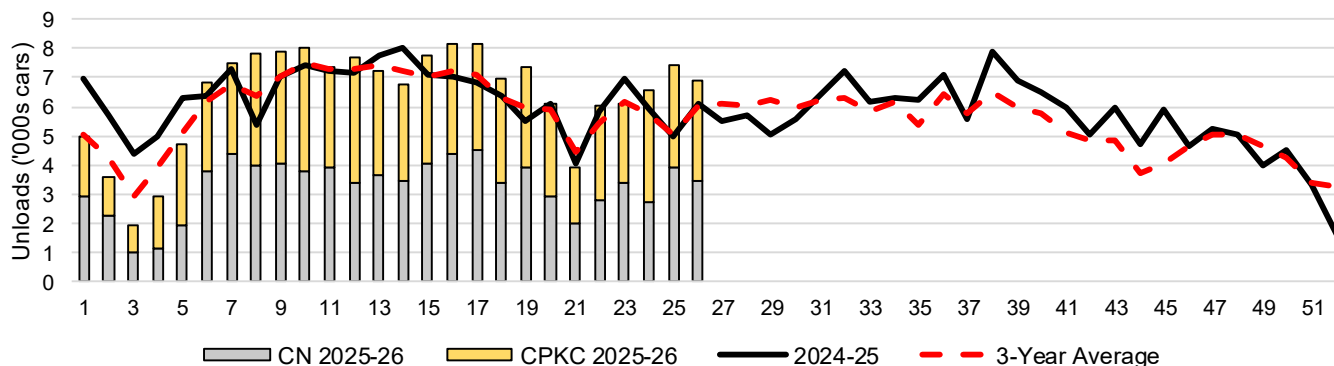
3-B Terminal Unloads by Port – This Year-to-Date as at Week 26 and Variances

YTD Unloads (cars)	Vancouver	Prince Rupert	West Coast	Thunder Bay	Churchill	Total
2025-26	166,388	25,510	191,898	48,194	-	240,092
2024-25	164,643	25,695	190,338	44,771	-	235,109
3-Yr Avg	156,783	21,428	178,211	44,276	-	222,486
Var % to Last Year	1%	-1%	1%	8%	n/a	2%
Var % to 3-Yr Avg	6%	19%	8%	9%	n/a	8%
YTD Unloads ('000 tonnes)						
2025-26	16,090.4	2,474.2	18,564.6	4,671.2	-	23,235.8
2024-25	15,697.3	2,474.6	18,171.9	4,345.6	-	22,517.5
3-Yr Avg.	15,067.9	2,074.8	17,142.6	4,297.2	-	21,439.9
Var % to Last Year	3%	0%	2%	7%	n/a	3%
Var % to 3-Yr Avg.	7%	19%	8%	9%	n/a	8%

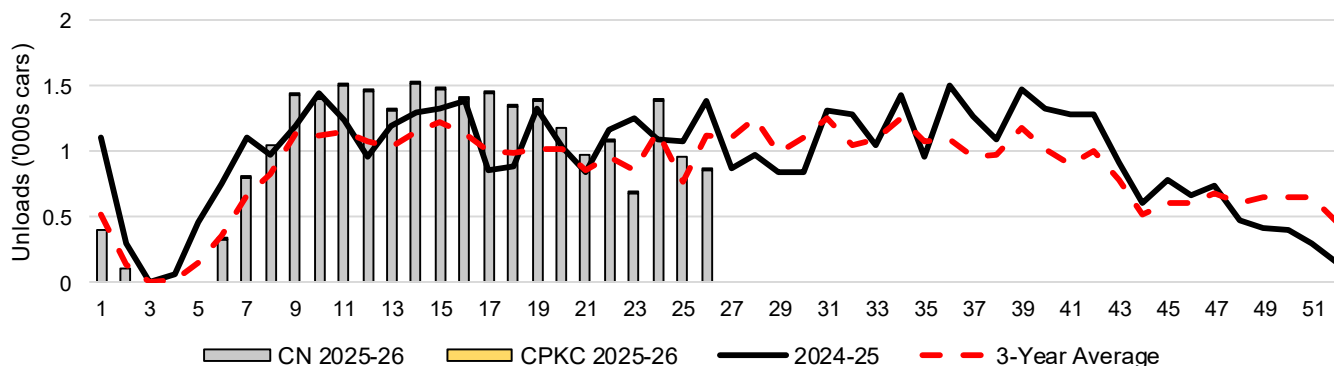
3-C Western Port Terminal Unloads (cars), Total by Carrier, This Year vs. Last Year and the 3-Year Average



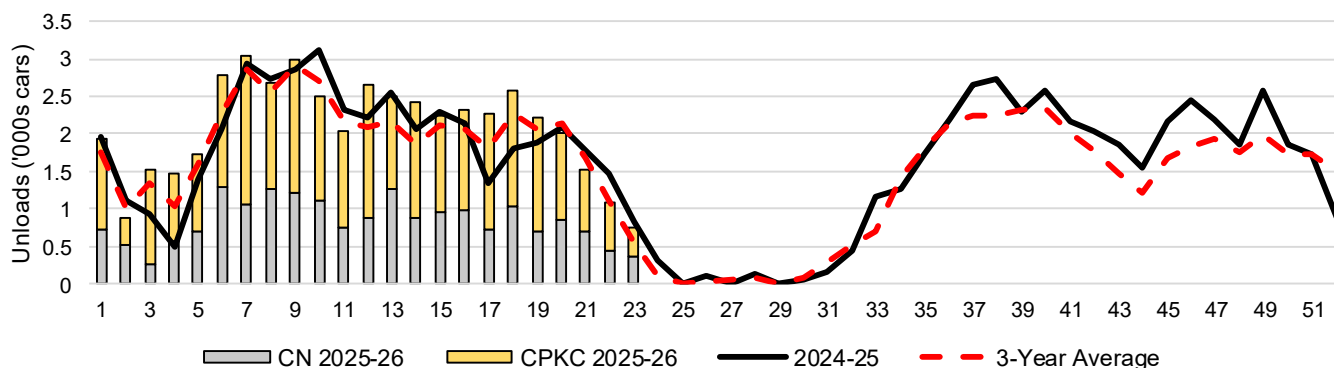
3-D Vancouver Terminal Unloads (cars), Total by Carrier, This Year vs. Last Year and the 3-Year Average



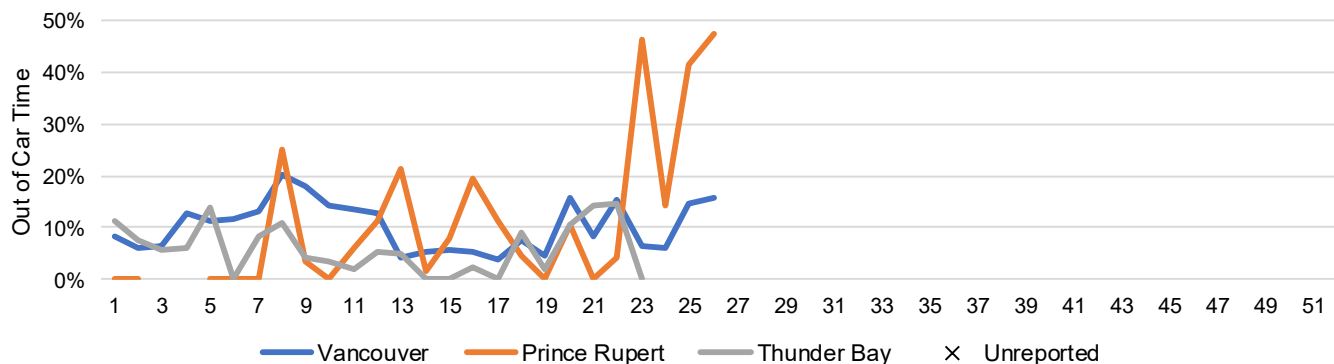
3-E Prince Rupert Terminal Unloads (cars), Total by Carrier, This Year vs. Last Year and the 3-Year Average



3-F Thunder Bay Terminal Unloads (cars), Total by Carrier, This Year vs. Last Year and the 3-Year Average



3-G Weekly Out-of-Car Time (% of hours out-of-cars / total hours working)



Out-of-car time is measured weekly and uses data from terminal elevators on the total number of hours the facilities are open & staffed (including overtime hours) and the corresponding number of hours that terminals have no railcars available to unload. The measure is expressed as a percentage (hours without cars to the total number of hours working).

3-H Monthly Unloads (cars) – This Year vs. Last Year and the 3-Year Average to Week 26 2025-26

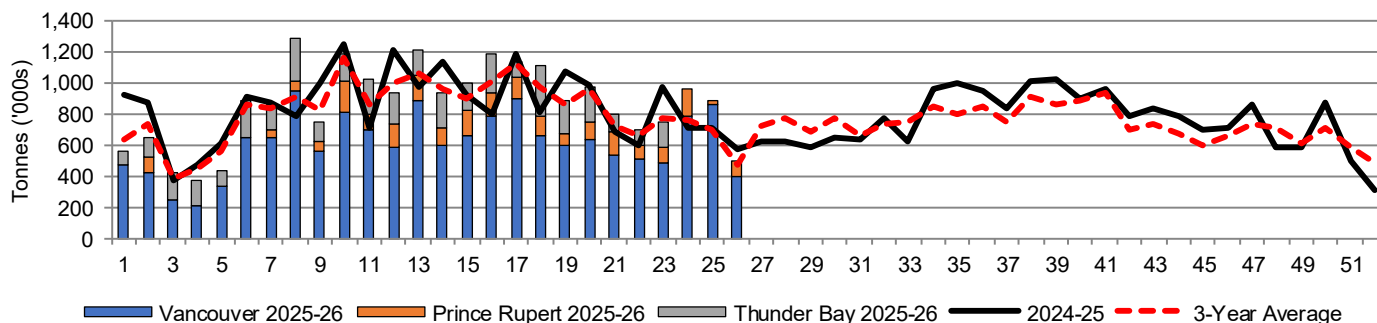
Months	Aug	Sep	Oct	Nov	Dec	Jan	Feb	Mar	Apr	May	Jun	Jul
Weeks	1-4	5-8	9-13	14-17	18-22	23-26	27-30	31-34	35-39	40-43	44-47	48-52
2025-26	19,698	39,195	57,998	45,883	45,719	31,599	-	-	-	-	-	-
2024-25	27,951	37,723	55,616	41,691	42,065	30,063	25,510	34,219	51,573	36,877	31,705	29,163
3-Yr Avg.	21,886	35,667	54,166	41,012	42,119	27,635	29,008	32,153	46,068	31,924	26,591	32,929
Var % to Last Year	-30%	4%	4%	10%	9%	5%						
Var % to 3-Yr Avg.	-10%	10%	7%	12%	9%	14%						

4. Shipments

4-A Shipments from Port Terminals ('000 tonnes) – This Year-to-Date as at Week 26 and Variance to Last Year-to-Date

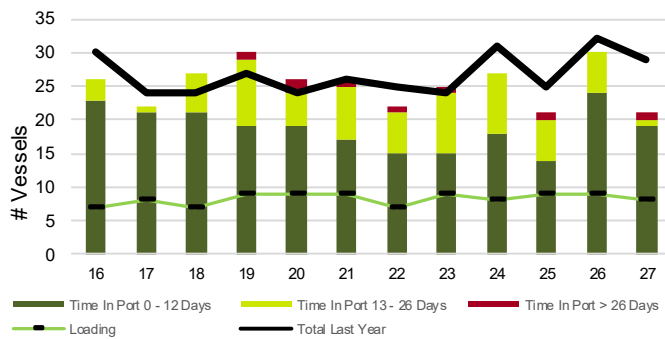
	Vancouver	Prince Rupert	West Coast	Thunder Bay	Churchill	Total
2025-26	15,877.8	2,433.4	18,311.2	4,082.2	-	22,393.4
2024-25	15,553.5	2,487.1	18,040.6	4,046.7	-	22,087.3
3-Yr Avg.	15,126.9	2,056.4	17,183.3	3,946.6	-	21,129.9
Var % to Last Year	2%	-2%	1%	1%	n/a	1%
Var % to 3-Yr Avg.	5%	18%	7%	3%	n/a	6%

4-B Weekly Shipments ('000 tonnes) from Port Terminals – This Year vs Last Year and the 3-Year Average

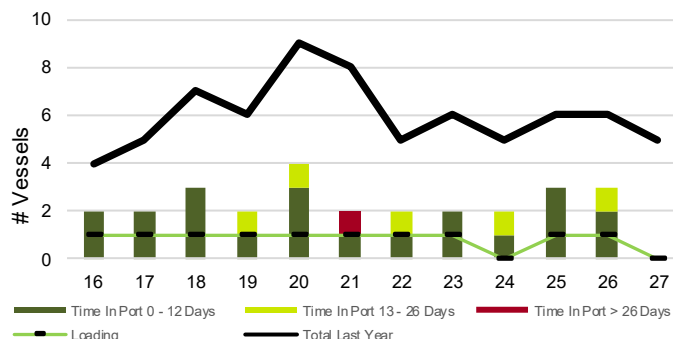


5. Vessels

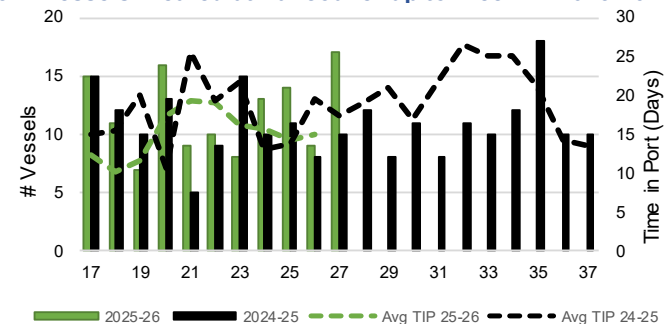
5-A Vessel Lineup at Vancouver as of Week 27 2025-26



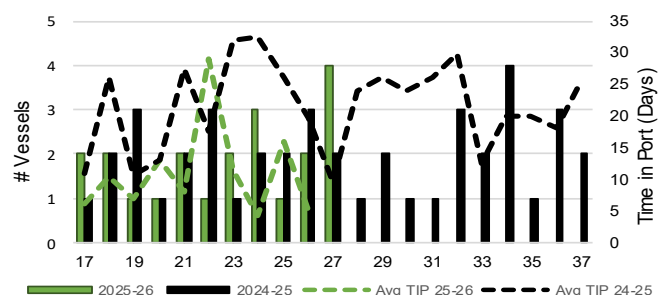
5-C Vessel Lineup at Prince Rupert as of Week 27 2025-26



5-B Vessels Cleared at Vancouver up to Week 27 2025-26



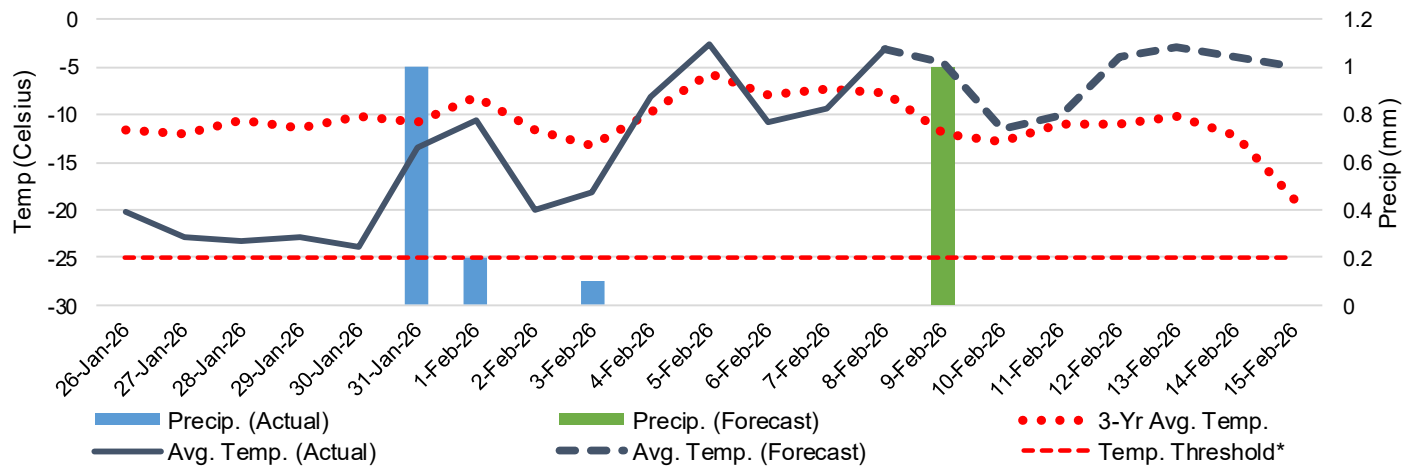
5-D Vessels Cleared at Prince Rupert up to Week 27 2025-26



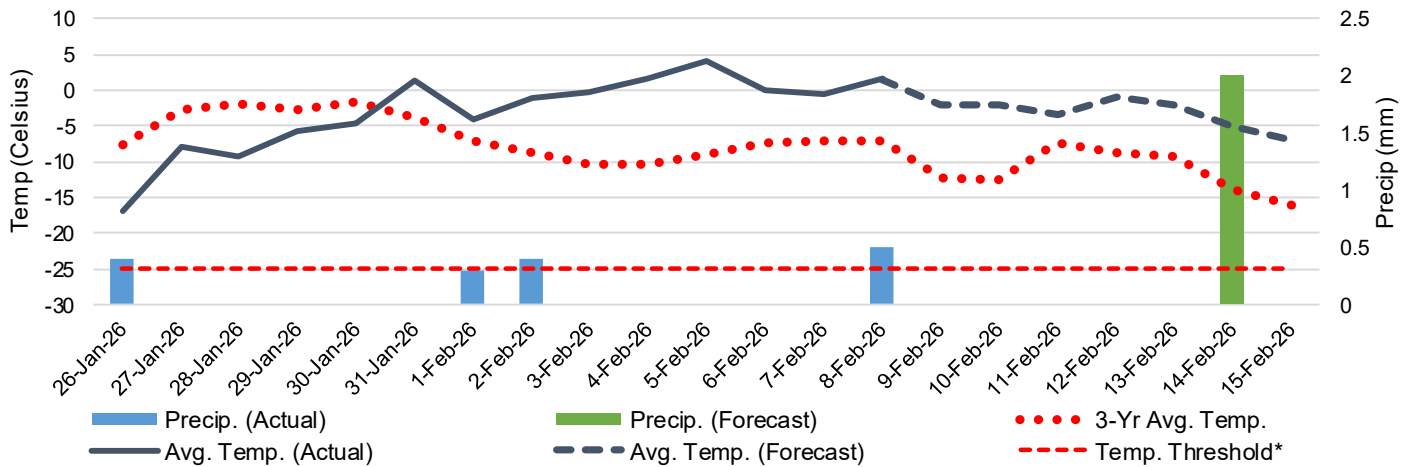
Note: The 'Time in Port' measure for 5-A and 5-C is calculated as how long each vessel in the lineup has been in port as at Sunday 23:59 of that grain week. The 'Avg Time in Port (TIP)' measure for 5-B and 5-D is the average number of days that all vessels which cleared that week were in port. These measures use vessel data provided by the BC Chamber of Shipping and Pacific Pilotage Authority.

6. Weather

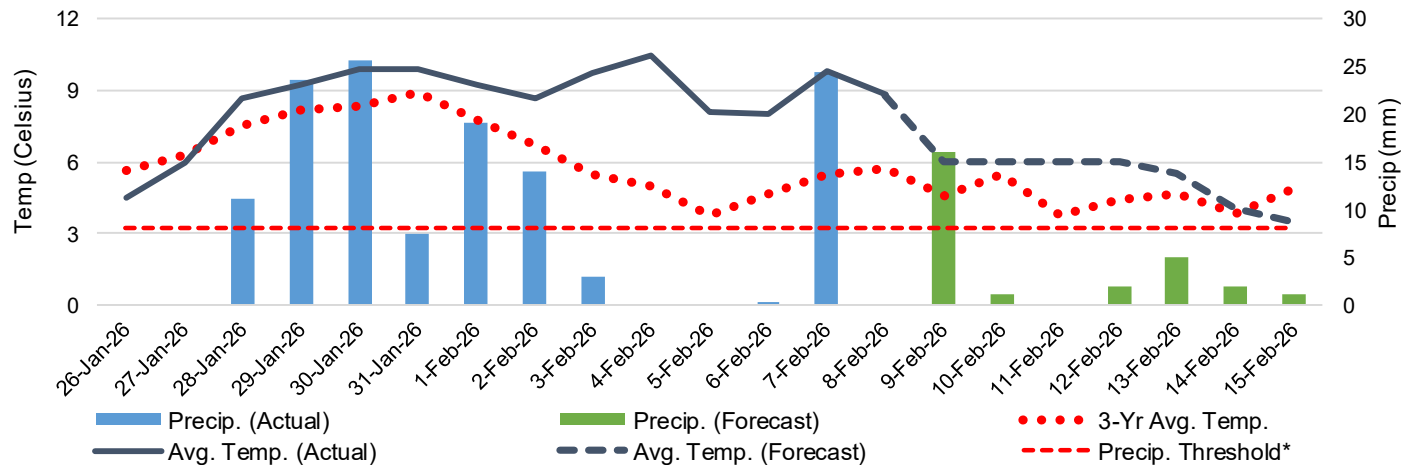
6-A Actual and Forecasted Weather at Winnipeg up to Week 28 2025-26



6-B Actual and Forecasted Weather at Edmonton up to Week 28 2025-26



6-C Actual and Forecasted Weather at Vancouver up to Week 28 2025-26



*Note: Precip Threshold refers to 8mm of rain. At this level of precipitation, vessel loading may be delayed. The duration of the delay will be dependent on the ship, the duration of rainfall, and the amount of precipitation. 8mm is a general guideline and is not meant to be a definitive limit.
Source: Environment and Climate Change Canada, The Weather Network (Forecast)