

Grain Monitoring Program

Weekly Performance Update

April 21, 2026

For Grain Week 36 2025-26 CY

April 06, 2026 to April 12, 2026

Summary

	Week 36	Week 35	Var. from Last Year	
1. Stocks in Store ('000 tonnes)				
Country Elevators	↓ 4,374.7	4,441.4	1%	
% of Working Capacity	82%	83%		
Terminal Elevators	↓ 1,666.7	1,670.8	25%	
% of Working Capacity	87%	87%		
2. Country Deliveries ('000 tonnes)				
Country Deliveries	↑ 1,092.5	962.6	11%	
3. Port Performance (Cars)				
Vancouver Unloads	↑ 8,322	6,152	17%	
Prince Rupert Unloads	↓ 1,024	1,098	-32%	
Churchill Unloads	— 0	0	n/a	
Thunder Bay Unloads	↑ 2,134	1,222	-2%	
Total Weekly Unloads	↑ 11,480	8,472	6%	
4-Week Rolling Average	↑ 9,614	8,878	4%	
Var. to 4-Week Rolling Average	19%	-5%		
YTD Unloads	331,778	320,298	5%	
Weekly Out-of-Car Time	↑ 10.7%	9.8%	42.8%	
4. Terminal Shipments Year-to-Date ('000 tonnes)				
Vancouver	↑ 23,123.0	22,337.7	8%	
Prince Rupert	↑ 3,664.3	3,564.3	2%	
Churchill	— 0.0	0.0	n/a	
Thunder Bay	↑ 4,398.7	4,213.2	-1%	
Total Western Canada	↑ 31,186.0	30,115.2	6%	
5. Vessels as at Apr 19, 2026				
	Week 37	Week 36	Var. from Last Year	
Vancouver	Vessel Lineup in port	↑ 37	35	37%
	Vessels Cleared	↑ 13	12	30%
	Vessels Arrived	↓ 15	16	50%
Pr. Rupert	Vessel Lineup in port	↑ 4	3	33%
	Vessels Cleared	↓ 1	2	-50%
	Vessels Arrived	↓ 2	3	100%
Vessels Inbound Apr 20, 2026 to Apr 26, 2026 (Week 38)				
Vancouver	7			
Prince Rupert	3			

1. Stocks in Store: (Page 2)

- Country stocks decreased to 4.37 MMT in Week 36 utilizing 82% of the system's working capacity.
- Total western port terminal stocks decreased to 1.67 MMT in Week 36, utilizing 87% of the working capacity. Space at Vancouver is limited.

2. Country Deliveries: (Page 3)

- Deliveries to primary elevators were 1.09 MMT in Week 36.

3. Port Performance: (Pages 3-5)

- Total western port unloads were 19% higher than the 4-week moving average and 6% higher than Week 36 last year.
- West Coast unloads were 9,346 cars (Vancouver 8,322 and Prince Rupert 1,024), 15% higher than the 4-week moving average and 8% higher than Week 36 last year.
- Thunder Bay had 2,134 unloads, 45% higher than the 4-week moving average and 2% lower than Week 36 last year.
- The total average terminal out-of-car time (OCT) increased to 10.7% from 9.8% the previous week. The OCT for Week 36 was 6.3% at Vancouver, 40.2% at Prince Rupert, and 9.4% at Thunder Bay.

4. Shipments: (Page 5)

- Year-to-date Western Canadian shipments from port terminal elevators at Week 36 are 6% higher than the same period last year and 8% higher than the 3-year average.

5. Vessels: (Page 5)

- Vancouver vessel lineup for Week 37 2025-26 increased to 37 vessels (The current one-year average at Vancouver is 20 vessels). Of the 37, 9 were at berth, 14 were anchored at English Bay, 2 were anchored at Burrard Inlet, and 12 were anchored at Vancouver Island.
- Prince Rupert vessel lineup for Week 37 2025-26 increased to 4 vessels (The current one-year average at Prince Rupert is 3 vessels).
- Vessels cleared from Vancouver was 13 and from Prince Rupert was 1 in Week 37 2025-26.

6. Weather: (Page 6)

- The weather section has been removed from the GMP Weekly Performance Update, to be added back in the autumn.

1. Stocks in Store

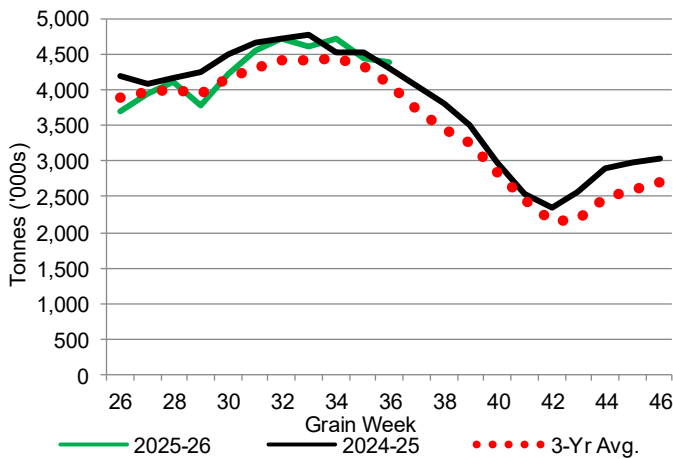
1-A1 Country Stocks ('000 tonnes) – Week 36

	MB	SK	AB	BC	Total
2025-26	941.4	2,045.1	1,370.7	17.5	4,374.7
2024-25	838.0	2,197.9	1,266.0	12.5	4,314.4
3-Yr Avg.	840.7	2,002.6	1,225.6	16.5	4,085.4
Var % - LY	12%	-7%	8%	40%	1%
Var % 3-Yr Avg.	12%	2%	12%	6%	7%
Storage Capacity	1,631.3	4,053.8	2,492.3	30.6	8,208.0
Estimated Working Capacity	1,060.3	2,635.0	1,620.0	19.9	5,335.2
25-26 % of Wkg Cap	89%	78%	85%	88%	82%

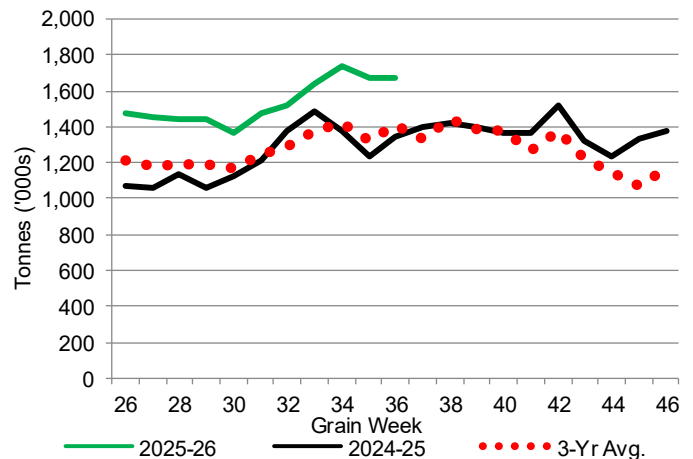
1-B1 Terminal Stocks ('000 tonnes) – Week 36

	VC	PR	West Coast	CH	TB	Total
2025-26	930.3	91.4	1,021.7	0.7	644.3	1,666.7
2024-25	713.8	118.8	832.6	0.7	505.9	1,339.2
3-Yr Avg.	768	100.3	868.3	0.7	539.0	1,408.0
Var % - LY	30%	-23%	23%	0%	27%	24%
Var % 3-Yr Avg.	21%	-9%	18%	0%	20%	18%
Storage Capacity	1,275.5	209.5	1,485.0	140.0	1,127.5	2,752.5
Estimated Working Capacity	892.9	146.7	1,039.6	98.0	789.2	1,926.8
25-26 % of Wkg Cap	104%	62%	98%	1%	82%	87%

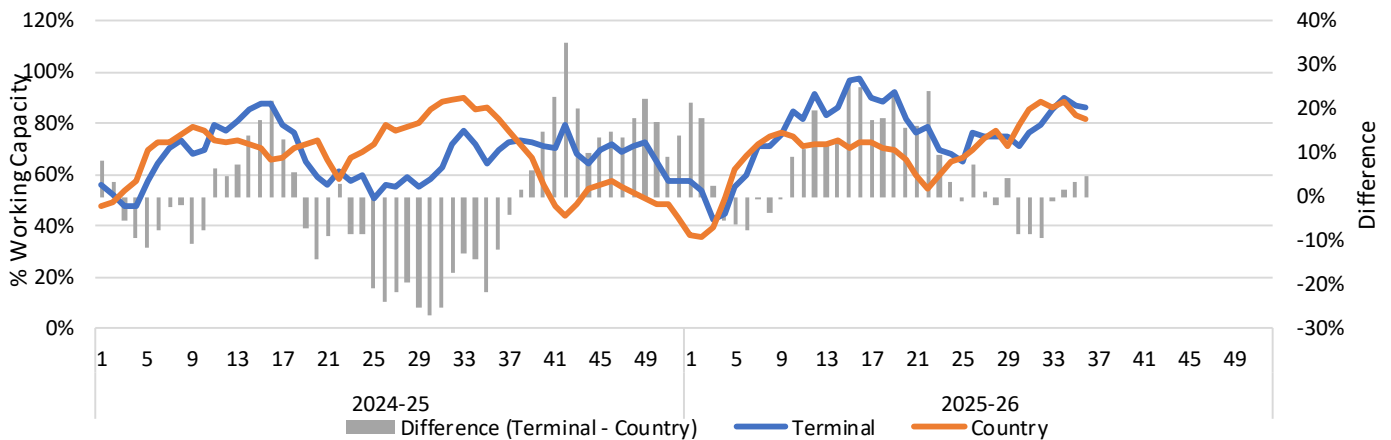
1-A2 Weekly Country Stocks in Store



1-B2 Weekly Terminal Stocks in Store



1-C Weekly Stock Balance

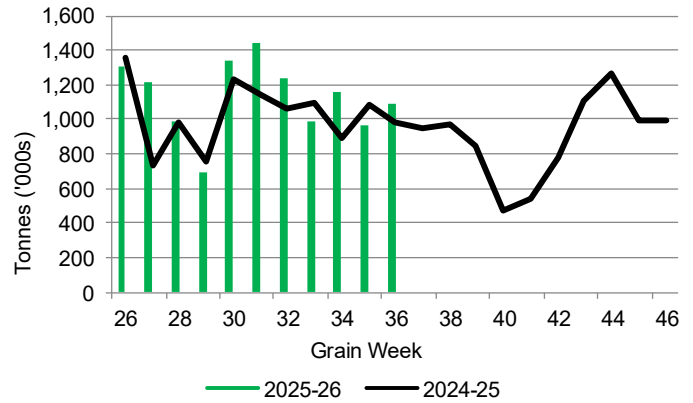


2. Country Deliveries

2-A Country Deliveries ('000 tonnes) – Week 36

	MB	SK	AB	BC	Total
2025-26	154.5	535.1	396.9	6.0	1,092.5
2024-25	188.5	485.6	307.5	6.2	987.8
4 Wk Avg	143.7	530.0	373.6	5.8	1,053.1
Var % to Last Year	-18%	10%	29%	-3%	11%
Var % To 4 Wk Avg	8%	1%	6%	3%	4%

2-B 2025-26 Weekly Country Deliveries



3. Port Performance

3-A Weekly Unloads by Port (Cars) – This Year for Week 36, 4-Week Moving Average and Variances

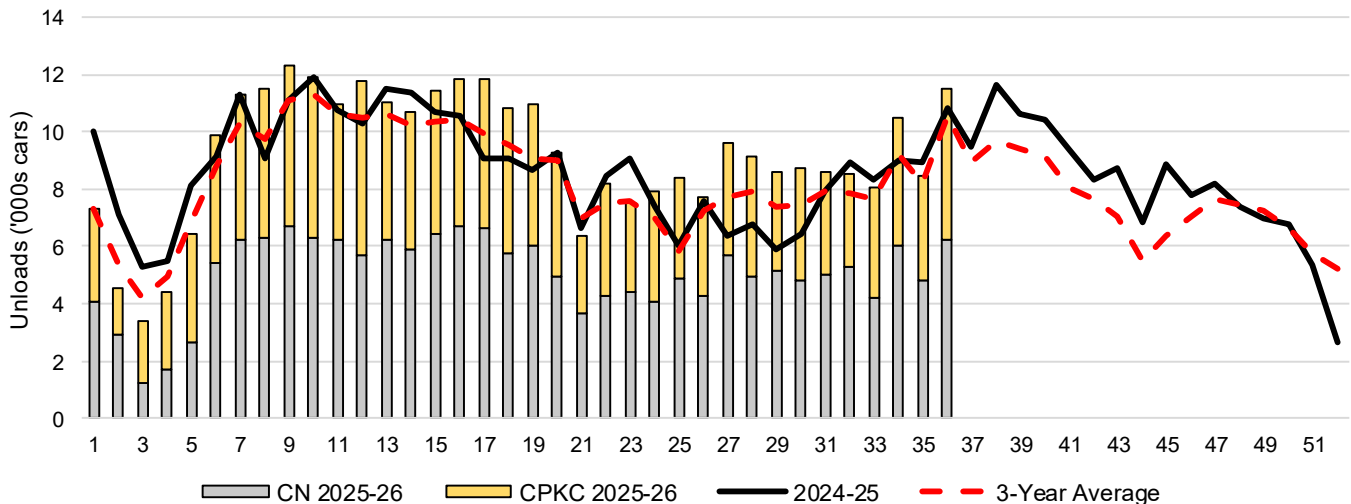
	Vancouver	Prince Rupert	West Coast	Thunder Bay	Churchill	Total
2025-26	8,322	1,024	9,346	2,134	-	11,480
2024-25	7,125	1,500	8,625	2,187	n/a	10,812
4-Wk Avg.	6,967	1,178	8,145	1,470	-	9,614
Var % to Last Year	17%	-32%	8%	-2%	n/a	6%
Var % to 4-Wk Avg.	19%	-13%	15%	45%	n/a	19%

3-B Terminal Unloads by Port – This Year-to-Date as at Week 36 and Variances

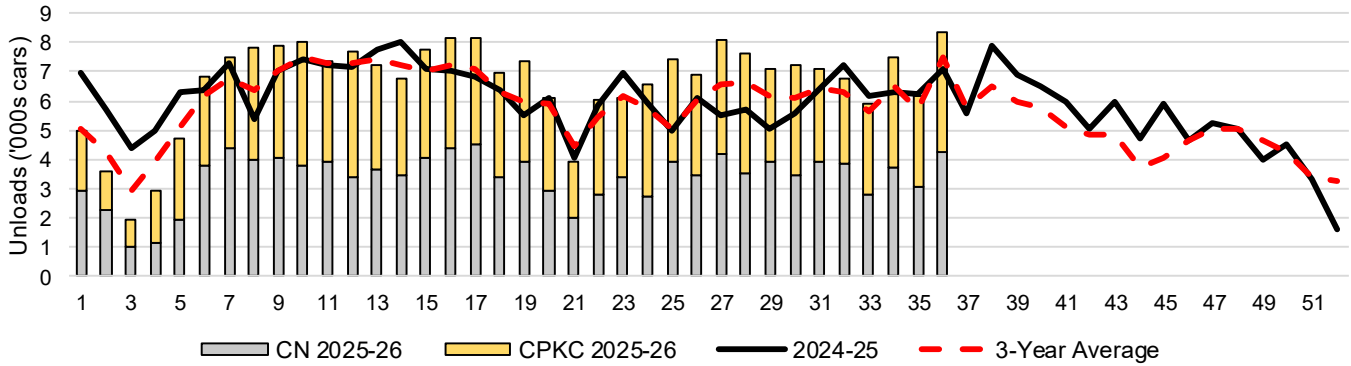
YTD Unloads (cars)	Vancouver	Prince Rupert	West Coast	Thunder Bay	Churchill	Total
2025-26	238,123	37,999	276,122	55,656	-	331,778
2024-25	225,895	36,744	262,639	51,934	-	314,573
3-Yr Avg	220,272	32,766	253,038	51,378	-	304,416
Var % to Last Year	5%	3%	5%	7%	n/a	5%
Var % to 3-Yr Avg	8%	16%	9%	8%	n/a	9%

YTD Unloads ('000 tonnes)	Vancouver	Prince Rupert	West Coast	Thunder Bay	Churchill	Total
2025-26	22,942.8	3,685.5	26,628.3	5,396.0	-	32,024.3
2024-25	21,553.2	3,550.1	25,103.3	5,039.7	-	30,143.0
3-Yr Avg.	21,149.6	3,173.9	24,323.5	4,987.4	-	29,310.9
Var % to Last Year	6%	4%	6%	7%	n/a	6%
Var % to 3-Yr Avg.	8%	16%	9%	8%	n/a	9%

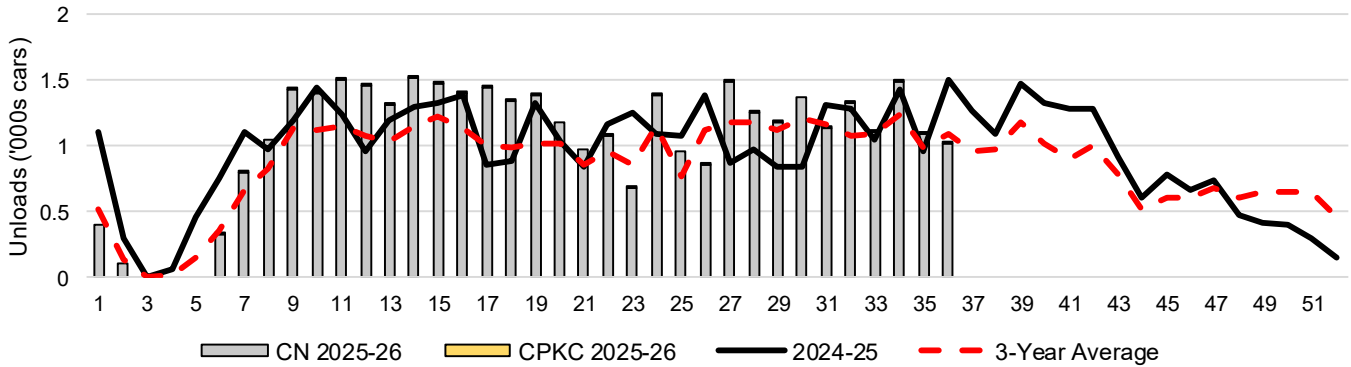
3-C Western Port Terminal Unloads (cars), Total by Carrier, This Year vs. Last Year and the 3-Year Average



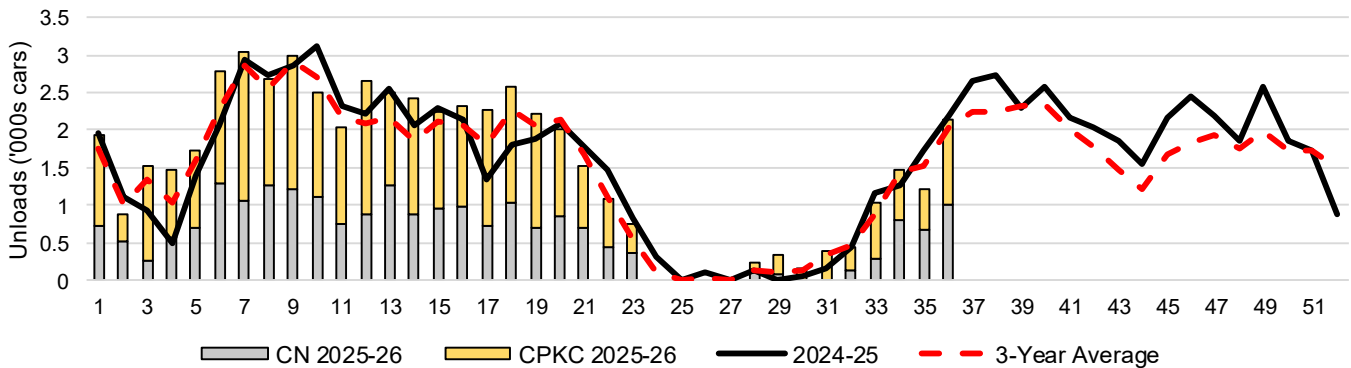
3-D Vancouver Terminal Unloads (cars), Total by Carrier, This Year vs. Last Year and the 3-Year Average



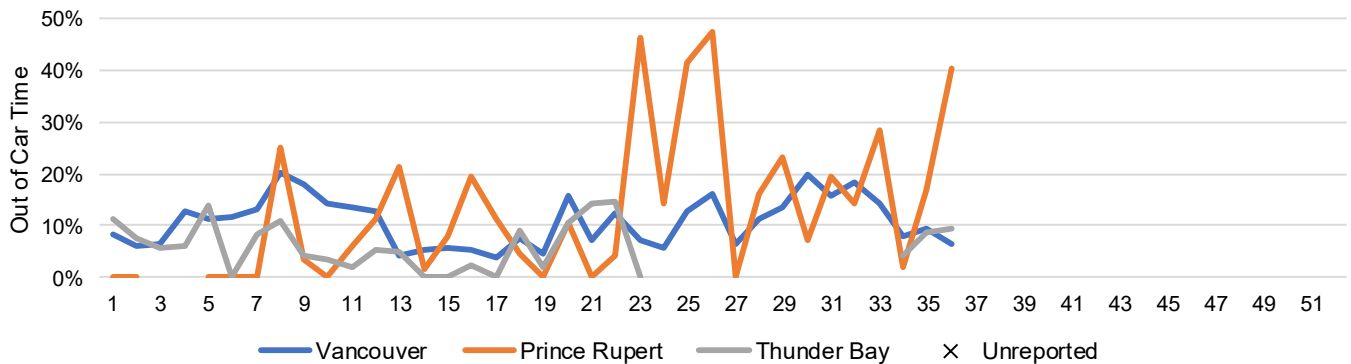
3-E Prince Rupert Terminal Unloads (cars), Total by Carrier, This Year vs. Last Year and the 3-Year Average



3-F Thunder Bay Terminal Unloads (cars), Total by Carrier, This Year vs. Last Year and the 3-Year Average



3-G Weekly Out-of-Car Time (% of hours out-of-cars / total hours working)



Out-of-car time is measured weekly and uses data from terminal elevators on the total number of hours the facilities are open & staffed (including overtime hours) and the corresponding number of hours that terminals have no railcars available to unload. The measure is expressed as a percentage (hours without cars to the total number of hours working).

3-H Monthly Unloads (cars) – This Year vs. Last Year and the 3-Year Average to Week 34 2025-26

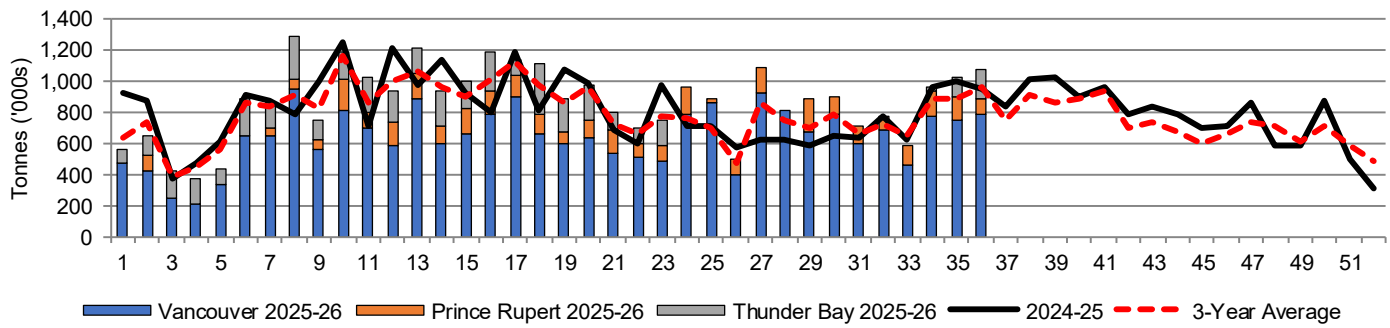
Months	Aug	Sep	Oct	Nov	Dec	Jan	Feb	Mar	Apr	May	Jun	Jul
Weeks	1-4	5-8	9-13	14-17	18-22	23-26	27-30	31-34	35-39	40-43	44-47	48-52
2025-26	19,698	39,195	57,998	45,883	45,719	31,587	36,097	35,649	-	-	-	-
2024-25	27,951	37,723	55,616	41,691	42,065	30,063	25,510	34,219	51,573	36,877	31,705	29,163
3-Yr Avg.	21,886	35,667	54,166	41,012	42,119	27,631	30,543	32,596	46,068	31,924	26,591	32,929
Var % to Last Year	-30%	4%	4%	10%	9%	5%	42%	4%				
Var % to 3-Yr Avg.	-10%	10%	7%	12%	9%	14%	18%	9%				

4. Shipments

4-A Shipments from Port Terminals ('000 tonnes) – This Year-to-Date as at Week 36 and Variance to Last Year-to-Date

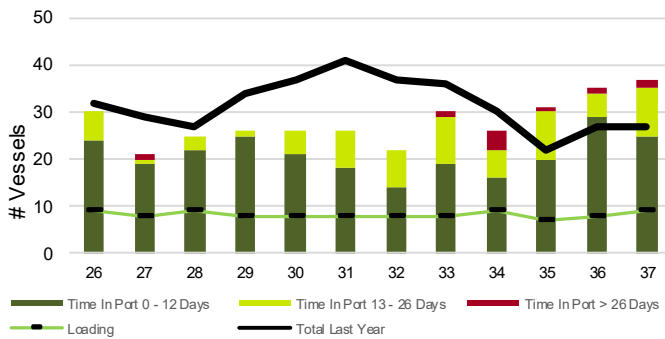
	Vancouver	Prince Rupert	West Coast	Thunder Bay	Churchill	Total	
2025-26	23,123.0	3,664.3	26,787.3	4,398.7	-	31,186.0	
2024-25	21,467.6	3,581.9	25,049.5	4,439.7	-	29,489.2	
3-Yr Avg.	21,494.8	3,181.8	24,676.6	4,298.9	-	28,975.5	
Var % to Last Year		8%	2%	7%	-1%	n/a	6%
Var % to 3-Yr Avg.		8%	15%	9%	2%	n/a	8%

4-B Weekly Shipments ('000 tonnes) from Port Terminals – This Year vs Last Year and the 3-Year Average

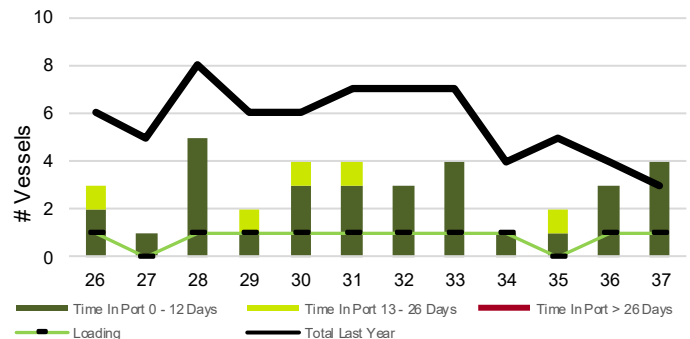


5. Vessels

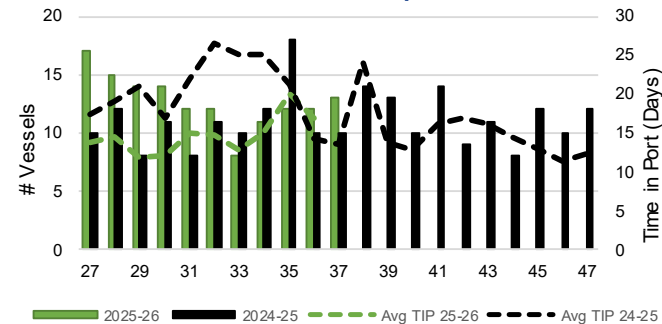
5-A Vessel Lineup at Vancouver as of Week 37 2025-26



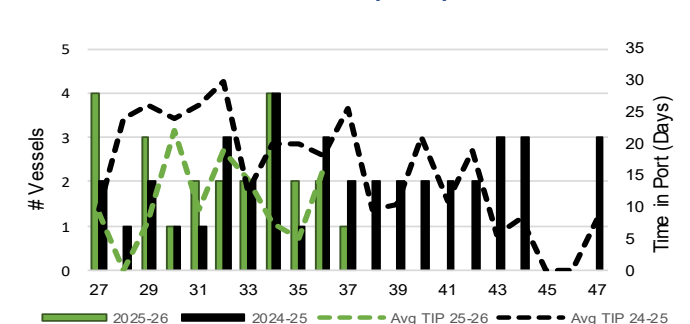
5-C Vessel Lineup at Prince Rupert as of Week 37 2025-26



5-B Vessels Cleared at Vancouver up to Week 37 2025-26



5-D Vessels Cleared at Prince Rupert up to Week 37 2025-26



Note: The 'Time in Port' measure for 5-A and 5-C is calculated as how long each vessel in the lineup has been in port as at Sunday 23:59 of that grain week. The 'Avg Time in Port (TIP)' measure for 5-B and 5-D is the average number of days that all vessels which cleared that week were in port. These measures use vessel data provided by the BC Chamber of Shipping and Pacific Pilotage Authority.