

Grain Monitoring Program

Weekly Performance Update

April 28, 2026

For Grain Week 37 2025-26 CY

April 13, 2026 to April 19, 2026

Summary

	Week 37	Week 36	Var. from Last Year	
1. Stocks in Store ('000 tonnes)				
Country Elevators	↓ 4,079.9	4,374.7	1%	
% of Working Capacity	76%	82%		
Terminal Elevators	↓ 1,579.1	1,666.7	13%	
% of Working Capacity	82%	87%		
2. Country Deliveries ('000 tonnes)				
Country Deliveries	↓ 1,025.5	1,092.5	8%	
3. Port Performance (Cars)				
Vancouver Unloads	↓ 7,584	8,322	36%	
Prince Rupert Unloads	↑ 1,489	1,024	17%	
Churchill Unloads	— 0	0	n/a	
Thunder Bay Unloads	↑ 2,157	2,134	-18%	
Total Weekly Unloads	↓ 11,230	11,480	18%	
4-Week Rolling Average	↑ 10,413	9,614	9%	
Var. to 4-Week Rolling Average	8%	19%		
YTD Unloads	343,009	331,779	6%	
Weekly Out-of-Car Time	↓ 8.9%	10.7%	8.6%	
4. Terminal Shipments Year-to-Date ('000 tonnes)				
Vancouver	↑ 23,838.5	23,140.2	9%	
Prince Rupert	↑ 3,761.6	3,664.3	2%	
Churchill	— 0.0	0.0	n/a	
Thunder Bay	↑ 4,641.6	4,398.7	-1%	
Total Western Canada	↑ 32,241.7	31,203.2	6%	
5. Vessels as at Apr 26, 2026				
	Week 38	Week 37	Var. from Last Year	
Vancouver	Vessel Lineup in port	↓ 23	38	-12%
	Vessels Cleared	↑ 19	13	36%
	Vessels Arrived	↓ 4	16	-69%
Pr. Rupert	Vessel Lineup in port	↓ 1	4	-67%
	Vessels Cleared	↑ 5	1	150%
	Vessels Arrived	— 2	2	0%
Vessels Inbound Apr 27, 2026 to May 03, 2026 (Week 39)				
Vancouver	12			
Prince Rupert	2			

1. Stocks in Store: (Page 2)

- Country stocks decreased to 4.08 MMT in Week 37 utilizing 76% of the system's working capacity.
- Total western port terminal stocks decreased to 1.58 MMT in Week 37, utilizing 82% of the working capacity. Space at Vancouver and Prince Rupert is limited.

2. Country Deliveries: (Page 3)

- Deliveries to primary elevators were 1.03 MMT in Week 37.

3. Port Performance: (Pages 3-5)

- Total western port unloads were 8% higher than the 4-week moving average and 18% higher than Week 37 last year.
- West Coast unloads were 9,073 cars (Vancouver 7,584 and Prince Rupert 1,489), 5% higher than the 4-week moving average and 32% higher than Week 37 last year.
- Thunder Bay had 2,157 unloads, 23% higher than the 4-week moving average and 18% lower than Week 37 last year.
- The total average terminal out-of-car time (OCT) decreased to 8.9% from 10.7% the previous week. The OCT for Week 37 was 10.7% at Vancouver, 10.7% at Prince Rupert, and 3.7% at Thunder Bay.

4. Shipments: (Page 5)

- Year-to-date Western Canadian shipments from port terminal elevators at Week 37 are 6% higher than the same period last year and 8% higher than the 3-year average.

5. Vessels: (Page 5)

- Vancouver vessel lineup for Week 38 2025-26 decreased to 23 vessels (The current one-year average at Vancouver is 20 vessels). Of the 23, 7 were at berth, 9 were anchored at English Bay, 1 was anchored at Burrard Inlet, and 6 were anchored at Vancouver Island.
- Prince Rupert vessel lineup for Week 38 2025-26 decreased to 1 vessel (The current one-year average at Prince Rupert is 2 vessels).
- Vessels cleared from Vancouver was 19 and from Prince Rupert was 5 in Week 38 2025-26.

6. Weather: (Page 6)

- The weather section has been removed from the GMP Weekly Performance Update, to be added back in the autumn.

1. Stocks in Store

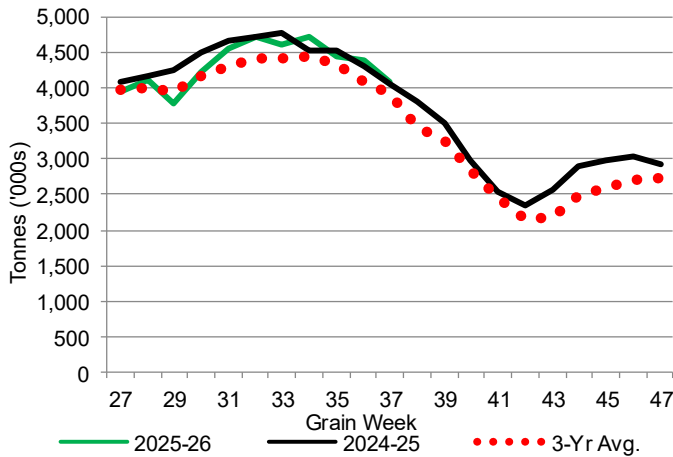
1-A1 Country Stocks ('000 tonnes) – Week 37

	MB	SK	AB	BC	Total
2025-26	888.6	1,827.2	1,350.2	13.9	4,079.9
2024-25	838.7	2,033.6	1,171.8	14.8	4,058.9
3-Yr Avg.	828.1	1,881.9	1,195.1	16.0	3,921.1
Var % - LY	6%	-10%	15%	-6%	1%
Var % 3-Yr Avg.	7%	-3%	13%	-13%	4%
Storage Capacity	1,631.3	4,053.8	2,492.3	30.6	8,208.0
Estimated Working Capacity	1,060.3	2,635.0	1,620.0	19.9	5,335.2
25-26 % of Wkg Cap	84%	69%	83%	70%	76%

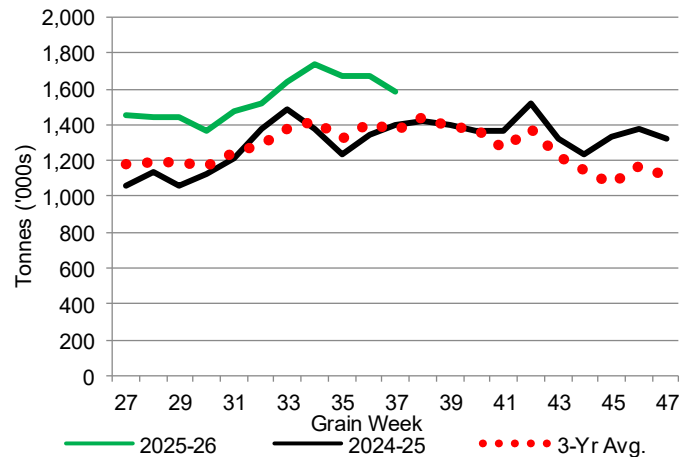
1-B1 Terminal Stocks ('000 tonnes) – Week 37

	VC	PR	West Coast	CH	TB	Total
2025-26	859.8	134.3	994.1	0.7	584.3	1,579.1
2024-25	742.1	135.4	877.5	0.7	521.6	1,399.8
3-Yr Avg.	731.5	122.6	854.0	0.7	513.8	1,368.5
Var % - LY	16%	-1%	13%	0%	12%	13%
Var % 3-Yr Avg.	18%	10%	16%	0%	14%	15%
Storage Capacity	1,275.5	209.5	1,485.0	140.0	1,127.5	2,752.5
Estimated Working Capacity	892.9	146.7	1,039.6	98.0	789.2	1,926.8
25-26 % of Wkg Cap	96%	92%	96%	1%	74%	82%

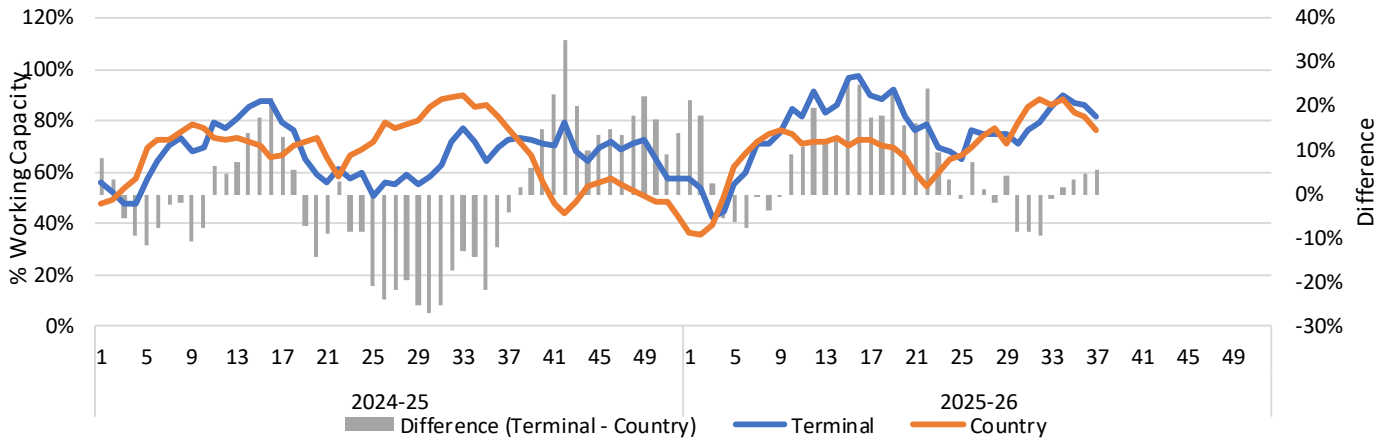
1-A2 Weekly Country Stocks in Store



1-B2 Weekly Terminal Stocks in Store



1-C Weekly Stock Balance

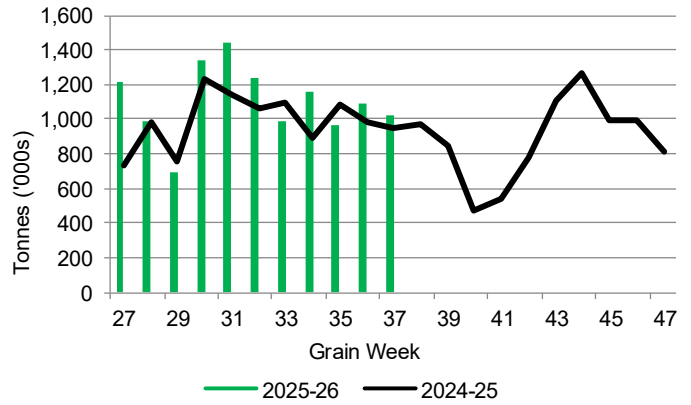


2. Country Deliveries

2-A Country Deliveries ('000 tonnes) – Week 37

	MB	SK	AB	BC	Total
2025-26	174.3	461.0	386.3	3.9	1,025.5
2024-25	159.5	474.1	314.3	4.8	952.7
4 Wk Avg	156.8	517.9	381.0	5.5	1,061.2
Var % to Last Year	9%	-3%	23%	-19%	8%
Var % To 4 Wk Avg	11%	-11%	1%	-29%	-3%

2-B 2025-26 Weekly Country Deliveries



3. Port Performance

3-A Weekly Unloads by Port (Cars) – This Year for Week 37, 4-Week Moving Average and Variances

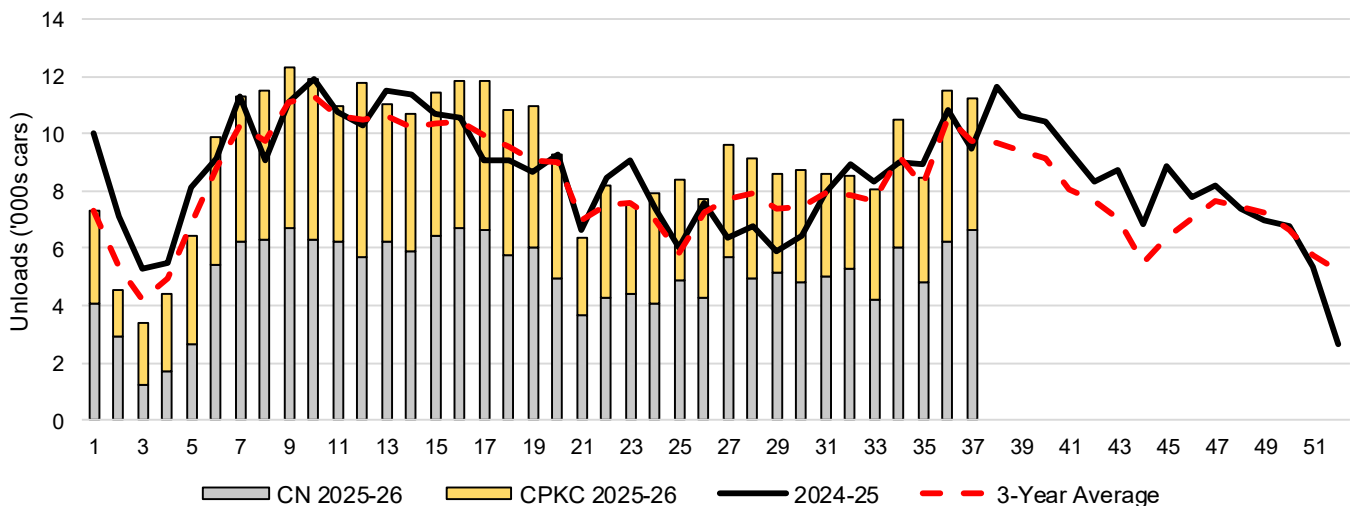
	Vancouver	Prince Rupert	West Coast	Thunder Bay	Churchill	Total
2025-26	7,584	1,489	9,073	2,157	-	11,230
2024-25	5,586	1,271	6,857	2,646	n/a	9,503
4-Wk Avg.	7,392	1,274	8,666	1,747	-	10,413
Var % to Last Year	36%	17%	32%	-18%	n/a	18%
Var % to 4-Wk Avg.	3%	17%	5%	23%	n/a	8%

3-B Terminal Unloads by Port – This Year-to-Date as at Week 37 and Variances

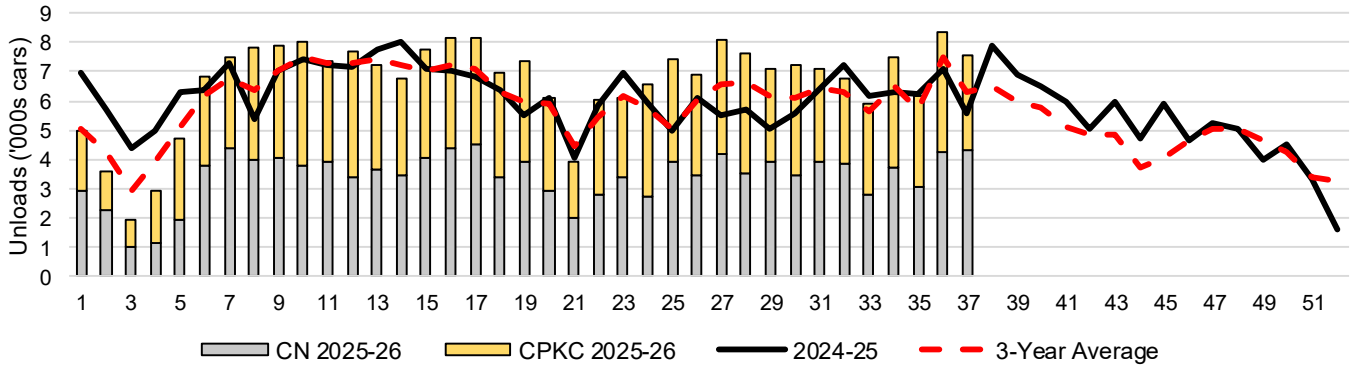
YTD Unloads (cars)	Vancouver	Prince Rupert	West Coast	Thunder Bay	Churchill	Total
2025-26	245,707	39,488	285,195	57,813	-	343,008
2024-25	231,481	38,015	269,496	54,580	-	324,076
3-Yr Avg	226,570	33,885	260,455	53,681	-	314,136
Var % to Last Year	6%	4%	6%	6%	n/a	6%
Var % to 3-Yr Avg	8%	17%	9%	8%	n/a	9%

YTD Unloads ('000 tonnes)	Vancouver	Prince Rupert	West Coast	Thunder Bay	Churchill	Total
2025-26	23,668.3	3,827.4	27,495.7	5,602.5	-	33,098.2
2024-25	22,087.0	3,676.7	25,763.7	5,298.4	-	31,062.1
3-Yr Avg.	21,753.1	3,281.8	25,034.9	5,210.5	-	30,245.5
Var % to Last Year	7%	4%	7%	6%	n/a	7%
Var % to 3-Yr Avg.	9%	17%	10%	8%	n/a	9%

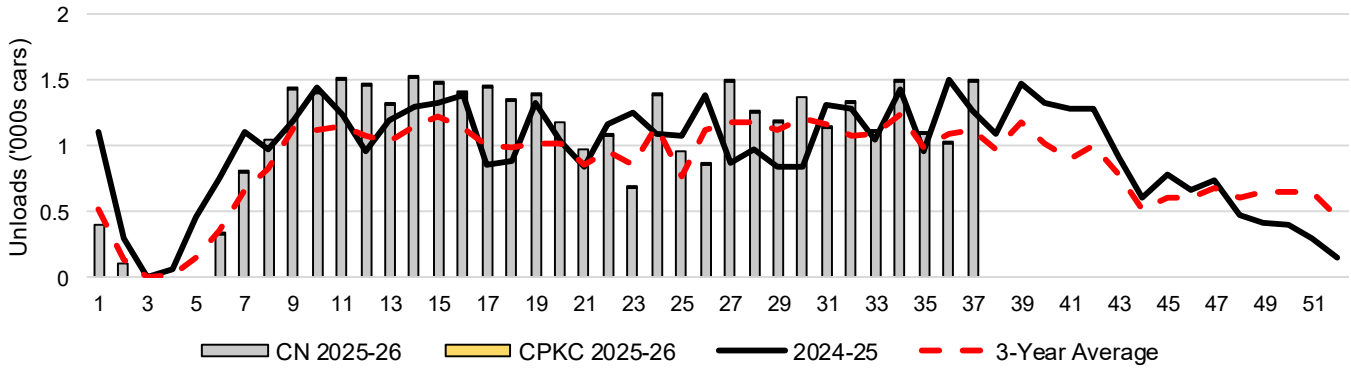
3-C Western Port Terminal Unloads (cars), Total by Carrier, This Year vs. Last Year and the 3-Year Average



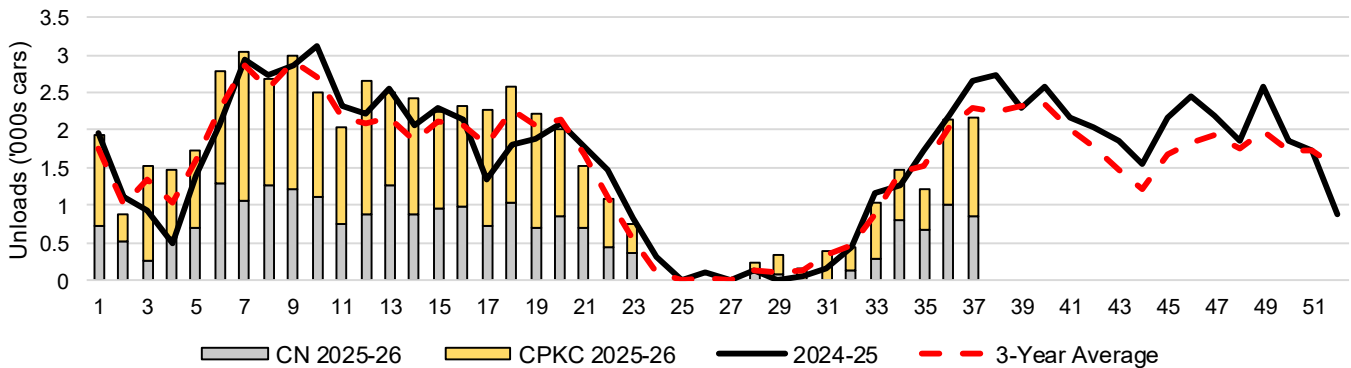
3-D Vancouver Terminal Unloads (cars), Total by Carrier, This Year vs. Last Year and the 3-Year Average



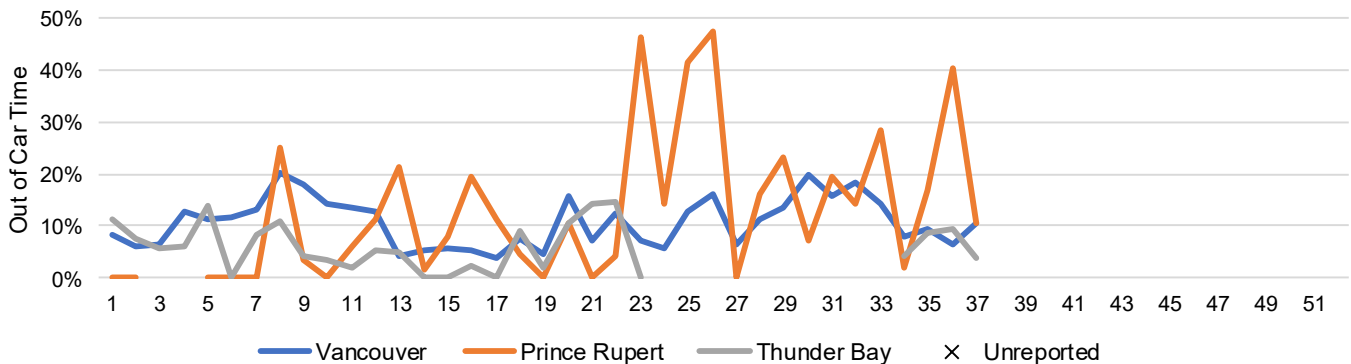
3-E Prince Rupert Terminal Unloads (cars), Total by Carrier, This Year vs. Last Year and the 3-Year Average



3-F Thunder Bay Terminal Unloads (cars), Total by Carrier, This Year vs. Last Year and the 3-Year Average



3-G Weekly Out-of-Car Time (% of hours out-of-cars / total hours working)



Out-of-car time is measured weekly and uses data from terminal elevators on the total number of hours the facilities are open & staffed (including overtime hours) and the corresponding number of hours that terminals have no railcars available to unload. The measure is expressed as a percentage (hours without cars to the total number of hours working).

3-H Monthly Unloads (cars) – This Year vs. Last Year and the 3-Year Average to Week 34 2025-26

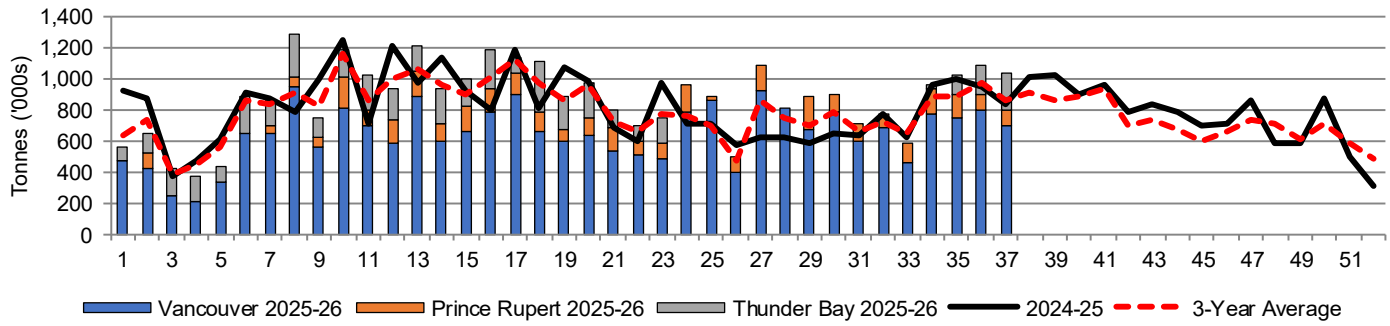
Months	Aug	Sep	Oct	Nov	Dec	Jan	Feb	Mar	Apr	May	Jun	Jul
Weeks	1-4	5-8	9-13	14-17	18-22	23-26	27-30	31-34	35-39	40-43	44-47	48-52
2025-26	19,698	39,195	57,998	45,883	45,719	31,587	36,097	35,649	-	-	-	-
2024-25	27,951	37,723	55,616	41,691	42,065	30,063	25,510	34,219	51,573	36,877	31,705	29,163
3-Yr Avg.	21,886	35,667	54,166	41,012	42,119	27,631	30,543	32,596	46,068	31,924	26,591	32,929
Var % to Last Year	-30%	4%	4%	10%	9%	5%	42%	4%				
Var % to 3-Yr Avg.	-10%	10%	7%	12%	9%	14%	18%	9%				

4. Shipments

4-A Shipments from Port Terminals ('000 tonnes) – This Year-to-Date as at Week 37 and Variance to Last Year-to-Date

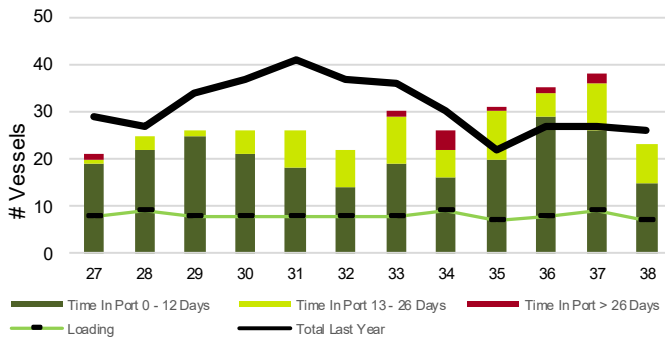
	Vancouver	Prince Rupert	West Coast	Thunder Bay	Churchill	Total	
2025-26	23,838.5	3,761.6	27,600.1	4,641.6	-	32,241.7	
2024-25	21,956.4	3,691.9	25,648.3	4,671.9	-	30,320.2	
3-Yr Avg.	22,058.2	3,267.0	25,325.2	4,511.8	-	29,837.0	
Var % to Last Year		9%	2%	8%	-1%	n/a	6%
Var % to 3-Yr Avg.		8%	15%	9%	3%	n/a	8%

4-B Weekly Shipments ('000 tonnes) from Port Terminals – This Year vs Last Year and the 3-Year Average

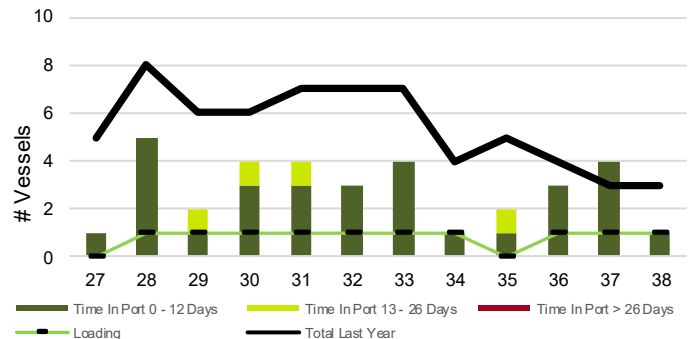


5. Vessels

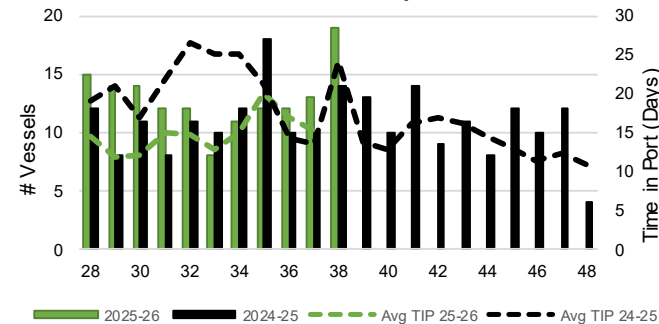
5-A Vessel Lineup at Vancouver as of Week 38 2025-26



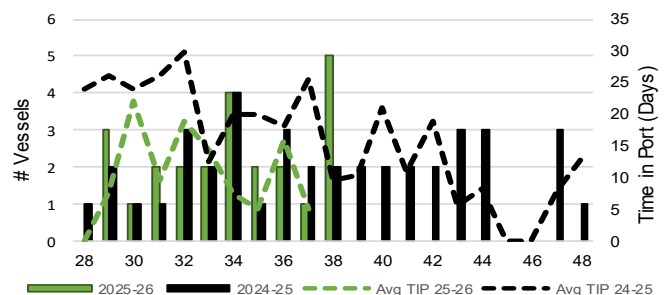
5-C Vessel Lineup at Prince Rupert as of Week 38 2025-26



5-B Vessels Cleared at Vancouver up to Week 38 2025-26



5-D Vessels Cleared at Prince Rupert up to Week 38 2025-26



Note: The 'Time in Port' measure for 5-A and 5-C is calculated as how long each vessel in the lineup has been in port as at Sunday 23:59 of that grain week. The 'Avg Time in Port (TIP)' measure for 5-B and 5-D is the average number of days that all vessels which cleared that week were in port. These measures use vessel data provided by the BC Chamber of Shipping and Pacific Pilotage Authority.