

# Grain Monitoring Program

## Weekly Performance Update

May 05, 2026

For Grain Week 38 2025-26 CY

April 20, 2026 to April 26, 2026

### Summary

	Week 38	Week 37	Var. from Last Year	
<b>1. Stocks in Store ('000 tonnes)</b>				
Country Elevators	↓ 3,909.2	4,079.9	3%	
% of Working Capacity	73%	76%		
Terminal Elevators	↓ 1,372.3	1,579.1	-3%	
% of Working Capacity	71%	82%		
<b>2. Country Deliveries ('000 tonnes)</b>				
Country Deliveries	↑ 1,027.7	1,025.5	6%	
<b>3. Port Performance (Cars)</b>				
Vancouver Unloads	↓ 7,560	7,583	-4%	
Prince Rupert Unloads	↑ 1,671	1,489	54%	
Churchill Unloads	— 0	0	n/a	
Thunder Bay Unloads	↓ 1,951	2,157	-29%	
Total Weekly Unloads	↓ 11,182	11,229	-4%	
4-Week Rolling Average	↑ 10,591	10,413	4%	
Var. to 4-Week Rolling Average	6%	8%		
YTD Unloads	354,191	343,009	5%	
Weekly Out-of-Car Time	↑ 13.0%	8.9%	40.5%	
<b>4. Terminal Shipments Year-to-Date ('000 tonnes)</b>				
Vancouver	↑ 24,682.6	23,838.5	9%	
Prince Rupert	↑ 3,978.4	3,761.6	4%	
Churchill	— 0.0	0.0	n/a	
Thunder Bay	↑ 4,859.3	4,641.6	0%	
Total Western Canada	↑ 33,520.3	32,241.7	7%	
<b>5. Vessels as at May 3, 2026</b>				
	<b>Week 39</b>	<b>Week 38</b>	<b>Var. from Last Year</b>	
Vancouver	Vessel Lineup in port	↓ 20	23	-20%
	Vessels Cleared	↓ 15	19	15%
	Vessels Arrived	↑ 12	4	0%
Pr. Rupert	Vessel Lineup in port	↑ 2	1	-50%
	Vessels Cleared	↓ 1	5	-50%
	Vessels Arrived	— 2	2	-33%
<b>Vessels Inbound May 04, 2026 to May 10, 2026 (Week 40)</b>				
Vancouver	14			
Prince Rupert	2			

#### 1. Stocks in Store: (Page 2)

- Country stocks decreased to 3.91 MMT in Week 38 utilizing 73% of the system's working capacity.
- Total western port terminal stocks decreased to 1.37 MMT in Week 38, utilizing 71% of the working capacity.

#### 2. Country Deliveries: (Page 3)

- Deliveries to primary elevators were 1.03 MMT in Week 38.

#### 3. Port Performance: (Pages 3-5)

- Total western port unloads were 6% higher than the 4-week moving average and 4% lower than Week 38 last year.
- West Coast unloads were 9,231 cars (Vancouver 7,560 and Prince Rupert 1,671), 6% higher than the 4-week moving average and 3% higher than Week 38 last year.
- Thunder Bay had 1,951 unloads, 5% higher than the 4-week moving average and 29% lower than Week 38 last year.
- The total average terminal out-of-car time (OCT) increased to 13.0% from 8.9% the previous week. The OCT for Week 38 was 18.7% at Vancouver, 0.0% at Prince Rupert, and 3.5% at Thunder Bay.

#### 4. Shipments: (Page 5)

- Year-to-date Western Canadian shipments from port terminal elevators at Week 38 are 7% higher than the same period last year and 8% higher than the 3-year average.

#### 5. Vessels: (Page 5)

- Vancouver vessel lineup for Week 39 2025-26 decreased to 20 vessels (The current one-year average at Vancouver is 20 vessels). Of the 20, 9 were at berth, 6 were anchored at English Bay, and 5 were anchored at Vancouver Island.
- Prince Rupert vessel lineup for Week 39 2025-26 increased to 2 vessels (The current one-year average at Prince Rupert is 2 vessels).
- Vessels cleared from Vancouver was 15 and from Prince Rupert was 1 in Week 39 2025-26.

# 1. Stocks in Store

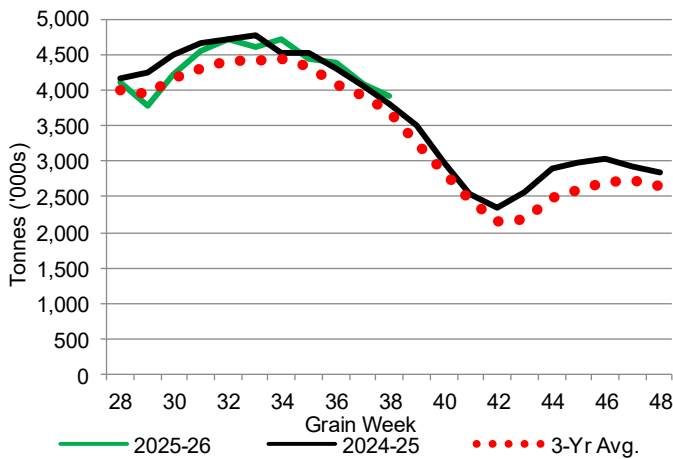
1-A1 Country Stocks ('000 tonnes) – Week 38

	MB	SK	AB	BC	Total
2025-26	835.6	1,780.6	1,280.8	12.2	3,909.2
2024-25	764.9	1,914.9	1,105.7	17.3	3,802.8
3-Yr Avg.	763.3	1,787.4	1,133.7	15.2	3,699.6
Var % - LY	9%	-7%	16%	-29%	3%
Var % 3-Yr Avg.	9%	0%	13%	-20%	6%
Storage Capacity	1,618.3	4,073.2	2,493.8	30.6	8,215.9
Estimated Working Capacity	1,051.9	2,647.6	1,621.0	19.9	5,340.4
25-26 % of Wkg Cap	79%	67%	79%	61%	73%

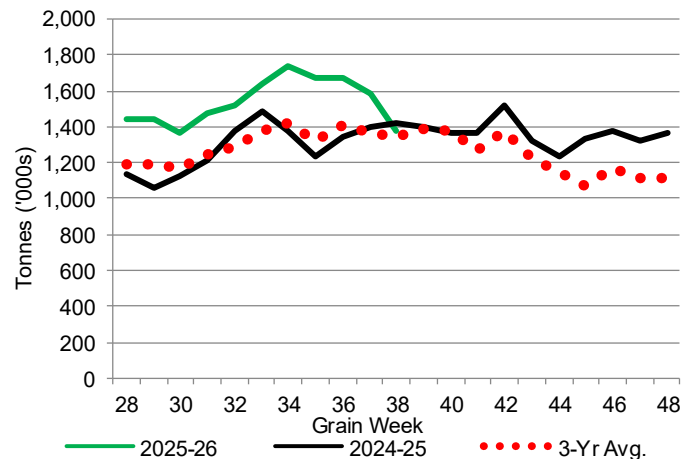
1-B1 Terminal Stocks ('000 tonnes) – Week 38

	VC	PR	West Coast	CH	TB	Total
2025-26	750.6	100.8	851.4	0.7	520.2	1,372.3
2024-25	735.4	135.4	870.8	0.7	543.5	1,415.0
3-Yr Avg.	719.4	111.4	830.8	0.7	509.1	1,340.6
Var % - LY	2%	-26%	-2%	0%	-4%	-3%
Var % 3-Yr Avg.	4%	-10%	2%	0%	2%	2%
Storage Capacity	1,275.5	209.5	1,485.0	140.0	1,127.5	2,752.5
Estimated Working Capacity	892.9	146.7	1,039.6	98.0	789.2	1,926.8
25-26 % of Wkg Cap	84%	69%	82%	1%	66%	71%

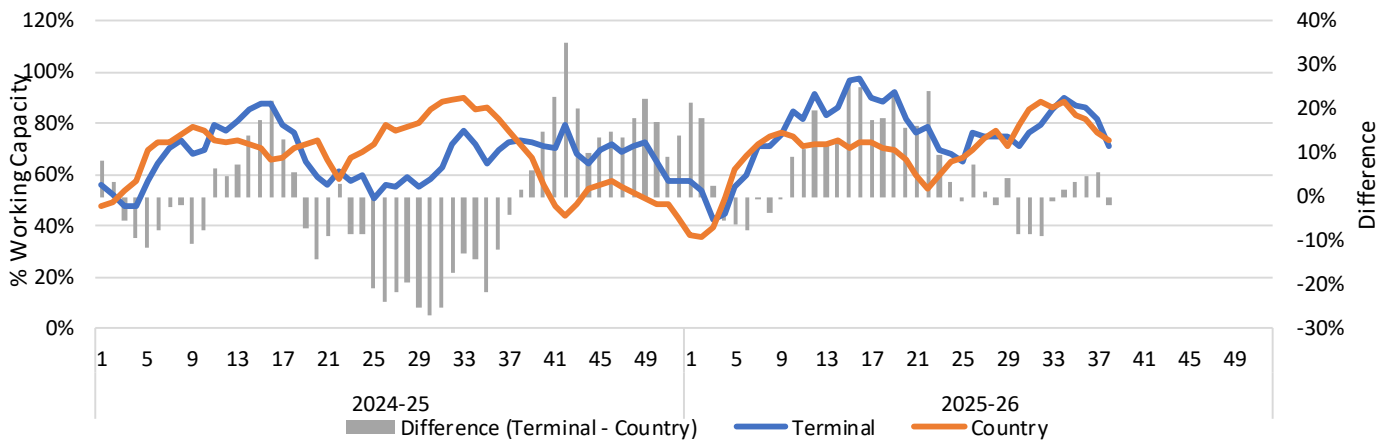
1-A2 Weekly Country Stocks in Store



1-B2 Weekly Terminal Stocks in Store



1-C Weekly Stock Balance

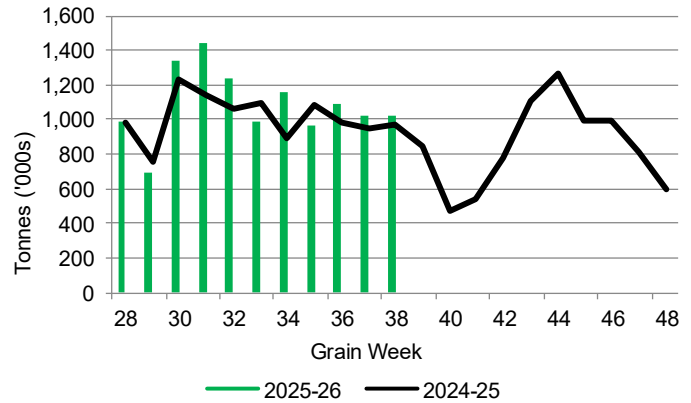


## 2. Country Deliveries

2-A Country Deliveries ('000 tonnes) – Week 38

	MB	SK	AB	BC	Total
2025-26	212.4	427.0	383.8	4.5	1,027.7
2024-25	168.8	463.2	330.4	5.8	968.2
4 Wk Avg	165.4	474.5	382.3	5.0	1,027.1
Var % to Last Year	26%	-8%	16%	-22%	6%
Var % To 4 Wk Avg	28%	-10%	0%	-10%	0%

2-B 2025-26 Weekly Country Deliveries



## 3. Port Performance

3-A Weekly Unloads by Port (Cars) – This Year for Week 38, 4-Week Moving Average and Variances

	Vancouver	Prince Rupert	West Coast	Thunder Bay	Churchill	Total
2025-26	7,560	1,671	9,231	1,951	-	11,182
2024-25	7,854	1,084	8,938	2,739	n/a	11,677
4-Wk Avg.	7,404	1,321	8,725	1,866	-	10,591
Var % to Last Year	-4%	54%	3%	-29%	n/a	-4%
Var % to 4-Wk Avg.	2%	27%	6%	5%	n/a	6%

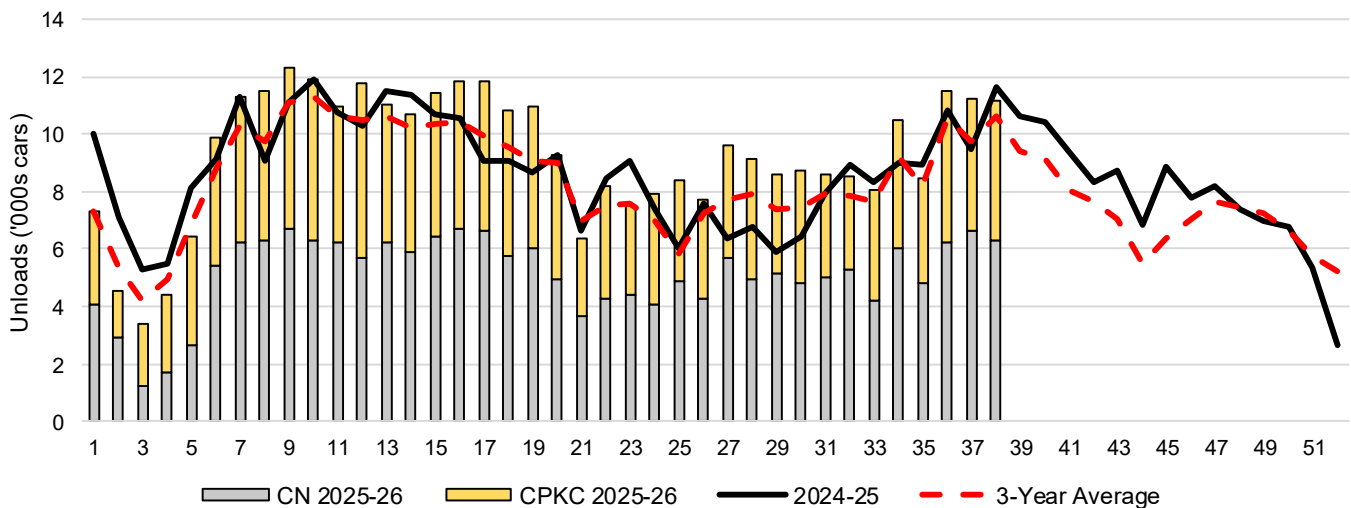
3-B Terminal Unloads by Port – This Year-to-Date as at Week 38 and Variances

YTD Unloads (cars)	Vancouver	Prince Rupert	West Coast	Thunder Bay	Churchill	Total
2025-26	253,267	41,160	294,427	59,764	-	354,191
2024-25	239,335	39,099	278,434	57,319	-	335,753
3-Yr Avg	233,717	35,040	268,757	56,012	-	324,769
Var % to Last Year	6%	5%	6%	4%	n/a	5%
Var % to 3-Yr Avg	8%	17%	10%	7%	n/a	9%

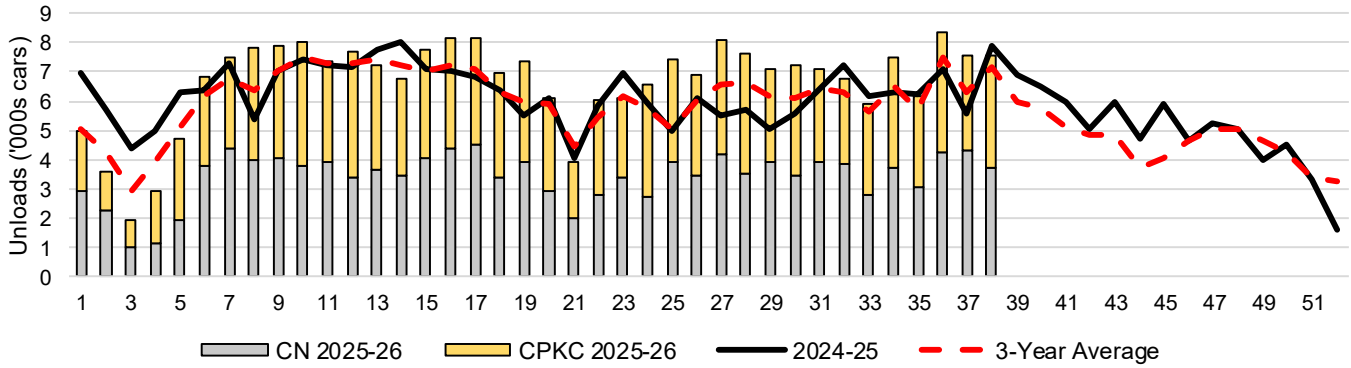
  

YTD Unloads ('000 tonnes)	Vancouver	Prince Rupert	West Coast	Thunder Bay	Churchill	Total
2025-26	24,401.6	3,992.7	28,394.3	5,792.3	-	34,186.6
2024-25	22,850.6	3,778.6	26,629.2	5,564.7	-	32,193.9
3-Yr Avg.	22,445.2	3,393.2	25,838.4	5,437.5	-	31,275.8
Var % to Last Year	7%	6%	7%	4%	n/a	6%
Var % to 3-Yr Avg.	9%	18%	10%	7%	n/a	9%

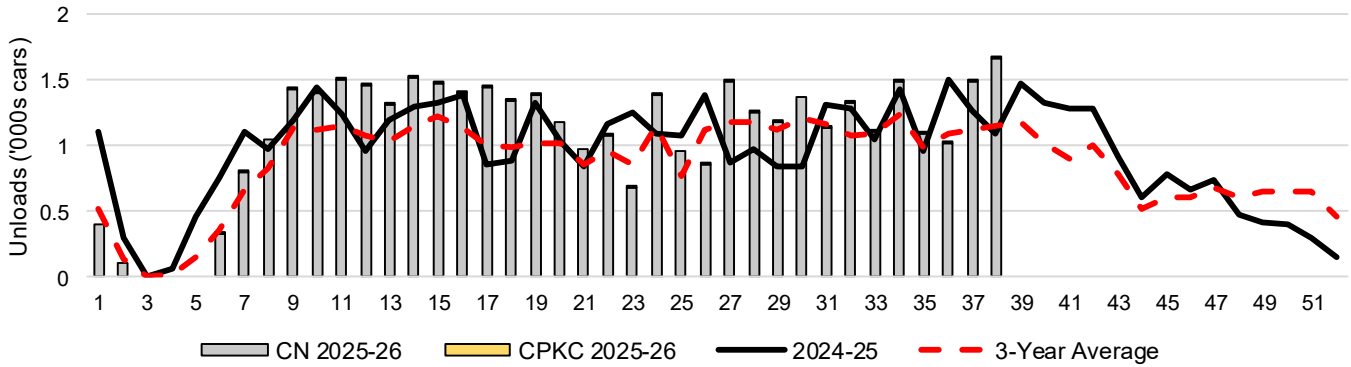
3-C Western Port Terminal Unloads (cars), Total by Carrier, This Year vs. Last Year and the 3-Year Average



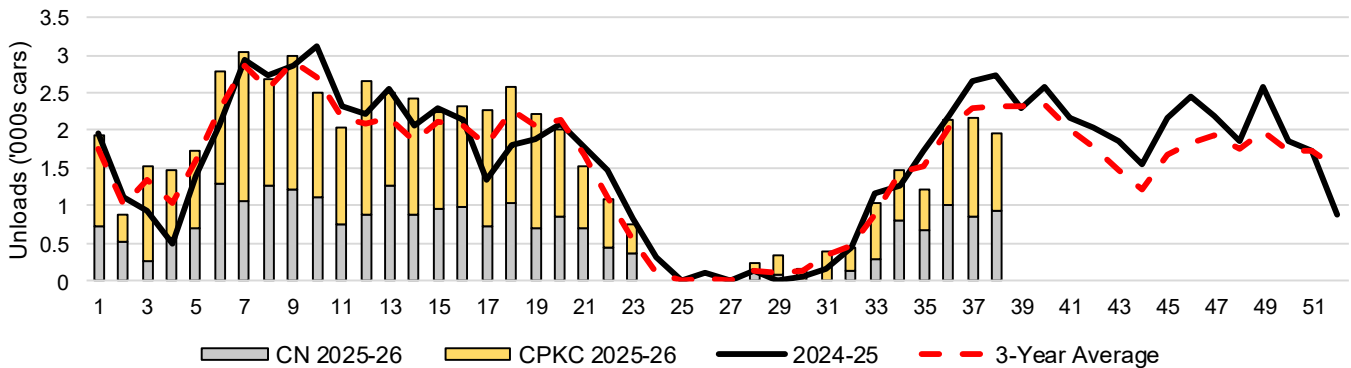
### 3-D Vancouver Terminal Unloads (cars), Total by Carrier, This Year vs. Last Year and the 3-Year Average



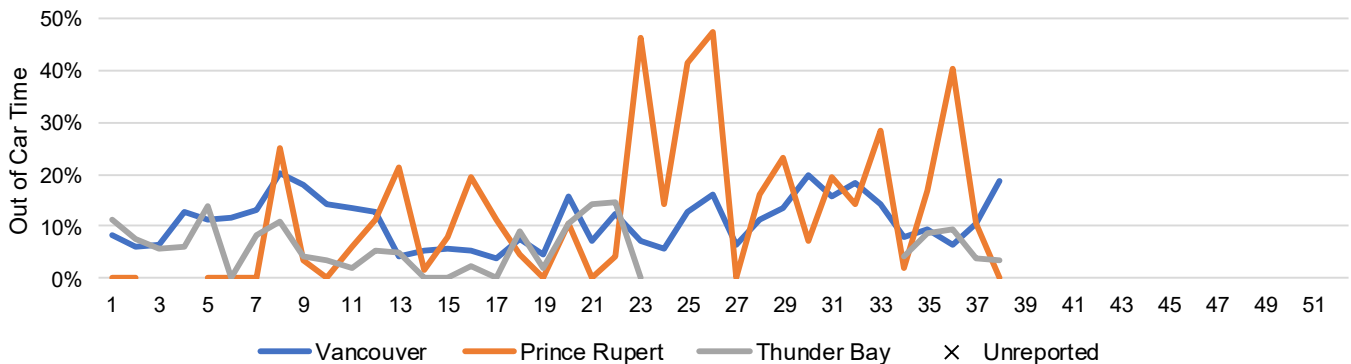
### 3-E Prince Rupert Terminal Unloads (cars), Total by Carrier, This Year vs. Last Year and the 3-Year Average



### 3-F Thunder Bay Terminal Unloads (cars), Total by Carrier, This Year vs. Last Year and the 3-Year Average



### 3-G Weekly Out-of-Car Time (% of hours out-of-cars / total hours working)



Out-of-car time is measured weekly and uses data from terminal elevators on the total number of hours the facilities are open & staffed (including overtime hours) and the corresponding number of hours that terminals have no railcars available to unload. The measure is expressed as a percentage (hours without cars to the total number of hours working).

### 3-H Monthly Unloads (cars) – This Year vs. Last Year and the 3-Year Average to Week 34 2025-26

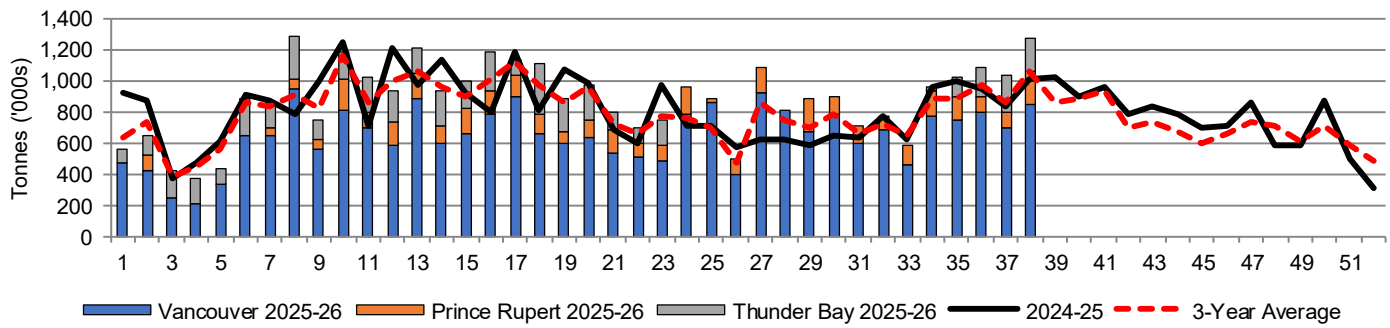
Months	Aug	Sep	Oct	Nov	Dec	Jan	Feb	Mar	Apr	May	Jun	Jul
Weeks	1-4	5-8	9-13	14-17	18-22	23-26	27-30	31-34	35-39	40-43	44-47	48-52
2025-26	19,698	39,195	57,998	45,883	45,719	31,587	36,098	35,650	-	-	-	-
2024-25	27,951	37,723	55,616	41,691	42,065	30,063	25,510	34,219	51,573	36,877	31,705	29,163
3-Yr Avg.	21,886	35,667	54,166	41,012	42,119	27,631	30,543	32,597	46,068	31,924	26,591	32,929
Var % to Last Year	-30%	4%	4%	10%	9%	5%	42%	4%				
Var % to 3-Yr Avg.	-10%	10%	7%	12%	9%	14%	18%	9%				

## 4. Shipments

### 4-A Shipments from Port Terminals ('000 tonnes) – This Year-to-Date as at Week 38 and Variance to Last Year-to-Date

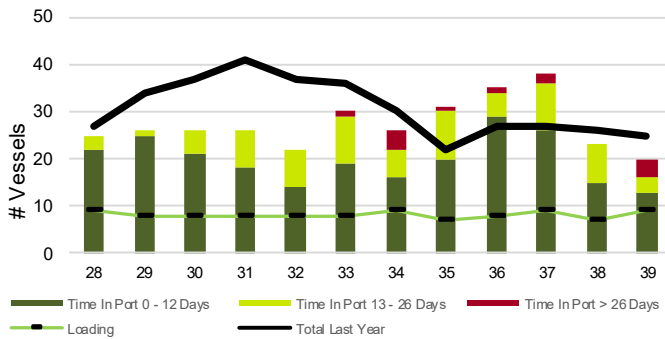
	Vancouver	Prince Rupert	West Coast	Thunder Bay	Churchill	Total	
2025-26	24,682.6	3,978.4	28,661.0	4,859.3	-	33,520.3	
2024-25	22,632.3	3,822.3	26,454.6	4,871.2	-	31,325.8	
3-Yr Avg.	22,754.1	3,399.2	26,153.4	4,741.9	-	30,895.3	
Var % to Last Year		9%	4%	8%	0%	n/a	7%
Var % to 3-Yr Avg.		8%	17%	10%	2%	n/a	8%

### 4-B Weekly Shipments ('000 tonnes) from Port Terminals – This Year vs Last Year and the 3-Year Average

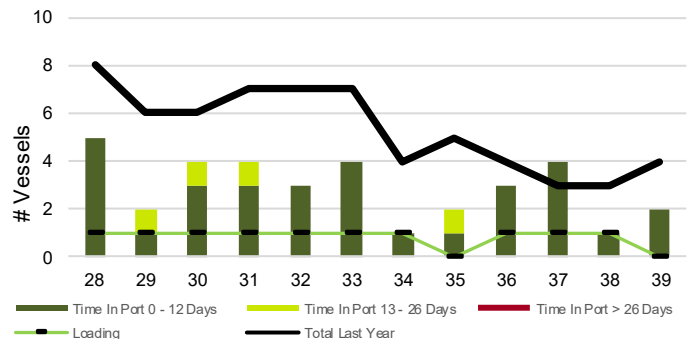


## 5. Vessels

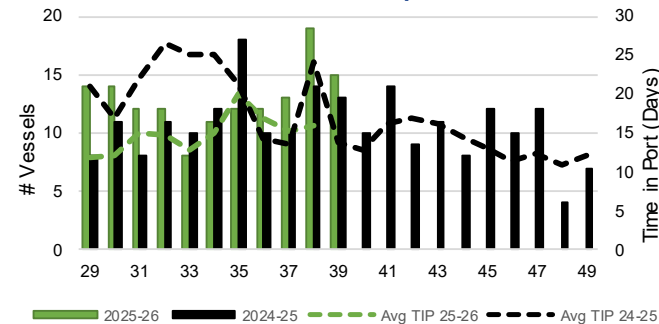
### 5-A Vessel Lineup at Vancouver as of Week 39 2025-26



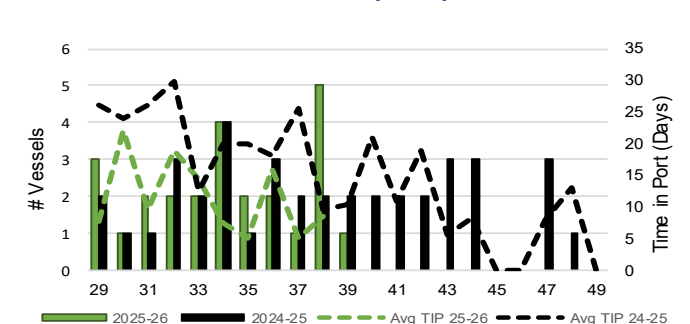
### 5-C Vessel Lineup at Prince Rupert as of Week 39 2025-26



### 5-B Vessels Cleared at Vancouver up to Week 39 2025-26



### 5-D Vessels Cleared at Prince Rupert up to Week 39 2025-26



Note: The 'Time in Port' measure for 5-A and 5-C is calculated as how long each vessel in the lineup has been in port as at Sunday 23:59 of that grain week. The 'Avg Time in Port (TIP)' measure for 5-B and 5-D is the average number of days that all vessels which cleared that week were in port. These measures use vessel data provided by the BC Chamber of Shipping and Pacific Pilotage Authority.