

Grain Monitoring Program

Weekly Performance Update

May 26, 2026

For Grain Week 41 2025-26 CY

May 11, 2026 to May 17, 2026

Summary

| | Week 41 | Week 40 | Var. from Last Year | |
|---|-----------------------|----------------|----------------------------|-----|
| 1. Stocks in Store ('000 tonnes) | | | | |
| Country Elevators | ↓ 2,879.2 | 3,554.2 | 13% | |
| % of Working Capacity | 54% | 67% | | |
| Terminal Elevators | ↓ 1,415.6 | 1,441.5 | 4% | |
| % of Working Capacity | 73% | 75% | | |
| 2. Country Deliveries ('000 tonnes) | | | | |
| Country Deliveries | ↓ 559.3 | 934.3 | 4% | |
| 3. Port Performance (Cars) | | | | |
| Vancouver Unloads | ↑ 7,331 | 6,978 | 23% | |
| Prince Rupert Unloads | ↑ 1,522 | 1,061 | 19% | |
| Churchill Unloads | — 0 | 0 | n/a | |
| Thunder Bay Unloads | ↓ 1,658 | 1,958 | -23% | |
| Total Weekly Unloads | ↑ 10,511 | 9,997 | 12% | |
| 4-Week Rolling Average | ↓ 10,722 | 10,909 | 2% | |
| Var. to 4-Week Rolling Average | -2% | -8% | | |
| YTD Unloads | 385,929 | 375,418 | 5% | |
| Weekly Out-of-Car Time | ↓ 9.1% | 9.7% | -3.7% | |
| 4. Terminal Shipments Year-to-Date ('000 tonnes) | | | | |
| Vancouver | ↑ 26,664.0 | 25,970.4 | 8% | |
| Prince Rupert | ↑ 4,274.0 | 4,174.0 | 3% | |
| Churchill | — 0.0 | 0.0 | n/a | |
| Thunder Bay | ↑ 5,554.0 | 5,267.8 | 2% | |
| Total Western Canada | ↑ 36,492.0 | 35,412.2 | 7% | |
| 5. Vessels as at May 24, 2026 | | | | |
| | Week 42 | Week 41 | Var. from Last Year | |
| Vancouver | Vessel Lineup in port | ↓ 20 | 22 | 11% |
| | Vessels Cleared | — 13 | 13 | 44% |
| | Vessels Arrived | ↓ 11 | 16 | 57% |
| Pr. Rupert | Vessel Lineup in port | — 2 | 2 | 0% |
| | Vessels Cleared | — 2 | 2 | 0% |
| | Vessels Arrived | — 2 | 2 | 0% |
| Vessels Inbound May 25, 2026 to May 31, 2026 (Week 43) | | | | |
| Vancouver | 10 | | | |
| Prince Rupert | 1 | | | |

1. Stocks in Store: (Page 2)

- Country stocks decreased to 2.88 MMT in Week 41 utilizing 54% of the system's working capacity. Space in primary elevators is good.
- Total western port terminal stocks decreased to 1.42 MMT in Week 41, utilizing 73% of the working capacity. Space at Vancouver is limited.

2. Country Deliveries: (Page 3)

- Deliveries to primary elevators were 0.56 MMT in Week 41.

3. Port Performance: (Pages 3-5)

- Total western port unloads were 2% lower than the 4-week moving average and 12% higher than Week 41 last year.
- West Coast unloads were 8,853 cars (Vancouver 7,331 and Prince Rupert 1,522), 2% higher than the 4-week moving average and 23% higher than Week 41 last year.
- Thunder Bay had 1,658 unloads, 18% lower than the 4-week moving average and 23% lower than Week 41 last year.
- The total average terminal out-of-car time (OCT) decreased to 9.1% from 9.7% the previous week. The OCT for Week 41 was 11.2% at Vancouver, 7.1% at Prince Rupert, and 1.9% at Thunder Bay.

4. Shipments: (Page 5)

- Year-to-date Western Canadian shipments from port terminal elevators at Week 41 were 7% higher than the same period last year and 8% higher than the 3-year average.

5. Vessels: (Page 5)

- Vancouver vessel lineup for Week 42 2025-26 decreased to 20 vessels (The current one-year average at Vancouver is 20 vessels). Of the 20, 7 were at berth, 8 were anchored at English Bay, 1 was anchored at Burrard Inlet, and 4 were anchored at Vancouver Island.
- Prince Rupert vessel lineup for Week 42 2025-26 remained at 2 vessels (The current one-year average at Prince Rupert is 2 vessels).
- Vessels cleared from Vancouver was 13 and from Prince Rupert was 2 in Week 42 2025-26.

1. Stocks in Store

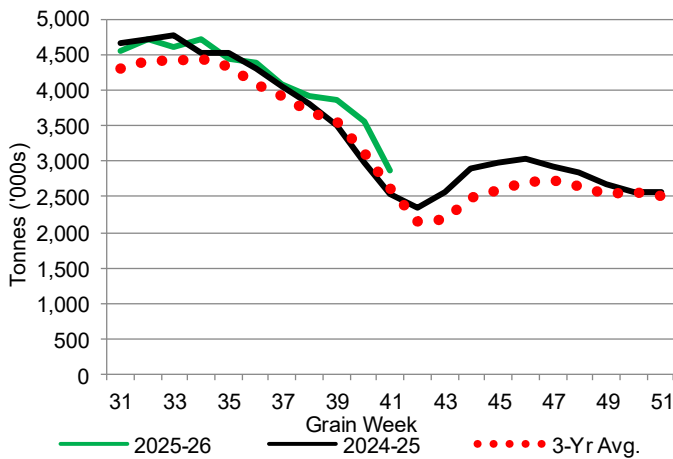
1-A1 Country Stocks ('000 tonnes) – Week 41

| | MB | SK | AB | BC | Total |
|----------------------------|---------|---------|---------|------|---------|
| 2025-26 | 628.0 | 1,338.7 | 898.5 | 14.0 | 2,879.2 |
| 2024-25 | 519.4 | 1,235.9 | 770.2 | 12.8 | 2,538.3 |
| 3-Yr Avg. | 555.1 | 1,231.0 | 813.8 | 14.7 | 2,614.6 |
| Var % - LY | 21% | 8% | 17% | 9% | 13% |
| Var % 3-Yr Avg. | 13% | 9% | 10% | -5% | 10% |
| Storage Capacity | 1,618.3 | 4,073.2 | 2,493.8 | 30.6 | 8,215.9 |
| Estimated Working Capacity | 1,051.9 | 2,647.6 | 1,621.0 | 19.9 | 5,340.4 |
| 25-26 % of Wkg Cap | 60% | 51% | 55% | 70% | 54% |

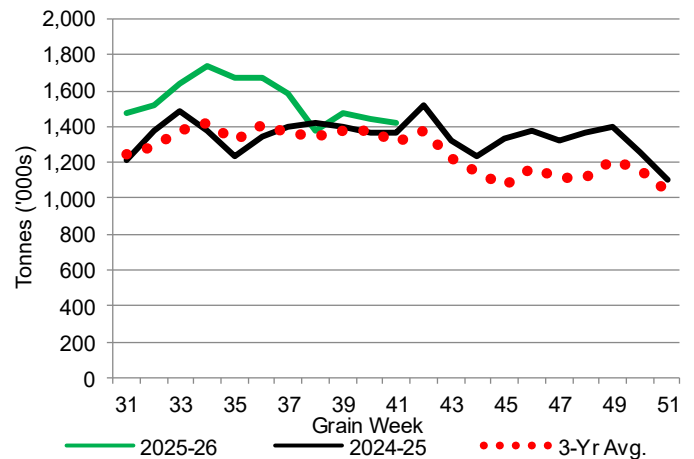
1-B1 Terminal Stocks ('000 tonnes) – Week 41

| | VC | PR | West Coast | CH | TB | Total |
|----------------------------|---------|-------|------------|-------|---------|---------|
| 2025-26 | 819.9 | 77.9 | 897.8 | 0.7 | 517.1 | 1,415.6 |
| 2024-25 | 736 | 156.7 | 892.7 | 0.7 | 467.8 | 1,361.2 |
| 3-Yr Avg. | 720.8 | 106.4 | 827.2 | 0.7 | 482.5 | 1,310.4 |
| Var % - LY | 11% | -50% | 1% | 0% | 11% | 4% |
| Var % 3-Yr Avg. | 14% | -27% | 9% | 0% | 7% | 8% |
| Storage Capacity | 1,275.5 | 209.5 | 1,485.0 | 140.0 | 1,127.5 | 2,752.5 |
| Estimated Working Capacity | 892.9 | 146.7 | 1,039.6 | 98.0 | 789.2 | 1,926.8 |
| 25-26 % of Wkg Cap | 92% | 53% | 86% | 1% | 66% | 73% |

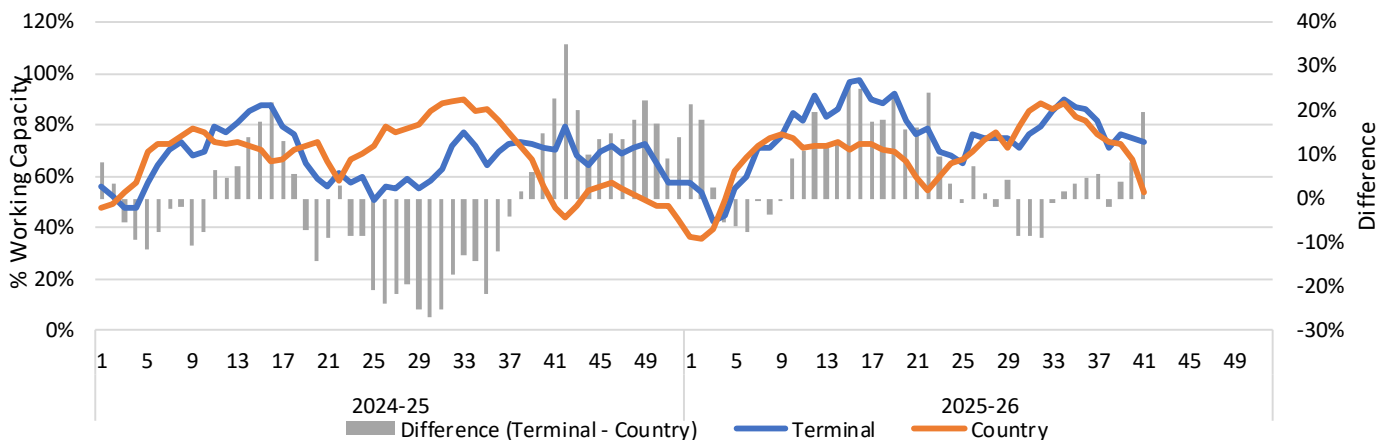
1-A2 Weekly Country Stocks in Store



1-B2 Weekly Terminal Stocks in Store



1-C Weekly Stock Balance

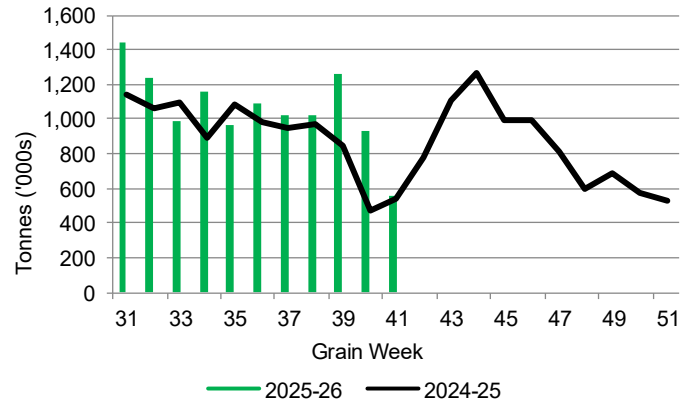


2. Country Deliveries

2-A Country Deliveries ('000 tonnes) – Week 41

| | MB | SK | AB | BC | Total |
|--------------------|-------|-------|-------|------|-------|
| 2025-26 | 85.6 | 258.3 | 213.4 | 2.0 | 559.3 |
| 2024-25 | 104.3 | 210.1 | 220.8 | 2.8 | 538.0 |
| 4 Wk Avg | 179.4 | 426.2 | 335.0 | 4.3 | 944.8 |
| Var % to Last Year | -18% | 23% | -3% | -29% | 4% |
| Var % To 4 Wk Avg | -52% | -39% | -36% | -54% | -41% |

2-B 2025-26 Weekly Country Deliveries



3. Port Performance

3-A Weekly Unloads by Port (Cars) – This Year for Week 41, 4-Week Moving Average and Variances

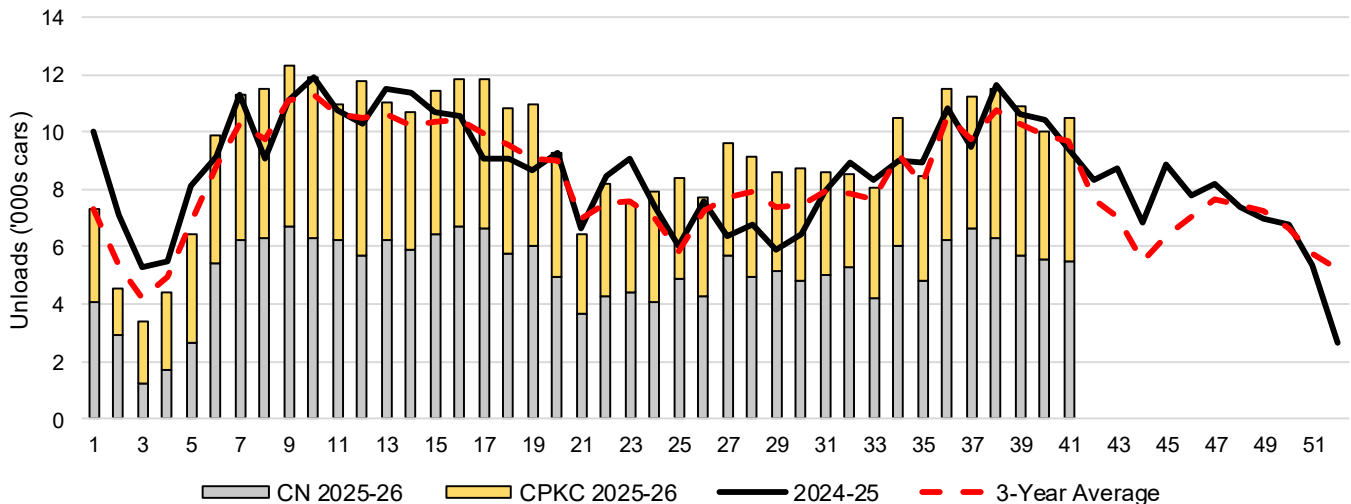
| | Vancouver | Prince Rupert | West Coast | Thunder Bay | Churchill | Total |
|--------------------|-----------|---------------|------------|-------------|-----------|--------|
| 2025-26 | 7,331 | 1,522 | 8,853 | 1,658 | - | 10,511 |
| 2024-25 | 5,942 | 1,284 | 7,226 | 2,160 | n/a | 9,386 |
| 4-Wk Avg. | 7,336 | 1,353 | 8,689 | 2,034 | - | 10,722 |
| Var % to Last Year | 23% | 19% | 23% | -23% | n/a | 12% |
| Var % to 4-Wk Avg. | 0% | 13% | 2% | -18% | n/a | -2% |

3-B Terminal Unloads by Port – This Year-to-Date as at Week 41 and Variances

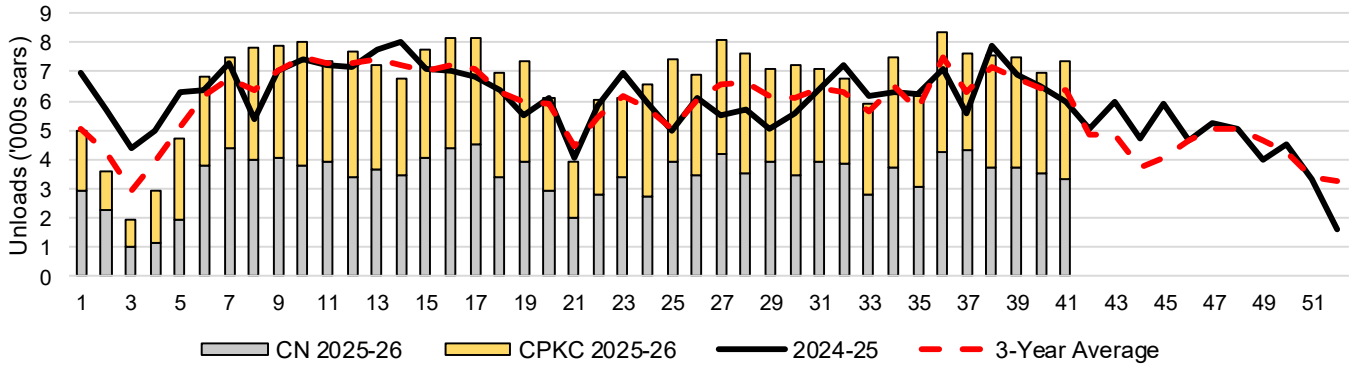
| YTD Unloads (cars) | Vancouver | Prince Rupert | West Coast | Thunder Bay | Churchill | Total |
|--------------------|-----------|---------------|------------|-------------|-----------|---------|
| 2025-26 | 275,082 | 44,899 | 319,981 | 65,948 | - | 385,929 |
| 2024-25 | 258,659 | 43,191 | 301,850 | 64,362 | - | 366,212 |
| 3-Yr Avg | 253,292 | 38,569 | 291,861 | 62,888 | - | 354,749 |
| Var % to Last Year | 6% | 4% | 6% | 2% | n/a | 5% |
| Var % to 3-Yr Avg | 9% | 16% | 10% | 5% | n/a | 9% |

| YTD Unloads ('000 tonnes) | Vancouver | Prince Rupert | West Coast | Thunder Bay | Churchill | Total |
|---------------------------|-----------|---------------|------------|-------------|-----------|----------|
| 2025-26 | 26,474.5 | 4,355.9 | 30,830.4 | 6,391.1 | - | 37,221.5 |
| 2024-25 | 24,693.9 | 4,171.6 | 28,865.5 | 6,242.4 | - | 35,107.9 |
| 3-Yr Avg. | 24,308.6 | 3,733.8 | 28,042.3 | 6,102.4 | - | 34,144.7 |
| Var % to Last Year | 7% | 4% | 7% | 2% | n/a | 6% |
| Var % to 3-Yr Avg. | 9% | 17% | 10% | 5% | n/a | 9% |

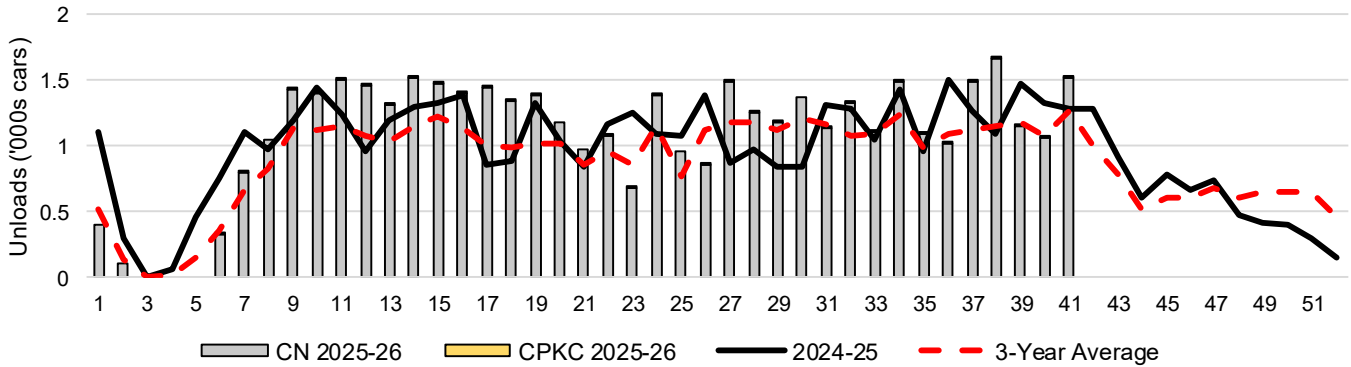
3-C Western Port Terminal Unloads (cars), Total by Carrier, This Year vs. Last Year and the 3-Year Average



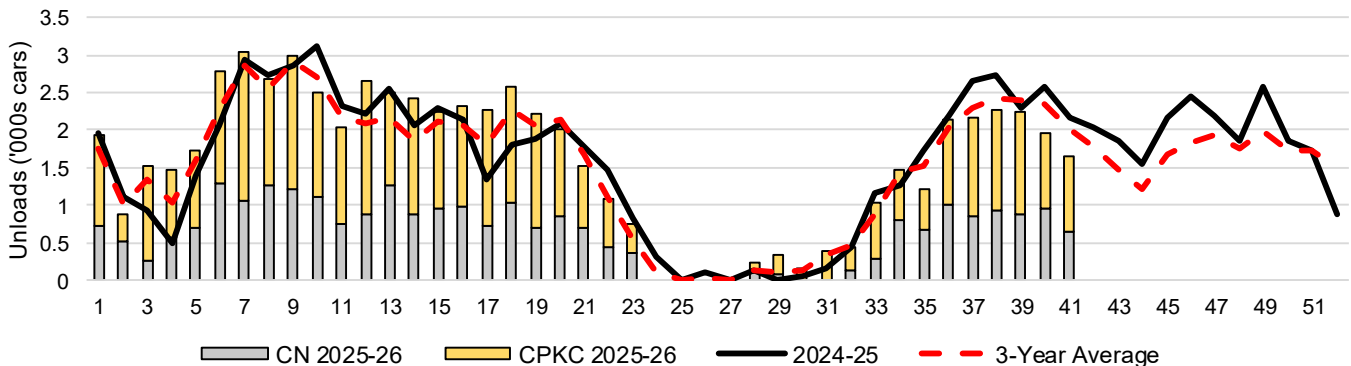
3-D Vancouver Terminal Unloads (cars), Total by Carrier, This Year vs. Last Year and the 3-Year Average



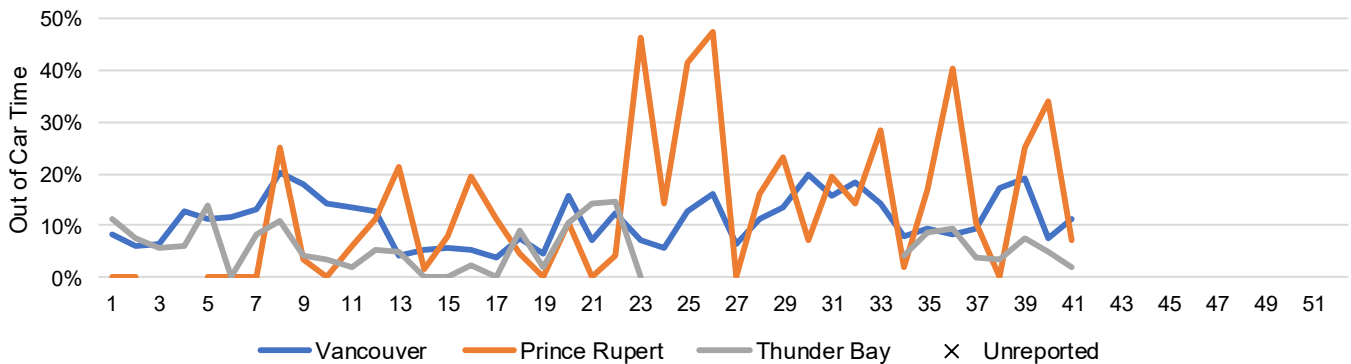
3-E Prince Rupert Terminal Unloads (cars), Total by Carrier, This Year vs. Last Year and the 3-Year Average



3-F Thunder Bay Terminal Unloads (cars), Total by Carrier, This Year vs. Last Year and the 3-Year Average



3-G Weekly Out-of-Car Time (% of hours out-of-cars / total hours working)



Out-of-car time is measured weekly and uses data from terminal elevators on the total number of hours the facilities are open & staffed (including overtime hours) and the corresponding number of hours that terminals have no railcars available to unload. The measure is expressed as a percentage (hours without cars to the total number of hours working).

3-H Monthly Unloads (cars) – This Year vs. Last Year and the 3-Year Average to Week 39 2025-26

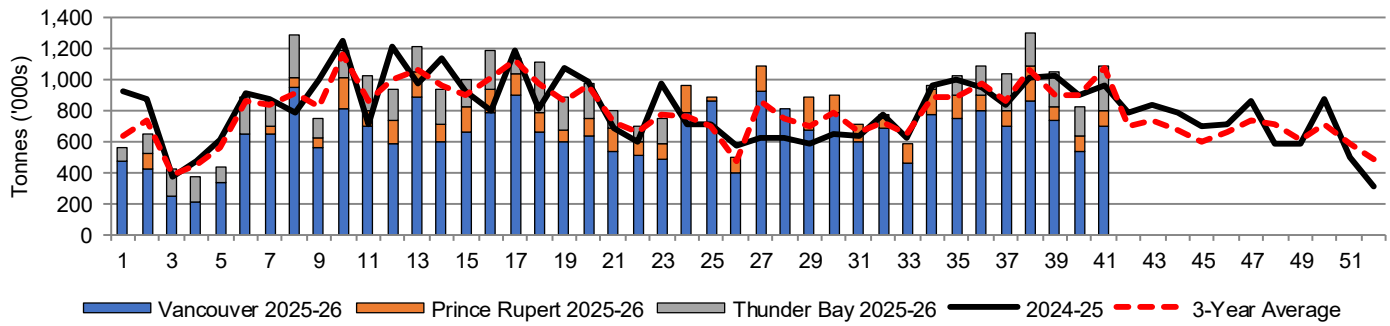
| Months | Aug | Sep | Oct | Nov | Dec | Jan | Feb | Mar | Apr | May | Jun | Jul |
|--------------------|--------|--------|--------|--------|--------|--------|--------|--------|--------|--------|--------|--------|
| Weeks | 1-4 | 5-8 | 9-13 | 14-17 | 18-22 | 23-26 | 27-30 | 31-34 | 35-39 | 40-43 | 44-47 | 48-52 |
| 2025-26 | 19,698 | 39,195 | 57,998 | 45,883 | 45,720 | 31,587 | 36,098 | 35,650 | 53,592 | - | - | - |
| 2024-25 | 27,951 | 37,723 | 55,616 | 41,691 | 42,065 | 30,063 | 25,510 | 34,219 | 51,573 | 36,877 | 31,705 | 29,163 |
| 3-Yr Avg. | 21,886 | 35,667 | 54,166 | 41,012 | 42,120 | 27,631 | 30,543 | 32,597 | 49,584 | 31,924 | 26,591 | 32,929 |
| Var % to Last Year | -30% | 4% | 4% | 10% | 9% | 5% | 42% | 4% | 4% | | | |
| Var % to 3-Yr Avg. | -10% | 10% | 7% | 12% | 9% | 14% | 18% | 9% | 8% | | | |

4. Shipments

4-A Shipments from Port Terminals ('000 tonnes) – This Year-to-Date as at Week 41 and Variance to Last Year-to-Date

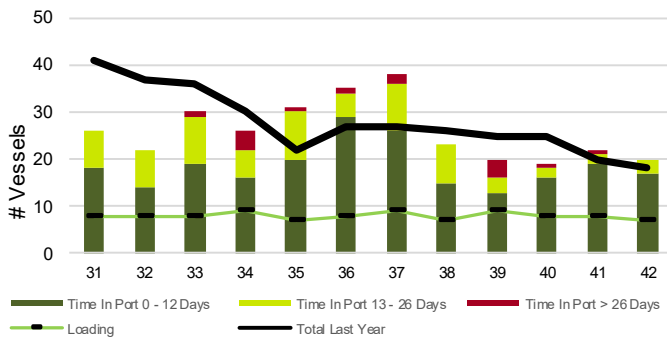
| | Vancouver | Prince Rupert | West Coast | Thunder Bay | Churchill | Total | |
|--------------------|-----------|---------------|------------|-------------|-----------|----------|----|
| 2025-26 | 26,664.0 | 4,274.0 | 30,938.0 | 5,554.0 | - | 36,492.0 | |
| 2024-25 | 24,615.3 | 4,166.4 | 28,781.7 | 5,439.2 | - | 34,220.9 | |
| 3-Yr Avg. | 24,676.2 | 3,711.0 | 28,387.2 | 5,380.0 | - | 33,767.1 | |
| Var % to Last Year | | 8% | 3% | 7% | 2% | n/a | 7% |
| Var % to 3-Yr Avg. | | 8% | 15% | 9% | 3% | n/a | 8% |

4-B Weekly Shipments ('000 tonnes) from Port Terminals – This Year vs Last Year and the 3-Year Average

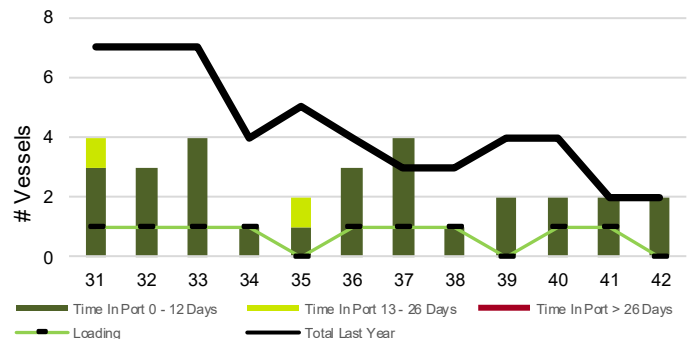


5. Vessels

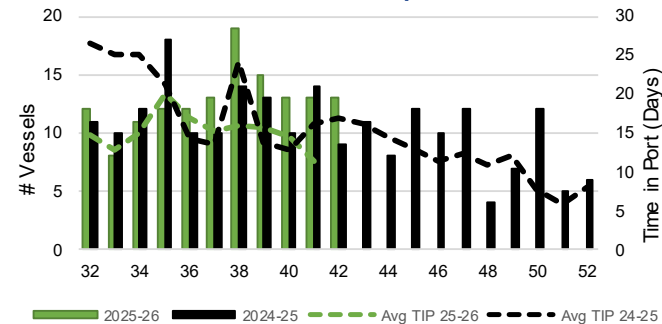
5-A Vessel Lineup at Vancouver as of Week 42 2025-26



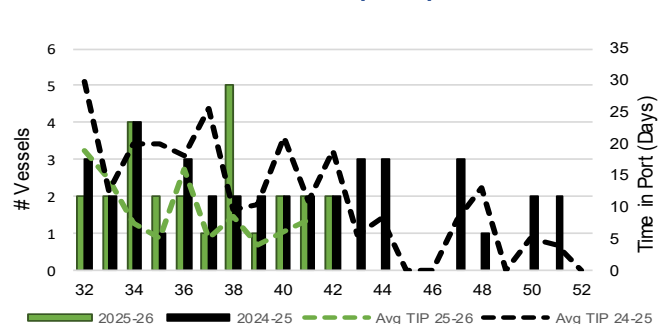
5-C Vessel Lineup at Prince Rupert as of Week 42 2025-26



5-B Vessels Cleared at Vancouver up to Week 42 2025-26



5-D Vessels Cleared at Prince Rupert up to Week 42 2025-26



Note: The 'Time in Port' measure for 5-A and 5-C is calculated as how long each vessel in the lineup has been in port as at Sunday 23:59 of that grain week. The 'Avg Time in Port (TIP)' measure for 5-B and 5-D is the average number of days that all vessels which cleared that week were in port. These measures use vessel data provided by the BC Chamber of Shipping and Pacific Pilotage Authority.