

Grain Monitoring Program

Weekly Performance Update

June 09, 2026

For Grain Week 43 2025-26 CY
May 25, 2026 to May 31, 2026

Summary

	Week 43	Week 42	Var. from Last Year	
1. Stocks in Store ('000 tonnes)				
Country Elevators	↓ 2,223.2	2,415.9	-13%	
% of Working Capacity	42%	45%		
Terminal Elevators	↓ 1,405.5	1,588.9	7%	
% of Working Capacity	73%	82%		
2. Country Deliveries ('000 tonnes)				
Country Deliveries	↑ 863.8	659.8	-22%	
3. Port Performance (Cars)				
Vancouver Unloads	↓ 6,734	7,373	13%	
Prince Rupert Unloads	↑ 1,230	1,063	35%	
Churchill Unloads	— 0	0	n/a	
Thunder Bay Unloads	↓ 1,425	2,026	-23%	
Total Weekly Unloads	↓ 9,389	10,462	7%	
4-Week Rolling Average	↓ 10,090	10,465	9%	
Var. to 4-Week Rolling Average	-7%	0%		
YTD Unloads	405,786	396,397	6%	
Weekly Out-of-Car Time	↓ 5.2%	11.8%	-17.5%	
4. Terminal Shipments Year-to-Date ('000 tonnes)				
Vancouver	↑ 27,829.9	27,336.0	9%	
Prince Rupert	↑ 4,531.5	4,388.2	2%	
Churchill	— 0.0	0.0	n/a	
Thunder Bay	↑ 6,070.5	5,716.7	5%	
Total Western Canada	↑ 38,431.9	37,440.9	7%	
5. Vessels as at Jun 7, 2026				
	Week 44	Week 43	Var. from Last Year	
Vancouver	Vessel Lineup in port	↑ 18	17	0%
	Vessels Cleared	↑ 12	11	50%
	Vessels Arrived	↑ 13	8	8%
Pr. Rupert	Vessel Lineup in port	— 2	2	n/a
	Vessels Cleared	↑ 3	1	0%
	Vessels Arrived	↑ 3	1	n/a
Vessels Inbound Jun 08, 2026 to Jun 14, 2026 (Week 45)				
Vancouver	12			
Prince Rupert	1			

1. Stocks in Store: (Page 2)

- Country stocks decreased to 2.22 MMT in Week 43 utilizing 42% of the system's working capacity. Space in primary elevators is good.
- Total western port terminal stocks decreased to 1.41 MMT in Week 43, utilizing 73% of the working capacity. Space at Prince Rupert is limited.

2. Country Deliveries: (Page 3)

- Deliveries to primary elevators were 0.86 MMT in Week 43.

3. Port Performance: (Pages 3-5)

- Total western port unloads were 7% lower than the 4-week moving average and 7% higher than Week 43 last year.
- West Coast unloads were 7,964 cars (Vancouver 6,734 and Prince Rupert 1,230), 4% lower than the 4-week moving average and 16% higher than Week 43 last year.
- Thunder Bay had 1,425 unloads, 19% lower than the 4-week moving average and 23% lower than Week 43 last year.
- The total average terminal out-of-car time (OCT) decreased to 5.2% from 11.8% the previous week. The OCT for Week 43 was 5.4% at Vancouver and 4.2% at Thunder Bay. At the time of publishing, Prince Rupert had not yet reported Week 43 OCT.

4. Shipments: (Page 5)

- Year-to-date Western Canadian shipments from port terminal elevators at Week 43 were 7% higher than the same period last year and 8% higher than the 3-year average.

5. Vessels: (Page 5)

- Vancouver vessel lineup for Week 44 2025-26 increased to 18 vessels (The current one-year average at Vancouver is 20 vessels). Of the 18, 9 were at berth, 7 were anchored at English Bay, and 2 were anchored at Vancouver Island.
- Prince Rupert vessel lineup for Week 44 2025-26 remained at 2 vessels (The current one-year average at Prince Rupert is 2 vessels).
- Vessels cleared from Vancouver was 12 and from Prince Rupert was 3 in Week 44 2025-26.

1. Stocks in Store

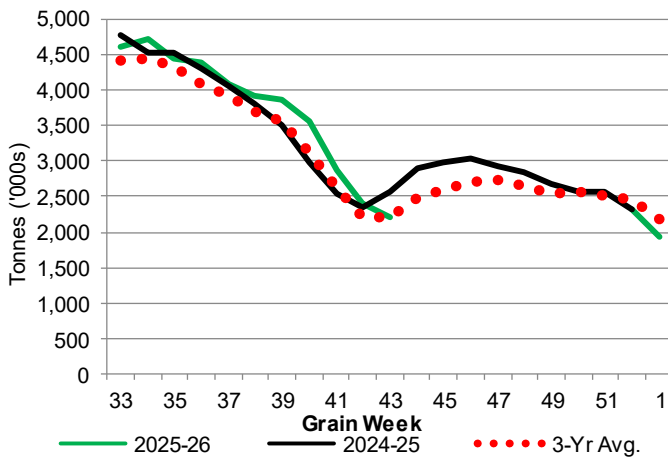
1-A1 Country Stocks ('000 tonnes) – Week 43

	MB	SK	AB	BC	Total
2025-26	506.1	912.3	795.4	9.4	2,223.2
2024-25	547.2	1,288.8	715.6	15.1	2,566.7
3-Yr Avg.	476.7	1,017.7	713.1	13.0	2,220.5
Var % - LY	-8%	-29%	11%	-38%	-13%
Var % 3-Yr Avg.	6%	-10%	12%	-28%	0%
Storage Capacity	1,618.3	4,073.2	2,493.8	30.6	8,215.9
Estimated Working Capacity	1,051.9	2,647.6	1,621.0	19.9	5,340.4
25-26 % of Wkg Cap	48%	34%	49%	47%	42%

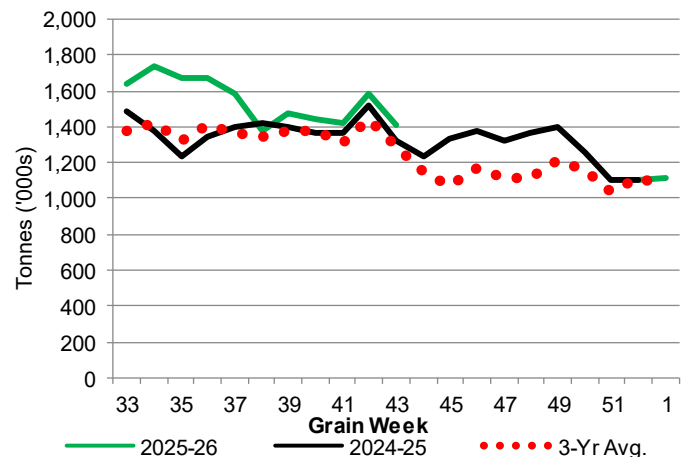
1-B1 Terminal Stocks ('000 tonnes) – Week 43

	VC	PR	West Coast	CH	TB	Total
2025-26	742.6	135.9	878.5	0.7	526.3	1,405.5
2024-25	674	105.5	779.5	0.7	537.9	1,318.1
3-Yr Avg.	670.1	108.7	778.8	0.7	509.9	1,289.4
Var % - LY	10%	29%	13%	0%	-2%	7%
Var % 3-Yr Avg.	11%	25%	13%	0%	3%	9%
Storage Capacity	1,275.5	209.5	1,485.0	140.0	1,127.5	2,752.5
Estimated Working Capacity	892.9	146.7	1,039.6	98.0	789.2	1,926.8
25-26 % of Wkg Cap	83%	93%	85%	1%	67%	73%

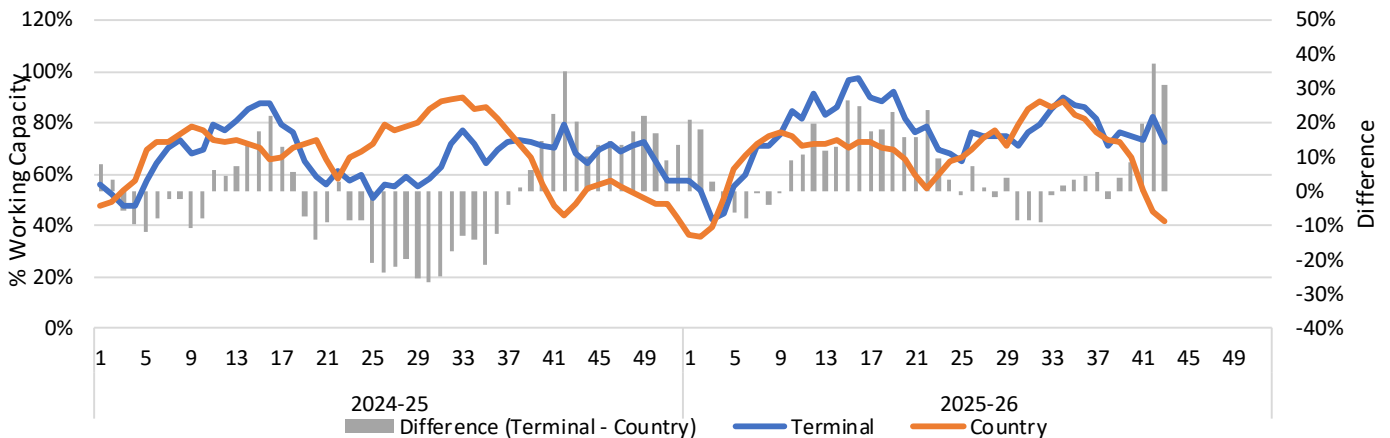
1-A2 Weekly Country Stocks in Store



1-B2 Weekly Terminal Stocks in Store



1-C Weekly Stock Balance

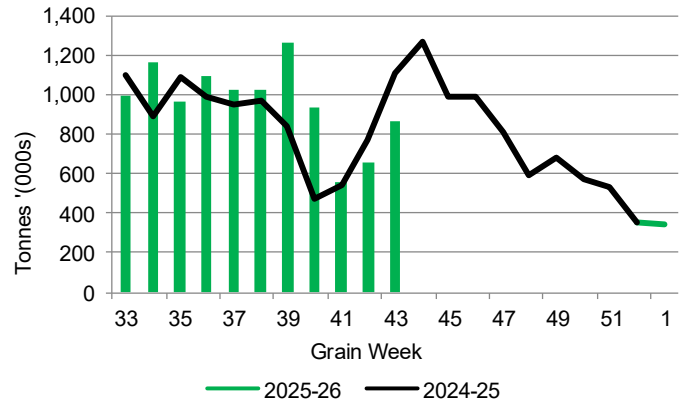


2. Country Deliveries

2-A Country Deliveries ('000 tonnes) – Week 43

	MB	SK	AB	BC	Total
2025-26	149.6	321.5	387.2	5.5	863.8
2024-25	162.6	617.6	320.6	4.7	1,105.5
4 Wk Avg	136.5	315.6	298.4	3.9	754.3
Var % to Last Year	-8%	-48%	21%	17%	-22%
Var % To 4 Wk Avg	10%	2%	30%	41%	15%

2-B 2025-26 Weekly Country Deliveries



3. Port Performance

3-A Weekly Unloads by Port (Cars) – This Year for Week 43, 4-Week Moving Average and Variances

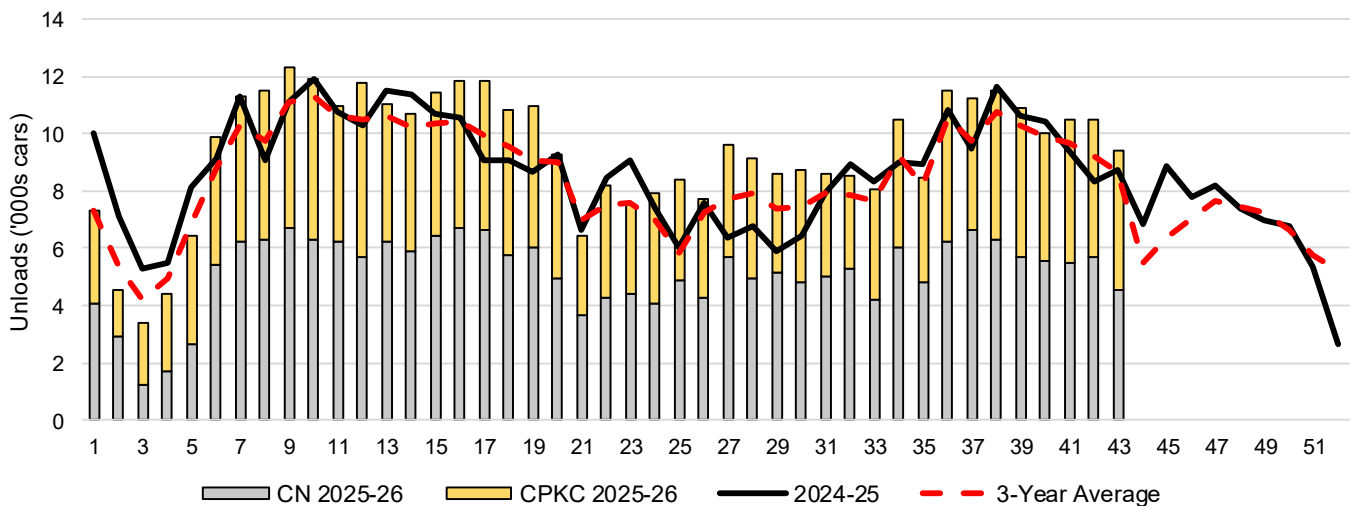
	Vancouver	Prince Rupert	West Coast	Thunder Bay	Churchill	Total
2025-26	6,734	1,230	7,964	1,425	-	9,389
2024-25	5,969	912	6,881	1,862	n/a	8,743
4-Wk Avg.	7,104	1,219	8,323	1,767	-	10,090
Var % to Last Year	13%	35%	16%	-23%	n/a	7%
Var % to 4-Wk Avg.	-5%	1%	-4%	-19%	n/a	-7%

3-B Terminal Unloads by Port – This Year-to-Date as at Week 43 and Variances

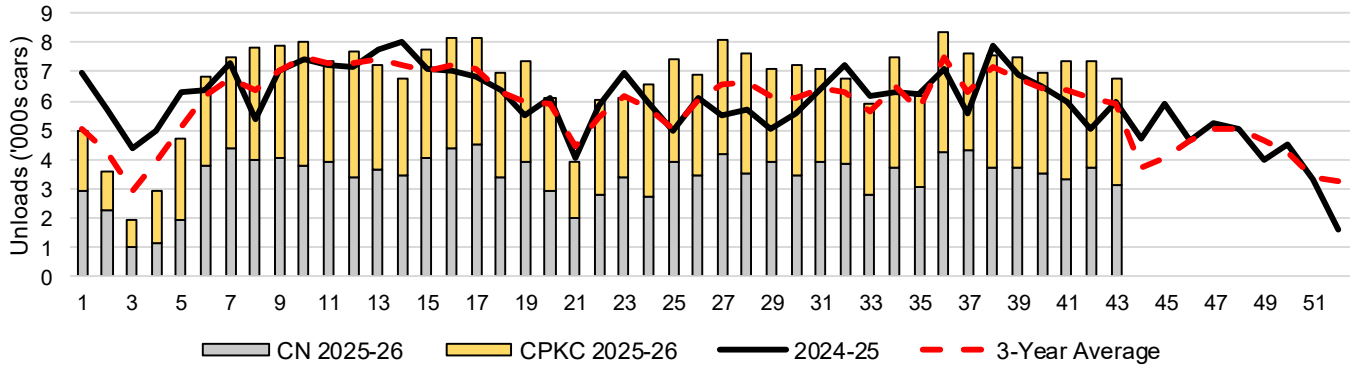
YTD Unloads (cars)	Vancouver	Prince Rupert	West Coast	Thunder Bay	Churchill	Total
2025-26	289,190	47,192	336,382	69,404	-	405,786
2024-25	269,646	45,382	315,028	68,260	-	383,288
3-Yr Avg	265,275	40,690	305,965	66,629	-	372,594
Var % to Last Year	7%	4%	7%	2%	n/a	6%
Var % to 3-Yr Avg	9%	16%	10%	4%	n/a	9%

YTD Unloads ('000 tonnes)	Vancouver	Prince Rupert	West Coast	Thunder Bay	Churchill	Total
2025-26	27,825.8	4,576.8	32,402.6	6,727.3	-	39,129.9
2024-25	25,744.9	4,384.7	30,129.6	6,627.6	-	36,757.2
3-Yr Avg.	25,453.6	3,940.6	29,394.2	6,468.3	-	35,862.5
Var % to Last Year	8%	4%	8%	2%	n/a	6%
Var % to 3-Yr Avg.	9%	16%	10%	4%	n/a	9%

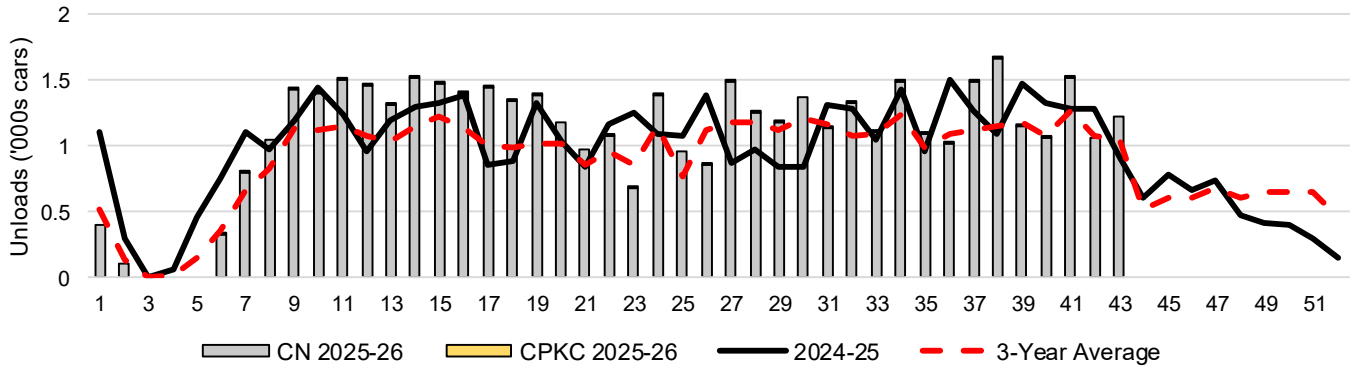
3-C Western Port Terminal Unloads (cars), Total by Carrier, This Year vs. Last Year and the 3-Year Average



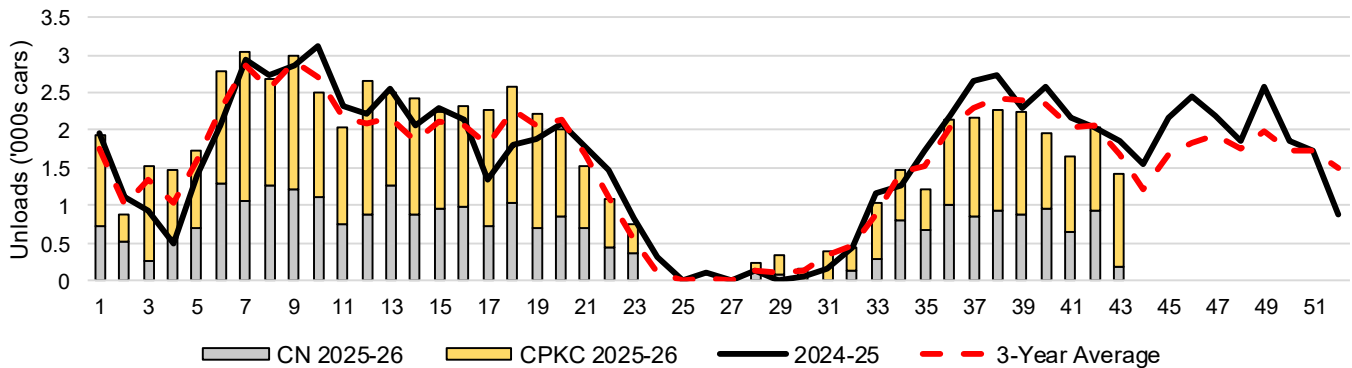
3-D Vancouver Terminal Unloads (cars), Total by Carrier, This Year vs. Last Year and the 3-Year Average



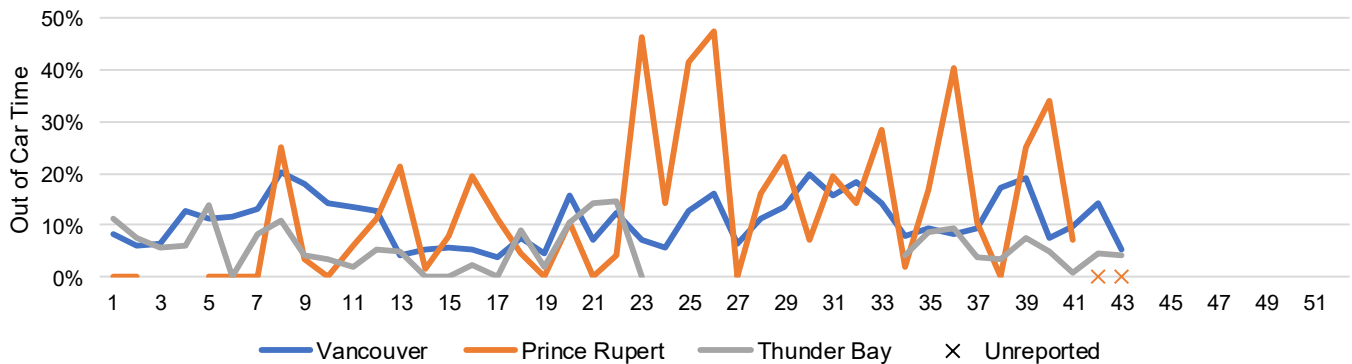
3-E Prince Rupert Terminal Unloads (cars), Total by Carrier, This Year vs. Last Year and the 3-Year Average



3-F Thunder Bay Terminal Unloads (cars), Total by Carrier, This Year vs. Last Year and the 3-Year Average



3-G Weekly Out-of-Car Time (% of hours out-of-cars / total hours working)



Out-of-car time is measured weekly and uses data from terminal elevators on the total number of hours the facilities are open & staffed (including overtime hours) and the corresponding number of hours that terminals have no railcars available to unload. The measure is expressed as a percentage (hours without cars to the total number of hours working).

3-H Monthly Unloads (cars) – This Year vs. Last Year and the 3-Year Average to Week 43 2025-26

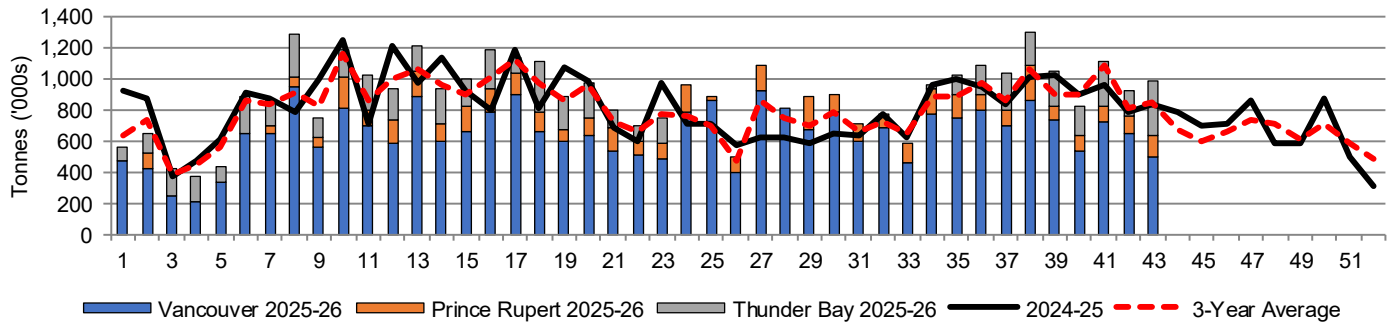
Months	Aug	Sep	Oct	Nov	Dec	Jan	Feb	Mar	Apr	May	Jun	Jul
Weeks	1-4	5-8	9-13	14-17	18-22	23-26	27-30	31-34	35-39	40-43	44-47	48-52
2025-26	19,698	39,195	57,998	45,883	45,724	31,587	36,099	35,650	53,592	40,360	-	-
2024-25	27,951	37,723	55,616	41,691	42,065	30,063	25,510	34,219	51,573	36,877	31,705	29,163
3-Yr Avg.	21,886	35,667	54,166	41,012	42,121	27,631	30,543	32,597	49,584	37,386	26,591	32,929
Var % to Last Year	-30%	4%	4%	10%	9%	5%	42%	4%	4%	9%		
Var % to 3-Yr Avg.	-10%	10%	7%	12%	9%	14%	18%	9%	8%	8%		

4. Shipments

4-A Shipments from Port Terminals ('000 tonnes) – This Year-to-Date as at Week 43 and Variance to Last Year-to-Date

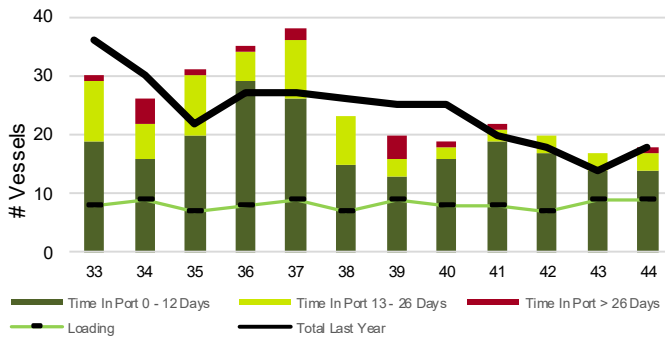
	Vancouver	Prince Rupert	West Coast	Thunder Bay	Churchill	Total	
2025-26	27,829.9	4,531.5	32,361.4	6,070.5	-	38,431.9	
2024-25	25,629.7	4,424.1	30,053.8	5,776.9	-	35,830.7	
3-Yr Avg.	25,709.7	3,929.0	29,638.7	5,804.3	-	35,443.0	
Var % to Last Year		9%	2%	8%	5%	n/a	7%
Var % to 3-Yr Avg.		8%	15%	9%	5%	n/a	8%

4-B Weekly Shipments ('000 tonnes) from Port Terminals – This Year vs Last Year and the 3-Year Average

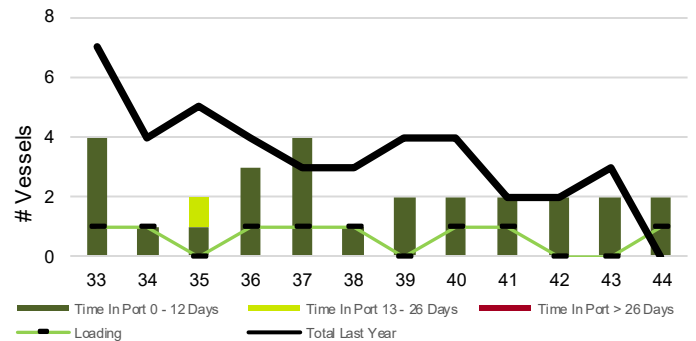


5. Vessels

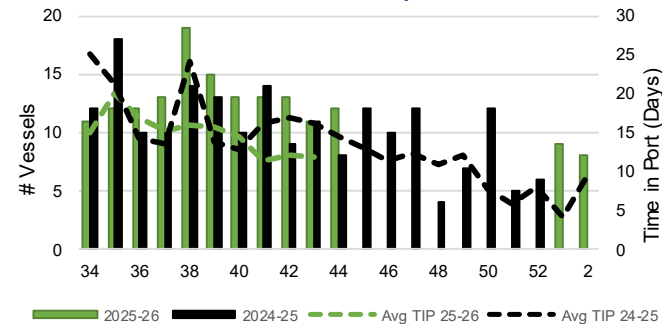
5-A Vessel Lineup at Vancouver as of Week 44 2025-26



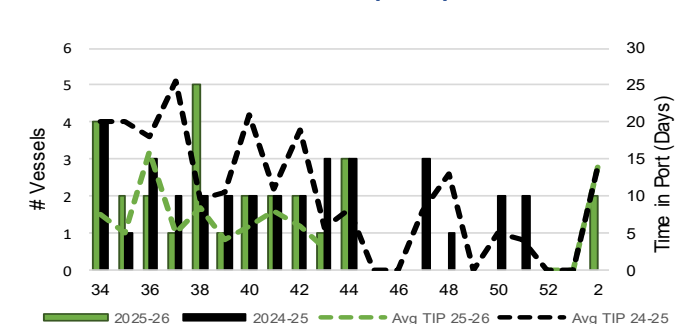
5-C Vessel Lineup at Prince Rupert as of Week 44 2025-26



5-B Vessels Cleared at Vancouver up to Week 44 2025-26



5-D Vessels Cleared at Prince Rupert up to Week 44 2025-26



Note: The 'Time in Port' measure for 5-A and 5-C is calculated as how long each vessel in the lineup has been in port as at Sunday 23:59 of that grain week. The 'Avg Time in Port (TIP)' measure for 5-B and 5-D is the average number of days that all vessels which cleared that week were in port. These measures use vessel data provided by the BC Chamber of Shipping and Pacific Pilotage Authority.