

# Grain Monitoring Program

## Weekly Performance Update

June 30, 2026

For Grain Week 46 2025-26 CY  
June 15, 2026 to June 21, 2026

### Summary

	Week 46	Week 45	Var. from Last Year
<b>1. Stocks in Store ('000 tonnes)</b>			
Country Elevators	↑ 2,950.4	2,596.5	-3%
% of Working Capacity	55%	49%	
Terminal Elevators	↓ 1,480.7	1,608.9	7%
% of Working Capacity	77%	84%	

<b>2. Country Deliveries ('000 tonnes)</b>			
Country Deliveries	↑ 1,390.1	1,339.0	40%

<b>3. Port Performance (Cars)</b>			
Vancouver Unloads	↑ 6,170	5,472	32%
Prince Rupert Unloads	↓ 580	976	-13%
Churchill Unloads	— 0	0	n/a
Thunder Bay Unloads	↑ 2,014	1,579	-18%
Total Weekly Unloads	↑ 8,764	8,027	13%
4-Week Rolling Average	↓ 8,414	8,838	4%
Var. to 4-Week Rolling Average	4%	-9%	
YTD Unloads	430,052	421,288	6%
Weekly Out-of-Car Time	↑ 21.3%	15.8%	49.8%

<b>4. Terminal Shipments Year-to-Date ('000 tonnes)</b>			
Vancouver	↑ 29,140.0	28,681.1	7%
Prince Rupert	↑ 4,773.6	4,639.7	5%
Churchill	— 0.0	0.0	n/a
Thunder Bay	↑ 6,613.3	6,384.7	5%
Total Western Canada	↑ 40,526.9	39,705.5	7%

5. Vessels as at Jun 28, 2026		Week 47	Week 46	Var. from Last Year
Vancouver	Vessel Lineup in port	↓ 17	22	183%
	Vessels Cleared	↑ 12	10	0%
	Vessels Arrived	↓ 7	12	600%
Pr. Rupert	Vessel Lineup in port	↑ 2	1	100%
	Vessels Cleared	↓ 1	2	-67%
	Vessels Arrived	↑ 2	1	n/a

<b>Vessels Inbound Jun 29, 2026 to Jul 05, 2026 (Week 48)</b>	
Vancouver	12
Prince Rupert	3

#### 1. Stocks in Store: (Page 2)

- Country stocks increased to 2.95 MMT in Week 46 utilizing 55% of the system's working capacity. Space in primary elevators is good.
- Total western port terminal stocks decreased to 1.48 MMT in Week 46, utilizing 77% of the working capacity. Space on the West Coast is limited.

#### 2. Country Deliveries: (Page 3)

- Deliveries to primary elevators were 1.39 MMT in Week 46.

#### 3. Port Performance: (Pages 3-5)

- Total western port unloads were 4% higher than the 4-week moving average and 13% higher than Week 46 last year.
- West Coast unloads were 6,750 cars (Vancouver 6,170 and Prince Rupert 580), 1% higher than the 4-week moving average and 26% higher than Week 46 last year.
- Thunder Bay had 2,014 unloads, 18% higher than the 4-week moving average and 18% lower than Week 46 last year.
- The total average terminal out-of-car time (OCT) increased to 21.3% from 15.8% the previous week. The OCT for Week 46 was 15.1% at Vancouver, 51.8% at Prince Rupert, and 2.7% at Thunder Bay.

#### 4. Shipments: (Page 5)

- Year-to-date Western Canadian shipments from port terminal elevators at Week 46 were 7% higher than the same period last year and 8% higher than the 3-year average.

#### 5. Vessels: (Page 5)

- Vancouver vessel lineup for Week 47 2025-26 decreased to 17 vessels (The current one-year average at Vancouver is 21 vessels). Of the 17, 7 were at berth, 6 were anchored at English Bay, 1 was anchored at Burrard Inlet, and 3 were anchored at Vancouver Island.
- Prince Rupert vessel lineup for Week 47 2025-26 increased to 2 vessels (The current one-year average at Prince Rupert is 2 vessels).
- Vessels cleared from Vancouver was 12 and from Prince Rupert was 1 in Week 47 2025-26.

# 1. Stocks in Store

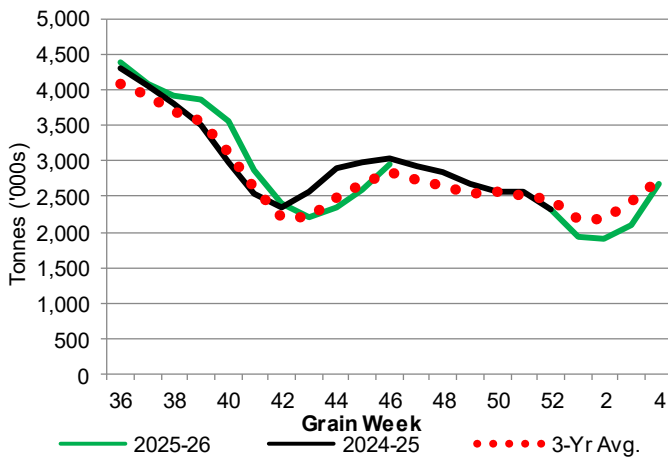
1-A1 Country Stocks ('000 tonnes) – Week 46

	MB	SK	AB	BC	Total
2025-26	610.3	1,321.2	1,008.0	10.9	2,950.4
2024-25	628.7	1,588.2	803.5	16.3	3,036.7
3-Yr Avg.	568.9	1,397.4	870.6	11.6	2,848.5
Var % - LY	-3%	-17%	25%	-33%	-3%
Var % 3-Yr Avg.	7%	-5%	16%	-6%	4%
Storage Capacity	1,630.5	4,021.6	2,498.3	30.6	8,181.0
Estimated Working Capacity	1,059.8	2,614.0	1,623.9	19.9	5,317.6
25-26 % of Wkg Cap	58%	51%	62%	55%	55%

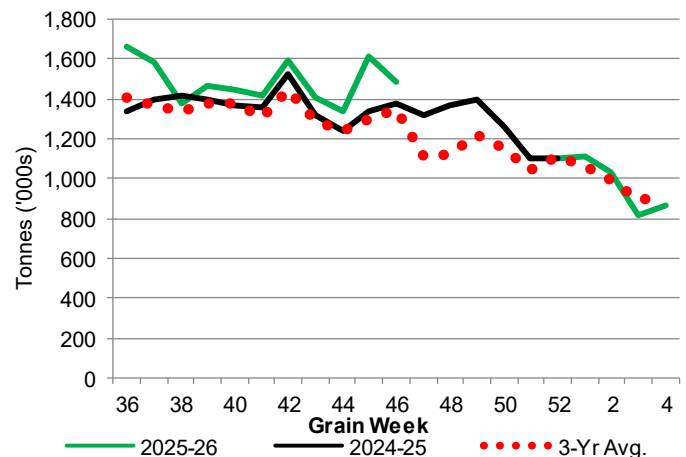
1-B1 Terminal Stocks ('000 tonnes) – Week 46

	VC	PR	West Coast	CH	TB	Total
2025-26	811.7	147.4	959.1	0.7	520.9	1,480.7
2024-25	750.1	124.7	874.8	0.7	505.4	1,380.9
3-Yr Avg.	723.4	131.0	854.4	0.7	488.2	1,343.4
Var % - LY	8%	18%	10%	0%	3%	7%
Var % 3-Yr Avg.	12%	13%	12%	0%	7%	10%
Storage Capacity	1,275.5	209.5	1,485.0	140.0	1,127.5	2,752.5
Estimated Working Capacity	892.9	146.7	1,039.6	98.0	789.2	1,926.8
25-26 % of Wkg Cap	91%	100%	92%	1%	66%	77%

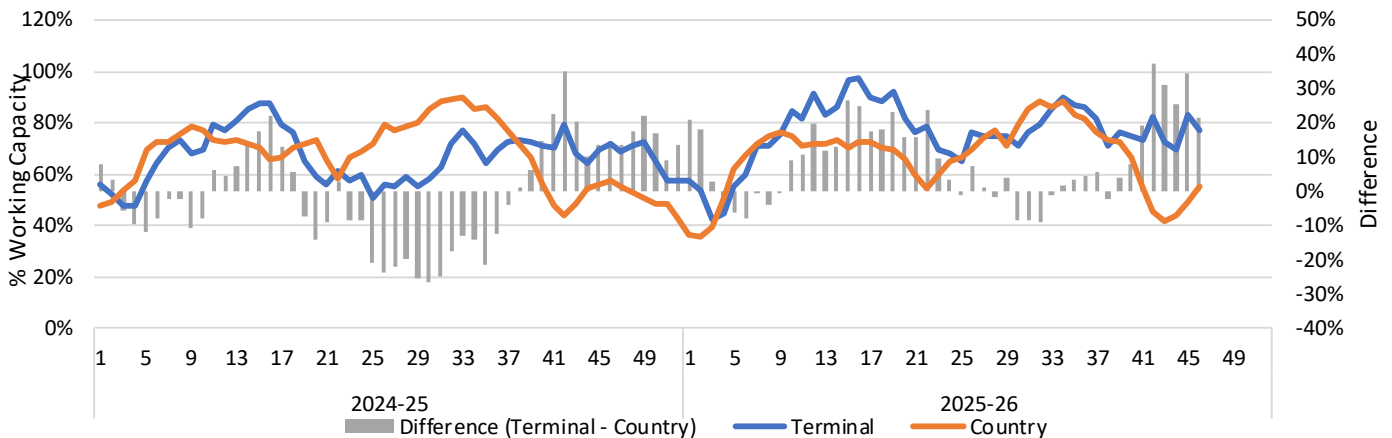
1-A2 Weekly Country Stocks in Store



1-B2 Weekly Terminal Stocks in Store



1-C Weekly Stock Balance

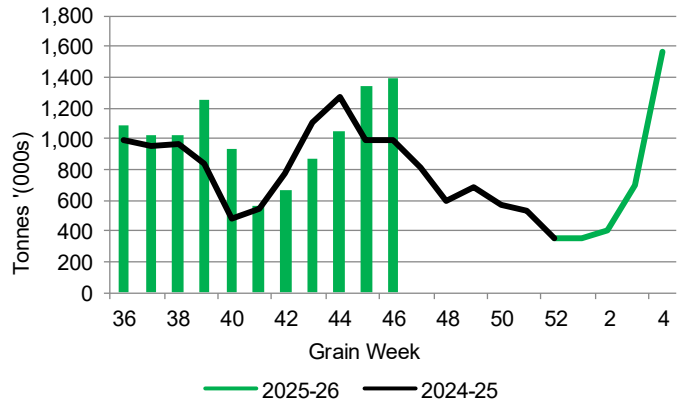


## 2. Country Deliveries

2-A Country Deliveries ('000 tonnes) – Week 46

	MB	SK	AB	BC	Total
2025-26	248.1	734.9	401.5	5.6	1,390.1
2024-25	220.8	512.4	254.8	2.9	990.9
4 Wk Avg	210.6	554.9	389.5	5.5	1,160.5
Var % to Last Year	12%	43%	58%	93%	40%
Var % To 4 Wk Avg	18%	32%	3%	2%	20%

2-B 2025-26 Weekly Country Deliveries



## 3. Port Performance

3-A Weekly Unloads by Port (Cars) – This Year for Week 46, 4-Week Moving Average and Variances

	Vancouver	Prince Rupert	West Coast	Thunder Bay	Churchill	Total
2025-26	6,170	580	6,750	2,014	-	8,764
2024-25	4,671	670	5,341	2,445	n/a	7,786
4-Wk Avg.	5,826	886	6,712	1,702	-	8,414
Var % to Last Year	32%	-13%	26%	-18%	n/a	13%
Var % to 4-Wk Avg.	6%	-35%	1%	18%	n/a	4%

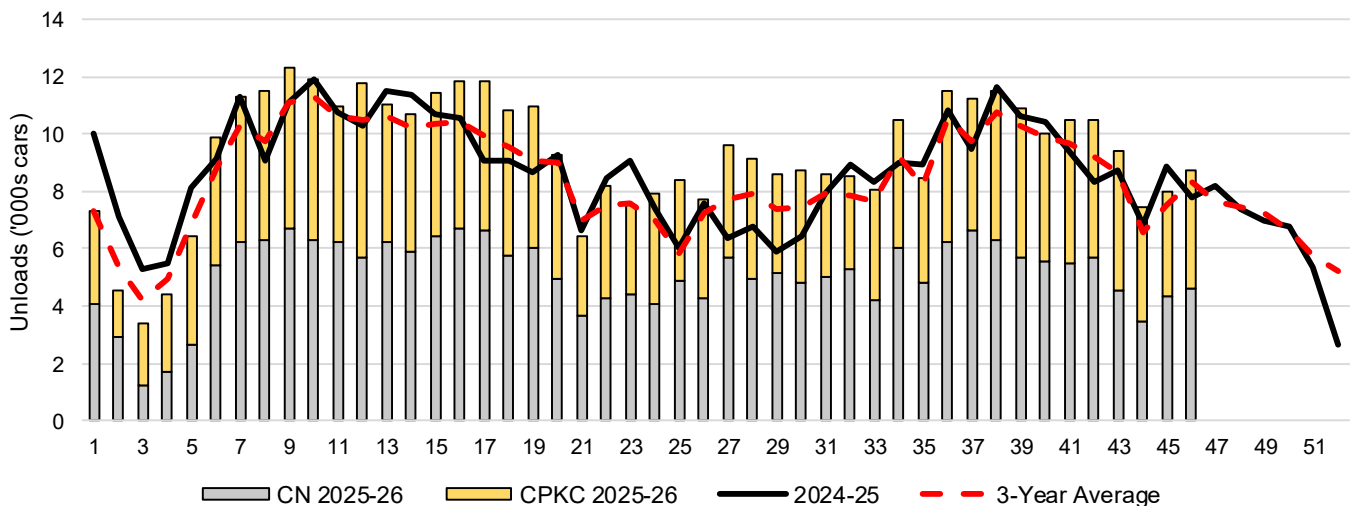
3-B Terminal Unloads by Port – This Year-to-Date as at Week 46 and Variances

YTD Unloads (cars)	Vancouver	Prince Rupert	West Coast	Thunder Bay	Churchill	Total
2025-26	305,760	49,505	355,265	74,787	-	430,052
2024-25	284,917	47,439	332,356	74,433	-	406,789
3-Yr Avg	280,048	42,819	322,867	72,155	-	395,022
Var % to Last Year	7%	4%	7%	0%	n/a	6%
Var % to 3-Yr Avg	9%	16%	10%	4%	n/a	9%

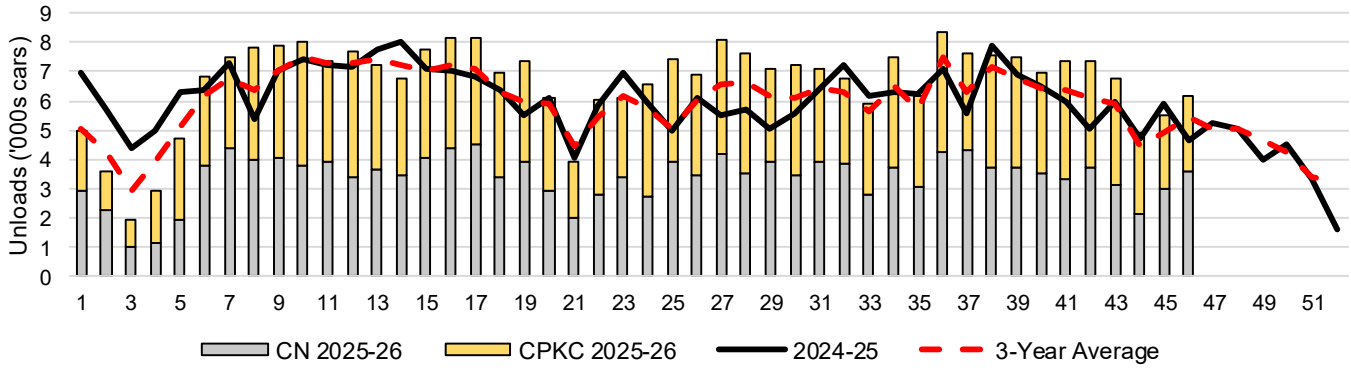
  

YTD Unloads ('000 tonnes)	Vancouver	Prince Rupert	West Coast	Thunder Bay	Churchill	Total
2025-26	29,416.1	4,801.8	34,217.9	7,252.2	-	41,470.1
2024-25	27,218.2	4,578.1	31,796.3	7,231.4	-	39,027.7
3-Yr Avg.	26,872.1	4,142.8	31,014.9	7,007.7	-	38,022.7
Var % to Last Year	8%	5%	8%	0%	n/a	6%
Var % to 3-Yr Avg.	9%	16%	10%	3%	n/a	9%

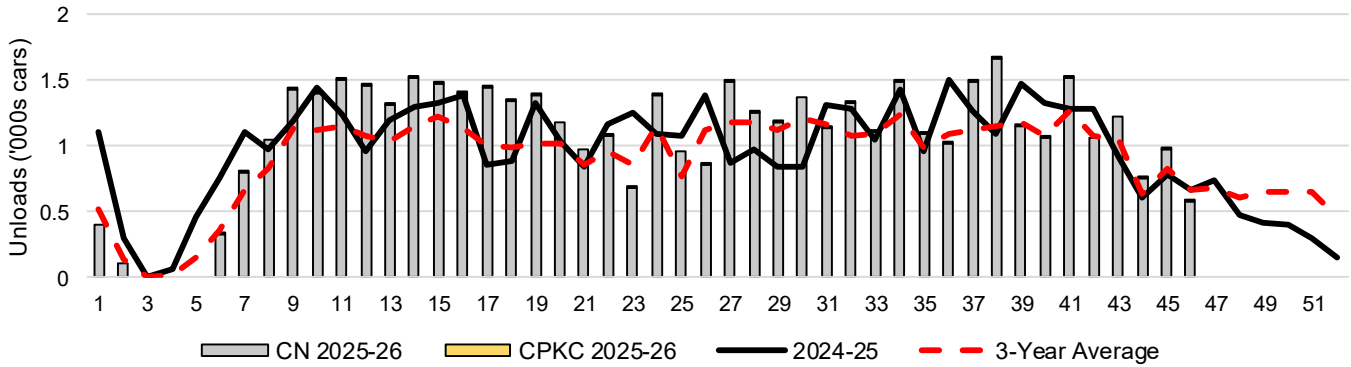
3-C Western Port Terminal Unloads (cars), Total by Carrier, This Year vs. Last Year and the 3-Year Average



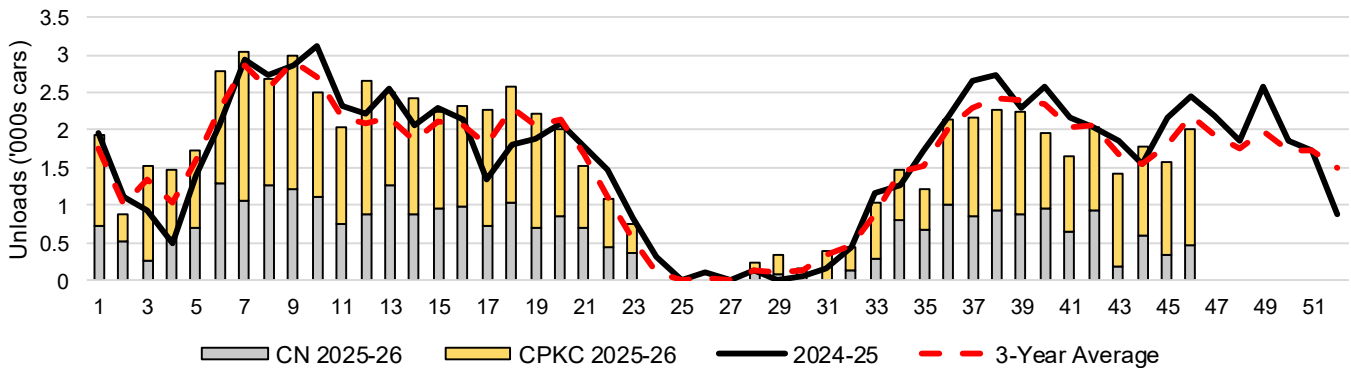
### 3-D Vancouver Terminal Unloads (cars), Total by Carrier, This Year vs. Last Year and the 3-Year Average



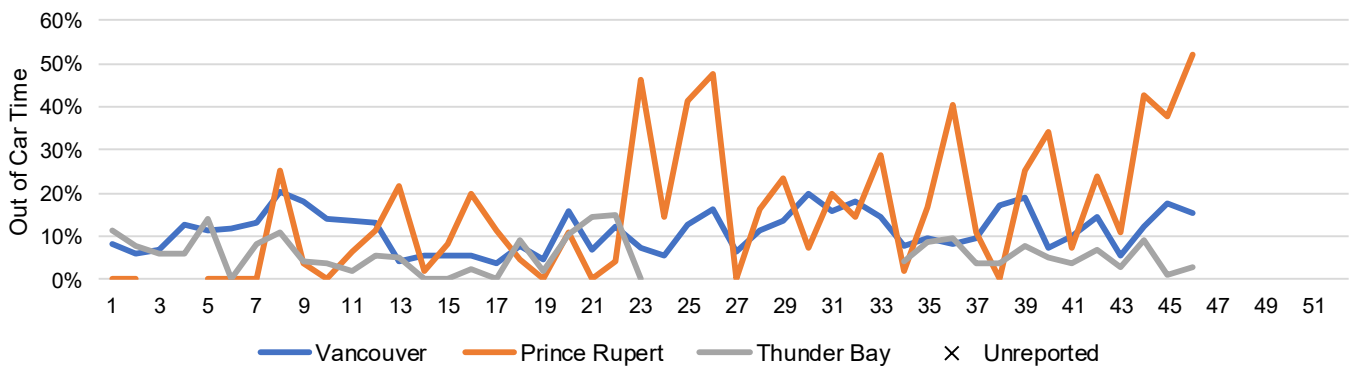
### 3-E Prince Rupert Terminal Unloads (cars), Total by Carrier, This Year vs. Last Year and the 3-Year Average



### 3-F Thunder Bay Terminal Unloads (cars), Total by Carrier, This Year vs. Last Year and the 3-Year Average



### 3-G Weekly Out-of-Car Time (% of hours out-of-cars / total hours working)



Out-of-car time is measured weekly and uses data from terminal elevators on the total number of hours the facilities are open & staffed (including overtime hours) and the corresponding number of hours that terminals have no railcars available to unload. The measure is expressed as a percentage (hours without cars to the total number of hours working).

### 3-H Monthly Unloads (cars) – This Year vs. Last Year and the 3-Year Average to Week 43 2025-26

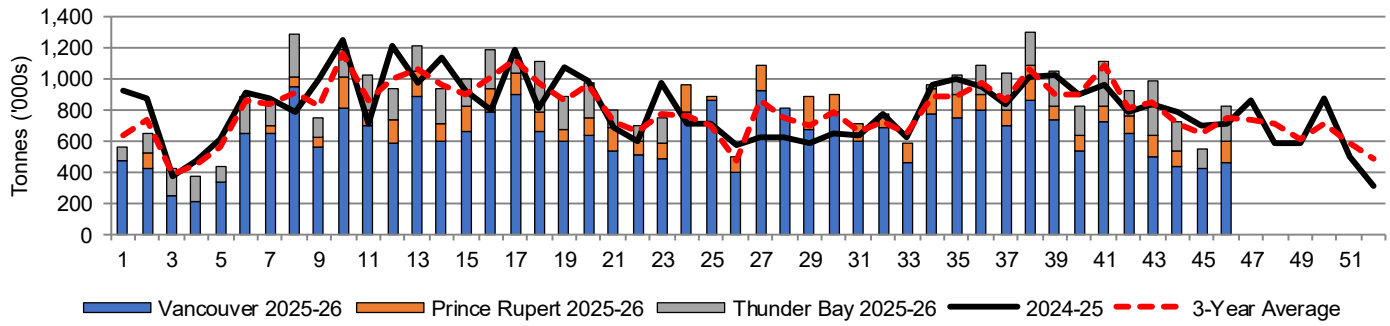
Months	Aug	Sep	Oct	Nov	Dec	Jan	Feb	Mar	Apr	May	Jun	Jul
Weeks	1-4	5-8	9-13	14-17	18-22	23-26	27-30	31-34	35-39	40-43	44-47	48-52
2025-26	19,698	39,195	57,998	45,883	45,725	31,587	36,099	35,650	53,592	40,361	-	-
2024-25	27,951	37,723	55,616	41,691	42,065	30,063	25,510	34,219	51,573	36,877	31,705	29,163
3-Yr Avg.	21,886	35,667	54,166	41,012	42,121	27,631	30,543	32,597	49,584	37,386	26,591	32,929
Var % to Last Year	-30%	4%	4%	10%	9%	5%	42%	4%	4%	9%		
Var % to 3-Yr Avg.	-10%	10%	7%	12%	9%	14%	18%	9%	8%	8%		

## 4. Shipments

### 4-A Shipments from Port Terminals ('000 tonnes) – This Year-to-Date as at Week 46 and Variance to Last Year-to-Date

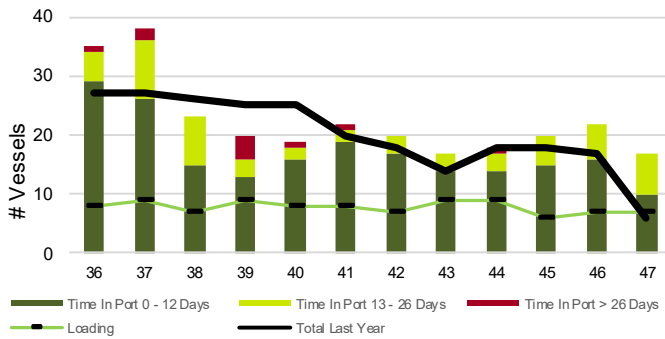
	Vancouver	Prince Rupert	West Coast	Thunder Bay	Churchill	Total
2025-26	29,140.0	4,773.6	33,913.6	6,613.3	-	40,526.9
2024-25	27,159.3	4,568.5	31,727.8	6,298.7	-	38,026.5
3-Yr Avg.	27,077.3	4,112.6	31,190.0	6,354.8	-	37,544.7
Var % to Last Year		7%	4%	7%	n/a	7%
Var % to 3-Yr Avg.		8%	16%	9%	n/a	8%

### 4-B Weekly Shipments ('000 tonnes) from Port Terminals – This Year vs Last Year and the 3-Year Average

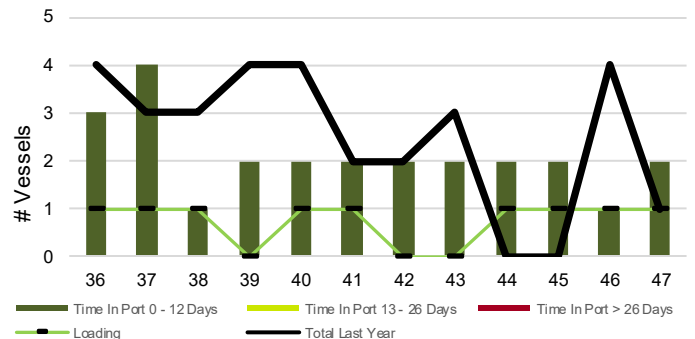


## 5. Vessels

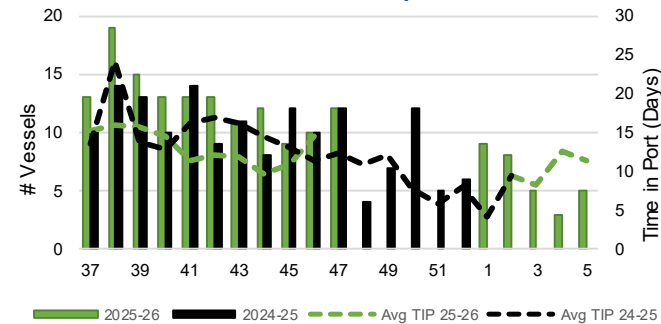
### 5-A Vessel Lineup at Vancouver as of Week 47 2025-26



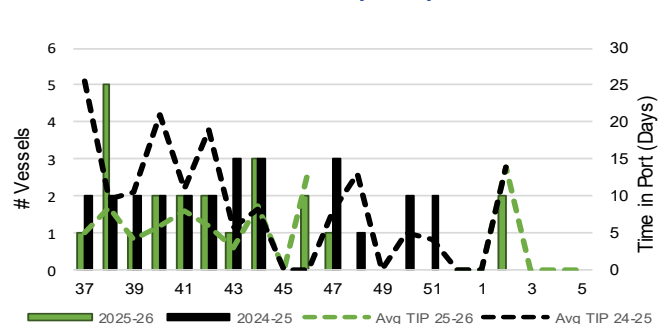
### 5-C Vessel Lineup at Prince Rupert as of Week 47 2025-26



### 5-B Vessels Cleared at Vancouver up to Week 47 2025-26



### 5-D Vessels Cleared at Prince Rupert up to Week 47 2025-26



Note: The 'Time in Port' measure for 5-A and 5-C is calculated as how long each vessel in the lineup has been in port as at Sunday 23:59 of that grain week. The 'Avg Time in Port (TIP)' measure for 5-B and 5-D is the average number of days that all vessels which cleared that week were in port. These measures use vessel data provided by the BC Chamber of Shipping and Pacific Pilotage Authority.