

Grain Monitoring Program

Weekly Performance Update

July 07, 2026

For Grain Week 47 2025-26 CY
June 22, 2026 to June 28, 2026

Summary

	Week 47	Week 46	Var. from Last Year
1. Stocks in Store ('000 tonnes)			
Country Elevators	↓ 2,839.6	2,950.4	-3%
% of Working Capacity	53%	55%	
Terminal Elevators	↓ 1,453.0	1,480.7	10%
% of Working Capacity	75%	77%	

2. Country Deliveries ('000 tonnes)			
Country Deliveries	↓ 1,114.6	1,390.1	37%

3. Port Performance (Cars)			
Vancouver Unloads	↑ 6,312	6,170	20%
Prince Rupert Unloads	↑ 1,222	580	64%
Churchill Unloads	— 0	0	n/a
Thunder Bay Unloads	↓ 1,556	2,014	-29%
Total Weekly Unloads	↑ 9,090	8,764	11%
4-Week Rolling Average	↓ 8,339	8,414	5%
Var. to 4-Week Rolling Average	9%	4%	
YTD Unloads	439,142	430,052	6%
Weekly Out-of-Car Time	↓ 2.1%	14.5%	-84.4%

4. Terminal Shipments Year-to-Date ('000 tonnes)			
Vancouver	↑ 29,799.0	29,140.0	8%
Prince Rupert	↑ 4,852.8	4,773.6	3%
Churchill	— 0.0	0.0	n/a
Thunder Bay	↑ 6,817.1	6,613.3	5%
Total Western Canada	↑ 41,468.9	40,526.9	7%

5. Vessels as at Jul 5, 2026		Week 48	Week 47	Var. from Last Year
Vancouver	Vessel Lineup in port	↓ 15	17	36%
	Vessels Cleared	↓ 11	12	175%
	Vessels Arrived	↑ 9	7	0%
Pr. Rupert	Vessel Lineup in port	— 2	2	n/a
	Vessels Cleared	↑ 2	1	100%
	Vessels Arrived	— 2	2	n/a

Vessels Inbound Jul 06, 2026 to Jul 12, 2026 (Week 49)	
Vancouver	19
Prince Rupert	3

1. Stocks in Store: (Page 2)

- Country stocks decreased to 2.84 MMT in Week 47 utilizing 53% of the system's working capacity. Space in primary elevators is good.
- Total western port terminal stocks decreased to 1.45 MMT in Week 47, utilizing 75% of the working capacity. Space at Vancouver is limited.

2. Country Deliveries: (Page 3)

- Deliveries to primary elevators were 1.11 MMT in Week 47.

3. Port Performance: (Pages 3-5)

- Total western port unloads were 9% higher than the 4-week moving average and 11% higher than Week 47 last year.
- West Coast unloads were 7,534 cars (Vancouver 6,312 and Prince Rupert 1,222), 14% higher than the 4-week moving average and 25% higher than Week 47 last year.
- Thunder Bay had 1,556 unloads, 10% lower than the 4-week moving average and 29% lower than Week 47 last year.
- The total average terminal out-of-car time (OCT) decreased to 2.1% from 14.5% the previous week. The OCT for Week 47 was 3.2% at Vancouver, 0% at Prince Rupert, and 0% at Thunder Bay.

4. Shipments: (Page 5)

- Year-to-date Western Canadian shipments from port terminal elevators at Week 47 were 7% higher than the same period last year and 8% higher than the 3-year average.

5. Vessels: (Page 5)

- Vancouver vessel lineup for Week 48 2025-26 decreased to 15 vessels (The current one-year average at Vancouver is 21 vessels). Of the 15, 9 were at berth, 5 were anchored at English Bay, 1 was anchored at Burrard Inlet, and 0 were anchored at Vancouver Island.
- Prince Rupert vessel lineup for Week 48 2025-26 remained at 2 vessels (The current one-year average at Prince Rupert is 2 vessels).
- Vessels cleared from Vancouver was 11 and from Prince Rupert was 2 in Week 48 2025-26.

1. Stocks in Store

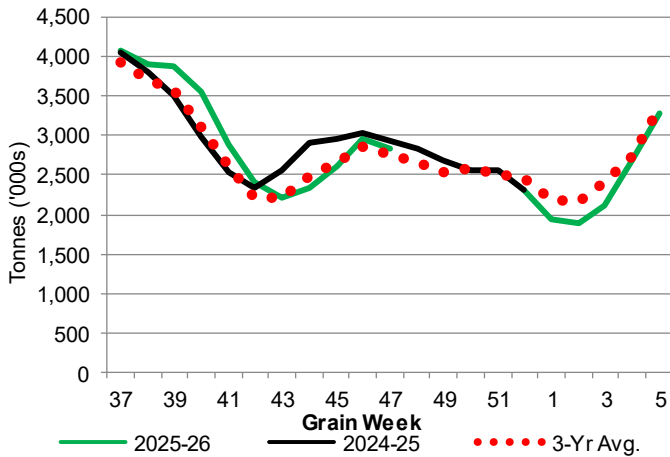
1-A1 Country Stocks ('000 tonnes) – Week 47

	MB	SK	AB	BC	Total
2025-26	615.2	1,326.5	889.3	8.6	2,839.6
2024-25	636.4	1,502.3	779.2	13.8	2,931.7
3-Yr Avg.	574.2	1,366.4	812.4	10.3	2,763.3
Var % - LY	-3%	-12%	14%	-38%	-3%
Var % 3-Yr Avg.	7%	-3%	9%	-17%	3%
Storage Capacity	1,630.5	4,021.6	2,498.3	30.6	8,181.0
Estimated Working Capacity	1,059.8	2,614.0	1,623.9	19.9	5,317.6
25-26 % of Wkg Cap	58%	51%	55%	43%	53%

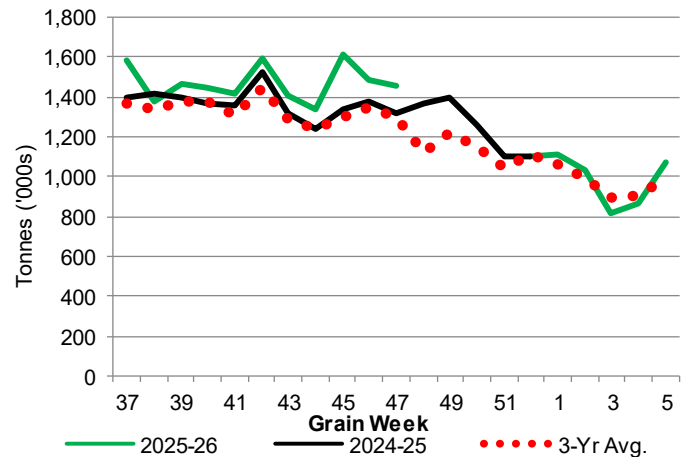
1-B1 Terminal Stocks ('000 tonnes) – Week 47

	VC	PR	West Coast	CH	TB	Total
2025-26	794.9	111.3	906.2	0.7	546.1	1,453.0
2024-25	677.6	115.6	793.2	0.7	528.1	1,322.0
3-Yr Avg.	658.5	130.5	789.0	0.7	506.3	1,296.0
Var % - LY	17%	-4%	14%	0%	3%	10%
Var % 3-Yr Avg.	21%	-15%	15%	0%	8%	12%
Storage Capacity	1,275.5	209.5	1,485.0	140.0	1,127.5	2,752.5
Estimated Working Capacity	892.9	146.7	1,039.6	98.0	789.2	1,926.8
25-26 % of Wkg Cap	89%	76%	87%	1%	69%	75%

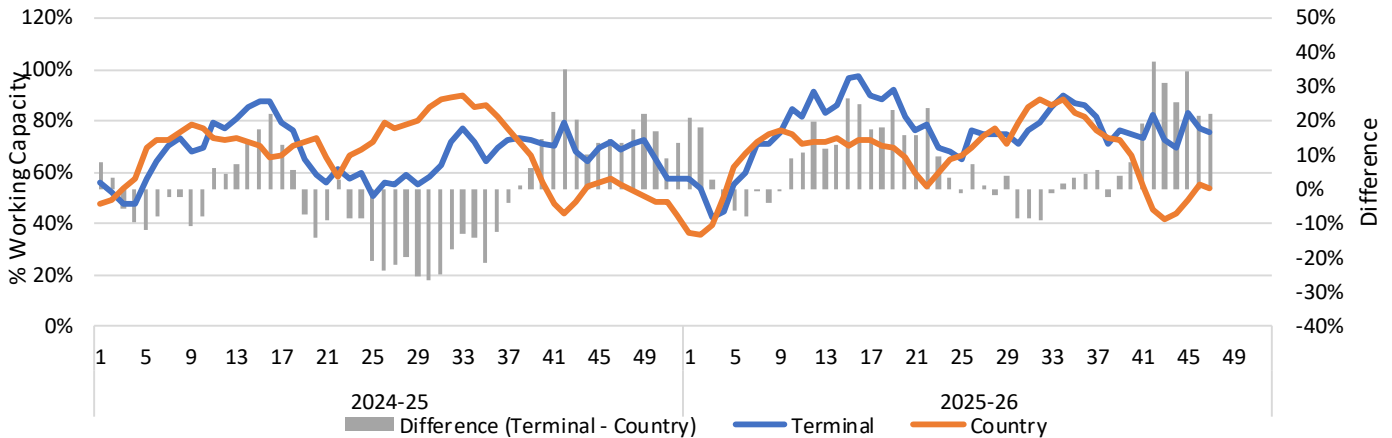
1-A2 Weekly Country Stocks in Store



1-B2 Weekly Terminal Stocks in Store



1-C Weekly Stock Balance

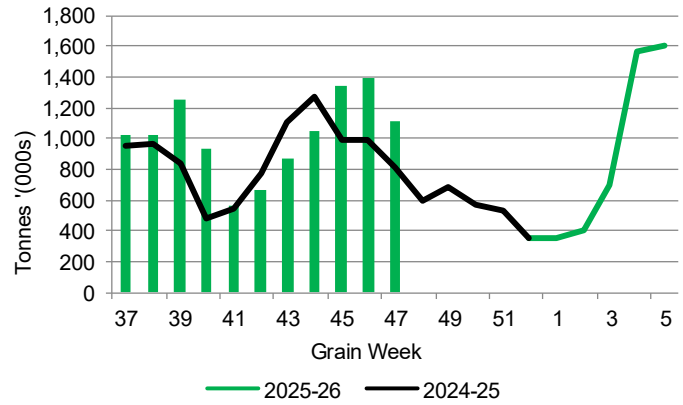


2. Country Deliveries

2-A Country Deliveries ('000 tonnes) – Week 47

	MB	SK	AB	BC	Total
2025-26	199.8	575.8	334.2	4.8	1,114.6
2024-25	203.1	370.2	232.9	5.0	811.2
4 Wk Avg	223.1	618.5	376.3	5.3	1,223.2
Var % to Last Year	-2%	56%	44%	-4%	37%
Var % To 4 Wk Avg	-10%	-7%	-11%	-9%	-9%

2-B 2025-26 Weekly Country Deliveries



3. Port Performance

3-A Weekly Unloads by Port (Cars) – This Year for Week 47, 4-Week Moving Average and Variances

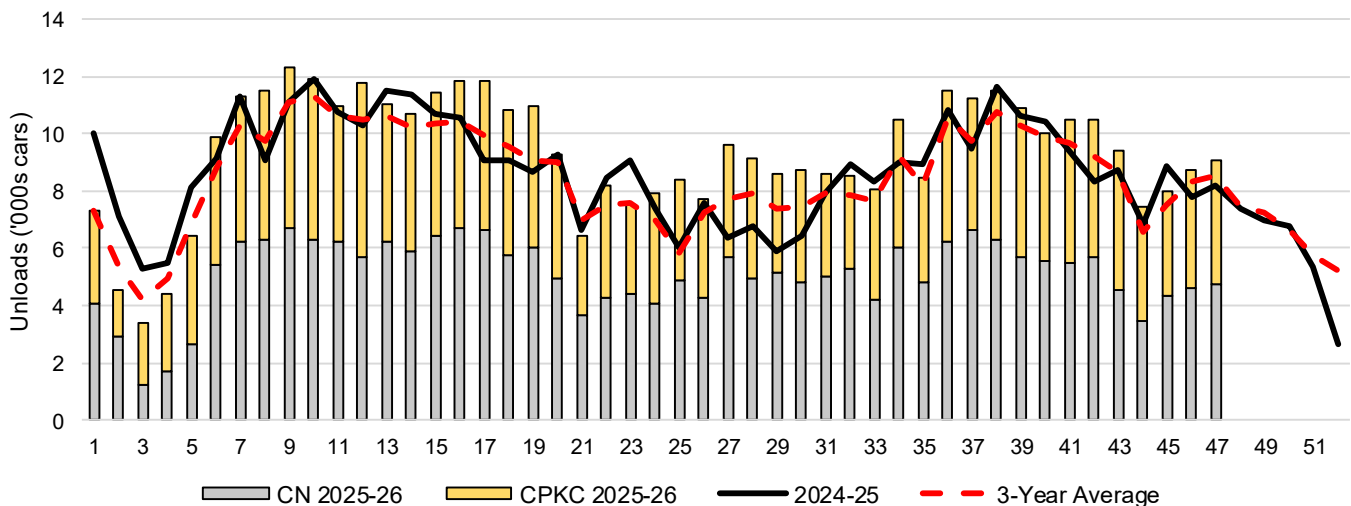
	Vancouver	Prince Rupert	West Coast	Thunder Bay	Churchill	Total
2025-26	6,312	1,222	7,534	1,556	-	9,090
2024-25	5,264	744	6,008	2,196	n/a	8,204
4-Wk Avg.	5,720	884	6,604	1,735	-	8,339
Var % to Last Year	20%	64%	25%	-29%	n/a	11%
Var % to 4-Wk Avg.	10%	38%	14%	-10%	n/a	9%

3-B Terminal Unloads by Port – This Year-to-Date as at Week 47 and Variances

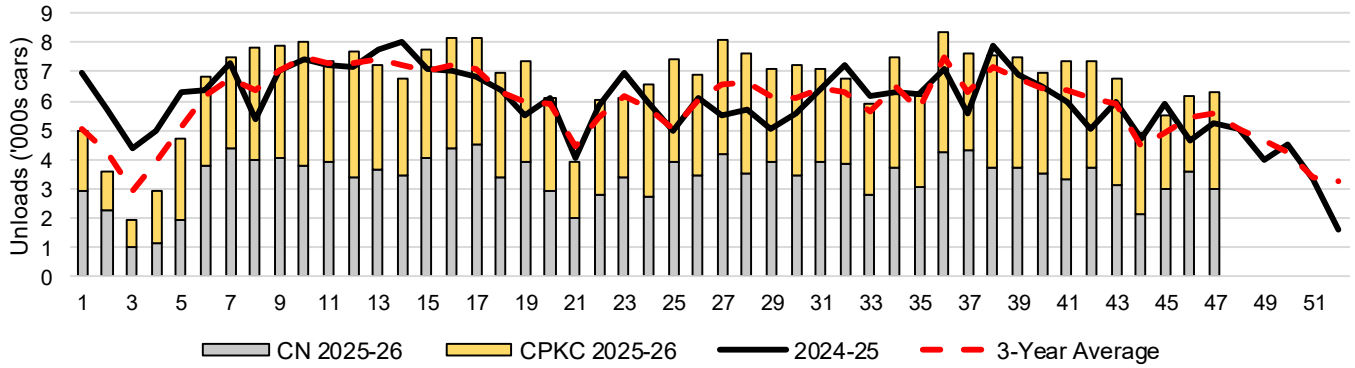
YTD Unloads (cars)	Vancouver	Prince Rupert	West Coast	Thunder Bay	Churchill	Total
2025-26	312,072	50,727	362,799	76,343	-	439,142
2024-25	290,181	48,183	338,364	76,629	-	414,993
3-Yr Avg	285,625	43,784	329,409	74,136	-	403,545
Var % to Last Year	8%	5%	7%	0%	n/a	6%
Var % to 3-Yr Avg	9%	16%	10%	3%	n/a	9%

YTD Unloads ('000 tonnes)	Vancouver	Prince Rupert	West Coast	Thunder Bay	Churchill	Total
2025-26	30,023.0	4,918.2	34,941.2	7,403.5	-	42,344.7
2024-25	27,728.0	4,647.6	32,375.6	7,441.2	-	39,816.8
3-Yr Avg.	27,407.0	4,233.9	31,640.9	7,200.4	-	38,841.3
Var % to Last Year	8%	6%	8%	-1%	n/a	6%
Var % to 3-Yr Avg.	10%	16%	10%	3%	n/a	9%

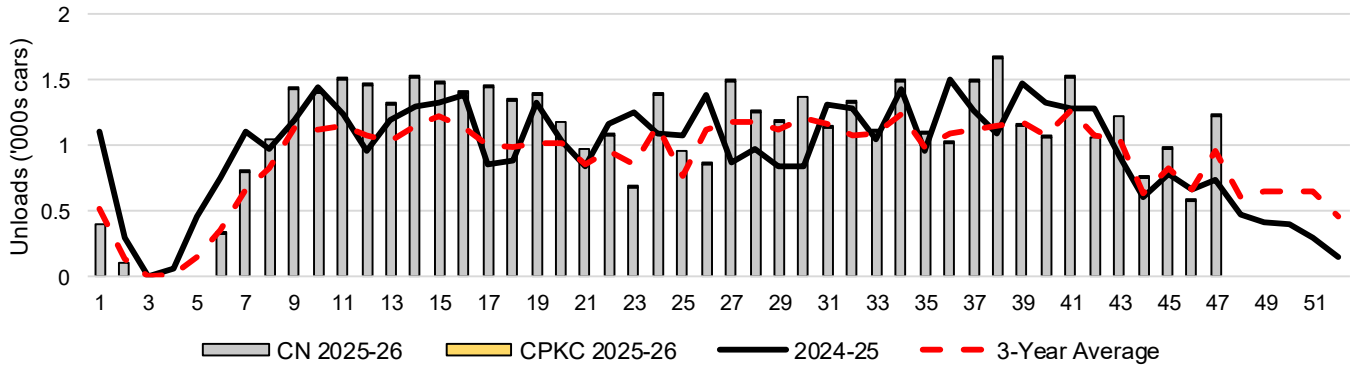
3-C Western Port Terminal Unloads (cars), Total by Carrier, This Year vs. Last Year and the 3-Year Average



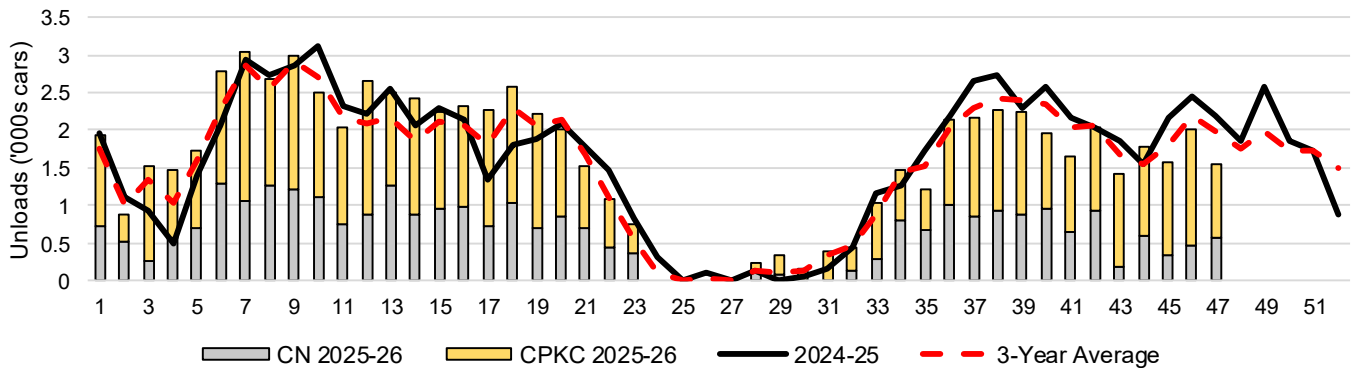
3-D Vancouver Terminal Unloads (cars), Total by Carrier, This Year vs. Last Year and the 3-Year Average



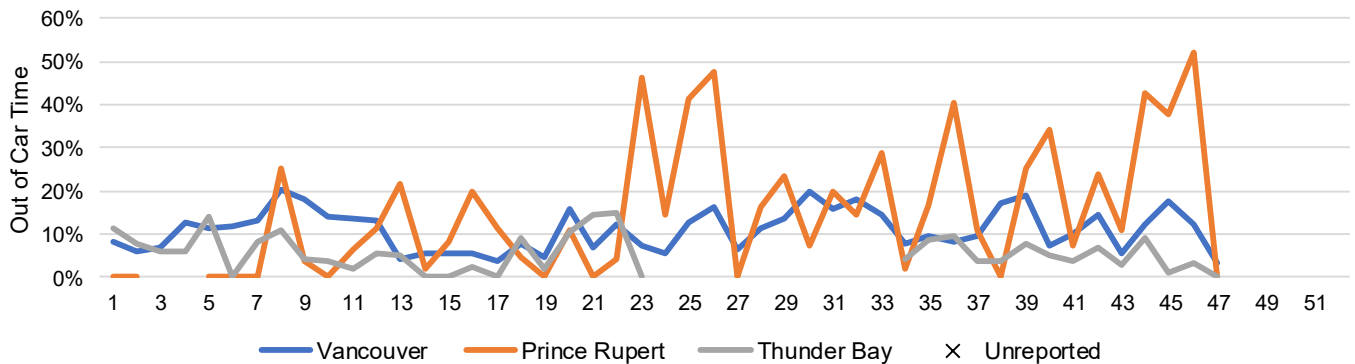
3-E Prince Rupert Terminal Unloads (cars), Total by Carrier, This Year vs. Last Year and the 3-Year Average



3-F Thunder Bay Terminal Unloads (cars), Total by Carrier, This Year vs. Last Year and the 3-Year Average



3-G Weekly Out-of-Car Time (% of hours out-of-cars / total hours working)



Out-of-car time is measured weekly and uses data from terminal elevators on the total number of hours the facilities are open & staffed (including overtime hours) and the corresponding number of hours that terminals have no railcars available to unload. The measure is expressed as a percentage (hours without cars to the total number of hours working).

3-H Monthly Unloads (cars) – This Year vs. Last Year and the 3-Year Average to Week 47 2025-26

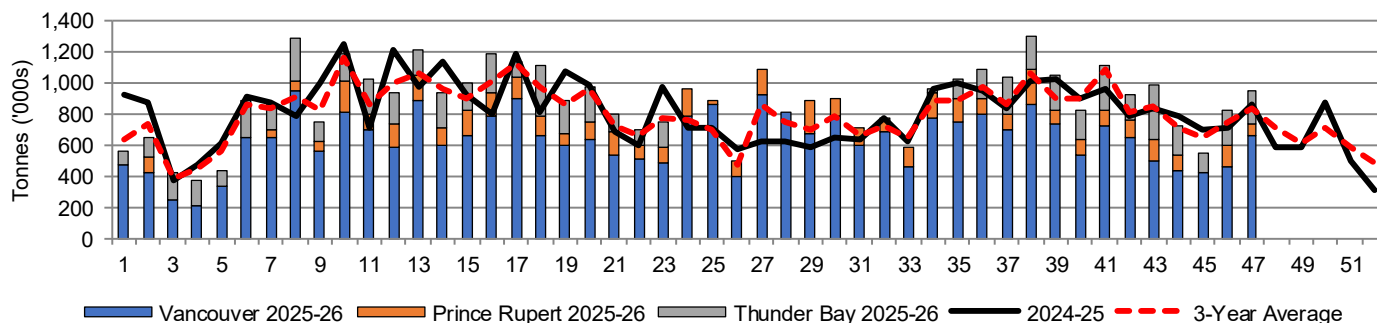
Months	Aug	Sep	Oct	Nov	Dec	Jan	Feb	Mar	Apr	May	Jun	Jul
Weeks	1-4	5-8	9-13	14-17	18-22	23-26	27-30	31-34	35-39	40-43	44-47	48-52
2025-26	19,698	39,195	57,998	45,883	45,725	31,587	36,099	35,650	53,592	40,361	33,354	-
2024-25	27,951	37,723	55,616	41,691	42,065	30,063	25,510	34,219	51,573	36,877	31,705	29,163
3-Yr Avg.	21,886	35,667	54,166	41,012	42,121	27,631	30,543	32,597	49,584	37,386	30,950	32,929
Var % to Last Year	-30%	4%	4%	10%	9%	5%	42%	4%	4%	9%	5%	
Var % to 3-Yr Avg.	-10%	10%	7%	12%	9%	14%	18%	9%	8%	8%	8%	

4. Shipments

4-A Shipments from Port Terminals ('000 tonnes) – This Year-to-Date as at Week 47 and Variance to Last Year-to-Date

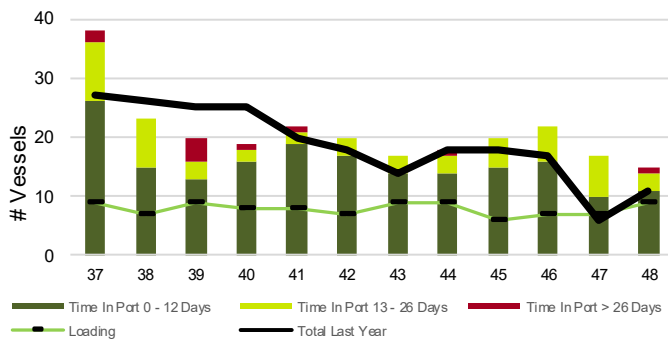
	Vancouver	Prince Rupert	West Coast	Thunder Bay	Churchill	Total	
2025-26	29,799.0	4,852.8	34,651.8	6,817.1	-	41,468.9	
2024-25	27,705.3	4,695.4	32,400.7	6,480.0	-	38,880.7	
3-Yr Avg.	27,666.1	4,208.8	31,874.9	6,509.3	-	38,384.1	
Var % to Last Year		8%	3%	7%	5%	n/a	7%
Var % to 3-Yr Avg.		8%	15%	9%	5%	n/a	8%

4-B Weekly Shipments ('000 tonnes) from Port Terminals – This Year vs Last Year and the 3-Year Average

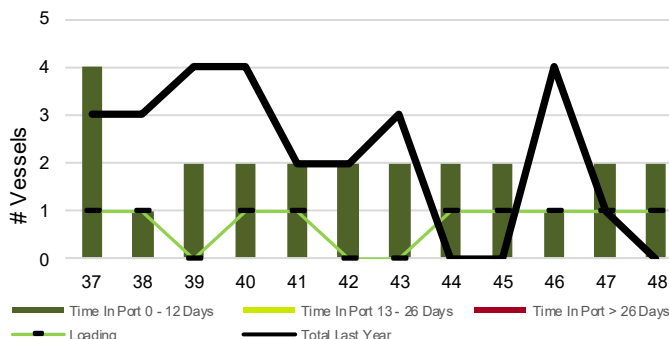


5. Vessels

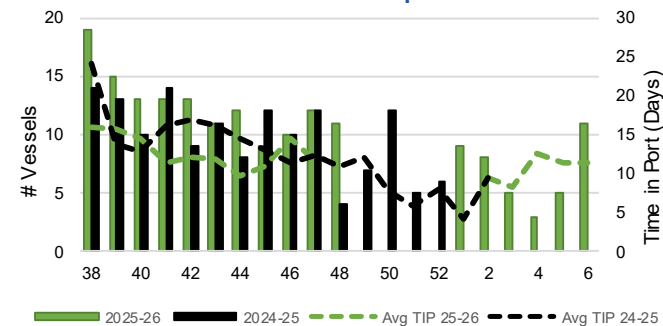
5-A Vessel Lineup at Vancouver as of Week 48 2025-26



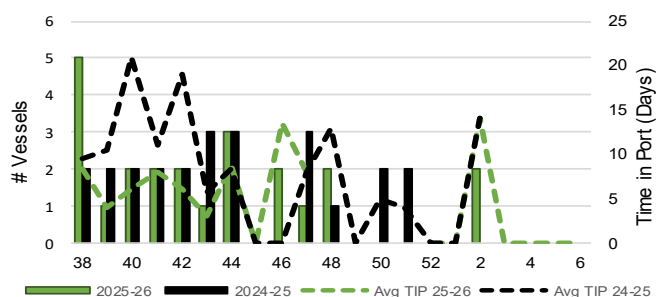
5-C Vessel Lineup at Prince Rupert as of Week 48 2025-26



5-B Vessels Cleared at Vancouver up to Week 48 2025-26



5-D Vessels Cleared at Prince Rupert up to Week 48 2025-26



Note: The 'Time in Port' measure for 5-A and 5-C is calculated as how long each vessel in the lineup has been in port as at Sunday 23:59 of that grain week. The 'Avg Time in Port (TIP)' measure for 5-B and 5-D is the average number of days that all vessels which cleared that week were in port. These measures use vessel data provided by the BC Chamber of Shipping and Pacific Pilotage Authority.